

JIKO – “Wisdom – Light”

DECEMBER 2023

VOLUME 69, ISSUE 12

Monthly Newsletter of
The Aiea Hongwanji Mission

Building Healthy Sanghas: Sharing Joy Together



MINISTER’S MESSAGE

Two Kinds of (Incomplete) Shinjin

By Rev. Eric Matsumoto

There are two kinds of shinjin: one arises from hearing, and the other arises from thinking.

The person whose shinjin arises from (only) hearing and not from thinking (reflection) is called “incomplete shinjin.” There are another two kinds of shinjin: one is to believe that there is enlightenment, and the other is to believe that there are people who actually attain it.

A person whose shinjin believes that (only) enlightenment exists, but does not believe that people actually attain it is also called “incomplete shinjin.”



The Shinjin that we speak of in Shin Buddhism differs from the ordinary definition of faith or having faith. For this reason, many translations do not translate the word shinjin into English as faith and instead encourage us to know the deep meaning of it separately without trying to substitute a one-word English equivalent for it. I tend to use “The Awakened Mind of True Entrusting.” Shinran in the above quote is emphasizing that the shinjin of Jodo Shinshu is one that blossoms/arises because of deep reflection, hence the word “thinking.” It is not blind faith or merely based on taking someone’s word for it. Jodo Shinshu faith is based on experiencing the Wisdom and Compassion of Amida Buddha. It is not merely taking Shinran’s or my word for it, but from directly experiencing the truth of the Nembutsu Dharma. It is a profound realization that when experienced transforms one’s life. Shinran is encouraging us to deeply reflect on the message of the Pure Land Sutras and Amida Buddha’s great insight (Wisdom) and foresight (Compassion). In one of his hymns Shinran writes “*Through the compassion of Sakyamuni and Amida, We have been brought to realize the mind that seeks to attain Buddhahood. It is by entering the wisdom of shinjin that we become persons who respond in gratitude to the Buddhas’ benevolence.*” In another poem, he says “*It is by the Power of Dharmakara’s Vow that we realize the nembutsu that is wisdom; Were it not for the wisdom of shinjin, how could we attain nirvana?*” It is interesting that in these two poems/hymns, we find a word that normally is not associated with faith, the word “wisdom.” This tells me the characteristic of “Shinjin” in Jodo Shinshu. It is not just an emotion, or just a feeling, or just a belief. Being illuminated by Amida Buddha’s Light of Wisdom and Compassion, a deep understanding, a realization has come about due to honest and deep reflection and the result is our Faith in Amida Buddha or Shinjin or The Awakened Mind of True Entrusting.

FOR ASSISTANCE OF THE MINISTER

Please call:

Reverend

Eric Matsumoto

808-487-2626 (AHM
office)

If he is not
available, leave a
message on the
answering
machine.

For religious
Emergencies
(Makuragyo or bedside
services), please call
Rev. Matsumoto on his
mobile phone:
808-488-5685

**Aiea Hongwanji
Mission,**
99-186 Puakala St,
Aiea, Hawaii 96701
Phone: 808-487-2626

Email:

aieajiko@gmail.com

Website:

aieabuddhisttemple.org

A very easy way to understand one aspect of Shinjin in Jodo Shinshu is to reflect on the explanation of the "Two Kinds of Deep Mind" by Shantao of China when he says *"One truly knows oneself to be a foolish being full of blind passions, with scant roots of good, transmigrating in the three realms and unable to emerge from this burning house (of samsara). And further, one truly knows now, without so much as a single thought of doubt, that Amida's universal Primal Vow decisively enables all to attain birth (in the Pure Land of Enlightenment) including those who say the Name even down to ten times, or even but hear it."*

Amida Buddha's Light of Wisdom and Compassion illuminating my mind enables me to look at/reflect upon myself. It is not easy to truly know myself especially when it comes to the negative aspects of oneself. But because the Light of Wisdom and Compassion illumines me, I reflect on my person and begin to ask myself, "Am I always grateful for everything?" "Am I always satisfied with what I have?" "Am I really thinking of others?" Honestly speaking, more often than not the answer is "no." I still have my wants and desire which at times like a huge wave overpowers me and pushes me down and in the process I also push others down. This is a bonbu or foolish being. This is an inner realization. In this respect, there shouldn't be a feeling of resentment in being referred to as foolish being. The Sutras and Great Teachers share with us an insight into our self-centered tendency, but the realization is our own personal experience and conclusion about oneself. As a note, "evil" in Buddhism does include morally wrong actions and deeds, but more than that the primary definition of evil in Buddhism is that which causes suffering for self and others. Buddhism has a very different meaning of evil. Anyway, about being evil or becoming aware that one is a foolish being or as I like to phrase it, an individual still plagued by negative thoughts, emotions and actions, it is a conclusion about oneself which I have been enabled to clearly see or realize due to the Light of Wisdom and Compassion illuminating my person. As for the truth of Amida Buddha's compassion, it too is an experience. Let us continue to reflect, Shinran says of Dharmakara/Amida *"The Buddha's intention is difficult to fathom. Nevertheless, reflecting...for myself alone, I find that all beings...have since the beginningless past down to this day, this very moment...completely lack the mind of purity. ... Thus, when the Tathagata, in profound compassion for...all sentient beings in pain and affliction, performed bodhisattva practices for inconceivable millions of measureless kalpas, there was not a moment, not an instant, when his practice...was not pure, or lacked a true mind. With this pure, true mind, the Tathagata brought to fulfillment the perfect, unhindered, inconceivable, indescribable and inexplicable supreme virtues. The Tathagata gives this sincere mind to all living things."* This "sincere mind" given by Amida Buddha to sentient beings is the Shinjin that we speak of in Jodo Shinshu. It is not my limited, one-sided faith originating with me and directed to the Buddha, but a faith that has come full circle, originating with the Buddha, blossomed within me and leads back to the Buddha and the Pure Land. It is a dynamic two-way interaction in which the two are inseparable.

The second part of today's quote clarifies the difference between believing that there is (a path to) enlightenment and believing that it actually happens or can happen. One is purely objective and has nothing to do with oneself while the other is very personal and has everything to do with oneself. Much perhaps like learning history. Many people's perception of learning is history is learning dates, names and events, but that's not the most important, more important are the lessons we can learn from studying history. It's the application of history that makes it fascinating, alive and meaningful. Likewise, our quest should not stop at knowing that there is (a path to) enlightenment, but in understanding that in actuality there have, are and will be people who actually attain enlightenment via this Path and that person is I (thanks to Bodhisattva Dharmakara/Amida Buddha who opened the Path of Nembutsu to Enlightenment).

In the final analysis, the conclusion that each one of us should come to, while not excluding anyone else, is "This Vow was made for my sake alone, Namandabutsu." As a closing reflection, I quote the Tanisho. *"When I ponder on the compassionate vow of Amida Buddha brought forth after five kalpas of profound thought, I realize it was for my sake, alone. How I am filled with gratitude for the Primal Vow, in which Amida resolved to save me, a person so heavily burdened with (negative) karma."*

Namo Amida Butsu/Entrusting in All-Inclusive Wisdom and All-Embracing Compassion.

Honpa Hongwanji Mission of Hawaii - HEADQUARTERS UPDATE

1727 Pali Highway, Honolulu, Hawaii 96813 ** Phone: (808) 522-9200 Fax: (808) 522-9209

Web: www.hongwanjihawaii.com Email: hqs@honpahi.org

MESSAGE FROM THE BISHOP



At my first Hawaii Kyodan Board of Directors Meeting as the new Bishop in August, I requested that I would like to visit all the temples during the first year of my tenure. The purpose of my visit is to personally connect with the temple members and express my appreciation for their support and dedication to the HHMH. During the first five months as the Bishop, I was able to visit several temples on various occasions. I am very grateful for the ministers and temple leaders who kindly welcomed me to their temple Sangha.

I wish to share all of my experiences of these visits, but this time, I would like to write about my experience at Kohala Hongwanji Mission on the Big Island. I was invited to attend the Honokaa's Peace Parade on October 21. Since I have never been assigned to any of the Big Island temples, I thought this could be an excellent opportunity to experience the work of the Big Island ministers. So, I rented a car (they gave me a Dodge Challenger) and drove a total of 190 miles from Hilo to Kona. I joined the Honokaa Peace Parade and visited Paauiilo Hongwanji on Saturday. The Kamuela Hongwanji Board members kindly prepared a delicious potluck dinner that evening. I officiated the Sunday Service at Kamuela Hongwanji Mission and then drove to Kohala Hongwanji Mission on Sunday.

After enjoying the beautiful Kohala Mountain Road, I was greeted by six temple members at Kohala Hongwanji (President Ms. Wendy Nickl). The temple building, which was dedicated in 1977, is beautifully maintained by the temple members. The altar design is unique, very simple with clean lines and geometric angles. There are special touches like a hidden sliding tray built into the altar. Along with some traditional altar ornaments and the statue of Amida Buddha, the tables and their special square gold wallpaper pieces were put up by Kohala members. The large hanging wooden wisteria carving on the front of the temple building was made by a plantation employee who was skilled in carving and woodworking. I was very moved to learn that many hands went into all aspects of the temple's construction. (Continued on page 4)

PRESIDENT'S MESSAGE



To Our Sangha,

I'm happy to announce that the major portion of the structural foundation strengthening work at the social hall is completed. See page 8 for photos. The remaining exterior spall repair work will be completed in December and other additional spall repair work will continue into January of next year. It was brought to my attention that the power roof ventilators (PRVs) and supporting structural framing above the hall's ceiling will need to be replaced. This will require postponement of the replacement of the hall's vinyl composition tile flooring to avoid having heavy equipment needed for the PRV work from damaging the new flooring.

We have scheduled the tent fumigation of the Temple/Lotus Adult Day Care Center Building and parsonage to occur on Friday March 29, 2024 to Saturday, March 30, 2024. This will require the shutdown of the LADCC on that Friday, so please plan accordingly if you have kupuna enrolled there.

We are updating our membership records and need your help in providing that information by filling out and returning the form on page 11, which also serves as an RSVP for our head count of the New Year's Party attendees and Keirokai honorees.

We are also continuing our efforts to update the contact list for those who have purchased the use of niches in the columbarium (Nokotsudo). If you have not done so already, please fill out and return the form on page 10.

In closing, I wish you all a safe and joyful holiday season!

In Gassho with our hands together,
Boyd Marumoto

I visited the Kohala Hongwanji Cemetery after that. I placed my hands together in Gassho in honor of those placed at the gravesite. I deciphered some of the aged gravestones that say, "Hiroshima-ken" and "Yamaguchi-ken" etc. They must be gravestones of the early immigrants from Japan who established the foundation of the Japanese-American community in Hawaii. They have left a lasting and positive impact on Hawaii, contributing to its economic development, cultural diversity, and social cohesion. I wondered if this place could be the closest gravesite to Japan, their home country, on the Big Island.

A visit to Kohala reminded me of the sacrifices, dedication, and contributions of our forefathers. In November, we observed Eitaikyo. Eitaikyo is often translated as the Sangha Memorial Service. It is the service to pay tribute to those who passed before us. They dedicated their lives and handed down the joy of the Nembutsu to us. Eitaikyo is a momentous occasion to thank our forefathers and then listen to the teaching, which is a gift from our forefathers. Our forefathers did not just leave a wonderful temple building for us. They also left us a wonderful place where we can feel, experience, and appreciate the warmth of life and the warmth of Namo Amida Butsu.



As recipients of Amida Buddha's Wisdom and Compassion, we have a responsibility, with a sense of gratitude and appreciation, to share such warmth of life (the joy of interdependence) with others. Let us together create a temple, a community where all people, regardless of their religious, ethnic, or cultural background, can assemble to receive guidance and inspiration, and realize that our lives are always illuminated, affirmed, and appreciated within the Compassionate Light of Amida Buddha.

Namo Amida Butsu
Rev. Toshiyuki Umitani, Bishop

MOILIILI HONGWANJI "HONGWANJI FOR MAUI SHIRT"

With the fires that devastated Maui in August 2023, Mō'ili'ili Hongwanji is hosting a special project - Hongwanji for Maui Shirt. All proceeds will benefit Honpa Hongwanji Mission (HMMH) and be dispersed into the community on Maui & Lahaina Hongwanji Mission/their members for ongoing relief efforts.

Background of the shirt: A modern design while incorporating some Aloha, our sagarifuji wisteria, and the Maui Island flower- lokelani.

Price: \$25/each (small to extra-large). \$27/each (2XL). Additional donations are welcome. Place your order today at:

<https://www.moiliilihongwanji.org/hongwanji-for-maui-shirts/>

Pickup or Shipping: We encourage you to pick-up your order at Mō'ili'ili Hongwanji Mission. We can ship for an additional fee. Please note that we can ship to the neighbor islands and continental US. Additional time is needed to process all orders.



CONDOLENCE:

Mr. Steven Don Lee, a member of Kahului Hongwanji Mission, passed away on October 2, 2023. Mr. Lee served as the President of Kahului Hongwanji Mission. The Ingo of AI-GYO-IN 愛樂院 which translates as "One who rejoices in the most profound dharma" in recognition of his life of Nembutsu was conferred by Bishop Toshiyuki Umitani on October 28, 2023.

2024 LEGISLATIVE ASSEMBLY

The 2024 HHMH Legislative Assembly (Giseikai) will be held on February 9 & 10, 2024 in the Honpa Hongwanji Hawaii Betsuin Social Hall and via Zoom. The Legislative Assembly Aloha Luncheon & Living Treasures of Hawaii Recognition will be held on Saturday February 10, 2024 at the Hilton Hawaiian Village Coral Ballrooms. The registration fee is \$125.00 for both delegates and observers and \$100.00 for the luncheon only. The registration forms were sent on November 8, 2023 to the Temples & Council Presidents. Please submit the completed registration form through your temple by December 31, 2023. The 2024 Giseikai documents & Zoom link will be emailed to attendees in early February 2024. For the Rap Session, the registration and fee will be determined.

ANNUAL APPRECIATION GATHERING FOR THE RETIRED MINISTERS AND THEIR SPOUSES

On November 1, 2023, Bishop Umitani and President Dr. Tamamoto hosted the annual appreciation luncheon for the retired ministers and their spouses. Due to the COVID-19 pandemic, we were not able to hold this gathering for the past three years. Bishop Umitani officiated over the opening service at the Honpa Hongwanji Hawaii Betsuin Hondo. During the service, the names of the ministers and their spouses who passed away during the past three years (14 individuals) were read, and the participants had a moment of silence in their memory. Bishop Umitani and President Dr. Warren Tamamoto expressed their sincere appreciation for the contributions that the retired ministers and their spouses made to the Honpa Hongwanji Mission of Hawaii and conveyed the appreciation that the current ministers have for their mentors and teachers. After the service, the retired ministers and their spouses gathered and enjoyed a beautiful bento meal at the Bishop's Residence. It was an excellent time to reconnect with mentors and old friends.



HQ BOOKSTORE UPDATE

HHMH HQ Bookstore is now selling jewelry that was handmade by PBA students in their elective classes.



PBA said “Students grades 9-12 in Beginning Jewelry Making at PBA created these pieces for their final project. The beads are made of mixed materials and the metals are gold and silver plated over brass. Half of each purchase will go back to the student artist to support their entrepreneurship experience and the other half to support the HHMH bookstore.”

Sales prices range from \$5 to \$30. All the jewelry is so cute and attractive. It will be a good holiday present for you, your family, and your friends. Please stop by the bookstore at the HQ Office to browse the jewelry made by talented PBA students.

TRIPLE CELEBRATION BUDDHIST EDUCATION SERIES

Honpa Hongwanji Mission of Hawaii Triple Celebration Committee has organized a Triple Celebration Buddhist Education Series to be held online throughout the year of 2024.

Topics in the education series align with the structure of the *Kyogyoshinsho*, a work written by Shinran Shonin in 1224 that was the basis for establishing the Jodo Shinshu Tradition. The *Kyogyoshinsho* shows the way of attaining enlightenment (sho) through reciting the Name of Amida Buddha (gyo) caused by entrusting heart (shin) which is taught in the Larger Sutra (Kyo).

The education series will consist of 4 main topics:

The Significance of the establishment of Jodo Shinshu Tradition

Essence of Kyogyoshinsho

Transmission of Jodo Shinshu from the past to present

The world is waiting for Buddhism and Shinran Shonin

The first two sessions are on Saturday, January 13 & Saturday, January 20 from 10 a.m. – 11:30 a.m. (Hawaii Standard Time). The featured speaker will be Dr. David Matsumoto of the Institute of Buddhist Studies, Berkeley. His lectures are “What is Mahayana Buddhism?” and “What is Pure Land Buddhism?”

The series will continue in February with two lectures, and then from March through August there will be one session per month. Please see the attached flyer for more details.

More information about individual sessions, including specific session flyers, is available on the Buddhist Study Center website.

Organizers hope the series will help participants relate the teachings to their lives, bring the Buddha’s wisdom to social issues, and inspire individual temples to hold Buddhism classes. The overarching goal is transforming people’s lives guided by Amida Buddha’s Primal Vow.

The sessions will be delivered online via Zoom. To receive the Zoom link, please register using this link:

<https://forms.gle/kXbGaoyLyqKe2w629>

THE 41st WORLD JODO SHINSHU COORDINATING COUNCIL MEETING

When: October 1, 2023 (Japan Time)

Where: Via Zoom

Highlights of Honzan Reports

(1) The Joint Celebration of the 850th Anniversary of Shinran Shonin’s Birth and the 800th Anniversary was conducted from March 29 to May 21, 2023, over five sessions over a course of 30 days. 75,000 delegates were said to have attended the celebration. On May 10, the designated day for overseas Hongwanji temples to attend the ceremony included 780 delegates from the overseas districts and regions. (BCA 513, Hawaii 167, Canada 36, South America 19, Taiwan and Hong Kong 40, and others 5.

(2) Maui Wildfires - In support of recovery efforts, the ‘Relief Support for Maui Wildfires’ fund drive has been set up within Jodo Shinshu Hongwanji-ha permanent support fund, ‘Tasukeai Undo Bokin,’ and a fundraising campaign is underway.

(3) The English Tokudo Shurai Training - For 2023 English Tokudo Shurai (training) will be held in person in Kyoto from December 6-16, 2023, at the Nishiyama Betsuin in Kyoto, Japan. Participants are 10 from BCA and one from Hawaii.

(4) Relocation of the International Department Office – Due to the deterioration of the current Hongwanji International Center building, the International Department office will be moving from the International Center to the Administration Building sometime within this fiscal year calendar. The International Center will no longer be used.

- Agenda: Business**
- New Business
 - Improvement of Training Program in Japan
 - Young Buddhists' International Cultural Study Exchange (YBICSE)
 - Next host district and dates

Highlights of New Business:

- 1) Currently, Honzan is thinking of continuing to have the Kyoshi Training in Jodo Shinshu Center, Berkeley, CA. That being the case, after the Tokudo Training in Japan, there is not much opportunity to go to the mother temple, Hongwanji for overseas ministers. To create more opportunities and connections, Honzan is planning to have a short session at the Hongwanji in Kyoto before official assignment as a Kaikyoshi minister.
- 2) YBICSE program may resume in 2024. The official announcement will be determined later

**WINTER TETSUYA
FINALS STUDY WEEK @BSC
DECEMBER 10-14 5 PM-8 AM**

WHAT IS TETSUYA?

Tetsuya is an opportunity for university students who are associated with the Honpa Hongwanji to study together during finals week. The Buddhist Study Center will be open overnight; with study, sleep, shower, and recreational space for those late-night cram sessions. Dinner is provided!

MENU DINNER @ 6:00 PM	SUNDAY Tacos	MONDAY Kalua Pig & Cabbage
TUESDAY Curry	WEDNESDAY Shoyu Chicken	THURSDAY Lasagna

IF INTERESTED...

Please contact Emi (ehashi@honpahi.org). Specify your finals schedule, any dietary restrictions or requests for "study materials", note cards, coffee, etc.

COMMITTEE ON SOCIAL CONCERNS UPDATE

The Committee on Social Concerns recently made the following donations from the *Maui Wildfire Disaster Relief Fund* to support recovery efforts on Maui:

- \$10,000 Rev. Ai Hironaka (Omimai)
- \$10,000 Maui Foodbank
- \$5,000 A Cup of Cold Water
- \$5,000 The Maui Farm
- \$10,000 Hawaii Community Foundation Maui Strong Fund
- \$5,000 Red Cross of Hawaii
- \$10,000 World Central Kitchen

As of October 31, we have raised close to **\$700,000** and distributed **\$288,400** from the *Maui Wildfire Disaster Relief Fund*. Combined with **\$28,000** distributed from our *Social Welfare Fund*, **we have given a total of \$316,400 in emergency aid.**

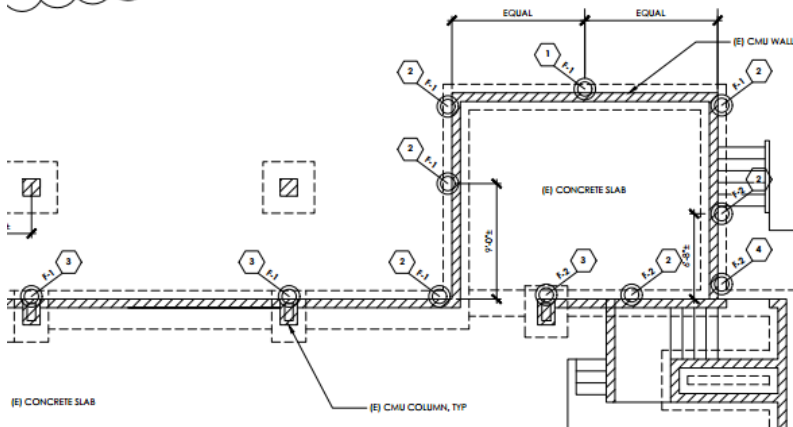
Previous donations from the Maui Wildfire Disaster Relief Fund:

- \$10,000 Hawaii People's Fund Maui Aloha
- \$5,000 Council for Native Hawaiian Advancement Kāko'o Maui Fund
- \$5,000 Maui Mutual Aid via Grants Central Station
- \$1,400 Rev. Ai Hironaka (Omimai)
- \$1,000 Rev. Gensho Hara of Lahaina Jodo Mission (Omimai)
- \$1,000 Rev. Takayuki Meguro of Lahaina Shingon Mission (Omimai)

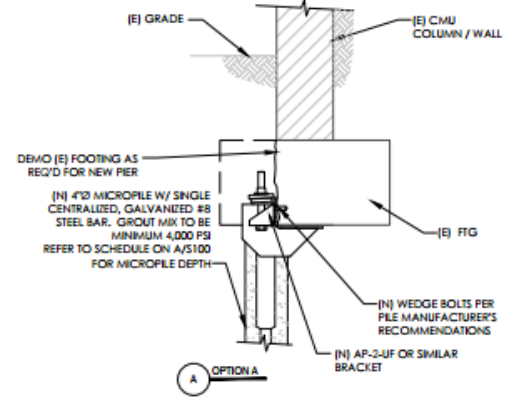
We also gave **\$2,000** Omimai to each member of Lahaina Hongwanji and other members of our Hawaii Kyodan Ohana who were impacted by the wildfires totalling **\$210,000**. The Maui Wildfire Emergency Response Ad-Hoc Committee provided the list of recipients.

SOCIAL HALL FOUNDATION STRENGTHENING PHOTOS & DIAGRAMS

Locations of micro-piles



Detail of Supporting bracket on micro-pile



Micro-pile rod being drilled into the ground



Micro-pile in metal casing



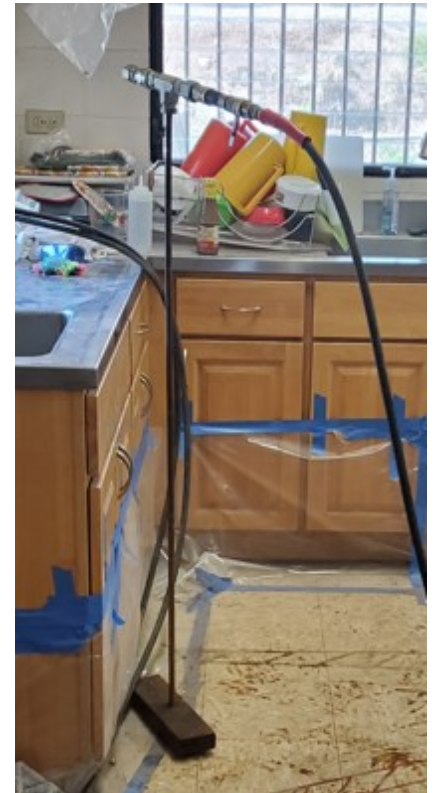
Micro-pile with bracket attached on top of it



Condor soil stabilizer was injected into the soil under the slab on grade using these tubes & hoses (Right photo)



Hydraulic jacks were used to transfer the column loads to the micro-piles



Through our *Social Welfare Fund*, we were able to immediately support relief efforts on Maui in the aftermath of the disaster giving **\$28,000** to various organizations and affected individuals. Your generous support of our Annual Social Concerns Fund Drive ensures we have the ability to respond quickly when disasters strike.

- \$10,000 Hawaii Community Foundation Maui Strong Fund
- \$10,000 Maui Food Bank
- \$5,000 Hawaii Red Cross
- \$1,000 Makawao Hongwanji to support evacuees and first responders at local evacuation center with food and water.
- \$1,000 Rev. Ai Hironaka of Lahaina Hongwanji Mission (Omimai)
- \$500 Rev. Gensho Hara of Lahaina Jodo Mission (Omimai)
- \$500 Rev. Takayuki Meguro of Lahaina Shingon Mission (Omimai)

In the spirit of compassion, Honpa Hongwanji Mission of Hawaii established the Maui Wildfires Disaster Relief Fund. All donations collected will go to support Lahaina Hongwanji Mission and relief efforts on Maui. If you could help support this effort, we would truly appreciate it.

You will find a large button for Maui Wildfires Disaster Relief near the top of our Donate page: <https://hongwanjihawaii.com/donate/>



QR code for Maui Wildfire Disaster Relief Fund through PayPal

Updates for Maui Wildfires Disaster will be shared on our website at <http://honpahi.link/fire>
Mahalo for your generosity and support during this time of tragedy.

Donations of prizes and drinks for the New Year's Party can be dropped off at the Social Hall on Sunday mornings 8:00 am to noon. Thank you very much.

NEW YEAR'S PARTY (SHIN'NENKAI) AND ANNUAL MEMBERSHIP MEETING

Please RSVP by sending in this form if you plan to attend.

When: Saturday, January 27, 2024 **Time:** Tentatively at 5:00pm

Location: Aiea Hongwanji Mission's Social Hall

Attendees ages 13 through 79: _____ x \$10/each = \$ _____

Children ages 7 through 12: _____ x \$5/each = \$ _____ (No charge for children under age 7 and Keirokai Honorees)

TOTAL ENCLOSED: \$ _____

Name (s) of Keirokai Honorees age 80 and over: _____

Also, to ensure that the Honpa Hongwanji Mission of Hawaii 2024 Calendar is mailed to the correct address, and to update our records, please provide the following contact information:

Primary member's name: _____

Mailing address: _____

Phone number (s): _____

Email address: _____

Mail this form by 12/31/2023 to:

**Aiea Hongwanji Mission
99-186 Puakala Street
Aiea HI, 96701**

Or email to: AieaJiko@gmail.com



ANNUAL DUES REMINDER

The annual membership dues for Aiea Hongwanji Mission are \$125.00 for a **Family Unit** which consists of the Primary member, a spouse, and dependent children under 25 years of age. However, if the Primary member of a Family Unit is less than 40 years of age the annual dues is only \$50.00. Dues can be paid by checks made out to, "Aiea Hongwanji Mission" or simply "AHM", and mailed to 99-186 Puakala Street, Aiea, Hawaii 96701. (Note that the online payment feature at the AieaBuddhistTemple.org website has been deleted.)

REQUEST FOR CONTACT INFORMATION FOR ASSIGNED NICHE IN THE AHM COLUMBARIUM

To all families and/or individuals who have paid to use Columbarium niches or have inherited the responsibility to manage the use of the niches:

AHM is in the process of updating its database regarding contact information for Columbarium niches that are currently in use or those niches that payment have been made for their use, but are vacant. Please note that purchasers for the use of a niche who are active and able are required to be a dues paying member of AHM,. However the designated contacts are not required to be members of the AHM, although they are highly encouraged to be. It is important that the contact information is kept current and available to the AHM because all urn deposits and withdrawals must be authorized in writing by one of the contact persons. Voluntary surrender of a niche must also be in writing by one of the contact persons. Contacts for each niche must provide a current mailing address and telephone number. It is highly encouraged that contacts also provide an email address which will be entered into our Columbarium database. Please note that failure to maintain status as an AHM member as noted above, or failure to maintain current contact persons' information may result in forfeiture of the niche which would then revert to the AHM's Columbarium inventory.

Please use the form below to provide contact information for the niche that payment has been made for its use. If the Niche Number at the top of the form is unknown, please enter the name of the person who initially paid for the use of the niche.

Please return this contact information to Dean Yamaguchi c/o Aiea Hongwanji Mission, 99-186 Puakala Street, Aiea, HI 96701. Alternatively, a scanned version of the contact information may be returned to Dean Yamaguchi via email at deanyamaguchi4@gmail.com. If you have any questions, please contact Dean Yamaguchi via the above email address or by phone at (818)-371-2841. Thank you in advance regarding this request for Columbarium niche contact updates.

Niche Number: _____

The Niche must have two (2) contact persons with current mailing addresses and telephone numbers on file with the AHM.

Failure to maintain status as an AHM Gojikai member or to maintain current contact persons information may result in forfeiture of the Niche, which would then revert back to AHM's columbarium inventory.

Contact Persons

#1

Name: _____

Mailing Address: _____

email address: _____

Phone number: (Res.) _____ (Bus) _____ (Cell) _____

Date: _____

#2

Name: _____

Mailing Address: _____

email address: _____

Phone number: (Res.) _____ (Bus) _____ (Cell) _____

Date: _____

Mochitsuki at Aiea Hongwanji Mission

Saturday, December 30, 2023

8:00 am to 11:30 am



Each year, Aiea Hongwanji puts on their annual mochitsuki (mochi making) event and opens it to the public. We feel this is a great cultural experience for young and old alike and would like to perpetuate the tradition started by members of generations past. To do this, WE NEED YOUR HELP! Please come and embrace this experience while you help us at the various work stations: Steaming the mochi rice, pounding the rice in the "Usu" (stone mortar), forming and filling the mochi with "An" (red bean paste) and of course, EATING the little rice dumplings! AHM will also have a children's table so they can partake in the tradition. Parent supervision would be greatly appreciated. We will also be taking orders on a first come first serve basis for a nominal charge. If you have any questions or can sign up to help (even for a little time), please contact:

Claire Tamamoto, [claire2164@gmail](mailto:claire2164@gmail.com) or at (808) 429-1282. HOPE TO SEE YOU THERE!

Family Memorial Service

Buddhist consider the memorial service a significant occasion to remember the deceased with feelings of gratitude and love. The memorial service provides an opportunity to pay tribute and recall cherished memories of the departed, while listening to the Buddha Dharma. The service is not for appeasing the spirits of the deceased or for the sake of the deceased, but rather for the sake of the living. In remembering the deceased we acknowledge their influence on our lives as well as the importance of living the Buddha Dharma.

If your family would like to arrange a memorial service for your loved one, please call Reverend Eric Matsumoto at (808)-488-5685, or leave a message on the office phone: (808)-487-2626. You may schedule the service either before or after the memorial date.

December 2023

3rd	Paulette Kikue	Watanabe
7th	Keiji "Bob"	Tokushige
7th	Joe Haruto	Taniguchi
7th	Mitsuko "Miriam"	Nishimoto
13th	Wataru	Minami
13th	Asayo	Fujii
25th	Mitsuo	Nagamine
25th	Harry Tadaichi	Kanbara
25th	Tomio "Tom"	Higuchi
33rd	Toshiaki Robert	Onaka
33rd	Katsuko	Omori

January 2024

7th	Harriet Shizuyo	Watanabe
7th	Doris Tamie	Sumida
13th	Grace Toshie	Tokushige
13th	Shizue	Nakagawa
13th	Itsuji	Kazunaga
17th	Masao	Saiki
25th	Suyeno "Myrtle"	Ukita
25th	Tadaichi	Kouchiyama
25th	Tamotsu	Kawamoto
33rd	Kina	Omura
33rd	Akiyo	Honda
50th	Yoshiko	Nishiiwa

Aiea Hongwanji Mission
99-186 Puakala Street
Aiea, HI, 96701

Change Service Requested

Non-Profit Org.
U.S. Postage
Paid
Permit No. 42
Aiea, HI 96701



Temple Calendar of Events for December 2023

3 Sun	9:30am	Hawaii Buddhist Council Bodhi Day Service at Nichiren Mission of Hawaii (To be Live-streamed at AHM)
3 Sun	1:00pm	United Jr. YBA of Oahu Meeting at Waipahu Hongwanji Mission
4 Mon	9:30am	Oahu District Ministers Association Meeting
5 Tue	9:00am	Preschool Temple Services
8 Fri	10:00am	Lotus Daycare Activity in the Social Hall
10 Sun	9:00am	AHM Special Bodhi Day Service
	11:00am	Welcome Luncheon for Rev. Eric & Mrs. Tamayo Matsumoto
11 Mon	7:00pm	Oahu Hongwanji Council Meeting
17 Sun	8:00am	Temple Beautification Day (No service)
19 Tue	7:00pm	AHM Board of Directors' Meeting
21 Thu	10:00am	Lotus Adult Day Care Service and Visitation
24 Sun	9:00am	Weekly Sunday Family Service
30 Sat	8:00am	Mochi-making (Mochitsuki)
31 Sun	3:00pm	AHM New Year's Eve Service

Temple Calendar of Events for January 2024 (as of Nov. 17, 2023)

1 Mon	10:00am	AHM New Year's Day Service (Gantan-E)
7, 14, 21, & 28 Sun	9:00am	Weekly Sunday Family Services
		1/14/24 Shinran Shonin's Memorial Service
		1/21/24 Sunday Service
		1/28/24 Sunday Service commemorating Sakyamuni's Turning of the Wheel of Dharma or First Sermon
10 Wed	9:00am-10:30am	Preschool Temple Services
15 Mon		MLK & Shinran Shonin Day Holiday (Preschool & Lotus closed)
23 Tue	7:00PM	AHM Board of Directors' Meeting