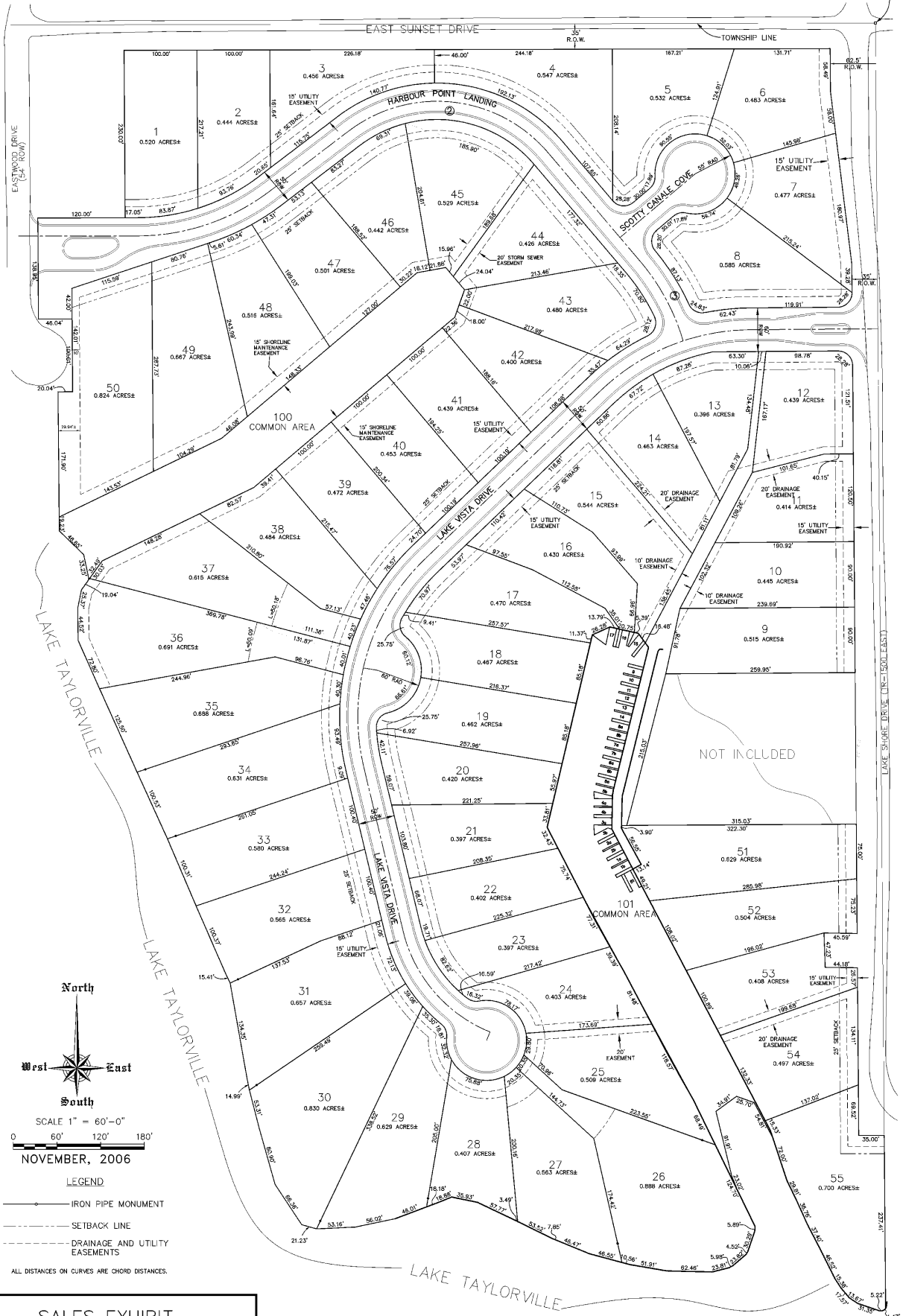


# DAVIS LAKE SHORE ESTATES

PART OF THE EAST HALF OF THE NORTHEAST QUARTER OF SECTION 1, TOWNSHIP 12 NORTH,  
RANGE 2 WEST OF THE THIRD PRINCIPAL MERIDIAN, TAYLORVILLE, CHRISTIAN COUNTY, ILLINOIS.

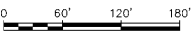
N.E. CORNER  
SEC. 1, T.12N,  
R.2W., 3rd P.M.



North



SCALE 1" = 60'-0"



NOVEMBER, 2006

**LEGEND**

- IRON PIPE MONUMENT
  - SETBACK LINE
  - - - - DRAINAGE AND UTILITY EASEMENTS
- ALL DISTANCES ON CURVES ARE CHORD DISTANCES.

**SALES EXHIBIT**

STAGING  
 PHASE 1 : LOTS 1-8, 35-50, 100  
 PHASE 2 : LOTS 26-34  
 PHASE 3 : LOTS 9-25, 51-55, 101

 <p><b>JOHN L. REYNOLDS, INC.</b>          LAND SURVEYING, PLANNING &amp; ENGINEERING          1025 South Second Street, Springfield, IL 62764-3094          (217)-241-3500</p>	Date: 11/2006
	Sheet No. 1 of 1

JOB NUMBER: 2003-212