

# AI in the Workplace: Shaping the Future of Work and Empowering Employees

TRANSFORMING  
JOBS AND  
ENHANCING  
EMPLOYEE  
CAPABILITIES  
EFFECTIVELY

# Agenda

- **Transformative Impact of AI on the Future of Work**
- **Empowering People Through AI and Human Capital Management**
- **Selecting the Right AI Tools for the Workplace**
- **AI as a Conversational Assistant for Employees**



# CHANGE MIX OF JOBS AND ROLES

## AI Augmenting Jobs

AI will **enhance** traditional jobs by **supporting** human skills and **improving** productivity across sectors.

## Emergence of New Roles

New job roles will emerge that focus on **developing, managing, and maintaining AI systems and related technologies.**

## Need for Adaptability

**Continuous learning and adaptability** are essential for workers to thrive in AI-driven labor markets.

# DISRUPTIONS AND EMPLOYMENT GROWTH FUELED BY GENERATIVE AI

## Industry Disruption

AI can automate **creative and analytical tasks**, transforming traditional industry workflows and processes.

## Job Creation in AI

New employment opportunities arise in **AI development, oversight, and specialized application** fields driven by generative AI growth.



Human Must Be “In The Loop” when AI Concludes “I do not Know” or Becomes Confused or Hallucinates

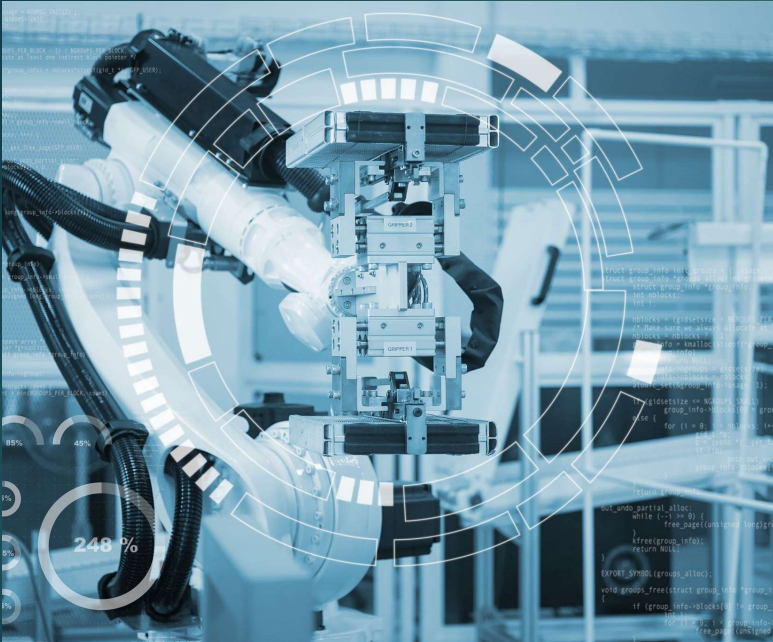
# AUTOMATION OF LOW-STRATEGIC, REPETITIVE TASKS

## Routine Task Automation

AI automates **repetitive tasks**, reducing manual workload and minimizing errors in daily operations.

## Enhanced Employee Focus

Automation frees **employees to engage in strategic and creative work**, improving job satisfaction and productivity.



# GUIDING EMPLOYEES WITH ACTIONABLE INSIGHTS

## AI-Powered Performance Improvement

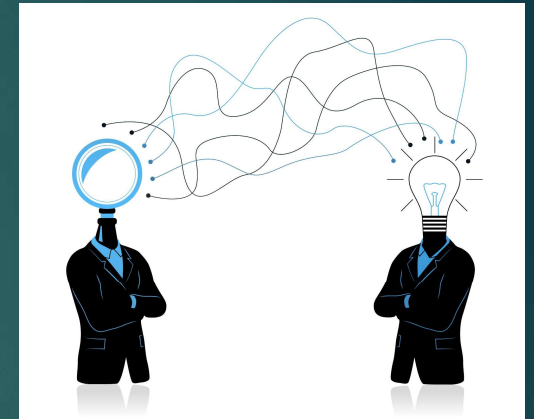
Analyze employee data to identify **areas for performance enhancement** and **provide targeted recommendations**.

## Personalized Skill Development

Personalized guidance from AI helps employees develop **relevant skills tailored to their career goals**.

## Career Path Navigation

Actionable insights to help **employees plan and navigate their career paths** effectively.



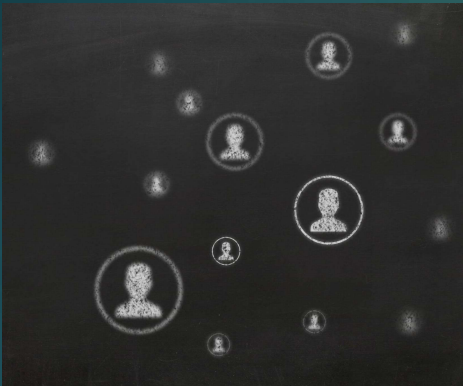
# HUMAN-CENTRIC APPROACHES IN CLOUD WORKFORCE MANAGEMENT

## AI Integration in Workforce

Enhances cloud workforce systems for smarter, efficient, and flexible employee management.

## Human-Centered Strategies

Focus on employee well-being and engagement within cloud-based management systems.



# OPPORTUNITY FOR ENTERPRISE EDUCATION AND COMPETITIVE ADVANTAGE

## AI-Powered Learning Platforms

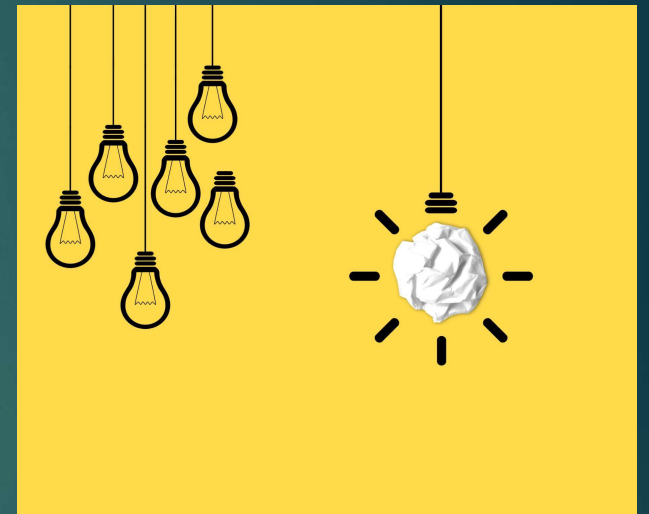
Enable personalized and continuous employee development to **improve skills and performance**.

## Fostering Innovation

Continuous learning **promotes innovation**, helping adapt to changing markets and stay competitive.

## Strategic Competitive Edge

Investing in employee education provides a **strategic advantage** in rapidly evolving competitive markets.



# LEVERAGING RICH PEOPLE-DATA AND WORK-DATA

9

## Employee Skills Data

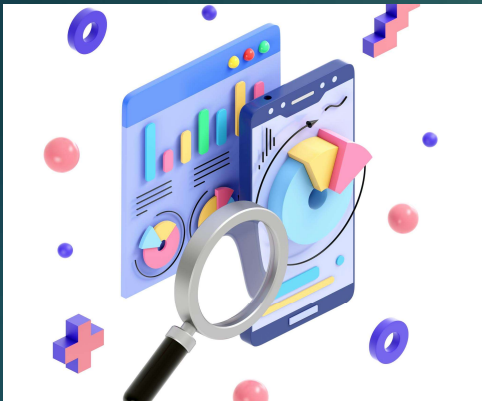
Detailed information on employees' skills allows AI to personalize effective development and training programs.

## Performance and Workflow Analysis

Analysis of performance metrics and work processes helps identify productivity patterns and areas for improvement.

## AI-driven Workforce Optimization

Integrating diverse employee data enables AI systems to offer tailored insights, improving workforce strategies and decision-making.



# INCORPORATING CULTURE DATA, SENTIMENT ANALYSIS, AND BENCHMARKS

## Organizational Culture Analysis

Reveal underlying workplace **values and behaviors** influencing employee engagement.

## Sentiment Analysis

Use AI to interpret **employee emotions and attitudes** from feedback and communications.

## Benchmarking for Improvement

Compare engagement metrics against industry standards to **identify improvement opportunities**.



# ENSURING FAIRNESS, INCLUSIVENESS, TRANSPARENCY, PRIVACY, AND RELIABILITY

11

## 1. Fairness and Inclusiveness

Inclusiveness to achieve equitable outcomes, and avoid creating or reinforcing bias.

Requires diverse teams to implement solutions, along with rigorous testing and Evaluation.

## 2. Transparency

Responsible use includes explaining when, how, and why AI is being used as part of a given solution.

Request providers spell out the safeguards in place to protect against potential risk

## 3. Privacy and Security

Prioritize importance of protecting customer data and proprietary information from attack, manipulation, and other malicious behavior.

Implement industry-standard cybersecurity practices such as SOC audits and ISO certifications

## 4. Reliability

Continuous training, testing, and feedback to maintain and enhance it over time.

Monitor solutions To maintain trustworthiness and responsive, striving for latest and most accurate datasets, **monitored by humans** for unintentional bias.

# 24/7 ACCESSIBILITY AND PLAIN LANGUAGE INTERACTION

12

## Round-the-Clock Availability

AI assistants operate continuously, ensuring **employees receive support anytime, day or night.**

## Natural Language Interaction

AI communicates in simple, clear language, making **it easy for employees to understand and engage.**

## Efficient Task Assistance

AI helps employees complete queries and tasks quickly, improving workplace productivity.



# DYNAMIC, CONTEXT-AWARE RESPONSES VERSUS STATIC CHATBOTS

13

## Static Chatbots

Use predetermined scripts and do not understand the context of conversations.

## Context-Aware AI Assistants

Advanced AI assistants analyze context, tailoring responses dynamically for better relevance and accuracy.

## Benefits of Dynamic Responses

Dynamic responses improve user interaction by providing personalized and accurate answers in real time.



# IMPORTANCE OF SELECTING ADVANCED, SECURE, AND ETHICAL AI SOLUTIONS

14

## Advanced AI Capabilities

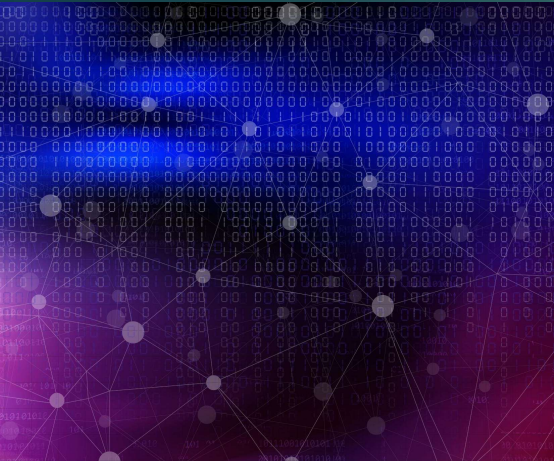
Selecting AI with advanced capabilities enhances efficiency and provides intelligent support to employees.

## Security and Privacy

Prioritizing AI security and privacy safeguards sensitive organizational and employee data from breaches.

## Ethical AI Use

Ethical AI ensures responsible use, fairness, and transparency in supporting organizational goals.



## Transformation of Job Roles

AI is fundamentally changing job roles by automating routine tasks and enabling new skill requirements.

## Empowering Employees

Insightful AI management tools empower employees to make better decisions and improve productivity.

## Ethical AI Adoption

Human-centric, ethical AI adoption is essential to maximize workforce potential and maintain competitive advantage.

# Conclusion

Contact [Karen@CreateInnovAI.com](mailto:Karen@CreateInnovAI.com) OR [Click Here to Request Contact](#)