



DESTINY GRAVES  
P O R T F O L I O





# C O N T E N T S

“Designing with Simplicity, Safety, Unity, and Love: Crafting spaces that are clear in purpose, safe in experience, inclusive in nature, and heartfelt in impact.”

Destiny Graves

---

SWAMP SOCIAL PAVILION

0 1

---

THE SENECA

0 2

---

CREOLE CREAMERY

0 3

---

THE CHEESE CAVERN

0 4

---

BLUE HORIZON MASTER PLAN

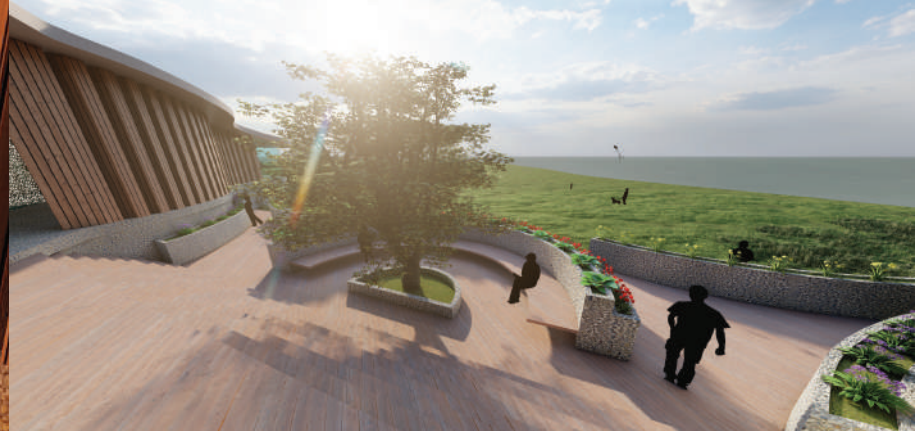
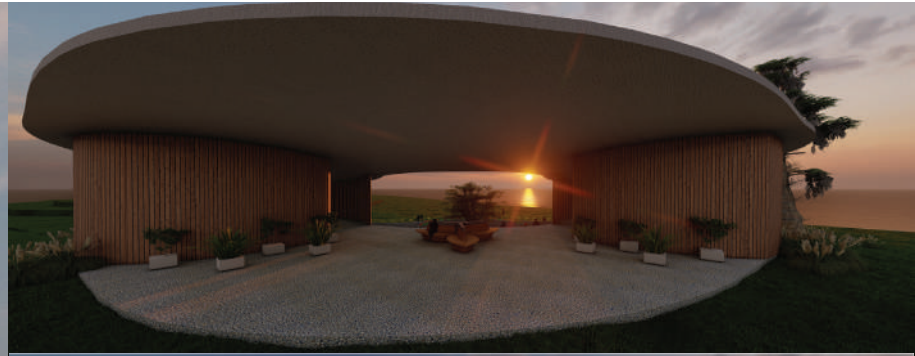
0 5

---

# INSPIRATION FROM NATURE

## DERIVED FROM THE RIVER

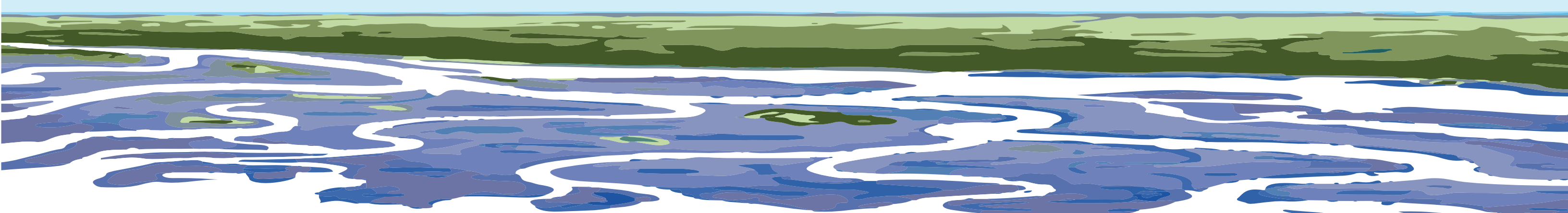
SWAMP SOCIAL PAVILION | BATON ROUGE, LOUISIANA



The Swamp Social Pavilion, nestled on the levee in Baton Rouge, Louisiana, embodies the sinuous grace and vitality of the Mississippi River through its architectural form and function. Designed as an open-air pavilion for the Baton Roots Garden, a nonprofit dedicated to community agriculture, the structure draws inspiration from the river, delta, and sandbar, mirroring these natural forms in its flowing, organic layout. The curvature of the pavilion is not merely aesthetic but strategically enhances the interaction between the community and the cultivated landscapes. It features distinct areas like the Riverbend Patio and Delta Deck, which foster community engagement and agricultural productivity, underscoring the design's symbiosis with the river's dynamic ecosystem.

This project goes beyond architectural design; it serves as a beacon for community gathering, education, and sustainable urban agriculture. The main entrance, dubbed "The Harvest Gate," acts as a grand threshold that showcases the fruits of communal labor and invites residents to partake in the garden's bounty. Inside, the Solarium Sow Room and the Seedling Sanctuary offer spaces for growth and learning, protected and nourished under the pavilion's sheltering arms. Through thoughtful design that includes the use of local river materials and ecologically sensitive construction practices, the Swamp Social Pavilion aims to be a model of sustainable architecture that harmonizes with its environment and enriches its community.

## MISSISSIPPI RIVER DELTA



### DELTA DECK

Named after the fertile Mississippi Delta, the Delta Deck is a vibrant agricultural hub where extensive food cultivation takes place.

### SEEDLING SANCTUARY

A space devoted to the germination and early growth of plants, providing a protective start before they transition to the outdoor garden.

### SANDBAR FLEX FIELD

An adaptable space like the shifting sands of a riverbank, is designed for modular planting and hosting diverse community events.

### RIVERBEND PATIO

Inspired by the meandering Mississippi River, offers a tranquil setting for relaxation and observation of the garden's natural beauty.

### HARVEST GATE

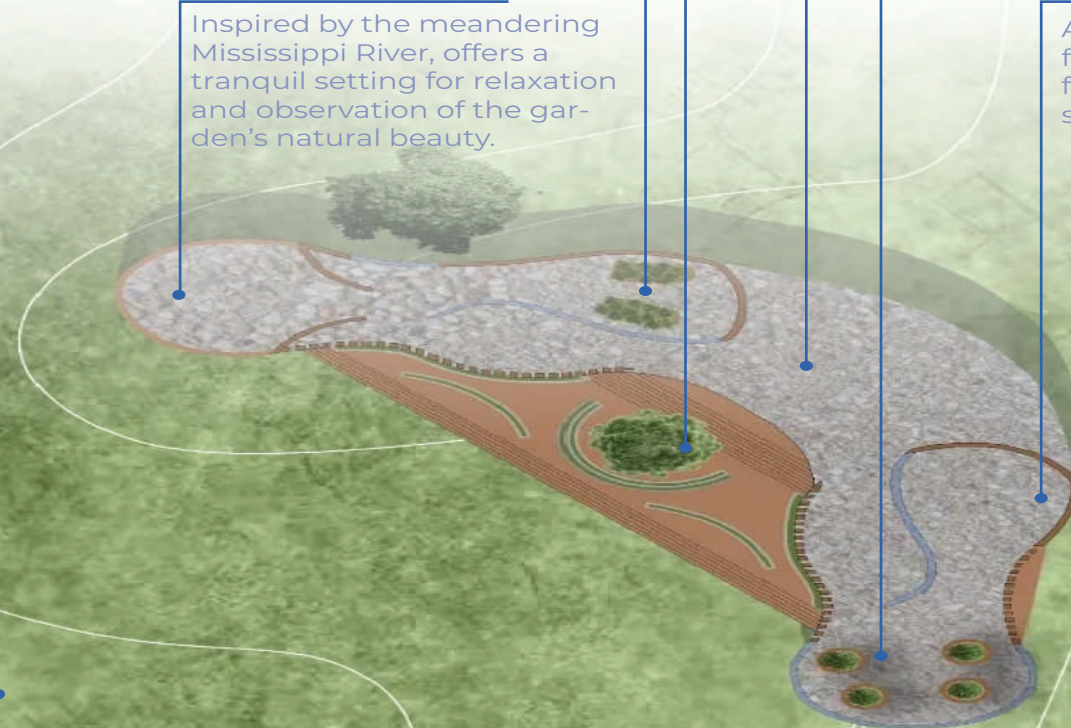
The welcoming focal point where the community can gather and pick up the fresh produce directly from the garden.

### SOLARIUM SOW ROOM

A glass-enclosed space, acts as a center for community learning and interaction, focusing on gardening techniques and sustainable practices.

### RIVER ROOM

A glass-enclosed space, acts as a center for community learning and interaction, focusing on gardening techniques and sustainable practices.



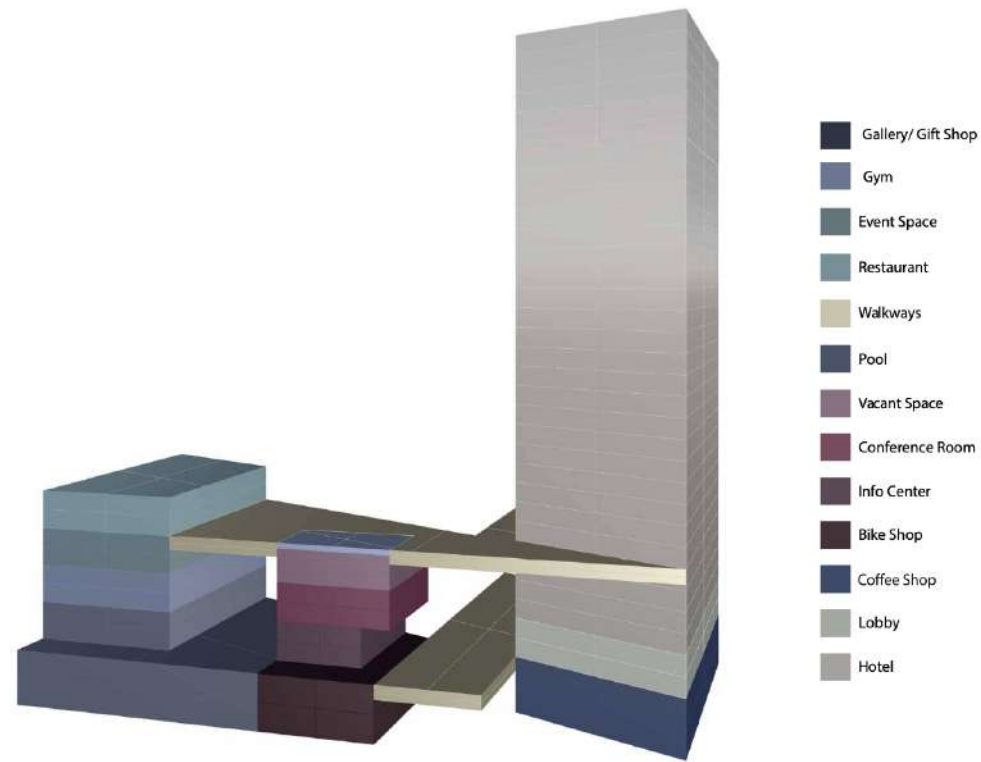
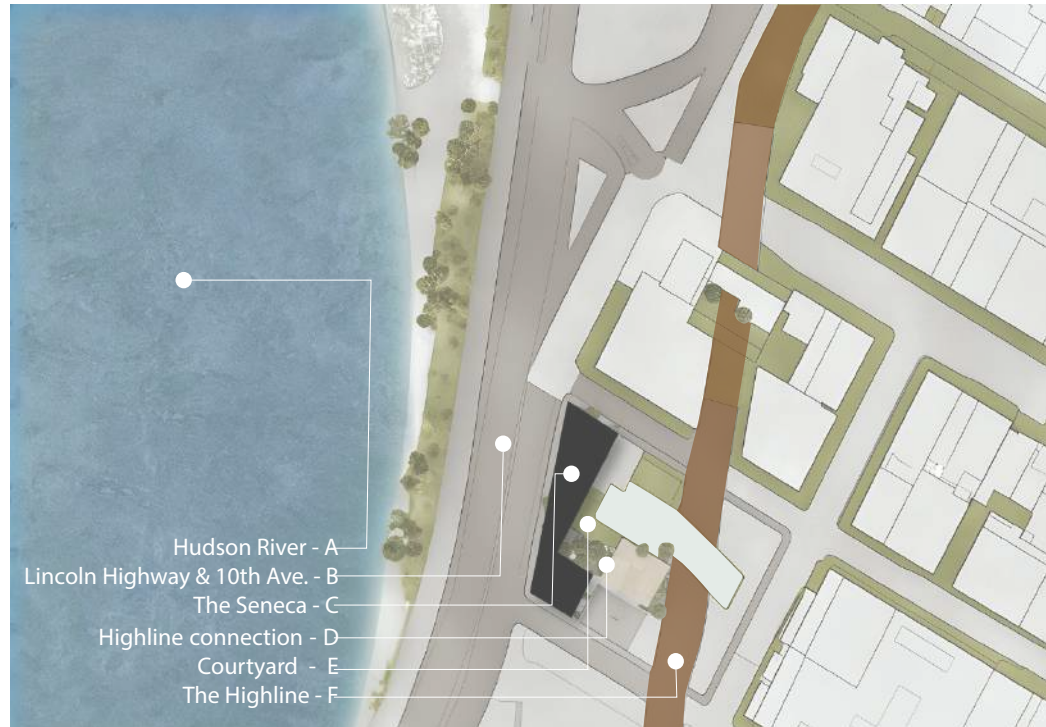
# SENECA REIMAGINED

ARCHITECTURAL HARMONY AND HISTORICAL TRIBUTE

THE SENECA HOTEL | MANHATTAN, NEW YORK.

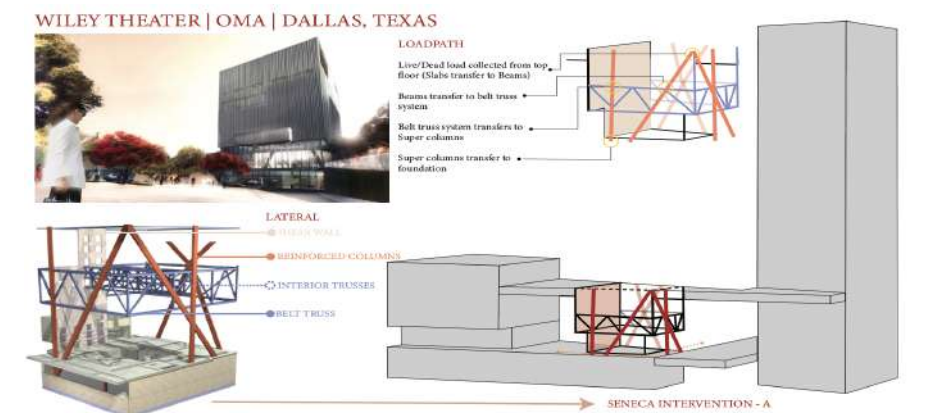
02





The Seneca Hotel is conceived as a modern tribute to the rich history of Seneca Village, intertwining architectural innovation with a deep respect for the past. Situated in the heart of New York, the hotel embraces the ethos of evolution and connectivity, integrating seamlessly with surrounding structures and the vibrant urban landscape. By removing boundaries between the interior and the lush public green spaces, the hotel's form encourages movement and fluidly defines transitions from indoor to outdoor environments. Each design element, from the expansive skylights to the strategic placement of windows, maximizes the panoramic views of the courtyard and the distant Hudson River, enhancing the guest experience through thoughtful spatial planning.

Accessibility is a cornerstone of the hotel's design, ensuring that all spaces, whether public, semi-private, or private, are easily accessible, including unique features like access to the High Line. Functionality is also paramount, with flexible spaces that adapt to various uses, from dynamic gallery exhibitions that celebrate the African American community of Seneca Village to a state-of-the-art bike shop that addresses the urban challenge of transportation in New York. The hotel's rooftop further elevates the guest experience, offering a private deck complete with a pool and restaurant, where visitors can indulge in exclusive views while reflecting on the historical narrative encapsulated within the hotel's gallery. This holistic approach not only honors the memory of Seneca Village but also provides a multifunctional urban retreat that enriches the cultural and social fabric of the city.



# CRAFTING HERITAGE

INDUSTRIAL FUNCTION MEETS SOUTHERN TRADITION

THE CREOLE CREAMERY | BATON ROUGE, LOUISIANA

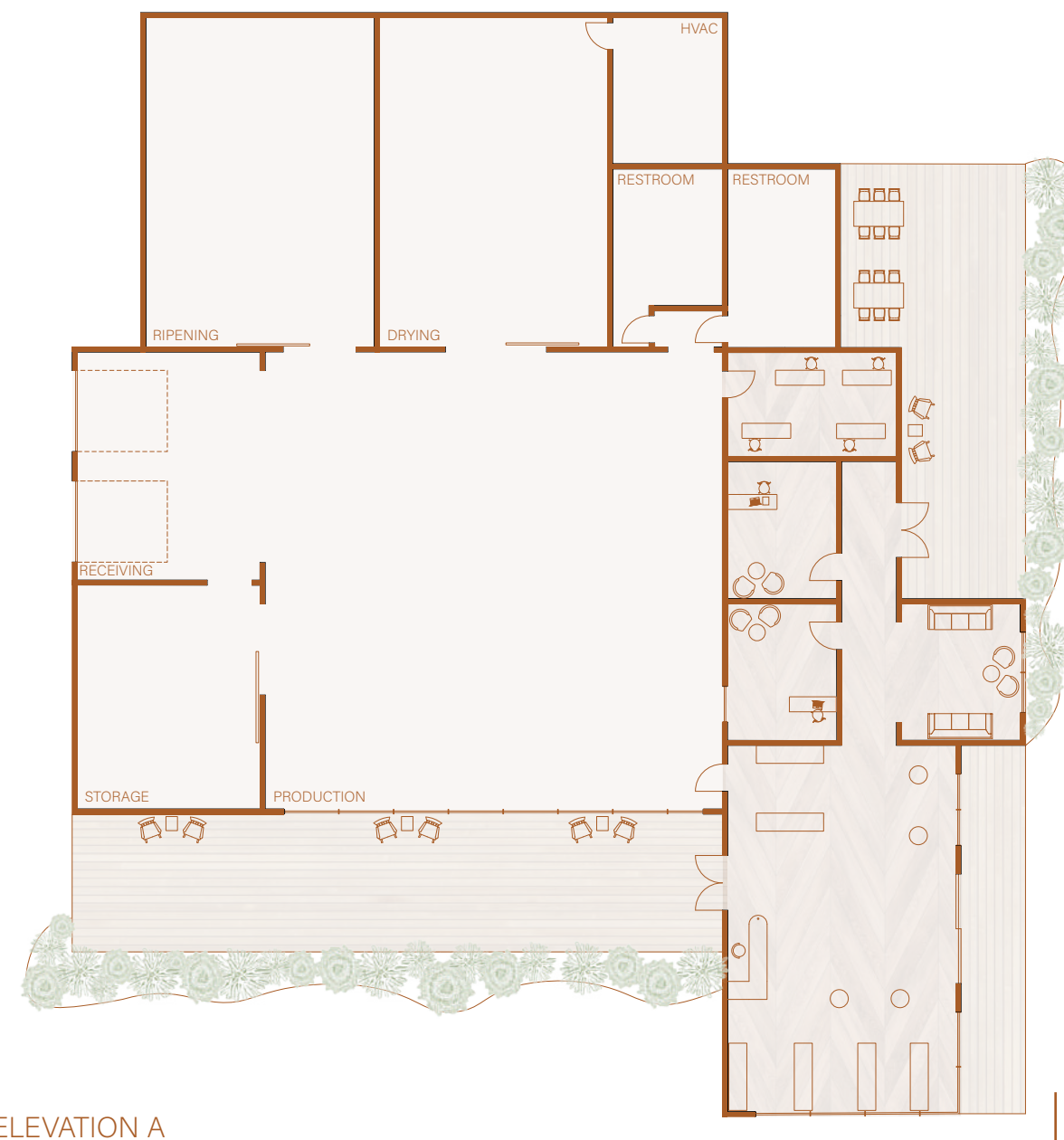
03





The Creole Creamery stands as a beacon of cultural preservation and industrial innovation in Baton Rouge, seamlessly blending the functional needs of a modern cheese factory with the rich architectural heritage of South Louisiana. The entry reflects local housing styles, incorporating elements of traditional cottages and shotgun homes, creating a familiar and welcoming silhouette that resonates deeply with the local community and its history. This design not only serves as a state-of-the-art production facility but also emerges as a vibrant community hub, inviting locals and visitors to engage with the craft of cheese-making through interactive learning experiences and community events.

The visitor experience is further enhanced by the inclusion of a serene pond as a central water feature and winding paths that encourage leisurely exploration. These landscape features are thoughtfully integrated with the architectural design, offering spaces for relaxation and reflection while connecting the various functional areas of the site. The porches, reminiscent of Southern homes and reflecting the informal charm of local cottages and shotgun houses, extend the factory's hospitality and serve as inviting spaces for gathering and learning. Through these thoughtful integrations of architecture and landscape, The Creole Creamery crafts an experience that connects deeply with both the site and its neighboring areas, establishing it as a landmark of cultural and industrial synthesis.



ELEVATION A

ELEVATION B



A

B

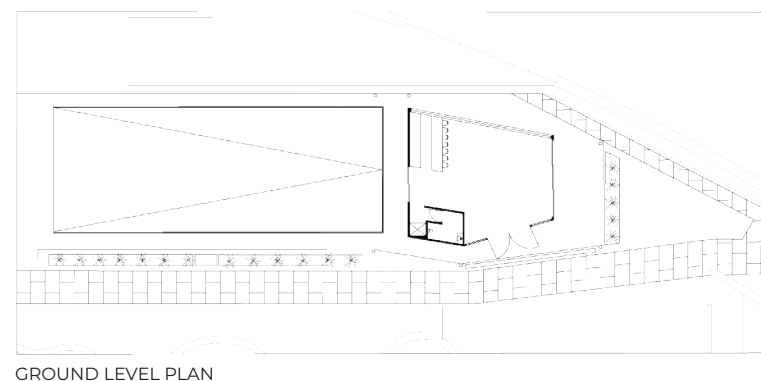
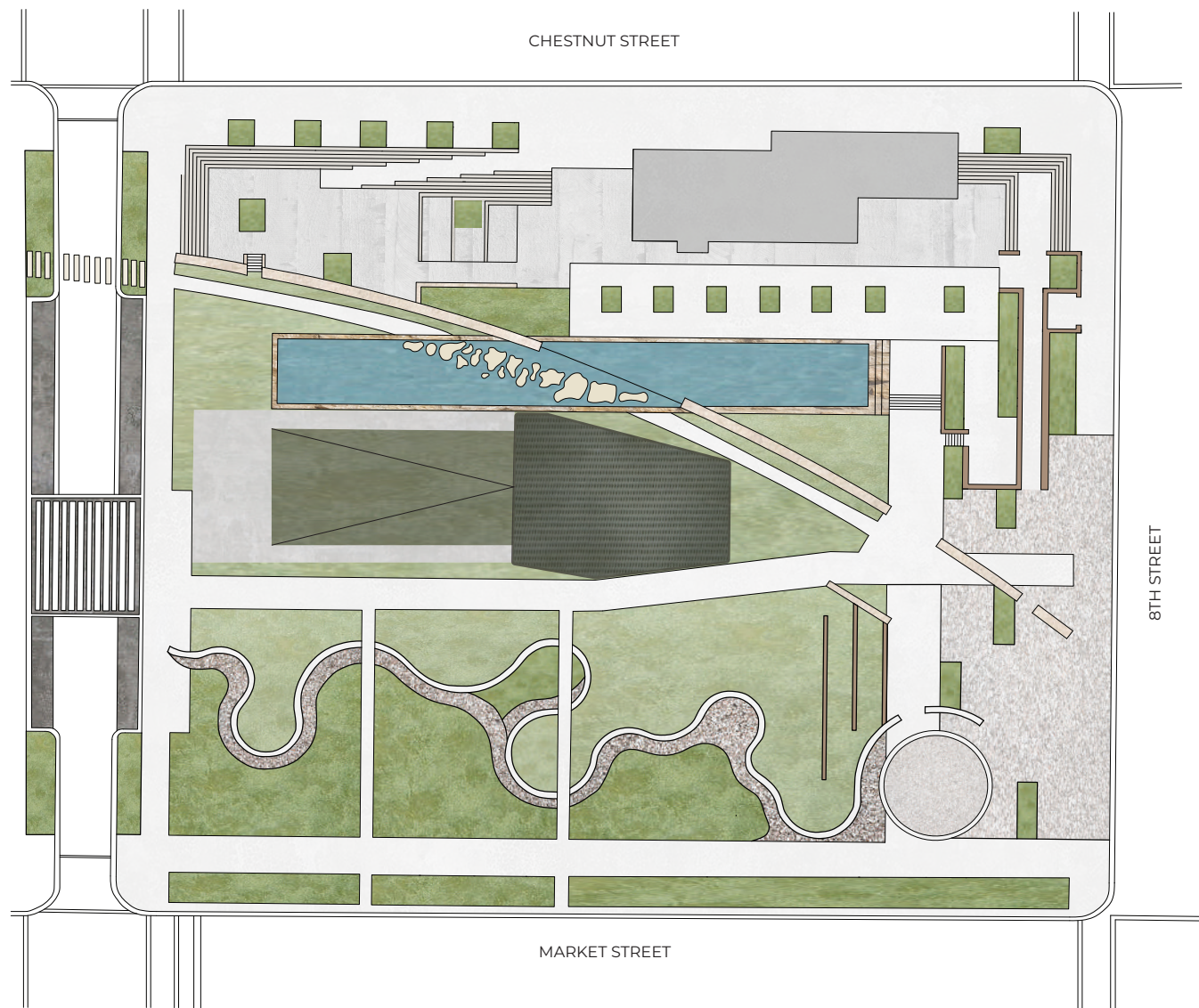
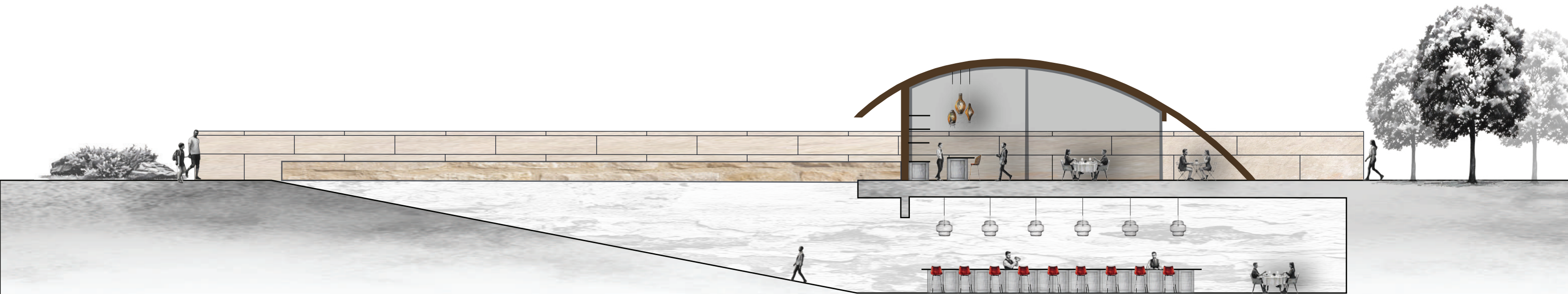
# SECTIONAL PERSPECTIVES

## VISUALIZING DELAY AND DISCOVERY

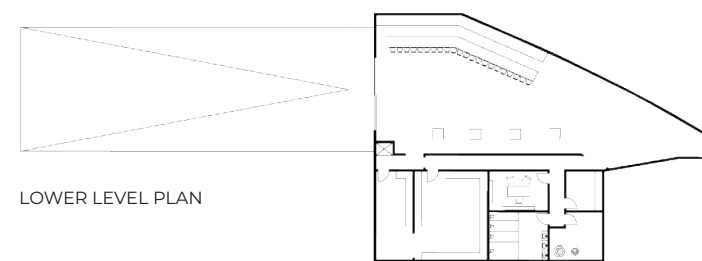
THE CHEESE CAVERN | ST. LOUIS, MISSOURI

04





GROUND LEVEL PLAN



LOWER LEVEL PLAN

"The Cheese Cavern" in St. Louis stands as a testament to architectural ingenuity, skillfully woven into the fabric of the city's vibrant parkland. Strategically positioned to exploit the playful curves and historical echoes of the St. Louis Arch, this two-story structure offers a visual and experiential journey that begins with its façade and culminates in its interior spaces. From the west, the approach reveals a grand ramp descending into the heart of the cheese shop and wine-tasting lounge, each space designed to enhance the sensory experience of discovery and surprise. On the eastern side, the building frames a view of a charming bar, nestled amongst lush greenery, creating a seamless integration with the natural environment and the lively atmosphere of the park.

This project employs architectural sections not only as a design tool but as a narrative medium to articulate the unfolding sequences within "The Cheese Cavern." The use of continual delay in the visitor's journey and the strategic framing of views are meticulously detailed in the section drawings, highlighting the project's core themes of discovery and engagement. Each section reveals layers of interaction between the architectural form and its users, showcasing how the structure guides and manipulates the viewer's experience from entry to core activity spaces. The Cheese Cavern thus becomes more than a building; it is an orchestration of views, paths, and experiences that surprise and delight, making it a unique addition to the cultural landscape of St. Louis.

# NAVIGATING FUTURE WATERS

A VISION FOR MARINE EXPLORATION

BLUE HORIZON MASTER PLAN | PUERTO RICO

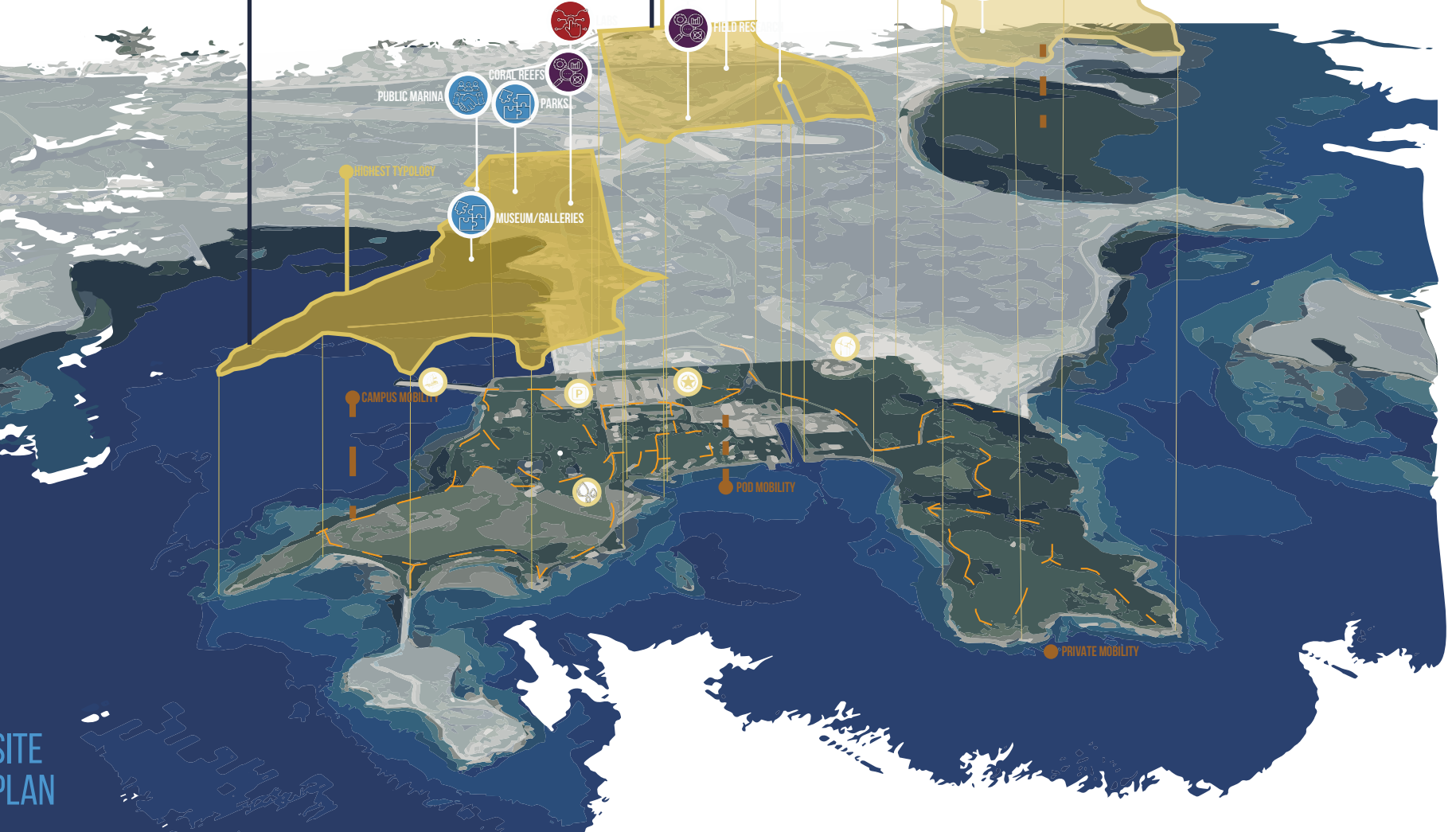
SWAMP SO



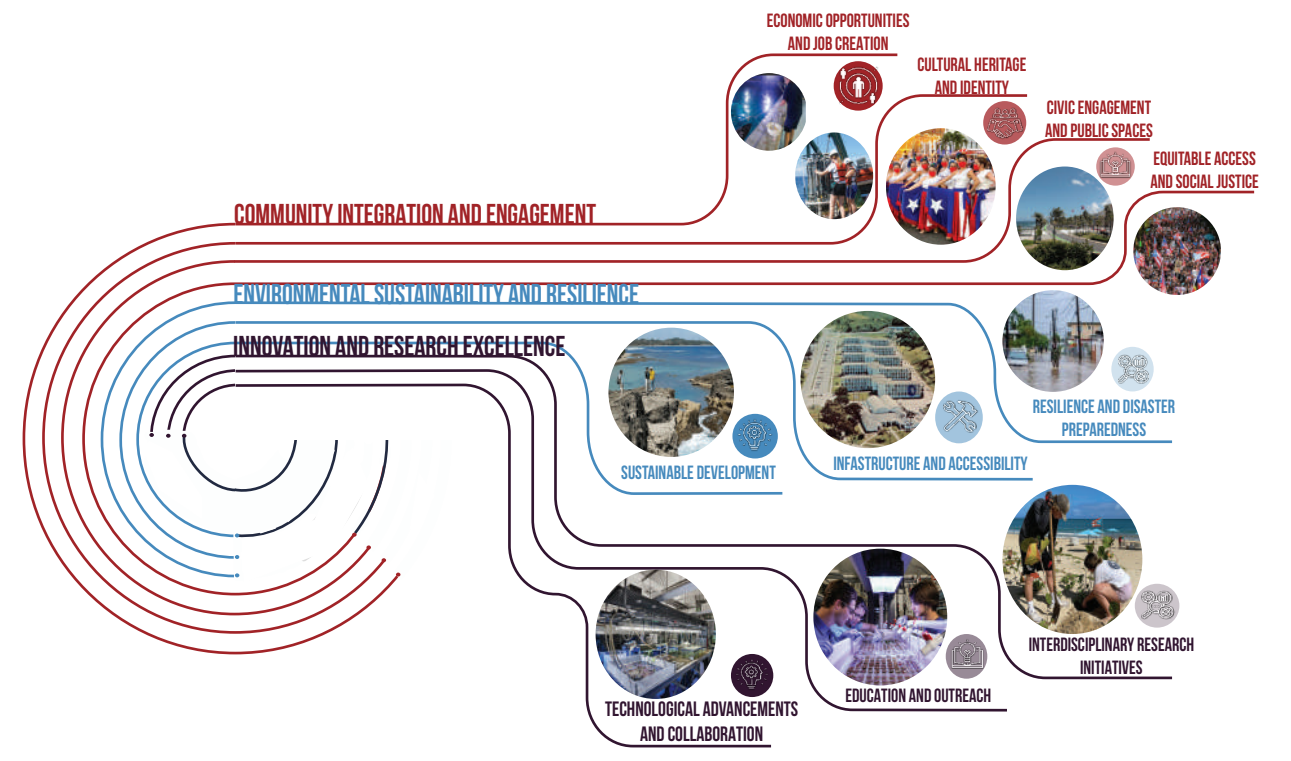
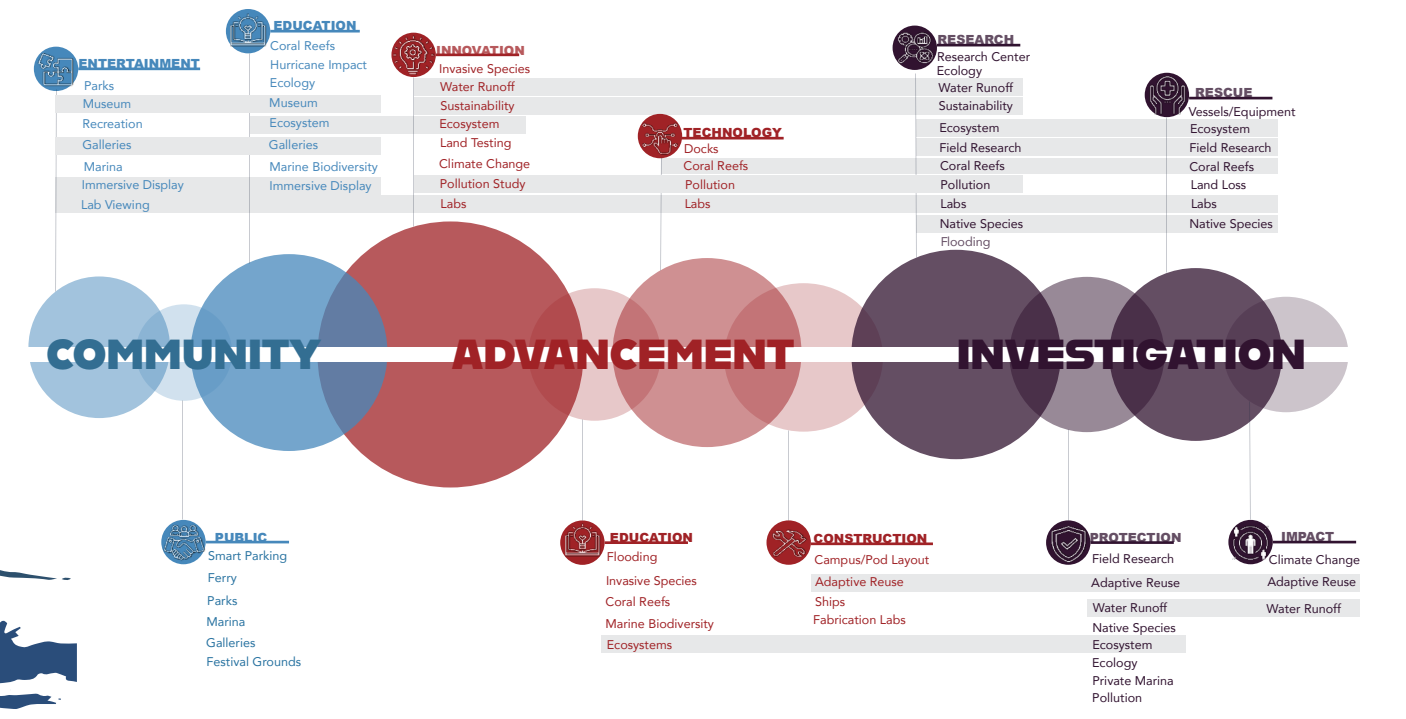
Blue Horizon Marine Innovation and Technology masterplan embodies a visionary approach to revitalizing a site brimming with untapped potential. Situated amidst lush vegetation and extensive open land, with pre-existing infrastructures primed for innovative reuse, the project positions itself as a pioneering force in marine technology and ecological research. Our architectural design leverages the site's natural and built environments to forge a dynamic ecosystem centered on exploration and discovery, integrating cutting-edge laboratories, interactive museums, experimental trial zones, and comprehensive fabrication facilities. This strategic utilization transforms the site into a vibrant hub for advanced studies and public education in marine life, promoting immersive experiences that connect visitors with the latest advancements in oceanic exploration.

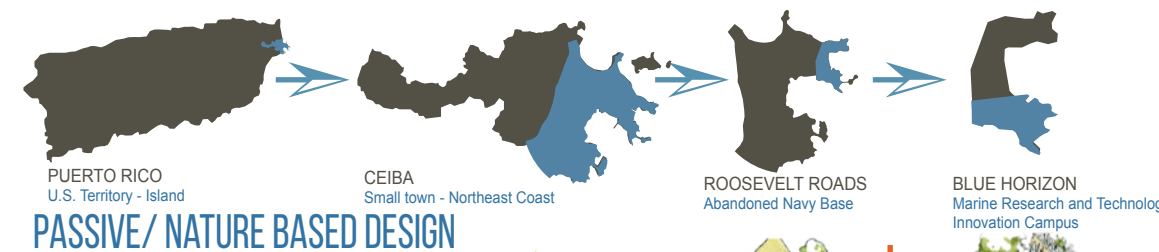
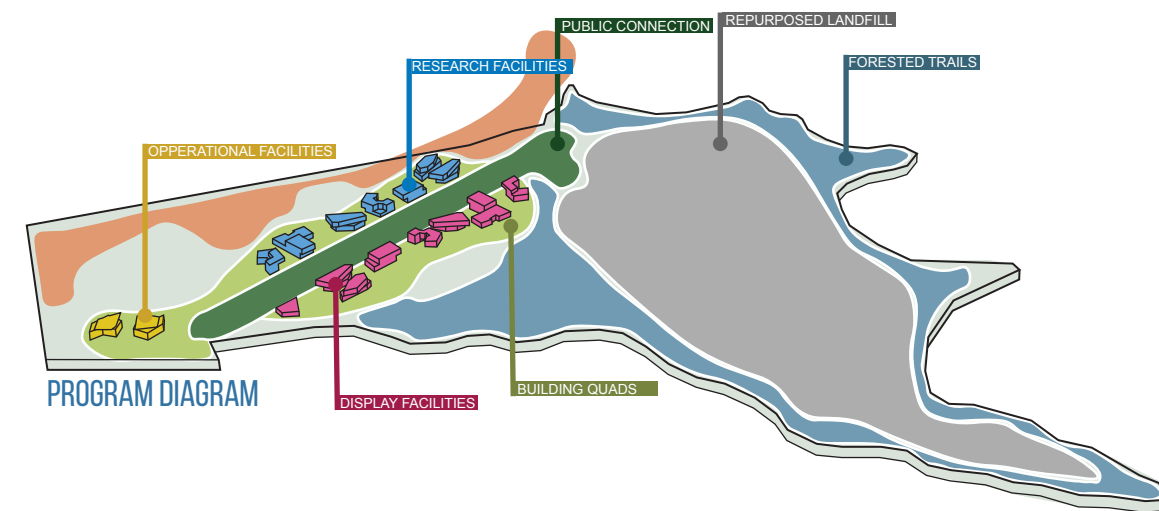
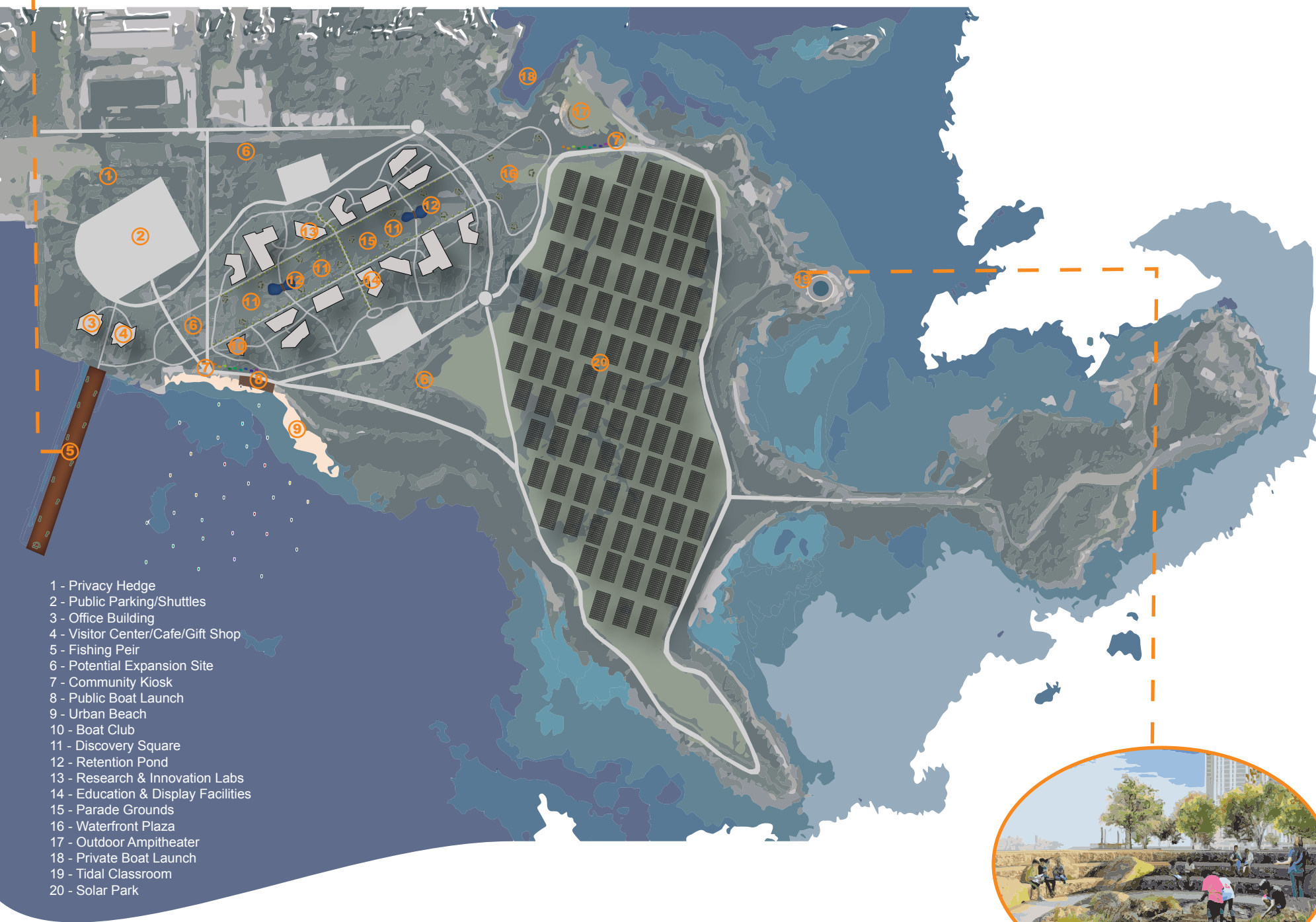


**TECHNOLOGY INNOVATION FACILITIES**



In crafting the Waterfront District within the Blue Horizon campus, the design strategy focuses on cultivating a thriving community of marine biologists and researchers dedicated to innovation. At the core of this district lies a strategically positioned campus quad, serving as a vital communal nexus that links educational and research facilities with public amenities, thereby enhancing collaboration and inspiring creativity among users. The inclusion of recreational features like fishing piers, boat launches, and a community kiosk, alongside a significant 140-acre solar park, exemplifies our commitment to sustainability and community engagement. Overall, the Blue Horizon project not only aims to push the boundaries of marine research and technology innovation but also strives to foster a sustainable and interconnected community, harmoniously blending educational, research, and recreational activities into a single, cohesive environment.





THANK YOU

DESTINYLGRAVES@GMAIL.COM | WWW.DESTINYGRAVES.COM | @DESTINYGRAVESSTUDIO

