

Destiny Graves

ARCHITECTURE STUDENT



TABLE OF CONTENTS

All studio and personal work starting from most recent

- 01** The Seneca
- 02** The Cheese Cavern
- 03** Creole Creamery
- 04** Swamp Social Pavilion
- 05** Pavilion Space Study
- 06** Dance Space Study
- 07** Continual Delay
- 08** Staircase Study
- 09** Space Within A Space
- 10** Clone Forearm
- 11** Scale Exploration
- 12** D.E.E. Statements



THE SENECA

Location: The Standard Hotel - Chelsea, New York

Seneca. A 9th-century settlement predominantly of African Americans was located in what we now call central park. The lost community inspired the idea of creating spaces that thrive on functionality and evolution. The seventeen stories, towered design creates urban spaces which form public hubs for fostering relationships. Connecting the structure to the Highline provides a missing element of connectivity to other necessary spaces such as affordable retail, community centers, gyms, and much more. To orient these spaces, intentionality is highlighted through the circulation and variety of indoor/outdoor public and private spaces. While the focus is emphasizing community health, the Seneca allows for growth of the community through well organized and tailored amenities. Designed with a specific team-created criteria:

FALL 2022

Evolution

Respect the surrounding structures by creating a form that allows for a variety of views.

Connectivity

Remove boundaries between public green spaces and structures. Allowing form to create movement and define indoor to outdoor spaces

Accessibility

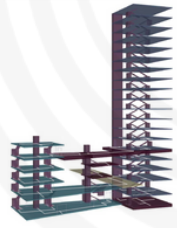
Allow for easy access to all public, semi, and private spaces including the Highline

Functionality

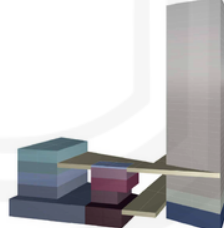
Focus on optimal usage and flexible spaces for any designation



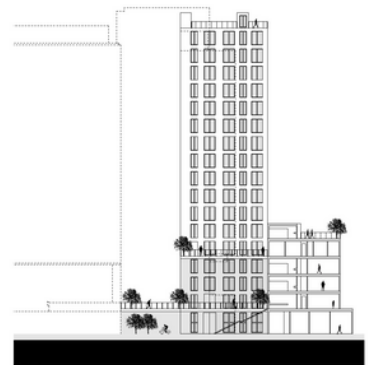
CIRCULATION DIAGRAM



PROGRAM DIAGRAM



- ☐ Gallery Off-Shop
- ☐ Lobby
- ☐ Event Space
- ☐ Restaurant
- ☐ Office
- ☐ Retail
- ☐ Retail Space
- ☐ Conference Room
- ☐ Info Center
- ☐ Bike Shop
- ☐ Coffee Shop
- ☐ Lobby
- ☐ Retail

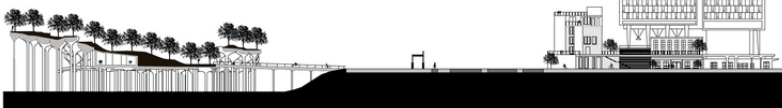


SCALE: 1/8" = 1'-0"

WALL SECTION ASSEMBLY

1. FINISHED HARDWOOD SLAB
2. CONCRETE FOOTING
3. DRYWALL
4. DRAINAGE PIPE
5. CAVITY INSULATION
6. PROTECTION BOARD
7. 3/4" FRONTLINE
8. ENGINEERED FLOOR ASSEMBLY
9. WOOD LAP SIDING
10. COMPRESSIVE GASKET
11. RUBBER SEALANT
12. EXOSITE FLASHING WITH WATER PROOF MEMBRANE
13. PLASTER BOARD FINISH
14. SINGLE PLY WOOD MEMBRANE
15. BRIDG INSULATION

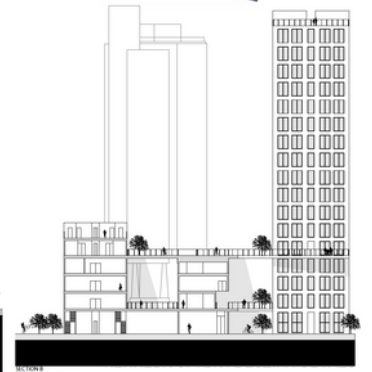
WALL SECTION SCALE: 3/4" = 1'-0"



SCALE: 1/2" = 1'-0"



SCALE: 1/2" = 1'-0"



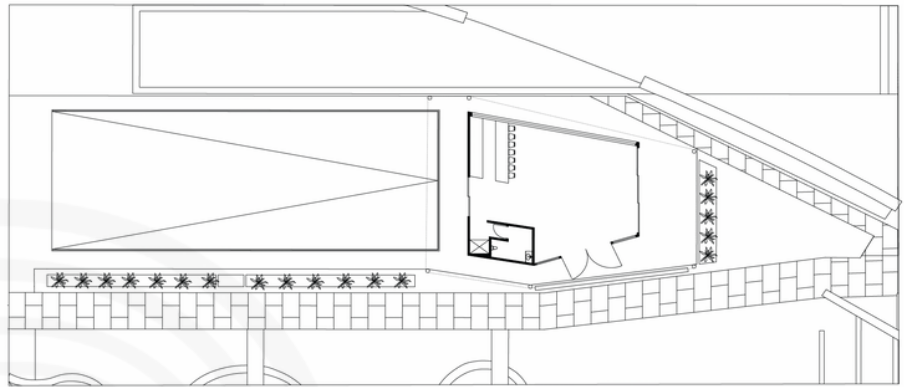
SCALE: 1/8" = 1'-0"

THE CHEESE CAVERN

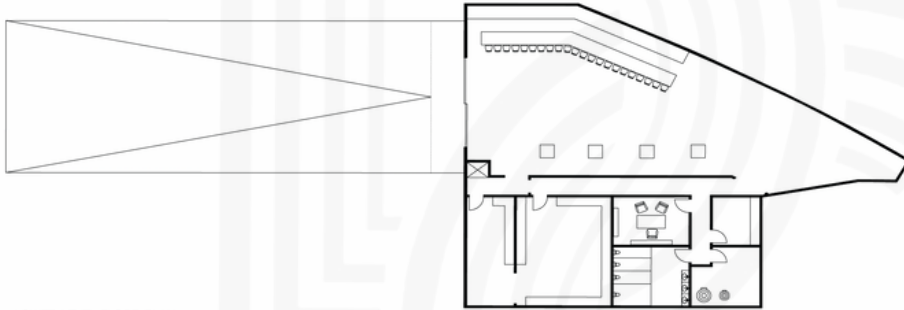
Location: City Garden - St.Louis, Missouri

Designing through constraints such as small sites pushed me to create The Cheese Cavern. A space filled with surprising moments. The design highlights the existing features and amplifies the atmosphere of unexpected delight. The overall form drew inspiration from the famous St. Louis Gateway Arch by mimicking the campus. Visitors entering from the east side are greeted by what seems to be a singular small, curved structure. Whereas visitors from the west side see a two-story facade that invites them into the lower level. Here you descend down the ramp to an underground world containing a bar, sales area, and back of house for receiving storage, and other necessities.

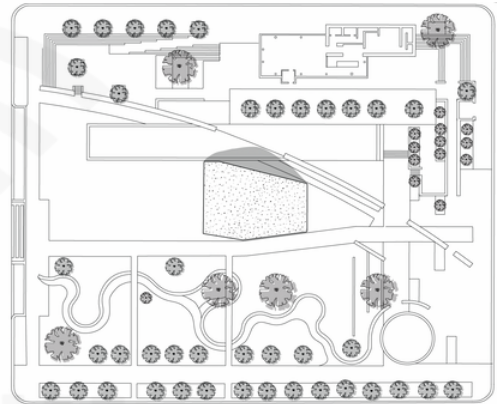
SPRING 2022



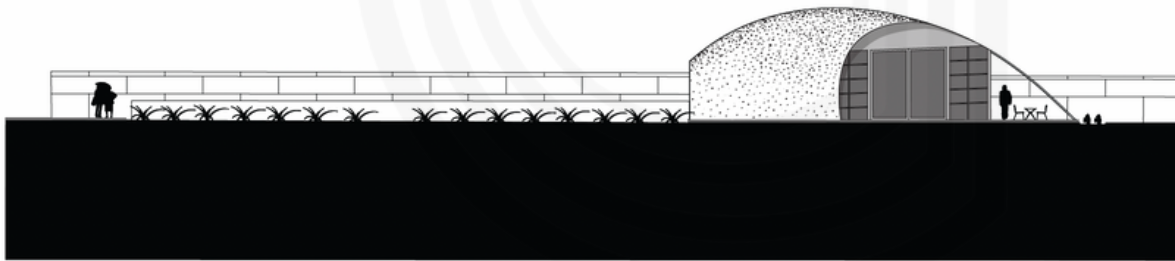
GROUND LEVEL FLOOR PLAN
SCALE: 1/8" = 1'-0"



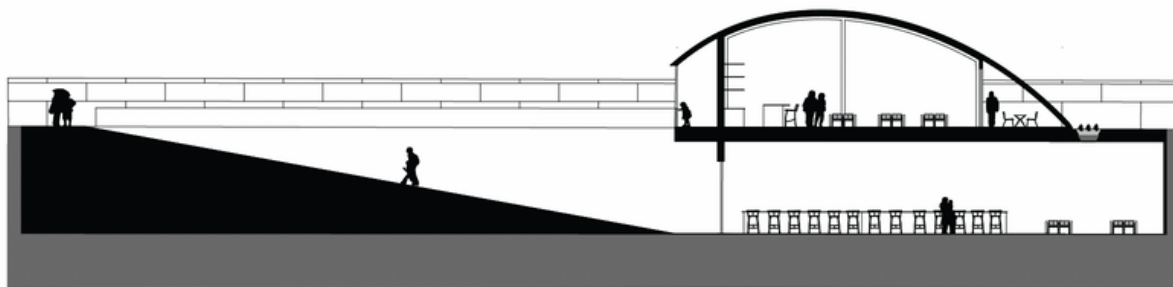
LOWER LEVEL FLOOR PLAN
SCALE: 1/8" = 1'-0"



SITE PLAN
SCALE: 1/16" = 1'-0"



LONGITUDINAL ELEVATION
SCALE: 1/8" = 1'-0"



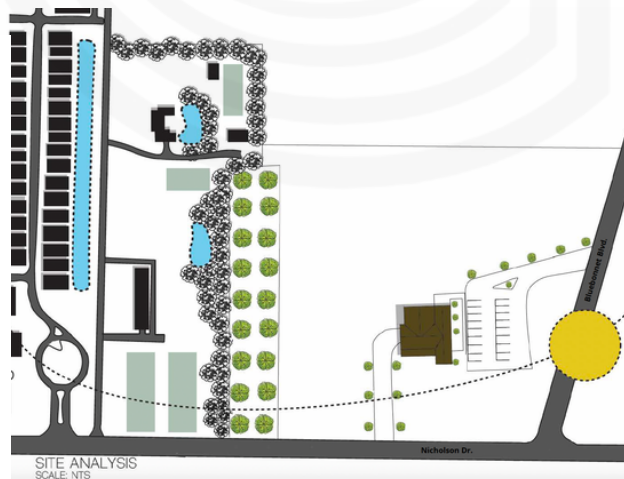
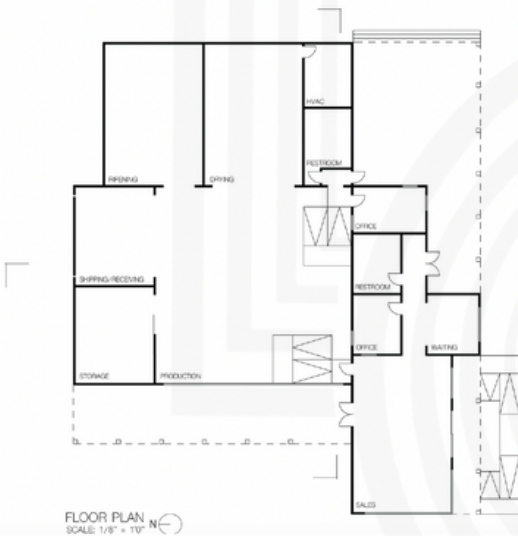
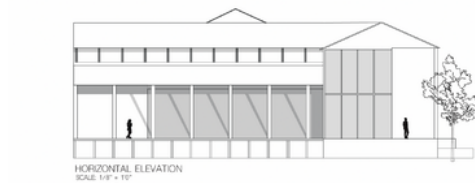
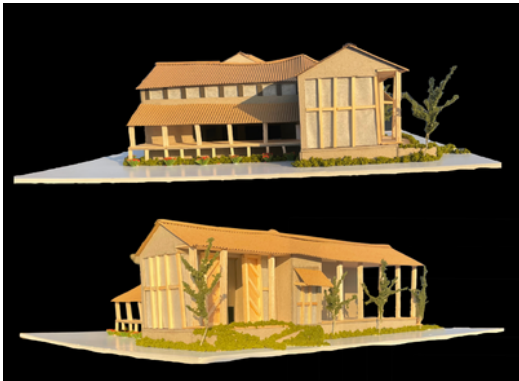
LONGITUDINAL SECTION
SCALE: 1/8" = 1'-0"

CREOLE CREAMERY

Location: Fullness Organic Farm - Baton Rouge, Louisiana

Continuing to understand scale, proportion, and space, we visited Fullness Farm and learned about its rich history, plans to expand the farm, and ideal landscaping layout. Considering their proposal and square footage restrictions, I decided to create The Creole Creamery, a cheese factory that produces 'souse or traditionally known in Louisiana as Hog's Head Cheese. The factory mimics its landscape and surroundings by following original southern architecture. This is specifically expressed through the porches and roof structures. Designed to create an experience for all visitors, not only on site but also connected to the neighboring communities.

SPRING 2022



SWAMP SOCIAL PAVILION

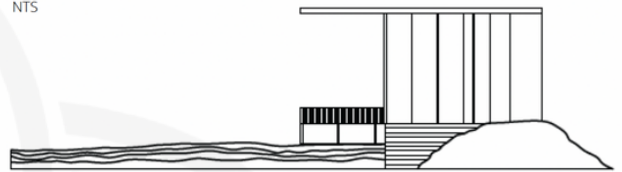
Location: The Water Campus - Baton Rouge, Louisiana

Through considering pavilion building methods, I was tasked with creating a commons area or open space along the Mississippi River in Baton Rouge. This project prompt was in collaboration with the Baton Roots Community farm which was created in response to the community's food desert. In response, I incorporated a step garden with natural draining and flood combative techniques into the outdoor terrace. The structure is inspired by one of the many Mississippi River sandbars. Coined, The Swamp Social Pavilion, mimics and mirrors every element and relationship between the river, delta, levee, and spillway system. The technical drawings include a floor plan, sections, elevation, and site plan.

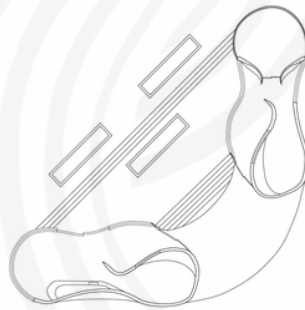
FALL 2021



SITE PLAN
NTS



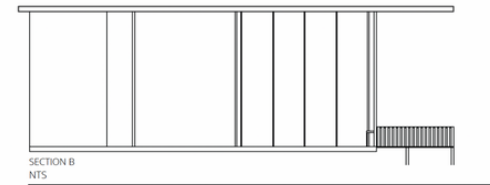
SITE SECTION C
NTS



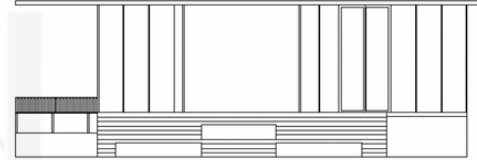
FLOORPLAN



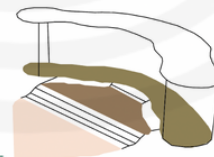
SECTION A



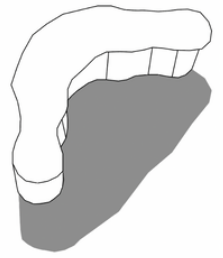
SECTION B
NTS



REAR ELEVATION
NTS



HIERARCHY

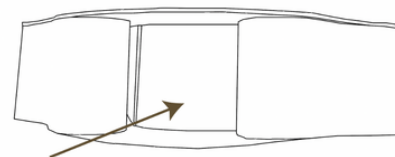


SHADOWING



Precedent Photo

Inspired by one of the many Mississippi River Sandbars, The Swamp Social Pavilion mimics and mirrors every aspect and relationship between the river, delta, levee, and spillway system.



THRESHOLD

OBSERVATION DECK

The added outdoor landscape was designed to amplify surrounding scenery and extend the experience to outdoors, giving direct access to the river below.

MATERIALS

The materials used here copy the same characteristics of the flowing sediment in the river. For example, porosity, permeability, roundness, sorting, etc.

PATIO

To emphasize the landscape, the Patio is located on the west wing, which creates a space where visitors can feel as though they are on the water or a part of the flowing river due to the cantilever platform and roofing.

WALL STRUCTURE

In response to the necessity of a private space, the Pavilion follows the curvature of the sandbar created by sediment.

THRESHOLD

As a response to the prompt, leaving the entrance open while closing off access to interior spaces forces visitors to move in one space. As well as mimic the flow/spillway of the river and levee system. Diverting the circulation at certain periods was an intentional design.

DRAINAGE

In a more literal way to represent the importance of the levee spillways was by adopting the concept of water diversion where gutters and pathways move rainwater to a specific area to nurture and enhance the surrounding landscape.

KITCHENETTE

In this feature on the south wing of the Pavilion amplifies the sense of relaxation, rejuvenation, and serenity by allowing visitors to enjoy refreshments and the space.

FLOORPLAN

Mimicking the landscape of the river, levee and site, was important to highlight the curvature.

Replicating and studying different forms of pavilion structures around the world, we focused on shelter, exhibit, and event elements. Through the diagrammatic process we were able to then easily make these structures come to life through modeling.

FALL 2021

YEOSU EXPO HYUNDAI MOTRO GROUP PAVILION

UNSAKDONG ARCHITECTS
2012



EXHIBIT

SPACE
THE STRUCTURE PROVIDES LARGE MULTI-PURPOSE SPACES

INTERACTION
SPACES ARE BUILT WITH ENGAGING FEATURES

EDUCATION
EXPERIENCE OF INFORMATIONAL WALK THROUGH

FORM

SCULPTURAL ARCHITECTURE IS REALIZED BY CONNECTING THREE DIMENSIONAL FRAMES WHICH ARE CONSTRUCTED TO BE CONTRASTING. THE LINK CONNECTS THE CONFLICTING CORPORATE IMAGES SUCH AS LOGICAL REASON AND EMOTION, ART AND TECHNOLOGY, PAST AND FUTURE, CHANGES AND ACCUMULATION, AND SIMPLICITY AND DIVERSITY.

EXHIBITION

THE EMPTY EXHIBITION SPACES SUCH AS INTERIOR ATRIUM BECAME VARIOUS CHANGING SPACES THROUGH CUBICAL MATRIX BOX. IT IS ACHIEVED THROUGH THE WALL OF SPECTACLE COMPOSED OF VARIOUS CUBES WHICH MOVES BY MECHANISM.

ARCH 2001-3 | PAVILION/SPACE | DESTINY GRAVES

THORTON COMMUNITY PAVILION

MORRIS BAY MARTIN OLLMANN ARCHITECTS
2013



GATHER

ENTERTAINMENT
THE STRUCTURE PROVIDES SPACE FOR EVENTS

COMMUNITY
SPACES ARE SITED FOR COMMUNITY GATHERINGS

SAFETY
THE PAVILION IS COVERED AND PROVIDES PRIVACY

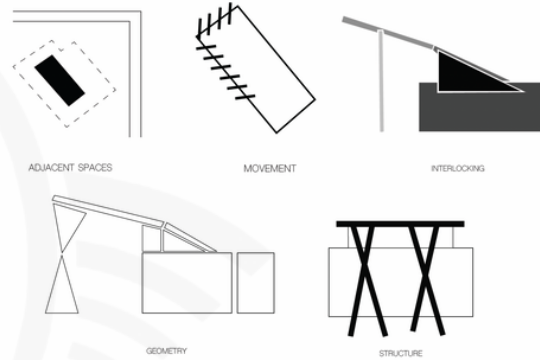
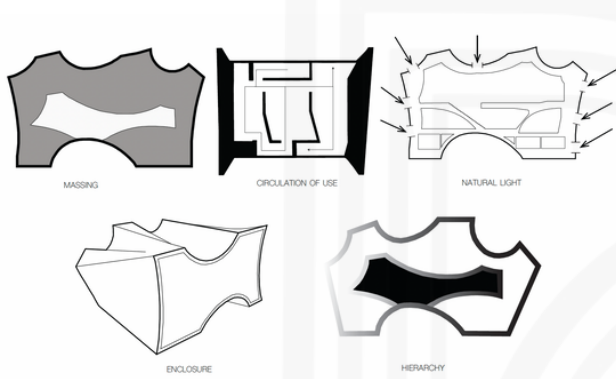
STRUCTURE

THE DESIGN IS BASED ON CLASSIC PAVILION ARCHITECTURE. A SINGLE-STORY STRUCTURE WITH LARGE OPEN PLAN AREAS MAXIMIZING ITS OPEN SPACE OUTLOOK. THE TYPICAL PAVILION TYPOLOGY INCLUDES LARGE GLAZED FACADES TO THE MAIN SPACE LEADING OUT ONTO A TERRACE AND INTO THE SURROUNDING LANDSCAPE.

MATERIALS

THESE SCREENS ARE MADE OF ALUMINUM. THE ADVANTAGE OF USING THIS MATERIAL IS THAT IT OFFERS LONGEVITY AS OPPOSED TO GALVANIZED STEEL. ALSO USING STAINLESS STEEL FRINGS ENSURES THAT THERE IS NO RUST AND A POWDER COAT AS IF A PAINTING PROCESS ORIGINALLY FORMULATED FOR COATING ALUMINUM. THE FACADE FEATURES BROOKLYN LUGS BRAHMAN BRICK, WHICH FEATURES AN OFFSET DESIGN.

ARCH 2001-3 | PAVILION/SPACE | DESTINY GRAVES



ROPE PAVILION

KEVIN ERICKSON
2012



SHELTER

TEMPERATURE
THE STRONG SHELL BLOCKS HIGH WINTER WINDS

PROTECTION
THE ROPE SKIN FORMS A SPACE TO FEEL SECURE/SAFE

LIGHTING
AS THE WINDS DOWN THE PAVILION PROVIDES LIGHTING

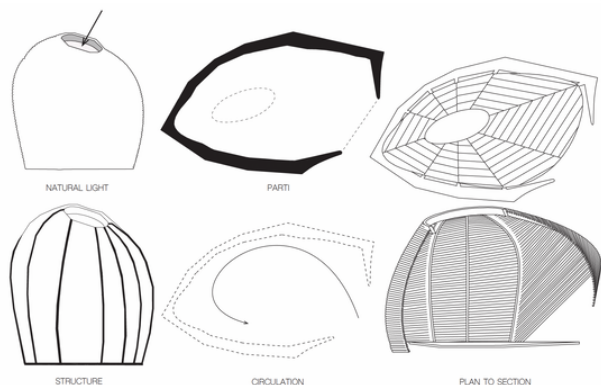
FORM

THE HUT'S DOME-LIKE FORM IS OPTIMIZED FOR HEAT RETENTION, SPRUICATING ONLY FOR AN ENTRY THRESHOLD AND OCELLUS TO THE SKY ABOVE.

MATERIALS

THE WOOD INTERIOR CREATES A SENSE OF WARMTH THROUGH COLOR AND TEXTURE AND ITS MULTILAYERED ROPE EXTERIOR COLLECTS SNOW, FURTHER EMBEDDING IT WITHIN THE SITE.

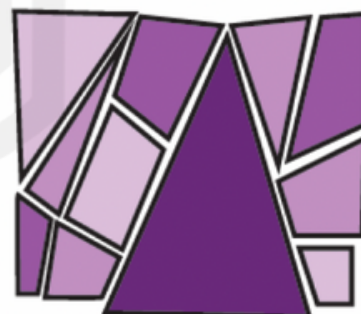
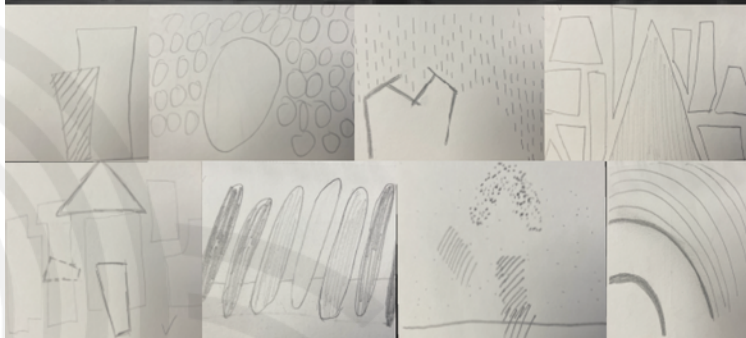
ARCH 2001-3 | PAVILION/SPACE | DESTINY GRAVES



DANCE SPACE STUDY

Using the video snapshots, the task was to find unique ways to represent movement, sequence, symmetry, rhythm, unity, and hierarchy throughout the dance. Quick sketches of these ideas further developed into diagrams inspired by the same techniques.

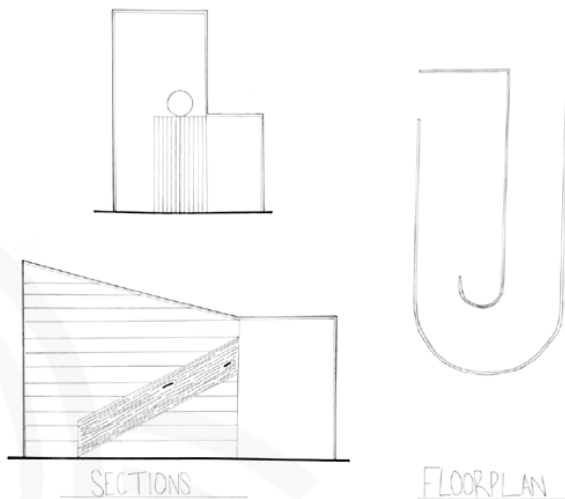
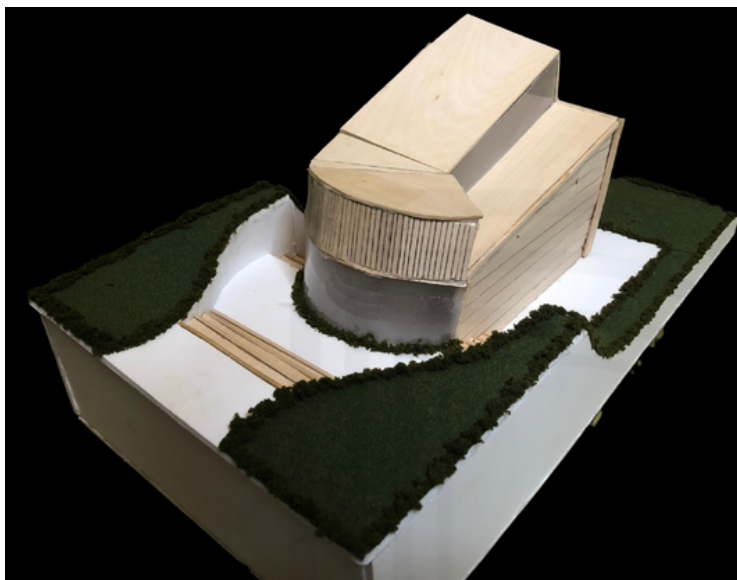
FALL 2021



CONTINUAL DELAY

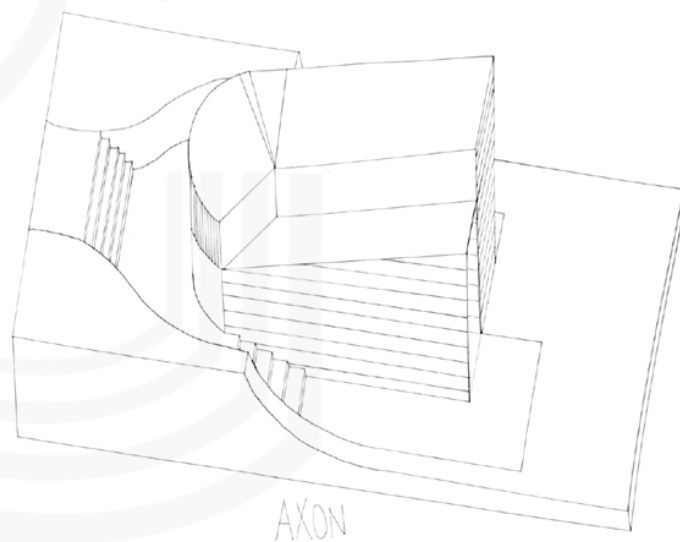
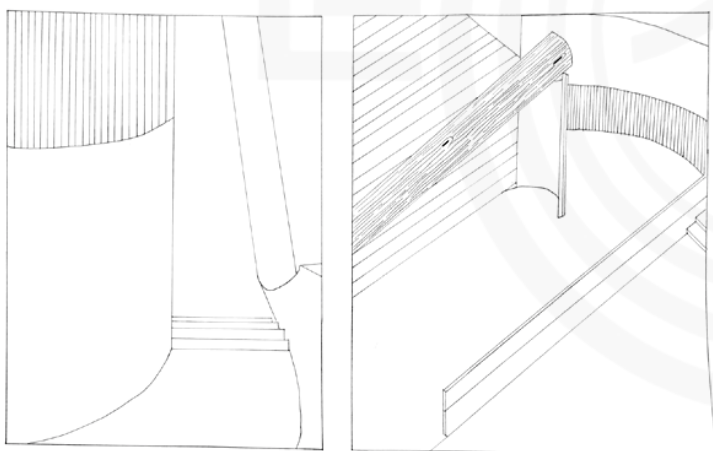
With a focus on the coexistence of space and interactions within space, the task was to create a structure that exhibits a prized log and forces different frames of perspective as you enter. While also focusing on circulation throughout the site. To communicate these ideas there are axonometric, section, floorplan, and perspective hand drawings.

SPRING 2021



CIRCULATION

LOG PERSPECTIVE

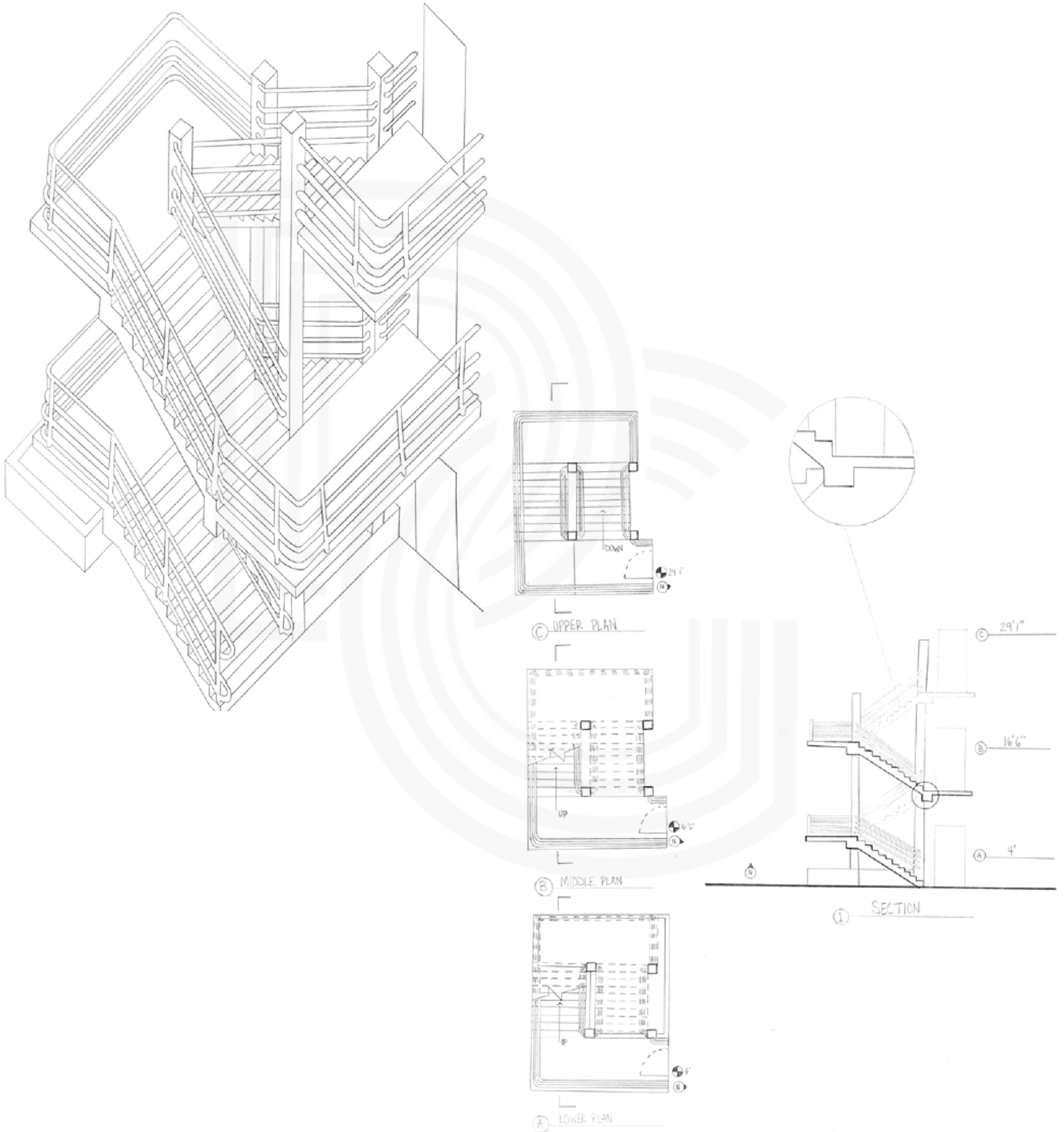


AXON

STAIRCASE STUDY

Continuing to perfect scale, proportion, and perspective techniques we created an axonometric, plan, and section drawings of a staircase on campus. We were challenged to retrieve our own measurements and practice the correct techniques for stair details.

SPRING 2021

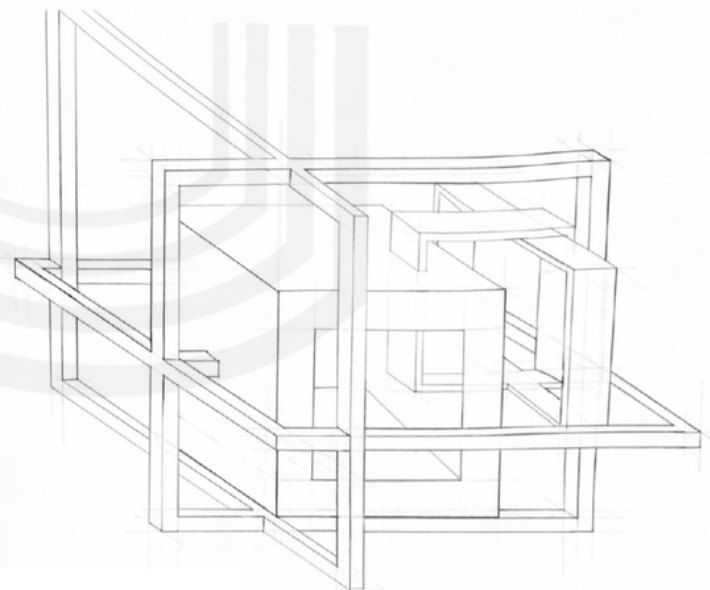
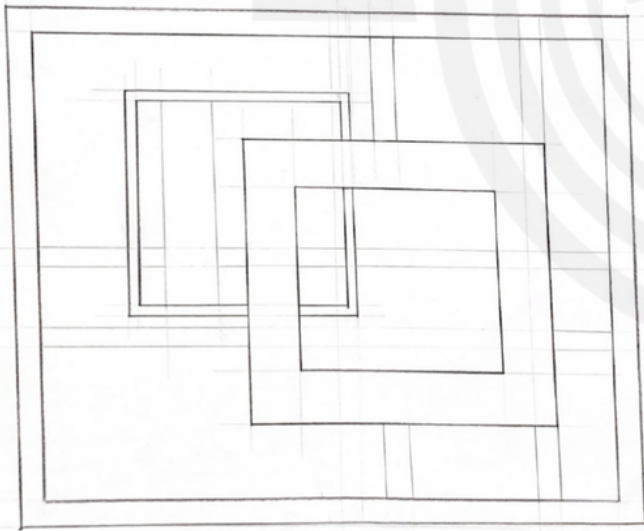
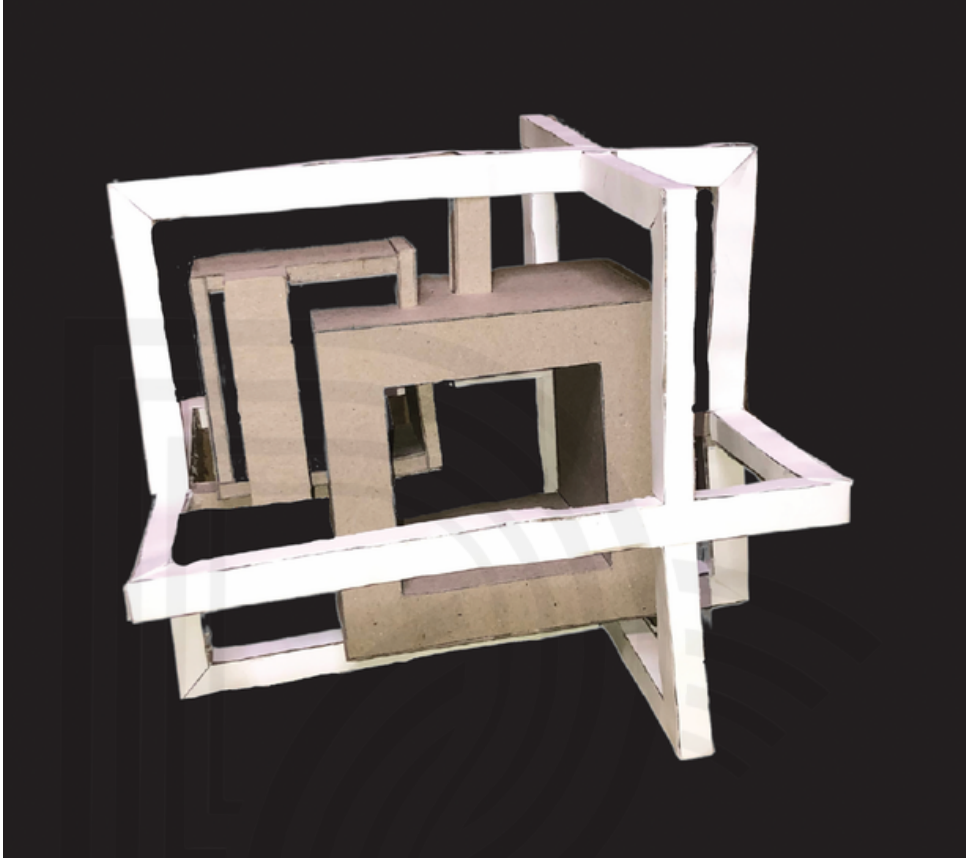


SPACE WITHIN A SPACE

09

Using wrapping and subtracting techniques cubes are formulated within the negative space. Color differentiates the surrounding cube from the objective cubes inside. Furthermore, depicting the form in axonometric and section hand drawings helps visualize the cubic shape within.

SPRING 2021



CLONE FOREARM

10

This assignment challenged us to capture our arm in any position and recreate that meaningful gesture as a life-size cardboard model. I learned how to visualize the skeleton of the arm and use 2D shapes to create a 3D form.

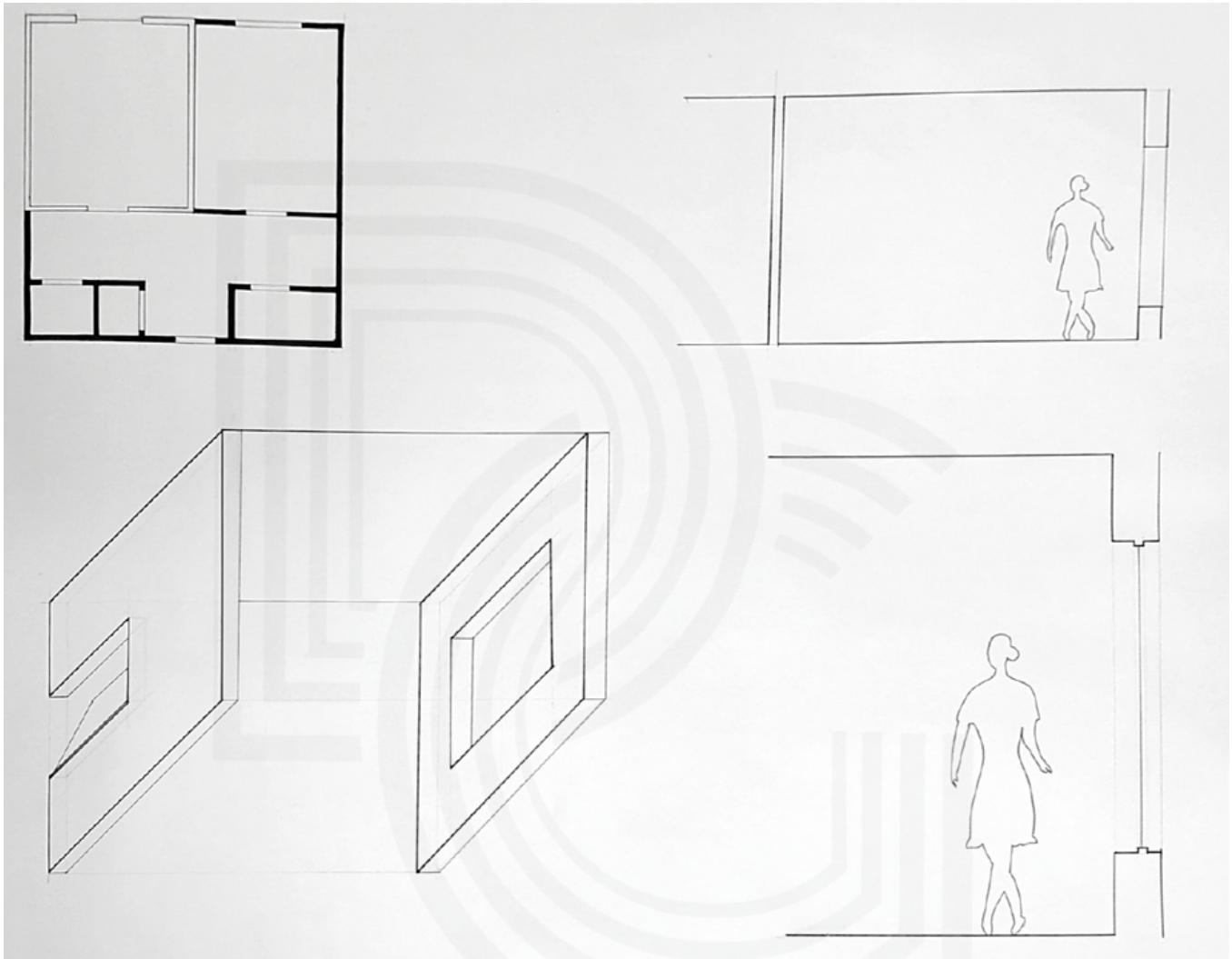
FALL 2020



SCALE EXPLORATION

To get a better understanding of scale, proportion, and visualization we practiced with 1/8 and 1/4 scales. Hand drawing our dorm room floor plan, sections, and perspective section aided in understanding fundamental skills and techniques.

FALL 2020



In a weekly upload, I was tasked with exploring notable structures around the world. Doing so by quoting reliable sources to formulate a statement that details the structure's unique design Decision, specific building Element, and the Experience created by that element. The statement is occupied by a sketch of the structure.

FALL 2020



WWW.Architectural-Review.com
CHRISTCHURCH TRANSITIONAL CATHEDRAL
SHIGEKI BAN
2013

LEXICON:

"His idea was for a simple, functional structure made largely from prefabricated concrete and steel beams that fit together in the 'simplest possible to build'."

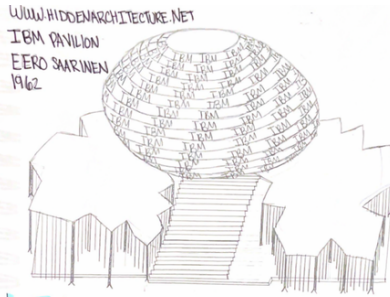
↳ Prefabricated concrete as building material, etc. to enable quick & cheap construction

D.E.E.:

"The A-frame structure made of prefabricated concrete forms the temple of New Zealand's post-war reconstruction, and has become a landmark in New Zealand's architectural history."

- A-frame structure as unique design decision
- Cathedral that "speaks" building element
- "Place" - the experience of the building element

D.E.E. STATEMENT 9.16



WWW.HIDDENARCHITECTURE.NET
IEM PAVILION
EERO SAARINEN
1962

LEXICON:

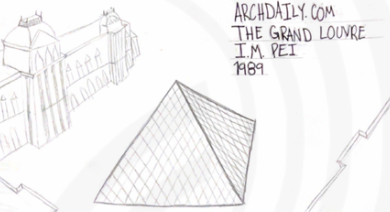
"The collaboration between Oshiki and Eero Saarinen with the most successful American architects of their generation created a series of exciting projects that dealt with the exigencies of the American landscape, the advanced materials and the advanced use of images both a visual image."

↳ Using for a very short time

D.E.E.:

"The egg like structure made of white tile draws visitors eyes throughout the space"

- "Egg like..." Design Decision
- "White Tile" Building Element
- "Draws visitors eyes" Experience



ARCHDAILY.COM
THE GRAND LOUVRE
I.M. PEI
1989

LEXICON:

"The scale of the large pyramid which is designed to the same reflection of the Grand Pyramid of Giza does not detract from the historical value of the program rather the juxtaposition of the modern structure and the French Renaissance architectural style on the museum's main courtyard effect that enhances each of the design's details and beauty."

↳ The use of two types, one can or piece size together with contrasting effect

D.E.E.:

"The glass pyramid structure, highlights and enhances some of the world's greatest artworks."

- "Pyramid" - design decision
- "Glass" - Building element
- "Highlight & enhance" - Experience



THE PRITZER PRIZE
SWISS RE HEADQUARTERS
NORMAN FOSTER
2004

LEXICON:

"Foster saw the building's aerodynamic form as encouraging the wind to flow around to flow around its facades rather than being as forced downward to the ground level."

↳ Having a shape which reduces the drag from air resistance

D.E.E.:

"The spiral cylinder building welcomes visitors with curiosity through the large glass and metal details"

- "Spiral Cylinder" - Design Decision
- "Glass and metal" - Building Element
- "Welcomes... Curiosity" - Experience



WWW.ARCHIVES.COM
THE ALVARO AALTO HOUSE
ALVARO AALTO
1936

LEXICON:

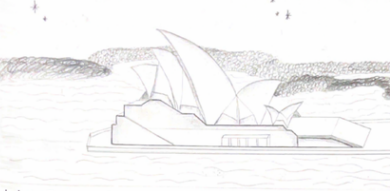
"Several particularly thought fulness from a glimpse of the resident couple's life and their family and highlight the interesting use of long and short corridors."

↳ In a way that shows great attention to details thoroughly

D.E.E.:

"The wooden and concrete home, derived from the Nordic Classicism style, exemplifies ideal uses of space with a sense of productivity."

- "Nordic Classicism style" - Design Decision
- "Wooden and concrete..." - Element
- "...exemplifies ideal uses of space with a sense of... Experience Productivity"



WWW.DICTIONARYOFSYDNEY.ORG
SYDNEY OPERA HOUSE
JØRGN UTZON
1959

LEXICON:

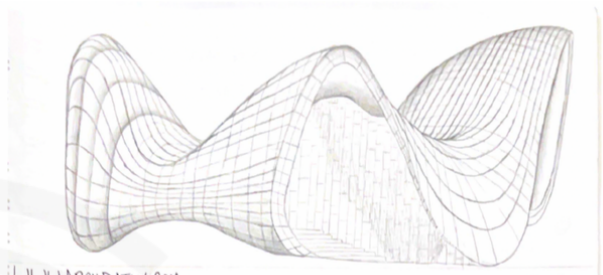
"Notre was his primary inspiration and it was a study of Sydney's geographical maps that gave him his notion of sails and evoking that for the Opera House."

↳ A device, action or opening through, typically one creating a degree of risk, that is available to gain an advantage

D.E.E.:

"The white concrete roofs, welcome visitors as they enter the large openings, bringing a sense of place and relaxation while overlooking the water."

- "Peeled... roofs" - Design Decision
- "... Concrete roofs" - Building Element
- "Welcoming... Peace, and relaxation" - Experience



WWW.ARCHDAILY.COM
HEYDAR ALIYEV CULTURAL CENTER
ZAHA HADID
2013

LEXICON:

"Elaborate formations such as undulations, perforations, folds, and reflections modify this Plaza surface into an architectural landscape that performs a multitude of functions: welcoming, embracing, and directing visitors through different levels of the interior."

↳ A smoothly rising and falling form, outline or movement

↳ The division of something into two branches or parts.

D.E.E.:

"The unique undulation formations make the glass fiber reinforced concrete structure, a open and productive work space"

- "Undulation formation" - unique Design Decision
- "Glass fiber reinforced concrete" - specific building Element
- "Open and Productive work space" - the Experience of the building Element

D.E.E. STATEMENT 9.23