

SPABEAUTYMD IN KINGSGATE PLAZA
14306 124th Ave NE, Kirkland WA 98034
(800) 990 7924 Fax: (888) 418 7997

FREEWAY DIRECTIONS FROM I-405 NORTH AND SOUTH

Your evaluation is at Dr. Slutsky's Office in SpaBeautyMD.

You may **Google "Sno-King Arena in Kirkland"** for more detailed
Directions from your location.

FROM I-405 HEADING NORTH

- Take **Exit 22** from I-405 N **toward NE 160th St.**
- Turn **Right** onto **NE 160th St.** (this is a **School Zone** with speed limits of **20 MPH when in session**)
- Proceed for about 0.5 miles until you reach **124th Ave NE.**
- Turn **Right onto 124th Ave NE** and continue for about 1 mile until you **pass NE 144th Street**
- Take the **first Left after NE 144th St** into **Kingsgate Plaza**
- **Pass "Amy Nails"** and the **"Hello Banh Mi"** on Right and you will arrive at **SpaBeautyMD**

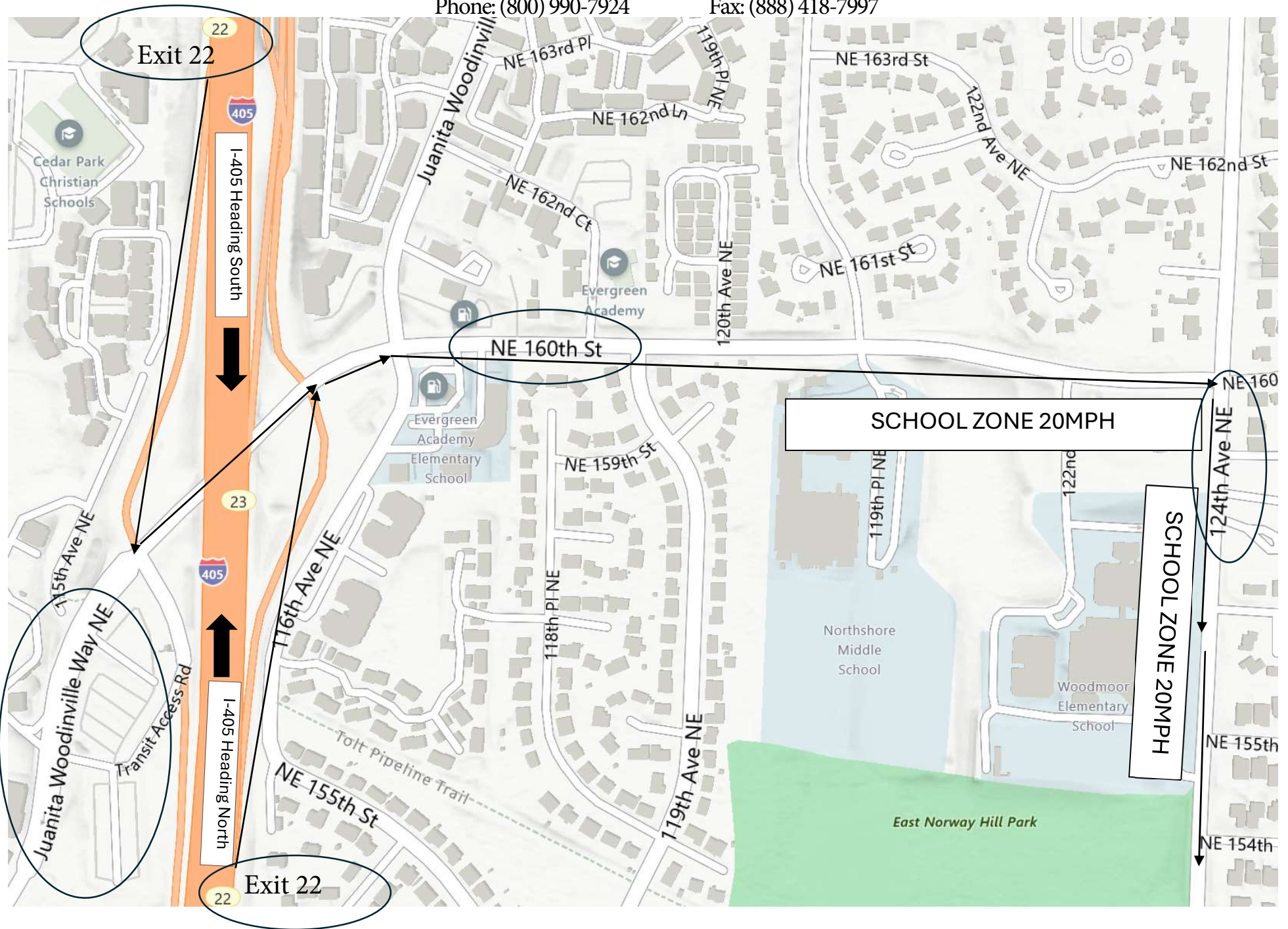
FROM I-405 HEADING SOUTH

- Take **Exit 22** from I-405 S
- Turn **Left** onto **Juanita Woodinville Way NE** and continue to follow **NE 160th St** for 0.7 miles until you reach **124th Ave NE.**
- NE 160th St. is a **School Zone** with speed limits of **20 MPH when in session**
- Turn **Right onto 124th Ave NE** and continue for about 1 mile until you **pass NE 144th Street**
- Take the **first Left after NE 144th St** into **Kingsgate Plaza**
- **Pass "Amy Nails"** and the **"Hello Banh Mi"** on Right and you will arrive at **SpaBeautyMD**

Dr. Morley Slutsky: In SpaBeautyMD at Kings Gate Plaza: 14306 124th Ave NE, Kirkland WA 98034

Phone: (800) 990-7924

Fax: (888) 418-7997



Dr. Morley Slutsky: In SpaBeautyMD at Kings Gate Plaza : 14306 124th Ave NE, Kirkland WA 98034
Phone: (800) 990-7924 Fax: (888) 418-7997



DR. MORLEY SLUTSKY
GENERAL OFFICE POLICIES
Office: (800) 990 7924 (Fax): (888) 418-7997
www.ratingexams.com

GENERAL OFFICE POLICIES

Dear Patients,

Please be aware of Dr. Slutsky's Policies (below)

A. **Face Covering** is optional. It is not required.

B. In all but **Rare** circumstances (which must be preapproved by Dr. Slutsky), only the patient is allowed into the appointment with Doctor. But there is a waiting area for another person to sit until the exam is complete.

C. Maps, Directions, Contact information, Policies may be obtained at www.ratingexam.com.

D. **No Guns** are allowed in Dr. Slutsky's office.

E. **No Animals are allowed** in Dr. Slutsky's office. The only exception is a **Certified Service Animals** however you must be preapproved by Dr. Slutsky.

F. **Small Children, Babies who are not able to sit quietly on their own** may not be brought into my office for the appointment as this may prevent us for carrying out the evaluation.

Call (800) 990 7924 if you have questions.

DR. MORLEY SLUTSKY
GENERAL OFFICE POLICIES
Office: (800) 990 7924 (Fax): (888) 418-7997
www.hearexams.com

POLICIES-FLU AND OTHER RESPIRATORY ILLNESS

(INCLUDING COVID)

We ask that individuals who have the flu and other respiratory illnesses stay home when they are sick instead of attending the appointment. This will help prevent the doctor and other patients from contracting the illness.

Please call our office as soon as possible at (800) 990 7924 to cancel the appointment.

Individuals may reschedule the appointment once they are feeling better and have been without a fever for 24 hours.