

Winton Community and Aged Care Services Inc.

Jessamine Place

Central to the success of the
Winton Wellness Network.



Winton's Voice for Community and Aged Care Services

Agenda

Our commitment

Our journey so far

A sustainable precinct for the future

Stakeholder engagement and support

Forward together



Our commitment

Ageing in the Outback. Working together for Winton.



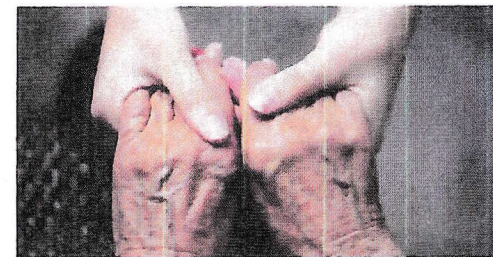
A sustainable precinct for the future

Supported accommodation to meet the current and future needs and aspirations of our community. And a strong, sustainable workforce to deliver high quality care.



Fit for purpose design and development

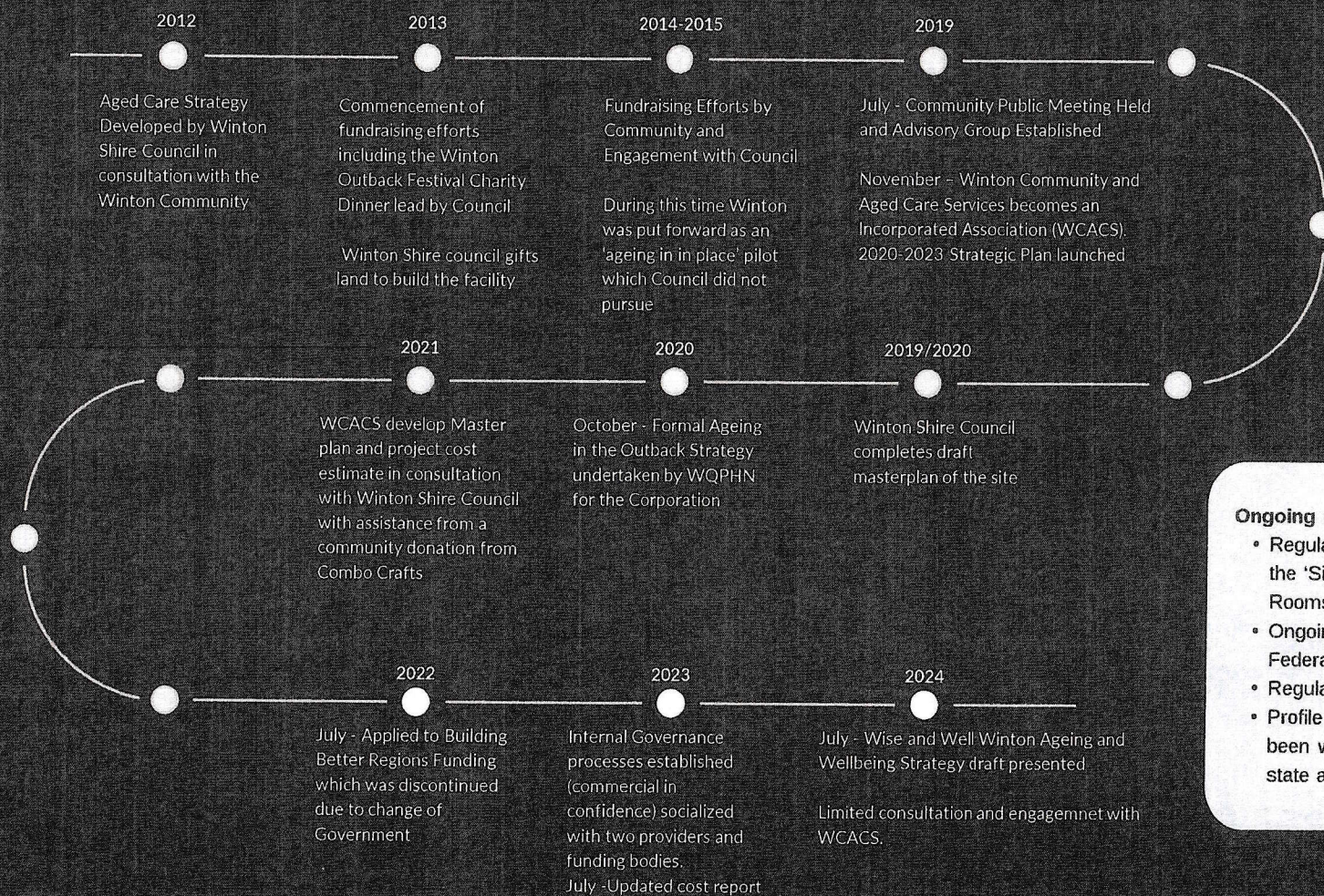
A safe, secure and purpose-built facility informed by aged care and dementia best practice, experience and evidence of what works in rural and remote communities.



Co-designed with and for the Winton community

A genuine commitment to engage and actively contribute to decisions and actions in an open, honest and inclusive environment.

OUR SHARED 10-YEAR JOURNEY AND COMMUNITY PARTNERSHIP

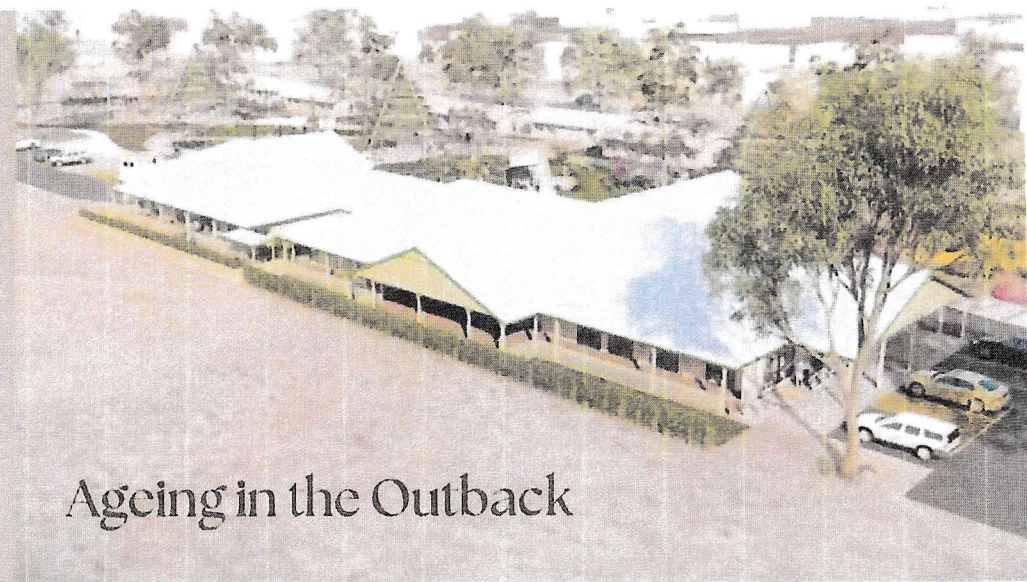


Ongoing activities

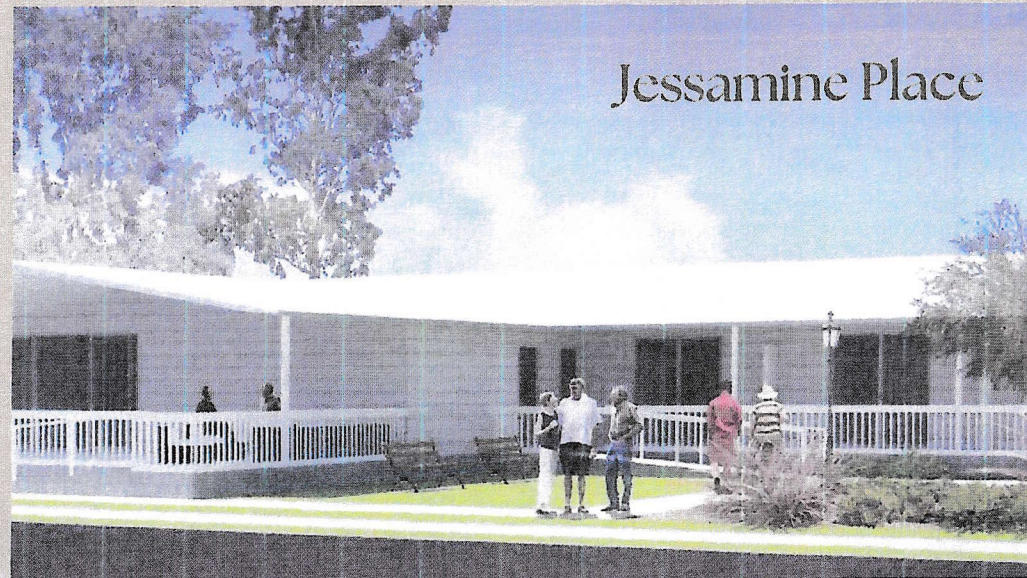
- Regular monthly meetings held at the 'Sixties and Better Meeting Rooms' in Winton – well attended
- Ongoing conversations with State & Federal Government for funding
- Regular fundraising activities
- Profile of Ageing in the Outback has been well articulated at a local, state and federal government level

A SUSTAINABLE PRECINCT FOR THE FUTURE

Ageing in the Outback endorses a sustainable, precinct-based approach informed by community needs and priorities. Supported by a robust business case and operational strategy.



Ageing in the Outback



Jessamine Place

Limitations of Wise & Well in Winton model

Lack of community ownership

There is strong existing ownership and investment in Winton's Ageing in the Outback strategy, built over several years.

Lack of stakeholder engagement

Wise in Winton not recognised or embraced by the majority of the community. Limited awareness and support at state and federal levels.

Safety and security risk

Detached living units not a safe or viable option for staff or residents. Current plans demonstrate limited understanding of operational risks and considerations.

Unnecesary duplication of effort

Wise and Well in Winton proposed Aged Care Group creates duplication of the group that is already working with demonstrated community support and sustainability.

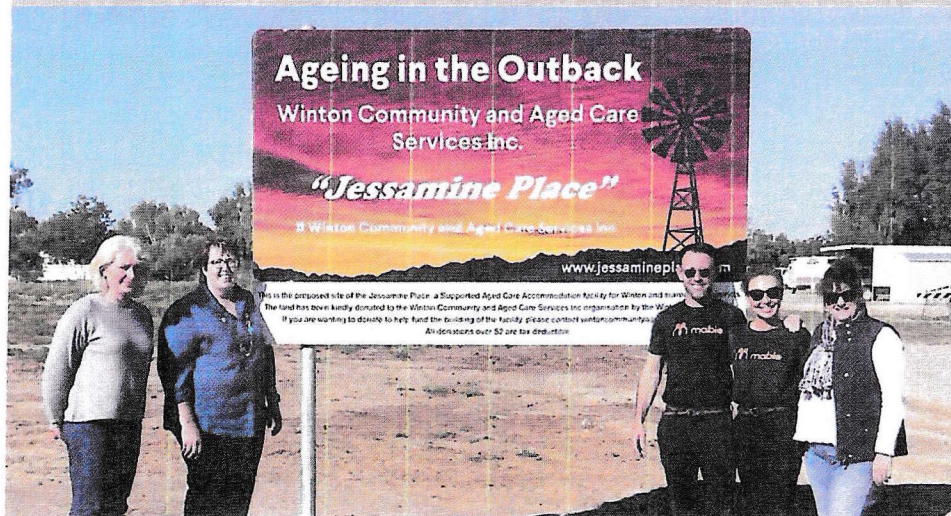
Current state not accurate

Current medical practice is not fit-for-purpose and this is well documented.. There are a lack of Allied Health Service delivery due to the availability of space to deliver services.

No operational strategy or workforce plan

Significant work needed to operationalise plan. The workforce solution has already been developed by WCACS.

COMMUNITY VOICE & INVESTMENT



Strong ownership

The Winton community has invested heavily in Jessamine Place.

Robust strategy and operational plan

Operational strategy and workforce solutions already in place.

Established NFP with DGR Status

Well positioned for funding opportunities for the build and to support ongoing expansion opportunities including secondary funding sources through philanthropic contributions.

WHOLE OF GOVERNMENT SUPPORT

Local Government

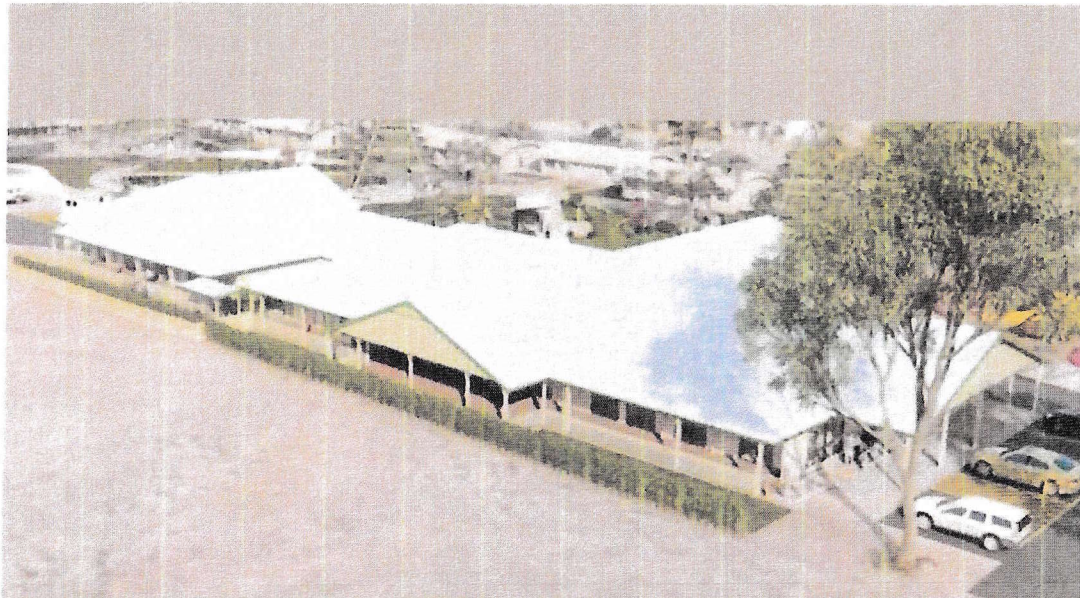
Winton Shire Council have been longstanding supporters of Ageing in the Outback. Gifted land and funding for Jessimine Place facility.

State Government

Positive support from Queensland Health and other state partnerships.

Federal Government

Ongoing support for Jessimine Place as part of broader Ageing in the Outback strategy. Strong alignment with national and international priorities for rural and remote Aged Care and disability services.



FORWARD TOGETHER



Integrated precinct

With Jessamine Place at the
Heart

Genuine consultation

A precinct informed by
community needs and
evidence. Consumers and their
families as partners.

Future sustainability

A financially viable and
sustainable long term solution
for the community.

QUESTIONS

