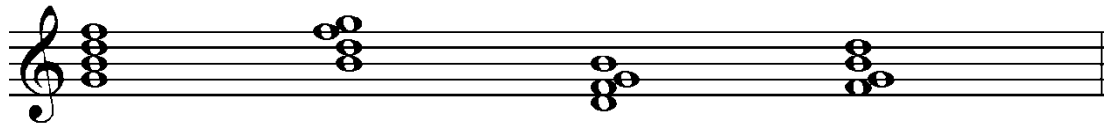




4-note Chord Voicings

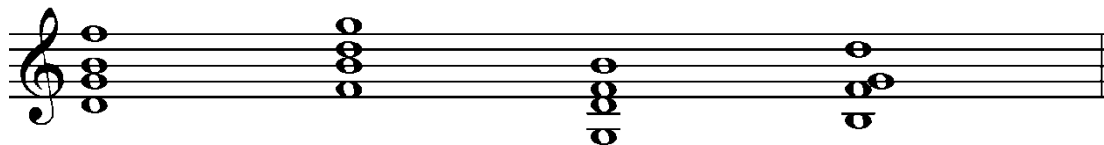
Close Position

Close position means that chord tones are tightly clustered together in the closest possible voicing (i.e., there are no vacant chord tones). Close position chords, however, are difficult to play on the guitar (see examples below). As a result, guitarists prefer to voice chords using drop 2, drop 3, or drop 2 and 4 voicings.



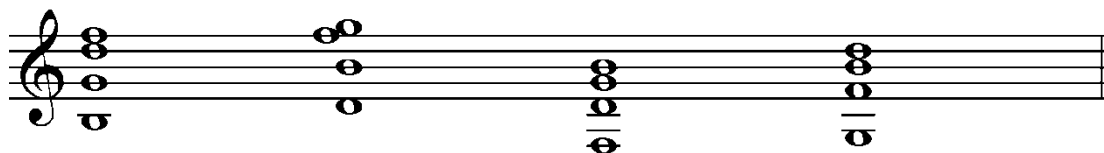
Drop 2

In a drop 2 voicing, the second note from the top of any close position voicing is *dropped* (transposed down) one octave (see examples).



Drop 3

Drop 3 voicings drop the third note from the top of any close position chord down one octave (see examples).



Drop 2 and 4

Drop 2 and 4 voicings drop both the second and fourth note of close position voicings down one octave (see examples).

