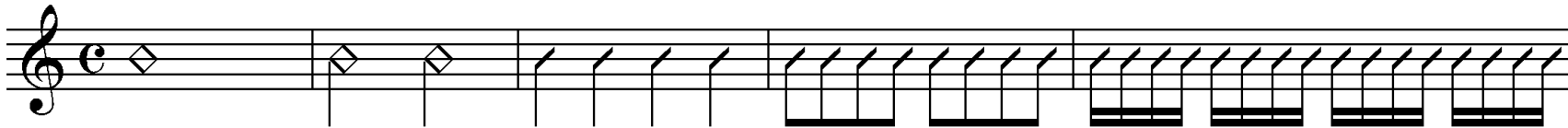




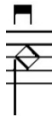

# Basic Strumming Patterns in 4/4 Time

Different Types of Notes:

Whole note = 4 beats	Half note = 2 beats	Quarter note = 1 beat	Eighth note = 1/2 beat	Sixteenth note = 1/4 beat
-------------------------	------------------------	--------------------------	---------------------------	------------------------------



**Directions:** Start with measure one below and practice it slowly until it becomes natural and then increase the tempo. Move on only when you can play a pattern perfectly for several measures.

Strumming Symbols:      **Down Strum** =       **Up Strum** = 

1 2 3 4

5 6 7 8

9 10 11 12