

## 1.

### 規格：

型 號	JS-630MDH1	JS-630MDH2
檢測探頭	單探頭	雙探頭
電源電壓	單相 AC220V 50/60 Hz	
電源功率	120W	200W
檢測通道高度 ( mm )	100 mm ( 150mm 200mm)	
檢測通道寬度 ( mm )	600 mm	
標準檢驗塊、鋼球規格 ( mm )	Φ1.0 (Φ 1.2 Φ1.5)	
敏感度調節	1-10 級連續可調	
輸送帶速度	30 m/min	
探測方式	磁性感應	
報警方式	電子蜂鳴器鳴響，輸送帶停止或倒送、發光燈指示	
整機外型 L×H×W (mm)	1650×1040×920	2230×900×1050
重量(Kg)	220 kg	330kg

## 2. 部份說明：

### ■ 電源控制箱

1. 電源插頭：插入帶有良好接地線的專用插座，務必使本機電動機電壓與電源相適應。

### ■ 操作面板

1. **POWER**：電源開關按下電源接通，紅色指示燈發光。
2. **AUTO RETURN**：自動退回。
3. **OPTO SW**：紅外線光電開關，“ON”方向適應被檢測物能可靠擋住紅外線光束時，此儀器檢測電路工作。如果被檢測物高度低於 15mm，或者具有半透明漏光情況，不能可靠擋住紅外線光束時，應將開關置於“OFF”位置，儀器檢測電路始終處於工作狀態，應避免外部環境對儀器的干擾。
4. **AUTO START**：自動啟動
5. **計數器**：六位元顯示，工作原理為被檢測物可靠擋住紅外線光束一次，計數器累計加 1，如被檢測物高度低於 15mm 或半透明或漏光時，計數器不能正常工作，顯示為合格品計數，不合格品不計數，計數器自帶鋰電池，壽命約 10 年（25 攝氏度），計數器自帶清“0”按鈕，“LOCK”位置可防止他人誤按，計數器右邊按鈕按下為“ON”，計數器工作，“OFF”為斷開計數器。
6. **DETECT 9N**：9 位置檢測狀態為顯示窗，對應於檢測通過橫向排列的 9 個感測器，發光燈亮對應於通過某一位置有檢出異物（最先檢出的感測器相應位置發光燈發光）如果

顯示需邊緣位置不斷閃光提示有外部干擾，如某位置周期性發光、提示輸送帶上相應位置有污染物，應排除干擾，清洗輸送帶。

7. **LEVEL**：儀器感應度設定顯示，光柱亮得越多表示儀器感應度設定越高。
8. **MONITOR**：儀器動態感應顯示，光柱亮得越多表示儀器感受到鐵磁性物質強度越高，工作時可反映鐵磁性物質的質量大小及探測器感測器的距離有關，不工作時如此光柱不停發光，應檢查外部環境是否存在干擾（如高壓電線、電力變壓器、電動機、機械設備等）以及儀器是否存在晃動、輸送帶是否污染。
9. **START/STOP**：起動與停止按鈕。
10. **靈敏度調節旋鈕**：ZERO 為最小、MAX 為最大。

### 3. 使用說明：

1. 接上帶接地線的與機器所需電壓相適宜交流電源。
2. 按下“POWER”及“START/STOP”（操作面板上），輸送帶就會運轉，即可開始檢測工作，按“START/STOP”輸送帶就會停止。
3. 機器操作面板上裝有探測感度顯示窗、檢測位置顯示窗，內部裝有自動報警裝置，並裝有計數器。若檢測到鋼針或含鐵金屬物、機器就會自動報警，指示燈能顯示檢測位置，輸送帶停止運行，不合格品退回到操作者面前，合格品則順利通過並對合格品進行計數。（不合格品不計數）。

### 4. 注意事項：

1. 將本機附帶的檢驗塊或者將你要探測的鋼針及鐵質碎片之樣品先通過機器試測要確定機器發生警報聲，輸送帶停止才可正常運行工作。
2. 本機器能夠檢測的材料為鐵製品、含鐵製品。純鋁、銅非鐵磁性物質不能檢測。
3. 本機器對移動的金屬物體有所反映，操作者請勿攜帶金屬類飾品操作本機。

如 何 使 用	注 意 事 項
1. 將電源線接上適宜電源	使用電源線應插在帶接地線的專用插座上，如和其他電動機器共用插座時，將產生干擾並易造成錯誤報警
2. 按電源開關	機器通電時，紅燈會亮
3. 按運行/停止開關	此開關控制電動機通電，輸送帶就會運轉
4. 如何調整輸送帶	輸送帶跑偏時，請用隨機內六角扳手調整

### 5. 特點：

1. 連續式檢針機能輕易且可靠的將鋼鐵類雜物檢測出來，並且有信號器提示你已檢測出鐵磁性雜物。
2. 當機器檢測到鋼針或鐵類東西時，報警器就會響，輸送帶就會停止，位置顯示指示燈顯示被檢測物中混入的鐵類雜物的位置，並將不合格品退回，效率將會有很大的提高。
3. 機器裝有計數器，能夠累計檢測合格物品數量。
4. 連續式檢針機，操作敏感度的調整配合你的檢測物品的大小及種類，使你能輕易找到混在產品中的鋼針及鐵磁性雜物。
5. 由於採用最新設計的傳感裝置，大大提高了產品的探測能力和信賴感。

## 6. 用途：

1. 連續式檢針機可用來探測藏在各式縫件產品（如男裝、女裝、童裝、內衣、和服、茄克、床上用品、鞋帽手套、長毛絨玩具、地毯、衛生用品）中的針、斷針及其他鐵質碎片等，還可在藥品、食品（食用菌、魚、肉、果品等新鮮及其製品）衛生材料等的檢測，服裝輔料拉鏈、鈕扣的檢測，還可用於非鐵磁性材料如銅、鋁、鋅、造紙、橡膠、化工工業原料等檢測時混在其中鐵質碎片等。
2. 在檢測縫製類物品的配件例如，拉鏈、鈕扣、鉤子等要考慮專用的無鐵磁性商品（如經消磁處理等）。
3. 在使用連續式檢針機，操作者身上衣物的鐵質物件須取下，因為機器對移動的鐵質物件都會有反應，而產生誤報警。

## 7. 安裝應注意事項：

1. 機器在投入使用之前，請置於無震動水平場所，必須先將四個地腳螺栓調節到使整台機器平穩托起，四隻方向輪脫地，使機器處於水平位置，固定緊固螺釘不可有晃動。（否則，會導致輸送帶擺動）。
2. 不可將此機器安裝在鐵制工作臺上，或鐵的架子旁邊。
3. 不可將此機器安裝在會產生磁場的機器附近，因為例如電動磁性的有離合器馬達，縫紉機，裁剪機，打包機，空調機器，電力變壓器，高壓電線吊扇或者有轉動器的機器等都會產生電力及磁場的干擾，而造成此機的錯誤運轉。
4. 機器要安裝在遠離大型的移動鐵質物件（例如：火車、汽車等）的地方。
5. 此機器應遠離鋼鐵材料（例如：鐵門、鐵窗等），有時可改變機器主體方向，以改變安裝此機器的位置，可避免造成錯誤運轉的情形。
6. 此機器會產生磁場，操作者應注意你的信用卡、提款卡、電話卡及放置附近的電話機、卡帶，可能受此機器磁場影響。
7. 安裝此機的位置適宜氣候應在 0 攝氏度到 40 攝氏度之間，且不可有在冰點以下的情況發生。

8. 安置機器的室內不要有流動的灰塵、鐵粒 ( 鐵粉 ) 的地方，以及非常潮濕有結露產生的地方。

## 8. 敏感度的調整：

1. 用敏感度調節鈕調到“6-8”的位置，如要檢測極細微的針尖或鐵屑，可調節到“9-10”，此時機器對周圍環境金屬物干擾和皮帶的清潔有更高的要求。
2. 當你要在產品探測時，必須要能確定包裝及輔料 ( 紙盒、紙板、尼龍包裝袋或鈕扣、拉鏈等 ) 對機器無任何反應時，你就可作探測的工作。
3. 如果是因為包裝輔料而造成皮帶停止時，則需將敏感度調整鈕由“8-10”轉到“5-7”以確定皮帶不會因為輔料而停止。

注：當你將調整鈕轉到“4”以下時，要探測針細小金屬物質或針尖就會比較困難。

4. 如果在調整過機器敏感度後，皮帶仍不動時則需，在你確定包裝輔料前，就先完成包裝或輔料的探測工作，所以在你選擇包裝或輔料之前，需先測試包裝或輔料是否可正常通過機器。
5. 探測工作完成後將電源關掉，如果你將在一段時間內不使用本機，則需將電源線拔離插座。

## 9. 有關檢針機的操作：

1. 首先將總電源開關打開，然後按“START”按鈕使機器運轉，再將本機附帶的檢驗塊或者將你要探測的針及鐵質碎片之樣品先通過機器試運轉，要確定機器發生警報聲，輸送帶停止才可正常運行工作。
2. 在機器運轉正常的情況下，將被檢測物品輕輕地放在輸送帶上，如被檢測物品沒有問題，就通過此檢針機，且在控制面板上的計數器上由“0”變成“1”，說明被檢測物品 1 件合格品。
3. 在機器運轉正常的情況下，將被檢測物品輕輕地放在輸送帶上，當機器檢測到被檢測物品有斷針鐵釘等之類物品時，機器就會自動報警，並且將被檢測物品退回到操作員面前，控制面板上的計數器不計數，取下不合格品，然後再按一下“START”鍵可繼續操作。
4. 務必在所探測的產品中，找到鐵的碎片位置所在，並將它們拿掉，然後一定要再探測到其中的鐵釘、鐵片。( 在產品中可能會有 2—3 支鐵釘、鐵片，所有一定要再一次經過機器確定無鐵釘、鐵片為止，以策安全 )
5. 在機器作探測工作的同時，也許因為外來干擾而產生誤判，所以請在發現有警報聲時，該件產品需再次的確認。

## 10. 注意事項：

1. 經常檢查輸送帶上是否有殘留斷針、鐵銹、鐵屑、微小的鐵刺、其餘金屬碎片、油污等髒物，應特別注意輸送帶反面是否清潔，經常用乾淨濕毛巾、洗潔精及去鏽靈清潔輸送帶。
2. 檢查皮帶上方感測器，因感測器具有強烈的磁性，有可能附著針或其他金屬碎片，所以需用

膠布或其他方法，將感測器清理，以確定下一次工作時正確判斷。

3. 機器是應用鐵質物品在上下探測器發生的磁場中運動產生感應，電動勢原理工作的，微小針尖縱向方向平行於磁力線方向運動感應度要大於橫向方向運動，機器對不同方向的針尖檢測感度有差異。

## 11.故障簡易排除：

故 障 現 象	原 因	解 決 方 法
1. 機器不工作	A. 電源沒有輸入	檢查用戶電源插座，相線、零線是否完好，是否通電，電壓是否正常。
	B. 保險絲斷	更換 10A 保險絲(電源箱內)
	C. 電源開關問題	更換同型號開關
2. 按 “START” 鈕輸送帶不轉	A. 輸送帶太寬鬆	適當調緊，能運轉即可
	B. 三角傳送帶松脫	適當調整或更換
	C. 電箱內接線松脫	檢查並接好電線端
	D. 繼電器損壞	檢查插座接線或更換
	E. 按鈕損壞	檢查 “START” “停止” 鈕，必要時更換
3. 按 “START” 鈕輸送帶即停止、倒帶	A. 輸送帶及上下探測器上粘口有鐵屑等污染物	1. 清洗輸送帶正反面及探測器 2. 必要時更換輸送帶
	B. 機器周邊有干擾存在	1. 清除干擾，或遠離干擾源 2. 改變機器工作地點，安置方向
	C. 機器未安裝好	水平安置，固定地腳螺栓
	D. 機器敏感度調得太高	將旋鈕調到 “5-7” 檔，注：如置於低於 “4” 檔機器對微小針尖檢測力將減小
	E. 下托滾筒軸承帶磁性	更換進口新軸承（經消磁處理）
故 障 現 象	原 因	解 決 方 法
4. 微小鐵針尖漏檢	A. 小於機器規定的標準	適當調高敏感度
	B. 敏感度鈕調得太低	適當調高敏感度
	C. 電源存在強烈電磁干擾	排除干擾，試將相線零線對調，接好地線 或更換安置場所
5. 輸送帶不能正常工作	A、輸送帶有偏向	如皮帶偏右，在機器沒有電動機那一端將右螺絲調緊，或左螺絲調松，只需半圈微調，若還無法回到正中央，再視皮帶走向加調半圈
	B、輸送帶卷邊	1. 調整皮帶

		2. 適當調松皮帶 注：機器托軸裝有皮帶檔圈稍有偏向不影響工作
6. 計數器誤擠及鐵質品有漏檢	A. 被檢物高度低於 15mm 不能擋住紅外光束	1. 向本公司購買特殊規格光電器 2. 多個被檢測物品同時檢測，使紅外光完全阻擋，但此時計數器準確受影響
	B. 被檢測物品太窄不能擋住紅外光束	同上 2
	C. 被檢測物品是半透明或有空隙使紅外光漏光	將電箱上開關 "OPTO SW" 置於 "OFF"
	D. 光電發射器與接收器沒有對準	調整方位
	E. 光電損壞	更換
7. 其他無法解決故障		1. 請按照說明書規定使用
		2. 與本廠聯繫

## 保养工作：

1.每日上,下午開機實施 15 點測試法

2.工作約 2 小時實施一次檢測

3.換新貨品時檢測

4.以上至少實施 15 點測試法 3 次

<<< 5.每周至少一次完整實施 15 點測試法 10 次

注：隨機所帶檢驗塊規格為標準試驗狀態下的值，根據檢查商品、規格及環境的不同靈敏度也不同，在非標準使用狀態使用時，可能會發生鐵片不能被檢出，由此所造成的損失本公司不負法律責任，請諒解！

## 12. 隨機附件：

保險絲 ( 10A ):	2 個 ( 瓷管保險絲 $\phi$ 10×38 )
內六角扳手 調整皮帶用	1 個
檢驗塊	1 個
布罩	1 個
說明書	1 份

## 1. Specification:

MODEL	JS-630MDH1	JS-630MDH2
Head of detection	Single head	Double head
Voltage	Single phase AC220 V	50Hz /60Hz
Rate	120W	200W
Detective height ( mm )	100 mm (200mm)	
Detective width ( mm )	600 mm	
Detective capability of Iron ball ( mm )	Φ1.0 (Φ1.5)	
Sensitivity adjustment	1-10 steps to adjust	
Speed of conveyor	30 m/min	
Detection method	Detected by magnet	
Alarm	Automatic buzzer and alarm lamp, the conveyor will stop or return.	
Dimension L×H×W (mm)	1650×1040×920	2230×900×1050
Weight (Kg)	220kg	330kg

## 2. Part of direction:

### ■ Power control box

1. **Power plug:** Plug in a good condition ground wire, should be let the voltage and power connects well.

### ■ Control Panel

1. **POWER:** Power switch, press it to connect the power and the red pilot light will flash.
2. **AUTO RETURN**
3. **PHOTO SENSOR SWITCH:** “ON”. It means the detected matter be able to blindfold the infrared rays, so the machine can detect well. If the detecting height is under 15mm or it is transparent or the light is leaking out which unable to blindfold the infrared rays. Please let the switch in “OFF”, and the machine is in working situation. Please avoid the interference from outside environments.
4. **AUTO START:** Machine will be started automatically.

5. **Counter:** 6 units appeared. The principle of detection is when detective matter blindfolds the infrared rays once that counter will accumulate one. If the height of detective matter is under 15mm or it is transparent or the light is leaking out. The counter cannot work normally. It will appear qualified counting numbers and disqualified will not count. The counter has the lithium battery. The life of use is 10 years (25°C). The counter of button "0", "LOCK" can prevent the button be touched. Press right button of counter is "ON" counter will run. And "OFF" will stop the counter running.
6. **DETECT LOCATION:** The position of 9 is showing window. If the detective matters pass the tunnel that the lamp will be lamp on correspondent place. (The detector which detecting foremost will flash the light.) If there are some lights flashing regularly. It means there may have some dust interfere the machine. It needs to clean.
7. **LEVEL:** The sensitivity of machine.
8. **MONITOR:** The sensitivity of machine. When the monitor light level is shown higher, it means the machine interfere by magnet is higher. When machine working, flashing can react the mass and size of detective matters. When machine is not working, but the light still flashing. Please check whether it has any interference of environment (Such as: wires, transformer, electromotor, and machinery equipment.) and whether the machine has shaking or the conveyor belt has some dust.
9. **START:** Start and stop button.
10. **Sensitivity adjustment:** : ZREO is minimum. MAX is maxima.

### 3. Operation Manual:

1. Connect the ground wire and the voltage with suitable power.
2. Press "POWER" and "START/STOP"(The green key), then the conveyor will running. And it is ready to detect the needle. Press "START/STOP"(Red key), the conveyor will stop running.
3. The Control Panel has installed with detecting sensitivity window and the position of detecting window. The inside installs with automatic alarm equipment, and equip with counter. Once it detected the steel needle and ferrous that machine will alarm. The 9 lamps



light can show the detecting position roughly and the conveyor will stop running. The disqualified will be return and it will count the qualified numbers. (Disqualified will not count)

#### 4. Attention:

1. Before detecting, please let our detecting sample or ferrous or needle which you want to detect to pass the detector first. In order to check whether the machine is normal and can alarm or not.
2. This machine can detect the Iron and ferrous. The pure Aluminum and Copper cannot be detected.
3. The machine will react to moving metals. Please don't wear any metal adornment on body.

How to use	Attention
1. Connect the suitable power	The wire should be plug in ground wire, if use with other machine's plug. It may interferes and easy to alarm wrongly.
2. Press the power switch	When the machine is getting through, the red light will flash.
3. Press start/stop switch	The switch controls the machine. Conveyor will start or stop.
4. How to adjust the conveyor	When the conveyor is warping, please use hexagon Hexagonal spanner to adjust.

#### 5. Feather:

1. ON-688CD Automatic conveyor magnetic induction metal detector can detect the needle easily. And it has signaler to tell you there is some ferrous in it.
2. When machine is detected the needle or ferrous, the alarm will sound and the conveyor will stop. The signal light will show the position where the needle or ferrous are and will return the disqualified. It will increase the efficiency of working.

3. Machine equips with counter and it can accumulate the quantity of qualified.
4. ON-688CD can adjust the sensitivity of detecting and to meet the different kind and size of detected matters in order to let you to find the needle or ferrous in your detecting products.
5. It adopt the newly design of trans-induction device. It can increase the product of detection and reliance.

## **6. Purpose:**

1. ON-688CD Automatic conveyor magnetic induction metal detector can use it to detect the needle or ferrous pieces of sewing products. (Such as: male clothing, female clothing, child clothing, underwear, kimono, jacket, bedclothes, shoes, gloves, cat, toll, blanket and healthful ware.) It also can use in material medical and food...etc. (fish, meat, fresh fruits...etc, and its manufacture.) to detect it. And it can detect the clothes of slide fastener, button and use it to detect the ferrous which mixed in nonferrous material, such as copper, aluminum, zinc, paper, rubber, chemicals...etc.
2. When detect the accessory of sewing articles. Such as: Slide fasteners, button, hook...etc. It needs non-magnet products (It may needs to demagnetized)
3. When operator is using machine, please take off the all accessory from the body. Cause machine will react to moving metals and will alarm mistake.

## **7. Attention for installment:**

1. Before using the machine, please settle the machine in level and no vibration place. It needs to fix the four pedal screws on the floor in order to hold the machine stably. (Otherwise, the machine's belt will warping)
2. Please don't install the machine on the working table of iron or near by shelf of iron.
3. Please don't install the machine near by the magnetic field. Such as: the motor of clutch, sewing machine, cutting machine, packing machine, air-condition, transformer, hang-fan and turning machines. They will interfere the machine by their magnet.
4. Machine should install far away the large moving iron matters. (Such as: trains and vehicles)

5. The machine should far away the iron materials. (Such as: iron door or windows.) Sometimes you can change the direction of machine body in order to avoid any interference.
6. The machine will produce the magnet, please take your credit card, ATM card, phone card and the telephone or tape away in order to avoid any interference.
7. The suitable temperature in using machine is around 0°C~40°C. And can't use in freezing point.
8. Don't settle the machine in the room of blowing the dust and very humid place.

## **8. Sensitivity adjustment:**

1. Adjust the sensitivity adjust switch to "6-8". If you need to detect the small or thin needle or iron dust, please adjust to "9-10". And the machines will more sensitivity to the environment's iron materials and belt's clean.
2. When you are using the machine, please check the package and materials (paper case, paper plate, nylon packing bag, button and slide fastener) will not have any reaction of detection.
3. If the belt stop by packing materials, then you need to adjust the switch from "8-10" to "5-7". In order to make sure that the belt will not stop by packing material. Note: When you adjust the switch under "4" that it may difficult to detect the small or thin needle.
4. After adjusted the sensitivity of machine, and the belt still can't move. That you should make sure the packing material has passed the machine normally.
5. After finished, please turn off the power. And if you will not use the machine for a long time, please take the wire away from the plug.

## **9. Concerning the operating of machine:**

1. First, turn on the general power switch of control panel. Then press the "START" to let the machine running. And use the test sample along with the machine or the sample that you want to test to pass the machine. Then make sure the machine will alarm, the conveyor belt will stop that you can use it.
2. Put the detected matter on the conveyor when machine is running normally. If the detected matter is ok, that it will pass through the detecting area and the counter will count from "0" to "1". It means the qualified has 1 piece.
3. Put the detected matter on the conveyor when machine is running normally. When machine is detecting the needle or ferrous metals that machine will alarm, and will return it back. The

counter will not count the disqualified matter. Take it away and keep detecting the others.

4. You must find the needle that is in the detected matters, and then take it away. (It may have 2-3 needles or ferrous materials in the matters. So you need to find them and make sure it can pass the machine normally.)
5. The detecting work may interfere by environment and alarm mistook. So when machine alarm that you must check it again.

## 10. Attention:

1. Please check the conveyor belt whether it has needle, iron dust, ferrous thing and oil spot...etc regularly. Especially, you need to check whether the reverse of belt is clean or not. And used to use wet towel, cleaner to clean the conveyor belt.
2. Please check the sensor on top of belt. Because the sensor has stronger magnet. It may attach some needle or other ferrous pieces. So you need to use adhesive or other way to clean it in order to make sure it will working normal next time.
3. The principle of detecting is using the ferrous matters active in detector of magnet to react. And the sensitivity of machine will effect by different direction of needle cap.

## 11. The solution of breakdown:

BREAKDOWN	REASON	SOLUTION
1. Machine didn't work.	A. The power didn't input	Check the power plug, connecting wires whether it is complete and the voltage is normal or not.
	B. The fuse has broken	Change 10A fuse (in power box)
	C. Something with power switch	Change the same model switch
2. Press "START" button but the conveyor didn't running.	A. The conveyor is too loose	Adjust it tight, just let it running normally
	B. Triangular conveyor has loosened	Adjust or change it
	C. The connecting wire has loosened	Check and connect the wire
	D. The relay has broken down	Check the plug and wire or change it
	E. The button has broken	Check the "START" button · change it once broken

3. Press "START" button, the conveyor belt will stop and return	A. Conveyor belt and detector of upper and lower attach some iron dust	1 · Clean the conveyor belt of obverse and reverse and detector 2 · If possible, change the conveyor belt
	B. It has some interfere near the machine	1. Clean the interfere or away from the interference 2. Change the place to work and the direction of settle
	C. The machine didn't install already	Put the machine in level and fixed the pedal screw
	D. The sensitivity of machine adjust too high	Adjust the switch to "5-7", Note : If the sensitivity is under "4" that may decrease the ability of detecting small cap needle
	E. The lower roller bearing has magnet	Change the new bearing( it has demagnetization)
4. The small needle didn't detected	A. The sensitivity is under our standard	Adjust the sensitivity higher

BREAKDOWN	REASON	SOLUTION
4. The small needle didn't detected	B. The sensitivity is adjusting too low	Adjust the sensitivity higher
	C. The power has something stronger magnetic interference	Eliminate the interference and try to change over the wires and connect the ground wire or change the setting place
5. The conveyor can't work normal	A. The conveyor is warping	If the belt is warping to the right · please screw the right screw in which without electromotor side or loose the left screw. It only needs to adjust half circle. If it still can't back to the middle. Please adjust half circle depends on the direction of belt.
	B. The conveyor is coiled	1 · Adjust the belt
		2 · Loose the belt a little bit Note : The machine's bearing has equipped the stop roll, it may has some warping but it doesn't matter

6. The counter has counted wrong and something wrong with detecting the iron matters	A. The detective high is under 15mm and can't blindfold the infrared rays	1 · To buy the special specification of photoelectric 2 · Many detective matters have detected in the same time. And let the infrared rays is totally blindfold completely. The counter's preciseness will be effect
	B. The detective matter is too narrow to blindfold the infrared rays	Same as below 2
	C. The detective matter is translucence or the infrared rays is leaking out from gap	Let the switch of electric box "OPTO SW" to "OFF"
	D. The photoelectric transmitter and receiver didn't aimed.	Adjust the direction
	E. The photoelectric has broken	Change it
7. Others		1 · Please refer the manual to use it
		2 · Contact with us

**Note :** The detective sample's specification is tested in standard situation. According to different products, specification and environments it may has different sensitivity. Under non-standard situation to use that may happen the iron cannot be detected. Any damaged cost from this situation, we are sorry and we don't afford any legal duty. We beg your consideration!

## 12. Accessory:

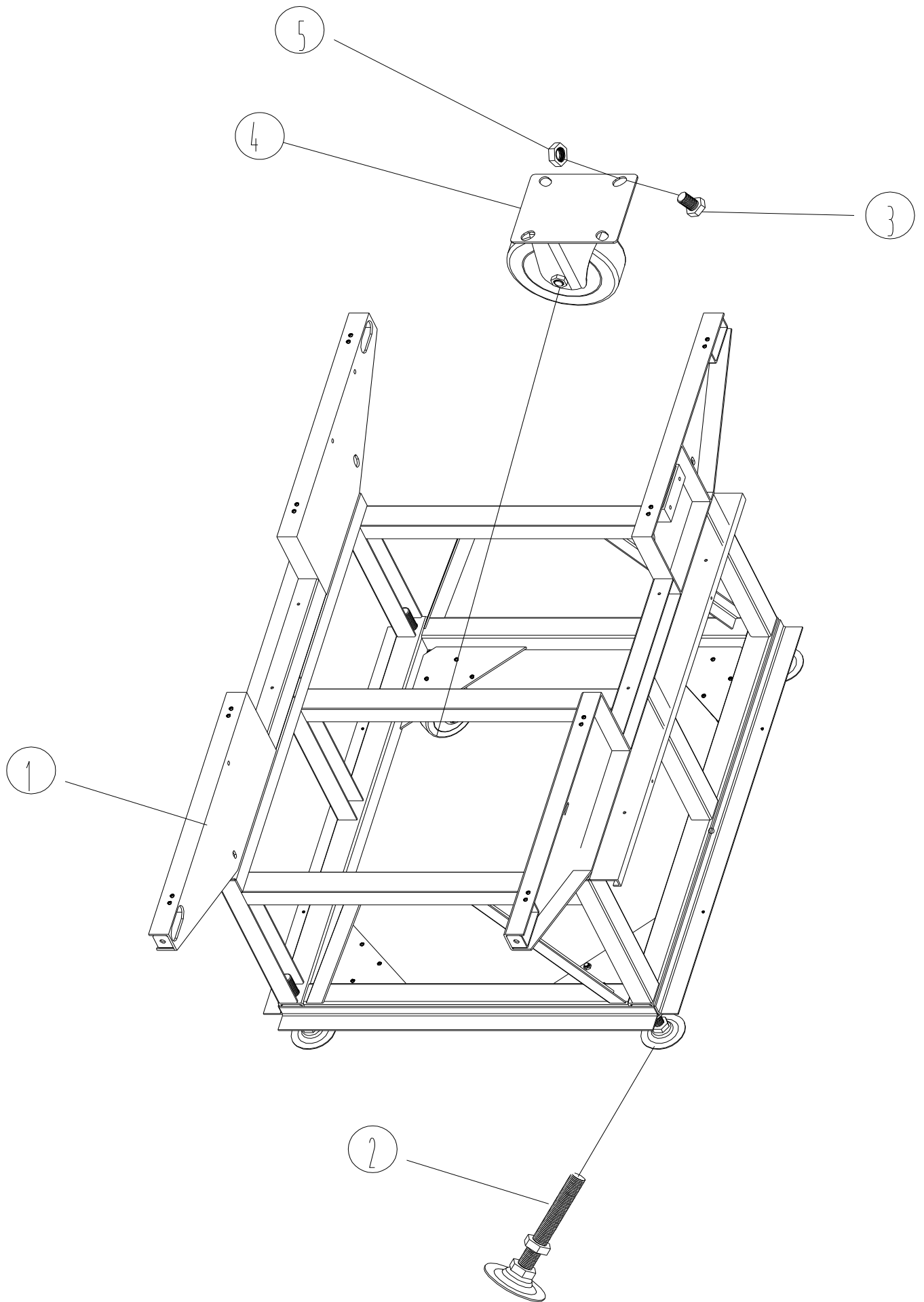
Fuse (10A): 2 pieces (enamel fuse 10\*38)

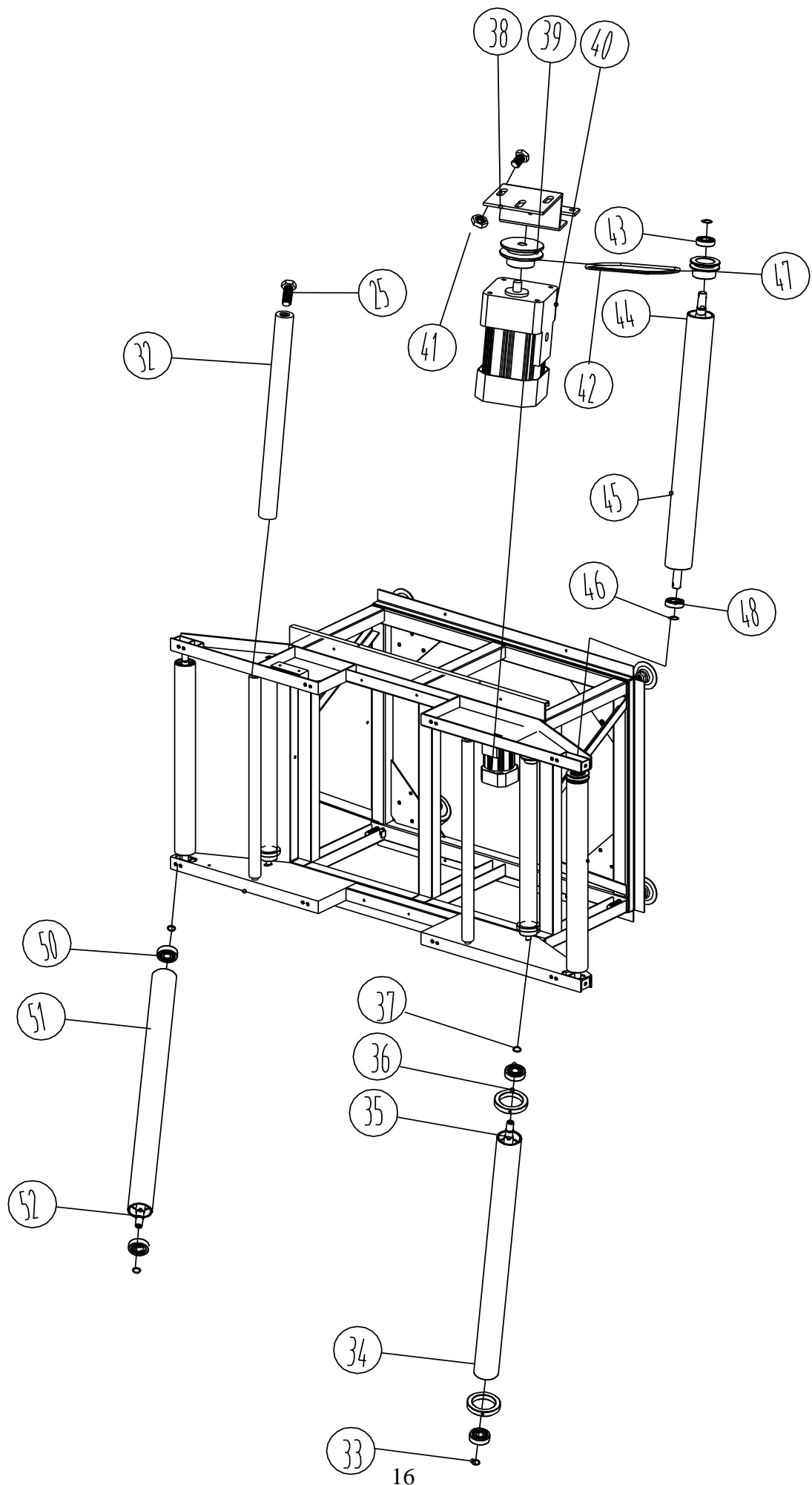
Inside of hexagon spanner for adjusting the belt: 1 piece

Detective sample: 1 piece

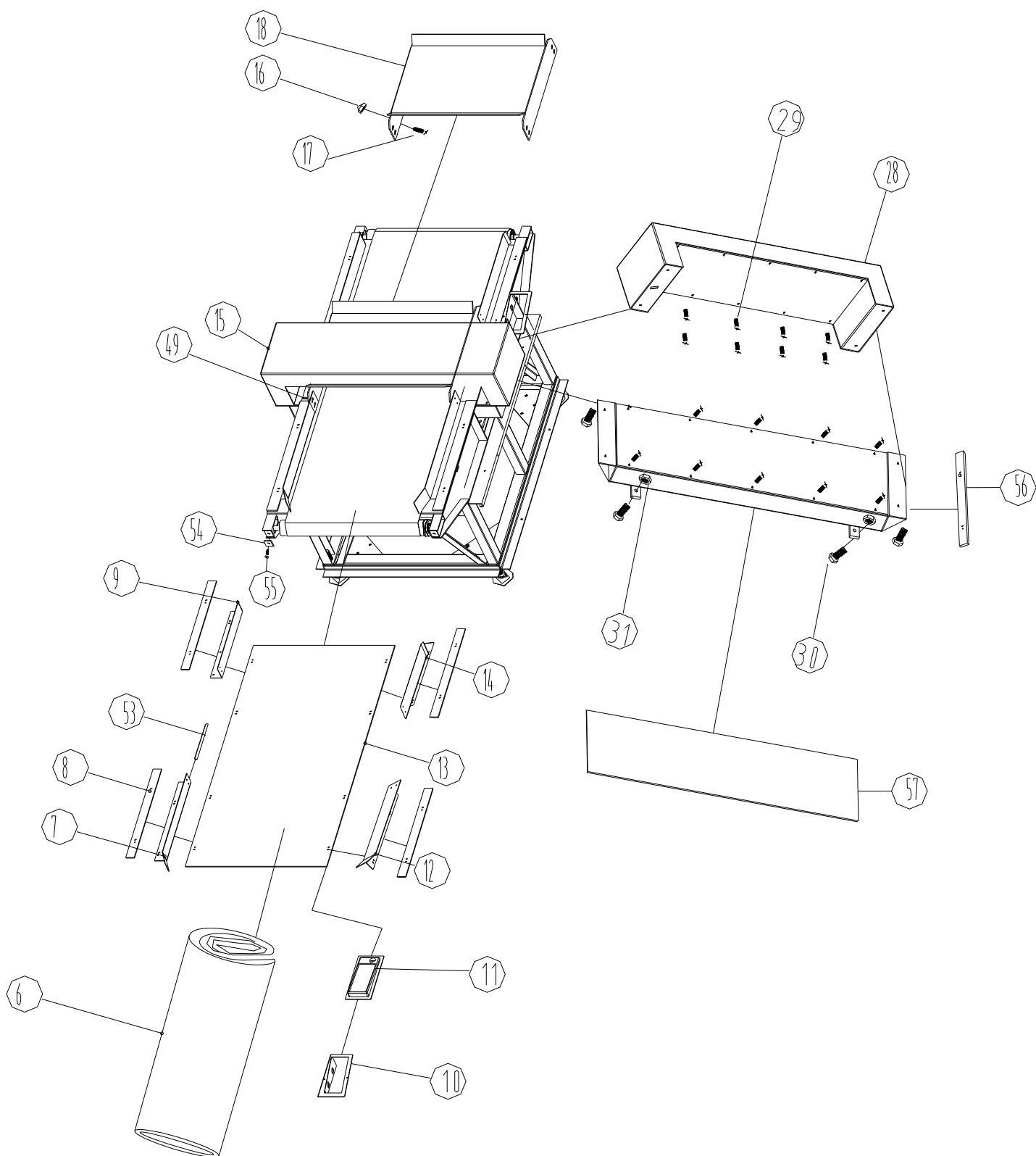
Clothe cover: 1 piece

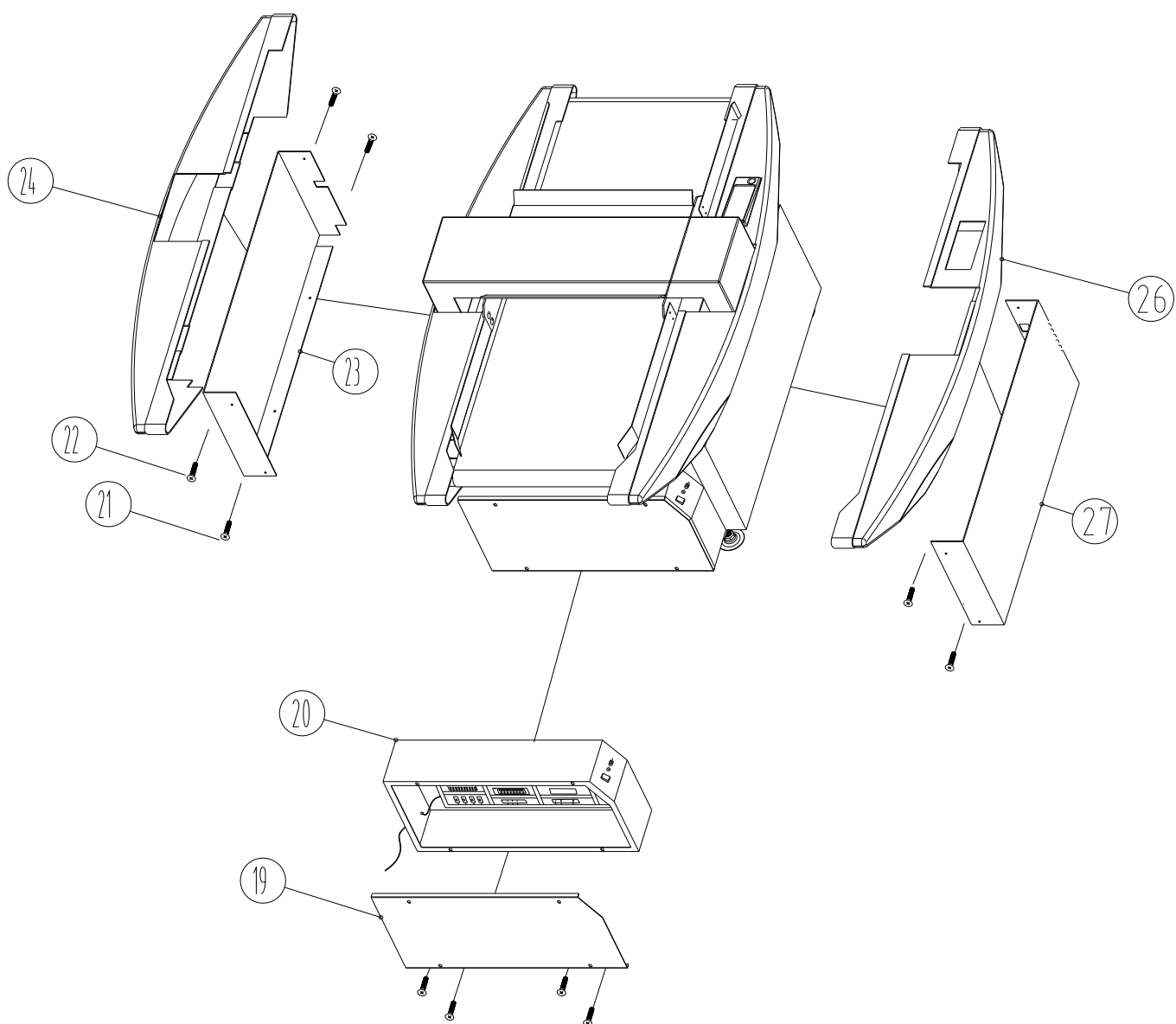
Manual: 1 reel











# 明细表

序号	代号	名称	数量	序号	代号	名称	数量
1	ZD630.5	机架	1	30	GB5783-86	螺栓 M8X16	4
2	ZD630.8	地角	4	31	GB6170-86	螺母 M10	4
3	GB5783-86	螺栓 M8X16	16	32		拉杆	2
4		万向轮 P100N	4	33	GB894.1-86	挡圈 19	4
5	GB6170-86	螺母 M8	16	34	ZD630-2.3	套筒	2
6		输送带 570X3300X1	1	35	ZD630-2.1	轴	2
7	ZD630-3	后挡板	1	36	ZD630-2.2	套环	4
8	ZD630-9	后垫板	1	37		轴承 6302-2RS	2
9	ZD630-18	前挡板	1	38	ZD630-2	电机支架	1
10	ZD630-13	显示屏架	1	39	ZD630-20	皮带轮	1
11	ZD630-12	显示屏	1	40		减速电机 60W,i1:7.5	1
12	ZD630-7	后挡板左	1	41	GB6170-86	螺母 M8	3
13	ZD630-8	面板	1	42		三角带 O-630	1
14	ZD630-19	前挡板左	1	43		轴承 6004-2RS	2
15	ZD630.6	上探头	1	44	ZD630-3-0	轴	2
16	GB802-76	螺母 M4	8	45	ZD630.3.3	套筒	2
17	GB5783-86	螺钉 M4X20	8	46	GB894.1-86	挡圈	4
18	ZD630-11	通道护罩	1	47	ZD630.3.2	皮带轮	1

19	ZD630.4	电柜箱盖	1	48		轴承 6304-2RS	2
20	ZD630-5	电柜	1	49		光电管	1
21	GB818-85	螺钉 M6X12	2	50		轴承 6304-2RS	2
22	GB818-85	螺钉 M6X12	2	51	ZD630.3-3	套筒	2
23	ZD630-4	护罩右下	1	52	ZD630.9-1	轴	2
24	ZD630-16	盖板右上	1	53		橡胶套	4
25	GB5783-86	螺栓 M8X20	4	54		调节板	4
26	ZD630-1	护罩左上	1	55	GB2672-83	调节螺钉 M8120	4
27	ZD630-15	护罩左下	1	56		橡胶垫	2
28	ZD630.6	上探头	1	57		垫板	2