

Features:

- 1200V Schottky Diode
- Zero Reverse Recovery Current
- High Frequency Operation
- Positive Temperature Coefficient
- Temperature independent

Switching

Benefits:

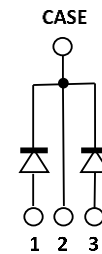
- Unipolar Rectifier
- Minimal switching loss
- Higher Efficiency
- Low cooling requirement

Symbol	Value	Unit
V_{RRM}	1200	V
I_F ($T_C = 155^\circ\text{C}$)	40	A
* Q_C	110	nC

Applications:

- Switch Mode Power Supply
- Booster diodes in PFC, DC/DC
- AC/DC converters

Outline

TO-247-3
Circuit

Maximum Ratings (*Per leg)

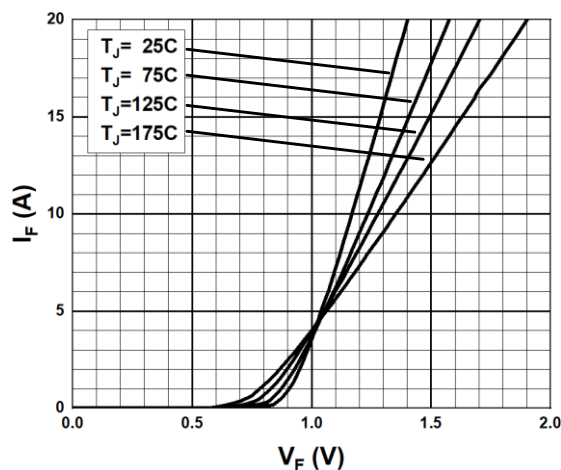
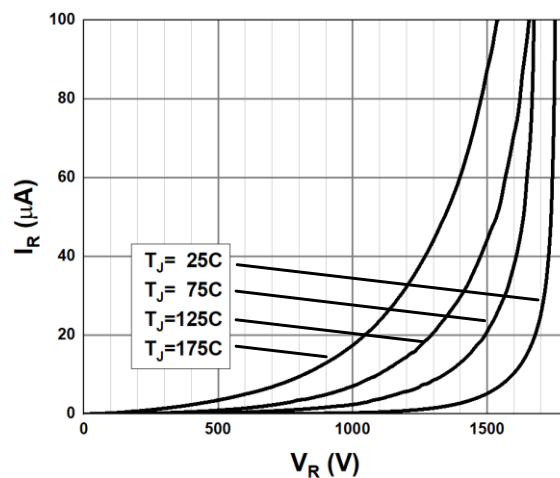
Symbol	Parameter	Value	Unit	Test Conditions
V_R	DC Peak Reverse Voltage	1200	V	$T_J = 25^\circ\text{C}$
V_{RRM}	Repetitive Peak Reverse	1200	V	$T_J = 25^\circ\text{C}$
V_{RSM}	Surge Peak Reverse Voltage	1300	V	$T_J = 25^\circ\text{C}$
I_F	Continuous Forward Current	*66/132 *31/62 *20/40	A	$T_C = 25^\circ\text{C}$ $T_C = 135^\circ\text{C}$ $T_C = 155^\circ\text{C}$
I_{FRM}	Repetitive Peak Forward Surge Current	*222 *178	A	$T_C = 25^\circ\text{C}, T_P = 10\text{ms}, \text{Half Sine Wave}$ $T_C = 125^\circ\text{C}, T_P = 10\text{ms}, \text{Half Sine Wave}$
I_{FSM}	Non-Repetitive Peak Forward Surge Current	*261 *235	A	$T_C = 25^\circ\text{C}, T_P = 10\text{ms}, \text{Half Sine Wave}$ $T_C = 125^\circ\text{C}, T_P = 10\text{ms}, \text{Half Sine Wave}$
P_D	Power Dissipation	*300 *100	W	$T_C = 25^\circ\text{C}$ $T_C = 125^\circ\text{C}$
$T_{J,max}$	Operating Junction Temperature	175	$^\circ\text{C}$	
T_{stg}	Storage Temperature Range	-55 to 175	$^\circ\text{C}$	

Thermal characteristics (*Per Leg)

Symbol	Parameter	Min.	Typ.	Max.	Unit
R_{thJC}	Thermal resistance		*0.5/0.25		$^{\circ}C/W$

Electrical Characteristics (Per leg)

Symbol	Parameter	Value			Unit	Test Conditions
		Min.	Typ.	Max.		
V_{DC}	DC Blocking Voltage	1200			V	$I_R = 400\mu A, T_J = 25^{\circ}C$
V_F	Forward Voltage		1.4 1.9	1.7 2.4	V	$I_F = 20A, T_J = 25^{\circ}C$ $I_F = 20A, T_J = 175^{\circ}C$
I_R	Reverse Current		5 35	100 500	μA	$V_R = 1200V, T_J = 25^{\circ}C$ $V_R = 1200V, T_J = 175^{\circ}C$
Q_C	Total Capacitive Charge		110		nC	$I_F = 20A, dI/dt = 400A/\mu s$ $T_J = 25^{\circ}C, V_R = 800V$
C	Total Capacitance		1665 146 123		pF	$V_R = 1V, T_J = 25^{\circ}C, f = 1\text{ MHz}$ $V_R = 400V, T_J = 25^{\circ}C, f = 1\text{ MHz}$ $V_R = 800V, T_J = 25^{\circ}C, f = 1\text{ MHz}$

Typical Performance (Per Leg)

Fig. 1 Forward Characteristics

Fig. 2 Reverse Characteristics

Typical Performance (Per Leg)

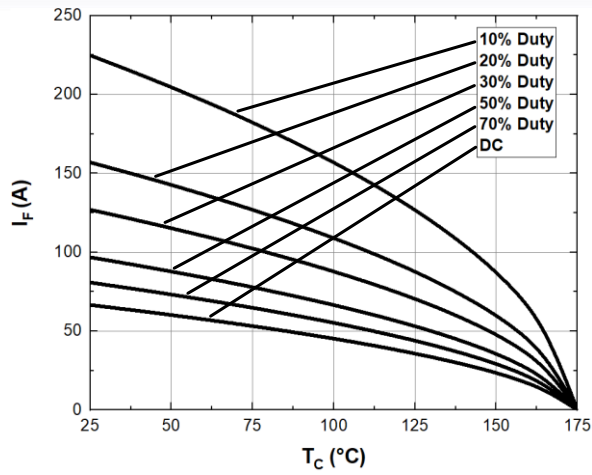


Fig. 3 Current Derating

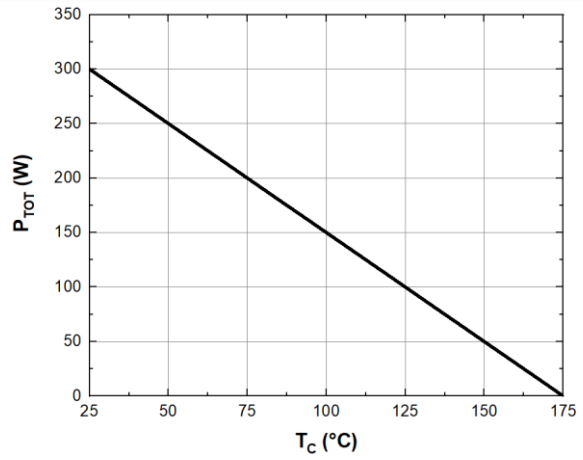


Fig. 4 Power Derating

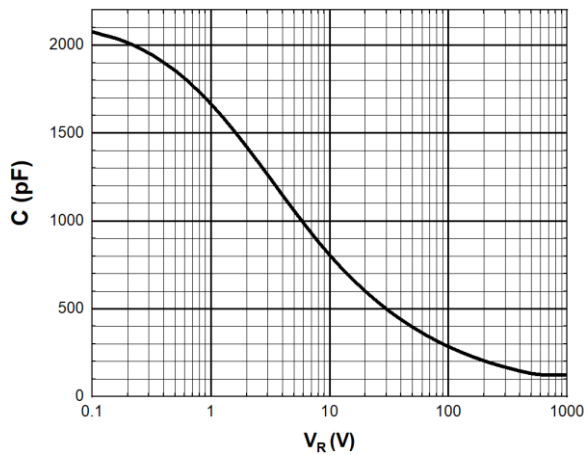


Fig. 5 Capacitance vs. Reverse Voltage

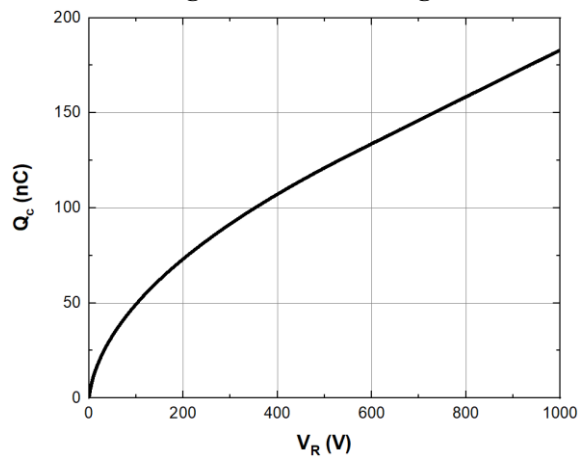


Fig. 6 Recovery Charge vs. Reverse Voltage

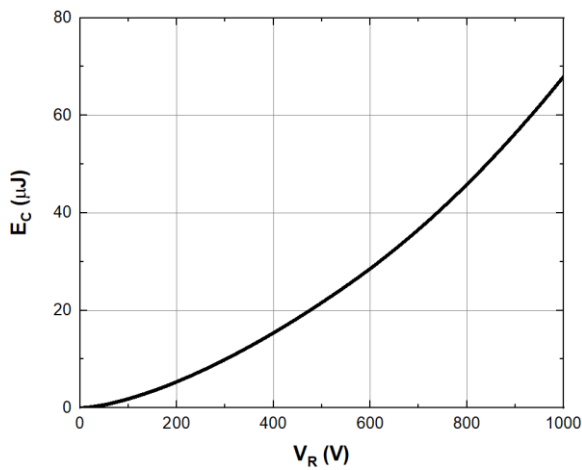


Fig. 7 Capacitance stored Energy

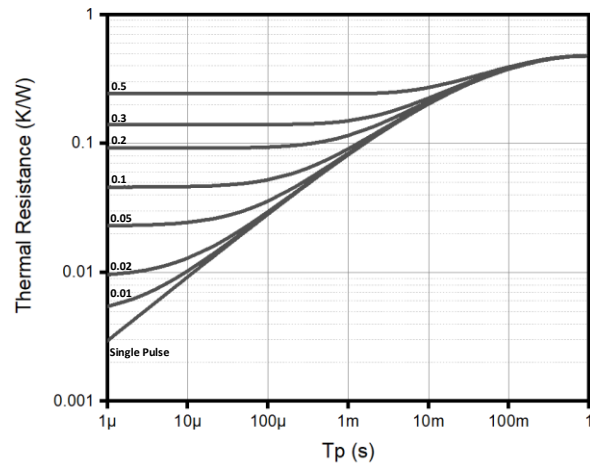
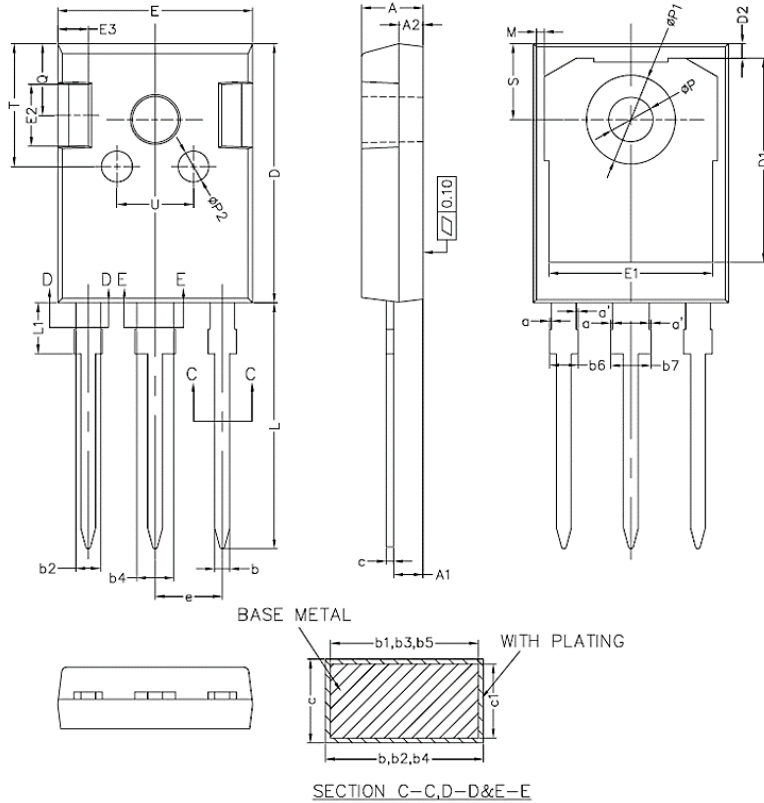


Fig. 8 Transient Thermal Impedance

Package TO-247-3 (Unit: mm)



COMMON DIMENSIONS
(UNITS OF MEASURE=MILLIMETER)

SYMBOL	MIN	NOM	MAX
A	4.90	5.00	5.10
A1	2.31	2.41	2.51
A2	1.90	2.00	2.10
a	0	—	0.15
a'	0	—	0.15
b	1.16	—	1.26
b1	1.15	1.2	1.22
b2	1.96	—	2.06
b3	1.95	2.00	2.02
b4	2.96	—	3.06
b5	2.95	3.00	3.02
b6	—	—	2.25
b7	—	—	3.25
c	0.59	—	0.66
c1	0.58	0.60	0.62
D	20.90	21.00	21.10
D1	16.25	16.55	16.85
D2	1.05	1.20	1.35
E	15.70	15.80	15.90
E1	13.10	13.30	13.50
E2	4.90	5.00	5.10
E3	2.40	2.50	2.60
e	5.34	5.44	5.54
L	19.80	19.92	20.10
L1	—	—	4.30
M	0.35	—	0.95
P	3.50	3.60	3.70
P1	7.00	—	7.40
P2	2.40	2.50	2.60
Q	5.60	—	6.00
S	6.05	6.15	6.25
T	9.80	—	10.20
U	6.00	—	6.40

NOTES:
1. ALL DIMENSIONS REFER TO JEDEC STANDARD TO-247 AD DO NOT INCLUDE MOLD FLASH OR PROTRUSIONS.
2. EJECTION MARK DEPTH $0.10 \pm_{0.05}^{0.15}$

This Product has not been designed or tested for use in, and is not intended for use in, applications implanted into the human body nor in applications in which failure of the product could lead to death, personal injury or property damage, including but not limited to equipment used in the operation of nuclear facilities, life-support machines, systems, or air-traffic control systems.

The information given in this document shall in no event be regarded as a guarantee of conditions or characteristics. With respect to any examples, hints or any typical values stated herein and/or any information regarding the application of the product, AZ Power Inc. disclaims any and all warranties and liabilities of any kind, including without limitation warranties of non-infringement of intellectual property rights of any third party.



AZ Power Inc.
Providing A to Z Power Solutions

5601 W SLAUSON AVE 190
CULVER CITY, CA 90230
WWW.AZPE.COM

Information in this document may change without notice. All referenced product or service names and trademarks are the property of their respective owners. Copyright © 2020 AZ Power Inc. All rights reserved.