

# hi-lo

GAS CUTTING  
AND WELDING EQUIPMENT

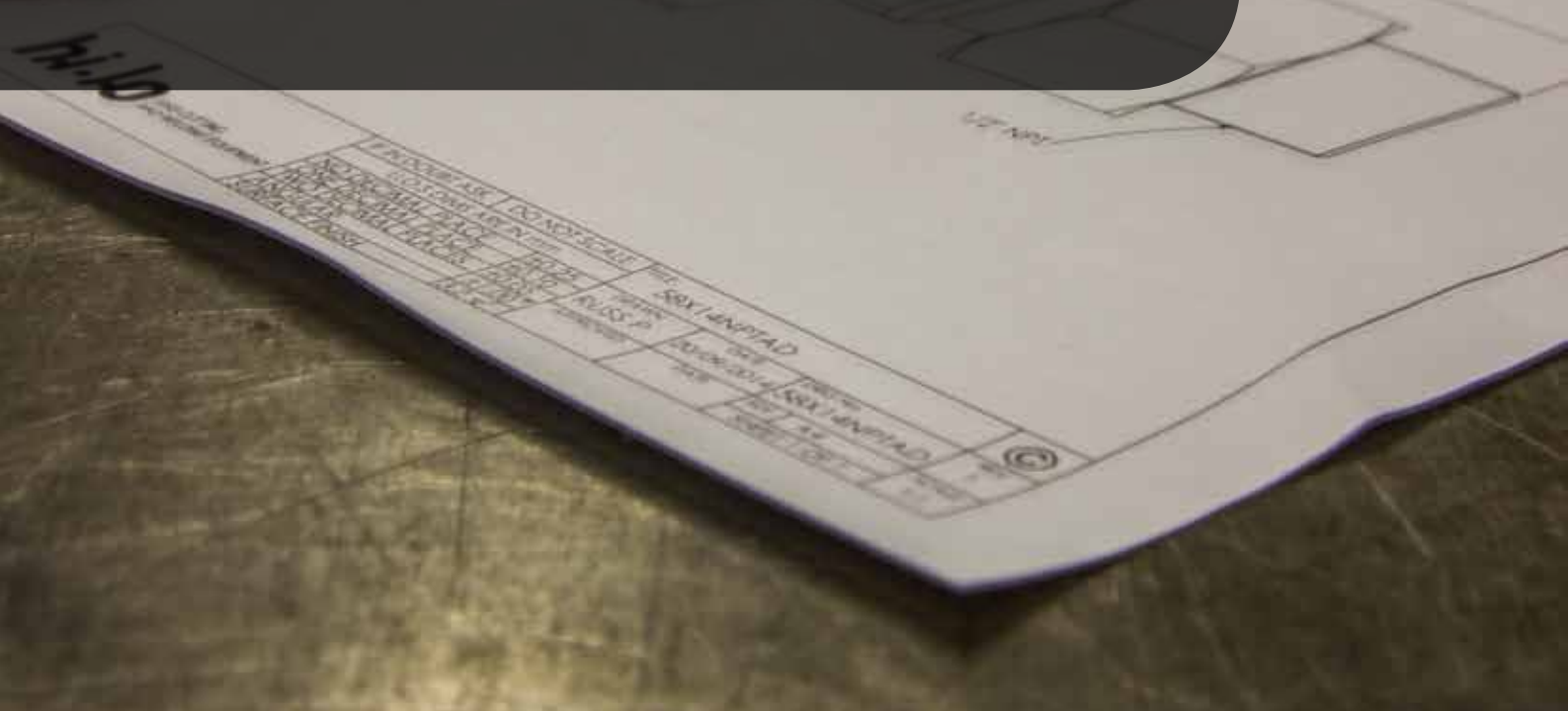


## New Generation FabMaster Elite Gas Regulators



[www.hilouk.co.uk](http://www.hilouk.co.uk)

**Hi-Lo prides itself on it's versatility. We have the ability and expertise to manufacture bespoke products that are used in a vast array of industrial processes. Along with a full stock of standard gas cutting and welding equipment.**



## Contents

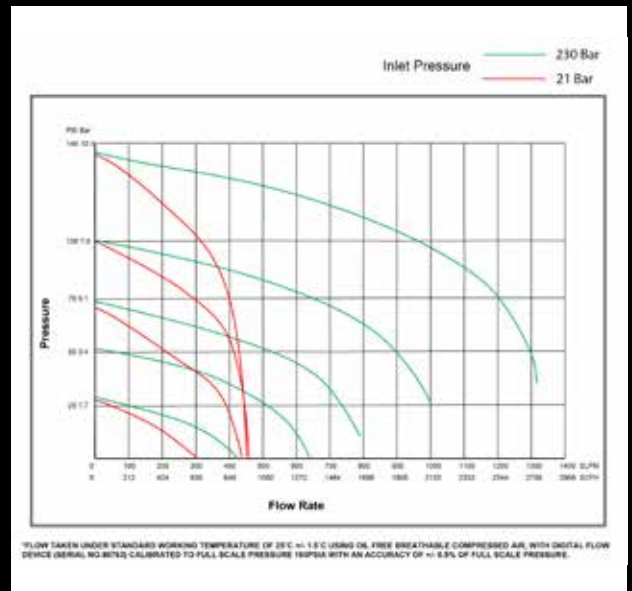
FabMaster Elite Single Stage Regulator	4
FabMaster Elite Two Stage Regulator	6
Rear Entry Line Regulator	8
Rear Entry Regulator	9
High Pressure Regulator	10
HL - 14 High Flow Regulator	13

## FabMaster Elite Single Stage Regulator



### Features

- 300 bar service
- Manufactured under BS EN ISO 9001
- Conforms to BS EN ISO 2503
- High contrast, easy to read gauges
- Alloy bonnet for high strength
- 2 year warranty



Part Number	Description	Gas	Gauges	PSI	Bar	Max Inlet Pressure	Inlet Position*	Inlet Connection**	Outlet Connection
HL050069	Single Stage Regulator	Oxygen	2	30 PSI	2 Bar	300 Bar	Bottom	G5/8 BSP RH	G3/8 BSP RH
HL050070	Single Stage Regulator	Oxygen	2	60 PSI	4 Bar	300 Bar	Bottom	G5/8 BSP RH	G3/8 BSP RH
HL050071	Single Stage Regulator	Oxygen	2	75 PSI	5 Bar	300 Bar	Bottom	G5/8 BSP RH	G3/8 BSP RH
HL050072	Single Stage Regulator	Oxygen	2	150 PSI	10 Bar	300 Bar	Bottom	G5/8 BSP RH	G3/8 BSP RH
HL050001	Single Stage Regulator	Oxygen	Plug	150 PSI	10 Bar	300 Bar	Bottom	G5/8 BSP RH	G3/8 BSP RH
HL050007	Single Stage Regulator	Oxygen	Indicator	150 PSI	10 Bar	300 Bar	Bottom	G5/8 BSP RH	G3/8 BSP RH
HL050073	Single Stage Regulator	Acetylene	2	22 PSI	1.5 Bar	25 Bar	Bottom	G5/8 BSP LH	G3/8 BSP LH
HL050002	Single Stage Regulator	Acetylene	Plug	22 PSI	1.5 Bar	25 Bar	Bottom	G5/8 BSP LH	G3/8 BSP LH
HL050008	Single Stage Regulator	Acetylene	Indicator	22 PSI	1.5 Bar	25 Bar	Bottom	G5/8 BSP LH	G3/8 BSP LH
HL050004	Single Stage Regulator	Propane	Plug	30 PSI	2 Bar	25 Bar	Bottom	G5/8 BSP LH	G3/8 BSP LH

Part Number	Description	Gas	Gauges	PSI	Bar	Max Inlet Pressure	Inlet Position*	Inlet Connection**	Outlet Connection
HL050005	Single Stage Regulator	Propane	Plug	60 PSI	4 Bar	25 Bar	Bottom	G5/8 BSP LH	G3/8 BSP LH
HL050075	Single Stage Regulator	Argon	2	150 PSI	10 Bar	300 Bar	Bottom	G5/8 BSP RH	G3/8 BSP RH
HL050033	Single Stage Regulator Pre-set	Argon	1	30 PSI	2 Bar	300 Bar	Bottom	G5/8 BSP RH	G3/8 BSP RH
HL050036	Single Stage Regulator	Argon	2	150 PSI	10 Bar	300 Bar	Side	G5/8 BSP RH	Nevoc
HL050075CO2	Single Stage Regulator	Co2	2	150 PSI	10 Bar	300 Bar	Bottom	W21.8 x 1/14 RH	G3/8 BSP RH
HL050075NIT	Single Stage Regulator	Nitrogen	2	150 PSI	10 Bar	300 Bar	Bottom	G5/8 BSP RH	G3/8 BSP RH
<b>Argon CFH Regulator</b>									
HL050037	Single Stage Regulator	Argon	2	Flow	0-35 LPM	300 Bar	Side	Nevoc	G3/8 BSP RH
HL050074	Single Stage Regulator	Argon	2	Flow	0-35 LPM	300 Bar	Bottom	G5/8 BSP RH	G3/8 BSP RH

\*Side inlet position available on request

\*\*NEVOC inlet connections also available



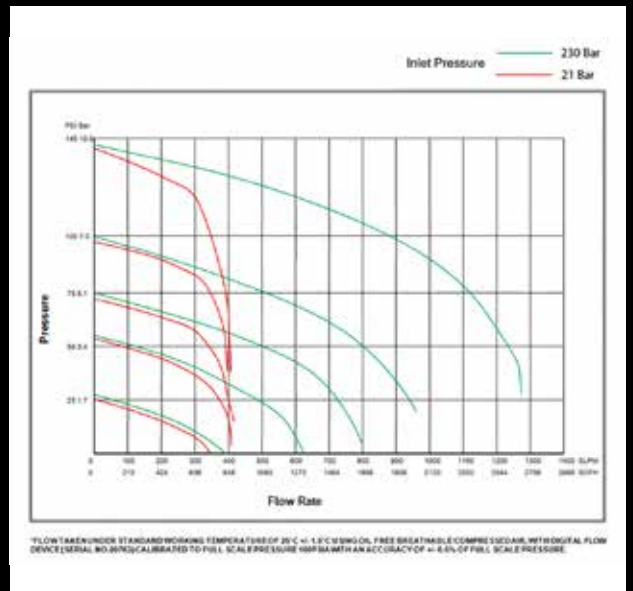
**Excellent design that gives you reliability and confidence in a quality manufactured product.**

## FabMaster Elite Two Stage Regulator



### Features

- 300 bar service
- Manufactured under BS EN ISO 9001
- Conforms to BS EN ISO 2503
- High contrast, easy to read gauges
- Alloy bonnet for high strength
- Precise pressure control
- 2 year warranty



Part Number	Description	Gas	Gauges	PSI	Bar	Max Inlet Pressure	Inlet Position*	Inlet Connection**	Outlet Connection
HL060002	Two Stage Regulator	Oxygen	2	75 PSI	5 Bar	300 Bar	Bottom	G5/8 BSP RH	G3/8 BSP RH
HL060003	Two Stage Regulator	Oxygen	2	150 PSI	10 Bar	300 Bar	Bottom	G5/8 BSP RH	G3/8 BSP RH
HL060004	Two Stage Regulator	Acetylene	2	22 PSI	1.5 Bar	25 Bar	Bottom	G5/8 BSP LH	G3/8 BSP LH
HL060023	Two Stage Regulator	Propane	2	30 PSI	2 Bar	25 Bar	Bottom	G5/8 BSP LH	G3/8 BSP LH
HL060024	Two Stage Regulator	Propane	2	75 PSI	5 Bar	25 Bar	Bottom	G5/8 BSP LH	G3/8 BSP LH
HL060008	Two Stage Regulator	Argon	2	30 PSI	2 Bar	300 Bar	Bottom	G5/8 BSP RH	G3/8 BSP RH
HL060009	Two Stage Regulator	Argon	2	75 PSI	5 Bar	300 Bar	Bottom	G5/8 BSP RH	G3/8 BSP RH
HL060010	Two Stage Regulator	Argon	2	150 PSI	10 Bar	300 Bar	Bottom	G5/8 BSP RH	G3/8 BSP RH
HL060012	Two Stage Regulator	Co2	2	75 PSI	5 Bar	300 Bar	Bottom	W21.8 x 1/14 RH	G3/8 BSP RH

Part Number	Description	Gas	Gauges	PSI	Bar	Max Inlet Pressure	Inlet Position*	Inlet Connection**	Outlet Connection
HL060013	Two Stage Regulator	Co2	2	150 PSI	10 Bar	300 Bar	Bottom	W21.8 x 1/14 RH	G3/8 BSP RH
HL060014	Two Stage Regulator	Helium	2	30 PSI	2 Bar	300 Bar	Bottom	G5/8 BSP RH	G3/8 BSP RH
HL060015	Two Stage Regulator	Helium	2	75 PSI	5 Bar	300 Bar	Bottom	G5/8 BSP RH	G3/8 BSP RH
HL060016	Two Stage Regulator	Helium	2	150 PSI	10 Bar	300 Bar	Bottom	G5/8 BSP RH	G3/8 BSP RH
HL060017	Two Stage Regulator	Hydrogen	2	75 PSI	5 Bar	300 Bar	Bottom	G5/8 BSP LH	G3/8 BSP LH
HL060019	Two Stage Regulator	Hydrogen	2	150 PSI	10 Bar	300 Bar	Bottom	G5/8 BSP LH	G3/8 BSP LH
HL060021	Two Stage Regulator	Nitrogen	2	75 PSI	5 Bar	300 Bar	Bottom	G5/8 BSP RH	G3/8 BSP RH
HL060022	Two Stage Regulator	Nitrogen	2	150 PSI	10 Bar	300 Bar	Bottom	G5/8 BSP RH	G3/8 BSP RH

Side inlet position available on request

NEVOC inlet connections also available



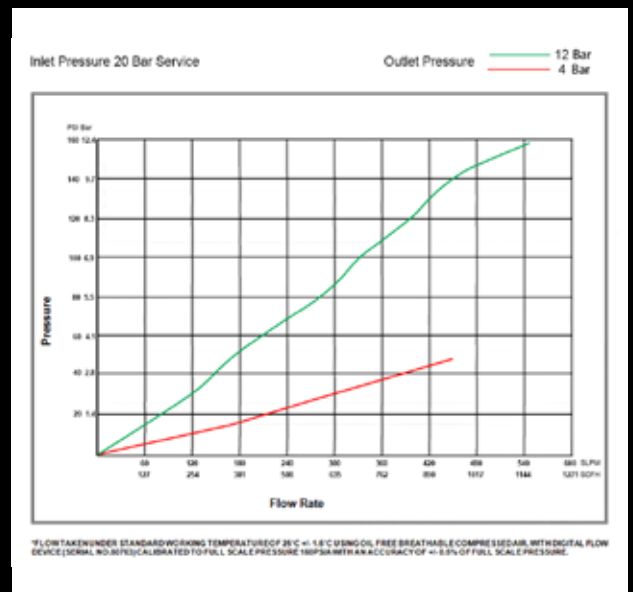
**Hi-Lo regulators are available in bottom or side entry - contact our sales team for further information.**

## Rear Entry Line Regulator



### Features

- 20 bar service
- Manufactured under BS EN ISO 9001
- Conforms to BS EN ISO 7291
- High contrast, easy to read gauges
- Alloy bonnet for high strength
- 2 year warranty



Part Number	Description	Gas	Gauges	PSI	Bar	Max Inlet Pressure	Inlet Position	Inlet Connection	Outlet Connection
HL050121	Single Stage Regulator	Inert	1	60 PSI	4 Bar	20 Bar	Rear	1/4 NPT RH	G3/8 BSP RH
HL050122	Single Stage Regulator	Inert	1	175 PSI	12 Bar	20 Bar	Rear	1/4 NPT RH	G3/8 BSP RH
HL050131	Single Stage Regulator	Oxygen	1	60 PSI	4 Bar	20 Bar	Rear	1/4 NPT RH	G3/8 BSP RH
HL050132	Single Stage Regulator	Oxygen	1	175 PSI	12 Bar	20 Bar	Rear	1/4 NPT RH	G3/8 BSP RH
HL050133	Single Stage Regulator	Acetylene	1	22 PSI	1.5 Bar	20 Bar	Rear	1/4 NPT LH	G3/8 BSP LH
HL050134	Single Stage Regulator	Propane	1	60 PSI	4 bar	20 Bar	Rear	1/4 NPT LH	G3/8 BSP LH

NEVOC inlet connections also available

Alternative inlet connections available on request

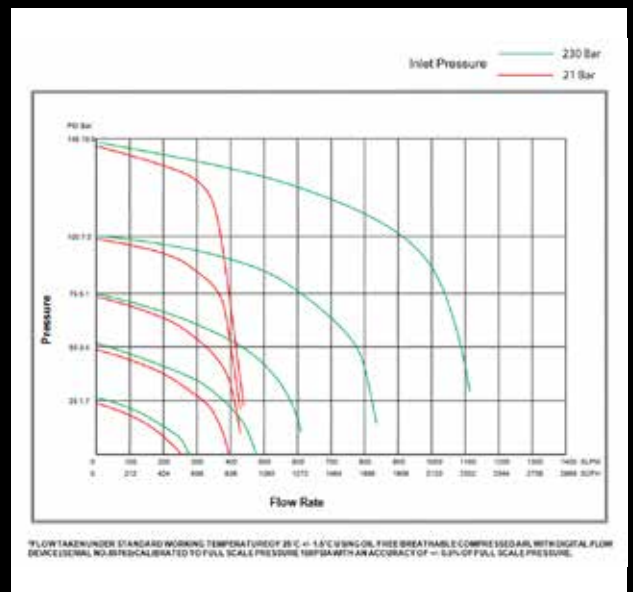


# Rear Entry Regulator



## Features

- 300 bar service
- Manufactured under BS EN ISO 9001
- Conforms to BS EN ISO 2503
- High contrast, easy to read gauges
- Alloy bonnet for high strength
- 2 year warranty



Part Number	Description	Gas	Gauges	PSI	Bar	Max Inlet Pressure	Inlet Position	Inlet Connection	Outlet Connection
HL050119	Single Stage Regulator	Inert	2	75 PSI	5 Bar	300 Bar	Rear	G5/8 BSP RH	G3/8 BSP RH
HL050120	Single Stage Regulator	Inert	2	150 PSI	10 Bar	300 Bar	Rear	G5/8 BSP RH	G3/8 BSP RH
HL050127	Single Stage Regulator	Oxygen	2	60 PSI	5 Bar	300 Bar	Rear	G5/8 BSP RH	G3/8 BSP RH
HL050128	Single Stage Regulator	Oxygen	2	175 PSI	10 Bar	300 Bar	Rear	G5/8 BSP RH	G3/8 BSP RH
HL050129	Single Stage Regulator	Acetylene	2	22 PSI	1.5 Bar	25 Bar	Rear	G5/8 BSP LH	G3/8 BSP LH
HL050130	Single Stage Regulator	Propane	2	60 PSI	4 bar	25 Bar	Rear	G5/8 BSP LH	G3/8 BSP LH

NEVOC inlet connections also available

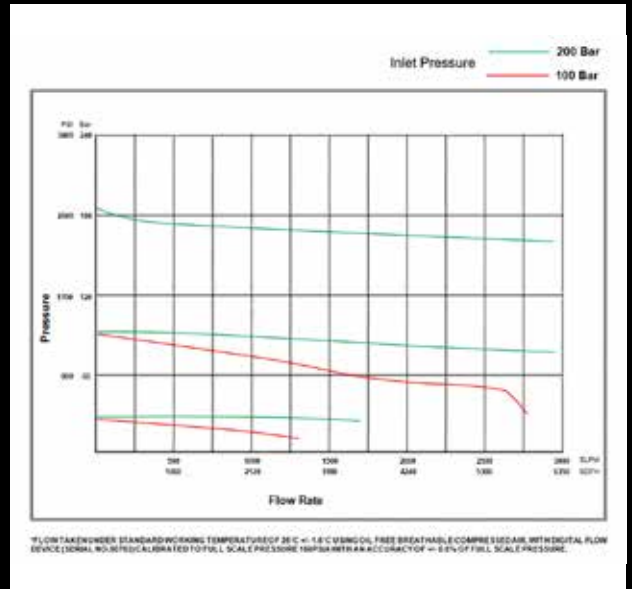
Alternative outlet connections available on request

## High Pressure Regulator



### Features

- Available from 400 to 2500 psi
- 300 bar service
- Manufactured under BS EN ISO 9001
- Pressure gauges conforms to BS EN ISO 5171
- Manufactured from brass bar stock
- 2 year warranty



Part Number	Model No.	Gas	Gauges	PSI	Bar	Max Inlet Pressure	Inlet Position	Inlet Connection	Outlet Connection
HL050104	HL400	Oxygen	2	400	28 Bar	300 Bar	Bottom	G5/8 BSP RH	G3/8 BSP RH
HL050105	HL400	Nitrogen	2	400	28 Bar	300 Bar	Bottom	G5/8 BSP RH	G3/8 BSP RH
HL050106	HL400	Inert	2	400	28 Bar	300 Bar	Bottom	G5/8 BSP RH	G3/8 BSP RH
HL050107	HL600	Oxygen	2	600	41 Bar	300 Bar	Bottom	G5/8 BSP RH	G1/4 BSPT RH
HL050108	HL600	Nitrogen	2	600	41 Bar	300 Bar	Bottom	G5/8 BSP RH	G1/4 BSPT RH
HL050109	HL600	Inert	2	600	41 Bar	300 Bar	Bottom	G5/8 BSP RH	G1/4 BSPT RH
HL050110	HL800	Oxygen	2	800	55 Bar	300 Bar	Bottom	G5/8 BSP RH	G1/4 BSPT RH
HL050111	HL800	Nitrogen	2	800	55 Bar	300 Bar	Bottom	G5/8 BSP RH	G1/4 BSPT RH
HL050112	HL800	Inert	2	800	55 Bar	300 Bar	Bottom	G5/8 BSP RH	G1/4 BSPT RH

Part Number	Model No.	Gas	Gauges	PSI	Bar	Max Inlet Pressure	Inlet Position	Inlet Connection	Outlet Connection
HL050113	HL1500	Oxygen	2	1500 Bar	105 Bar	300 Bar	Bottom	G5/8 BSP RH	G1/4 BSPT RH
HL050114	HL1500	Nitrogen	2	1500 Bar	105 Bar	300 Bar	Bottom	G5/8 BSP RH	G1/4 BSPT RH
HL050115	HL1500	Inert	2	1500 Bar	105 Bar	300 Bar	Bottom	G5/8 BSP RH	G1/4 BSPT RH
HL050116	HL2500	Oxygen	2	2500 Bar	175 Bar	300 Bar	Bottom	G5/8 BSP RH	G1/4 BSPT RH
HL050117	HL2500	Nitrogen	2	2500 Bar	175 Bar	300 Bar	Bottom	G5/8 BSP RH	G1/4 BSPT RH
HL050118	HL2500	Inert	2	2500 Bar	175 Bar	300 Bar	Bottom	G5/8 BSP RH	G1/4 BSPT RH

Alternative outlet connections available on request

Side inlet position available on request

NEVOC inlet connections also available



**All Hi-Lo regulators comply with all current BS EN Standards.**



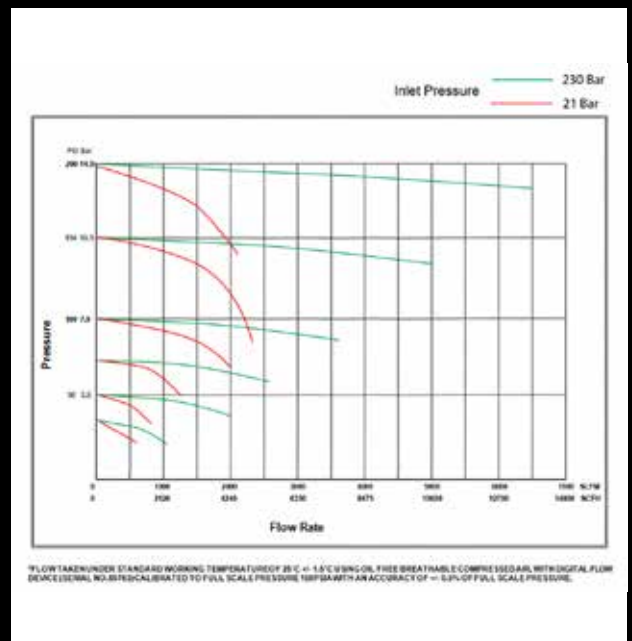
**At Hi-Lo we produce a wide range of specialist steelwork products including nozzles, heavy duty hoses, cutting & scarfing equipment.**

# HL - 14 High Flow Regulator



## Features

- For cylinder or pipeline use
- 300 bar service
- Thermic lancing & heavy duty cutting
- 2 year warranty



Part Number	Model No.	Gas	Gauges	PSI	Bar	Max Inlet Pressure	Inlet Position	Inlet Connection	Outlet Connection
HL060026	High Flow Regulator	Oxygen	2	200	14	300 Bar	Rear	1" BSP RH	G1/2 BSP RH

Side inlet position available on request

Alternative outlet connections available on request

Supplied with 5/8 BSP cylinder adaptor



060

*Certificate Number*

**6346**

*Date First Registered*

**19/05/2010**

*Date Certificate Expires*

**15/04/2016**

*World Certification Services Ltd.  
Custom House, 52A Mersey View  
Merseyside, L22 6QB  
United Kingdom*



## CERTIFICATE OF REGISTRATION

*This Certificate has been awarded to:*

***Hi-Lo gas cutting and welding equipment***

***56 Newhall Road  
Sheffield  
S9 2QL***

*In Recognition of the Organisation's Management  
System which complies with:*

***ISO 9001:2008***

*For the Scope of Activities described below:*

***Design & manufacture of special purpose gas equipment,  
distributors of welding and gas equipment and consumables to  
the industry***

*This Certificate has been awarded by*

**WORLD CERTIFICATION SERVICES LTD.**

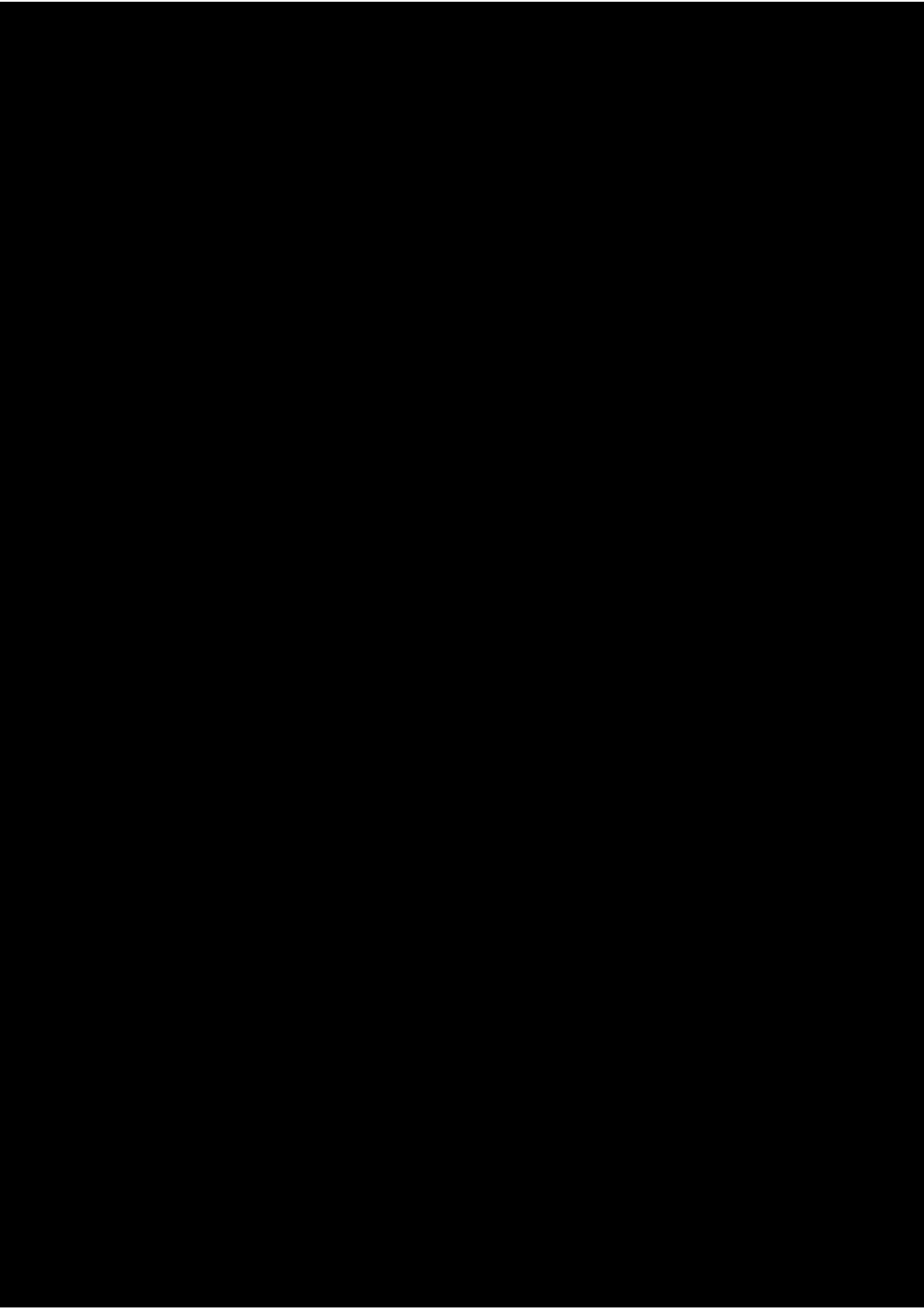
*Issued By:*

*Issue Date:*

**19/04/2013**

*Revision 0*

*The use of the accreditation mark indicates accreditation in respect of those activities covered by UKAS accreditation certificate number 0060 and / or ANAB accreditation certificate number WCS - 99024139*



## Hi-Lo UK Ltd

Address 56 Newhall Road  
Sheffield  
S9 2QL

Telephone +44 (0) 845 241 6980  
Fax +44 (0) 845 241 6981  
Email [sales@hilouk.co.uk](mailto:sales@hilouk.co.uk)  
Web [www.hilouk.co.uk](http://www.hilouk.co.uk)



[www.hilouk.co.uk](http://www.hilouk.co.uk)