

# Holland Lop Colors

Most colors can come in Broken, Solid, Vienna Mark, Vienna Carrier, & White Ears



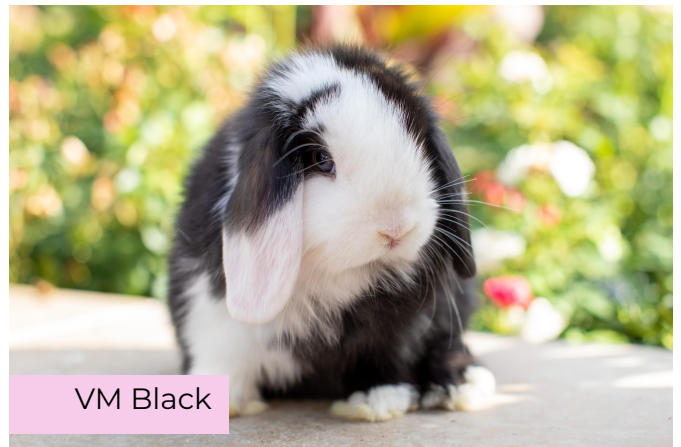
Black/Orange Tri



Black/Orange Harlequin



Orange



VM Black



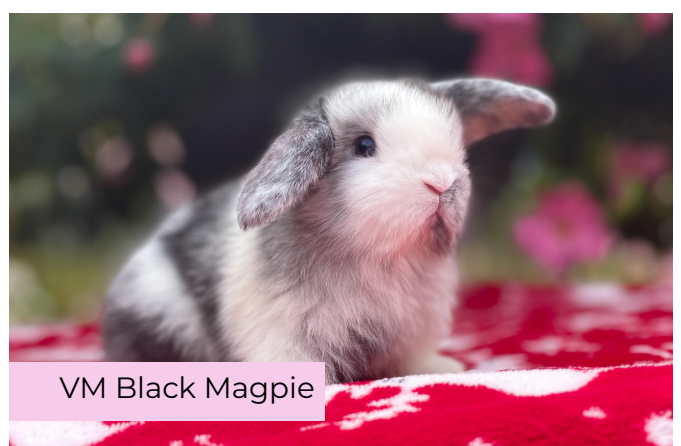
VM Blue/Cream Harlequin



WE VM Blue/Cream Harlequin



Broken Blue Magpie



VM Black Magpie



VM Chocolate



Chocolate



Black Chinchilla



Broken Sable Chinchilla



Lilac



Harlequinized Chestnut



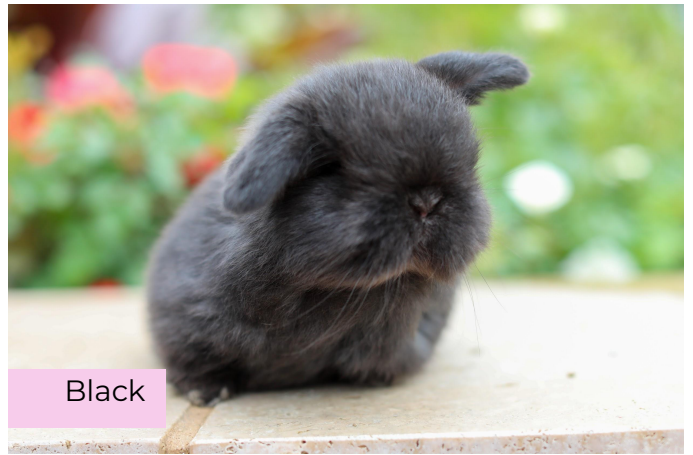
Seal



Blue Eyed White



Sable Frosty



Black