

2023

# Project Management Expert Group



**P . M . E . G**

For Training and Professional  
Development



# The Contents

Chairman Message .....	3
The Organizational Structure of the Company .....	4
Services of Expert Consulting Company .....	6
Engineering Business Consultancy .....	7
Hydraulic designs and studies .....	13
BIM Innovation and Project Management Integration .....	17
Technical and Financial Project Studies .....	35
Binoculars for three-dimensional projects .....	37
Business Development   Strategic Action Plan .....	40
Customer Base .....	41
Previous Contracts .....	44
Study of residential, industrial and commercial schemes .....	50
Team Expertise And success partners .....	60
Establishment of the Project Management Office .....	98
Planning and Project Control Outputs .....	100
Scheduling Management and Project Control .....	101
Cost, Contracts and Risk Management .....	104
Training & Workshops .....	107
PMO Time Scheduling .....	109
PMO Scope of work .....	110
Marketing Consulting Services .....	116



# Chairman Message



## السلام عليكم ورحمة الله و بركاته



Project Management Expert Group has the honor to present you a summary of

Its services in consulting, institutional development and training, and an overview of our proposals

In developing policies for providing advisory services, institutional development, and training

manpower in all fields, whether administrative, technical or skillful through Transfer of knowledge and training workshops that simulate practical

experience in various

domains

Contracting – engineering, legal and accounting consultancy – commercial -industry



...Yours Sincerely

م / حاتم كمال

21  
2021

إستشاري إدارة مشاريع  
و رئيس مجلس الإدارة



## **The Organizational Structure of the Company**

# The organizational structure of the company



## Consulting services

Dr . Khaled Abu Al-Atta  
Project management consultant



## Business Development



## Training and Development

Cost Control Contract Management and risk analysis

Hassan  
Contracts Manager

Mohamed Hassan  
Cost Engineer Contracts &

Basma  
Contract Engineer

planning Follow up & Claims

Mahmoud Hamza  
Claims Specialist

Khaled Mustafa  
Senior Planning Engineer

Ismail Fouda  
Planning Engineer

Construction Management

Ahmed El tayeb  
Planning and follow-up

Geographic Information Systems GIS

Dr. Ahmed Shalaby  
Geographic Information systems Specialist

Rufayda Elhagrsy  
Geographic Information systems Specialist

Business Development

Mohamed Attia  
Development Specialist Business

Projects Management

Walid Al-Behairy  
Project Manager

Mohamed Mamdouh  
Management Projects Specialist

Bishoy  
Projects Management Specialist

Buthaina Nabil  
Project Management Specialist

Graphic Design

Farha Saber  
Graphic Design

Nourhan Tarief  
Graphic Design

Business Architectural

Marc Ghali  
Engineer Architect

Business Structural

Ahmed Shahat  
Civil engineer

Ahmed AlRifai  
Civil engineer

Quality Management

Medhat Management  
Quality Specialist

مبيعات

Norhan Mohamed  
Sales

Documents control

Kholoud Mohamed  
documents Control and operations

Human Resources and Finance

Hasna Farouk

Public Relations

Radwa  
PR Manager

Marketing

Noura Saber  
Marketing Manager

# Services of Expert Consulting Company



**Training and  
workshops  
work**



**Design  
and supervision  
work**



**Projects  
Management  
office  
(PMO)**



**Marketing  
Consultations**



**Human  
Resource  
management  
(HR)**



**Business  
Development**



**Feasibility  
Studies**



**Knowledge  
Transfer &  
Training**



**Building  
Information  
Modeling (BIM)**

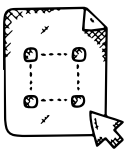


# Engineering Business Consultancy



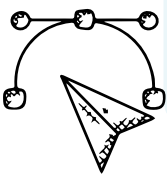
## Design Plans Review

- ◇ In this service, plans are reviewed from all design and engineering aspects, and Shows the defects that may be a barrier and hinder the completion of the project at the time of implementation.
- ◇ We provide a visual report that shows all the points that need reconsideration or direction.
- ◇ We provide feedback that contributes to reducing costs and making the project more efficient.



## Implementation of the Operational Plans

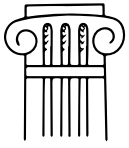
Preparation of all design plans in various disciplines of architectural designs.  
construction - sanitary - electrical - air conditioning - landscaping - urban design  
And urban for compounds, resorts and cities



## implement original plans AS Built drawings

Preparing the final plans for the project according to what has been implemented in reality and all the final modifications that was made as a reference for maintaining operations after that.





## Architectural Design

It presents comprehensive stages, starting with preliminary studies and designs, ending with implementation documents and offering documents.

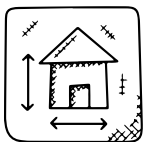
The work depends on the development of architectural concepts and the selection of finishing materials, equipment, machinery and devices.

Architectural spatial analysis, as well as engineering services such as electricity, mechanics, sanitation, and others.

It also includes the preparation and evaluation of bills of quantities, technical specifications and implementation contracts.

Our diverse team of architects allows us to offer a variety of services.

We specialize in the scope of each project to suit your needs.



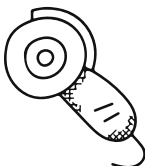
## Structural design

The Structural Design Department provides complete design services from project inception to construction management through

Continuous coordination with architects, contractors and engineers, and we provide design documents for safe and durable structures

We provide economical structural systems suitable for different types of projects with the establishment of structural design

It would complete an architectural design that would facilitate the construction process.

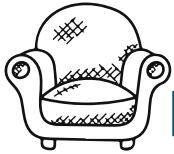


## MEP Design

We combine knowledge of electrical and mechanical engineering in building systems and smart system technology which necessarily guarantees a combination of safety, strength and light. Our technical

Design-driven and sustainable, our electrical and mechanical systems create comfortable environments for occupants.

Economical for owners and efficient with resources. We create a better balance for customers.



## Interior design, Decoration and Furnishing

Offers unique interior designs and decorative works in accordance with international standards from market furnishing elements.

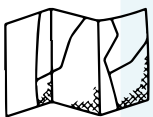
Local, international or specially tailored to meet the needs of the customer and provide a turn-key service whether For private residential buildings, hospitals, hotels and furnished suites, offices, exhibitions business. Design Solutions Space, color, materials, energy and lighting systems are tools for creating healthy environments.



## Supervision and project management

Execution supervision and project management services are provided through highly trained managers with high experience in supervising implementation and calculating quantities for projects by means of the project management methodology followed.

The institution enables them to guarantee quality and accuracy in managing the implementation of projects in accordance with the highest specifications. and in standard timescales.



## Urban planning and land divisions

Studies of land use design and planning, urban and regional planning, development Urban design, residential, industrial and recreational plans, planning and economic development.

And related programs, in addition to doing research, studies and documentation of historical and heritage sites.

We have a proven track record in a variety of disciplines. These include feasibility studies, planning

Cities, public planning, geographic information systems studies, asset assessment, evaluation and impact assessment, social, environmental and heritage preservation.

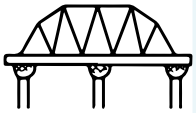


## Environmental design and landscaping

Provides assessment of factors affecting the environment, available materials management systems and risk assessment and services

Specialized in landscaping, designing gardens and other activities (residential/commercial/entertainment) and

Our landscape designers work closely with other specialists to produce more solutions.



## infrastructure

We work to help our customers develop and manage their own means of transportation. We offer integrated solutions.

Integrated and appropriate to local needs and reflect the best international practices in terms of efficiency

reliability and sustainability. Our projects range includes road maintenance, engineering and construction, and includes

Our portfolio of projects includes road maintenance, engineering, construction and transportation infrastructure.

Multidisciplinary projects, relying on specialists from other sectors to ensure the success of each project we are running.

We provide the infrastructure and offer clients with every service they need for a successful project of any size.



## Engineering works and technical support

Provides integrated engineering services in the structural, electrical and mechanical fields.

Technical research and studies, field examinations of the conditions of establishments and value engineering, development of designs

Drawings, specifications, quantities and engineering details according to the latest local and international codes.



## Finance and investment studies

Provides documented support in feasibility studies for all projects, including such Studies analyze investment variables and data, and identify the advantages and disadvantages of development and the best uses for sites, and comprehensive studies to estimate budgets, and financial analyzes of income, returns, profits, and cashflow.

The finances expected from the projects acts as a prelude to making decisions and giving indications of the risk ratios in finance and investment.



## Real estate consultancy

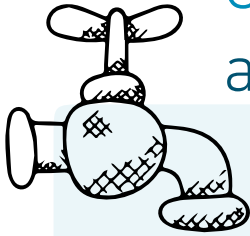
Providing comprehensive integrated solutions related to real estate development for clients and real estate investors.

Developers and specialized companies, including feasibility studies, site selection, development

Lands, buildings and properties, accurate evaluation of real estate, technical arbitration, and financial management of the property.



# Hydraulic designs and studies



Our services also prepare designs and hydraulic studies

- ◆ Design of water and sewage networks
- ◆ Design of water stations
- ◆ Design of sewage plants, lifting stations and expulsion lines
- ◆ Groundwater Level Reduction Design
- ◆ Study of underground dewatering
- ◆ Design works for the rural villages development project



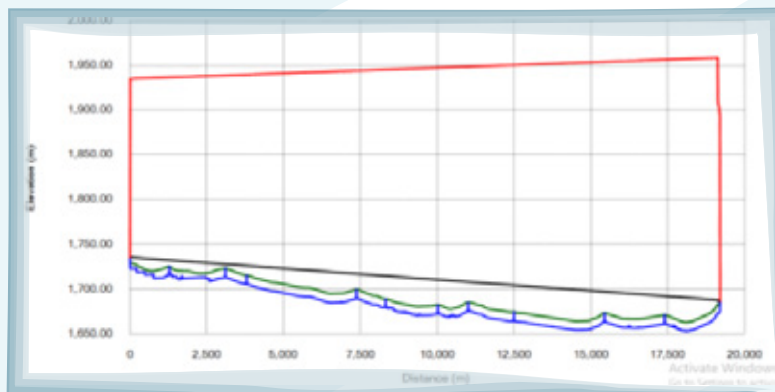
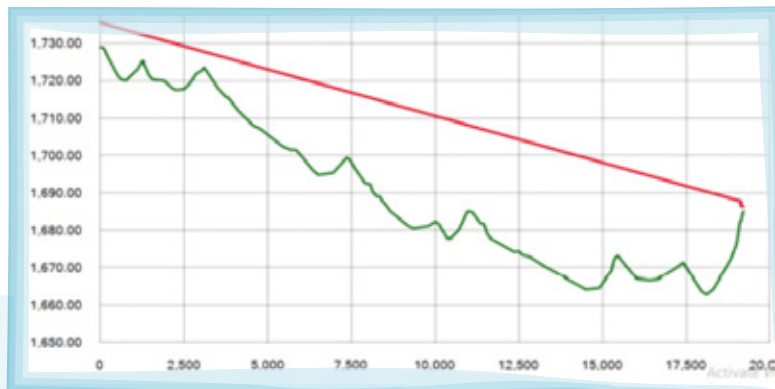
Figure 5: Line A Hydraulic Grade Line at Scenario 2



Figure 5: Line A Hydraulic Grade Line at Scenario 2

Sample Study of a Treated Water Network

# Example of hydraulic studies



Model for the study of water hammer

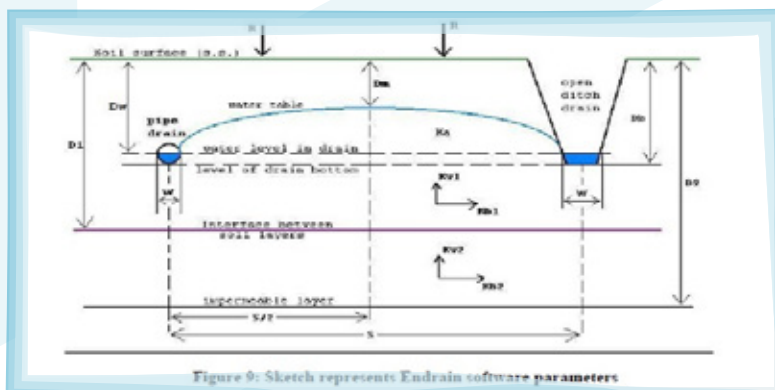


Figure 9: Sketch represents Endrain software parameters

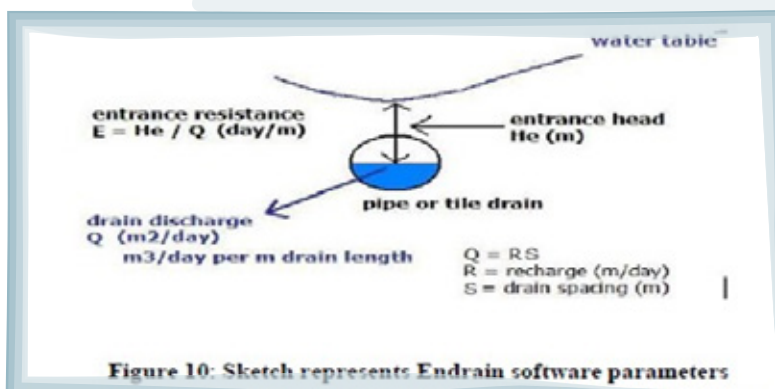
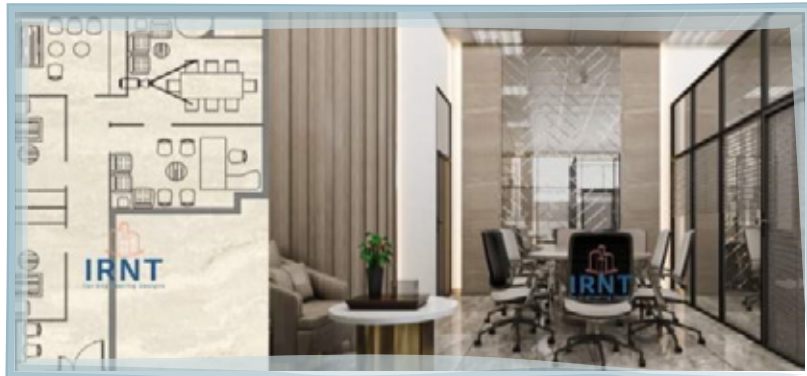
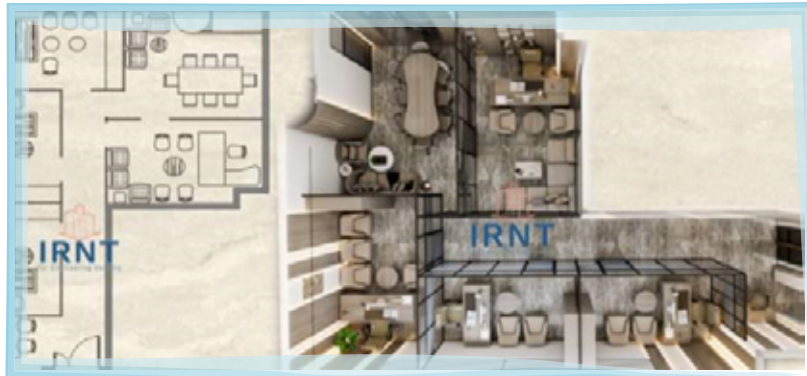


Figure 10: Sketch represents Endrain software parameters

Model for the study of lowering the groundwater level



## Example of team designs



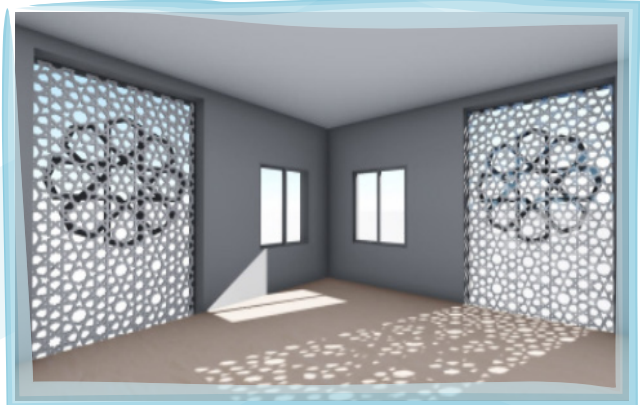
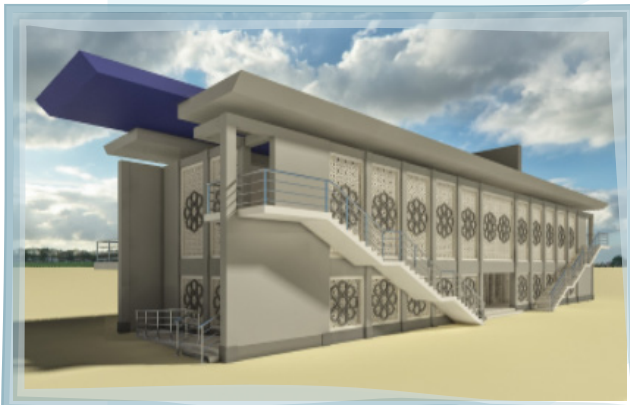
Model for architectural designs



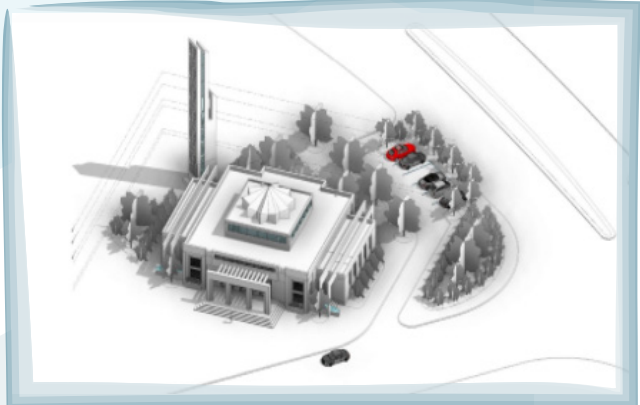
Model for architectural designs



## Example of team designs



Model for architectural designs



Model for architectural designs





**Expert PME**  
**Redefining Construction Excellence**  
**Through BIM Innovation and**  
**Project Management Integration**



# The Main Stages of Completing the Construction of the Office



## Introduction

In an era defined by technological progress and digital transformation, Expert PME stands at the forefront of innovation in the dynamic field of Building Information Modeling (BIM). Beyond just a company, Expert PME is an embodiment of the potent fusion of technology, creativity, and precision. With a journey characterized by relentless learning, adaptation, and mastery, we have harnessed the power of BIM to reshape the landscape of project conceptualization, design, and execution.

### The Power of BIM

- ◇ At the heart of Expert PME's core philosophy lies an unwavering conviction in the transformative capabilities of BIM. BIM isn't confined to a collection of software tools; it's a strategic approach that embraces collaboration, accuracy, and sustainability. It empowers us to construct digital replicas of physical projects, providing an immersive understanding of every facet before the ground is broken.

### A Spectrum of Technical Mastery

- ◇ The trajectory of Expert PME's journey in the realm of BIM has been propelled by an unswerving dedication to technical mastery. Our services defy conventional boundaries, encompassing an array of specialized domains that underline our multidisciplinary prowess

### Dynamic Parametric Modeling

- ◇ Our proficiency in parametric modeling transcends conventional limits. We have elevated this technique into an art, creating 3D models that are not static entities but living organisms capable of
- ◇ Evolving alongside design changes.



# The Main Stages of Completing the Construction of the Office



## Introduction

### Comprehensive Structural Analysis

- ◇ We've elevated structural analysis to a craft, not just a science. Our cross-functional teams combine architectural vision with engineering ingenuity, ensuring that structures stand not just as architectural marvels, but as testaments to functionality and safety.

### Seamless MEP Coordination

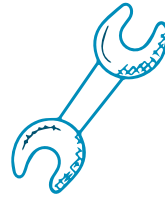
- ◇ The intricate interplay of mechanical, electrical, and plumbing systems demands a meticulous touch. Expert PME excels in seamless coordination, mitigating conflicts, and orchestrating the harmonious integration of these critical systems.

### Time-Integrated Construction (4D)

- ◇ Our mastery over 4D modeling transcends mere visualization. We orchestrate a symphony of construction by synchronizing project timelines with 3D models, empowering stakeholders to visualize the project's temporal evolution.
- ◇ visualize the project's temporal evolution.



# The Main Stages of Completing the Construction of the Office



## Introduction

### Cost Intelligence and Management (5D)

- ◇ BIM's scope extends into cost optimization. Our models are enriched with real-time cost data, enabling stakeholders to exercise budget control and make informed financial decisions throughout the project lifecycle

### Clash Anticipation and Resolution

- ◇ In a realm where precision is paramount, our clash detection methodology excels. By identifying and preempting clashes virtually, we fortify project timelines and budgets against potentially catastrophic conflicts.

### Green BIM for Sustainable Futures

- ◇ Sustainability isn't a trend; it's a commitment. Our Green BIM philosophy leverages BIM's analytical capabilities to assess environmental impacts, optimize energy efficiency, and minimize the carbon footprint, advancing the cause of sustainable construction practices.

# Project Management Synergy:

## Bridging BIM and Project Management:

◇ However, what truly sets Expert PME apart is our holistic understanding of the profound synergy between BIM and project management. BIM isn't just a tool in isolation; it's an inseparable part of our overarching project management strategy. Our extensive expertise in project management acts as a bridge between visionary design and practical execution. By seamlessly integrating BIM with project management methodologies, we forge a dynamic partnership that propels projects toward success. Our project managers leverage real-time data from BIM models to make informed decisions, monitor progress, allocate resources optimally, and mitigate potential risks. This synergy ensures that our BIM solutions go beyond visualization; they manifest as tangible project outcomes.

### ◇ **A Culture of Collaboration and Innovative Transformation:**

Expert PME's odyssey extends beyond technical excellence. It's about nurturing collaboration and fostering transformative innovation. Through shared BIM models, we dismantle the barriers separating architects, engineers, contractors, and stakeholders, allowing their collective brilliance to shine through. This collaborative ecosystem doesn't just minimize errors and conflicts; it amplifies the creative potential inherent in every project.



# Showcasing Excellence in Every Endeavor:



- ◆ **Ascending Skies:** Our prowess materialized in a soaring skyscraper, defying not only physical gravity but also design norms. Our BIM solutions orchestrated the synchronization of disparate design elements, culminating in a fusion of engineering marvel and aesthetic grandeur.
- ◆ **Reviving Urban Ecosystems:** In an age of urbanization, we undertook the revival of an urban ecosystem. Through BIM-infused urban planning, sustainable infrastructure, and vibrant green spaces, we revitalized an area, setting a precedent for sustainable urban living.
- ◆ **Innovating Healthcare:** The healthcare domain demands precision and functionality. Our BIM interventions streamlined the creation of a cutting-edge medical facility, merging advanced technology seamlessly with healing environments.
- ◆ **Your Collaborative Partner in Transformation:**  
Expert PME doesn't merely offer BIM services; we extend a collaborative hand that propels your projects to new heights of excellence. We don't just comprehend your vision; we translate it into digital masterpieces that exceed expectations. Our commitment isn't to construct structures alone; it's to craft legacies.

## **SCHEMATIC DESIGN PHASE:**

- ◇ Building 3D render visualization.
- ◇ Building interior view.
- ◇ Building exterior view.
- ◇ Content libraries for further use.

## **Design DEVELOPMENT PHASE:**

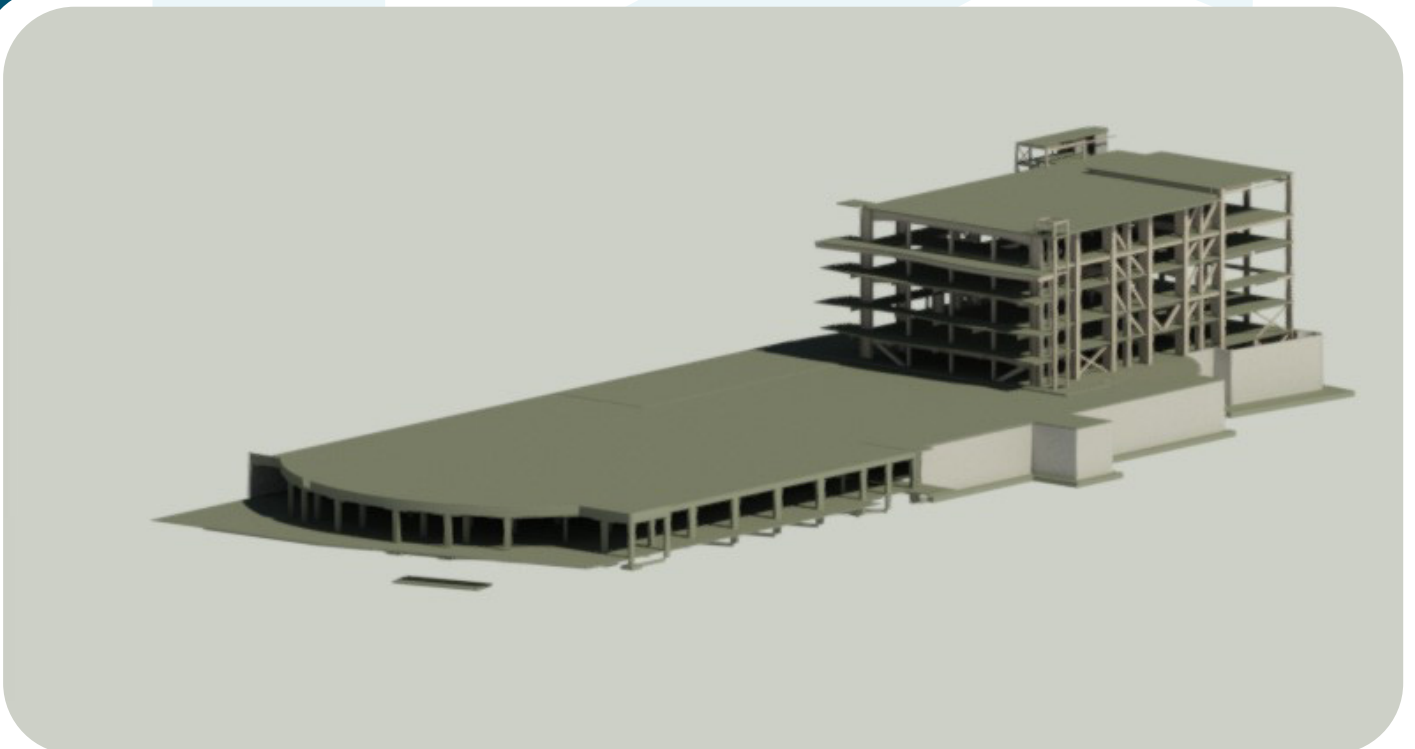
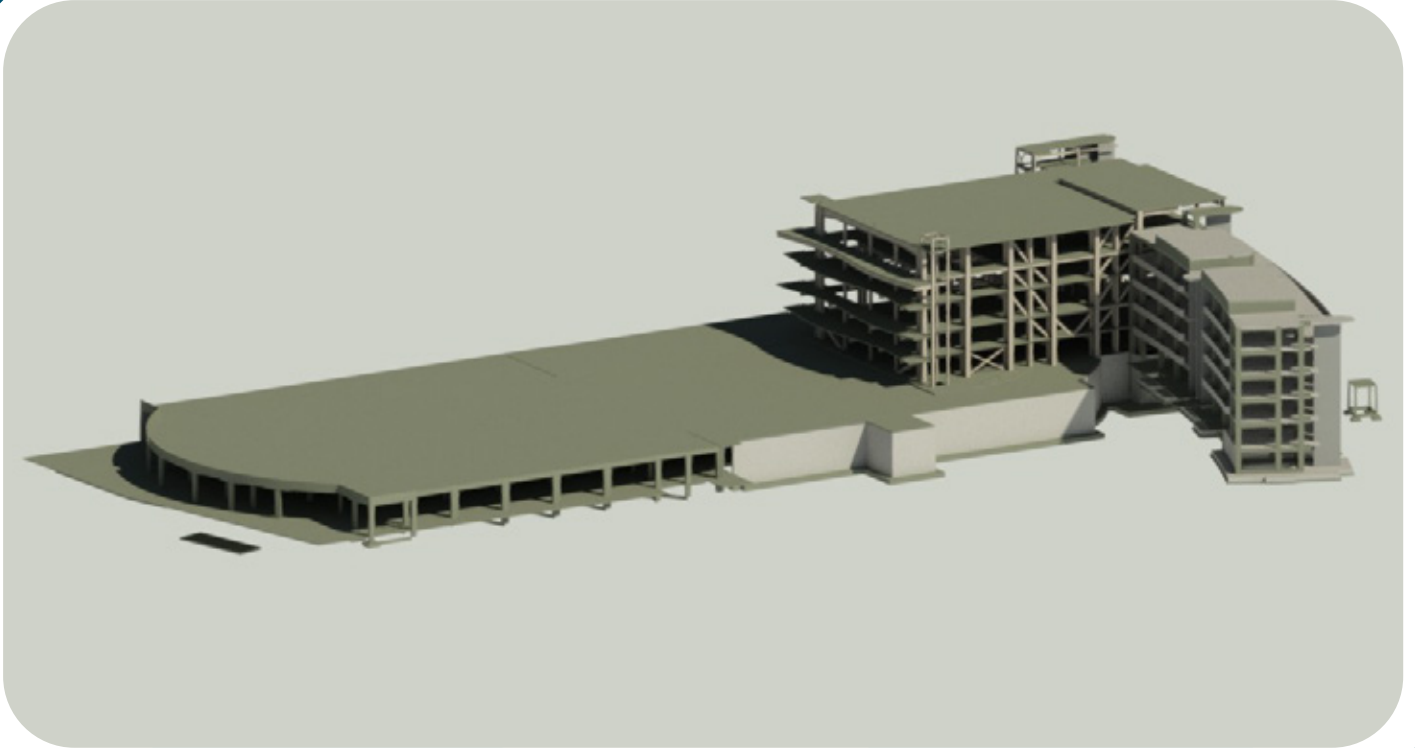
- ◇ FLOOR PLANS
- ◇ Schematic building descriptions
- ◇ Boq and time scheduling.

## **CONSTRUCTION DOCUMENTATION PHASE:**

- ◇ Building sections.
- ◇ Staircase details.
- ◇ Construction detail.



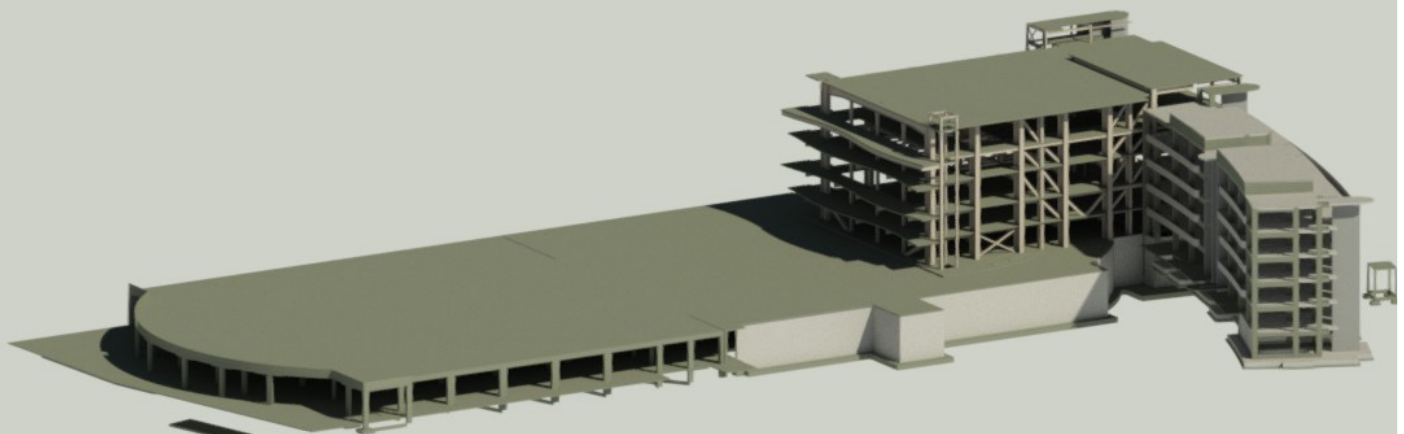
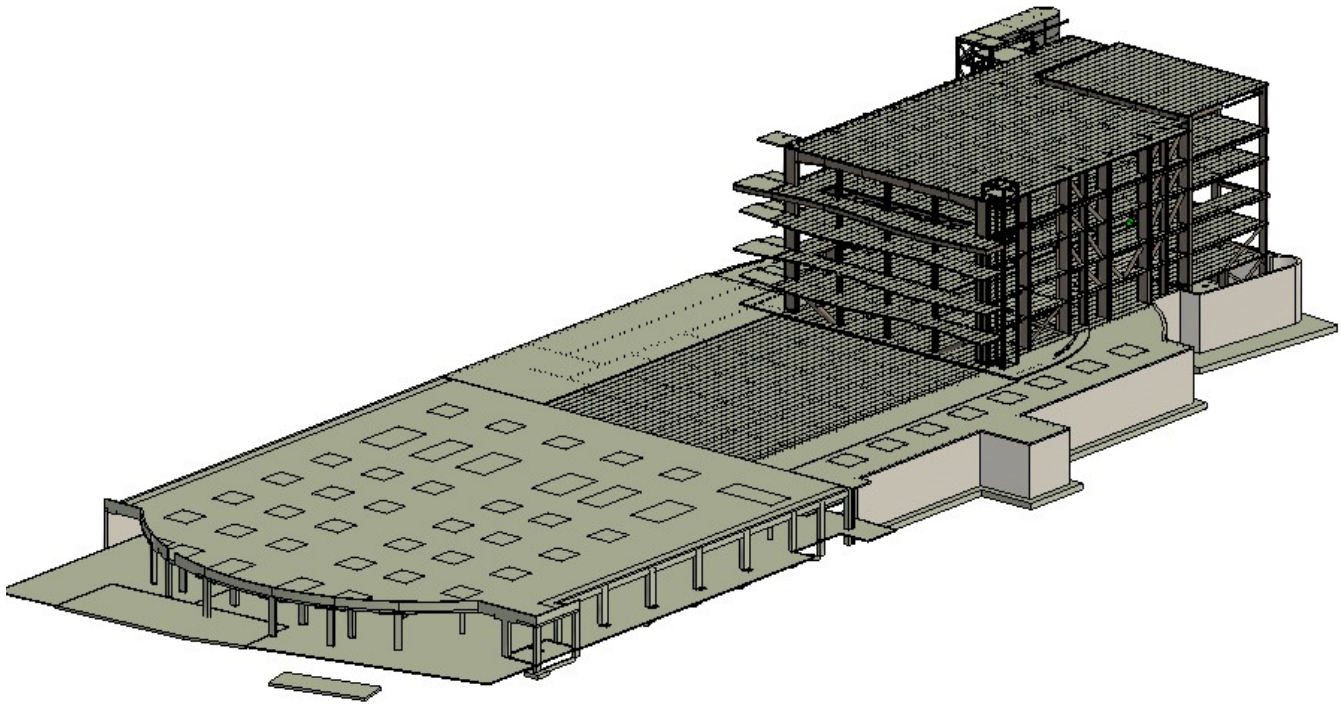
# Structure Works





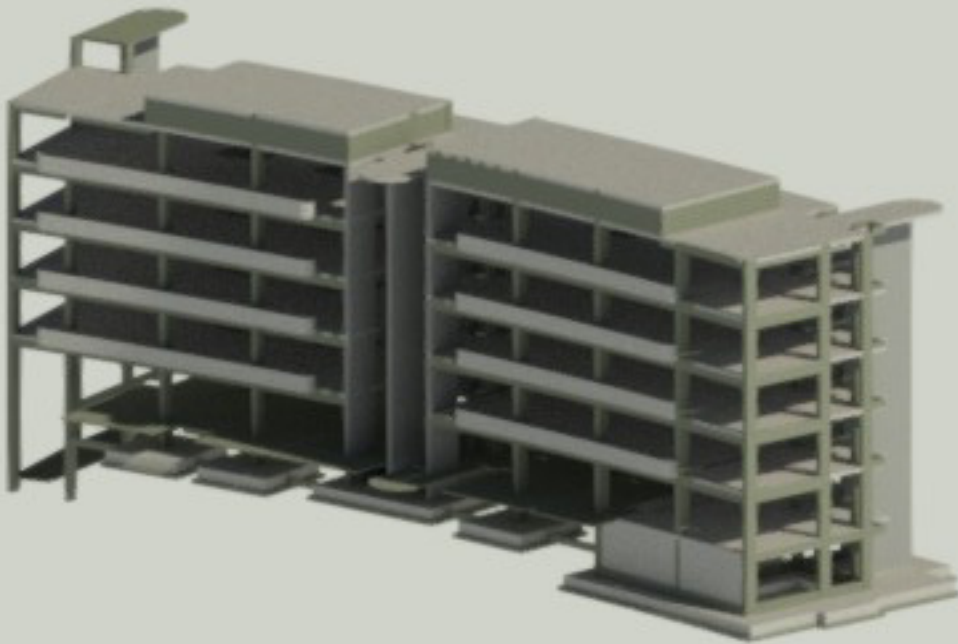
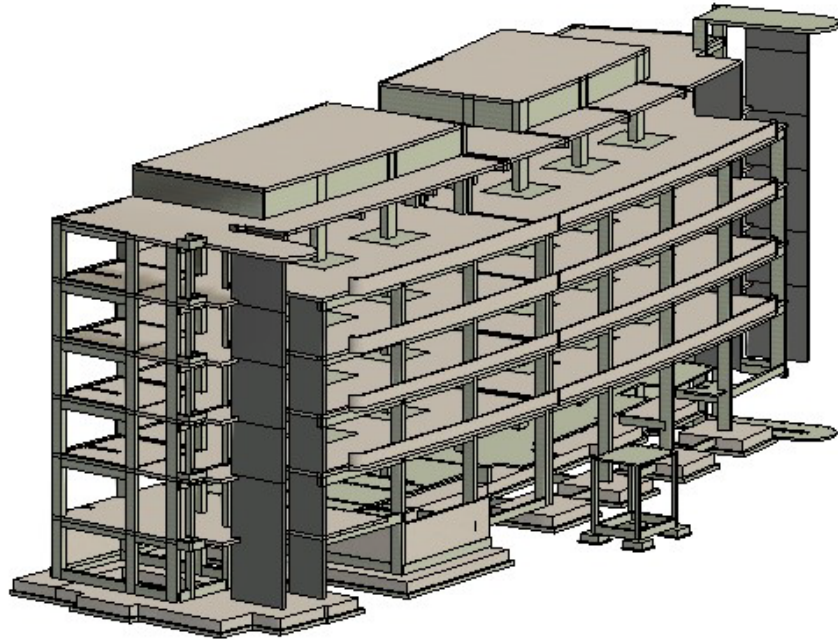


# Structure Works



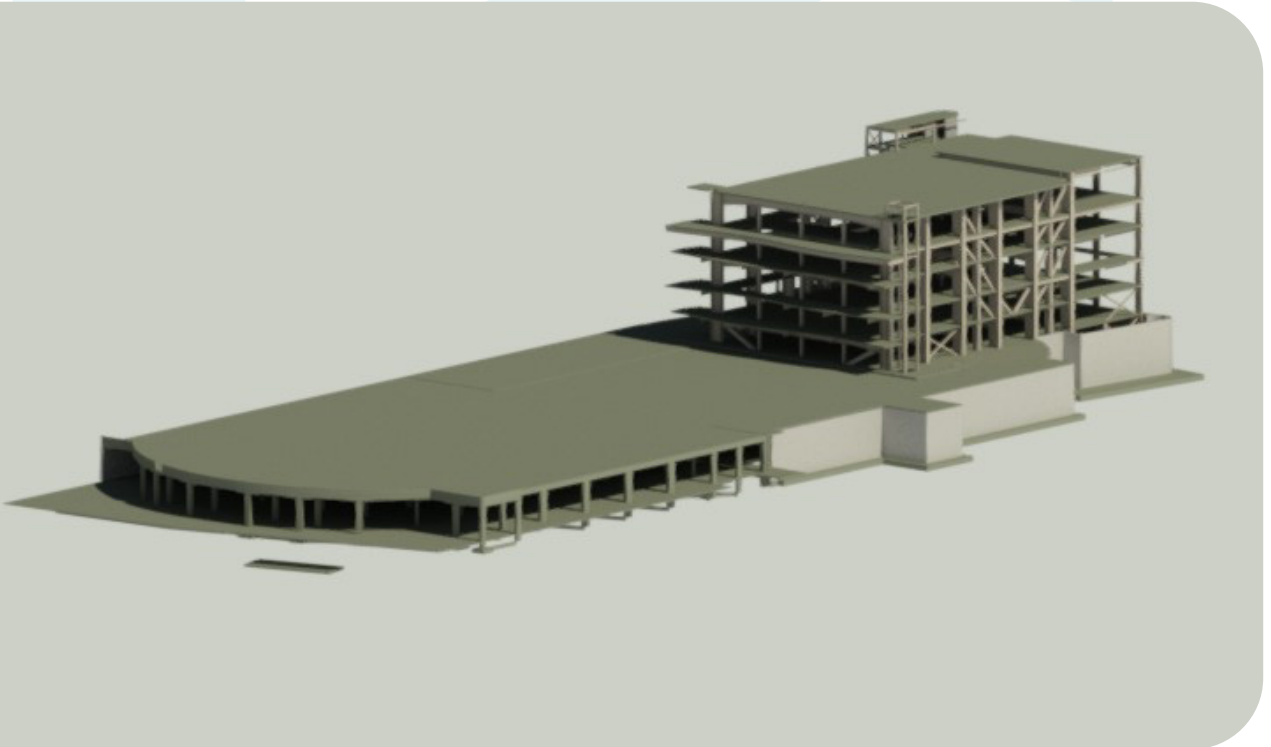
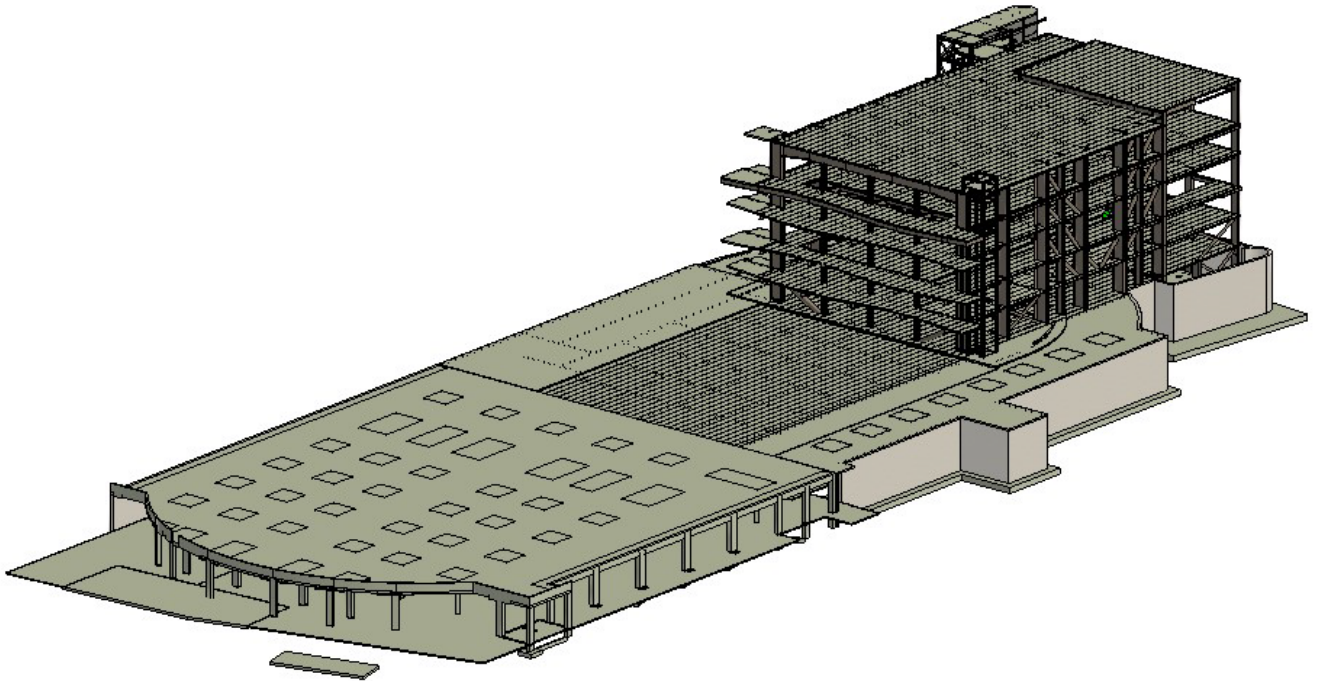


# Structure Works



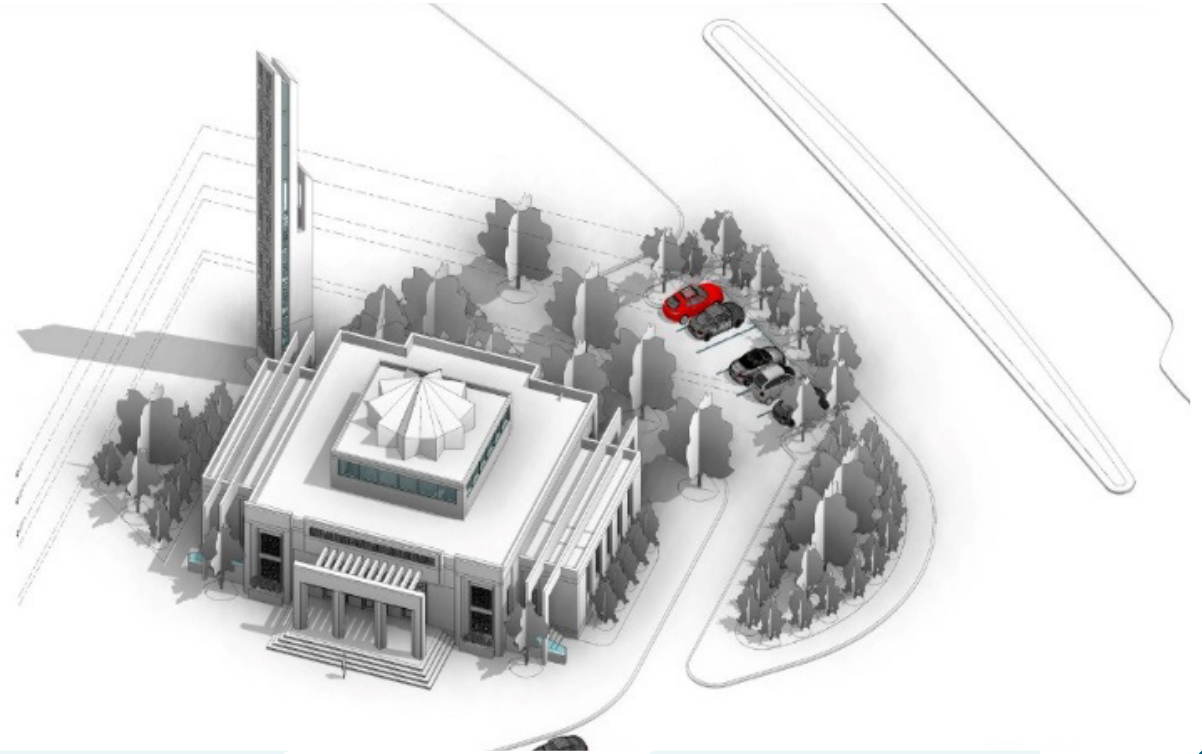


# Structure Works





# Structure Works



## **Detailed Construction/Working Drawings for structures**

- ◇ Preparation of perfect 3D Models for the Complete Structure from the Structural and Architectural
- ◇ Shop Drawings of Beams, Joists, Columns, Stairs , Lintels, Roof Frames, Shelf Angles, Bearing Plates, Frames, Wall Partition Supports and Bracings.
- ◇ Accurate Quantity Take-Off and Cost Estimates for Bidding, Procurement and Construction planning
- ◇ 3D Modeling and Production sequences / Erection Drawings for Construction Management and Visualization

#### ◇ **Code 300 Design Revit:**

Revit is a three-dimensional design and modeling software used in the architecture and construction industry. It helps engineers and architects create accurate 3D models of engineering and architectural projects. Code 300 refers to services related to preparing designs using Revit. This includes creating 3D models and documenting architectural and engineering details using this software.

#### ◇ **Code 400 detailed drawing and Shop Drawing:**

Shop Drawings are detailed drawings prepared to show the precise details and information needed to construct project components accurately. These drawings are created based on the primary design drawings and illustrate how architectural and structural design details can be understood and implemented by construction contractors. Code 400 refers to services related to preparing and drawing Shop Drawings.

#### ◇ **Code 500 As-Built drawings** are prepared after the completion of the entire project. They are used to document the actual condition of the project after construction, including any modifications and changes made during the construction process. These drawings are important for future maintenance and accurate documentation of the project. Code 500 refers to services related to preparing and documenting As-Built drawings.













# Technical and Financial Project Studies



## Technical Envelope Preparation



- ◇ Preparation and preparation of the project schedule
- ◇ Processing the file of labor and equipment
- ◇ Preparation of a quality control plan for the project
- ◇ Preparation of the EHS plan for the project
- ◇ Preparing the organizational structure of the project
- ◇ Preparation of the executive plan

## Project Receipt



- ◇ Verification of project documentation
- ◇ Send Inquiries (Inquiries) if data is not available Study specifications and project requirements
- ◇ Define the scope of the project

## Preparation of the financial envelope



- ◇ Send inquiry requests to our suppliers to price some items
- ◇ Study the direct and indirect costs and profits of the project
- ◇ Making a planning budget for the project

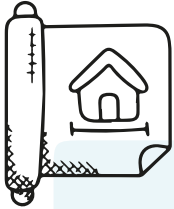
## Project Follow-up



- ◇ Update work on the project to follow up the work and print reports.
- ◇ Update for finished and remaining work until the time to proceed

# Binoculars for three-dimensional projects

## ◇ Building Information Modelling ◇

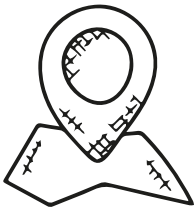


### One of our services is also the use of BIM technology Building Services Modeling

- ◇ Accurate inventory of materials before the start of construction, and when making a modification in the design, the update is made in Automatic inventory.
- ◇ Solving the problems of communication between the design parties from architect, structural, electromechanical and anyInvolved in the design and implementation process, these programs facilitated familiarity with the details of the project by everyone and share the different edits among themselves, to avoid any conflict that may cause problems or errors in execution
- ◇ The design is good for the customer, so the final picture of the building reaches him and realizes its details, without being forced to study architectural or construction drawings that he may not understand, so he can express his opinion and modify on a design Harmony between projections and sectors, and involving every single aspect in one detailed file.
- ◇ Visualizing the difference of what was built from the original design as a result of work on site, forcing engineers To make a different board (As Built) after the work is finished, currently what is designed is what will be implemented.

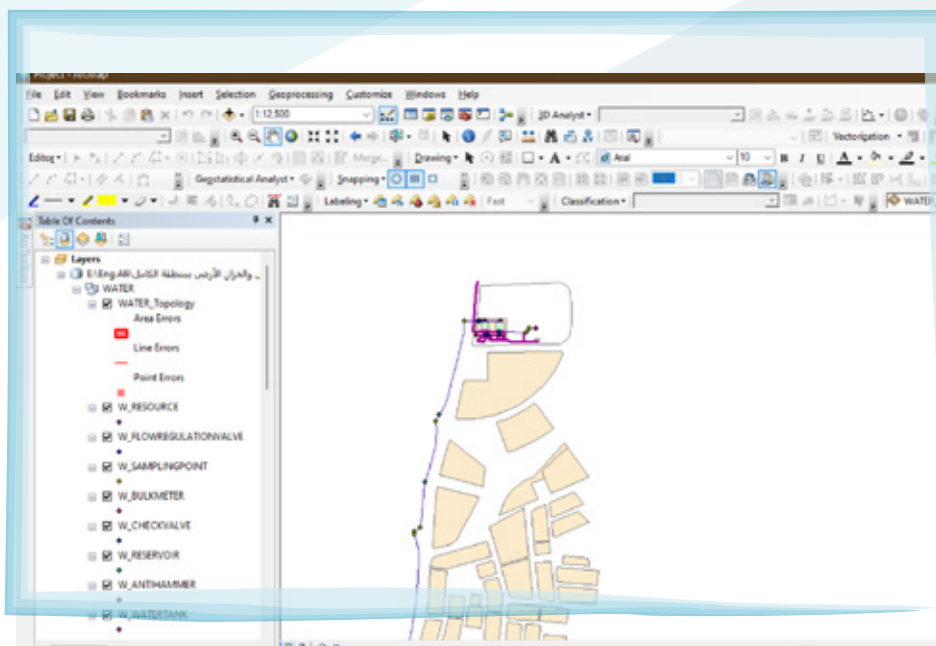


# Geographic Information System



One of our services is also assisting in the decision-making Environmental impact assessment of major projects

- ◆ Build and store spatial and operational information for infrastructure projects using information systems Geographic GIS
- ◆ Analyze and sign the data available to decision-makers to achieve the best development options Using GIS-MCDA
- ◆ Calculate the resilience of projects against future climate variables such as floods and floods using Specialized simulation programs & Numerical models
- ◆ Assess the environmental impacts of major projects EIA and compare different optimization scenarios using Numerical models

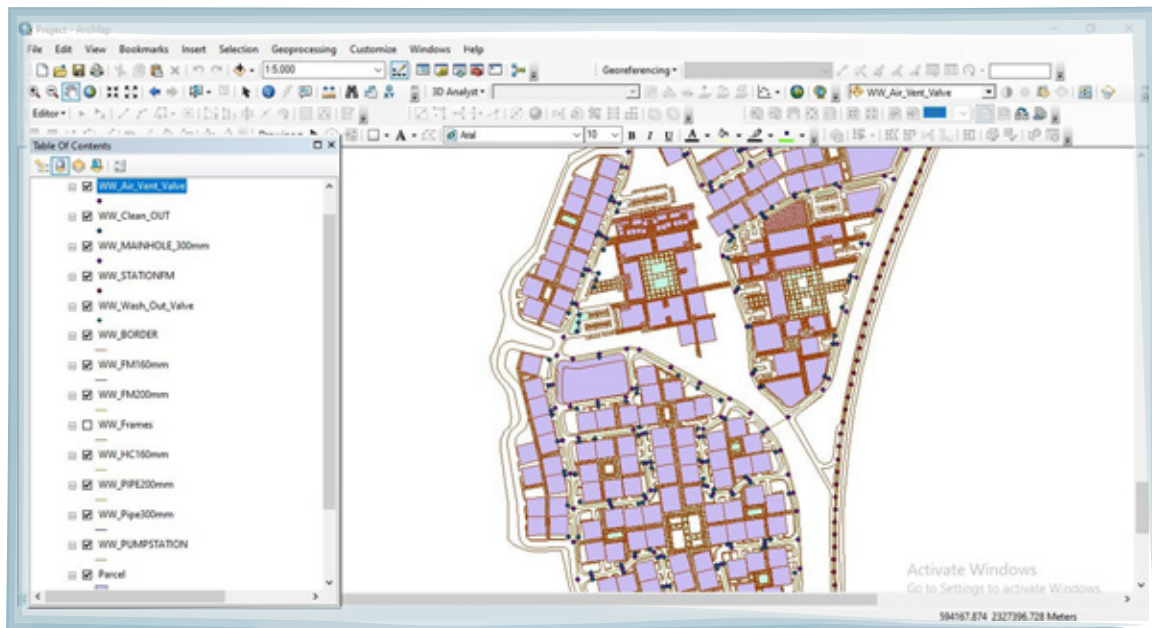


Sample Signing Spatial and Executive Information



# Geographic Information Systems

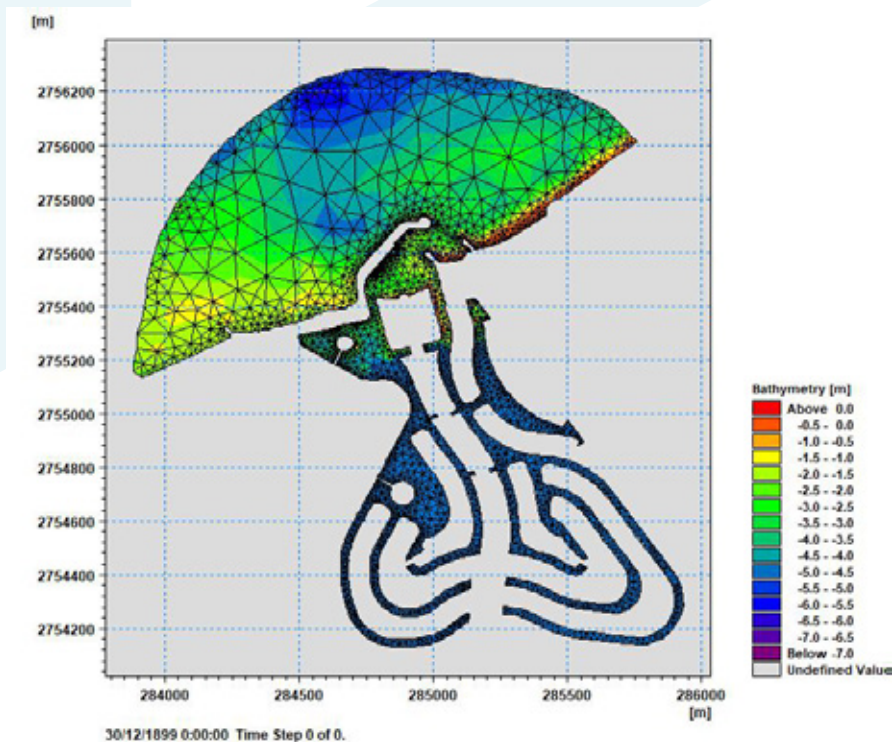
## Example (GIS)



Building a geographical database for the project of implementing the extension of sewage works  
Al Beyda Center Bahrah Governorate Kingdom of Saudi Arabia



## Example of Environmental Impact Assessment



Environmental Impact Assessment for Ghantoot Resort Project, UAE

99

We are passionately interested in providing plans, suggestions and tips  
To develop your company and reach the top

66



## Existing Companies

---

We will do a comprehensive study from the first step to the bottom, from the analysis of the idea of Project to determine goals and the public and track the stages of the project until reaching the steps. Success and achievement of goals.



## Emerging Companies

---

We will do a comprehensive study, from the analysis of the ideas of Project to explore the competitive advantages that might be provided and analyzing the blind spots in the market, initiating a plan to be able to turn them to your company's profitable interest.





# Out of Egypt



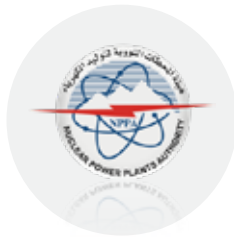


# In side Egypt





# In side Egypt



## Previous Works of Expert Company

- ◇ Supervising the design and implementation of the rural villages development project in the center of Biba in Beni Suef (Sidds Village Council - Hila Village Council - Biba Island Village Council) - Decent Life - Contractor Tanta Motors Contracting Company.
- ◇ Supervising the design and implementation work for the development of rural villages in the center of Kom Ombo in Aswan (Kajoj - Abbasiya - Kfour Kom Ombo - Salwa Bahri - Atmour) - contractor Tanta Motors Contracting Company - client Ministry of Housing, Utilities and Urban Communities Central Agency for Reconstruction.
- ◇ Supporting the technical office work of the Golden Coast project in Sharm El Sheikh - implemented by City Stars Real Estate Company
- ◇ Supervising the design and implementation of the project Development of rural villages in the center of Biba in Beni Suef (Sixth Village Council - Hilia Village Council - Biba Island Village Council) – Hayah Karema Government project - Contractor Tanta Motors Contracting Company.
- ◇ Supervising the implementation of the ground stacking tank project within the permanent feeding project and the 14th district in New Obour City - Contractor Tanta Motors Contracting Company.
- ◇ Projects studies and designs for plant and animal quarry projects for 6 sites in the Kingdom for Sajal Office.
- ◇ Review of the plans of the tissue culture laboratory project in Riyadh for Sajal Office.
- ◇ Participated in designing several villas of two floors in Riyadh, Kingdom of Saudi Arabia.

Company Name  
(Client)

## Expert Contracting Scope

Duration

Tanta Motors  
Contracting  
Sector

Logo



- ◇ Set up company-specific standard rates.
- ◇ Preparing a project management manual for the company.
- ◇ Prepare company-specific work guidelines.
- ◇ Establishing a project management office.
- ◇ Creating a cost management system starting from the study of bids and contracting and the process of planning and control of costs and extracts  
Supplies, needs, warehouses, financial management and management  
Documents up to the stage of closing projects and preparing final reports and  
Lessons learned. Creating a SEMINAR learned from previous projects, and Benefit from those lessons for continuous improvement of methodologies.  
Develop and establish standards for project management, policies and procedures  
and templates and standardization of those standards for project management within the company  
Develop project management processes to build a unified methodology.  
Monitoring compliance with project management standards and policies  
and its procedures, and templates by examining projects  
Establish a shared resource management system across projects.  
Providing training and workshops for project management personnel  
Prepare a plan to manage communication with projects.  
Supervising project management functions and following up on the implementation of the field of project management in executive positions and reporting periodicals on executive position, business progress and management  
Providing technical support through evaluating the monthly performance of projects  
Preparing a performance measurement board for senior management Dashboard.  
Preparing guidelines and recommendations to the company's project management according to the methodologies of the International Project Management Institute (PMI) for his experience and accreditation from the same institute.  
Manage the integration of the scope of work of the Project Management Office by communicating between the two parties to the contract and acting as a representative.  
Measuring project performance using systems, tools and technologies Occasion.

From

September  
2019

To

Present

Company Name  
(Client)

## Expert Contracting Scope

Duration

Tanta Motors  
Contracting  
Sector

Logo



- ◇ Review and approve project data for lessons learned from previous projects, and take advantage of those
- ◇ lessons to order Continuous improvement of project management methodologies and processes in the Company.  
Establish a system for identifying, assessing and managing risk response to reduce expected risks in first-party projects and tracking plans
- ◇ Project, financial progress, study of constraints and recommendations of the Project management office  
Creating a system that supports the management and analysis of the scope of the first party's business to develop the project areas and objectives, with the participation of all owners Relevant interest and PMO recommendations.  
Review and approve project management standards and policies  
procedures, templates and standardization of those standards for project management
- ◇ Within the company and developing project management processes according to methodologies International Project Management Institute (PMI) for its expertise and accreditation  
From the same institute and the recommendations of the Project Management Office.  
Relationship management with senior management and PMO Manager and all stakeholders.  
Preparing a plan for managing communication with projects and preparing and maintaining plans project and status reports weekly and monthly and create and maintain  
Comprehensive project documentation.  
Providing training and workshops for project management personnel.  
Coordinate project plans and follow up on projects implementing the plans  
operations in cooperation with the concerned units.  
Follow up the project implementation procedures and the actual completion rates according to Planned .  
Analyze all data and information necessary to measure indicators,  
Operational performance and formulation to follow up the progress of projects.  
Preparing, analyzing, negotiating and identifying changes  
And additions in agreements with suppliers and consultants and customers.  
Preparing technical reports and following up on achievement reports and submitting them to the Center  
How to keep track of work plans and resource consumption processes  
Financial, material and technical projects and reporting of Coordination between the executing authorities of the projects and the various entities who are Concerned (related to project management)

From

September  
2019

To

Present

**Company Name  
(Client)**

**Expert Contracting Scope**

**Duration**

**Contractors  
Arabs**

Logo



- ◇ Review construction and supply contracts and analyze contracts.
- ◇ Preparing and reviewing until the approval of the time programs and their follow-up and monitored.
- ◇ Follow-up implementation in the field of project management in locations Executive and provide periodic reports on the executive position and progress Business and claims management to preserve the contractor's right and manage
- ◇ Abstracts according to those reports.
- ◇ Preparing, reviewing and evaluating change orders.
- ◇ Contractor evaluation.
- ◇ Quantity inventory and shop drawings.
- ◇ Preparing standard rates for the company.
- ◇ Make a schedule for the Rufiji Hydropower project

From

June 2018

To

November  
2019

**Petrojet**

Logo



- ◇ Preparing the mechanism of work of the Risk Management Office.
- ◇ Prepare guidelines and recommendations for action on how to avoid risks and Work lessons learned from projects.
- ◇ Training personnel on how to operate the risk management office.

From

May 2018

To

November 2019

**City Stars  
Construction**

Logo



- ◇ Work was done in the Golden Coast project in Sharm El Sheikh on (16) contracts in the project management to do the following: -
- ◇ The construction method worked for the entire Golden Coast project.
- ◇ Make your own schedule (Golden Coast Project).
- ◇ Providing cash flow strategies for the project at all stages.
- ◇ Preparing (5 claims) to extend the time period of the project.
- ◇ Preparation of (4 claims) for financial compensation. Allocate resources to the project schedule.

From

March 2016

To

May 2017

**Al Rajhi  
Construction  
Reconstruction**

Logo









- ◇ Preparing the technical and financial offer for 19 projects.
- ◇ All inventory works for the project of establishing a data center in Dammam and Jeddah For Huawei.
- ◇ Study the data center project to calculate the costs and profit from Project.
- ◇ Make periodic updates on the schedule of the company's projects and prepare the necessary reports to be presented to senior management to follow up the progress of Business.
- ◇ Prepare a claim to extend the duration of implementation of one of the company's projects.

From

June 2022

To

December 2022

Duration	Expert Contracting Scope	Company Name (Client)
<p>Ramco Company</p> <p>Logo</p> 	<ul style="list-style-type: none"> <li>Resourcing schedule setup for 4 work packages for Qiddiya project</li> </ul>	<p>From</p> <p>June 2022</p> <p>To</p> <p>August 2022</p>
<p>Al Sarhan Company</p> <p>Logo</p> 	<ul style="list-style-type: none"> <li>Preparing a detailed schedule for the company's projects.</li> <li>Make weekly and monthly updates on projects and prepare Necessary reports.</li> </ul>	<p>From</p> <p>February 2023</p> <p>To</p> <p>present</p>
<p>PPP Company</p> <p>Logo</p> 	<ul style="list-style-type: none"> <li>Make weekly and monthly updates on projects and prepare Necessary reports.</li> <li>Preparing a revised baseline schedule.</li> <li>Holding workshops for the company's employees to introduce them to project management.</li> </ul>	<p>From</p> <p>August 2022</p> <p>To</p> <p>present</p>
<p>Zood</p> <p>Logo</p> 	<ul style="list-style-type: none"> <li>Preparing the project schedule.</li> <li>Preparing the necessary plans for the project (quality, health and safety ,Risk Management )</li> <li>Setting up the performance indicators panel and following up on the workflow.</li> <li>Preparing weekly and monthly report forms.</li> <li>Prepare a project management manual.</li> </ul>	<p>From</p> <p>September 2021</p> <p>To</p> <p>December 2021</p>
<p>بصمة</p> <p>Logo</p> 	<ul style="list-style-type: none"> <li>Providing technical support in structural and electrical designs and mechanical.</li> <li>Preparing technical and financial envelopes to apply for competitions.</li> <li>Preparation of structural and architectural plans and design of the landscape and the electricity and air conditioning and plumbing plans needed to create a villa And a break.</li> </ul>	<p>From</p> <p>July 2022</p> <p>To</p> <p>August 2022</p>
<p>Dorra Company</p> <p>Logo</p> 	<ul style="list-style-type: none"> <li>Technical support in preparing project plans from (change plan project charter, preservation and confidentiality of information and quality)</li> <li>Preparation of the governance document.</li> <li>Preparing weekly reports and following up the project with the authorities Responsible .</li> <li>Preparing the project schedule.</li> </ul>	<p>From</p> <p>March 2022</p> <p>To</p> <p>August 2022</p>



Duration

Expert Contracting Scope

Company Name  
(Client)

SETS Company

Logo



- ◇ Participate in the study of cash flows for company projects contracting with the aim of obtaining facilities and bank loans.
- ◇ Follow up the projects of some government agencies and prepare the necessary reports to be presented to senior management to follow up on the progress of work Set up a dashboard.  
Dashboard to view projects and their statuses.
- ◇ Preparing the plan for establishing the Project Management Office.
- ◇ Prepare a plan for the current situation.
- ◇ Preparation of the governance document.
- ◇ Preparing methodological manuals for project management.
- ◇ Preparing guidelines for project management.
- ◇ Prepare monthly reports.
- ◇ Follow up on periodic meetings and take minutes of monthly and weekly meetings.
- ◇ Preparation of the operational model for the PMO.

From

December 2021

To

present

Urban Square

Logo



- ◇ Prepare schedules.
- ◇ Preparing technical and financial envelopes for applying for competitions.
- ◇ Providing technical support in the work of geographic information systems (GIS)
- ◇ Providing technical support in the preparation, analysis and negotiation of contracts
- ◇ Identify changes and additions in agreements with suppliers , consultants and clients.
- ◇ Preparation of time and financial claims as a result of additional work.

من

March 2022

إلى

December 2022

Sigal Arabia

Logo



- ◇ Design works (structural - architectural - mechanical - electricity) Comprehensive works of 3D planning for architectural design and issuance Bills of quantities and Stumbling works for the animal quarry project Prince Nayef bin Abdulaziz Airport.
- ◇ Presenting the work of 3D perspectives for architectural design and issuing Bills of quantities and insolvency work for the tissue laboratory project in Riyadh.
- ◇ Architectural design of a mosque in Riyadh (facades of a mosque in Riyadh and the design of the facades of additional buildings and the design of landscapes and executive plans for facades and architectural plans and construction plans and electricity and air conditioning plans and Sanitary Installations Schemes )
- ◇ Urban planning works for the city of Hail, south of Riyadh, Kingdom Saudi Arabia.
- ◇ Preparing studies and designs for plant quarry projects for 6 sites in the Kingdom of Saudi Arabia The sites are:  
Jeddah Quarry                      Qassim Quarry  
Modern Quarry                      Medina Quarry  
Jazan Quarry                      Arar Quarry

من

January 2023

إلى

present



**Study of residential plans  
Industrial & Commercial**



# Project Implementation Phases

## First Stage Cadastral Works

The consultant will contract with one of the specialized offices to carry out all the cadastral survey, The surveying work will be carried out with professionalism, high efficiency, and with the required accuracy.

The quality control and assurance methodology will be applied to all survey results.

## Second Stage Geo-technical Study

Geo-technical studies mean all work related to site exploration and soil study rocks and groundwater, analysis and translation of information to predict the way the soil is disposed of when built on it,

These studies are very important in the design and implementation stages of buildings, and are complementary to them.

## Third stage hydrological study

**This study aims to identify and define existing and future hydrological conditions.**

**For the area to be studied. This is done by:**

- ◇ Identify the paths of valleys and reefs affecting the site.
- ◇ Analyze rainfall data statistically and determine the amounts of rainfall, running water and places its flow and sites threatened by floods.
- ◇ Determine the appropriate ways to drain torrential and rainwater.
- ◇ Testing the carrying capacity of streets and their ability to surface drainage.
- ◇ Hydrological modeling of the area is being done.
- ◇ Hydraulic calculations are made for the area.
- ◇ Determine the necessary procedures and measures to protect against the dangers of floodwater.

# Project Implementation Phases

## Fourth stage Geological study

**Geological engineering studies of the site are carried out to determine the areas, boundaries and types of rocks.**

**And the soil and the direction, length and type of structural movements, cracks and cracks on the site, and this is done Through:**

- ◇ Site inspection, field tests and terrain assessment for geo-engineering purposes.
- ◇ Studies of the locations of roads, dams and rocky slopes from a geo-engineering point of view.
- ◇ Assess the effects resulting from the risks of floods, floods, earthquakes and volcanoes and find appropriate solutions.

## Fifth Stage Environmental Study

**The environmental study of the project site aims to provide a distinctive environmental climate through:**

- ◇ Conducting the necessary studies to assess the environmental impact of the project in terms of climate, wind, temperature, humidity, Solar radiation, groundwater.
- ◇ Studying the current and future needs of the project and the development of its various elements, and measuring the volume of pollution during the stages of its development.
- ◇ Study the relationship between the elements of the project and each other as well as the relationship of the elements of the project with qualities Physical and earthy and their relationship to the surrounding environment.
- ◇ Any increase in demand for natural and other resources, or potentially depleted, is studied.
- ◇ Study methods of disposal of waste and solids and their impact on air and groundwater.

# Project Implementation Phases

## Sixth stage Preparation of engineering visualization and design alternatives

The consultant will prepare ideas and developmental alternatives for engineering visualization based on studies and analysis

The current status of the project site. The consultant will adopt the multi-criteria evaluation method for comparison

Among the alternatives, the bases and criteria for evaluation will be determined to determine the advantages and disadvantages of each alternative and compare Alternatives to each other and then present the full evaluation results and discuss them with the landowner and take their views

Modify the submitted ideas until the best engineering concept is reached and approved.

Design criteria will be determined based on relevant codes and specifications such as technical regulations

Saudi Standard Specifications, Saudi Building Code, Specifications and Requirements of the Ministry of Affairs

Municipality, Rural and Housing, Engineering Manuals for Universal Access Standards in the Built Environment, and Codes

Local and international road design such as the American Association of Highway Employees code. (AASHTO)



## Our Team

Assigned engineers

Job Title

2	Urban Planning Engineer
2	Structural Engineer
1	Architecture Engineer
1	مهندس لاندسکيب
10	Road Design Engineer
1	Planning and design expert in facilities and infrastructure (water and environment)
1	Expert in planning and designing facilities and infrastructure (electromechanical)
5	Graphic designer

# Examples of team expertise

Azizia neighborhood plan project Turbah city

Area 169.000 m<sup>2</sup>

Residential - Commercial



Labor Accommodation City Project Makkah

Area 690.000 m<sup>2</sup>

Residential city for workers



Southern Urban Center Project in Makkah

Area: 620.000 m<sup>2</sup>

Residential - Commercial

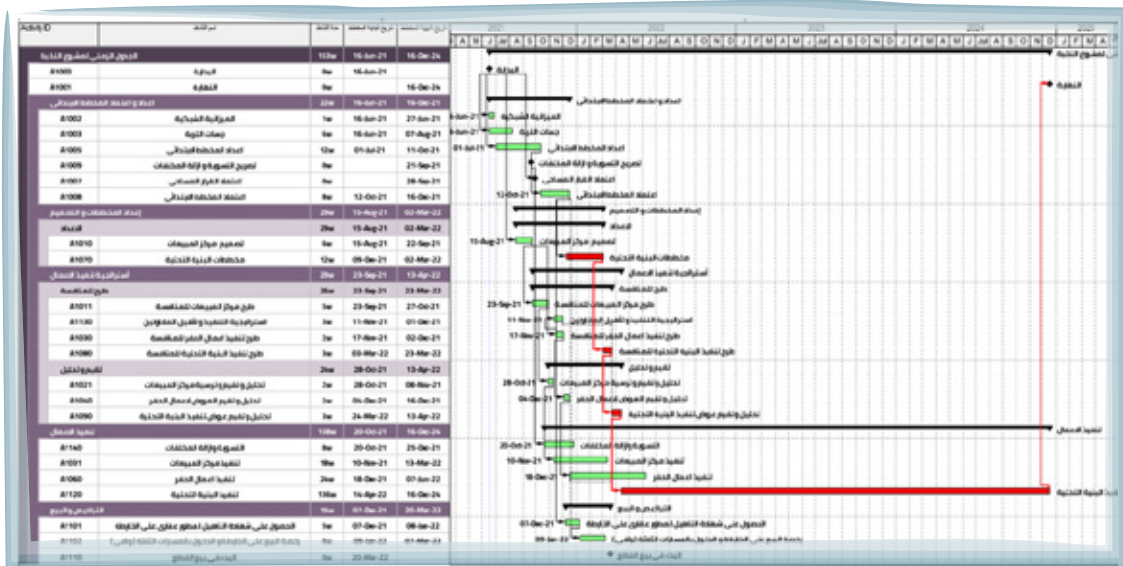


Eastern Urban Center Project in Makkah

Area: 460.000 m<sup>2</sup>

Residential - Commercial





Schedule



Project Outline

Elite Scheme Project  
(Zood)

- ◆ Weekly reporting
- ◆ Monthly project reporting
- ◆ Schedule preparation
- ◆ Setting up monitoring and control procedures
- ◆ Preparation of the KPIs of the project





# Planning a residential city



## (Hair city in Riyadh)

# 6

Project Investment  
Period  
**six years**

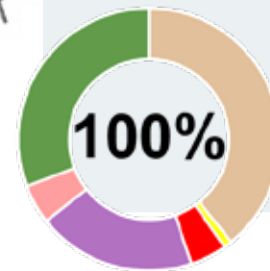
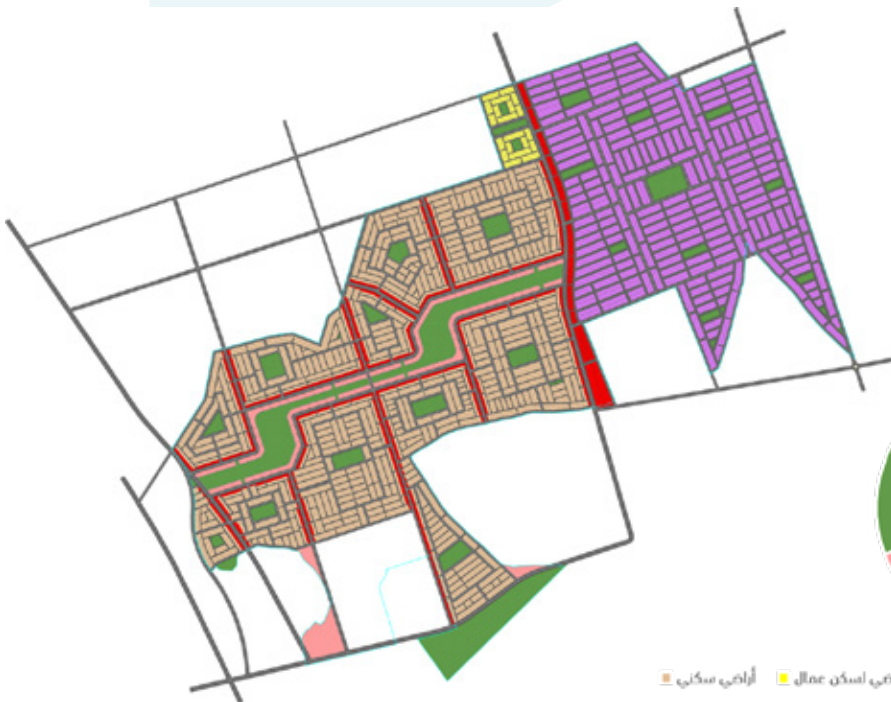
### The Main idea of investment

The project aims to plan and invest a plot of land with an area **21,606,451,13** square meters as an integrated industrial residential city

With a distinct urban character.

This is through an urban plan that achieves **70%** of Total Land Area as Saleable Land and Percentage of Services Public project **30%**

### Land Use Plan



■ أراضي سكني  
■ أراضي لسكن عمال  
■ أراضي تجاري  
■ أراضي صناعي  
■ أراضي استثماري  
■ خدمات

عدد القطع	النسبة %	المساحة /م <sup>2</sup>	الاستعمال
14130	%39,24	8478512	أراضي سكني
305	%0,08	183398	أراضي لسكن عمال
1652	%4,50	991503	أراضي تجاري
4247	%19,66	4247979	أراضي صناعي
-	%4,85	1049628	أراضي استثماري
-	%30,80	6655431,13	خدمات + طرق + مساحات خضراء
-	<b>%100</b>	<b>21606451,13</b>	<b>الاجمالي</b>

# Follow the planning of a Residential city (Hair city in Riyadh)

## Locations far from the project site



The project is located in the south of Riyadh in Al-Ha'ir neighborhood, which is considered one of the promising areas, and the land is characterized as Easily accessible through several main axes, the most important of which are Al-Kharj Road, Al-Ha'ir Road and Al-Aziziyah Road

66 كم  
Airport

57 كم  
Diriyah Historical Area

37 كم  
Amalek Abdullah Park

32 كم  
National Museum



## Cost, Contracts and Risk Management





# Follow the planning of a residential city (Ha'ir city in Riyadh)



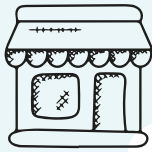
## Project Services

Spaces have been allocated for public services in the project distributed according to the design idea of the master plan with

Taking into account the walking distances and the scope of service for each service complex.



Schools



Shops



Mosques



Security Services



Public Parks



Health Services

## Project Components

The project is characterized by the diversity of its investment components, which meet the needs of a wide range of Saudi society

**4247**

**factory**

Number of  
Lands  
Industrial Area

**1652**

**Plot of land**

Number of  
Lands  
Commercial

**14130**

**Plot of land**

Number of  
Lands  
Residential

**305**

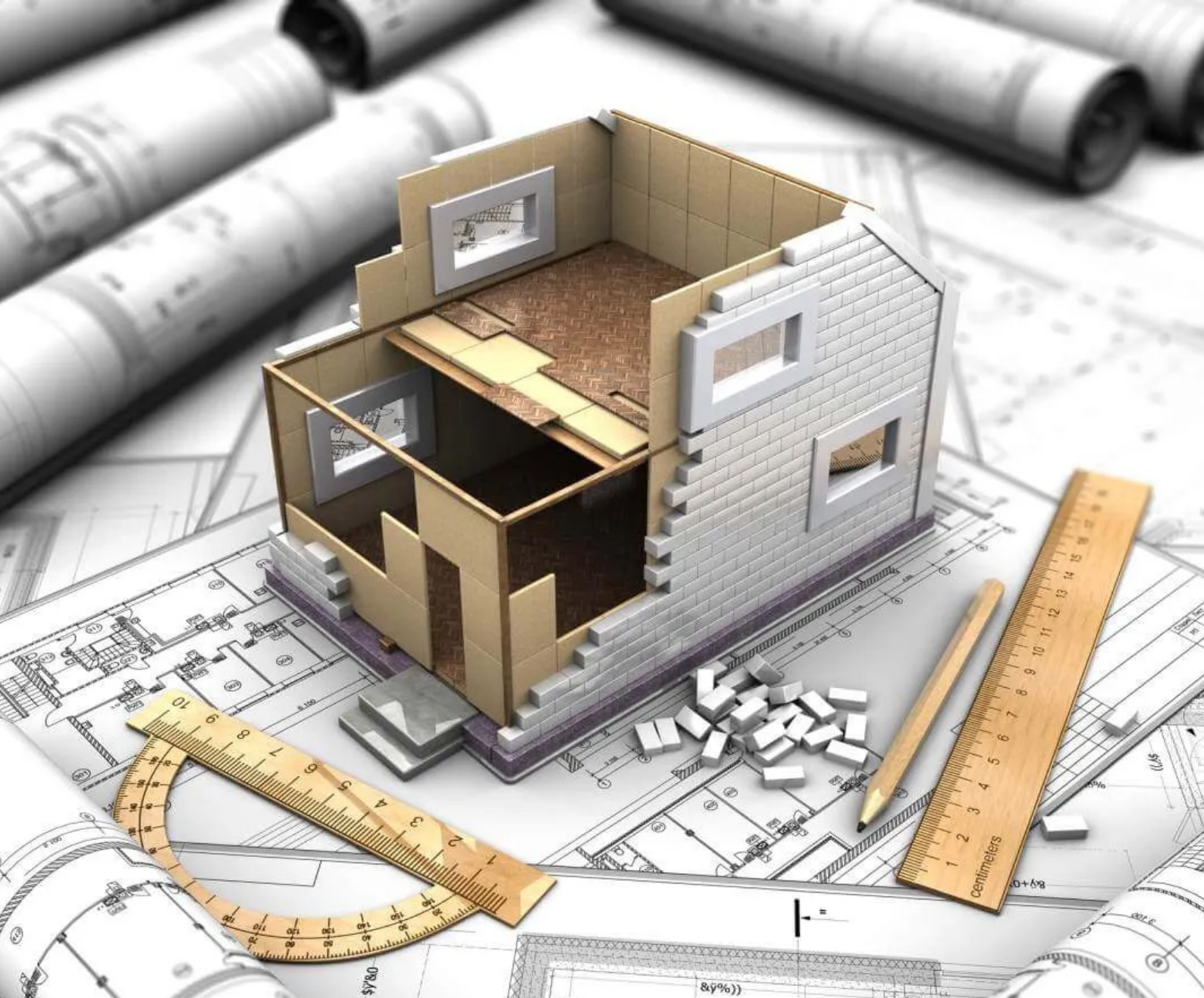
**Building**

Number of lands  
Labour  
Accommodation

**1,049,628**

**Square meters**

Area of land allocated for  
projects Various Investment



**Team Expertise  
And success partners**



## **Planning Projects and Green Areas**

# Coral Resort project in Marsa Alam design and supervision project (Red Sea) On execution



## Owner:

Al-Salam Company for Tourism and Real Estate Projects Flat: 207320 m2



## Site:

Marsa Alam Red Sea City



## Project Components:

Hotel building - commercial center - chalets - main restaurant and cafeterias - outdoor seating areas - Shaded - swimming pools for adults and others for children - mosque - children's play area - building Staff housing.



# Tabarak residential complex



**Owner:**

Tabarak Holding



**Site:**

New Cairo



# Sheikh Zayed Sports Club Development Proposal Project (Sheikh Zayed City)



**Owner:**

Sheikh Zayed Sports Club



**Flat:**

50000 m<sup>2</sup>







# Preparation of the general plan and detailed plans



## For a residential area – east of Unaizah city



### Owner:

Honorable / Saad bin Mohammed Al-Saab



### Site:

Unaizah City / Saudi Arabia



### Flat:

694 (2,915,000 acres) m2





# General Site Coordination Project for Centers UPTOWN CAIRO SERVICE IN COOPERATION With OLC Consulting Office



## Owner:

Emaar Misr Company



## Site:

Katameya – Cairo



## Flat:

5000 m<sup>2</sup>



# Engineers Syndicate Club Project Alexandria



## Owner:

Syndicate of Engineers – Alexandria



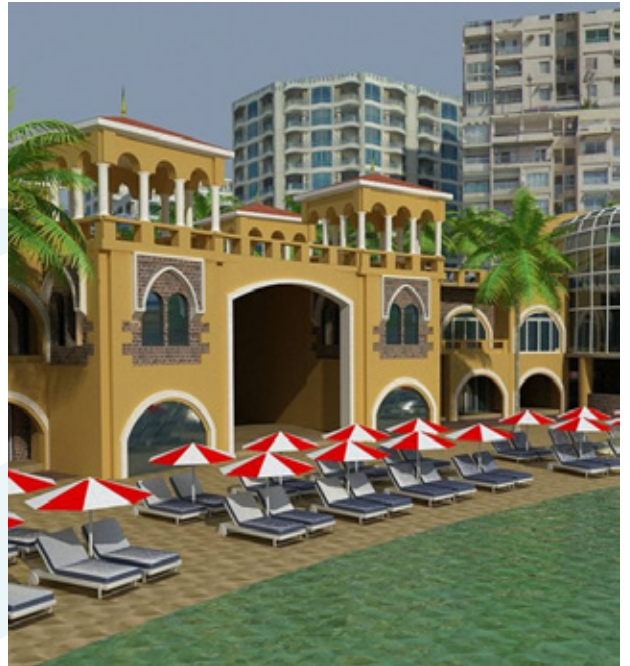
## Site:

Corniche Road – Saba Pasha – Alexandria



## Flat:

45000 m2



# Tourist residential complex project

## Entertainment in Hurghada



### Owner:

Ministry of Justice Experts Club



### Site:

Hurghada City North of Neighborhoods



### Flat:

26000 m<sup>2</sup>



### Project Components:

Hotel building - residential buildings - main restaurant and cafeterias - outdoor seating areas - Shaded - swimming pool for adults and another for children - mosque - investment shops - play area children



# Urban study project for land re-planning Agricultural for tourism and recreational purposes



**Owner:**

Farm Land



**Site:**

Doha- State of Qatar



**Flat:**

45 hectares





# The project of coordinating the general site of the rest



**Special Honorable / Ghaleb Al-Mufti**



**Site:**

Jeddah City Kingdom of Saudi Arabia



**Flat:**

3500 m2





# General Site Coordination Project Sheikha Basma Palace



## Site:

Dammam City Kingdom of  
Saudi Arabia



## Flat:

3800 m2





# General Site Coordination Project FOR GARDEN VIEW RESIDENTIAL RESORT



## Owner:

Al Rai Construction & Development Company



## Site:

Fifth Settlement – New Cairo



## Flat:

24 acres







# Neighborhood General Site Coordination Project

## Sixteenth Social Housing



**Owner:**

City Reconstruction Authority



**Site:**

Tenth of Ramadan City



**Flat:**

240 acres





# Security Headquarters Development and Coordination Project



## General Site of a Group of Sites (KAP 02b)



### Owner:

Ministry of Interior in collaboration with Talent Engineering Company



### Site:

Qassim / Al Jouf / Arar Saudi Arabia



### Flat:

250 acres / location





# General Site Coordination Project

## Villa M Mamdouh Radwan



**Owner:**

Ahmed Orabi Association



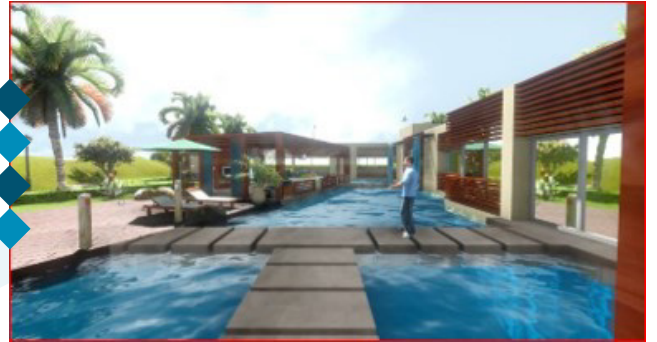
**Site:**

Cairo-Ismailia Road



**Flat:**

1800 m2



# General Site Coordination Project

## Ahmed Orabi Association Club



**Owner:**

Ahmed Orabi Association



**Site:**

Cairo-Ismailia Road



**Flat:**

36000 m<sup>2</sup>





# Site Design and Coordination Project Hassan Dhaif Allah Rest House



## Owner:

Hassan Dhaifallah Alshamrani



## Site:

Alshamrani in Riyadh Kingdom of  
Saudi Arabia



## Flat:

3000 m<sup>2</sup>





# Land plot planning project



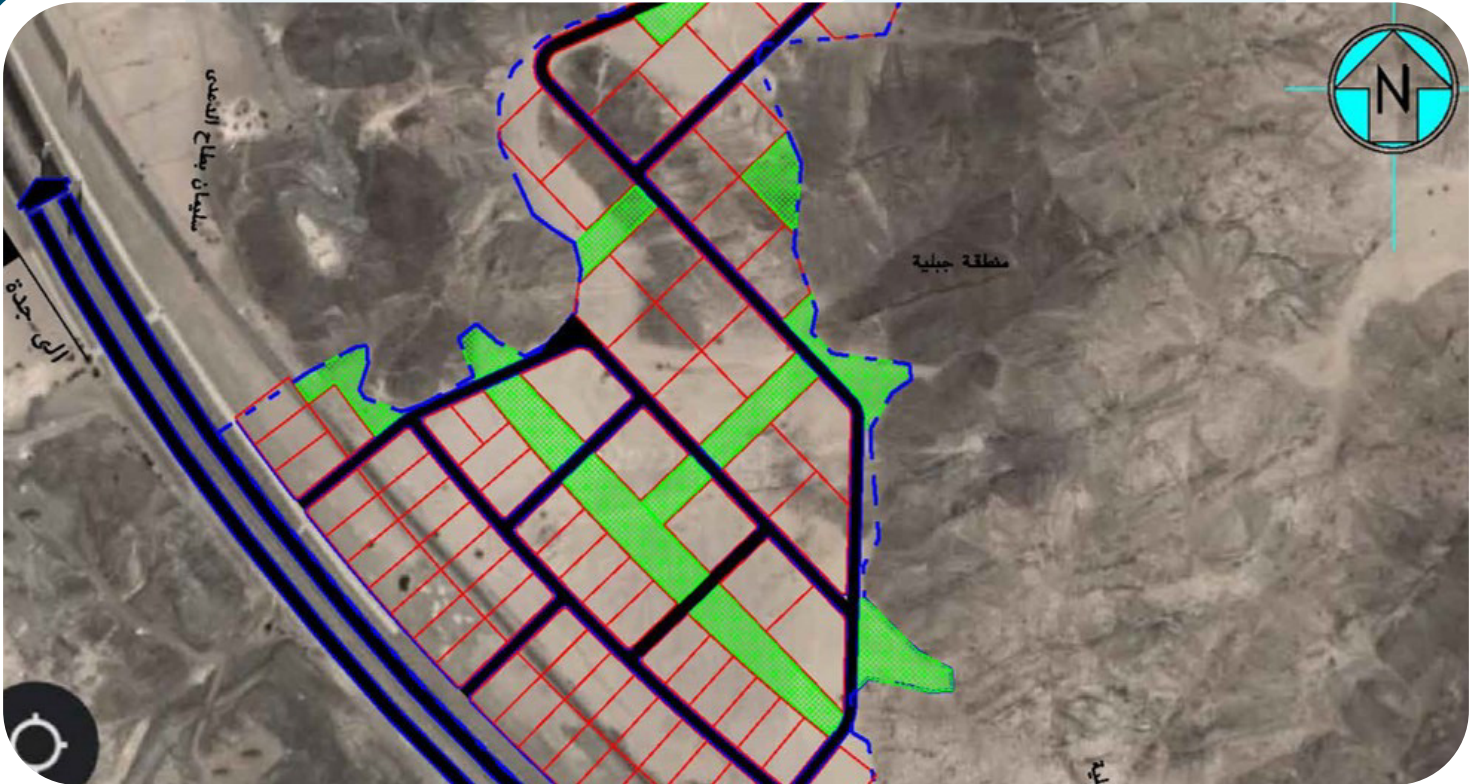
## Site:

Makkah - On the Fifth Ring Road Kingdom of Saudi Arabia



## Flat:

500000 m<sup>2</sup>





# Bus Parking Project



## No. -01 in the government district



### Owner:

Ministry of Housing, Utilities and Urban  
Communities



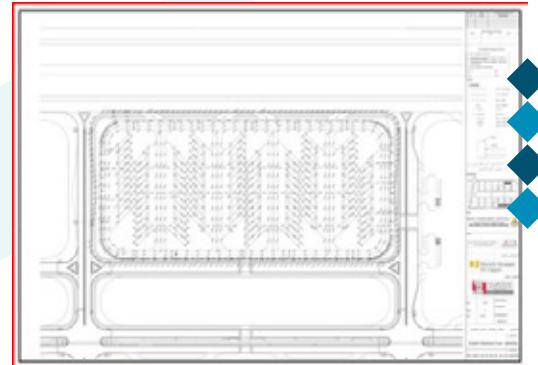
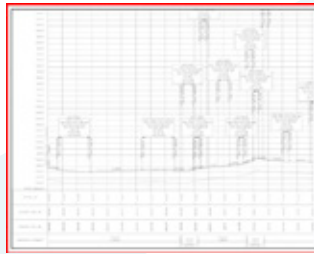
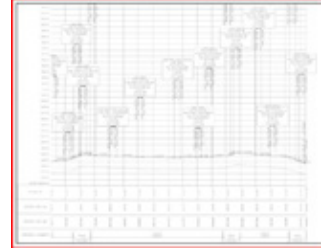
### Site:

In the new administrative capital,  
Arab Republic of Egypt



### Flat:

12250 m<sup>2</sup>





# VILLAGE WEST PROJECT

## Luxury residential compound



### Owner:

Hassan Dorra CRC Group



### Site:

Sheikh Zayed City



### Flat:

522000 m2







# Uptown Cairo Z5-Phase 2 Project

## Luxury residential compound



**Owner:**

EMMAR MISR



**Site:**

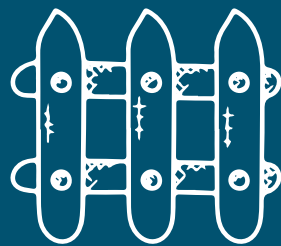
Mokattam District – Cairo Governorate



**Flat:**

45000 m<sup>2</sup>





## **Public Building Projects**

# Medical Syndicate Club Project



## Owner:

Medical Syndicate



## Site:

New Damietta City, Second District



## Flat:

6000 m<sup>2</sup>



## Project Components:

Recreational social building - multi-purpose hall for 750 people - main restaurant and Cafeteras - shaded outdoor seating areas - Olympic swimming pool - chalets - shops Investment - Children's play area



# Medical Professions Union Club Land Clubs - New Damietta City



## Owner:

Medical Syndicate



## Site:

New Damietta City, Second District



## Flat:

5981.58 m<sup>2</sup>



## Project Components:

Recreational social building - multi-purpose hall for 750 people - main restaurant and Cafeterias - shaded outdoor seating areas - Olympic swimming pool - chalets - shops Investment - Children's play area



Horizontal projection of the basement role



Horizontal projection of the role of the gym





# Engineers Syndicate Building Development Project



## Owner:

Egyptian Syndicate of Engineers



## Site:

Kafr El Sheikh City



# Addiction and Health Treatment Center Project

Psychological in cooperation with the Department of Works  
Egyptian Military Ministry of Defense



## Owner:

Ministry of Social Solidarity



## Site:

6th of October City



## Flat:

30700 m<sup>2</sup>





# Damanhour Military Hospital Project

In cooperation with the Works Department  
Egyptian Military Ministry of Defense



## Owner:

Ministry of Defense



## Site:

Damanhour City / Beheira Governorate



## Flat:

16540 m2





# Club Building Development Project Al Nahri Veterinarians



**Owner:**

Veterinarians Association



**Site:**

Corniche El Nil – Agouza



**Flat:**

1200 m2







# Hotel building project in Qiriya Coral Tourist



## Owner:

Al Salam Company for Tourism and Real Estate Projects



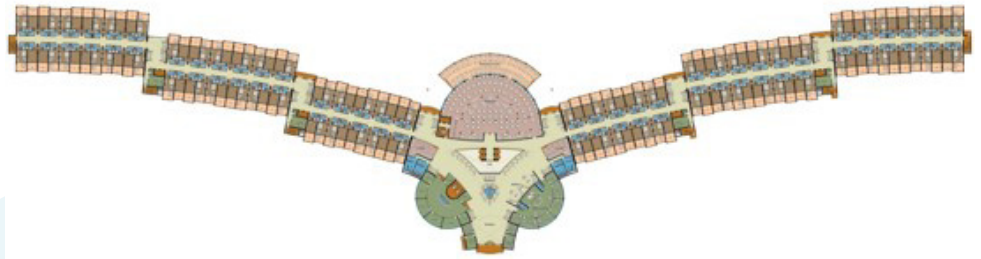
## Site:

Marsa Alam Red Sea City



## Flat:

11350 m2



# Hotel building project in the residential complex of the Ministry of Justice in Hurghada



## Owner:

Ministry of Justice Experts Club



## Site:

Hurghada City, North of Neighborhoods



## Flat:

26000 m2





# Tower Design Project

## 4-star hotel



### Owner:

Al Mufti Real Estate Investment Group



### Site:

Azizia - Makkah - Kingdom of Saudi Arabia



### Flat:

5400 m2





# Tower Design Project

## 5 star hotel



### Owner:

Al Mufti Real Estate Investment Group



### Site:

Ajyad – Makkah



### Flat:

2200 m2



# International Schools Complex Project



## Owner:

Lethaar M Company



## Site:

Obour City



## Flat:

6000 m2



## Project Components:

Nursery and primary, preparatory and secondary school 30 classrooms and laboratories for each stage

Educational indoor swimming pool, multi-purpose hall and private garage in the basement of the Passat and Private Vehicles



# School Design Competition Project

## Low costs



### Owner:

Misr El Kheir Foundation



### Flat:

1200 m<sup>2</sup>





# Embassy Building Development and Construction Project



## New to the Sultan of Brunei Darussalam



**Owner:**

Zamalek – Cairo



**Site:**

Brunei Sultan





# Private Hospital Project Al-Safa in Kafr Al-Dawar



## Owner:

Dr. Khaled Mousa & Co.



## Site:

Kafr El Dawar City Beheira Governorate



## Flat:

2400 m2







# Private Hospital Project Al Safwa Al Arish City



## Owner:

Muhammad Al Qasas



## Site:

Al , Arish City North Sinai Governorate



## Flat:

2000 m2





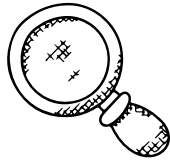
## Establishment of the Project Management Office



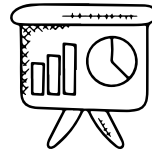
# Establishment of the Project Management Office



Evaluation and Establishment Dashboards



Supervision and follow-up



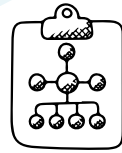
Providing training & Workshops



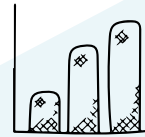
Create a directory KPIs Sections and



Establishing an office Project Management



Implementation Guide Work



Rates Standard

Suppliers

PMO

Business Support

Business Development

Cost Estimation

Finance

Scheduling and control

Cost and contract Risk Management

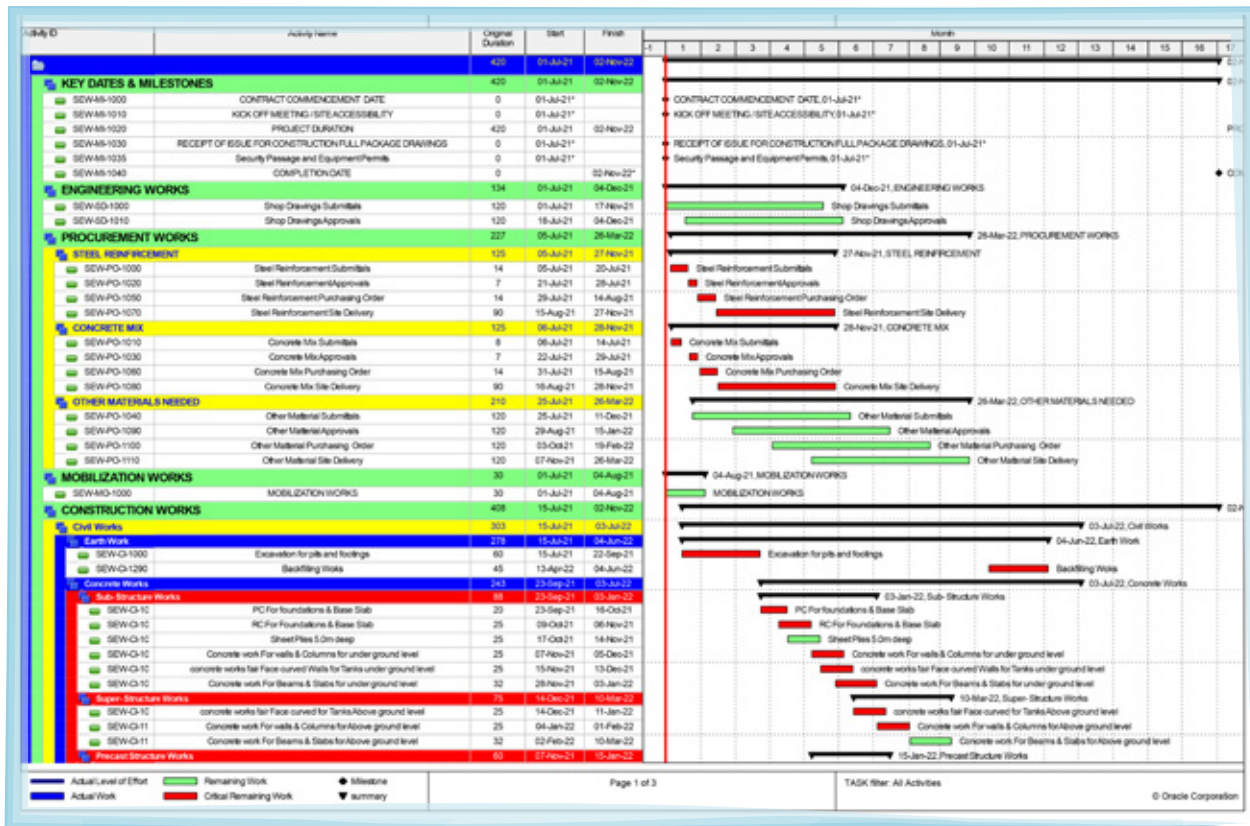


# Planning and Project Control Outputs

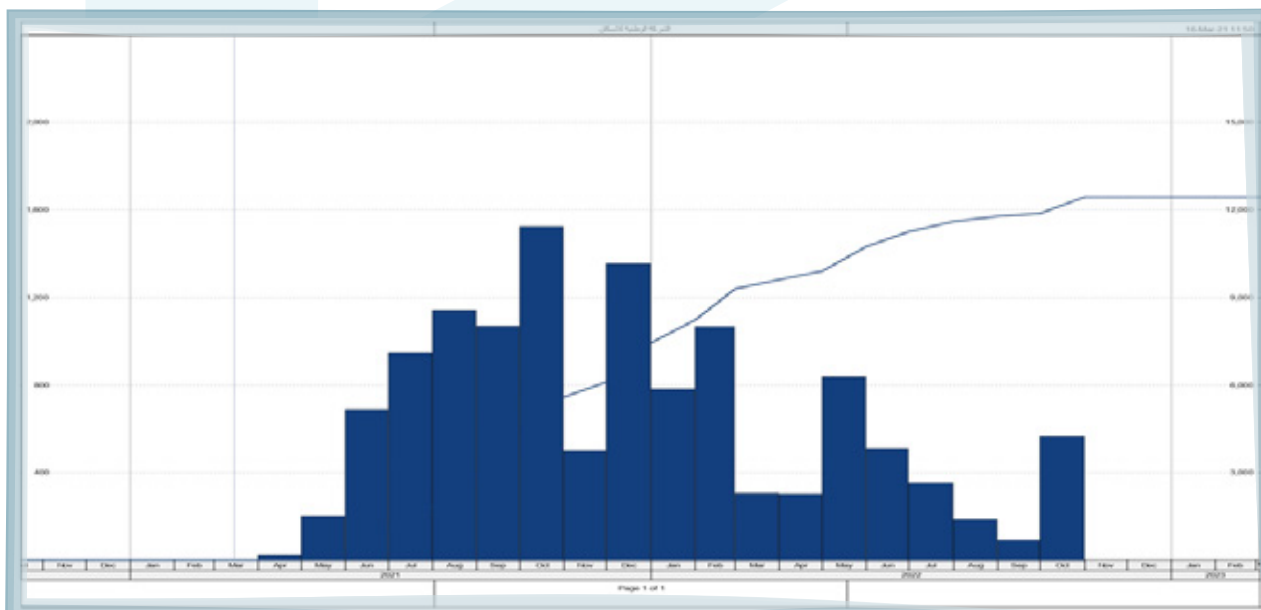
- ◇ Setting up standard productivity rates.
- ◇ Apply standard rates to more than one project as a case study.
- ◇ Develop productivity standard rates.
- ◇ Analyze standard rates after applying them to more than one project as a case study.
- ◇ Apply standard prices to more than one project after modification.
- ◇ Create final benchmark prices for the company.
- ◇ Use standard prices in planning and cost control.
- ◇ Submit a study on the application of the incentive system according to productivity rates.
- ◇ Application of the study of the use of productivity in contracting with subcontractors
- ◇ The stage of collecting requirements.
- ◇ Preparation of implementation guidelines and quality control work.
- ◇ Apply implementation guidelines and quality control work in more than one project as a case study.
- ◇ Monitor and review implementation guidelines and quality control.
- ◇ Analysis of findings and recommendations.
- ◇ Create a demonstration of implementation and quality control work.
- ◇ Review, monitor, follow-up and measurement after the implementation and quality control application.
- ◇ Preparing the timetable (baseline) for new projects.
- ◇ Preparing the schedule (remaining works) for old projects.
- ◇ Preparing weekly progress reports for new projects.
- ◇ Preparing weekly progress reports for old projects.
- ◇ Preparing corrective plans for delayed projects.
- ◇ Follow up on comprehensive corrective plans for delayed projects.
- ◇ Make claims for time extension.



# Scheduling Management and Project Control



A sample program from me for the project - Peramvera



Peramvera S-Curve - Model



# Scheduling Management and Project Control

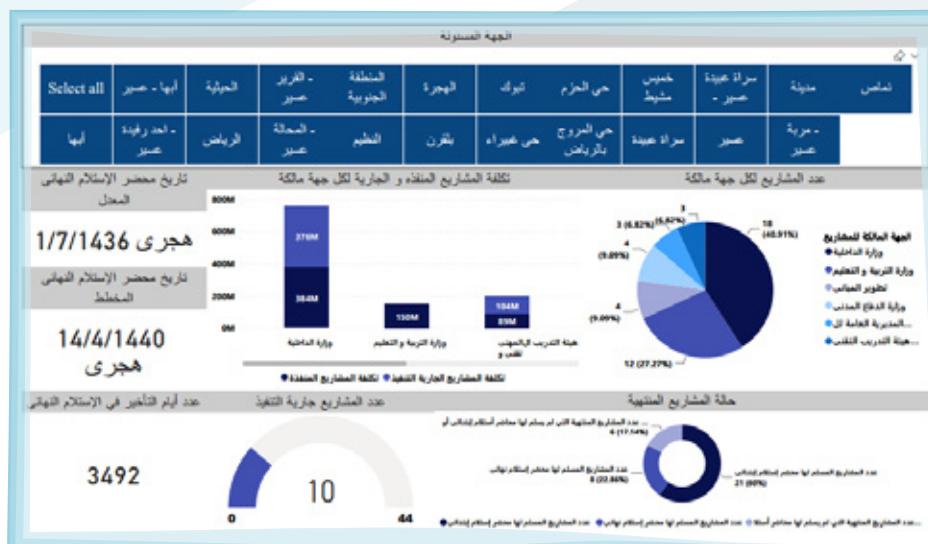


	Month-1	Month-2	Month-3	Month-4	Month-5	Month-6	Month-7	Month-8	Month-9	Month-10	Month-11	Month-12	Month-13	Month-14	Month-15	Month-16
<b>Direct Labors</b>																
Carpenter			40	40	90	70	70	70	70	70						
Carpenter Helper			40	40	90	70	70	70	70	70						
Steel Fixer			50	45	35	35	30	12	7							
Steel Fixer Helper			50	45	35	35	30	12	7							
Precast technician					64	64	64	30	30	30						
Carpenter			10	10	15	15	15	15	10	10	10	10	10	10		
Steel Erector					10	10	10	10	10	10						
Insulation technician							12	12	6	4						
Mason Worker						8	8	8								
Plasterer								20	29	29	20					
Plasterer Helper								20	29	29	20					
Painter								12	12	12	8	4	2			4
Painter Helper								12	12	12	8	4	2			4
Talor										1	1	1	1	1		
Talor Assistant										2	2	2	2	2		
Electrical technician	2	2	2	2	4	4	20	20	30	30	30	10	10	10	10	10
Mechanical technician	2	2	2	2	4	4	15	15	20	20	20	5	5	5	5	5
Plaster/Board partitions								4	4	4	4					
Doors Technician							3	3	3							
Windows technician							3	3	3							
Shutter door Technician									5							
Normal labour	10	10	15	15	30	30	30	30	30	30	30	15	15	15	10	10
<b>Total direct Labors</b>	<b>14</b>	<b>14</b>	<b>109</b>	<b>209</b>	<b>397</b>	<b>345</b>	<b>390</b>	<b>414</b>	<b>397</b>	<b>377</b>	<b>153</b>	<b>51</b>	<b>47</b>	<b>43</b>	<b>25</b>	<b>33</b>

Sample of expected labor and equipment distribution

	Month-1	Month-2	Month-3	Month-4	Month-5	Month-6	Month-7	Month-8	Month-9	Month-10	Month-11	Month-12	Month-13	Month-14	Month-15	Month-16
<b>INDIRECT Equipment</b>																
Labor Bus	4	5	6	6	10	10	10	10	10	10	10	10	6	6	4	4
Pick-up	2	2	2	2	4	4	4	4	4	4	4	4	2	2	2	2
Double cabinet	2	2	2	2	2	2	2	2	2	2	2	2	2	2	2	2
Generator	2	2	2	2	2	2	2	2	2	2	2	2	2	2	2	2
Power Adapter	1	1	1	1	1	1	1	1	1	1	1	1	1	1	1	1
<b>Total indirect</b>	<b>11</b>	<b>12</b>	<b>13</b>	<b>13</b>	<b>19</b>	<b>19</b>	<b>19</b>	<b>19</b>	<b>19</b>	<b>19</b>	<b>19</b>	<b>19</b>	<b>13</b>	<b>13</b>	<b>11</b>	<b>11</b>
<b>Direct Equipment</b>																
Excavator	7	7	7													
Loader	3	3	3	2	2	2	2	2	2	4	4	4	2	2	2	1
Dump Truck	8	8	8							4	4	4				
Winch	1	2	2	2	2	2	2	2	2	2	2	2	1	1	1	1
Crane	1	2	2	2	2	2	2	2	2	2	2	2	1	1	1	1
Cover Lift				2	2	2	2	2	2	2	2	2				
welding machine				4	8	12	12	12	12	8	4					
Compressor				2	4	8	8	8	8	4	2					
Helho				2	4	8	8	8	8	4	2					
Man Lift				2	2	2	2	2	2	2	2	2				
Compactor		2	2						2	2	2					
pick Cut	1	1	1	1	1	1	1	1	1	1	1	1	1	1	1	1
<b>Total Direct</b>	<b>19</b>	<b>23</b>	<b>25</b>	<b>9</b>	<b>19</b>	<b>27</b>	<b>39</b>	<b>41</b>	<b>41</b>	<b>47</b>	<b>35</b>	<b>25</b>	<b>5</b>	<b>5</b>	<b>5</b>	<b>4</b>
<b>Total Equipment (direct &amp; indirect)</b>	<b>30</b>	<b>35</b>	<b>38</b>	<b>22</b>	<b>38</b>	<b>46</b>	<b>58</b>	<b>60</b>	<b>60</b>	<b>66</b>	<b>54</b>	<b>44</b>	<b>18</b>	<b>18</b>	<b>16</b>	<b>15</b>

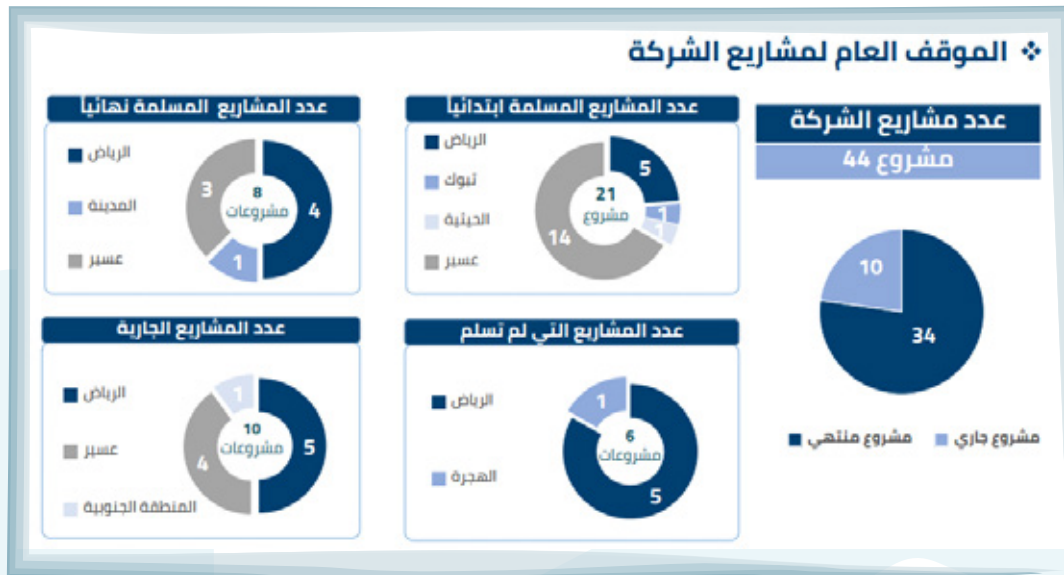
Sample of expected labor and equipment distribution



Sample of following up the status of the company's projects



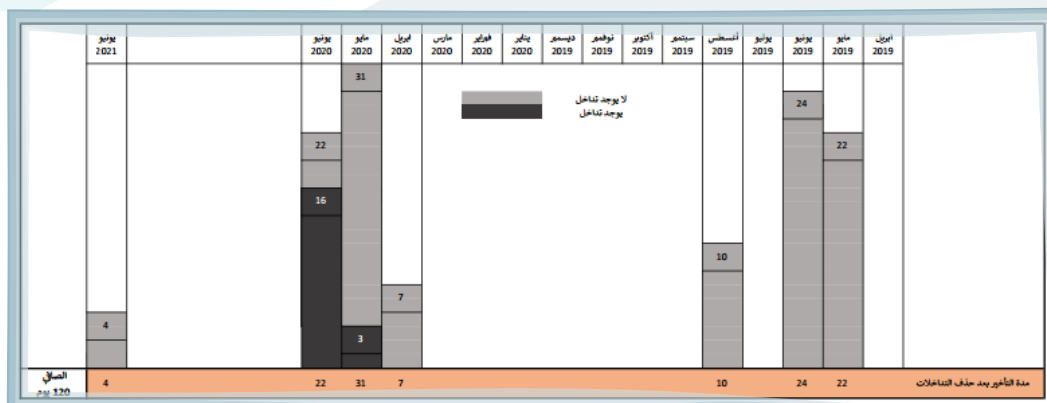
# Scheduling Management and Project Control



Sample of following up the status of the company's projects

رقم المستخلص	قيمة المستخلص	إجمالي المستحق	تاريخ رفع المستخلص	تاريخ التحصيل	تاريخ استحقاق الصرف	مدة الصرف	مدة تأخير صرف المستخلص بعد 60 يوم
4			07-03-2019	28-05-2019	06-05-2019	82	22
5			07-04-2019	30-06-2019	06-06-2019	84	24
7			10-06-2019	19-08-2019	09-08-2019	70	10
15			23-02-2020	16-06-2020	23-04-2020	114	54
16			29-03-2020	22-06-2020	28-05-2020	85	25
26			18-04-2021	لم يصرف حتى 21-6-2021	17-06-2021	64	4

Sample for analyzing delays and making claims to extend the duration of the project



Sample for analyzing delays and making claims to extend the duration of the project

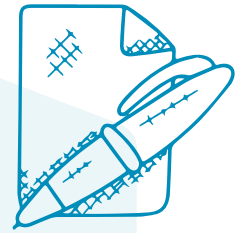


## Cost Contracts and Risk Management



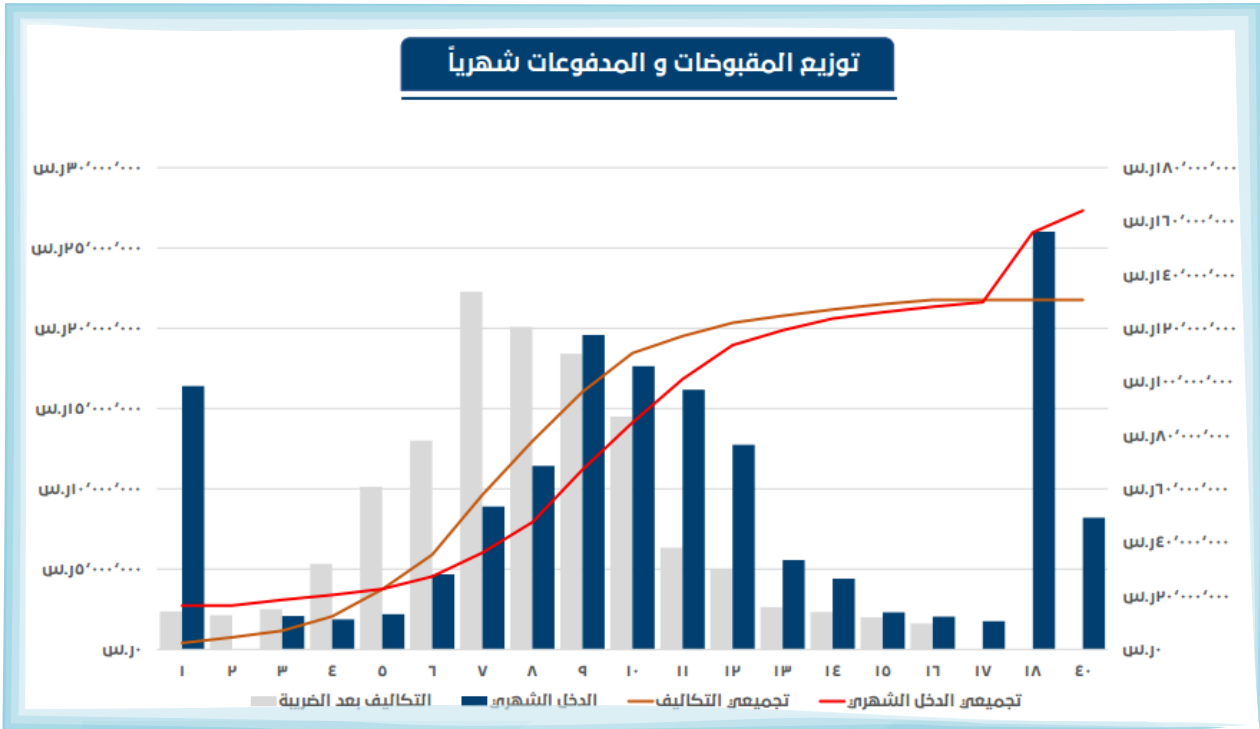
# Cost, Contracts and Risk Management

- ◆ Prepare a budget for new projects and a plan for the company's revenues and expenses.
- ◆ Prepare cost control reports and invoices for new projects.
- ◆ Preparing case studies on new projects.
- ◆ Preparing final reports for projects and closing projects.
- ◆ Preparing a plan and risk reports for new projects.
- ◆ Update lessons learned according to risk.
- ◆ Review inventory and business measurements.
- ◆ Contract analysis for new projects.
- ◆ Prepare claims for new projects.
- ◆ Preparing a draft contract with the client and subcontractors for future projects.

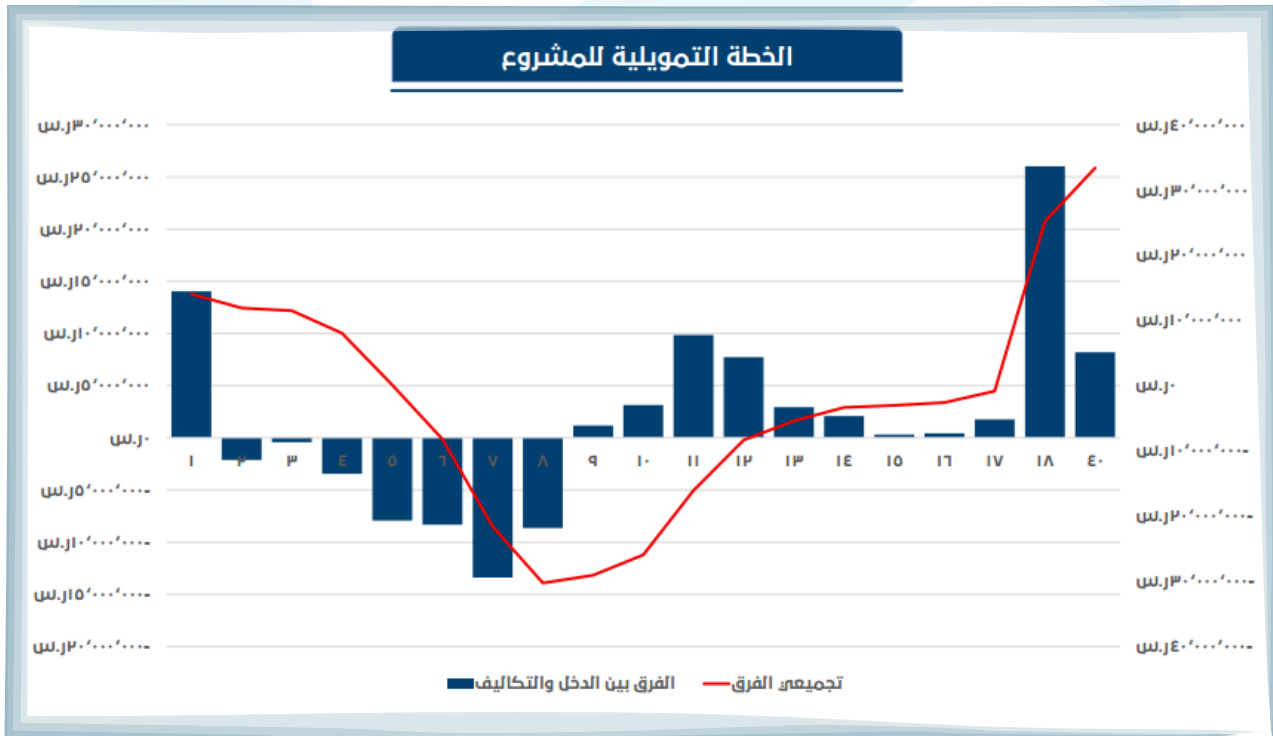


معلومات عامة		
الرقم	التاريخ	الاسم
1.9	2023	مذكرة التفويض الرئيسية
6.6	2023	مذكرة تفويض الخدمات الرئيسية
10.1	2023	مذكرة تفويض الخدمات الرئيسية
10.2	2023	مذكرة تفويض الخدمات الرئيسية
<b>المواد التي يجب حذفها</b>		
4.5	2023	مذكرة تفويض الخدمات الرئيسية
7.1	2023	مذكرة تفويض الخدمات الرئيسية
9.1	2023	مذكرة تفويض الخدمات الرئيسية
11.1	2023	مذكرة تفويض الخدمات الرئيسية
<b>المواد التي يجب إضافتها</b>		
		مذكرة تفويض الخدمات الرئيسية

Sample contract analysis for a new project



A model for the study of receipts and payments



A model for the study of receipts and payments

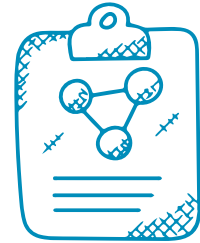
# Provide training and workshops for workers In sectors and divisions



**Exercises  
& Workshops**



**Submission of an initial  
report on a plan Proposed  
training and development**



**Preparing a training  
path For the cadres  
of the first stage**



**Training course in Saudi Arabia**



**Training courses in the Arab Republic of Egypt**

**Under the Supervision of a Project Management Expert**

**Eng. Hatem Adel**  
**President Project Management**

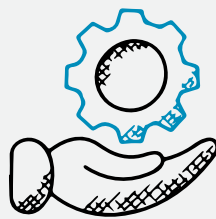


## Establishment of the Project Management Office



### **Supervising project management work and following up Implementation and periodic reporting**

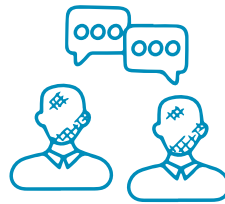
- ◇ Requirements compilation and modeling phase
- ◇ Supervising project management work and following up implementation in the field of project management on site
- ◇ Provide periodic reports on project status, work progress, and invoices
- ◇ Training and Application Phase



### **Providing Technical Support by Evaluating the Monthly Performance of projects**

- ◇ Prepare and provide analysis of the current situation through the dashboard to measure the current performance of the company
- ◇ Project Performance Study
- ◇ Provide technical support by evaluating project performance through dashboard setup

# PMO Schedule Example for

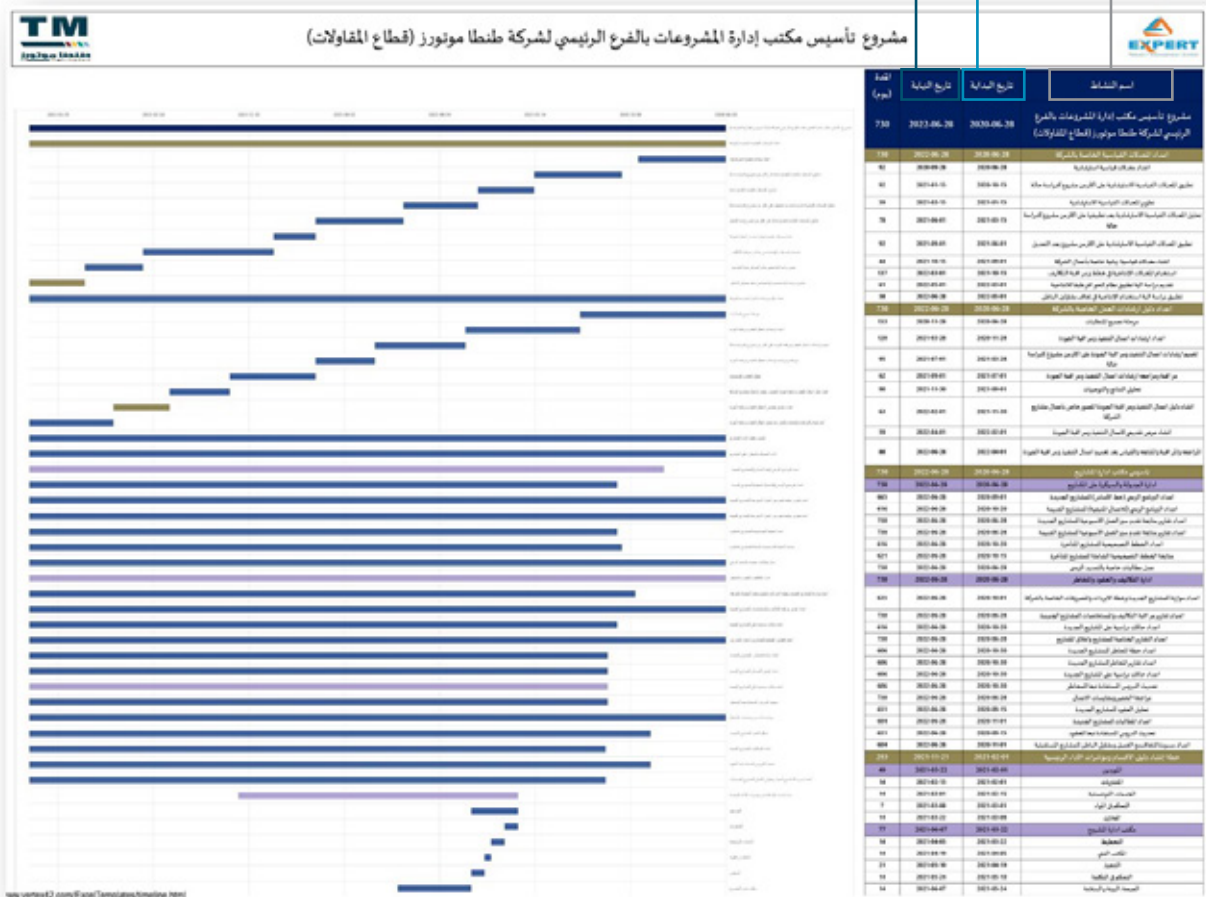


## Consulting Services

Expiry Date

Start Date

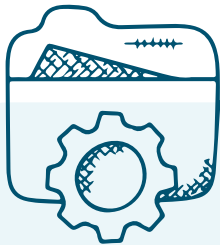
Activity Name



We create a project timeline that organizes tasks, resources, and dates Accrual in an ideal sequence so that the project can be completed on time Selected efficiently and effectively



# PMO Business Scope



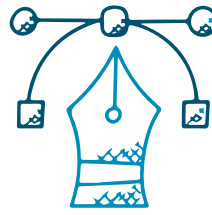
- ◇ Preparing indicative standard rates.
- ◇ Preparing a project management manual for the company.
- ◇ Preparation of the company's work implementation manual.
- ◇ Establishment of the Project Management Office.
- ◇ Create a bank of lessons learned from previous projects and build on those lessons for continuous improvement of the company's project management methodologies and processes.
- ◇ Develop and establish standards, policies, procedures and templates for project management, standardize those standards for project management within the company, and develop project management processes to build a unified methodology.
- ◇ Monitor compliance with project management standards, policies, procedures and templates by assessing Projects
- ◇ Establish a shared resource management system across projects.
- ◇ Provide training and workshops for project management workers.
- ◇ Prepare a plan to manage communication with projects.
- ◇ Supervise project management work, follow up on implementation and submit periodic reports.
- ◇ Providing technical support by evaluating the monthly performance of projects by setting up a dashboard (dashboard)



**Main stages  
To complete the construction  
of the office**



# The Main Stages of Completing the Construction of the Office



## Design

This phase aims to determine the form and role of the Project Management Office according to the needs of the Ministry of Transport Logistics services and the development of the executive plan for the establishment of the office.

### input

- ◇ Reports, information and organizational and operational documents of the Ministry.
- ◇ Questionnaire to measure the maturity of enterprise management
- ◇ Office Establishment Planning Form

### Processes

- ◇ Collection of information.
- ◇ Measure the maturity level of enterprise management.
- ◇ Determine the type and function of the project office.
- ◇ Preparing the charter of establishing the Project Management Office.
- ◇ Develop a foundation plan.

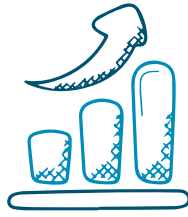
### outputs

- ◇ Report the current status of the Ministry.
- ◇ Charter of Establishment of the Approved Project Management Office.
- ◇ Approved PMO establishment plan.





# The Main Stages of Completing the Construction of the Office



## Construction

This phase aims to build the PMO work methodology and develop a training plan for the Stakeholders based on training needs analysis – TNA.

### input

- ◇ Approved PMO Establishment Plan
- ◇ Certified Project Management Office Incorporation Document
- ◇ Assessment of the current situation of the Ministry of Transport and Logistics

### Processes

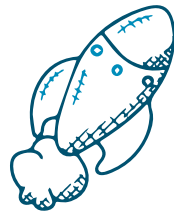
- ◇ Developing the Ministry's project management methodology, including:
  - ◇ Project Management Policies
  - ◇ Project Management Framework
  - ◇ Project Management Governance Model
  - ◇ Project Management Mechanisms
  - ◇ Tools & Forms
- ◇ Develop a capacity and competency building plan

### outputs

- ◇ Develop a capacity and competency building plan
- ◇ Approved project management methodology.
- ◇ Project Management Competency Assessment Report at the Ministry
- ◇ Capacity Building Plan



# The Main Stages of Completing the Construction of the Office



## Operating

The operational phase aims to collect the benefits for which the office was established through the application of

Adopted methodologies and policies, through the following:

### input

- ◇ Approved project management methodology.
- ◇ Human, administrative, technical and financial resources required for operation

### Processes

- ◇ Change management and application of the approved project management methodology and what it includes From management, follow-up, solving obstacles and risks, escalating and measuring performance.

### outputs

- ◇ Periodic reports of project performance.
- ◇ Assessment of commitment and capabilities.
- ◇ Commitment of projects to methodology.
- ◇ Capabilities of project managers and teams.



# The Main Stages of Completing the Construction of the Office



## Improvement

This phase aims to continue the operation of the PMO in a proper manner leading to to achieve sustainable value and benefit for the Customers.

After a certain period of time from the start of the application of Project Management Methodology There is a need to review and improve performance through the following:

### input

- ◇ Lessons learned from the operational phase
- ◇ Project Performance Reports
- ◇ Strategic and operational directions, requests and priorities
- ◇ Questionnaire for assessing the maturity of enterprise management

### Processes

- ◇ Evaluate and measure the maturity of the institutional management of projects in the Ministry.
- ◇ Develop and approve a roadmap and development plan.

### outputs

- ◇ An approved development roadmap aimed at maximizing the benefit From the Project Management Office.
- ◇ Institutional management maturity measurement report for projects.



## **Marketing Consulting Services**

# Marketing Consulting Services

Project Management Expert Group provides marketing consulting services

For companies, institutions and businessmen and developing long- and short-term strategic plans

It also conducts market study, project management, preparation of feasibility study and market analysis.

and competitors and understand customer requirements and suggest the best means to market products.

Marketing consulting is the basis for building business relationships through the use of the best means of Marketing, advertising, promotion and making advertising, marketing and promotional plans For products and follow-up customers after purchase and communicate with them anywhere to provide confidence And pay attention to them and know their evaluation of the product and its marketing campaign.

It should be noted here that the success of providing advice Marketing at Expert Group Management Company Projects come from taking up marketing consulting For the elements of the marketing mix in detail from During the study and analysis of supply and demand trends The components of the marketing mix are as follows:



- ◇ Various promotions for competing or alternative products and services.
- ◇ Product and service logistics such as geographical spread, distribution methods and methods.
- ◇ Study the efficiency and effectiveness of current salesmen and marketers.  
A map of the flow and implementation of the sales process and ways to develop it.
- ◇ Visual evidence from prints, explanatory video clips and advertising means
- ◇ Study the trends of actual demand during the past years and the expected demand during the years coming on the product or service.
- ◇ Pricing mechanisms and strategies, whether in terms of price, collection methods and facilities
- ◇ Granted to distributors and agents
- ◇ Preparing company profiles, identities, websites and e-marketing

# We are Pleased to Communicate with you



+966 54 113 8230



+2 22909521



Expert.PMEG



Branch 1: Cairo,Egypt  
Branch 2: KSA Riyadh



Expert.PMEG

