



3879 DUE WEST
ROAD | NO.202

listed by AMY MOLLOHAN

ANSLEY
REAL ESTATE

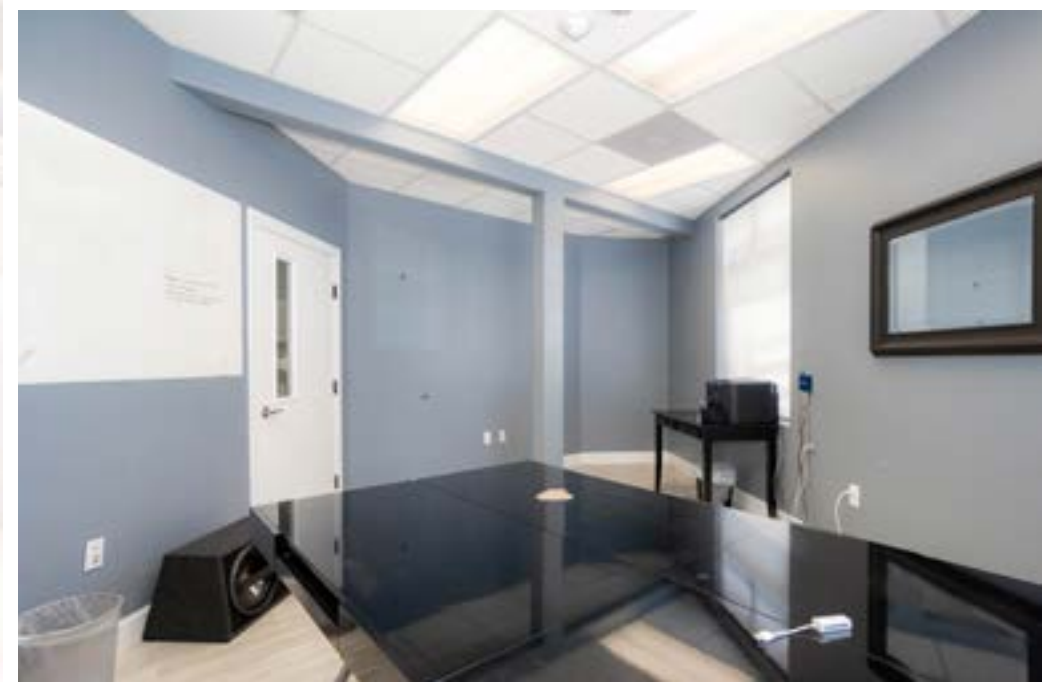
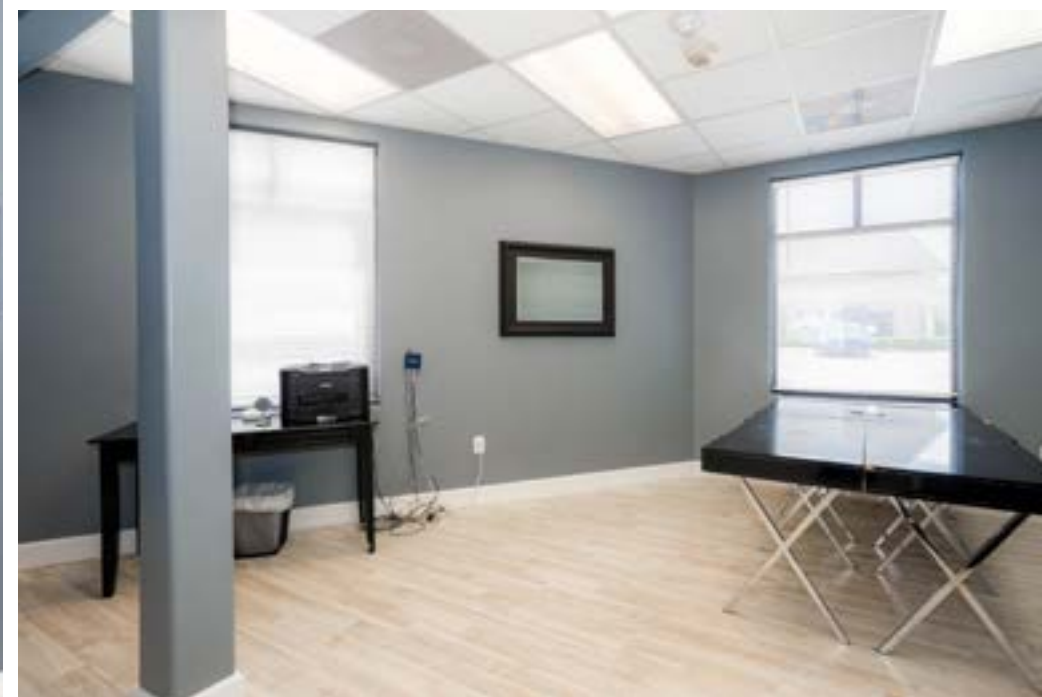
CHRISTIE'S
INTERNATIONAL REAL ESTATE



Prime Location

Situated at the intersection of Mary Eliza Trace and Due West roads, offering easy access to restaurants, gyms, shopping centers, and schools.- Flexible Space: Two suites available, allowing for customization to create a larger suite or occupy individually.- High-End Amenities: Each suite includes a private break room/kitchen, restrooms, and lockable exterior doors for privacy.- Ample Parking: Surrounded by wooded grounds with abundant parking for clients and staff.- Excellent Connectivity: Close to Barrett Pkwy, Marietta Square, Powder Springs, and Dallas for seamless commuting. Introducing a premier commercial office space located in the thriving West Cobb area. Nestled at the intersection of Mary Eliza Trace and Due West roads, this high-end building boasts a prime location with access to an array of amenities such as restaurants, gyms, shopping centers, and schools. Designed to cater to the needs of both employees and visitors, this spacious professional office suite offers flexibility with the availability of two suites, allowing for the option to create a larger suite or occupy a single suite. The property features ample parking and is surrounded by wooded grounds, including a meticulously

maintained green area. A prominent monument signage enhances the visibility of the building. Inside the building you will find a vestibule area in high end finishes leading to the four private suites in the building. In each office suite, you'll find a private break room/kitchen equipped with essential amenities like a sink, countertops, and kitchen cabinets, providing convenient storage options. For added privacy and accessibility, the offices feature a lockable door to the exterior allowing for discreet entry and exit if necessary. Additionally, there are restrooms conveniently located in each suite. The development encompasses several similar brick buildings, ensuring an abundance of parking spaces for you, your clients, customers, and staff. A tucked-away office park dumpster is available for tenants. The community also offers mailboxes for hassle-free outgoing and incoming mail, along with convenient FedEx and UPS drop boxes. Positioned in a highly desirable location, this office space is in proximity to the Avenues of West Cobb, offering easy access to a wealth of restaurants and shopping options. With excellent connectivity to Barrett Pkwy, the Marietta Square, Powder Springs, and Dallas from all directions, this location is ideal for seamless commuting.







Amy Mollohan

Marietta Office

c. 678.570.0550 | o. 404.480.8805
AMY@MOLLOHANREALESTATE.COM
MOLLOHANREALESTATE.COM

AM
&co.

your trusted advisor.

ANSLEYRE.COM

218 Roswell Street Suite 100, Marietta, GA 30060 | 404.480.8805

Alpharetta | Athens | Blue Ridge | Buckhead | Intown | Marietta | Peachtree City

If you have an existing relationship with another brokerage, this is not intended as a solicitation. All data believed to be accurate but not warranted. Ansley upholds Equal Housing Opportunity & Federal Fair Housing policies.

ANSLEY
REAL ESTATE

CHRISTIE'S
INTERNATIONAL REAL ESTATE



Leading

REAL ESTATE
COMPANIES
IN THE WORLD



LUXURY
PORTFOLIO
INTERNATIONAL



CROSSCOUNTRY
MORTGAGE