



"The Luck of the Irish"

An NGC Standard Holiday Flower Show

**Presented by
Manatee River Garden Club
3120 1st Ave West
Bradenton, Florida 34205
(941) 773-8435**



**March 13, 2026, 2pm - 4pm
March 14, 2026, 10am - 3pm**



**Member of
National Garden Clubs, Inc.
Deep South Garden Clubs, Inc.
Florida Federation of Garden Clubs, Inc.
District VIII**



**Open and free to the public
Wheelchair accessible**



Chair's Message

It is said that everyone has a “wee bit” of Irish in them, especially around Saint Patrick’s Day! I hope this flower show brings that out in all who come to see it. I am so happy to welcome you to our flower show: **“Luck of the Irish”**.

A great deal of work has gone into the planning and implementation of the show. The committee has worked tirelessly to present a fun and inspirational show for you.

I would like to thank all involved; the committee, the volunteers, our wonderful Garden Club, all the designers, gardeners, the crafts people and our wonderful judges. Without you, this would not be possible!

That being said, may the **Luck of the Irish** possess you. Let the Shenanigans begin!

Carol Friedman, Chair

May there always be work
for your hands to do.
May your purse always hold
a coin or two.
May the sun always shine
on your windowpane.
May a rainbow be certain
to follow each rain.
May the hand of a friend
always be near you.
May God fill your heart with
gladness to cheer you.

- An Irish Blessing



TABLE OF CONTENTS

Chair's Message.....	2
Table of Contents.....	3
Committee Chairs.....	4
General Rules.....	5
Purposes of an NGC Flower Show.....	6
Standard System of Awarding.....	6
NGC Top Exhibitor Awards.....	7
 DIVISION I: DESIGN “Phrase, Prose and Song of Ireland”	
Design Rules.....	9
Design Scale of Points.....	10
Design Sections and Classes.....	10
 DIVISION II: HORTICULTURE “The Emerald Isle”	
Horticulture Rules.....	13
Horticulture Scale of Points.....	16
Horticulture Sections and Classes.....	17
 DIVISION III: BOTANICAL ARTS “Irish Folklore”	
Botanical Arts Rules.....	20
Botanical Arts Scale of Points.....	22
Botanical Arts Sections and Classes.....	23
 DIVISION IV: EDUCATION “Trinity College”	
Education Rules.....	26
Education Scale of Points.....	26
Education Sections and Classes.....	27
Flower Show Layout.....	28



COMMITTEE CHAIRS

MRGC President: Melanie Koester..... 704-253-9441, halseym@yahoo.com
 Flower Show Chair: Carol Friedman..... 941-238-8561, friedymom@aol.com
 Schedule: Carol Friedman..... 941-238-8561, friedymom@aol.com
 Janice Hamlin..... 941-713-6804, hamwoman@aol.com
 Cathy Willard..... 941-524-6530, bccwillard@aol.com
 Staging: Carol Friedman..... 941-238-8561, friedymom@aol.com
 Focal Area: Tamara Zelaya..... 941-524-7842, zelaya.tamara@gmail.com
 Judges: Rita Mixer..... 203-981-0247, rit8@aol.com
 Clerks and Hostesses: Barbara Beury..... 941-795-4621, beuryb@gmail.com
 Awards: Susan O'Donnell..... 908-489-2127, greenthumbsfo@gmail.com
 Publicity: Crystal Herald..... 941-224-4558, clherold@gmail.com
 Hospitality: Rita and Jay Obeid..... 561-302-3556, mrgchospitality@gmail.com
 Book of Evidence: Carol Friedman..... 941-238-8561, friedymom@aol.com

Division I: Design

Classification, Entries and Placement:

Mary Roby..... 941-896-4361, mlrnvr@aol.com

Consultants:

Designer's Choice: Mary Roby..... 941-896-4361, mlrnvr@aol.com

Challenge: Janice Hamlin..... 941-713-6804, hamwoman@aol.com

Division II: Horticulture

Classification and Entries: Janice Hamlin.... 941-713-6804, hamwoman@aol.com

Placement: Cathy Willard..... 941-524-6530, bccwillard@aol.com

Linda Fountain..... 734-755-0661, lindaafountain@verizon.net

Division III: Botanical Arts

B.A. Photography: Cathy Willard..... 941-524-6530, bccwillard@aol.com

B.A. Design: Lori Richie..... 941-713-4884, loririchie@cs.com

B.A. Horticulture: Carol Friedman..... 941-238-8561, friedymom@aol.com

Division IV: Education

Entries: Betsy Currier..... 781-883-4741, betsycurrier276@gmail.com

GENERAL RULES

Handbook for Flower Shows (HB)
Chapter 3, pp.24-25



1. This Flower Show conforms to the standards established by *National Garden Clubs, Inc (NGC)*. *The Handbook for Flower Shows (HB)* as updated with revisions posted on the NGC website, is the authority for all issues not covered by the schedule, which is the “Law of the Show”. An updated copy of the *The Handbook for Flower Shows* may be downloaded from the NGC website at www.gardenclub.org.
2. Competition in the Design and Botanical Arts Divisions is open to exhibitors who are members of *Florida Federation of Garden Clubs, Inc. (FFGC)*. Competition in the Horticulture and Education Divisions is open to all exhibitors in Florida.
3. Persons wishing to place entries in this Flower Show must consult the rules for each Division for specific information. All entries must be pre-registered with the appropriate Entries Chairman. Registration deadlines: Design, Botanical Arts and Education: **February 23, 2026**, Horticulture: **February 26, 2026** and are listed in the **Rules for each Division**. Refer to Committee Chairman directory on p.4 of this Schedule. Registration forms are available on-line on the Manatee River Garden Club (MRGC) website: **www.manateerivergardenclub.com** Flower Show page.
4. All entries will be accepted and placed at MRGC according to rules as specified in each Division’s Rules.
5. See Entry Tag and Entry Card information in the Rules for each specific Division.
6. The Classification Chairmen for each division check exhibits for conformity to the schedule prior to judging. Final determination for conformance is the judge’s responsibility.
7. Exhibitors must have entries checked before leaving the area.
8. There must be an emphasis on FRESH plant material. No artificial plant material is permitted in any exhibit in any Division.
9. Each exhibitor is limited to one entry per class, except in the Horticulture Division and Botanical Arts Horticulture Section. Exhibitor may make more than one entry per class if each is a different species variety, cultivar, type or color.
10. Manatee River Garden Club, Inc will strive to assure the safety of all items after arrival and placement but is not responsible for loss or damage to exhibits.
11. The use of plant material classified as Federal Noxious is prohibited. Reference: https://www.aphis.usda.gov/plant_health/plant_pest_info/weeds/downloads/weedlist.pdf

12. The use of plant material classified as noxious or invasive in Florida is prohibited. Reference: <https://www.fdacs.gov/Agriculture-Industry/Pests-and-Diseases/Plant-Pests-and-Diseases/Noxious-Weeds>
13. The use of plant material classified as noxious or invasive in Florida is prohibited. Reference: <https://www.fdacs.gov/Agriculture-Industry/Pests-and-Diseases/Plant-Pests-and-Diseases/Noxious-Weeds>
14. The use of plant material on Florida's Federally Listed Plant as Endangered or threatened is prohibited. Reference <https://plants.usda.gov/java/threat?statelist=states&stateSelect=US12>
15. Judging will begin at 10:00am on **Friday, March 13, 2026**.
16. Judges will be encouraged to award 90+ scores if warranted.
17. The General Chairman and the Classification Chairman for each Division will be available during judging for possible consultation. They, along with the judges and clerks, are the only personnel allowed on the floor during judging.
18. The decisions of the judges are final. Awards may be withheld if not merited.
19. All exhibits **MUST** be removed from MRGC on **Saturday, March 14, 2026** between 3:00pm and 6:00pm. Any items not removed by 6:00pm will be disposed of without notice.



PURPOSES OF AN NGC FLOWER SHOW

HB p.1

1. To educate club members and the viewing public.
2. To stimulate interest in horticulture and floral design.
3. To provide an outlet for creative expression.
4. To communicate the goals and objectives of NGC.

STANDARD SYSTEM OF AWARDING

HB, Chapter 5, p.25

The NGC standard system of awarding is used in all divisions. The award will be withheld if the exhibit does not meet the point value for the ribbon.

Only one (1) first-place (blue) ribbon per class or subclass; must score 90 points or more.

Only one (1) second-place (red) ribbon per class or subclass; must score 85 points or more.

Only one (1) third-place (yellow) ribbon per class or subclass; must score 80 points or more.

One or more Honorable Mention (white) ribbons as merited; must score 75 points or more.



NGC TOP EXHIBITOR AWARDS

DIVISION AND SECTION AWARDS

The NGC standard system of awarding is used in all divisions. *HB p.25*

Entry cards of blue ribbon and 90+ exhibits must be signed and dated by an NGC accredited judge on the panel. All other entry cards must be marked to indicate that the exhibit has been judged.

DIVISION I - DESIGN

HB Chapter 5 pp.42-43

Section Awards offered:

Awards offered to the highest scoring blue ribbon exhibit scoring 95 or more.

Section A: One (1) Designer's Choice Award

A rosette of purple ribbons *HB p.42*

DIVISION II - HORTICULTURE

HB Chapter 5 pp.40-41

Division Top Exhibitor Award offered:

One (1) award may be offered to the highest scoring blue ribbon exhibit scoring 95 or more in the entire Horticulture Division.

One (1) Award of Horticultural Excellence

A rosette of green, orange and blue ribbons *HB p.40*

Section Awards offered:

Awards offered to the highest scoring blue ribbon exhibit scoring 95 or more.

Sections A, Classes 1-11 and B, Classes 12-19:

Award of Merit

A rosette of orange ribbons *HB p.41*

**Sections C, Classes 20-24; D, Classes 25-29;
E, Classes 30-43; F, Classes 44-47;
G, Classes 48-60; H, Classes 61-67 and
J, Classes 68-71:**

Grower's Choice Award

A rosette of dark green ribbons *HB p.41*

Section I, Classes 72-74: Arboreal Award

A rosette of green ribbons *HB pp.40-41*

DIVISION III - BOTANICAL ARTS

HB Chapter 5 pp.44-45

Section Awards offered:

Awards offered to the highest scoring blue ribbon exhibit scoring 95 or more.

Section A: One (1) Botanical Arts Photography Award

A rosette of black and white ribbons, *HB p.45*

DIVISION IV - EDUCATION

HB Chapter 5 pp.43-44

Division Top Exhibitor Award offered:

One (1) Educational Top Exhibitor Award

A rosette of brown and white ribbons, *HB p 43-44*



DIVISION I: DESIGN DESIGN RULES

Handbook Chapter 3, pp.28-29



1. The NGC Design Exhibit Policies are printed in the *Handbook for Flower Shows*, Chapter 7, Design, NGC Policies and Guidelines pp.79-80
2. Advance registration is required by **February 22, 2026** with the Design Entries Chair or Consultant, either by phone or email (see Committee Chairmen Directory on page 4). Registration forms are available on the MRGC website: **www.manateerivergardenclub.com**, Flower Show page.
3. Plant material and non-plant material permitted and not permitted in the Design Division are printed in the *Handbook for Flower Shows*, Chapter 7, pp.80-81.
4. All plant material used in the design must be identified on a 3" x 5" card, provided by the exhibitor and included with the entry card..
5. The exhibitor is required to conform to the stated description and limitations of the Design type if named in the class.
6. Rules for Design Types, Advanced Design Types, Table Designs and Table Appointments are printed in the *HB*, Chapter 7, pp.73-79.
7. The designer is on his/her honor that the design has not been previously entered or previously judged in an NGC Flower Show.
8. The Scale of Points for Designs listed in the *HB*, Chapter 14, p.130 and listed on page 10 of this schedule.
9. Designer has the freedom to choose traditional or creative style with any design unless restricted by the schedule.
10. Designs must be the work of one individual as listed on the entry card.
11. Exhibitor may enter multiple classes in the Design Division but only one exhibit per class.
12. Some plant material fresh and/or dried must be used in every exhibit.
13. Fresh plant material may not be treated in any manner. Dried plant material may be treated.
14. Plant material need not be grown by the exhibitor.
15. All staging provided by committee unless otherwise stated.
16. Pre-printed entry cards will be located at the exhibit placement site. Exhibitor must check card for accuracy.
17. Each class is limited to four (4) entries.
18. Entry must be the work of one individual..
19. Designs will be placed on **Thursday, March 12, 2026**, from 9:00am to 6:00pm.
20. The Classification Chair will check each entry for conformance before designer leaves the placement area. Each designer will initial check the list on page 4
21. If the designer is unable to fulfill the assignment, it is the designer's responsibility to find a replacement.

22. If the designer is unable to transport and/or set up the design, a substitute may enter the completed design for the designer.
23. The judges will use the NGC Standard System of Awarding as described in the *HB, Chapter 1, p.5*. Awards may be withheld if not merited. Decisions of the judges are final.
24. All designs must be removed on **Saturday, March 14, 2026** between 3:00pm and 6:00pm. Any items not removed by 6:00pm will be disposed of without notice.

Design Scale of Points

HB p.130

Conformance	
to type.....	7
to Schedule requirements..	7
Design Principles	48
Selection of Components.....	8
Organization of Components..	8
Expression.....	8
Distinction.....	14
TOTAL SCORE.....	100

DIVISION I: DESIGN

“Phrase, Prose and Song of Ireland”

“Dance as if no one’s watching, sing as if no one’s listening, and live everyday as if it were your last.”

SECTIONS AND CLASSES

Section A: “Irish Tunes”. *“May your day be touched by a bit of Irish luck, brightened by a song in your heart, and warmed by the smiles of the people you love.”*

Designs eligible for a Designer’s Choice Award.

Consultant: Mary Roby: 941-896-4361, mlrnvr@aol.com

Class 1: “Linen & Lace”

A functional dinner for two, staged on a card table, 33” X 33” X 26” tall. Designer to supply table covering. Designer’s choice of fresh and/or dried plant material and components. *HB p.43* 4 exhibits)

Class 2: “I’m Looking Over a Four Leaf Clover”

A functional, alfresco picnic lunch for two, *HB p.76*. Staged in an area measuring 36” x 36” on the floor, marked by tape. Area will be covered with green artificial turf. A small green bench, measuring 24” long x 10” wide x 12.5” high is provided by committee and may be or not be used by exhibitors. Designer’s choice of fresh and/or dried plant material and components. *HB p.43*
Exhibits are to be judged from a standing position.
Frame of reference 36” x 36”, height unrestricted.
(4 exhibits)

Class 3: “Sweet Molly Malone”

“In Dublin's fair city
Where the girls are so pretty
I first set my eyes on sweet Molly Malone
As she wheeled her wheelbarrow
Through the streets, broad and narrow
Crying, "Cockles and mussels, alive, alive, oh".”

A **Creative Design** of Designer's Choice staged on a natural wood pedestal with a 24" square top, 38" tall. Background is a black panel, 81" tall. Frame of Reference 24" wide X 24" deep X 38" high.

Designer's choice of fresh and/or dried plant material and components. *HB p.43.* (4 exhibits)

Class 4: “When It's Moonlight in Mayo.”

“Loving Irish arms will press me,
With true Irish love caress me,
And sweet Irish lips will bless me,
When it's Moonlight in Mayo.”

An **Illuminary Design**, staged on black pedestal with a 20" square top, 38" tall. Background is a black panel, 81" tall. Frame of reference 20" wide X 20" deep X 43" high.

Designer's choice of fresh and/or dried plant material and components. *HBp.43* (4 exhibits)



Section B: Irish Proverbs and Blessings: "There's nothing so bad that it couldn't be worse."

Consultant: Janice Hamlin; 941-713-6804,
hamwoman@aol.com

Class 5: "May green be the grass you walk on, that pure be the joys that surround you and may true be the hearts that love you."

Challenge: An All Foliage Design *HB p.78:* Identical components and mechanics will be provided by committee. Designer must provide clippers, scissors, wire cutters or knife to cut plant material. No other mechanics are allowed. Designs will be placed on **Thursday, March 12th at 1:00pm**. Designers have one hour to complete their design.
Staged on a pedestal with a 20" square top, 38" tall.
Background is a cream colored wall.
Frame of reference 20" wide X 20" deep (no height restriction.) (4 exhibits)





DIVISION II: HORTICULTURE

HORTICULTURE RULES

Handbook, Chapter 3, pp.27-28.

1. The NGC Exhibit Policies are printed in the *Handbook for Flower Shows*, Chapter 6, *Exhibiting in the Horticulture Division*.
2. The rules for a single species cut or container-grown specimen are listed in the *Handbook for Flower Shows* or its supplement *Horticulture Exhibiting and Judging*.
3. In order to receive an NGC Top Exhibitor Award, the exhibitor must identify his/her entry by its binomial name or currently acceptable scientific designation. (Consult *Handbook for Flower Shows*, Chapter 6, *Exhibiting in the Horticulture Division*.)
4. Advance registration required by **Thursday, February 26, 2026** with the Horticulture Entries Chair (see page 4) either by mail or email. Registration forms are available on the MRGC website www.manateerivergardenclub.com, Flower Show page. Entry cards will be completed by the Entry Chair/Committee. Exhibitor will check all spelling and initial the card if information is correct.
5. On the registration form, all entries are to be named by genus, specific epithet, variety and/or cultivar or patented/trademark names. Common names may also be given. This information will be used for the entry tags.
6. Cut specimens should not have foliage below the water line, except for *Gladiolus*.
7. If a plant is considered a flowering plant, it should be exhibited as a flowering specimen. Foliage plants may flower, but should be exhibited as foliage if they are grown for their leaves.

8. Specimens with a class designation in the Schedule may not be entered in the “Any Other Worthy” class.
9. The Horticulture Chair and/or Show Chair are free to subdivide classes by color, form, size, cultivar, variety or other distinguishing characteristics.
10. The Scales of Points for Horticulture are located in the *HB*, *Chapter 14, pp.129-130* and are printed on page 16 of this Schedule.
11. All exhibits must be fresh and must have been grown by the Exhibitor.
12. Plant material must be in its natural state and may not have been altered by application (treatment) of oil, commercial “shine” products, etc., that change the appearance. No wiring of specimens is permitted.
13. All plant material must have been in the possession of the exhibitor the appropriate number of days: **Combination Plantings**; 6 weeks, **Annuals**: 90 days, with the exception of forced bulbs such as amaryllis for which there is no minimum, **Houseplants**: 90 days, **Perennials**: (Herbaceous) 90 days, **Arboreals**: 6 months and **Troughs**: 6 months *HB p.55*
14. Only foliage and/or flower naturally grown and still attached to the specimen are permitted In the Flower Shows. Unattached foliage is never included with a cut bloom specimen.
15. All Container-Grown entries must be delivered to Manatee River Garden Club on **Wednesday, March 11, 2026** between 9:00am and 3:00pm. Cut specimens may be delivered on **March 11th, 2026** between 9:00am and 3:00pm. In addition, **ONLY CUT SPECIMENS** may be delivered on **Thursday, March 12, 2026**, between 9:00am and 10:00am. If necessary, exhibitors may replace a wilted cut specimen on **Friday, March 13th, 2026**, between 8:00am and 9:00am.
16. In combination plantings, each specimen must be correctly and clearly labeled with the current scientific designation and in a manner to easily identify the specimen’s location in the garden. This may be done with a single chart or individual placards.

17. Exhibitor may enter more than one entry per class but NOT of the same variety, cultivar, type, size or color unless stated otherwise in the Schedule.
18. All entries and entry tags will be checked by the classification Committee before placement and before the exhibitor leaves the placement area. They may disqualify any entry that does not conform to the Schedule or that is of inferior quality. The decision of the Classification Chair is final.
19. All entries must be of fresh and of superior quality, clean and well groomed. Containers must be clean and appropriate to the plant. Unless specified differently under individual Sections of the Schedule, containers are not to exceed 12" in any direction as measured across the top of the container.
20. Only one plant per container unless it is naturally spreading.
21. Exhibitors are limited to no more than two (2) entries per section with a maximum of ten (10) entries per exhibitor.
22. Container-Grown plants may not weigh more than 20 pounds.
23. Double potting is permitted but the inner pot must not be visible.
24. For cut specimens, transparent green glass containers and cellophane wrap for wedging will be provided by committee.
25. Hanging plants must have hangers removed or hidden. Exhibits will be staged on tabletops. Committee will provide staging to elevate these entries if needed (elevated plant stands, pedestals, etc.)
26. All exhibits MUST be removed from MRGC on **Saturday, March 14, 2026**, between 3:00pm and 6:00pm. Any items not removed by 6:00pm will be disposed of without notice.



Horticulture Scales of Points

All Cut or Container-Grown Horticulture Specimens

HB p.129

Conformance.....	5
Plant identification.....	5
Peak of Perfection	
Form.....	20
Color.....	20
Maturity/Size.....	20
Condition/Blemishes.....	15
Grooming/Staging Show Worthy	
Grooming.....	10
Staging.....	5

Total..... 100

Combination Plantings and Gardens

HB p.129

Conformance.....	5
Plant identification.....	5
Labeling.....	5
Peak of Perfection	
Form.....	10
Color.....	10
Condition.....	10
Size.....	5
Overall Effect.....	30
Creative/Distinctive.....	5
Grooming.....	10
Staging.....	5

Total..... 100

may your day be
TOUCHED
 BY a bit of irish
 LUCK
 brightened by a SONG
 IN YOUR
HEART
 & warmed
 BY THE
SMILES
 OF THE people
 YOU
LOVE

DIVISION II: HORTICULTURE

“The Emerald Isle”

“Lovely Ireland is Home to Many Outstanding Landmarks”

Eligible for Award of Horticultural Excellence

SECTIONS AND CLASSES

Section A: “Killarney National Park”

Cut Stem of Tropical Foliage HB p. 59

Eligible for one (1) Award of Merit. Staging provided by committee. One leaf or stem with apical tip and several nodes and the central leader. Length must be appropriate to the plant growth but may not exceed 30”. Containers and wedging provided by committee.

Class 1 *Alpinia*

Class 2 *Asparagus*

Class 3 *Aspidistra*

Class 4 *Cordyline*

Class 5 *Dracaena*

(excluding *Sansevieria*)

Class 6 *Dracaena trifasciata*

(*Sansevieria*)

Class 7 *Monstera*

Class 8 *Philodendron*

Class 9 *Stromanthe*

Class 10 *Thaumatococcus*

(*T. bipinnatifidum* – split leaf
philodendron) & (*T. xanadu*)

Class 11 Any other worthy named
specimen

Section B: “National Botanic Gardens”

Cut Flowers or Bracts from Perennials HB p. 59

Eligible for one (1) Award of Merit. Staging provided by committee. One stem, not to exceed 30” in length. Containers and wedging provided by committee.

Class 12 *Anthurium*

Class 13 *Bromeliad*

Class 14 *Crossandra*

Class 15 Orchid

Class 16 *Rosa*

Class 17 *Salvia*

Class 18 *Strelitzia*

Class 19 Any other worthy named
specimen

Section C: “Cliffs of Moher”

Orchids – Container Grown or Mounted HB p. 58

Eligible for one (1) Grower's Choice Award.

Class 20 *Cattleya*

Class 21 *Dendrobium*

Class 22 *Phalaenopsis*

Class 23 *Vanda*

Class 24 Any other worthy named
specimen

Section D: “Kilkenny Castle”

Flowering Plants (excluding Orchids & Bromeliads) – Container Grown

HB p. 58

Eligible for one (1) Grower’s Choice Award.

Class 25 *Anthurium*

Class 28 *Spathiphyllum*

Class 26 *Begonia*

Class 29 Any other worthy named specimen

Class 27 Gesneriad

– note: *Streptocarpus ionanthus* is now the accepted name for African violet.

Section E: “Connemara National Park”

Foliage Plants (excluding Bromeliads & Succulents) – Container Grown

HB p. 58

Eligible for one (1) Grower’s Choice Award.

Class 30 *Aglaonema*

Class 38 *Goeppertia* (Calathea)

Class 31 *Alocasia*

Class 39 *Peperomia*

Class 32 *Begonia*

Class 40 *Philodendron*

Class 33 *Dieffenbachia*

Class 41 *Plectranthus*

Class 34 *Dracaena*

Class 42 *Thaumatococcus*

Class 35 *Epipremnum* (Pothos)

(*T. xanadu* & *T. bipinnatifidum*)

Class 36 *Farugium*

- split leaf philodendron)

Class 37 Ferns

Class 43 Any other worthy named specimen

Section F: “Spike Island”

Cactus – Container Grown for Foliage HB p. 58

Eligible for one (1) Grower’s Choice Award.

Class 44 *Epiphyllum*

Class 46 *Rhipsalis*

Class 45 *Mammillaria*

Class 47 Any other worthy named specimen

Section G: “Gap Of Dunloe”

Succulents other than Cacti - Container Grown for foliage HB p.58

Eligible for one (1) Grower’s Choice Award.

Class 48 *Agave*

Class 54 *Gasteria*

Class 49 *Aloe*

Class 55 *Graptopetalum*

Class 50 *Boweia*

Class 56 *Haworthia*

Class 51 *Crassula* (Jade plant)

Class 57 *Hoya*

Class 52 *Echeveria*

Class 58 *Kalanchoe*

Class 53 *Euphorbia* Herbaceous

Class 59 *Portulacaria*

a. Woody

Class 60 Any other worthy named specimen

b. Cactus-like

Section H: “Wild Atlantic Way”

Bromeliads – Container Grown or mounted HB p. 58

Eligible for one (1) Grower’s Choice Award.

Class 61 *Cryptanthus*

Class 62 *Dyckia*

Class 63 *Guzmania*

Class 64 *Neoregelia*

Class 65 *Tillandsia*

Class 66 *Vriesea*

Class 67 Any other worthy named specimen

Section I: “St. Stephens Green”

Arboreal – Cut Specimen HB p. 59

Eligible for one (1) Arboreal Award

Class 68 *Codiaeum variegatum*
(Croton)

Class 69 *Ixora*

Class 70 *Jatropha*

Class 71 Any other worthy named specimen

Section J: “Kylemore Abbey & Victorian Walled Garden”

Combination Plantings HB p. 59

A grouping of three (3) or more botanically different plants with similar cultural requirements such as light, water, and humidity. Natural accessories permitted in all Combination Plantings but must be in scale with plantings and container, and theme appropriate to the plants. Include a “map” or “drawing” indicating where each plant is located.

Eligible for one (1) Grower’s Choice Award

No container is to exceed 16” in any direction when measured across the top of the container.

Class 72 Herb Planter - a grouping of herbs in an indoor or outdoor container. Plants can be foliage, flowering or a combination of foliage and flowering.

Class 73 Succulent Planter - a grouping of succulent plants in an appropriate container.

Class 74 Non-succulent, Foliage and/or Flowering planter.



DIVISION III: BOTANICAL ARTS

GENERAL RULES

1. All General Rules apply.
2. All Botanical Arts Designs and Horticulture must contain some plant material.
3. No artificial plant material permitted in any exhibit.
4. The Scale of points for judging Botanical Arts Horticulture, Design and Photography are listed in *Chapter 14 of the Handbook for Flower Shows* and are listed on page 22 of this schedule.
5. The Rules for all Botanical Arts sections are printed in Chapter 10 of the Handbook for Flower Shows, Chapter 10.
6. The General Guidelines for all Designs apply as printed in Chapter 7 of the *Handbook for Flower Shows*, including a card provided by the exhibitor and listing plant material used in the design apply.
7. Registration in advance by **Monday, February 23, 2026** with the appropriate consultant. Registration forms are available on the MRGC website, www.manateerivergardenclub.com, Flower Show page.

Section A: Photography *HB pp.95-96*

1. Advance registration required by **Monday, February 23, 2026** with the Photography Chair, Cathy Willard, 941-524-6530, bccwillard@aol.com either in person or by email.
2. Section A is intended to stimulate interest in garden/gardening interest, photographic abilities and NGC goals and objectives and is open to all amateur photographers.
3. All exhibits must relate to horticulture, gardening, design, or other NGC goals, objectives and/or initiatives.
4. Each class is limited to four (4) entries.
5. An exhibitor may enter as many classes as desired but is limited to only one entry per class.
6. Photographs must be submitted to the Photography Chair, Cathy Willard by **Monday, March 9, 2026**.
7. All photographs will be judged by a three person panel comprised of photography professionals *HB p.96*.
8. Exhibits are judged by the Photography Scale of Points, *HB p.130* and listed on page 19 of this Schedule.
9. Exhibits are eligible for the Botanical Arts Photography Award if all requirements are met.
10. An entry must be a color photo (no collage), mounted on a mat or foam core of any color and larger than the photo to allow a 1" to 3" border on all sides.
11. In all classes, it is the exhibitors choice of portrait or landscape orientation. Exhibitor must indicate the top of the image by writing TOP on the corresponding area of the back of the mat or foam board.

12. The size of the photograph may range anywhere between 5" X 5" up to 11" X 14".
13. Exhibitors are encouraged to identify photographed plant material, preferably with the current scientific designation. This information should be provided on the registration form and the back of the mat or foam core attached to the photograph.
14. No frames or glass permitted.
15. Images will be displayed vertically at eye level staged on cream colored panels or walls for judging and viewing.
16. The photograph may be enhanced to include in-camera changes and post production changes, to include cropping, filters, adjustments and/or darkroom techniques.
17. Hanging devices will be supplied by committee for staging purposes.

Section B: Botanical Design *HB pp.93-94*

1. Advance registration required by **Monday, February 23, 2026** with the Botanical Design Chair, either in person or by email.
2. Exhibit must contain some fresh and/or dried plant material. Only dried plant material may be treated.
3. Maximum weight of exhibit is 20 lbs.
4. No artificial, endangered or locally invasive plant material may be used.
5. All exhibits will be judged using the Design Scale of Points, *HB p.130* and listed below.
6. Exhibits are eligible for the Botanical Arts Design Award if all requirements are met.
7. Classes are limited to four (4) entries. An exhibitor may enter as many classes as desired but is limited to only one entry per class.
8. Pre-printed entry cards will be located at the exhibit placement site. Exhibitor must check card for accuracy.
9. Exhibitor must provide a 3" X 5" card for each entry listing the names of all plant materials used in the design.

Section B: Botanical Horticulture *HB pp.91-92*

1. Advance registration required by **Monday, February 23, 2026** with the Botanical Horticulture Chair, either in person or by email.
2. Emphasis is not necessarily on the plant material, but the exhibit must contain three (3) or more botanically different plants with similar growing conditions *HB pp.92, 59*

3. All plant material must have been in the possession of the exhibitor and grown together for six (6) weeks.
4. No artificial, endangered or locally invasive plant material may be used.
5. Each specimen must be correctly and clearly labeled with the current scientific designation and in a manner to easily identify the specimen's location in the garden. This may be done with a single chart or individual placards.
6. Exhibits are judged by the Combination Plantings Scale of Points.
7. Exhibitor must provide a 3" X 5" card for each entry listing the names of all plant materials used in the exhibit.
8. Exhibit must be delivered to Manatee River Garden Club on **Wednesday, March 11, 2026** between 9:00am and 3:00pm.

BOTANICAL ARTS SCALES OF POINTS	
Photography <i>HB p.131</i> Conformance..... 5 Interpretation of Class Title..... 10 Composition..... 25 Artistry/Creativity..... 25 Technical Achievement..... 25 Distinction..... 10 TOTAL SCORE.....100	Design <i>HB p.130</i> Conformance to type..... 7 to schedule requirements..... 7 Design Principals..... 48 Selection of Components..... 8 Organization of Components..... 8 Expression..... 8 Distinction..... 14 TOTAL SCORE.....100
Combination Plantings and Gardens <i>HB p.129</i> Conformance..... 5 Plant identification..... 5 Labeling..... 5 Peak of Perfection Form..... 10 Color..... 10 Condition..... 10 Size..... 5 Overall Effect..... 30 Creative/Distinctive..... 5 Grooming..... 10 Staging..... 5 Total..... 100	

DIVISION III: BOTANICAL ARTS

“Irish Folklore”

“Red Rose, proud Rose, sad Rose of all my days!
Come near me, while I sing the ancient ways”

SECTIONS AND CLASSES

Section A: Photography: “A trip across the Emerald Isle will leave you with a bucket full of memories to pass on.”

Photos eligible for a **Botanical Arts Photography Award**. *HB pp.95-96*.
Photographs must be in color. Exhibitor must consult and apply schedule
Photography Section Rules.

Consultant: Cathy Willard 941-524-6530, bccwillard@aol.com

Class 1: “Chasing Rainbows”

In Irish folklore, rainbows are a potent symbol of hope, good fortune and hidden treasure, most famously associated with leprechauns who are said to guard a pot of gold at the rainbow's end.

A photo of a rainbow. (4 exhibits)

Class 2: “My Wild Irish Rose”

In Ireland, roses don't always grow in neatly pruned rows, with wild rose bushes climbing around hedgerows, over fences in rural gardens and adorning the doorways of thatched cottages.

A photo of rose or roses. (4 exhibits)

Class 3: “Lighthouse Legends”

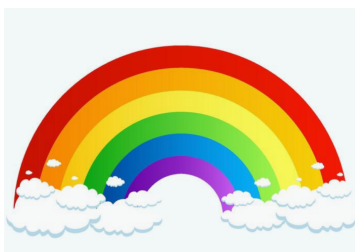
Lighthouses represent a connection to the island's rich maritime history, resilience, hope, and the journey of emigrants.

A photo of a lighthouse. (4 exhibits)

Class 4: “Green Spaces in Green Places”

Green is associated with Irish legends and national identity through its connection to the country's lush landscape, hence the "Emerald Isle" and the myth of the leprechaun.

A photo within a local preserve or park (4 exhibits)



Section B: Botanical Arts Design: **"He who travels has memories to keep and stories to tell."**

Designs eligible for a **Botanical Arts Design Award**. *HB p.93.*

Exhibitor must consult and apply schedule Botanical Arts Design Section Rules.

Consultant: Lori Richie 941-713-4884, loririchie@cs.com

Class 5: "Dublin Doors"

Dublin's colorful doors represent a tale of rebellion against English rule where Dubliners painted their doors in protest of mandatory black mourning paint during Queen Victoria's reign.

A **wreath or door hanging**. Staged on a cream colored door panel, 36" wide x 80" high, hanging from a clear plastic 15" wreath hanger to be supplied by committee. Frame of reference: 30" wide x 36" tall x 10" deep.

(4 exhibits)

Class 6: "Shamrocks"

The shamrock is a symbol of Ireland, used by St. Patrick to symbolize the Holy Trinity.

A **collage**. Staged on a cream colored door panel, 36" wide x 80" high, hanging from a clear plastic 15" wreath hanger to be supplied by committee. Frame of Reference 24" wide X 30" high x 5" deep.

(4 exhibits)



Section C: Botanical Arts Horticulture :

"The Wee Folk of Ireland"

In Irish folklore, fairies and their magical, mysterious ways are often used to make sense of the indescribable or incomprehensible.

Exhibitor must consult and apply schedule Botanical Arts Horticulture Section Rules.

Consultant: Carol Friedman 941-238-8561
friedymom@aol.com

Class 7: "Fairy Life"

Irish legend has it, the 'Good People' lived all over Ireland, leaving signs along the way, showing an entrance to their world.

A Fairy Garden.



No container is to exceed 16" in any direction when measured across the top of the container.



DIVISION IV: EDUCATION

Handbook Chapter 3, pp.29-30

1. All General Rules apply.
2. Education Exhibits may be the work of more than one individual or organization unless a Student Judge or an accredited Judge is seeking exhibiting credit for preparing an educational exhibit.
3. To be eligible for the NGC Educational Award, a minimum of eighteen (18) square feet must be used.
4. Exhibitors are to supply their own staging. A 6' table is available if desired.
5. The NGC Standard System of Awarding will be used.
6. The Scale of Points for judging Education is found in the *HB p.130* and listed below.
7. Registration will be in advance by **February 23, 2026**, with the Education Chair: Betsy Currier: 781-883-4741, betsycurrier276@gmail.com.
8. No artificial plant material is permitted in an Educational Exhibit.
9. Exhibits should convey educational facts quickly and persuasively in an interesting manner. Posted material should be large enough to read from a distance of three (3) feet.
10. Handout materials add to educational value but are not required.
11. Educational value is the most important consideration.
12. Entries are to be placed **Thursday, March 12, 2026**, between 9:00am and 6:00pm at the Manatee River Garden Club.
13. Exhibits are to be removed **Saturday, March 14, 2026** between 3:00pm and 6:00pm.



EDUCATION SCALE OF POINTS	
Photography <i>HB p.131</i>	
Educational value	
Interest to viewer.....	25
Clear, concise presentation....	15
Adequate signage.....	10
Conforms to NGC objectives	10
Staging	
Craftsmanship, technique....	10
Distinction.....	10
Creativity and expression.....	20
TOTAL SCORE.....	100



DIVISION IV: EDUCATION

“Trinity College”

Trinity College Dublin is the oldest university in Ireland, dating from 1592 and houses the famous “Book of Kells”

SECTIONS AND EXHIBITS

SECTION A: “Kissing the Blarney Stone”

Kissing Ireland’s Blarney Stone, a tradition that’s been around for several centuries, is said to give a person the gift of eloquence and persuasiveness.

Exhibits eligible for an Educational Award. Exhibitor must consult and apply the schedule Education Section Rules. Exhibitor allotted a 3’ X 6’ space against a cream colored wall with windows.

Consultant: Betsy Currier: 781-883-4741, betsycurrier276@gmail.com

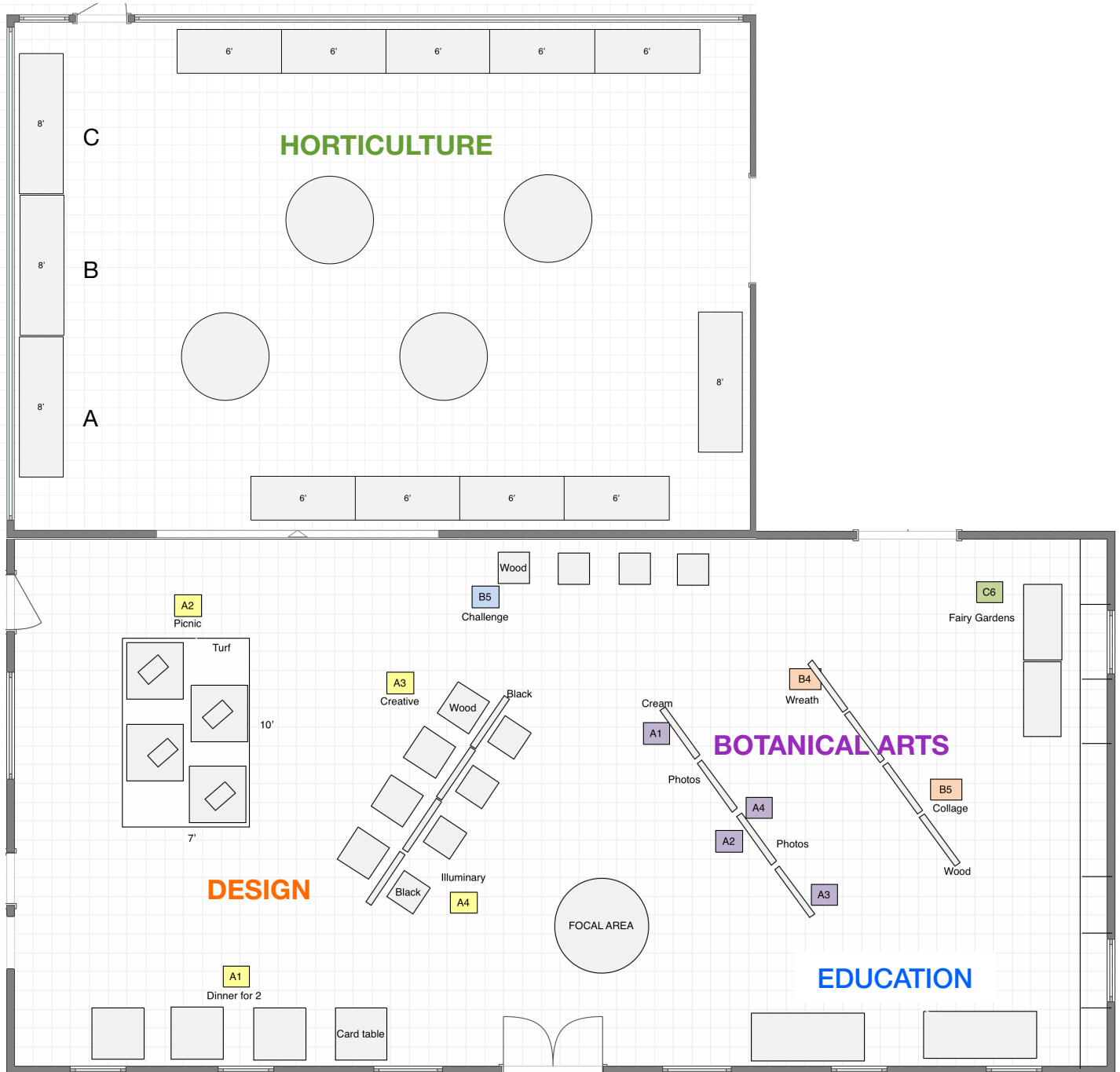
Exhibit 1: “Away with the Fairies”

Fairy Garden 101, the ins and outs of Fairy Garden construction for Flower Shows.

Exhibit 2: “The Thoughtful Bouquet”

A look at some practices, products, and plants that can make our floral designs more sustainable for the environment.

☘ Flower Show Map ☘





The Luck of the Irish Flower Show

March 13 & 14, 2026

DESIGN REGISTRATION FORM

Designs will be placed on Thursday, March 12th from 9am to 6pm.

NAME _____ Date _____

Phone No. _____ E-mail _____

Section _____ Class _____

Class Title _____

Signature _____



The Luck of the Irish Flower Show

March 13 & 14, 2026

BOTANICAL ARTS REGISTRATION FORM

Photographs must be submitted to Cathy Willard by Monday, February 23rd.
Botanical Arts Designs will be placed on Thursday, March 12th from 9am to 6pm.

NAME _____ Date _____

Phone No. _____ E-mail _____

Section _____ Class _____

Class Title _____

Signature _____



The Luck of the Irish Flower Show

March 13 & 14, 2026

HORTICULTURE REGISTRATION FORM

NAME _____ Date _____

Phone No. _____ E-mail _____

Signature _____

ALL ENTRIES MUST BE **PRE-REGISTERED** BY THURSDAY FEB. 26, 2026. LIMIT 10 ENTRIES. All Container grown entries must be delivered to Manatee River Garden Club on Wednesday, March 11th, between 9am and 3pm. Cut specimens may also be delivered on Wednesday, March 11th, between 9am and 4pm. In addition, CUT SPECIMENS ONLY may be delivered on Thursday, March 12th, between 9am and 10am. If necessary, exhibitor may replace a wilted cut specimen on Friday, March 13th, between 8am and 9am.

PLEASE MAKE ENTRIES LEGIBLE.

Section	Class	Botanical Name	Common Name

If you need help identifying your plants, contact the Horticulture Chair,
Janice Hamlin. 941-713-6804 hamwoman@aol.com