

FASTEN ANGLE OF UNIT TO CONC. SLAB W/ (2) 1/2" X 1/8" THICK GALV. MET. STRIPS, ANCHOR TO SLAB STRIPS ANCHORS AT EACH END OF STRIPS, OR AS PER MANUFACTURER'S 170 MPH WIND FORCES.

4" MIN. THICK CONC. SLAB WITH W/ 2 X W/2.0 MM W/ 1/20. 287W. LIP-DOWN TFG. WITH CONT. #3 BAR. AWAY FROM HOUSE FOUNDATION, TOP OF SLAB LEVEL WITH HOUSE SLAB. MN.

COMPRESSOR UNIT ACCESS PANEL W/ POWER CONTROL PANEL STRIPS MUST NOT INTERFERE WITH ACCESS PANEL.

THE SCOPE OF AIR CONDITIONING WORK FOR EACH OF THE 12 RESIDENCES WILL INCLUDE THE FOLLOWING SPECIFICATIONS:
 1. ALL EQUIPMENT AND DUCT SYSTEMS ARE BEING INSTALLED BY A CERTIFIED CARBERRA A. C. CORR. AUTHORIZED INSTALLER. EQUIPMENT SHALL BE INSTALLED IN ACCORDANCE WITH THE FOLLOWING MANUFACTURER'S INSTRUCTIONS FOR PURPOSES OF BIDDING AS OF 9-11-2018, WITH A/C SUB SUBMITTING CORRESPONDING DATA AND ENERGY FACTOR DATA.

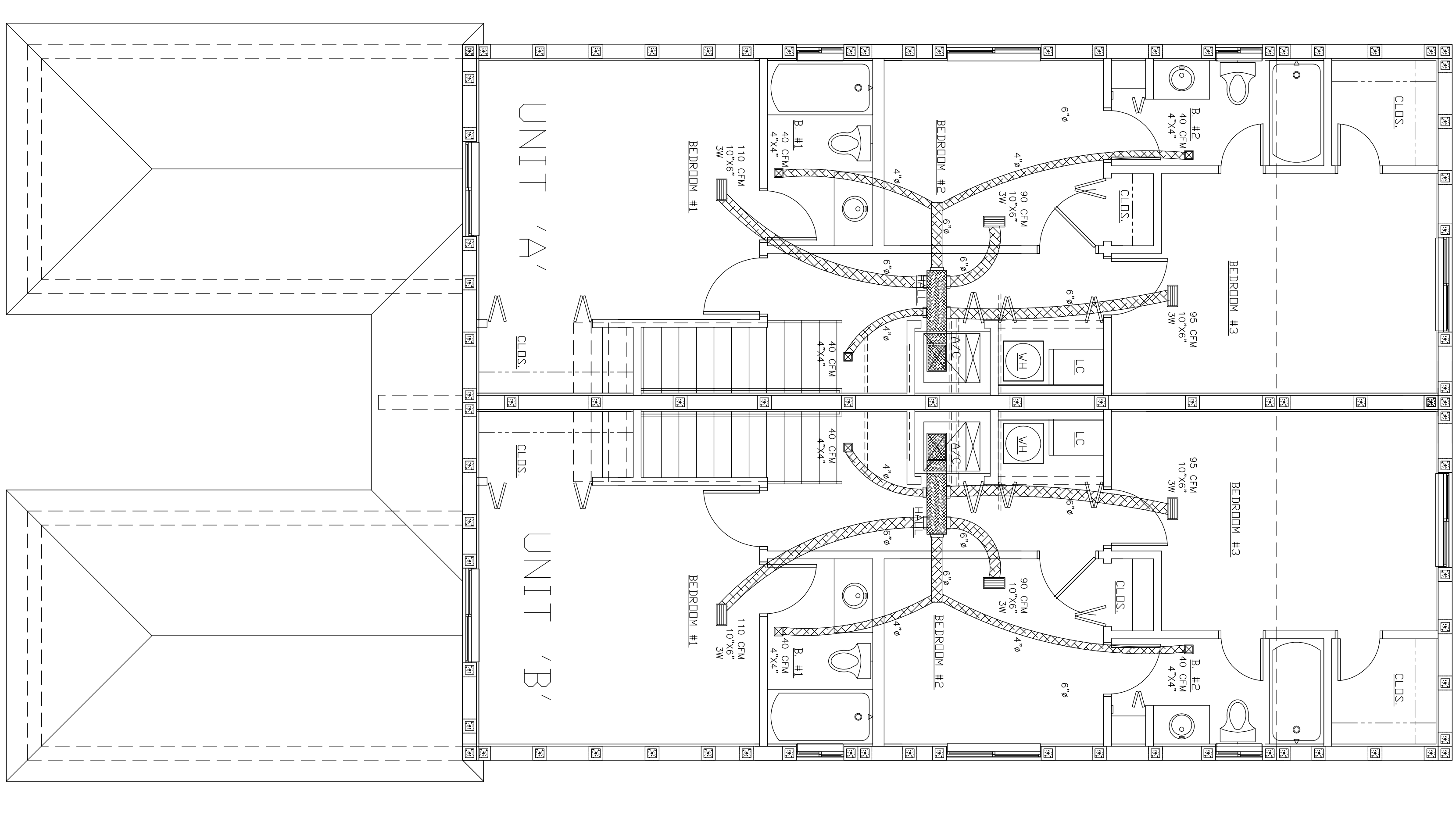
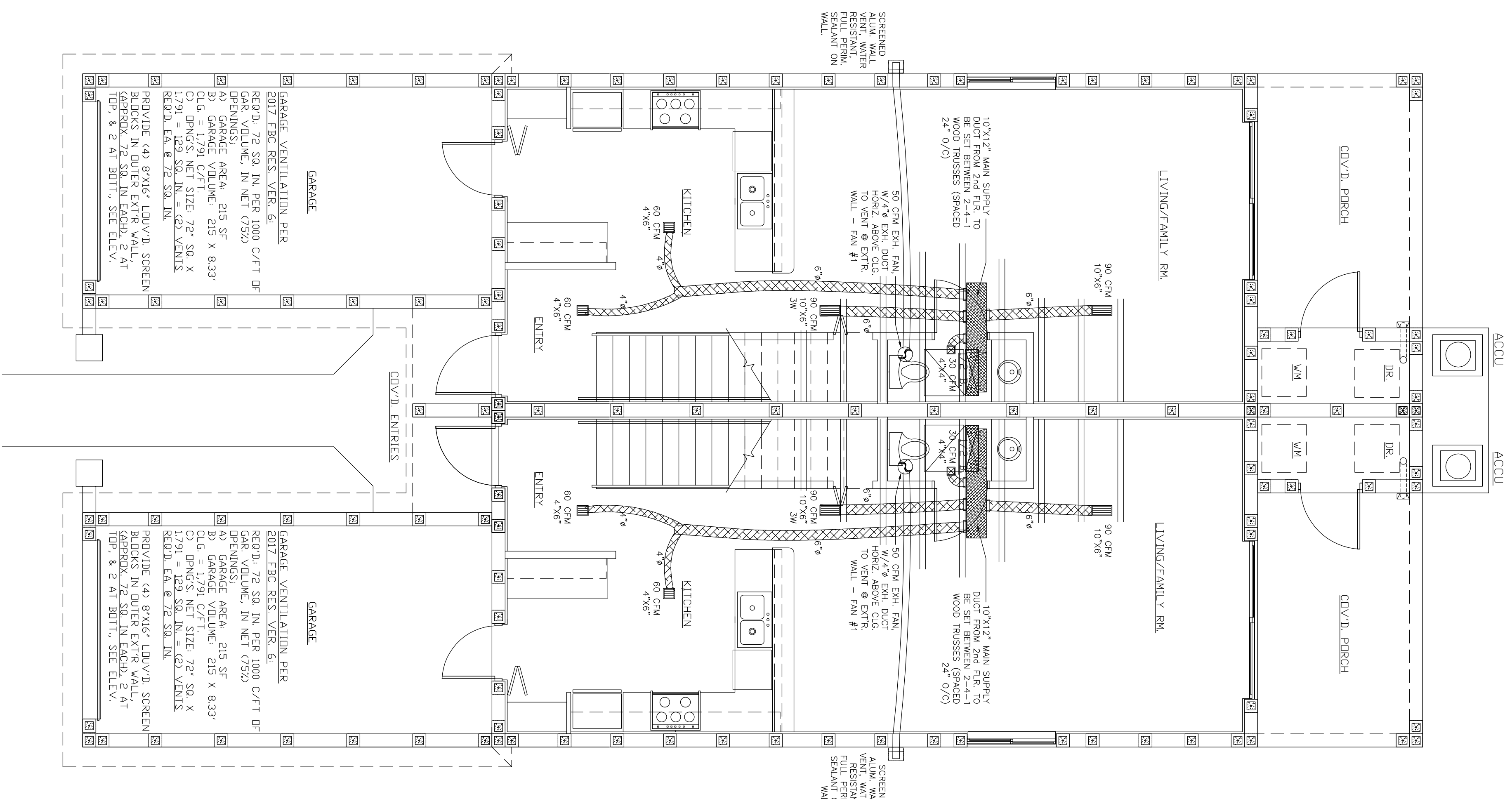
1) FIRST AND SECOND FLOOR:

A) AIR CONDITIONING SYSTEM SELECTED IS A CARBERRA MODEL #2448C-6224A00300 COOLING CONDENSER, WITH COIL #FY4DF02SL & A CORRESPONDING INT. HEATING/COOLING AIR HANDLER UNIT CARBERRA MODEL #491E 100 WITH 120V. SUPPLY AIR FLOW - 1310 CFM & 18.0 SEER, W/ EXTR. COMPRESSOR ON CONC. PADS AND INTERIOR AIR HANDLING UNIT IN 2ND FLOOR STORAGE CLOSET.

2. GENERAL SPECIFICATIONS FOR ALL SYSTEMS:

- A) ALL DUCTS SHALL BE R-6 INSULATED AND SHALL HAVE AIR-TIGHT METAL COLLARS AT CONNECTIONS TO MAIN DISTRIBUTION HOUSING AND TO HEADS AT EACH DIFFUSER. DUCTS ARE R-6 DUE TO THEM BEING IN NON-CONDITIONED CEILING SPACE, BOTH FLOORS.
- B) ALL METAL COLLARS FROM AIR DISTRIBUTION BOX DUCTS TO INSULATED ROUND DUCTS SHALL HAVE DEVICES THAT REGULATE CFM FLOW STATED ON PLAN FOR EACH DIFFUSER. (BASED ON QUALIFIED TECHNICIANS' GUIDING CFM MEASURING DEVICE).
- C) ALL METAL COLLARS SHALL BE INSTALLED AND TESTED TO BE AIR-TIGHT. COLLARS SHALL BE INSTALLED AT THE SIDE OF THE UNIT, AND SUPPLIED WITH A FLOAT SWITCH TO STOP SYSTEM IN CASE OF WATER LEAK. EACH AIR HANDLER TO ALSO BE SHIPPED WITH FLOW SWITCHES. LINE WHICH RUNS IN WALLS TO VERTICAL POINT UNDER FRESH FLOOR SLAB, AND BEYOND TO SIDE EXTERIOR AS INDICATED ON DRAWING HEREIN.
- D) AIR HANDLER SHALL SIT ON A METAL STAND AS A PASED SECONDARY DRAIN PAN. UNIT SHALL HAVE A 3/4" CONDENSATE DRAIN, WITH REFRIGERANT SUPPLY AND RETURN LINES FROM EXTERIOR COMPRESSOR TO INTERIOR AIR HANDLER UNIT, SHALL BE 3/8" WITH 3/4" Ø ASSEMPLY, EQUAL ON SOLUTION END. ALL REFRIGERANT SUPPLY LINES SHALL BE INSULATED AND WATER-TIGHT FROM BOTH POINTS OF TERMINATION.
- E) RETURN AIR FROM INDIVIDUAL ROOMS SHALL BE THRU INSULATION-LINED JUMPER CEILING GRILLED DUCTS AS SHOWN ON THE PLANS. AIR-TIGHT SEALED CIG. PLenums LEADING BACK TO A/C SUPPLY ROOM. OWNER SEEKS TO AVOID RETURN AIR GRILLES IN DOORS, DRAWINGS, ALL AT ALL TIMES. RETURN AIR SHALL BE POWERED BY 120V. CIRCUITS, AND WALL-SWITCHED, AS INDICATED ON ELECTRICAL DRAWINGS.
- F) ALL AIR HANDLING EQUIPMENT SHALL BE SUPPLIED BY CARBERRA. ALL ELECTRICAL EQUIPMENT SHALL BE SUPPLIED BY CARBERRA. SUPPLIER MAY BE "LUXURY METALS, INC." OR APPROVED EQUIPMENT.
- G) THESE AIR CONDITIONING PLANS SHALL BE WORKED SIMULTANEOUSLY WHILE CONSULTING MANUFACTURER'S PRINTED INSTRUCTIONS AND SPECIFICATIONS, BEING SUBMITTED BY A/C SUB-CONTRACTOR AND GENERAL CONTRACTOR WITH THESE PLANS.
- H) ALL WORK SHALL FOLLOW THE 2017 FLORIDA BUILDING CODE MECHANICAL AND ENERGY CODE.
- I) THE SPECIFICATIONS INCLUDES A 21" PAGE ENERGY CALCULATIONS WHICH INCLUDES ON-SITE DISPLAY CARD, AS ATTACHED HEREIN. BY ERIC BARRERA ARCHITECTURE, INC. ALL WORK SHALL BE DONE IN ACCORDANCE WITH THE 2017 FLORIDA BUILDING CODE, COMPLYING TO SECTION R905.3 OF FLORIDA ENERGY CODE, WHOSE CALCULATION ARE ATTACHED TO THESE PLANS.

LISTING OF BATHROOM TOILET EXHAUST FANS	
FAN UNIT TYPE #1:	ELI -1st FLR. @ HALL BATH & @ BOTH FULL BATHS, 2ND FLR.
MANUFACTURER:	AIR KING, OR EQUAL
PART NUMBER:	AK50S
SONES @ 1 SP:	0.5
PRODUCT DIMENSIONS:	AP120-S, 68 W
COLOR:	WHITE
VOLTAGE:	120 VOLTS
WATTAGE:	14.5W EACH
ITEM PACKAGE QUANTITY:	3
AIR FLOW CAPACITY:	50 CFM (MAX. 52 SQ. FT AREAS)
CERTIFICATION:	ENERGY STAR
MOUNTING:	INDOOR CEILING OR WALL
DUCT SIZE:	4" TO EXTR.



A/C SPECIFICATIONS & DETAILS

FIRST FLOOR PLAN - UNITS 'A' & 'B'

SECOND FLOOR PLAN - UNITS 'A' & 'B'

BUILDING TYPE 'A'
 BUILDING #1 & #2

© 2018 LOUIS BARRERA ARCHITECT - FOR USE ON STATED SITE ONLY - NOT TO BE COPIED WITHOUT ARCHITECT'S PERMISSION

CRISPUS COMMONS PARCEL 'A' PH. 2 - 12 RESIDENTIAL TOWNHOUSES
 EVANS STREET AND NORTH 22nd AVENUE, HOLLYWOOD, FLORIDA
 L E BARRERA ARCHITECTURE, INC. - LOUIS E. BARRERA ARCHITECT
 2707 NW 116TH TERRACE CORAL SPRINGS, FLA. E-MAIL: barrera1264@bellsouth.net

ISSUE DATES
 PER CITY ATTC. 10-8-2018
 FOR BLDG. REVIEW - 10-15-2018
 100% COMPLETE - 10-15-2018
 BLDG. SRS - OCT 15, 2018
 OWNER REVIEW ISSUE - 10-15-2018
 OWNER REVIEW COMPLETE - OCT 5, 2018
 OWNER REVIEW ISSUE - 10-15-2018
 FOR APER. 70% COMPL. - 10-15-2018
 A/C-03-2018
 A/C-03-2018
 A/C-03-2018

FLA. REGISTR. #A8008738
 TELEPHONE 954.261.9857
 DRAWN BY:
 AC-1 BLDGS. 1 & 2