

PRODUCT AND PRODUCT APPROVALS REQUIRED:

1. ALL FACTORY-FABRICATED AND PREFINISHED CLADDING AND COMPONENTS (ENTRY DOOR AND FRAME, WINDOWS, FRENCH OUTSLING GLASS DOORS, (AS SHOWN), G.C. IS OBTAINING OR HAS OBTAINED CERTIFICATION DOCUMENTS (NOA(S)) FROM SUPPLIER TO MEET SPECIFIED REQUIREMENTS. ALL FABRICATED AND PREFINISHED HARDWARE SHIPPERS ARE REQUIRED TO BE IMPACT-RESISTANT. FENESTRATION IS NOT CONSIDERED.
2. FOR ALL SPECIFICATIONS AND NOTES RELATED TO WOOD TRUSSES AND OTHER TRUSSES, SEE DRAWING 9-3.
3. ALL TRUSSES TO TRUSS CONNECTORS AND UP/DOWN LOADINGS ARE BEING SPECIFIED BY TRUSS SUPPLIER IN REQUIRED SHOP DRAWINGS.

ROOF UP/LIFT FORCES & NAILING (19/32" PLYWOOD)
(WITH REDUCTION FACTOR OF .77 SHOWN)

ZONE ① = -37.8 PSF - 8d NAILS @ 6" O/C
ZONE ② = -63.4 PSF - 8d NAILS @ 4" O/C
ZONE ③ = -98.3 PSF - 10d NAILS @ 4" O/C

ABOVE FIGURES CORRESPOND TO GRAPHED LISTINGS SHOWN ON FIG. 6TH ED. FORM, INTERPR. #3, TENSIN. TOLUVA, WIND LOAD CRANK

MURST CASE LOADS AT THE B.M.

FOR ANCHOR TYPES 'A', 'B' & 'C':
2'-0" X 8'-0" = 16.50 FT X .634 = -10.44 = ZONE '2'
2'-0" X 5'-3" = 10.50 FT X .378 = -3.969 = ZONE '3'

FOR ANCHOR 'C': 88' SF = 16.50 FT X .72 SF X .38 (27.26 SF) X .634 = -3.72428
TOTAL REQ'D FOR ANCHOR 'C' (4 CORNERS) = -15.29712
MAX. UPLIFT = 10.44 + 3.969 = 14.413 PSF (A) & 17.18 PSF (B)

DOCKLUMBER (PER 50 FT.):
ROOF = 13'-3 1/2" X 16 PSF = 212 PSF
WALLS = 9'-4 1/2" X 78 PSF = 729 PSF (X)
TOTAL LIVE & DEAD = 9408 ON FLOOR

EQUALIZATION WITH GIVEN 2'-0" LINEAR, A TOTAL OF 1800M BASED ON STRUCT. CALC. AT EACH END OF TRUSS. ANCHOR UPLIFT LOADS TO BE CHECKED & MID-PARTY WALLS FOR EACH 1'-0" LINEAR, A TOTAL OF 3650M BASED ON STRUCT. CALC. AT EACH END. (EACH WALL/FLOOR LOAD = 3650M / 20 SF ENCL.)
SOIL BEARING CAP. 1500M = 1800M PSF

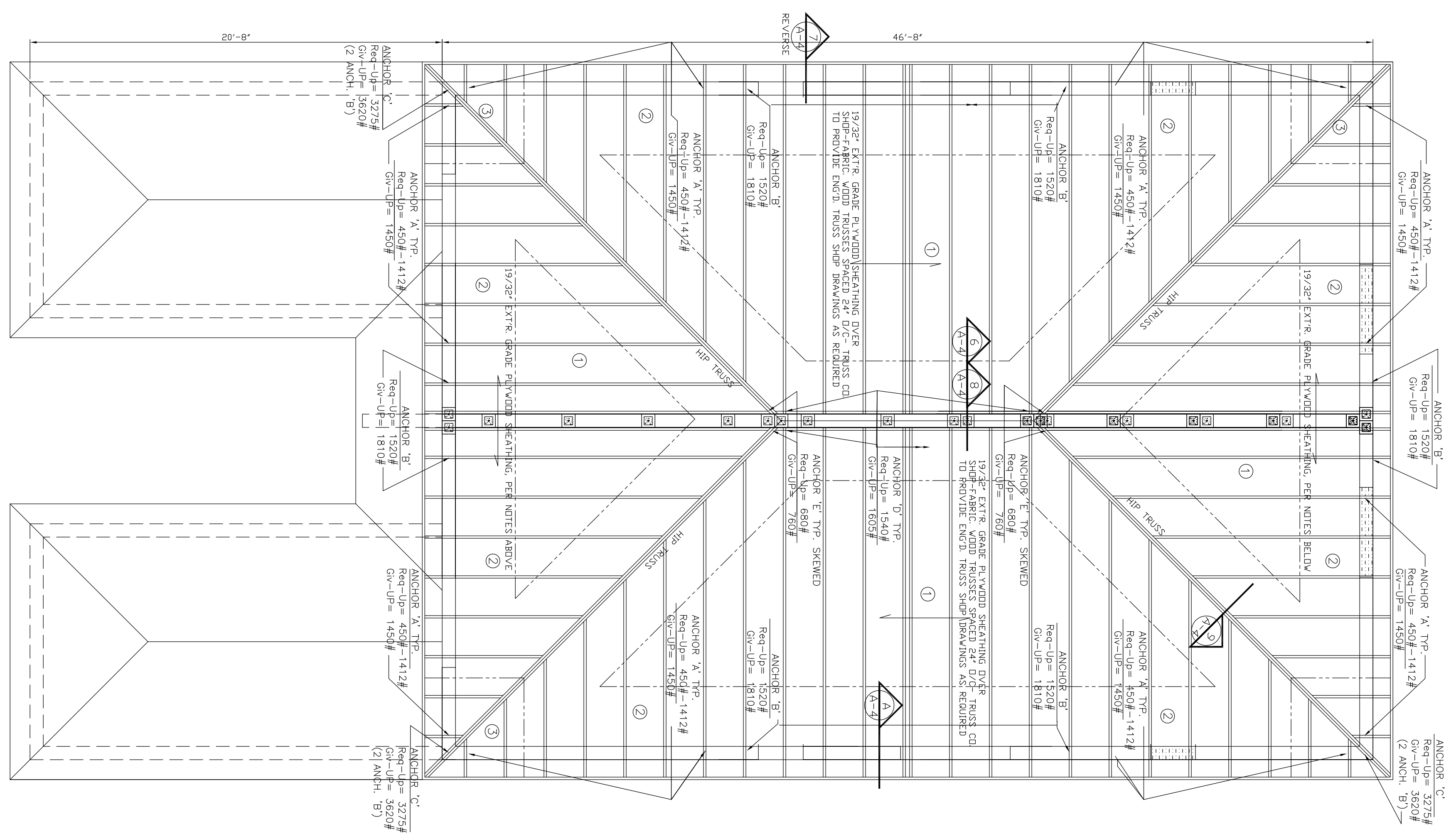
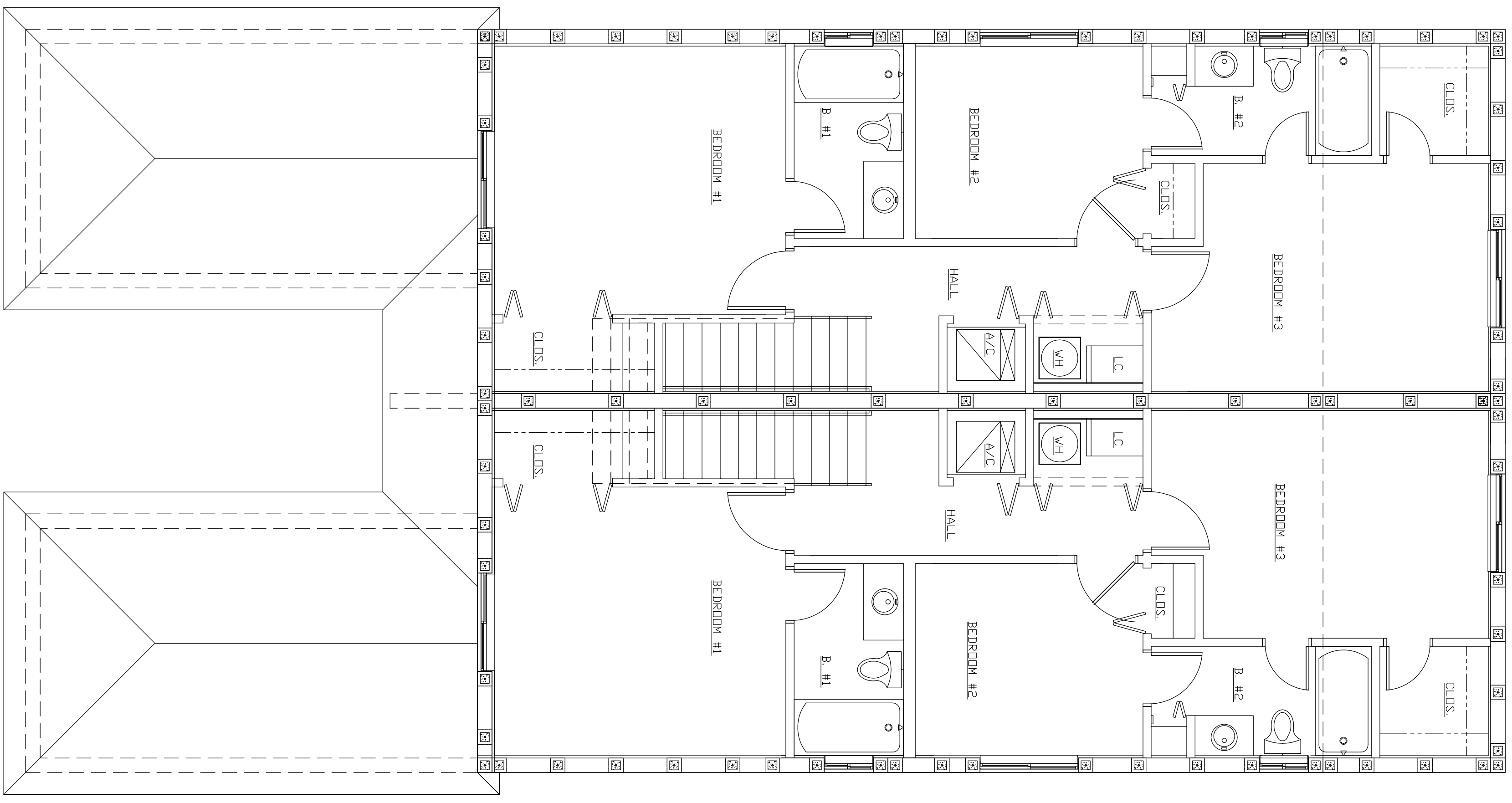
WALL CASE ACCEPTABLE

IT IS NOTED THAT SOIL BORNINGS STATE 2,500 PSF SOIL BEARING CAPACITY IS ACHIEVED WITH 1800M PSF. THIS IS BASED ON A PROPOSED ANCHOR RATIO REGARDING ACHIEVING 2,500 PSF AT THE PRECEDING WITH 1800M PSF

ROOF TRUSS ANCHOR SCHEDULE

MARK	TYPE	CONNECTOR FABRICATOR	# OF WALLS	THE B.M. LAT. CAP. (TD TRUSS)	EMBED. PERFN.	PARALLEL RECD. (1320)	UP/LIFT RECD. (1320)	UP/LIFT CAPACITY	REMARKS
4	TRUSS TO CONC. BM.	SIMPSON HETA16	1	7	40"	340 lbs.	729 lbs.	1450 TO 1412 TO	1450 CAPACITY lbs.
5	TRUSS TO CONC. BM.	SIMPSON HETA16	1	9	45"	340 lbs.	729 lbs.	1412 TO 1170 lbs.	1810 CAPACITY lbs.
6	GERBER FR TO CONC. WALL	SIMPSON HETA16	2	11 EA.	45"	420 lbs.	1190 lbs.	3270 lbs.	3650 CAPACITY lbs.
7	TRUSS TO CONC. WALL	SIMPSON HETA16	1	1	11EA	45"	420 lbs.	680 lbs.	760 CAPACITY lbs.
8	HANGER/TRUSS TO CONC. WALL	SIMPSON HETA16	1	1	4-10W1-1/2"	45"	1170 lbs.	1540 lbs.	1605 CAPACITY lbs.

HANGER/TRUSS TO SIMPSON HETA16 WITH CONNECTIONS EACH SIDE OF TRUSS
SCHEDULE SPECIFIED FOR ALL HANGERS TO TRUSS CONNECTIONS EACH SIDE OF TRUSS



REFERENCED FLOOR PLAN BELOW
SCALE: 1/4" = 1'-0"

UPPER ROOF FRAMING PLAN
SCALE: 1/4" = 1'-0"