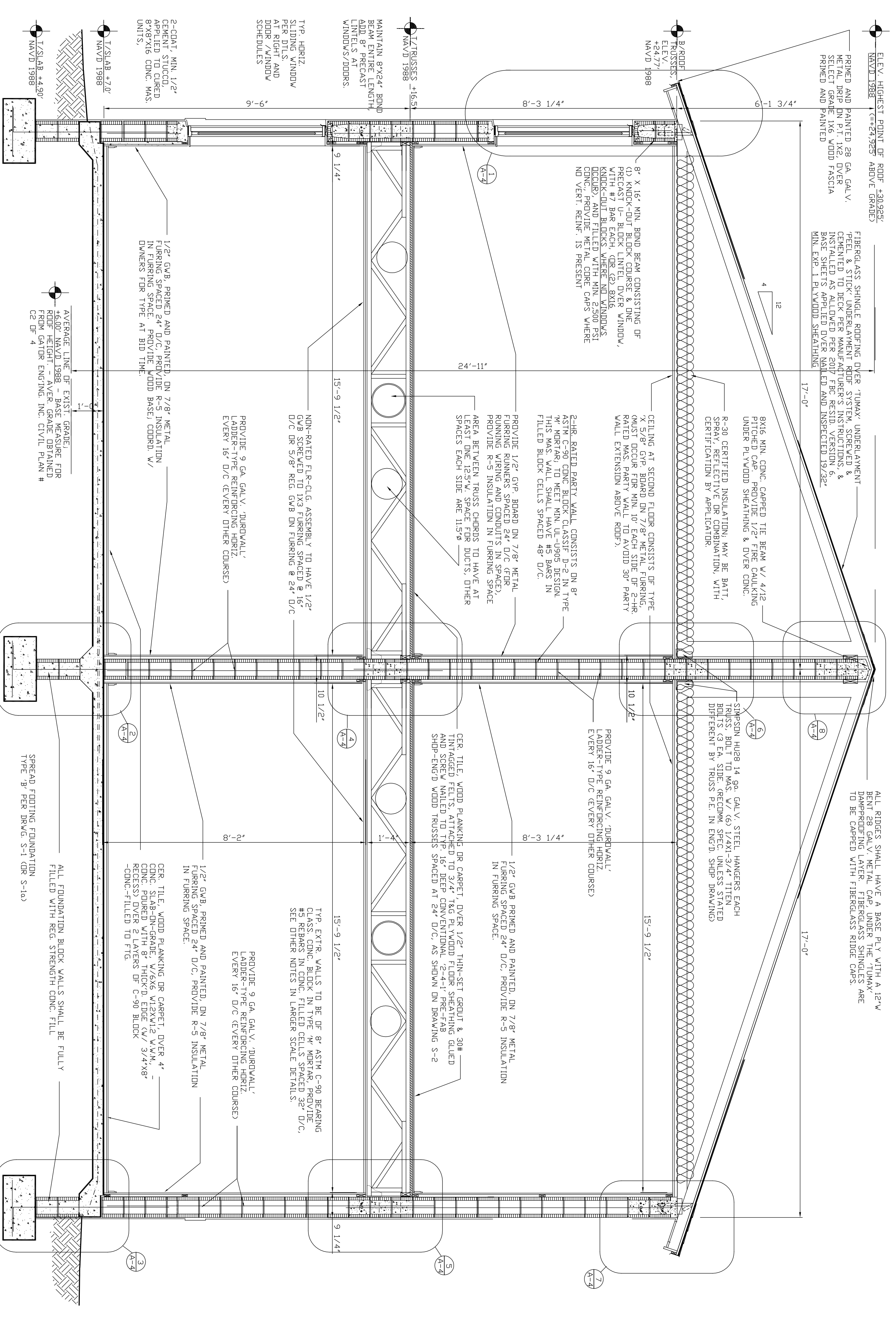
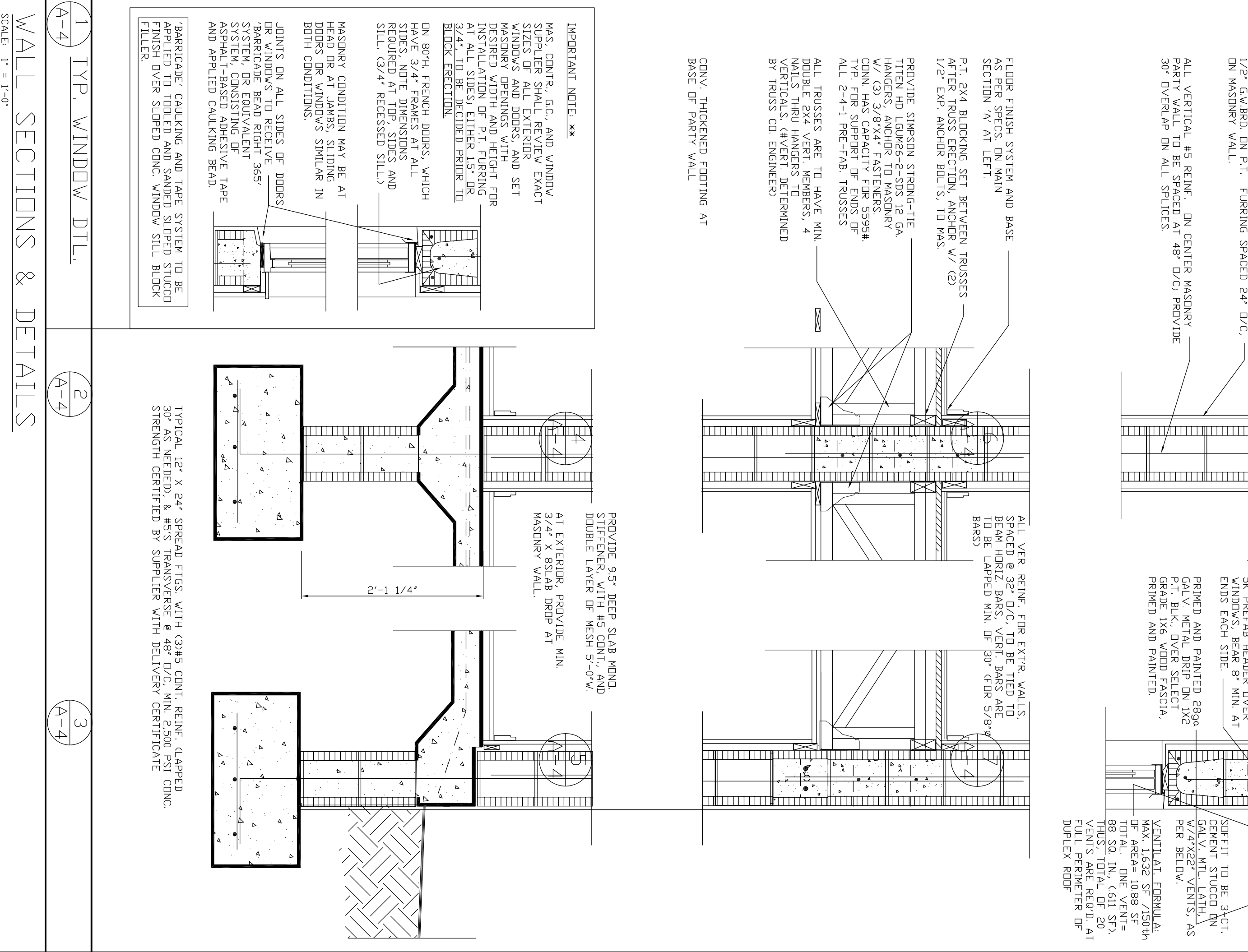
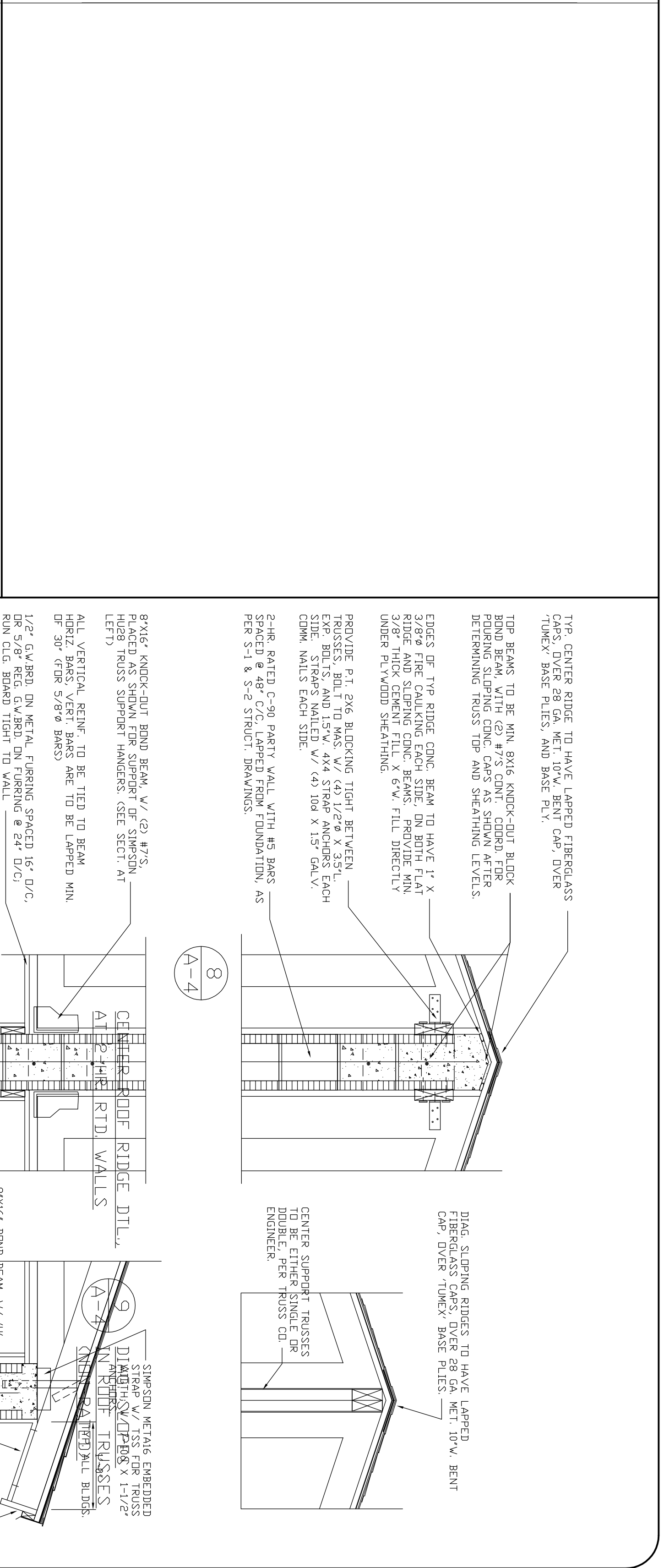


CROSS-SECTIONS THRU TYP. GARAGE
SCALE: 1/2" = 1'-0"



CROSS-SECTION - TYP. TOWNHOUSE BLDG. #3 THRU #6
SCALE: 1/2" = 1'-0"



WALL SECTIONS & DETAILS
SCALE: 1" = 1'-0"

ISSUE DATES
FIRST OWNER ISSUE - FOR REVIEW AND APPROVAL - OCT. 5-2018
OWNER REVIEW ISSUE - FOR REVIEW AND APPROVAL - OCT. 5-2018
ISSUE - 100% COMPLETE - OCT. 5-2018
OWNER REVIEW ISSUE - FOR REVIEW AND APPROVAL - OCT. 5-2018
ISSUE - 100% COMPLETE - OCT. 5-2018

CRISPUS COMMONS PARCEL 'A' PH. 2 - 12 RESIDENTIAL TOWNHOUSES
EVANS STREET AND NORTH 22nd AVENUE, HOLLYWOOD, FLORIDA
L E BARRERA ARCHITECTURE, INC. - LOUIS E. BARRERA ARCHITECT
2707 NW 116TH TERRACE CORAL SPRINGS, FLA. E-MAIL: barrera1264@bellsouth.net

PLA REGISTER:
#A00087336
TELEPHONE:
954-436-9657
DRAWN BY:
A-4
BLDG.
3, 4, 5, 6