

1. ALL EQUIPMENT AND DUCT SYSTEMS ARE BEING INSTALLED BY A CERTIFIED 'CORRER A. C. CORR.' AUTHORIZED INSTALLER. EQUIPMENT SELECTION AS DESIGNED HAS BEEN FINALIZED FOR PURPOSES OF BIDDING AS OF 9-\*\*\*-2018, WITH A/C SUB SUBMITTING CORRESPONDING DATA AND ENERGY FACTOR LISTING.

1) FIRST AND SECOND FLOOR:

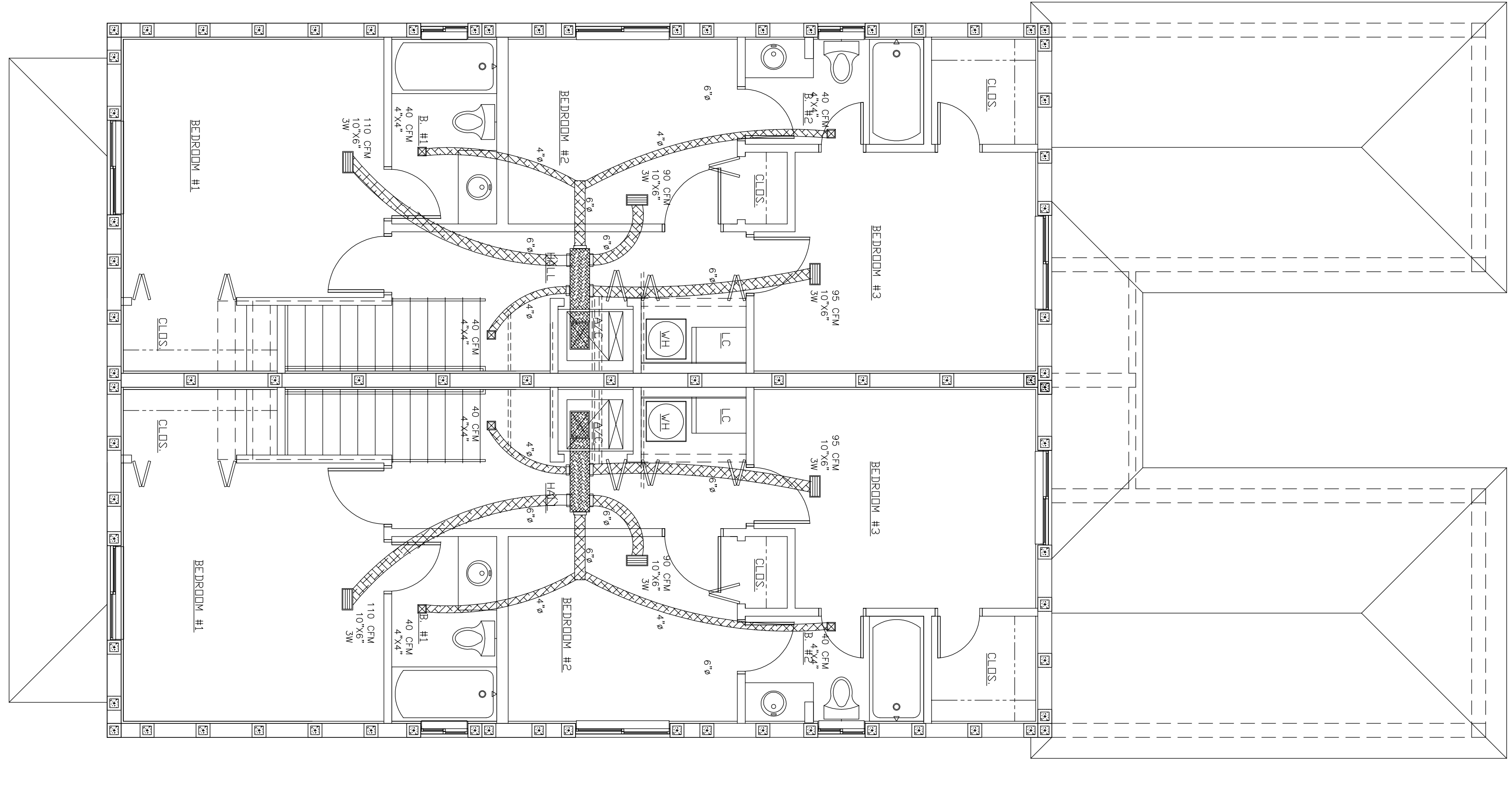
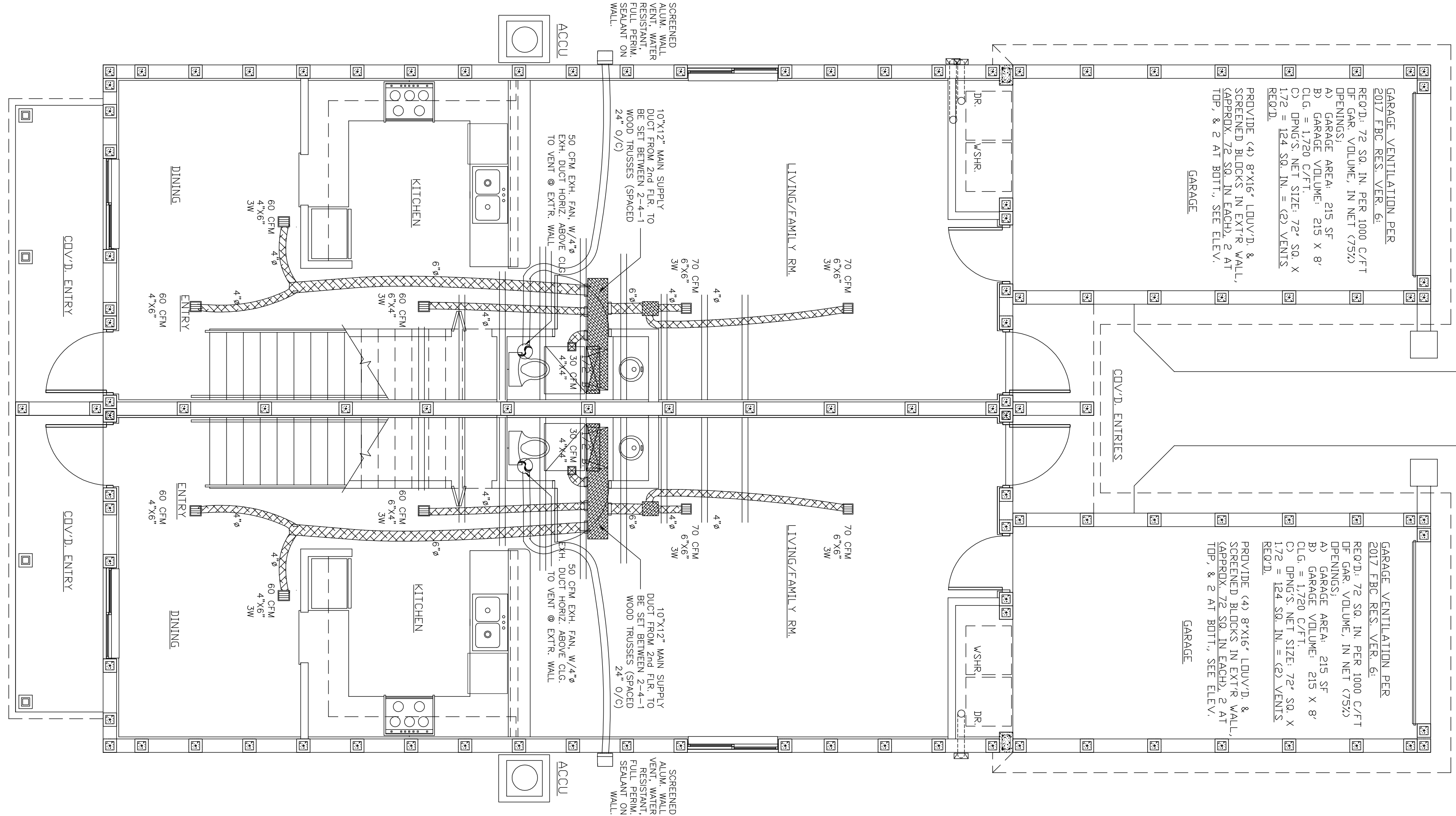
A) AIR CONDITIONING SYSTEM SELECTED IS A 'CORRER' MODEL #24AR6 624A00200 COOLING CONDENSER, WITH COIL #PK40R02SL & A CORRESPONDING INT'R HEATING/COOLING AIR HANDLER UNIT 'CORRER' MODEL #AUE 100  
 B) THIS WILL BE A 2.0 TON (COOL TO 55.0 CEN AIR FLOW) - 13.0 EER & 16.0 SEER, W/ EXTR. COMPRESSOR ON CONC. FLOOS AND INTERIOR AIR HANDLING UNIT IN 2ND FLOOR STORAGE CLOSET.

2. GENERAL SPECIFICATIONS FOR ALL SYSTEMS:

- A) ALL DUCTS SHALL BE R-6 INSULATED AND SHALL HAVE AIR-TIGHT METAL COLLARS AT CONNECTIONS TO MAIN DISTRIBUTION HOUSING AND TO HEADS AT EACH DIFFUSER. DUCTS ARE R-6 DUE TO THEM BEING IN NON-CONDITIONED CEILING SPACE. BOTH FLOORS.
- B) ALL METAL COLLARS FROM AIR DISTRIBUTION BOX DUCTS TO INSULATED ROUND DUCTS SHALL HAVE DEVICES THAT REGULATE CFM FLOW STATED ON PLAN FOR EACH DIFFUSER. (BASED ON QUALIFIED TECHNICIAN'S GAUGING CFM MEASURING DEVICE)
- C) ALL INT'R AIR HANDLING UNIT SHALL BE PLACED ON METAL PAN ON WOOD PLATFORM APPROPRIATE FOR THE SIZE OF THE UNIT AND SUPPLEMENTED WITH 2" MIN. INSULATION. THE UNIT SHALL BE INSTALLED WITH A 3/4" AIR HANDLER UNIT. THE UNIT SHALL BE INSTALLED WITH A 3/4" AIR HANDLER UNIT. THE UNIT SHALL BE INSTALLED WITH A 3/4" AIR HANDLER UNIT.
- D) AIR HANDLER SHALL SIT ON A METAL STAND UNDER FIRST FLOOR SLAB, AND BENT TO SIDE EXTERIOR, AS INDICATED ON DRAWING HEREIN.
- E) REFRIGERANT SUPPLY AND RETURN LINES FROM EXTERIOR COMPRESSOR TO INTERIOR AIR HANDLER UNIT, SHALL BE 3/8" WITH 3/4" Ø REFRIGERANT OR EQUAL ON SECTION END. ALL REFRIGERANT SUPPLY LINES SHALL BE INSULATED AND WATER-TIGHT FROM BOTH POINTS OF TERMINATION.
- F) RETURN AIR FROM INDIVIDUAL ROOMS SHALL BE THRU INSULATION-LINED JUMPER GRILLED DUCTS AS SHOWN ON THE PLANS.
- G) ALL BATHROOM EXHAUST FANS SHALL BE POWERED BY 120V. CIRCUITS, AND WALL-SWITCHED, AS INDICATED ON ELECTRICAL DRAWINGS. ALL FANS SHALL BE CONNECTED TO MIN. 4/8 GALV. METAL DUCTS WHICH RUN HORIZONTALLY TO GOOSENECK GALVANIZED METAL OR ALUM.
- H) THESE AIR CONDITIONING PLANS SHALL BE WORKED SIMULTANEOUSLY WHILE CONSULTING MANUFACTURER'S PRINTED INSTRUCTIONS AND SPECIFICATIONS, BEING SUBMITTED BY A/C SUB-CONTRACTOR AND GENERAL CONTRACTOR WITH THESE PLANS.
- I) ALL WORK SHALL FOLLOW THE 2017 FLORIDA BUILDING CODE MECHANICAL AND ENERGY CODE.
- J) THE SPECIFICATIONS INCLUDES A 21-PAGE ENERGY CALCULATIONS, WHICH INCLUDES ON-SITE DISPLAY CARD, AS ATTACHED HEREIN, BY REG. STRAUB, PRESIDENT, E-CALCS PLUS, INC., AND USING A WHIRLWIND CERTIFIED ENERGY RATER WITH FORM R405, COMPLYING TO SECTION 5903.9 OF FLORIDA ENERGY CODE, WHOSE CALCULATION ARE ATTACHED TO THESE PLANS.

LISTING OF BATHROOM TOILET EXHAUST FANS

FAN UNIT TYPE #1:	#1 - 1st FLR. @ HALF BATH & @ BOTH FULL BATHS, 2nd FLR.
MANUFACTURER:	AIR KING, or equal
PART NUMBER:	AKS05
SONES @ .1 SPZ:	0.5
PRODUCT DIMENSIONS:	AP120-S-G6 W
COLOR:	WHITE
VOLTAGE:	120 VOLTS
WATTAGE:	14.5W EACH
ITEM PACKAGE QUANTITY:	3
AIR FLOW CAPACITY:	50 CFM (MAX. 52 SQ. FT. AREAS)
CERTIFICATION:	ENERGY STAR
MOUNTING:	INDOOR CEILING OR WALL
DUCT SIZE:	4"ø TO EXTR.



A/C FLOOR PLAN & A/C DETAILS  
SCALE: 1/4" = 1'-0"

OVERALL A/C 2nd FLOOR PLAN  
SCALE: 1/4" = 1'-0"

BUILDING TYPE 'B'  
BUILDINGS #3, #4, #5, & #6

PER CITY ATC: 10-9-2018  
 PER CITY ATC: 10-9-2018  
 100% COMPLETE-SEPA 89  
 BLDGS S&S - OCT. 15, 2018  
 OWNER REVIEW ISSUE-  
 ISSUE #1006 COMPLETE  
 OCT 5-2018  
 OWNER REVIEW ISSUE-  
 FOR APPR. 75% COMPL.  
 A/C 21-2018  
 PERFORMER: BARRERA - FOR  
 ATC-03-2018

ISSUE DATES

CRISPUS COMMONS PARCEL 'A' PH. 2 - 12 RESIDENTIAL TOWNHOUSES  
 EVANS STREET AND NORTH 22nd AVENUE, HOLLYWOOD, FLORIDA  
 L E BARRERA ARCHITECTURE, INC. - LOUIS E. BARRERA ARCHITECT  
 2707 NW 116TH TERRACE CORAL SPRINGS, FLA. E-MAIL: barrera1264@bellsouth.net

PLA. REGISTR. #A0007836  
 TELEPHONE 954.261.9657

DRAWN BY:

AC-1  
 BLDGS. #3,4,5,&#6