



You may remember that a few months ago, I shared the sad news with you that one of the children at Sampford Arundel, who started her journey at Stawley Preschool and then Swallows had been diagnosed with an inoperable brain tumour. Very sadly, she lost her fight last week.

Myself and Vicky both worked with Harper and I have seen her go through school with my own sons.

We will both be attending her funeral on Tuesday 12th March, therefore preschool, along with school, will be closed on this day. I am sorry for any inconvenience this causes.

SCHOOL READINESS WORKSHOPS

If your child is starting school this year and you have questions or concerns about whether they are ready and what you can do to help, our school readiness workshops are for you. We will run two dates initially, one virtually and one in person. If you are unable to make either of these, we have an information pack we can send you and we are always available to chat at the beginning or end of the day.

Virtual: Wednesday 20th March 7.30pm

In person: Thursday 21st March 2.30pm

Please email manager@stawleyunder5s.co.uk if you would like the link for the virtual session.



We raised over £650
at pig racing!

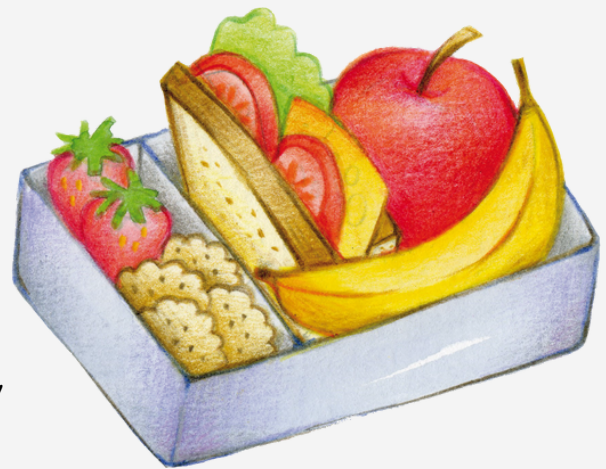
Thank you to everyone who came to support. It was such a fun evening! As ever, a HUGE thank you to the fundraising committee for their dedication.



From this week at Stawley, we must ask that you do not include any nuts, nut butter or chocolate and hazelnut spread in your child's lunchbox as we now have a child with a nut allergy. Thank you for your understanding.

On the subject of lunches, just a couple of reminders.

- Lunchtime is a great learning opportunity for things like social skills and independence. We use this time to support children to learn how to open packets etc, so please don't feel that you need to open them in advance.
- We know that children can be fussy, but please try to include a balanced lunch, with sweet, sugary options limited and kept to a single treat at the end of the meal.



WORLD

BOOK

DAY

This Thursday 7th March is World Book Day. Children are invited to dress up as their favourite character, but please don't worry if you don't have anything, we will be face painting during the day! We would also like to invite you to join us for story time at 2.45pm.

A STRANGE REQUEST!

We would love to replace our two dilapidated sheds with a shipping container. We have looked into various options and we just can't stretch to a new one, so we are on the look out for a second hand container. If you know of any, or are able to transport one for us when we find one, please let us know, Thank you.



AND ANOTHER ONE!

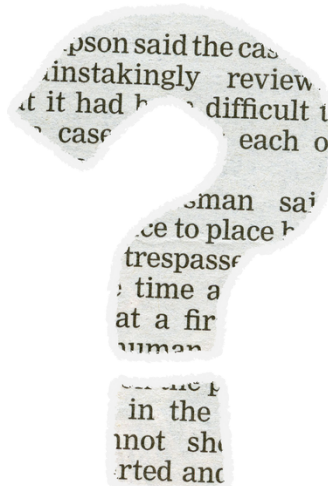
We have kindly been gifted some large shelving units by a parent, which will be perfect when we get a storage container. In the meantime, I am able to store them, but we have no way of getting them from Holcombe Rogus to Tonedale in Wellington! If anyone is able to transport them for us, we would be very grateful!



USEFUL LINKS

- [Preschool website](#)
- [A parent's guide to development in the early years](#)
- [A guide to synthetic phonics, the 'sounding out' that we use when writing](#)
- [NSPCC pants rule- a child friendly way to explain that 'privates are private'](#)
- [SASP \(Somerset Active Schools Partnership\) parent zone](#)
- [Our Facebook page](#)
- [Our Instagram](#)
- [Funding in Somerset](#)
- [Funding in Devon](#)

BOOK OF THE
MOMENT!



In honour of World Book Day, we're leaving the book of the moment up to you this week! What was your childhood favourite? Can you share it with your child? If you don't have a copy, see if you can find it being read online. We'd love to hear about them!

DIARY DATES (NEW DATES IN RED)

Thursday 7th March 24	World Book Day
Tuesday 12th March 24	Preschool Closed for funeral
Tuesday 26th March 24	Last day at Swallows before Easter holiday
Thursday 28th March 24	Last day at Stawley before Easter holiday
Monday 15th April 24	First day back at Swallows after Easter holiday
Wednesday 17th April 24	First day back at Stawley after Easter holiday
Thursday 2nd May 24	CLOSED FOR POLLING
Friday 3rd May 24	INSET DAY (Stawley)
Monday 6th May 24	BANK HOLIDAY
Friday 17th May 24	Trip to Quince Honey Farm
Tuesday 21st May 24	Last day at Swallows before half term
Friday 24th May 24	Last day at Stawley before half term
Monday 3rd June 24	First day back at Swallows after half term
Wednesday 5th June 24	First day back at Stawley after half term
Friday 19th July 24	Last day at Stawley before summer holiday
Tuesday 23rd July 24	Last day at Swallows before summer holiday
Tuesday 3rd September 24	INSET day (Swallows)
Wednesday 4th September 24	INSET day (Stawley)
Thursday 5th September 24	First day back at Stawley after summer holiday
Monday 9th September 24	First day back at Swallows after summer holiday
Tuesday 22nd October 24	Last day at Swallows before half term
Friday 25th October 24	Last day at Stawley before half term
Monday 4th November 24	First day back at Swallows after half term
Wednesday 6th November 24	First day back at Stawley after half term
Tuesday 17th December 24	Last day at Swallows before Christmas
Friday 20th December 24	Last day at Stawley before Christmas