

COMFORT PRODUCTS  
for



PATIENTS

# COMFORT CORNER CATALOGUE

<b>Helpful information</b>	<b>1</b>
<i>A Pillow for Every Patient</i>	2
<i>Wheelchair/Bedrail Caddy</i>	3
<i>Wheelchair Armrest Cushions</i>	4
<i>Walker Caddy</i>	5
<i>Clothing Covers</i>	6
<i>Gentlemen's Clothing Cover*</i>	7
<i>Foley Bag Cover</i>	8
<i>Ostomy Bag Cover</i>	9
<i>Tissue Pack Covers</i>	10
<i>Knit Caps</i>	11
<i>Fidget Mats*</i>	12
<i>Gentlemen's Fidget Mats*</i>	13
<i>Infinity Fidget</i>	14
<i>Squidgets &amp; JellySquishes</i>	15
<i>Fidget Frogs</i>	16
<i>Lap-Size Quilts*</i>	17
<i>Lap-Size Knitted &amp; Crocheted Blanket</i>	18
<i>Lap-sized Fleece Blankets</i>	19
<i>Legacy Books</i>	20

*\*Please be mindful of guidelines for use or availability.*

## Welcome to the Comfort Corner! ...brought to you by *Complementary Services*

Our Comfort Products are part of the Tidewell/Empath brand, so we depend on volunteers and Care Team members to get them to our patients. Thanks for being an essential link in this chain!

We have so many well-constructed items, lovingly handcrafted by volunteers and Community Partners. They're designed to provide a measure of comfort to our hospice patients, and everything is washable! Please take some time to familiarize yourself with all the items we stock.

If you'd like a particular color or pattern for your patient, use the contact info below to request; we'll do our utmost to fulfill it. Most of the items are also made in red/white/blue, perfect for our Veteran patients. Our sewing, knitting, crocheting, and crafting volunteers are so creative and often have a great sense of humor, so find out if your patient had a hobby or an interest. Often, we can provide a comfort product that's on-theme.

***Due to Infection Control practices, none of the items are ever re-used.*** Every patient receives a new product just for them. Once it enters a home or facility and it is *refused*, it must be placed in the trash, so please keep this in mind when you take items.

***Please be aware of the restriction on Fidget Mats for patients residing in facilities—only volunteers, nurses, or CNAs who are assigned to regularly scheduled visits may take these.*** This is a safety precaution—fidget mats are not designed for patients to use unattended. Mats will be brought to each visit and the patient's interactions with it will be fully supervised.

Out of respect to our volunteers and Community Partners, please use these items ***for Tidewell patients only***. The volunteers and Community Partners donate their time, talent, and materials making these with the expectation that they will go to ***Tidewell hospice patients***; we are obligated to honor that commitment. ***If you'd like something for yourself, a family member, or a non-Tidewell patient, please let us know and we can provide a pattern or a link where they can be purchased.***

### **VOLUNTEERS**

*How do you know what your patient may need before your first visit? Easy!*

When you accept a patient assignment, ask your Volunteer Coordinator which DME (Durable Medical Equipment) the patient has. If it's been recorded, VCs know if the patient uses a walker, wheelchair, or hospital bed. *But a pillow is always a great start!*

If you have any suggestions for new items, or a special request, please contact:

[LauraDrake@EmpathHealth.org](mailto:LauraDrake@EmpathHealth.org) mobile: 941-292-9746

# ***PILLOW FOR EVERY PATIENT***



## **OUR FLAGSHIP COMFORT PRODUCT!**

**Our hope is that every patient receives at least a pillow from Complementary Services.** Available in many colors and patterns. These pillows are very special because they are literally made by an intergenerational and geographically-diverse village—sewn by volunteers, stuffed by volunteers, Ringling College students, employees of local businesses and churches during Give-Back days, filled with stuffing funded by grants from far-reaching sources and from the fiberfill manufacturer, *Fairfield Industries* in Ohio, and finally sewn closed and tagged by a Tidewell volunteer.

# WHEELCHAIR CADDY



Ties onto the arm rest of the outer side of a wheelchair; has 2 pockets; can also be tied onto **bedrails** and bathroom **towel bars** and **newer styles of walkers**.

Keeps personal items within arm's reach. Available in many colors and patterns; vary a bit in overall size because they are hand-crafted by many different sewing artists.

# WHEELCHAIR ARMREST CUSHIONS



Uses Velcro to attach; reversible; varies in color and pattern.

# WALKER CADDY



Hangs over the front, top bar of a walker; deeper pockets than the wheelchair caddy; Velcro closures to keep it in place; pockets on both sides. Can also hang over a **bathroom towel bar**. Available in many colors and patterns; vary a bit in overall size because they are hand-crafted by many different sewing artists.

# CLOTHING COVERS



Made from a variety of fabrics, these are extra-long to provide coverage for the lap. Has a Velcro closure at the back. They are not waterproof, but a family can easily adapt one by pulling out the stitching along the bottom and inserting an absorbent towel or a piece of vinyl fabric.



# GENTLEMEN'S CLOTHING COVERS\*

MODELED BY: Marketing's Tim Wolfram!



Performing just like our Adult Clothing Cover, this one is fashioned from an actual men's dress shirt. The button placket and pocket are sewn closed. Designed especially for our male patients, we hope to provide an experience of the past when they were self-sufficient and part of an active community.

By Request: [LauraDrake@EmpathHealth.org](mailto:LauraDrake@EmpathHealth.org)

## FOLEY BAG COVER



For patients who are catheterized, this cover provides some privacy and therefore, dignity. It has two Velcro closures that allow it to hang from the reinforced top edge of the Foley bag, so there's no pressure on the fabric. Washable!

## OSTOMY BAG COVERS



Our sewing gals have a great sense of humor! Like Foley bags covers, this cover also provides some privacy and therefore, dignity. Washable! FYI...this particular item went to a patient who was a long-haul trucker who loved restored 1950's hot-rods!

## COVERS FOR PERSONAL-SIZE TISSUE PACKS



A little bit of cheer—can be tucked into a wheelchair or walker caddy or kept bedside.

# KNIT CAPS



Lightweight, one-size-fits-all; perfect for patients in chilly facilities; perfect for home patients, as well! Comes in a variety of colors and patterns.

For patients with dementia or Parkinson's

## FIDGET MAT\*

\*Available to VOLUNTEERS and CARE TEAM MEMBERS who are assigned regularly scheduled visits with a patient.



Due to safety concerns, **fidget mats cannot be left with facility patients**. The mats are brought to each visit, used under the supervision of a volunteer, CNA, or nurse. They are **never reused with other patients**, in accordance with infection control practices. We can provide large zipper-style plastic bags to keep the fidgets clean between visits. Just ask!

Fidget mats include a variety of tactile experiences for the patient with Parkinson's or dementia. Fidgety fingers are kept safely occupied with a variety of experiences.

For patients with dementia or Parkinson's

## GENTLEMAN'S FIDGET MAT\*

\*Available to VOLUNTEERS and CARE TEAM MEMBERS who are assigned regularly scheduled visits with a patient.



Due to safety concerns, **fidget mats cannot be left with facility patients**. The mats are brought to each visit, used under the supervision of a volunteer, CNA, or nurse. They are **never reused with other patients**, in accordance with infection control practices. We can provide large zipper-style plastic bags to keep the fidgets clean between visits. Just ask!

Fidget mats include a variety of tactile experiences for the patient with Parkinson's or dementia. Fidgety fingers are kept safely occupied with a variety of experiences. With this mat designed especially for our male patients, we hope to provide an experience of the past when they were self-sufficient and part of an active community.

By Request: [LauraDrake@EmpathHealth.org](mailto:LauraDrake@EmpathHealth.org)

# INFINITY FIDGET



Original creation of Volunteer Carol Whittaker

An alternative to fidget mats (**which cannot be left with patients in facilities, due to overabundant caution.**) It's basically a more complicated Möbius strip which is constructed by affixing the ends of a rectangular strip together, after first having given one of the ends a one-half twist. This has multiple twists. By pulling from the center, it becomes a never-ending fascination, keeping fidgety fingers safely occupied. The colors are stimulating, and its softness is safe and cuddly.



For patients with dementia or Parkinson's

## SQUIDGETS & JELLYSQUISHES



Squidget is the original creation of Carol Whittaker, Volunteer

Jellysquish is the original creation of Community Partner Esperanza Paulino, New College of Florida

An alternative to fidget mats (**which cannot be left with patients in facilities, due to overabundant caution.**) The tentacles keep fidgety finger safely occupied. The colors are stimulating, and its softness is cuddly and soothing. Available in many colors and patterns; vary a bit in overall size/shape because they are hand-crafted by many different knitting and crocheting artists. The eyes are “under age 3 approved” so they are safe for our patients.

## FIDGET FROGS



Original creation of Community Partner Hannah B., high school student

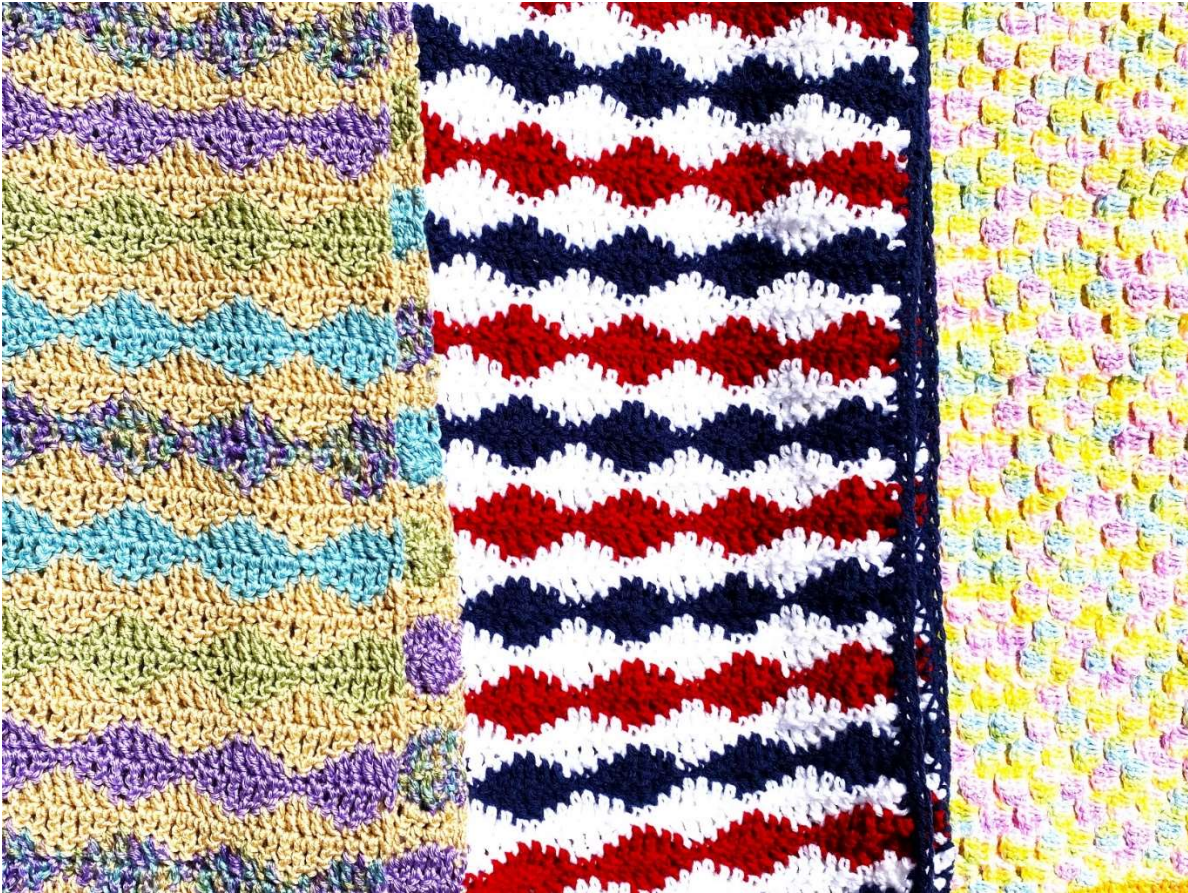
An alternative to fidget mats (**which cannot be left with patients in facilities, due to overabundant caution.**) The delightfully gangly arms and legs keep fidgety finger safely occupied. The nubby crochet stitch provides a tactile experience. The colors are stimulating, and its softness is cuddly and soothing. Crafted in many colors and patterns; vary in overall size. The eyes are “under age 3 approved” so they are safe for our patients.

# LAP-SIZE QUILTS\*



**\*Due to the time it takes to make these (upwards of 40 hours,) we ask that you use them for benchmark events, such as birthdays, anniversaries, WWII Vets, etc.** Lap-size is generally 36 in. X 48 in., though they vary a bit. Sometimes we get twin bed-sized, perfect for patients who are bed-bound. We get a variety of patterns, themes, and colorways, so please ask if you need a special quilt for a patient's special event.

# LAP-SIZED KNITTED/CROCHETED BLANKETS



Available in a wide variety of colors and patterns; red, white, blue for our Veterans.  
Generally 36 in x 48 in., though they may vary a bit.

# KNOTTED FLEECE LAP BLANKETS



Hand-knotted or hand-appliqued; generally 36 in. x 48 in., though sometimes a bit larger or smaller.

# LEGACY BOOKS



Updated and improved in 2023 by Community Partner, Kyla L., high school student.

Memory books to record basic biographic information, as well as important milestones of a patient's life. Volunteers or family members can record the patient's response to the prompts. Perfect mementoes for grandchildren and great-grands, as well as a life review for the patient. We have so many themes and colorways, we're sure to match your patient's style!