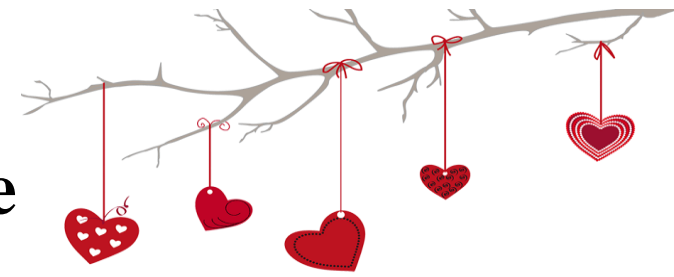


February 2022

Carmel Shot Schedule



Sunday	Monday	Tuesday	Wednesday	Thursday	Friday	Saturday
Office closed for lunch from 12 – 1pm		1 8:30am-5:00pm	2 7:30am-4:30pm	3 9:00am-5:15pm	4 <i>Thank a Mailman Day</i>	5 Visit us online at www.aacionline.com (check online for unexpected closings)
6 <i>Superbowl Sunday</i>	7 CLOSED	8 8:30am-5:00pm	9 7:30am-4:30pm	10 9:00am-5:15pm	11	12
13	14 8:00am-5:00pm	15 8:30am-5:00pm	16 7:30am-4:30pm	17 9:00am-5:15pm	18	19
20	21 CLOSED	22 8:30am-5:00pm	23 7:30am-4:30pm	24 9:00am-5:15pm	25	26 <i>Carpe Diem Day</i>
27	28 8:00am-5:00pm					Main Office 11590 North Meridian, Ste 400, Carmel, IN 46032 317-708-2839

Xolair/NUCALA/Fasenra/Dupixent Injections Only:

Please arrive **one hour** prior to the end of AM or PM shot times. Office closed for lunch 12-1 PM.

*Just starting? For your first, second, and third doses, please come during the first hour of our morning office hours or the first hour of our afternoon office hours.