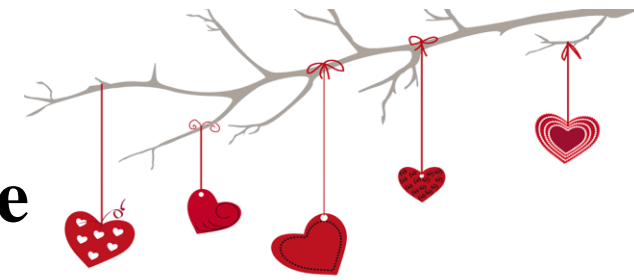


February 2022

Greenfield Shot Schedule



| Sunday | Monday | Tuesday | Wednesday | Thursday | Friday | Saturday |
|---------------------------------------|--------|---------------------|-----------|---------------------|--------------------------|---|
| Office closed for lunch from 12 – 1pm | | 1 7:30am-4:30pm | 2 | 3 8:00am-5:00pm | 4 Thank a Mailman Day | 5 Visit us online at www.aacionline.com (check online for unexpected closings) |
| 6 Superbowl Sunday | 7 | 8 7:30am-4:30pm | 9 | 10 8:00am-5:00pm | 11 | 12 |
| 13 | 14 | 15 7:30am-4:30pm | 16 | 17 8:00am-5:00pm | 18 | 19 |
| 20 | 21 | 22 7:30am-4:30pm | 23 | 24 8:00am-5:00pm | 25 | 26 Carpe Diem Day |
| 27 | 28 | | | | | Main Office 11590 North Meridian, Ste 400, Carmel, IN 46032 317-708-2839 |

Xolair/NUCALA/FASENRA/Dupixent Injections Only:

Please arrive one hour prior to the end of AM or PM shot times. Office closed for lunch 12-1 PM.

*Just starting? For your first, second, and third doses, please come during the first hour of our morning office hours or the first hour of our afternoon office hours.