

2019 THE FUTURE IN PERFECT CLARITY

MP
MICHAEL PHELPS

DESIGNED by



TWENTY 19

BUYERS GUIDE



BUYERS GUIDE CONTENTS



MENS TRAINING SUITS
STARTS PAGE 26-28



WOMENS TRAINING SUITS
STARTS PAGE 32-35



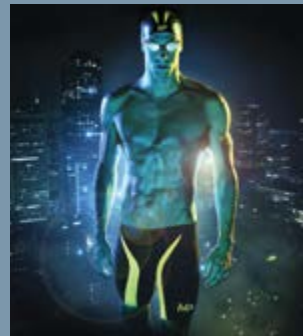
TECHNIQUE PADDLE
IMPROVE YOUR STROKE PAGE 53



GEAR YOUR SWIM
BACK PACK & TOWEL PAGE 56

MP RACE KIT

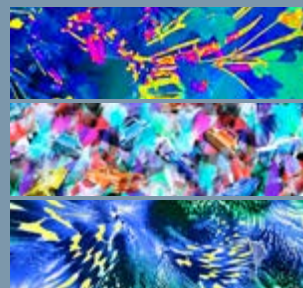
XPRESSO TECH SUIT	8
MPULSE TECH SUIT	10
XCEED GOGGLE	36
X-0 COMPETITION CAP	46

MP TEAM SWIMWEAR
SUIT YOUR TEAM

SPLICE	14
PRINTS	15
SOLIDS	16

ELITE TRAINING SUITS
EVOLUTION COLLECTION

FUSION	20
VINTAGE	21
VITAL	22

CHRONOS GOGGLE
NEW MIRRORRED LENSES

TECHNOLOGY	40
CHRONOS GOGGLE	41



4	INTRO
6	SWIMWEAR
8	XPRESSO TECH SUIT
10	MPULSE TECH SUIT
12	MP TEAM SWIMWEAR
18	ELITE TRAINING SUIT <i>EVOLUTION COLLECTION</i>
24	TRAINING SUITS
36	SWIMWEAR SIZE AND FIT
38	SWIM GOGGLES
40	XCEED
42	K180
44	CHRONOS
48	EQUIPMENT
50	CAPS
52	STRENGTH PADDLE
53	TECHNIQUE PADDLE
54	FOCUS SWIM SNORKEL
54	FOCUS RESTRICTOR CAP
55	ALPHA PRO FINS
56	BACKPACK
56	TOWEL
57	GEAR BAG
58	FOLLOW THE MP TEAM

THE FUTURE IN PERFECT CLARITY



INNOVATIVE ADVANCED SWIM EQUIPMENT

The MP brand creates technologically advanced, performance-enhancing swim products, driven by the ultimate desire to improve the sport of swimming. Incorporating the unique insights and exceptional real-life experience provided by Michael Phelps and Coach Bob Bowman, our products offer innovative features that work with natural body mechanics, helping competitive swimmers reach their peak performance.

Developed in Partnership
with Michael Phelps
and Coach Bob Bowman

Michael Phelps and Bob Bowman have arguably more experience training and competing at the highest levels of elite swimming than any other people on the planet.





SWIMWEAR

TRAIN & COMPETE



XPRESSO TECH SUIT

“ The Best and Most Comfortable Suit I Have Ever Worn ” - Michael Phelps

TECH SUITS



SWIMWEAR COLLECTION

TECH SUITS

TEAM SWIMWEAR

ELITE TRAINING SUITS

TRAINING SUITS



XPRESSO

XPRESSO TECH SUIT

HYDRODYNAMIC

Fabric limits water absorption



AQUA-CORE

*High level compression
and better circulation*



EXO-FOIL

*3D fabric - Better range
of motion and flexibility*

BONDED SEAMS

*Reduced drag and provide
structure and support*

INTERNAL SILICONE LEG GRIPS

Ensures precise fit



Designed in France

Manufactured in Italy

The XPRESSO competition tech suit is engineered with Aqua Sphere's exclusive Exo-Core technology – a combination of ExoFoil and Aqua Core.

The combination of these two fabrics delivers the highest level of performance.

- Hydrodynamic fabric limits water absorption
- Bonded seams reduce drag and provide structure and support to the body
- Internal silicone leg grips ensure a precise fit
- Suit designed in France and manufactured in Italy
- Fabric Made in Italy
- FINA Approved



CW0010121



CW0010171



CW0010115



CM0010121



CM0020171



CM0010115



XPRESSO MENS



MPULSE TECH SUIT

DYNAMIX TECHNOLOGY
*High compression textile
71% Polyamide 29% Elastane*

DynamiX

FLAT LOCK SEAMS
Thickness and Glide

**INTERNAL SILICONE
LEG GRIPS**
Ensures precise fit

MENS SIZES : 20-38 (USA)

WOMENS SIZES : 18-38 (USA)



CW0050171



CM0030171

The MPulse is an excellent value tech suit perfect for the budget-conscious swimmer who wants the benefits of a compression suit and comfort of a training suit. Featuring Dynamix compression textile and flat-lock stitched seams, this FINA approved suit has a hydrophobic construction to provide maximum glide efficiency and support level compression to stabilize muscles and improve circulation. Swimmers will enjoy a streamlined glide through the water, whether they're training or competing. The sleek, minimalist design - all black with a punch of yellow - means you'll look fierce while feeling great.

- Ideal for youth and Masters swimmers
- FINA Approved
- Water repellent fabric
- Flat lock stitching reduces drag and improves swimming efficiency
- Full inner brief lining offers support and modesty
- Internal silicone leg grips ensure a precise fit
- Elastic waistband with drawstring
- Fabric made in Italy

MPULSE WOMEN



MPULSE MEN



TEAM SUITS

OUTFIT YOUR TEAM



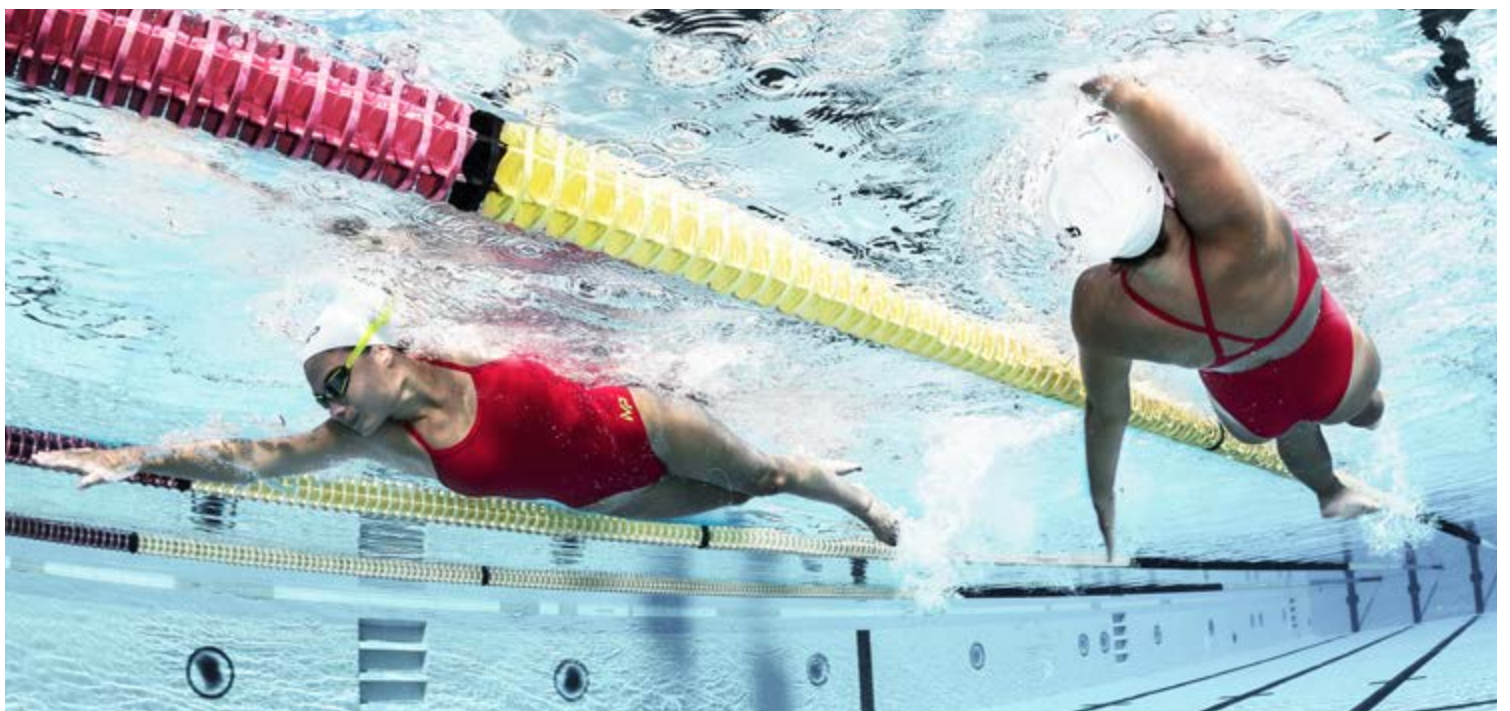
JOIN THE TEAM



Introducing the MP Team Line.
We are a spirit, a movement and a commitment to success.
It takes a Team. Lets get there together.



#WEAREMP





SPLICE
NAVY/ORANGE
COMP BACK



SPLICE
NAVY/ORANGE
MID BACK



SPLICE
NAVY/ORANGE
JAMMER



SPLICE
NAVY/ORANGE
BRIEF

SPLICE

ATHLETIC CUTS

Inspired by Michael Phelps

AQUA INFINITY FABRIC

100% POLYESTER

53% Polyester / 47% PBT

200+ HOURS

Chlorine resistance and durable fabric elasticity

UPF 50+

FABRIC MADE IN ITALY

WOMEN SUITS

FULLY LINED

Added modesty and durability

HIGHER NECK LINE

Prevents water entry

OPEN STRAP DESIGN

Fits neatly between the shoulder blades and fits a variety of bodies

PANELED HIP DESIGN

For a natural, contoured fit

MENS SIZES : 20-38

WOMENS SIZES : 18-38

ALL SUITS FULLY LINED



SW2560408 Navy/Orange
SW2560142 Black/Royal
SW2560106 Black/Red
SW2560103 Black/Green



COMP BACK



SW2520408 Navy/Orange
SW2520142 Black/Royal
SW2520106 Black/Red
SW2520103 Black/Green



MID BACK



3 INCH = 7.62 cm
OUTSEAM



SM2480103 Black/Green
SM2480106 Black/Red
SM2480142 Black/Royal
SM2480408 Navy/Orange



18.5 INCH = 47 CM
LENGTH



SM2440103 Black/Green
SM2440106 Black/Red
SM2440142 Black/Royal
SM2440408 Navy/Orange

PRINTS

ATHLETIC CUTS

Inspired by Michael Phelps

AQUA INFINITY FABRIC

100% POLYESTER

53% Polyester / 47% PBT

200+ HOURS

Chlorine resistance and durable fabric elasticity

UPF 50+

FABRIC MADE IN ITALY

WOMEN SUITS

FULLY LINED

Added modesty and durability

HIGHER NECK LINE

Prevents water entry

OPEN STRAP DESIGN

Fits neatly between the shoulder blades and fits a variety of bodies

PANELED HIP DESIGN

For a natural, contoured fitDIABLO
ROYAL
COMP BACKMESA
ROYAL
MID BACKMESA
ROYAL
JAMMERDIABLO
ROYAL
BRIEF

MENS SIZES : 20-38

WOMENS SIZES : 18-38

ALL SUITS FULLY LINED





SOLID
RED
COMP BACK



SOLID
RED
MID BACK



SOLID
RED
JAMMER



SPLICE
RED
BRIEF



SPLICE
RED
BOXER

SOLIDS

ATHLETIC CUTS

Inspired by Michael Phelps

AQUA INFINITY FABRIC

100% POLYESTER

53% Polyester / 47% PBT

200+ HOURS

Chlorine resistance and durable fabric elasticity

UPF 50+

FABRIC MADE IN ITALY

WOMEN SUITS

FULLY LINED

Added modesty and durability

HIGHER NECK LINE

Prevents water entry

OPEN STRAP DESIGN

Fits neatly between the shoulder blades and fits a variety of bodies

PANELED HIP DESIGN

For a natural, contoured fit

MENS SIZES : 20-38

WOMENS SIZES : 18-38

ALL SUITS FULLY LINED



5.5 INCH = 14 cm
OUTSEAM



SM2954242 Royal Blue SM2950606 Red SM2950404 Navy Blue SM2950303 Green SM2950101 Black



SW2570101 Black SW2570303 Green SW2570404 Navy SW2570606 Red SW2574242 Royal

COMP BACK



SW2530101 Black SW2530303 Green SW2530404 Navy SW2530606 Red SW2534242 Royal

MID BACK



3 INCH = 7.62 cm
OUTSEAM



SM2494242 Royal SM2490606 Red SM2490404 Navy SM2490303 Green SM2490101 Black



18.5 INCH = 47 CM
LENGTH



SM2454242 Royal SM2450606 Red SM2450404 Navy SM2450303 Green SM2450101 Black



ELITE TRAINING

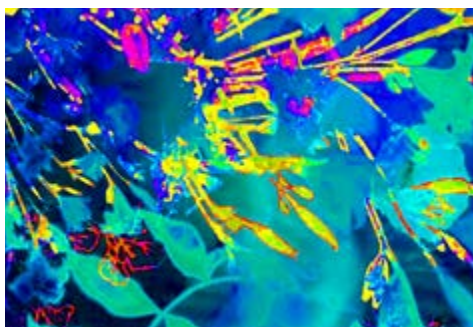
THE EVOLUTION COLLECTION



Inspired by the vibrant world around us, the Evolution Collection is infused with rich textures and artistic vibes. The bright colors of Vintage, Vital and Fusion evoke boldness, creativity and fun.

ABOUT ELITE TRAINING SUITS

- Suit prints personally selected by Michael Phelps
- Aqua Infinity fabric- technologically advanced, breathable, 100% polyester fabric that is chlorine resistant, fast-drying and has UV50+ protection
- High chlorine resistance - fabric elasticity remains the same, even after 200+ hours inside chlorinated water
- Extremely long-lasting resistance to sweat and sun creams
- Silicone straps offer better chlorine resistance and durability
- Fabric made in Italy



FUSION PAGE 20



VINTAGE PAGE 21



VITAL PAGE 22



NEW

FUSION

AQUA INFINITY FABRIC
A Polyester / PBT fabric is ideal for swim training - breathable and fast drying

100% POLYESTER
53% Polyester / 47% PBT

200+ HOURS
Chlorine resistance and durable fabric elasticity

UPF 50+

FABRIC MADE IN ITALY

WOMENS RACING & OPEN BACK
Thin silicone straps for enhanced durability and stretch

MENS JAMMER
44 cm = 18 in length

MENS BRIEF
14 cm = 5.5 in out seam
6.5 cm = 2.5 in out seam

MENS SIZES : 22-38

WOMENS SIZES : 24-38

**INTERNAL SUIT LINER
VARIES PER MARKET**



WOMENS OPEN BACK

SW3289901
black liner

SW3379901
gusset liner



MENS JAMMER

SM3409901
inside brief



MENS 6.5 CM BRIEF

SM3399999
black liner

SM3389999
gusset liner



WOMENS RACING BACK

SW3309901
black liner

SW3399901
gusset liner



WOMENS TWO PIECE

TOP
SW3419999
black liner



BOTTOM
SW3250101
black liner



MENS 14 CM BRIEF

SM3379999
black liner

SM3369999
gusset liner

VINTAGE

NEW

AQUA INFINITY FABRIC

A Polyester / PBT fabric is ideal for swim training - breathable and fast drying

100% POLYESTER

53% Polyester / 47% PBT

200+ HOURS

Chlorine resistance and durable fabric elasticity

UPF 50+

FABRIC MADE IN ITALY

WOMENS RACING & OPEN BACK

Thin silicone straps for enhanced durability and stretch

MENS JAMMER

44 cm = 18 in length

MENS BRIEF

14 cm = 5.5 in out seam

6.5 cm = 2.5 in out seam



MENS SIZES : 22-38

WOMENS SIZES : 24-38

INTERNAL SUIT LINER
VARIES PER MARKET

WOMENS
OPEN BACK

SW3279901
black liner

SW327990
gusset liner

MENS
JAMMER

SM3309901
inside brief

MENS
6.5 CM BRIEF

SM3299999
black liner

SM3289999
gusset liner

WOMENS
RACING BACK

SW3309901
black liner

SW3299901
gusset liner

WOMENS
TWO PIECE

TOP
SW3319999
black liner



BOTTOM
SW3250101
black liner

MENS
14 CM BRIEF

SM3279999
black liner

SM3269999
gusset liner



NEW

VITAL

AQUA INFINITY FABRIC
A Polyester / PBT fabric is ideal for swim training - breathable and fast drying

100% POLYESTER
53% Polyester / 47% PBT

200+ HOURS
Chlorine resistance and durable fabric elasticity

UPF 50+

FABRIC MADE IN ITALY

WOMENS RACING & OPEN BACK
Thin silicone straps for enhanced durability and stretch

MENS JAMMER
44 cm = 18 in length

MENS BRIEF
14 cm = 5.5 in out seam
6.5 cm = 2.5 in out seam

MENS SIZES : 22-38

WOMENS SIZES : 24-38

**INTERNAL SUIT LINER
VARIES PER MARKET**



**WOMENS
OPEN BACK**

SW3339901
black liner

SW3329901
gusset liner



**MENS
JAMMER**

SM3359901
inside brief



**MENS
6.5 CM BRIEF**

SM3349999
black liner

SM3339999
gusset liner



**WOMENS
RACING BACK**

SW3359901
black liner

SW3349901
gusset liner



**WOMENS
TWO PIECE**

TOP
SW3369999
black liner



BOTTOM
SW3250101
black liner



**MENS
14 CM BRIEF**

SM3329999
black liner

SM3319999
gusset liner



TRAINING

EVERYDAY SWIMMING



The MP Training Suit line was designed to specifically meet the needs of fitness swimmers who want classic designs with a hint of fashion to take them through every training session. You'll love the sporty designs, on trend colors and reliable comfort of these suits.

ABOUT TRAINING SUITS

- Adult Fabrics: Aqua Infinity, VITA
- Junior Fabrics: Aqua First
- UV50+ protection
- Womens Suits: Front black lining
- High chlorine resistance, durability and fast drying
- Long-lasting resistance to sweat and sun creams





CAMILYA
ADJUSTABLE STRAPS
REMOVABLE CUPS



**WOMENS
CAMILYA**
SW3600142
BLACK / ROYAL



**WOMENS
CAMILYA**
SW3600143
BLACK / TURQUOISE



**WOMENS
CAMILYA**
SW3600150
BLACK / LILAC



**WOMENS
CAMILYA**
SW3600151
BLACK / B. PURPLE

NEW

WOMENS TRAINING

CAMILYA

VITA FABRIC

An Xtra life lycra fabric that offers both comfort and chlorine resistance

FABRIC

80% Polyamide 20% Elastane

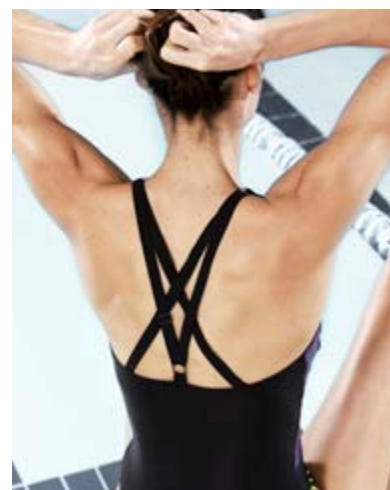
FOUR WAY STRETCH

Soft touch

UPF 50+

WOMENS SIZES : 24-36

FRONT BLACK LINING



WOMENS TRAINING

NEW

HANOI

VITA FABRIC

An Xtra life lycra fabric that offers both comfort and chlorine resistance

FABRIC

80% Polyamide 20% Elastane

FOUR WAY STRETCH

Soft touch

UPF 50+

WOMENS SIZES : 24-36

FRONT BLACK LINING



HANOI
REMOVABLE CUPS
FIXED STRAPS



**WOMENS
HANOI**
SW3580121
BLACK / B. PINK



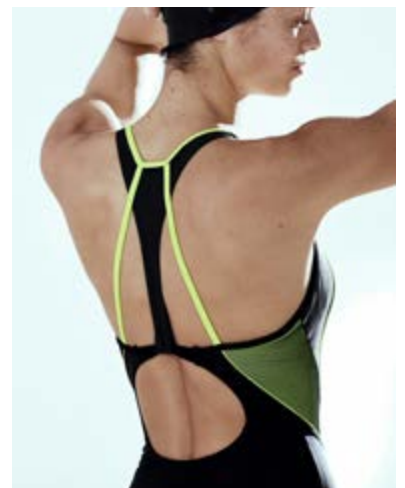
**WOMENS
HANOI**
SW3580143
BLACK / TURQUOISE



**WOMENS
HANOI**
SW3580162
BLACK / LT. RED



**WOMENS
HANOI**
SW3580171
BLACK / B. YELLOW





KALISTA
ADJUSTABLE STRAPS
BUST SUPPORT



**WOMENS
KALISTA**
SW3590121
BLACK / B. PINK



**WOMENS
KALISTA**
SW3590143
BLACK / TURQUOISE



**WOMENS
KALISTA**
SW3590150
BLACK / LILAC



**WOMENS
KALISTA**
SW3590171
BLACK / B. YELLOW

NEW

WOMENS TRAINING

KALISTA

AQUA INFINITY FABRIC
A Polyester / PBT fabric is ideal for swim training - breathable and fast drying

100% POLYESTER
53% Polyester / 47% PBT

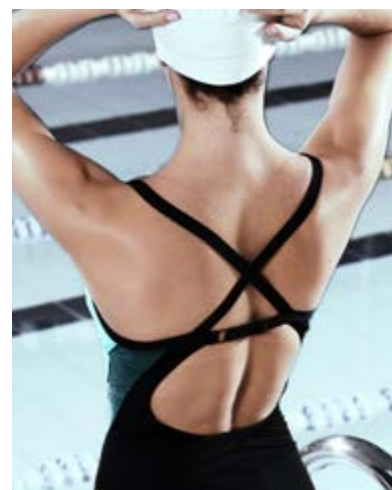
200+ HOURS
Chlorine resistance and durable fabric elasticity

UPF 50+

FABRIC MADE IN ITALY

WOMENS SIZES : 24-36

FRONT BLACK LINING



WOMENS TRAINING

NEW

KUTA

AQUA INFINITY FABRIC
A Polyester / PBT fabric is ideal for swim training - breathable and fast drying

100% POLYESTER
53% Polyester / 47% PBT

200+ HOURS
Chlorine resistance and durable fabric elasticity

UPF 50+

FABRIC MADE IN ITALY

WOMENS SIZES : 24-36

FRONT BLACK LINING



KUTA
ADJUSTABLE STRAPS



WOMENS
KUTA
SW3570109
BLACK / WHITE



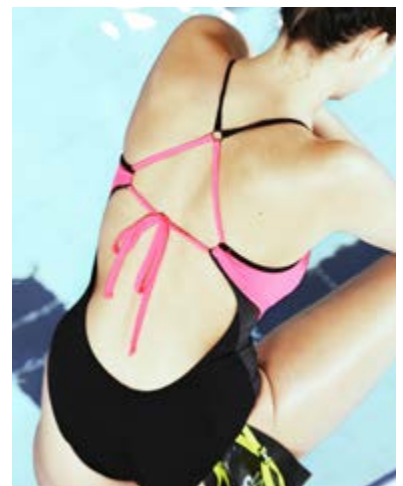
WOMENS
KUTA
SW3570121
BLACK / B. PINK



WOMENS
KUTA
SW3570142
BLACK / ROYAL



WOMENS
KUTA
SW3570171
BLACK / B. YELLOW





ARKOS
JAMMER



ARKOS
BOXER



ARKOS
BRIEF



ARKOS
JAMMER

NEW

MENS TRAINING

ARKOS

AQUA INFINITY FABRIC
A Polyester / PBT fabric is ideal for swim training - breathable and fast drying

100% POLYESTER
53% Polyester / 47% PBT

200+ HOURS
Chlorine resistance and durable fabric elasticity

UPF 50+

FABRIC MADE IN ITALY

DRAWSTRING WAIST

MENS SIZES : 26-40

FRONT BLACK LINING



**MENS BOXER
ARKOS**
27.5 CM LENGTH
SM3560106
BLACK / RED



**MENS BOXER
ARKOS**
27.5 CM LENGTH
SM3560143
BLACK / TURQUOISE



**MENS JAMMER
ARKOS**
42 CM LENGTH
SM3570106
BLACK / RED



**MENS JAMMER
ARKOS**
42 CM LENGTH
SM3570143
BLACK / TURQUOISE



**MENS BRIEF
ARKOS**
8 CM LENGTH
SM3580106
BLACK / RED



**MENS BRIEF
ARKOS**
8 CM LENGTH
SM3580143
BLACK / TURQUOISE



**MENS BOXER
ARKOS**
27.5 CM LENGTH
SM3560171
BLACK / B. YELLOW



**MENS BOXER
ARKOS**
27.5 CM LENGTH
SM3560442
NAVY / ROYAL



**MENS JAMMER
ARKOS**
42 CM LENGTH
SM3570171
BLACK / B. YELLOW



**MENS JAMMER
ARKOS**
42 CM LENGTH
SM3570442
NAVY / ROYAL



**MENS BRIEF
ARKOS**
8 CM LENGTH
SM3580171
BLACK / B. YELLOW



**MENS BRIEF
ARKOS**
8 CM LENGTH
SM3580442
NAVY / ROYAL

MENS TRAINING

SWIFT & FAST & RUSH

AQUA INFINITY FABRIC

A Polyester / PBT fabric is ideal for swim training - breathable and fast drying

100% POLYESTER

53% Polyester / 47% PBT

200+ HOURS

Chlorine resistance and durable fabric elasticity

UPF 50+

FABRIC MADE IN ITALY

DRAWSTRING WAIST

MENS SIZES : 26-40

FRONT BLACK LINING



FAST
JAMMER



SWIFT
BOXER



RUSH
BRIEF



FAST
JAMMER



MENS BOXER
SWIFT
32 CM LENGTH
SM2530106
BLACK / RED



MENS BOXER
SWIFT
32 CM LENGTH
SM2530113
BLACK / GREY



MENS JAMMER
FAST
42 CM LENGTH
SM2520106
BLACK / RED



MENS JAMMER
FAST
42 CM LENGTH
SM2520113
BLACK / GREY



MENS BRIEF
RUSH
8 CM LENGTH
SM2620106
BLACK / RED



MENS BRIEF
RUSH
8 CM LENGTH
SM2620113
BLACK / GREY



MENS BOXER
SWIFT
32 CM LENGTH
SM2530143
BLACK / TURQUOISE



MENS BOXER
SWIFT
32 CM LENGTH
SM2530471
NAVY / B. YELLOW



MENS JAMMER
FAST
42 CM LENGTH
SM2520143
BLACK / TURQUOISE



MENS JAMMER
FAST
42 CM LENGTH
SM2520471
NAVY / B. YELLOW /



MENS BRIEF
RUSH
8 CM LENGTH
SM2620143
BLACK / TURQUOISE



MENS BRIEF
RUSH
8 CM LENGTH
SM2620471
NAVY / B. YELLOW



LEYO
JAMMER



KEIJY
BOXER



MANU
BRIEF



LEYO
JAMMER

NEW

MENS TRAINING

KEIJY & LEYO & MANU

AQUA INFINITY FABRIC
A Polyester / PBT fabric is ideal for swim training - breathable and fast drying

100% POLYESTER
53% Polyester / 47% PBT

200+ HOURS
Chlorine resistance and durable fabric elasticity

UPF 50+

FABRIC MADE IN ITALY

DRAWSTRING WAIST

MENS SIZES : 26-40

FRONT BLACK LINING



**MENS BOXER
KEIJY**
32 CM LENGTH
SM2600112
BLACK / GRAY



**MENS BOXER
KEIJY**
32 CM LENGTH
SM2600140
BLACK / BLUE



**MENS JAMMER
LEYO**
42 CM LENGTH
SW2610112
BLACK / GRAY



**MENS JAMMER
LEYO**
42 CM LENGTH
SW2610140
BLACK / BLUE



**MENS BRIEF
MANU**
8 CM LENGTH
SW2590112
BLACK / GRAY



**MENS BRIEF
MANU**
8 CM LENGTH
SW2590140
BLACK / BLUE



**MENS BOXER
KEIJY**
32 CM LENGTH
SM2600181
BLACK / B. ORANGE



**MENS BOXER
KEIJY**
32 CM LENGTH
SM2600471
NAVY / B. YELLOW



**MENS JAMMER
LEYO**
42 CM LENGTH
SW2610181
BLACK / B. ORANGE



**MENS JAMMER
LEYO**
42 CM LENGTH
SW2610471
NAVY / B. YELLOW



**MENS BRIEF
MANU**
8 CM LENGTH
SW2590181
BLACK / B. ORANGE



**MENS BRIEF
MANU**
8 CM LENGTH
SW2590471
NAVY / B. YELLOW





DYLAN
JAMMER



LONY
BOXER



TIMEO
BRIEF



DYLAN
JAMMER

NEW

BOYS TRAINING

DYLAN & LONY

AQUA INFINITY FABRIC
A Polyester / PBT fabric is ideal for swim training - breathable and fast drying

100% POLYESTER
53% Polyester / 47% PBT

200+ HOURS
Chlorine resistance and durable fabric elasticity

UPF 50+

FABRIC MADE IN ITALY

DRAWSTRING WAIST

TIMEO

AQUA FIRST FABRIC
A Polyester Blend - breathable and fast drying

POLYESTER BLEND
85% Polyester / 15% Elastane

CHLORINE RESISTANT

UPF 50+

DRAWSTRING WAIST

BOYS SIZES : 6Y - 14Y

FRONT BLACK LINING



BOYS BOXER
LONY
SJ2310143
BLACK / TURQUOISE



BOYS BOXER
LONY
SJ2310171
BLACK / B. YELLOW



BOYS JAMMER
DYLAN
SJ2320143
BLACK / TURQUOISE



BOYS JAMMER
DYLAN
SJ2320171
BLACK / B. YELLOW



BOYS BOXER
TIMEO
SJ2300106
BLACK / RED



BOYS BOXER
TIMEO
SJ2300143
BLACK / TURQUOISE



BOYS BOXER
LONY
SJ2310481
NAVY / B. ORANGE



BOYS BOXER
LONY
SJ2313042
L. GREEN / ROYAL



BOYS JAMMER
DYLAN
SJ2320481
NAVY / B. ORANGE



BOYS JAMMER
DYLAN
SJ2323042
L. GREEN / ROYAL



BOYS BOXER
TIMEO
SJ2304281
royal / B. ORANGE



BOYS BOXER
TIMEO
SJ2304371
TURQ / B. YELLOW

GIRLS TRAINING

NEW

LUMY

AQUA FIRST FABRIC

*A Polyester Blend -
breathable and fast drying*

POLYESTER BLEND

85% Polyester / 15% Elastane

CHLORINE RESISTANT

UPF 50+

TINA

AQUA INFINITY FABRIC

*A Polyester / PBT fabric is ideal for
swim training - breathable and
fast drying*

100% POLYESTER

53% Polyester / 47% PBT

200+ HOURS

*Chlorine resistance and
durable fabric elasticity*

UPF 50+

FABRIC MADE IN ITALY



LUMY



TINA



GIRLS SIZES : 6Y-14Y

FRONT BLACK LINING



**GIRLS
LUMY**
SJ2340115
BLACK / SILVER



**GIRLS
LUMY**
SJ2340171
BLACK / B. YELLOW



**GIRLS
LUMY**
SJ2342161
B. PINK / CORAL



**GIRLS
LUMY**
SJ2344371
TURQ / B. YELLOW



**GIRLS
TINA**
SJ2330121
BLACK / B. PINK



**GIRLS
TINA**
SJ2330171
BLACK / B. YELLOW



**GIRLS
TINA**
SJ2330550
PURPLE / LILAC



**GIRLS
TINA**
SJ2334343
BLACK / TURQUOISE

XPRESSO

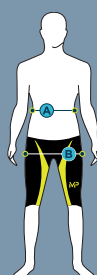
XPRESSO TECH SUIT - MEN'S SIZING CHART

A WAIST INCHES	28-29	29-30	30-31	31-32	32-33	33-34
A WAIST CM	71-74	74-76	76-79	79-81	81-84	84-87
B HIPS INCHES	33-34	34-36	36-38	38-39	39-40	40-41
B HIPS CM	84-87	87-92	92-97	97-99	99-102	102-104
FR	60	65	70	75	80	85
DE / A /CH	0	1	2	3	4	5
USA/UK	24	26	28	30	32	34
IT	38	40	42	44	46	48

XPRESSO TECH SUIT - WOMEN'S SIZING CHART

A WAIST INCHES	24-26	26-28	28-29	29-30	30-31	31-32
A WAIST CM	61-66	66-71	71-74	74-76	76-79	79-81
B HIPS INCHES	32-34	34-36	36-38	38-40	40-42	42-44
B HIPS CM	81-87	87-92	92-97	97-102	102-107	107-112
C CHEST INCHES	32-33	33-35	35-36	36-38	38-39	39-40
C CHEST CM	81-84	84-89	89-92	92-97	97-99	99-102
D BODY LOOP INCHES	57-58	59-60	61-62	63-64	65-66	67-68
D BODY LOOP CM	145	150	155	160	165	170
FR	30	32	34	36	38	40
DE / A /CH	28	30	32	34	36	38
USA/UK	24	26	28	30	32	34
IT	34	36	38	40	42	44

XPRESSO



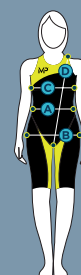
XPRESSO TECH SUIT - SIZING

WAIST: Measure around your torso at the narrowest part.

HIPS: Measure around your hips at the widest part.

CHEST: Measure across your back and over the fullest part of your bust.

BODY LOOP: From the top of your shoulder, pass diagonally across the body, through your legs and back up to the shoulder.



NOTE: THIS CHART IS INTENDED TO BE USED AS A GENERAL SIZING GUIDELINE.
We recommend that swimwear should be tried on each individual swimmer to ensure a perfect fit.

TRAINING - MPULSE - TEAM

TRAINING SUITS - MEN'S SIZING CHART

FR	55	60	65	70	75	80	85	90	95
DE / A / CH	X	0	1	2	3	4	5	6	7
IT	36	38	40	42	44	46	48	50	52
USA/UK	22	24	26	28	30	32	34	36	38

TRAINING SUITS - WOMEN'S SIZING CHART

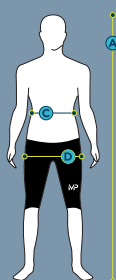
DRESS SIZE		0	2	4	6	8	10	12	14
FR	28	30	32	34	36	38	40	42	44
DE / A /CH	26	28	30	32	34	36	38	40	42
IT	32	34	36	38	40	42	44	46	48
USA/UK	22	24	26	28	30	32	34	36	38

MPULSE TECH SUIT & TEAM SUITS - MEN'S SIZING CHART

FR	50/6	55/8	60/10	65/12	70	75	80	85	90	95	100
DE / A / CH	104	116	128	140	2	3	4	5	6	7	8
IT	34/6	36	38	40	42	44	46	48	50	52	54
USA/UK	22	24	26	28	30	32	34	36	38	40	42
A HEIGHT CM	110-115	116-122	123-132	133-140	141-152	153-165	166-172	173-179	180-183	184-186	187-188
C WAIST CM	50	55	60	65	70	75	80	85	90	95	100
D HIPS CM	65	70	75	80	85	90	95	100	105	110	115

MPULSE TECH SUIT & TEAM SUITS - WOMEN'S SIZING CHART

FR	24/6	26/8	28/10	30/12	32	34	36	38	40	42	44
DE / A / CH	116	128	140	152	30	32	34	36	38	40	42
IT	28/6	26/8	28/10	30/12	36	38	40	42	44	46	48
USA/UK	18	20	22	24	26	28	30	32	34	36	38
A HEIGHT CM	116-122	123-132	133-140	141-152	165	168	170	172	174	176	178
B CHEST CM	57	60	65	70	76-80	81-84	85-90	91-95	96-100	101-105	106-110
C WAIST CM	55	57	59	60	59-61	62-65	66-70	71-75	76-80	81-85	86-90
D HIP CM	65	68	73	82-84	85-87	88-90	91-95	96-100	101-105	106-110	111-115



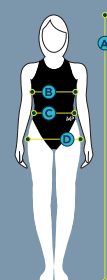
MPULSE TECH SUIT & TEAM SUITS - SIZING

HEIGHT: Measure your height, head to toe.

CHEST: Measure across your back and over the fullest part of your bust.

WAIST: Measure around your torso at the narrowest part.

HIPS: Measure around your hips at the widest part.



NOTE: THIS CHART IS INTENDED TO BE USED AS A GENERAL SIZING GUIDELINE.
We recommend that swimwear should be tried on each individual swimmer to ensure a perfect fit.

SWIM GOGGLES

VISION & PERFORMANCE



XCEED GOGGLE

“ The XCEED goggles are the best goggles that I have ever worn - they are super comfortable and the vision is insane ” - Michael Phelps



EYE PROTECTION COLLECTION

XCEED



K180



CHRONOS





TITANIUM MIRROR
"GOLD EDITION"

XCEED

THE FUTURE
IN PERFECT CLARITY

XCEED

EXO-CORE TECHNOLOGY
Combining two materials for maximum performance

CURVED LENS TECHNOLOGY
*Wide Peripheral Vision
Patented technology*

POLYCARBONATE LENS
*Anti-Fog treatment
Anti-Scratch treatment*

ANATOMICAL GASKETS
Great comfort and seal

INTERCHANGEABLE NOSE BRIDGE
4 Sizes for custom fit

LADIES
4 Smaller sized nose bridges

LOW PROFILE STRAP
*Quality Silicone
Grip effect & Easy adjust*

LOW PROFILE HEAD BUCKLE
*Quick adjusting and
Hydrodynamic*



CURVED LENS



ULTRA SOFT GASKET



LOW PROFILE



4 NOSE BRIDGE SIZES



The XCEED competition goggle combines patented curved lens technology and a hydrodynamic low profile fit to give swimmers a competitive edge in perfect clarity. In addition, the XCEED Titanium

Mirror is further enhanced with a layered titanium metal coating for enhanced sun and glare protection.

- Developed with Michael Phelps and Bob Bowman
- Engineered with Exo-Core™ technology, combining two materials for maximum performance
- Ultra soft Softeril gasket provides a water tight seal and max-comfort
- Semi rigid exoskeleton maximizes the structure, strength and stability of the goggle
- Expanded field of vision allows the swimmer to sight walls and the competition without altering head position
- 180 degree panoramic vision
- Easy-adjust head strap
- 100% UV protection



XCEED EP131131
Titanium Mirror Blue



XCEED EP131123
Titanium Mirror Gold



XCEED EP131129
Titanium Mirror Red



XCEED EP131126
Mirror Yellow/Black



LADIES

XCEED EP131117
Mirror Pink/Black



XCEED EP131119
Smoke Grey/Black



XCEED EP131113
Smoke Blue/Black



LADIES

XCEED EP131115
Smoke Pink/Black



XCEED EP131124
Blue White/Black



LADIES

XCEED EP131132
Pink White/Pink

XCEED LENS OPTIONS



TITANIUM MIRROR LENS
a layered titanium metal coating for enhanced sun and glare protection for maximum visibility in bright conditions. In Gold, Red and Blue



MIRROR LENS
Mirrored finish for maximum visibility in bright light conditions.



SMOKE LENS
significantly reduce light transmission to the eyes making it ideal for bright light and outdoor daily conditions.



BLUE LENS
are perfect for morning or evening swims where moderate glare protection is needed.



PINK LENS
give a fashionable look and give back some red colors that the blue of the water takes away. Ideal for indoor swim.



CLEAR LENS
are ideal for indoor, low light, or overcast conditions where maximum visibility is required.



K180

K180

CURVED LENS TECHNOLOGY
Wide Peripheral Vision
Patented technology

POLYCARBONATE LENS
Anti-Fog treatment
Anti-Scratch treatment

INTERCHANGEABLE NOSE BRIDGE
3 Sizes

LADIES
3 Smaller sized nose bridges

LOW PROFILE STRAP

MICRO HEAD BUCKLES

LOW PROFILE SIDE LOOPS



**SMALL GOGGLE
BIG VISION**

CURVED LENS



ULTRA SOFT GASKET



LOW PROFILE



3 NOSE BRIDGE SIZES



Small goggle – big vision. The asymmetrical, anatomic lens design of the K180 offers a natural watertight fit with integrated curved lenses for a wide field of vision in a low profile goggle. The soft gaskets and adjustable nose bridge ensure ultimate comfort.

- Engineered with Exo-Core technology combining two materials for maximum performance
 - Ultra soft Softeril gasket provides maximum comfort and a leak resistant seal
 - Semi-rigid exoskeleton maximizes the structural strength and stability of the goggle
- 180-degree panoramic vision
- Anti-fog treated Polycarbonate lenses
- Anatomic lens shape for water-tight fit
- Curved lens and integrated strap loop enhances hydrodynamics
- Easy-adjust head strap
- 100% UV protection
- 3 interchangeable nose bridges
- FINA approved



K180 EP112123
Mirror Yellow/Black



K180 EP112114
Clear Silver/Black



K180 EP112122
Smoke Yellow/Black



K180 EP112116
Smoke Silver/Black



K180 EP113119
Violet White/Black



K180 EP112126
Orange White/Black

LADIES



K180 EP112125
Yellow White/Black



K180 EP112127
Blue White/Black

K180 LENS OPTIONS



MIRROR LENS
Mirrored finish for maximum visibility in bright light conditions.



SMOKE LENS
significantly reduce light transmission to the eyes making it ideal for bright light and outdoor.



CLEAR LENS
are ideal for indoor, low light, or overcast conditions for maximum visibility.



BLUE LENS
are perfect for morning or evening swims for moderate glare protection.



YELLOW LENS
enhances vision in poor light environment. They are ideal for indoor or evening swims.



ORANGE LENS
enhances vision in poor light environment and give you back red colors. Ideal for indoor or evening swims.



VIOLET LENS
are fashionable and perfect for morning or evening swims for moderate glare protection.



CHRONOS

CHRONOS

GEOPLEX LENS TECHNOLOGY
Enhanced front, downward, forward and lateral vision

SOFTERIL MICRO-GASKET

ANATOMICAL LENS SHAPE
Water Tight Fit

POLYCARBONATE LENS

EASY ADJUST HEAD STRAP

CUSTOMIZABLE NOSE PIECE



CHRONOS
IT'S ABOUT TIME

GEOPLEX LENS TECHNOLOGY



- a. Forward vision
- b. Downward vision
- c. Front vision
- d. Wide lateral vision

MICRO-GASKET



CUSTOMIZABLE



MP's modern take on the Swedish-style goggle. For our Swede, we didn't settle-- we used our patent-pending Geoplex lens technology to offer distortion-free, superior vision in each direction. And for your long training days, you'll appreciate our Softeril micro gasket for better comfort and watertight fit. Chronos: It's about time.

- Geoplex lens technology: precise geometric and optical lens surfaces enhance front, downward, forward and lateral vision
- Expanded optically correct vision due to patent pending Geoplex lens technology
 - Forward vision due to flat, precision oriented lens surface
 - Downward and Front vision due to plain-curved lens design (patent)
 - Wide lateral vision due to perfect cylindrical geometry
- Softeril micro-gasket
- Anatomic lens shape for water-tight fit
- Polycarbonate lenses
- Easy-adjust head strap
- 100% UV protection
- Customizable nose piece
- FINA approved

NEW

CHRONOS EP143122
Mirror Lens White/WhiteCHRONOS EP143123
Red Mirror Lens White/Lime

NEW

CHRONOS
REPLACEMENT STRAPS (3)
SA184111CHRONOS EP143113
Smoke Lens Black/BlackCHRONOS EP143111
Clear Lens Blue/ LimeCHRONOS EP143117
Pink Lens Pink/WhiteCHRONOS EP143114
Blue Lens White/BlueCHRONOS EP143116
Green Lens Green/WhiteCHRONOS EP143115
Lime Lens Lime/Lime

CHRONOS LENS OPTIONS



MIRROR LENS
Mirrored finish for maximum visibility in bright light conditions.



SMOKE LENS
significantly reduce light transmission to the eyes making it ideal for bright light and outdoor.



CLEAR LENS
are ideal for indoor, low light, or overcast conditions for maximum visibility.



BLUE LENS
are perfect for morning or evening swims for moderate glare protection.



YELLOW LENS
enhances vision in poor light environment. They are ideal for indoor or evening swims.



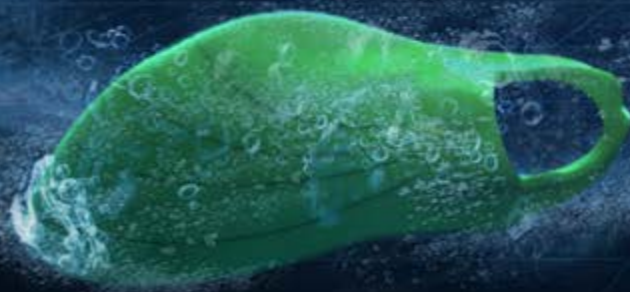
GREEN LENS
are perfect to relax your eyes in poor light environment. Ideal for indoor or overcast swimming.



PINK LENS
give a fashionable look and replaces some blue water for red. Ideal for indoor swimming.

CHRONOS

IT'S ABOUT TIME





MP
MICHAEL PHELPS

DESIGNED by

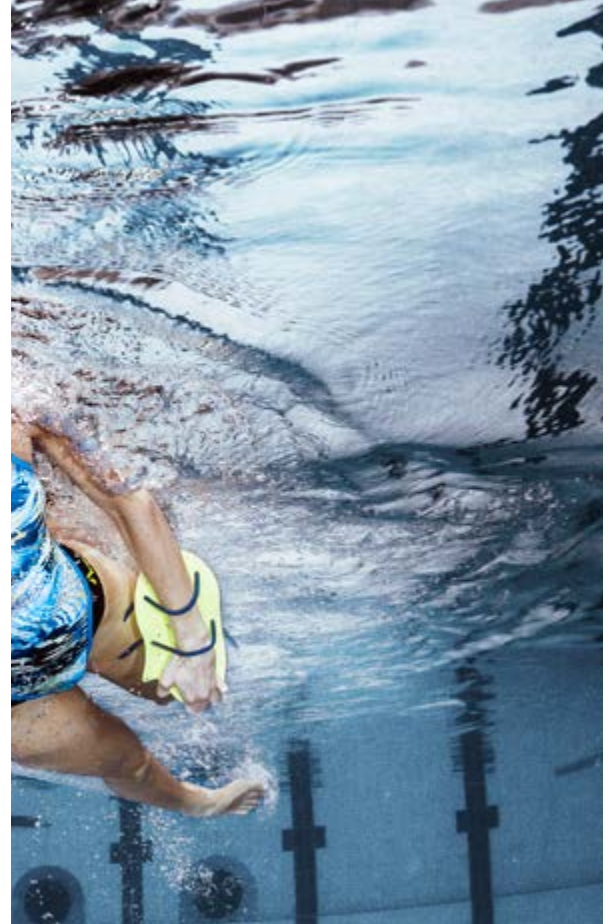


EQUIPMENT

GEAR YOUR SWIM



Technical Innovations - Designed for Performance



EQUIPMENT

X-O CAP

RACE CAPS

STRENGTH PADDLE

TECHNIQUE PADDLE

FOCUS SWIM SNORKEL

ALPHA PRO FIN

TEAM BACK PACK

MP TOWEL

GEAR BAG



X-O



BRT YELLOW / BLACK
SM SA122137
MD SA122138
LG SA122139



BLACK / SILVER
SM SA122134
MD SA122135
LG SA122136

X-O CAP

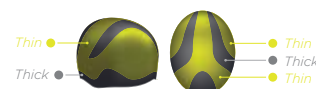
PERFORMANCE CUT

Ergonomically designed to follow the shape of the head.



EXO-CORE TECHNOLOGY

Combining two durometers of silicone for maximum performance.



INTERNAL DIMPLING

STABILIZING RIBS

Prevent movement



AVAILABLE IN 3 SIZES

Small, Medium, Large

RECOMMENDED

USE WITH COMPRESSION CAP



Developed in Partnership
with Michael Phelps
and Coach Bob Bowman

Engineered with integrated, dual-density stretch zones, stabilizing ribs, and internal dimpling, the X-O cap offers a sleek and secure fit.

- Exo-Core Technology: Combining two durometers of silicone for maximum performance
- Internal dimpling and stabilizing ribs prevent movement, wrinkling and keeps the cap in place
- Hydrodynamic 3D shape
- Works in conjunction with our performance Compression Cap to improve the hydrodynamic shape of the head
- Performance cut
- Designed in Italy

RACE CAP

The Race Cap is a 100% silicone dome cap that provides a streamlined, competitive fit.



Black/Silver
SA123113



Blue/Black
SA123112



White/Navy
SA123114



Black/Yellow
SA123111



Black
SA123116

COMPRESSION CAP

- Shapes hair to improve the hydrodynamic form of the head and reduce drag
- Made of ultra-flat, feather weight fabric for ultimate comfort
- Silicone grips keep the cap in place



Small/Medium
SA121111



Large
SA121112



Designed to wear under
X-O Competition Cap



Neon **Small** ST143111
Neon **Regular** ST143112
Neon **Large** ST143113

STRENGTH PADDLE

ENHANCED FEEL

ERGONOMIC

FULLY ADJUSTABLE

POM - *Rigid Thermoplastic*

TPR - *Thermoplastic rubber straps*

AVAILABLE IN 3 SIZES
(Small, Medium, Large)

BUILD STRENGTH AND MAINTAIN FEEL

Developed in Partnership
with Michael Phelps
and Coach Bob Bowman

"The Strength Paddles are one of my favorite tools that we've developed, because they basically give you the feel of the hand and the way it is when it's swimming because of the raised portion under the palm of your hand. It's not a flat surface. You're actually in a much more natural position."
- Coach Bob Bowman

The Strength Paddle is a high-performance resistance tool that provides a natural feel of the water thanks to its shape and raised palm supports.

- Bones structure mimics natural hand position
- Vents and palm risers enhance feel for the water
- Ergonomic wrist strap and finger loop are fully adjustable, durable and streamlined
- Available in 3 sizes

TECHNIQUE PADDLE

VERTICAL ARM TECHNIQUE

Structural design promotes proper vertical forearm technique

ALTERNATIVE HAND POSITIONS

Closed and Open Hand Positions

NATURAL FEEL OF WATER

Vent holes provide a natural feel of the water

PADDLE MADE OF RIGID PP

PP - Polypropylene

SILICONE TUBE STRAPS

IMPROVE TECHNIQUE AND STROKE MECHANICS

Developed in Partnership
with Michael Phelps
and Coach Bob Bowman

"The MP Technique Paddle ensures
- more than any other paddle -
that my swimmers strictly focus on
technique and stroke mechanics."
- Coach Bob Bowman



Technique **Regular** ST132111

- Design prevents swimmer from bending at the wrist & dropping the elbow
- Structural design promotes proper vertical forearm technique
- Vent holes provide a natural feel of the water
- Design provides alternative hand positions (closed or open)

Our inventive Technique Paddle is your new training must-have. The Paddle helps to improve your pulling technique (wrist, forearm, and elbow alignment), with its easy-to-use, Coach Bowman-inspired design and innovative, natural shape.



FOCUS SWIM SNORKEL

UNIQUE, LOW-PROFILE
Triangle hydrodynamic shape

HEAD BRACKET
Lightweight Integrated head cushion

COMFO- BITE MOUTH PIECE
Minimize jaw fatigue

ONE-WAY PURGE VALVE
Maximize clearing of excess water

AVAILABLE IN
Regular and Small Fit

FOCUS YOUR SWIM

Developed in Partnership
with Michael Phelps
and Coach Bob Bowman

SMALL FIT

FOR YOUTH SMALL ADULTS
Height, Mouthpiece and Tube Area :
About 10% smaller



REGULAR FIT
Black/Neon
ST139111



REGULAR FIT
Blue/White
ST139112



REGULAR FIT
Coral/Neon
301658



SMALL FIT
Purple/White
ST139116



SMALL FIT
Blue/Black
253572



SMALL FIT
Neon/Black
ST139114

The Focus swim training snorkel features a unique, low-profile design that has been engineered for maximum comfort and durability, allowing the swimmer to focus solely on technique and proper body position by eliminating breathing motion.

- Unique, low-profile, hydrodynamic tube reduces drag and eases breathing
- Increases cardiovascular strength and lung capacity
- Adjustable lightweight head bracket with integrated cushion ensures comfortable fit
- Silicone Comfo-Bite mouthpiece minimizes jaw fatigue
- One-way purge valve positioned to maximize clearing of excess water
- Triangular tube shape inhibits side-to-side rotation
- Offered in regular fit and small fit

ALPHA PRO FIN**ASYMMETRICAL DESIGN***Allows for a natural kicking motion***70% LIGHTER***Lighter than traditional rubber swim fins, providing comfort and improved body positioning***SHORT BLADE***Mimics race pace kicking tempo***RIGID EVA FOAM***Construction ensures enhanced propulsion***BUILD SPEED AND
IMPROVE POSITION**

Developed in Partnership
with Michael Phelps
and Coach Bob Bowman



XXS	ST142118
XS	ST142119
SM	ST142121
MD	ST142122
LG	ST142123
XL	ST142124
XXL	ST142125



- Asymmetrical design provides natural kicking motion
- 70% lighter than traditional rubber swim fins, providing comfort and improved body positioning
- Short blade mimics race pace kicking tempo
- Rigid EVA foam construction ensures enhanced propulsion

Alpha Pro Fins are 70% lighter than the traditional swim fins and designed to mimic a swimmer's natural competitive kicking tempo with an asymmetrical short blade design.



NAVY / NEON
SA124112

TEAM BACK PACK

The MP Team Backpack is designed to carry all the swim gear you need.

- Diamond ripstop 420D polyester shell
- Extendable main compartment
- Internal laptop sleeve and organization pockets
- Easy access front pocket
- Separate bottom shoe compartment
- Concealed rain cover
- "Stuff-it" compression flap
- Concealed mesh waist strap with zipper pockets
- Ultra lightweight shoulder straps
- Air flow back pads
- Side water bottle pockets
- Sternum strap with whistle buckle



NAVY / NEON
CL169111

TOWEL

Soft & full-sized, the MP logo towel goes great with the rest of your MP swim kit

- 100% Terry Cotton
- Jacquard woven logo
- Reverse color on front and backside
- Size: 140 x 70cm (55 x 27")

GEAR BAG

Engineered with water-draining and quick-drying mesh, the MP Deck Bag helps you to easily carry your training gear to and from the pool. An interior pocket keeps your goggles and valuables secure.

- XL size: 22" x 30" (55cm x 76cm)
- Mesh construction for water drainage
- Quick drying
- Drawstring closure keeps equipment secure
- Interior pocket for goggles & accessories
- 2 heavy duty straps allow for easy handling and hanging



NEON / NAVY
ST138112



BLACK / BLACK
ST138111



GET ORGANIZED

JOIN THE TEAM

FOLLOW THE MP BRAND



#WeAreMP



FOLLOW



@mpmichaelhelps



mp_michaelhelps



mpmichaelhelps



@mpmichaelhelps

2019 INTERNATIONAL BUYERS GUIDE

DISTRIBUTION

AQUA LUNG USA
2340 Cousteau Ct.
Vista, CA 92081
Tel: 1-760-597-5000
Fax: 1-760-596-4914
asorders@aqualung.com

AQUA LUNG AUSTRALIA
Australia - New Zealand
8 Weddel Court, Unit 2
Laverton North, Victoria
3026 Australia
Tel: (61) 3 9369 1992
Fax: (61) 3 9907 5999
salesaqz@aqualung.

AQUA LUNG CANADA
6820 Kirkpatrick Crescent
Saanichton B.C.,
Canada V8M 1Z9
Tel: 1-250-652-5881
dashford@aqualung.com



www.michaelphelps.com
2019 SS #QR911475

