



ELITE MODULAR
HOMES

IRELANDS MOST **COST EFFECTIVE** **HOMES**

Elite Modular Homes are rapid build homes (off site construction homes) We specialize in new build homes, extensions and garden design homes.

www.elitemodularhomes.com

+353 870357913

Our Service

At Elite Modular Homes, we don't just build — we redefine modern living. Our precision-engineered steel frame homes deliver luxury, durability, and energy efficiency for a lifetime.



PREMIUM DESIGN

We are not cabins, pods, or sheds that fade after a decade — our homes are crafted to endure for generations.



AFFORDABLE LUXURY

Experience up to 60% cost savings compared to traditional builds — with no compromise on quality or design.



RAPID DELIVERY

From order to installation, your luxury modular home can be fully delivered in as little as 90 days.



scan the QR code and see for yourself.

WHY CHOOSE US



Built to Last

Our steel frame structures are engineered for strength, stability, and longevity, exceeding industry standards.



Sustainable Living

We design every home to be eco-conscious and energy-efficient, minimizing your carbon footprint.



Fast Turnaround

We streamline production to deliver move-in-ready homes quickly — without sacrificing craftsmanship.



Unmatched Value

Enjoy modern luxury, innovative design, and superior comfort at a fraction of conventional costs.



Integrity in construction is our foundation — combining sustainability, precision, and innovation for homes built to last a lifetime.





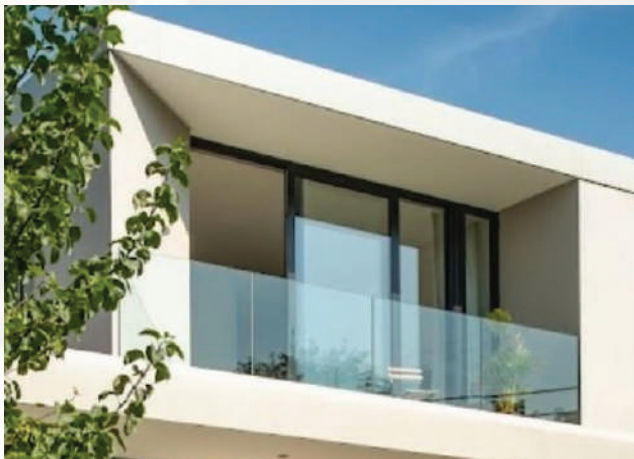
Our Expert Team Member

At Elite Modular Homes, our expert team brings over

50 years of combined experience in the construction industry.

Each member of our crew is dedicated to redefining the future of modern living through precision, quality, and innovation.

We take pride in our craftsmanship and commitment to excellence, ensuring every modular home we build meets the highest standards of safety, durability, and design.



Our History

Pioneering Construction Methods

Elite Modular Homes was founded with a vision to revolutionize the way homes are built in Ireland and beyond.

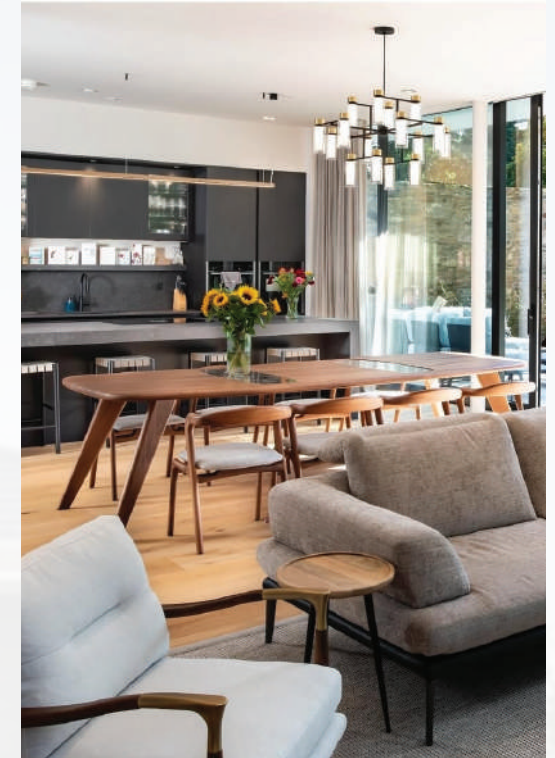
Our Mission

Our mission is to combine cutting-edge engineering with sustainable design to deliver homes that are both beautiful and built to last.

Our rapid build modular systems are crafted using high-performance steel frames that are CU rated and exceed all building regulations. Designed for longevity, our homes offer a lifespan that rivals traditional builds—at a fraction of the time.



We don't just build houses — **we create long-lasting, energy-efficient homes** that stand as a testament to quality and innovation.





Did you know?

The cost of building a traditional house in Ireland has risen **by 27%** in just the last 18 months — and continues to climb.

At Elite Modular Homes, we offer a smarter alternative — delivering luxury, A-rated modular homes up to

60%

cheaper than conventional builds, and handing you the keys to your dream home in just a few short weeks.

Our **factory-built process** ensures consistent quality, faster turnaround, and zero on-site stress.

Production takes approximately **50–60 days**, with a **7–21 day installation** (depending on home size).

We're proud to combine **industry expertise, engineering precision**, and **customer care** to create homes that redefine comfort and sustainability for modern living.



At Elite Modular Homes, our focus is simple — to save you **time, money, and stress, while delivering a home built for a lifetime.**



Unlike timber or concrete builds, **our steel frame homes are engineered for endurance** — a home built today that stands strong for decades to come.



Did you know?

Steel frame homes are often considered better built due to their superior strength and precision, especially in the structural framing of a house.

At Elite Modular Homes, we've embraced this innovative approach to construction to deliver homes that redefine durability and performance.

Strength & Durability

Steel offers an excellent strength-to-weight ratio, providing superior stability and reliability compared to timber or concrete structures.

Most new homes in Ireland feature concrete walls, but their frames are made of timber, which has limited load-bearing capacity when compared to steel.

Why Steel Over Traditional Materials

Timber

is durable but weakens over time and cannot support heavy structural loads.

Concrete

is strong yet prone to cracking and flaking as it ages.

Steel

by contrast, maintains its shape, integrity, and precision for decades.

Our Edge

At Elite Modular Homes, we use galvanised steel, which provides outstanding protection against moisture, corrosion, and environmental wear.

This ensures every home we deliver offers exceptional longevity and value — redefining what “built to last” truly means.



Description

Our modular homes are built to overcome the common weaknesses found in traditional construction methods.

- **Resistant to termites, mold, and mildew**
- **Protected against wood rot and warping**
- **Unaffected by moisture or temperature changes**

Every Elite Modular home is a blend of engineering precision, sustainability, and design excellence, resulting in modern spaces that are both strong and energy-efficient.



Our Structural Advantage

At Elite Modular Homes, we believe that the foundation of a great home lies in the materials that shape it. •

Our galvanised steel frame system delivers the perfect balance of durability, flexibility, and design freedom — outperforming traditional methods in every way.



Performance **You Can Rely On**

- **Resistant to moisture and corrosion**
- **Free from cracks, flaking, and deformation**
- **Immune to termites, mold, and rot**
- **Built for long-term strength and stability**

Building **for the Future**

The majority of Irish homes are still built using concrete and timber, but the future belongs to steel. As costs of traditional building materials continue to rise, more homeowners are turning to Elite Modular Homes — a smarter, stronger, and more sustainable choice. Steel framing represents the next step in construction evolution — precise, efficient, and environmentally responsible. With Elite Modular Homes, you're not just building a house — you're investing in lasting quality and innovation.

