

Silvia Waltner Fine Art Services Annual European Watercolor Salon





George Louis Claude

Georges Louis Claude was born in Paris in 1879. The artist first studied at the Bernard Palissy School of Drawing in Paris. There, he learned mythological and religious subjects, the art of portraiture, still life, and, of course, wall decoration, which became his favourite medium. His career began as an architectural decorator for the Galland house in Paris. He had success at the 1900 Universal Exhibition and decided to emancipate himself and present his own projects.

Georges-Louis Claude seduced some of the most influential personalities of his time with his talent. First, King Leopold II of Belgium, followed immediately by Baron Empain, who became infatuated with the artist and decorated several palaces in Belgium, such as the Royal Palace of Laeken (Japanese Tower and Chinese Pavilion). Baron Empain also took him to Egypt, where he decorated Heliopolis and the Palace Hotel, the current seat of the Egyptian presidency.

Unfortunately, the war put a stop to his meteoric rise. In 1917, back from the front, wounded, his new projects would be closer to home. He decorated, among other things, the chapel of the dead in the Saint François-Xavier church in Paris and Gambetta's urn in the Pantheon. These worksites made him rediscover the art of stained glass, which became one of his favourite media.

Finally, he successfully tried his hand at ceramics. Sèvres was one of his main clients, responsible for numerous models and decorations. He received state orders and was awarded the grand prize for ceramics at the French Exhibition in Cairo in 1929. Thereafter, he never stopped drawing and painting. He settled in Brittany in the Vannes region, then in Provence, and finally, permanently, in the Paris region.

George Louis- Claude (French, 1879- 1963)

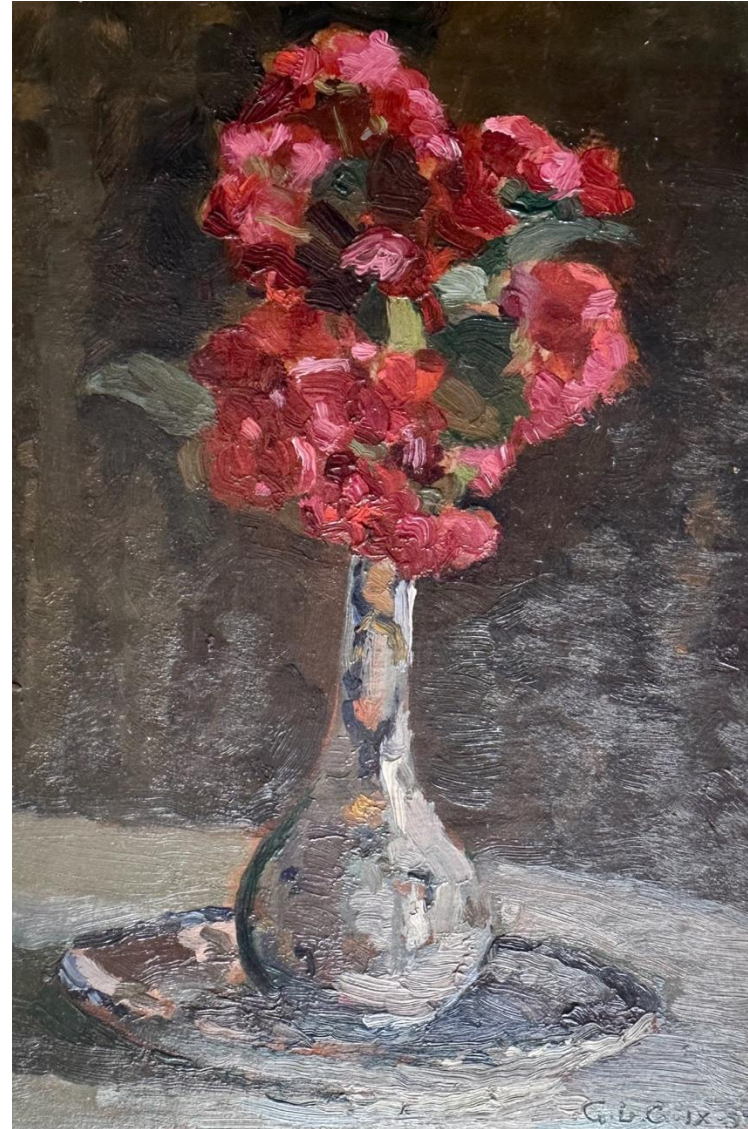
Vase of Roses, ca. 1932

Signed lower right

Oil on paper

9 x 6 1/8 in.

Price: \$1,200





George Louis Claude (French 1879-1963)

Daisies, 1918

Signed, dated, and inscribed lower left

Watercolor on paper

12 3/4 x 10 in.

Price: \$1,200 (sold)



Adolphe Lalauze

Adolphe Lalauze was born in the Loire region on 8 October 1838. He worked in a civil service job in Toulouse for some time but eventually enrolled at the Toulouse École des Beaux-arts. Later, he moved to Paris and became a student of Leon Gaucherel, who encouraged him to exhibit at the Salon of 1872. He was best known for his etchings of children. He received several awards in salons and Universal Exhibitions between 1876 and 1900.



Adolphe Lalauze (French 1838-1906)

Untitled, *Young Girls on a Swing*, ca.
1890)

Watercolor on paper

11 ¼ x 7 ⅓ in.

Price: \$1,000

Marie-Désiré Bourgoïn

French painter and composer, who worked mostly in watercolors and was a student of Jean Baptiste Fortune de Fournier.

Sarah Bernhardt's Studio and *Alphonse de Neuville dans son Atelier* are two of his most well-known works.



Marie-Désiré Bourgoin (French, 1839- 1912)

Untitled – *Woman Tending a
Farm*, ca. 1900

Signed lower right

Watercolor on paper

7n ½ x 11 in.

Price: \$900

(Sold)



Charles Bétout

French painter and watercolorist who was the principal costume designer for the Comédie-Française from 1919 till his death in 1939. He known for this diligent historical research and his costumes were in high demand for operatic productions, especially period works.



Charles Bétout (French, 1869- 1945)

Le Jardin de Bagatelle, Paris
ca. 1920

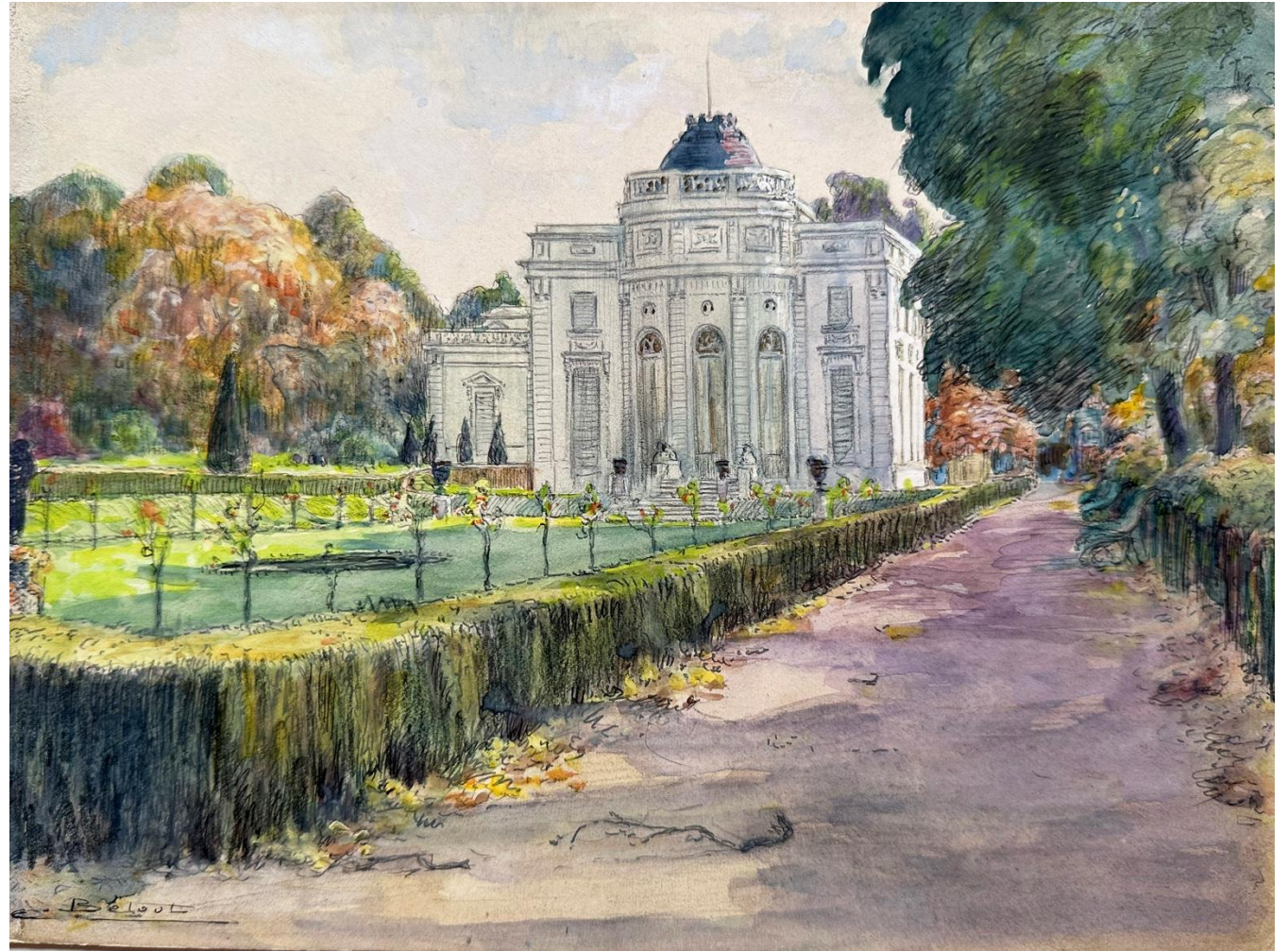
Signed lower left

Watercolor, ink, and
gouache on paper

7 x 9 3/8 in.

The chateau in the Bagatelle
Parc was Marie Antoinette's
venue of choice for her
parties.

Price: \$1,200



Charles Bétout (French, 1869-1945)

Le Chateau Bagatelle, ca. 1920

Signed lower left

Watercolor, ink, and gouache on paper

9 ½ x 13 in.

The Bagatelle Parc was Marie Antoinette's venue of choice for her parties.

Price: \$1,400 (Sold)



Charles Bétout (French, 1869- 1945)

*Le Château de Malmaison, ca.
1920*

Signed lower right

Watercolor, ink, and gouache on
paper

7 ¼ x 10 ¼ in.

Price: \$1,200



Charles Bétout (French, 1869- 1945)

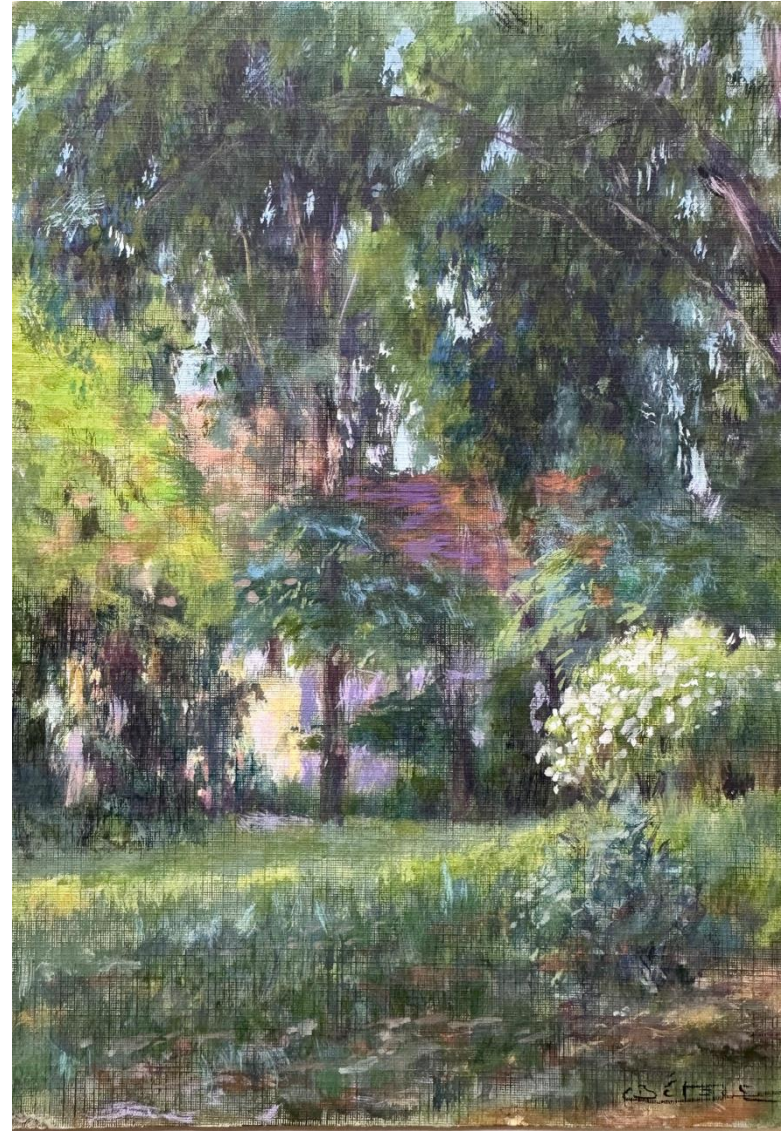
Maison à Courbevoie (a
suburb of Paris), ca. 1920

Signed lower right

Watercolor and gouache on
paper

8 ¾ x 6 in.

Price: \$1,200



Charles Bétout (French, 1869- 1945)

Ile de la Jatte, ca. 1920

Signed lower left

Watercolor, ink, and gouache
on paper

8 5/8 x 10 5/8 in.

La Jatte is an island in the
Seine, famously depicted by
Georges Seurat in several
works.

Price: \$1,200 (sold)



Albert Coste (France, 1895-1985)

Albert Coste was a French painter born in Marseille in 1895. His mother, a classical pianist, introduced him to music, where he attended the Marseille Conservatory as a cellist. In 1909, he attended the Beaux Arts school in Marseille while continuing his musical studies. A tram accident in 1916 caused the amputation of his index and middle fingers of his left hand, ending his musical career. From then on, he devoted himself to painting and continued his studies in Paris in the studio of Fernand Cormon. He participated in numerous group exhibitions and in Salons in Paris, and in Aix-en-Provence, where he met Maurice Denis and frequented his studio. In 1922, he settled around Aix while continuing to participate in the major exhibitions in Paris (Indépendants, Réalités Nouvelles, Salon d'Automne, etc.). In 1933, in Aix-en-Provence, he had his first solo exhibition, presented by Maurice Denis. I

In 1935, he was appointed professor at the School of Fine Arts in Aix-en-Provence. In 1941-42, he met the important cubist artist and theorist, Albert Gleizes, in Saint Rémy de Provence and remained deeply linked to him until his death. Gleizes arranged an exhibition of Coste's works in 1942 in Aix. In 1953, he participated in a collective exhibition with compositions inspired by Gleizes, reflecting the spirit of post-war French abstraction, alongside Roger Bissière, Alfred Manessier, Charles Lapicque, and others. Works by Coste are featured in several museums in France.



Albert Coste

Untitled, ca. 1930-1950

Signed with initials lower right

Watercolor, chalk, and graphite
on paper

5 1/8 x 6 7/8in.

Price: \$900



Albert Coste

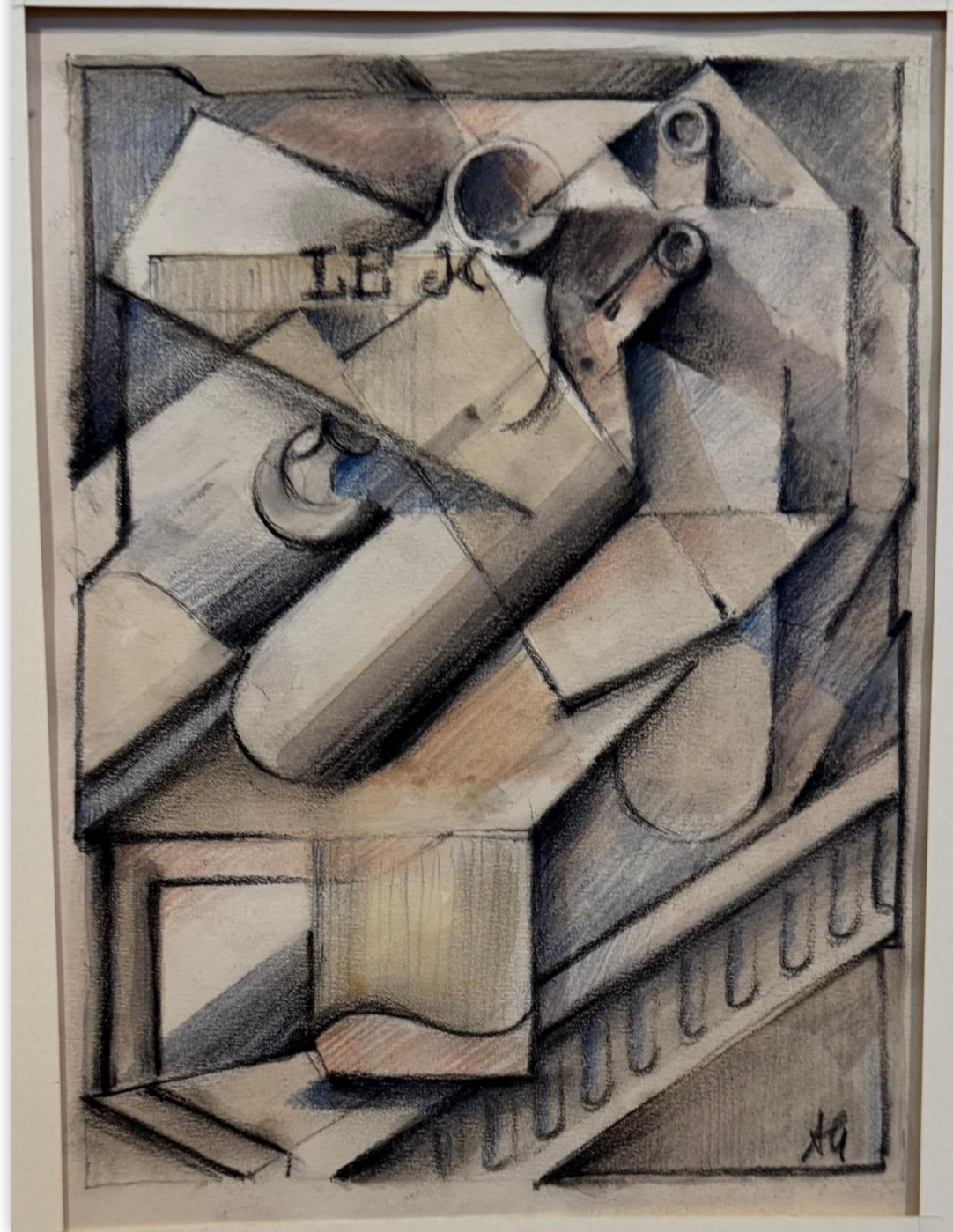
Untitled, ca. 1930-1950

Signed with initials lower right

Watercolor, chalk, and graphite on paper

7 x 5 3/8 in.

Price: \$900



Albert Coste

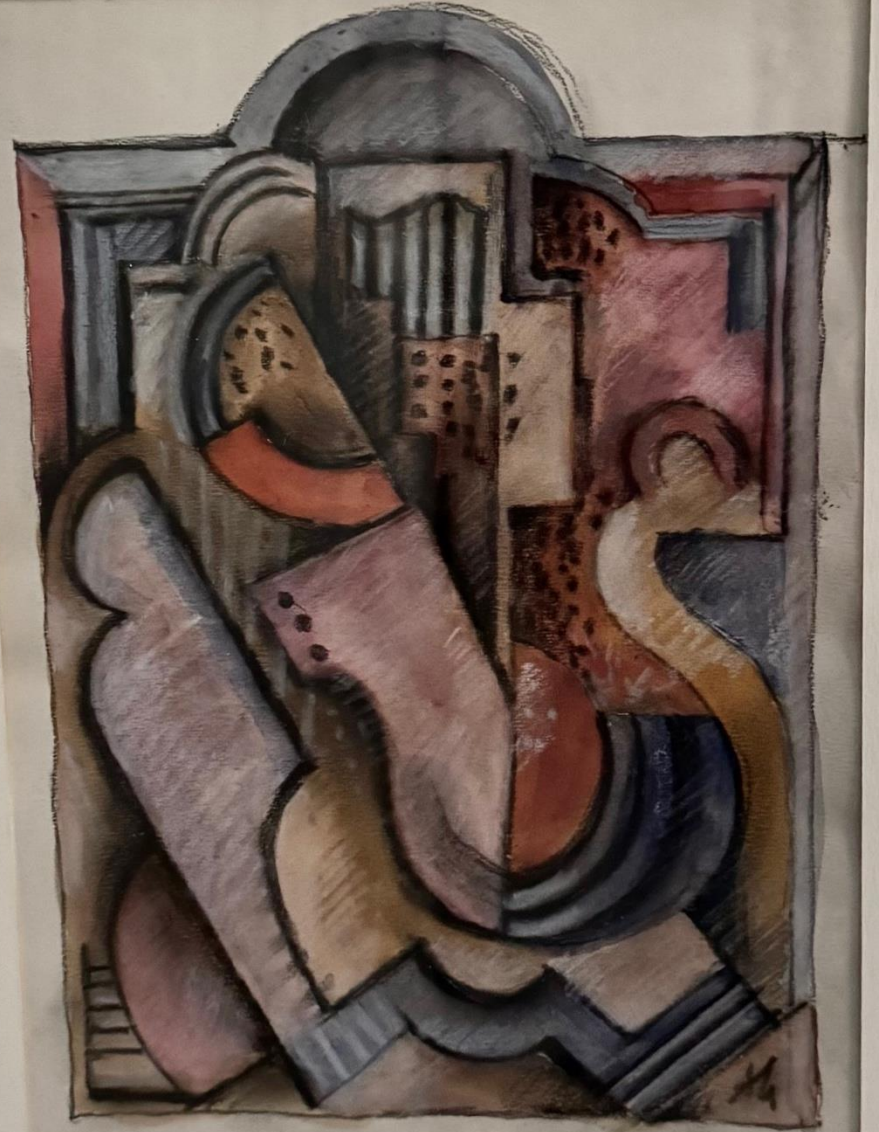
Untitled, ca. 1930-1950

Signed with initials lower right

Watercolor, chalk, and graphite on paper

7 3/8 x 5 in.

Price: \$900



Albert COSTE
1895-1985
Aquarelle

Albert Coste

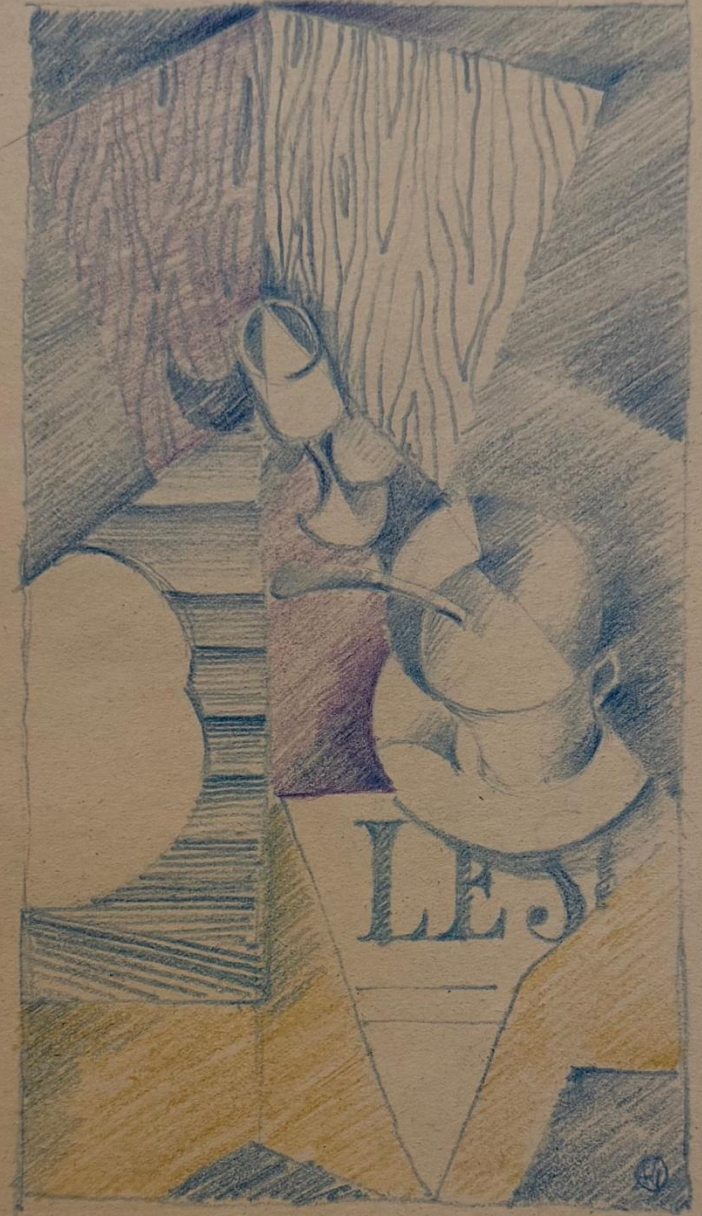
Untitled, ca. 1930-1950

Signed with initials lower right

Colored pencil and crayon on paper

7 1/8 x 4 in.

Price: \$800



Jan Darna (France 1901-1974)

Darna was a French abstract artist who studied with the sculptor Antoine Bourdelle and was a professor at the Grand Chaumiere in Paris until 1938. He painted throughout his entire life, mostly varying between cubism and expressionism.



Jan Darna

Untitled, ca. 1945-50

Ink and watercolor on paper

Bearing the atelier stamp on the reverse

10 5/8 x 8 1/8in.

Price: \$500



Jan DARNA 1901-1974

École de Beaudelle, Beaudelle, France

Harry E. James

British Impressionist and Modern artist known for his landscapes. He participated in various exhibitions including The London Salon of the Allied Artist's Association in 1909 held at the Royal Albert Hall.



**Harry E.
James
(English,
active 1880-
1902)**

A Garden in Bath, ca 1900-

Signed lower right

Watercolor on paper

10 7/8 x 18 in.

Price: \$1,500





Leon Masson (French, 1911- 1984)

Untitled – *Woman Surrounded
by Roses*, ca 1930's

Engraving, 6 of 16

15 1/8 x 11 3/4 in.

Price: \$700

Pierre Reynaud

Little is known of Pierre Reynaud, but it's clear that he was underrated given the standard of his works. All we do know is that he hailed from Belgium and lived in Le Coteau, which is close to Roanne. It appears that he worked alongside other Belgians in that area.



Pierre Reynaud (Belgium, 1881-1943)

Untitled *Landscape*, 1912

Watercolor on paper

8 ¼ x 10 5/8 in.

Price: \$600



Pierre Reynaud (Belgium, 1881- 1943)

Untitled, 1911

Signed and dated lower right

Watercolor on paper

8 7/8 x 11 in.

Price: \$600



Pierre Reynaud (Belgium, 1881- 1943)

Untitled, *Autumn Landscape*, 1912

Signed and dated lower right

Watercolor on paper

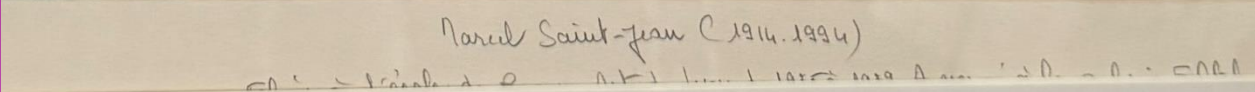
8 5/8 x 9 3/4 in.

Price: \$600



Marcel Saint-Jean

Saint-Jean studied at the École Nationale Supérieure des Beaux-Arts de Lyon. He concentrated primarily on landscapes of the Lyonnais mountains, where he grew up. He also depicted the urban landscape of Lyon, the Quays of the Saone, and the slopes of Fourviere. His work is in the collections of the Paul Dimi Museum of Villefranche and the Musée des Beaux-Arts in Lyon. In 2000, he was honored with a retrospective exhibition at the Maison Ravier in Morestel, France.



Price: \$750 (On hold)

Norval Saint-Jean (1914-1994)

$\Rightarrow \text{A}^T = \text{Inverse of } \text{A} \quad \text{A}^{-1} = \frac{1}{|\text{A}|} \text{adj A} \quad \text{A}^{-1} = \frac{1}{|\text{A}|} \text{adj A}$

Pierre Thévenin

Pierre Thévenin, born into a family of musicians, was a gifted cellist in addition to being a noted painter. He studied art at the School of Fine Arts in Lyons and first exhibited his paintings in the Salon du Sud-Est in 1928. At this period in his life, he painted in his studio in the town of Mougins on the Côte d'Azur and his paintings were strongly influenced by the warm Mediterranean climate, the brilliant light, and the exotic vegetation of the south of France, all of which are reflected in the warm and startling colors of his landscapes and portraits. He was strongly influenced by the works of both Derain and Matisse.



Pierre Thévenin (French, 1905-1950)

Untitled

Signed lower right

Watercolor on paper

9 1/8 x 12 1/4 in.

Price: \$1,100 (Sold)

