

3D Walkthrough



Bellhaven

Offering plenty of stunning features, the Bellhaven plan showcases a welcoming entry that leads into easy single story living. The inviting foyer opens into the expansive great room with vaulted ceiling, bright flex space and gas fireplaced living room.

Towards the other side of the home you'll find the well-designed gourmet kitchen equipped with a large center island, breakfast bar, plenty of counter and cabinet space, and generous sized pantry closet. Adjacent to the kitchen is the dining area, offering direct access to the outdoor patio space.

The private and elegant primary bedroom suite is complete with tray ceiling and deluxe primary bath with dual-sink vanity, luxe tiled shower and expansive double-u shaped walk-in closet.

Secondary bedrooms, on the other side of the home, feature roomy closets and a shared bath. Additional highlights include a centrally located laundry, sidewalk to front porch and 2 car attached garage.

Starting at **\$815,900**

One-Story Residence

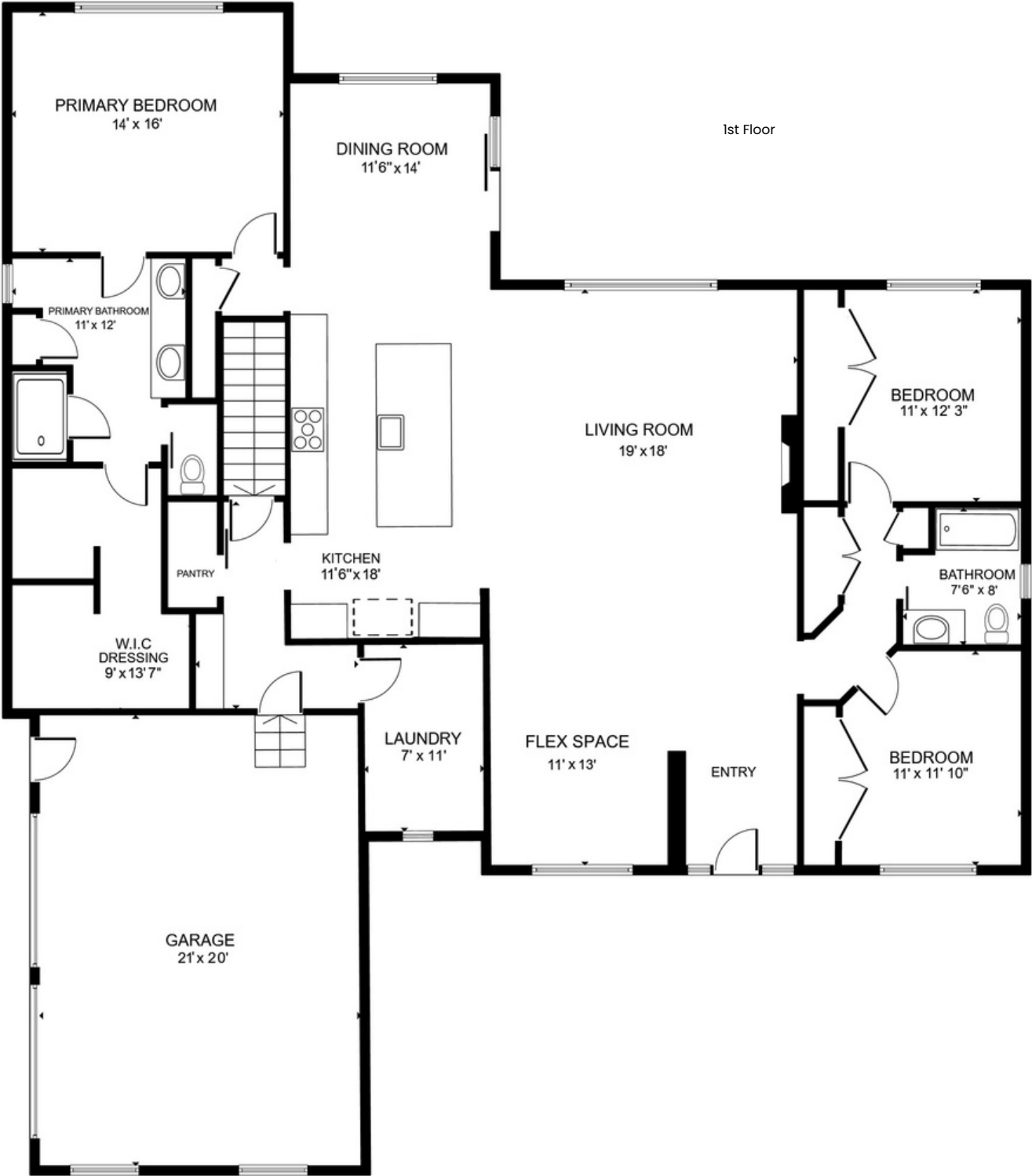
3	2	2,200
bedrooms	full baths	square feet
1	0	2
story	half bath	garages

Home Highlights:

- Single Level for Easy Living
- Charming Covered Front Porch
- Light and Bright Entry Way
- Stunning Vaulted Fireplaced Living Room
- Flex Space off Main Living Area for Formal Sitting, Office or Extra Dining Space
- Kitchen with Large Island Open to Living Room & Dinette
- Pantry Closet
- Convenient Laundry Room
- En-suite Primary Bathroom with Dual Sink Vanity, Tiled Shower, and Oversized Walk-in Closet

View 3D Tour & Interior Pictures Online at WhisperingOaksCT.com

Bellhaven



SIZES AND DIMENSIONS ARE APPROXIMATE. ACTUAL MAY VARY.