

MODEL



Glenville II

The foyer of this home showcases a grand view of the striking gas fireplaced living room. Also adjacent to the foyer is an open formal dining space that can accommodate an expansion table for larger gatherings.

The open fireplaced family room and kitchen area provide direct access to the patio off the dinette. The kitchen includes a large center island and corner pantry. The first level also features a private office, which can be used as a guest room, if needed.

The secluded primary suite is highlighted by a tray ceiling, two walk-in closets and deluxe primary bath with dual-sink vanity, linen storage and private water closet. The three additional bedrooms feature sizeable closets and share a hall bath with dual-sink vanity.

This home also features an upstairs laundry, convenient main level powder room, and mudroom with Deacon's bench and access to the 3 car garage.

Starting at **\$779,900**

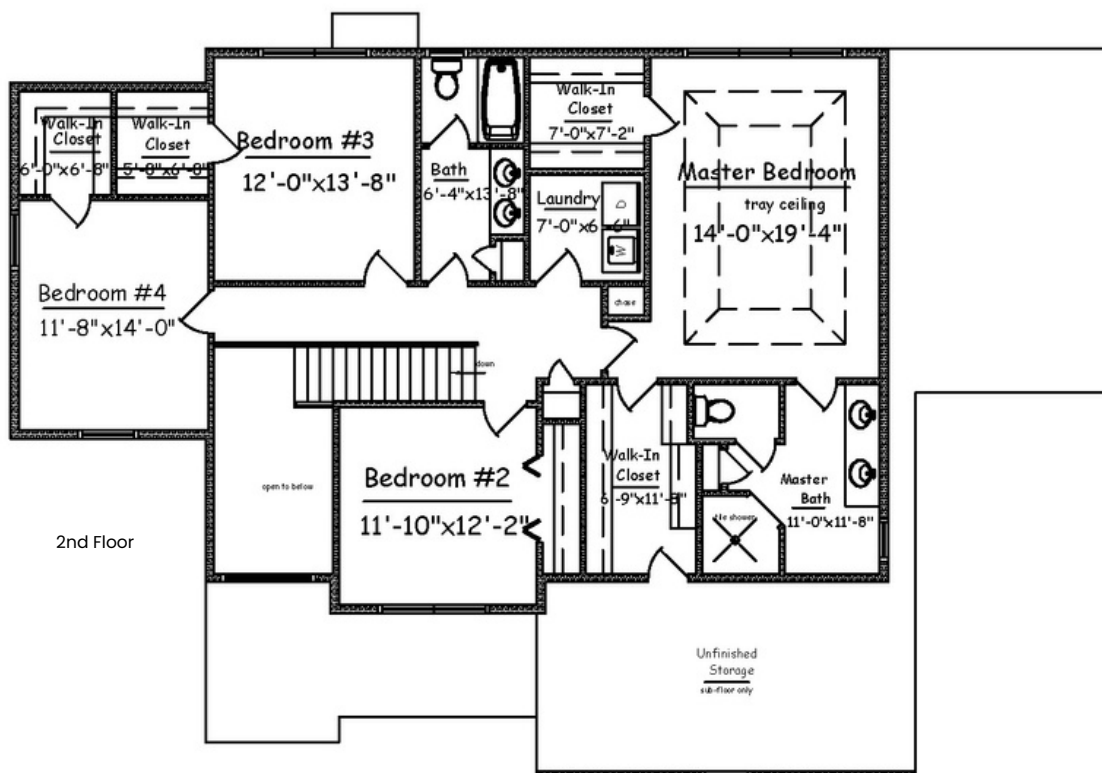
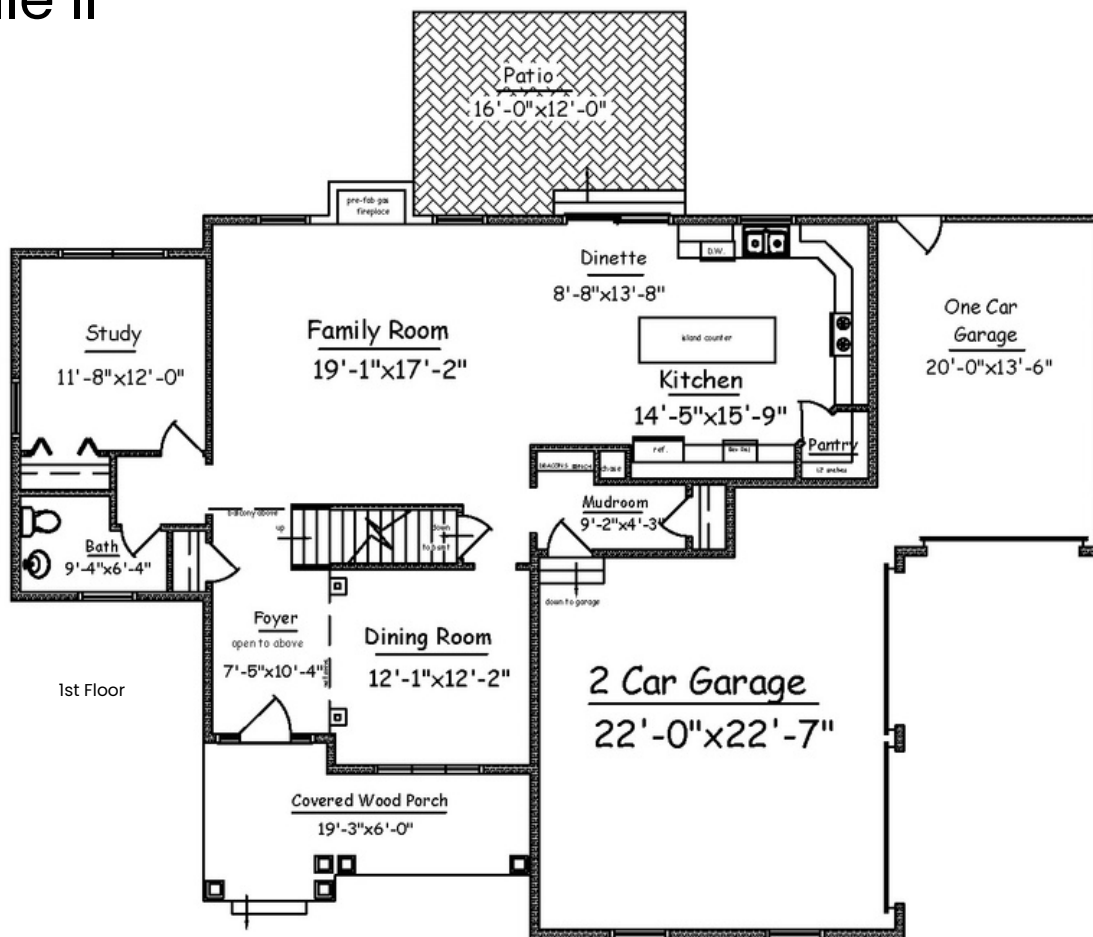
Two-Story Residence

4	2	2,618
bedrooms	full baths	square feet
2	1	3
story	half bath	garages

Home Highlights:

- Covered 6' x 19' Front Porch that Leads to a 2-story Foyer
- Open Formal Dining Area off Foyer
- Office that can Double as a Guest Room
- Family Room with Gas Fireplace
- Access to Patio off Dinette
- **Multiple** Closets in Primary Suite
- En-suite Private Bathroom with Dual-sink Vanity, Tiled Shower & Private Water Closet
- Convenient Powder Room
- Mudroom with Deacon's Bench
- Upstairs Laundry
- 12' x 16' Patio

Glenville II



SIZES AND DIMENSIONS ARE APPROXIMATE. ACTUAL MAY VARY.