



Glenville

The foyer of this home showcases a grand view of the striking gas fireplaced living room. Also adjacent to the foyer is an open formal dining space that can accommodate an expansion table for larger gatherings.

The living room provides direct access to the sunroom to one side and gourmet kitchen to the other, which is complete with a large center island, corner pantry, beverage station and access to the patio.

The secluded primary suite is highlighted by a tray ceiling, enormous walk-in closet with additional closet spaces and storage, and deluxe primary bath with dual-sink vanity, tub, linen storage and private water closet. The three additional bedrooms feature sizeable closets and share a hall bath with dual-sink vanity.

Additional features include an upstairs laundry, convenient main level powder room, and mudroom with access to the 2 car garage.

Starting at **\$797,900**

Two-Story Residence

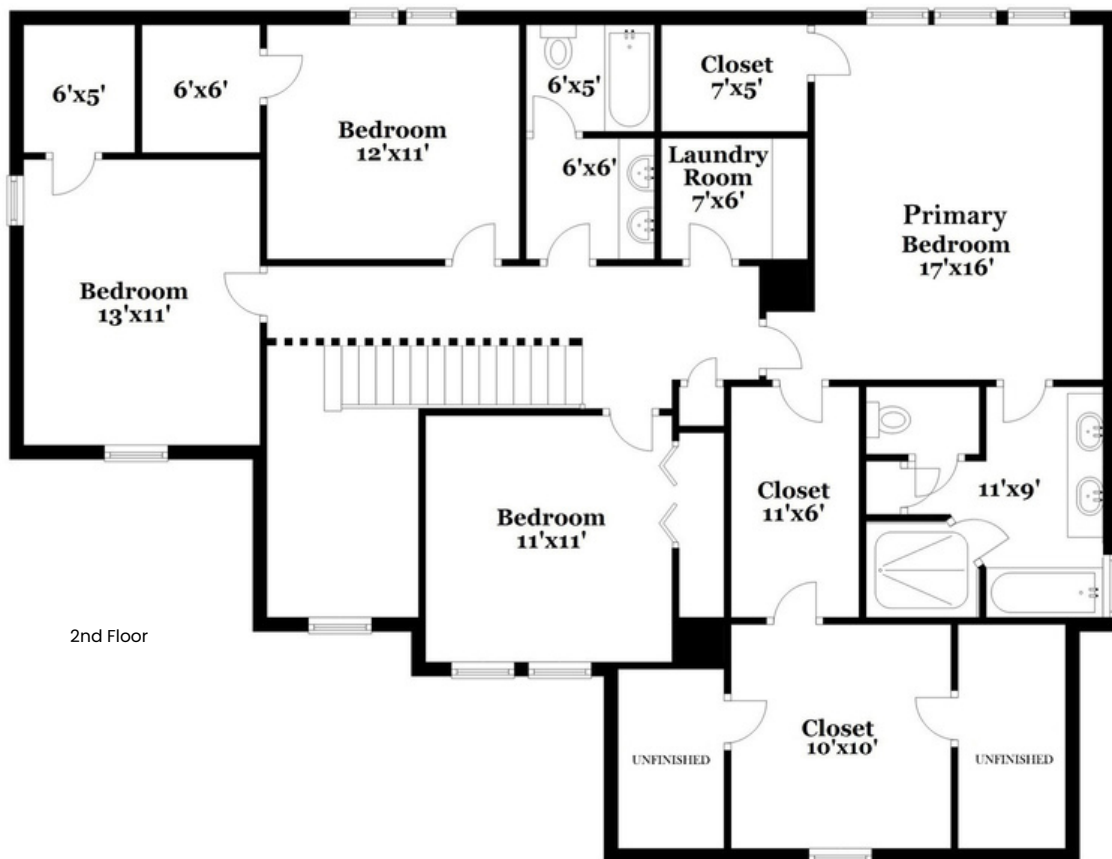
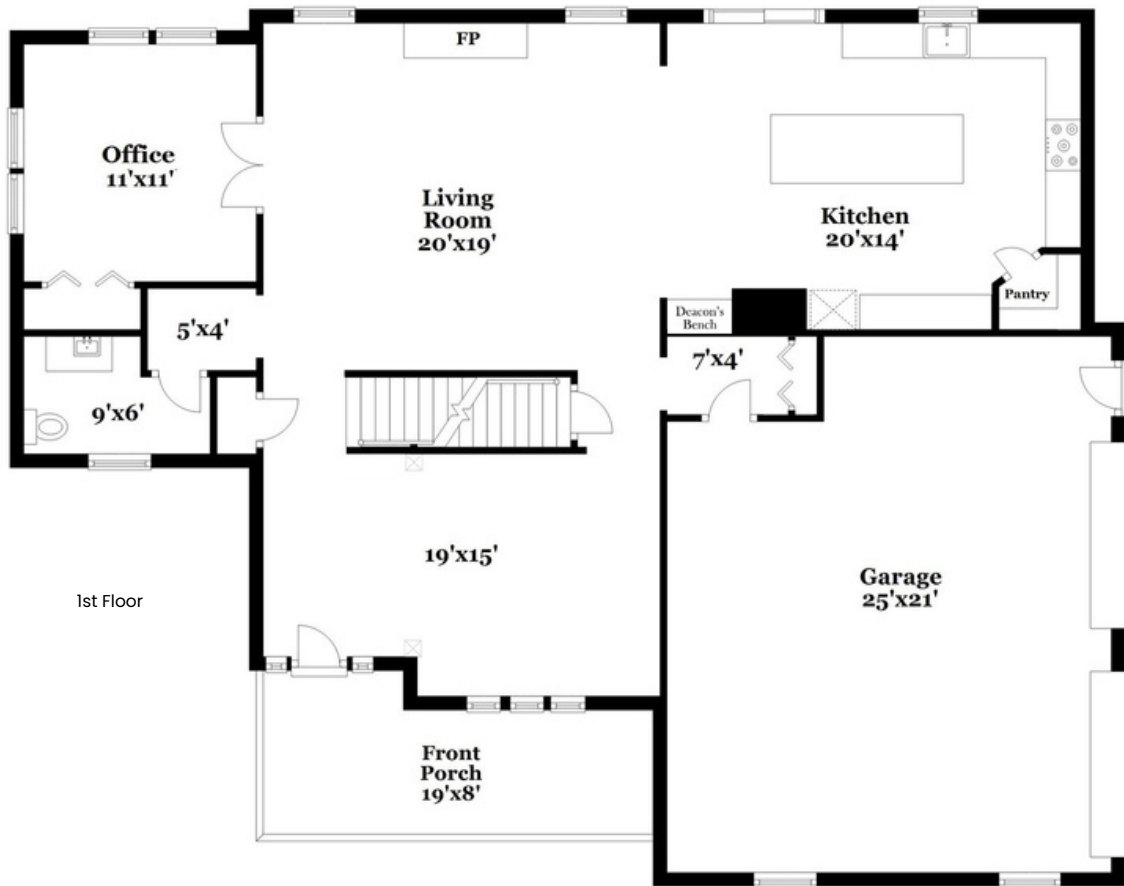
4 bedrooms	2 full baths	2,643 square feet
2 story	1 half bath	2 garages

Home Highlights:

- Covered 6' x 19' Front Porch Leads to a 2-story Foyer
- Open Formal Dining Area off Foyer
- 4 Season Room Doubles as an Office or Guest Room
- Living Room with Gas Fireplace
- Kitchen with Large Island, Pantry, Beverage Station with Beverage Fridge, & Patio Access
- **Multiple** Closets and Storage Space in Expansive Primary Suite
- En-suite Private Bathroom with Dual-sink Vanity, Built-in Soaking Tub, Large Separate Tiled Shower & Private Water Closet
- Convenient Powder Room
- Upstairs Laundry

View Interior Pictures Online at WhisperingOaksCT.com

Glenville



SIZES AND DIMENSIONS ARE APPROXIMATE. ACTUAL MAY VARY.