



## 3D Walkthrough

# Helmsley

Charm and grace abounds in every corner of the Helmsley. With its stunning gambrel entry office and covered patio, this home showcases an incredible welcoming entryway.

Step into the foyer with herringbone design floors, which leads you into the French-doored entry office with stunning custom built-ins, the formal dining space, the staircase to the 2nd level, or straight into the open kitchen, living and informal dining space.

The well equipped kitchen is highlighted by the striking center island, shiplap ceiling, large range, farmers sink, and expansive butlers pantry with plenty of storage, perfectly fit for the entertainer enthusiast or chef.

Open to the informal dining area, the vaulted family room catches your attention with its striking fireplace and an elegant round window. An additional flex space off the kitchen adds a perfect room to tuck toys or dog beds away from the living area.

On the upper level, the primary bedroom suite boasts 2 closets, a dual-sink vanity and free standing soaking tub. The convenient laundry space offers plenty of room to organize a houseful of laundry. And an unfinished bonus space above the garage could be designed into the perfect game room or home theatre.

The home includes an expansive mudroom complete with a custom Deacon's bench and 3 car garage.

Starting at **\$1,245,900**

Two-Story Residence

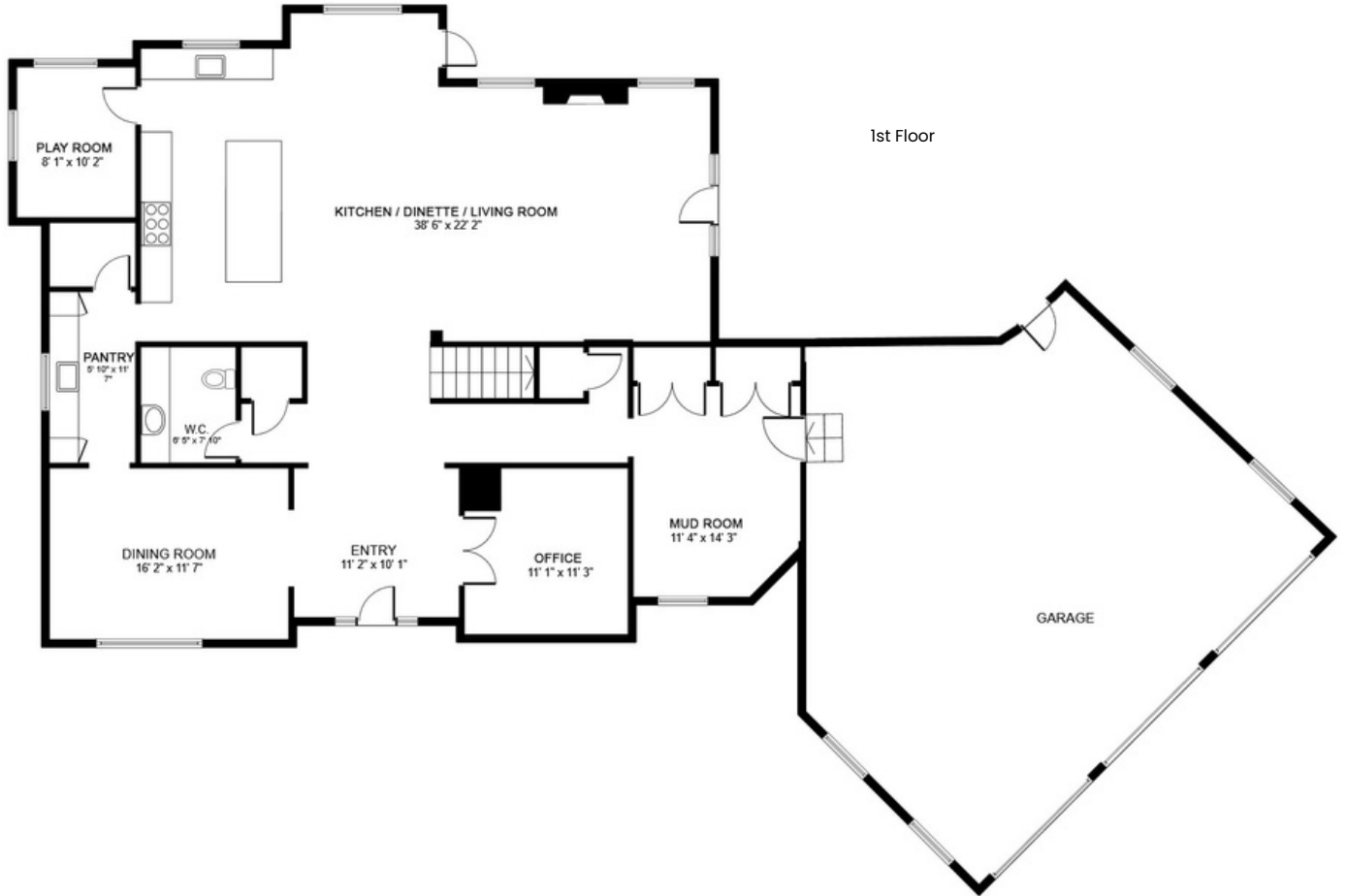
<b>4</b> bedrooms	<b>3</b> full baths	<b>3,628</b> square feet
<b>2</b> story	<b>1</b> half bath	<b>3</b> garages

### Home Highlights:

- Refined Gambrel Dormer Home
- Covered Front Porch Leads to a Herringbone Foyer
- Kitchen with Large Island, Expansive Range, Shiplap Ceiling, Writing Desk, & Butler's Pantry
- Both Casual & Formal Dining Areas
- Access to Patio off Eating Area
- **Vaulted** Fireplaced Great Room with Elegant Round Window & Shiplap Mantel Wall
- Playroom/Flex Space off Kitchen
- French Door Entry into Office with Custom Built-ins
- Primary Bedroom Suite with Separate Closets
- Oversized Mudroom with Large Deacon's Bench & Multiple Closets
- Large Laundry Room
- Option to Finish 512 SF of Bonus Space Above Garage

**View 3D Tour & Interior Pictures Online at [WhisperingOaksCT.com](http://WhisperingOaksCT.com)**

# Helmsley



SIZES AND DIMENSIONS ARE APPROXIMATE. ACTUAL MAY VARY.