



Winstead

The expansive covered front porch leads way to a an attractive double-door entry and foyer. The expansive foyer of this home showcases a view of the charming staircase and is adjacent to a secluded office space with French-door entry and an oversized butler's pantry.

The well-appointed gourmet kitchen boasts a large center island, plenty of cabinets and counter space and opens to the dining area and fireplaced family room.

The gorgeous primary suite is enhanced by a tray ceiling and elegant en-suite bath with a large soaking tub, dual-sink vanity, private wash closet, and expansive walk-in closet.

Additional highlights include a conveniently located powder bath, large mudroom, and centrally located laundry on the second level.

Exterior features include a paver brick walkway-leading up to the large front porch, paver brick patio and 2 car garage with extra storage space.

Starting at **\$837,900**

Two-Story Residence

4 bedrooms	2 full baths	2,630 square feet
2 story	1 half bath	2 garages

Home Highlights:

- Expansive Covered Front Porch
- Large Entry Way
- Additional Storage Pantry with Sink
- Wide Kitchen with Large Island
- **Open** Dining and Living Space with Gas Fireplace
- Private Office off Entry
- Primary Bedroom with Roomy Walk-in Closet
- En-suite Bath with Free-standing Soaking Tub
- 2nd Floor Laundry
- Large Mudroom off Garage with Deacon's Bench
- Garage includes Extra Storage Area
- Black Windows on Front of Home

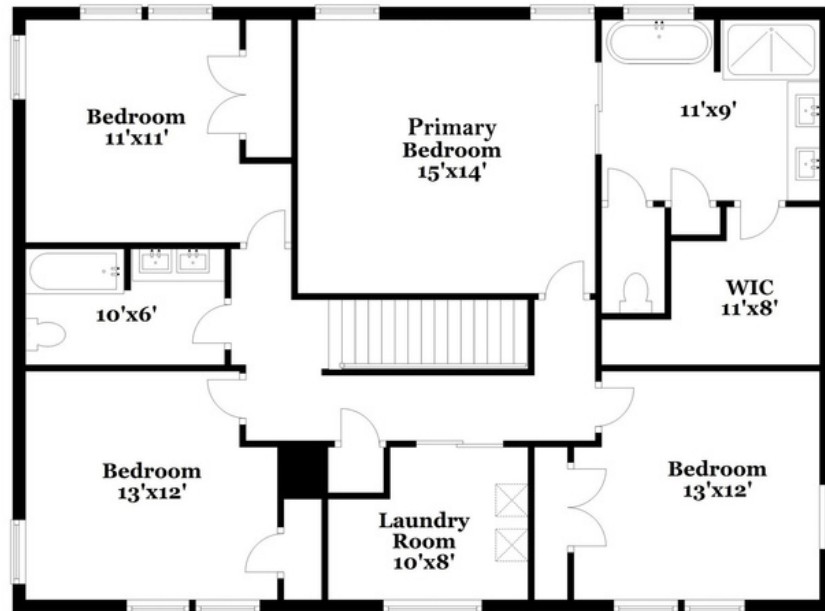
View Interior Pictures Online at WhisperingOaksCT.com

Winstead

1st Floor



2nd Floor



SIZES AND DIMENSIONS ARE APPROXIMATE. ACTUAL MAY VARY.