

## Reference Materials

The following list includes books and articles about the impact of social isolation that may provide support for your community's efforts to fight this epidemic.

***Bowling Alone: The Collapse and Revival of American Community***

by Robert D. Putnam (Simon Schuster: August 7, 2001).

[https://www.amazon.com/Bowling-Alone-Collapse-American-Community/dp/B01N94FW0P/ref=sr\\_1\\_2?dchild=1&keywords=Bowling+Alone&qid=1585919528&s=books&sr=1-2](https://www.amazon.com/Bowling-Alone-Collapse-American-Community/dp/B01N94FW0P/ref=sr_1_2?dchild=1&keywords=Bowling+Alone&qid=1585919528&s=books&sr=1-2)

**“How Social Isolation is Killing Us”**

by Dr. Dhruv Khullar (*New York Times*: December 22, 2016).

<https://www.nytimes.com/2016/12/22/upshot/how-social-isolation-is-killing-us.html>

**“Isolation Nation”**

by Allison Abrams (*Psychology Today*: January 15, 2019).

<https://www.psychologytoday.com/us/blog/nurturing-self-compassion/201901/isolation-nation>

**“Loneliness and Social Isolation as Risk Factors for Mortality”**

by Julianne Holt-Lunstad, Timothy B. Smith, Mark Baker, Tyler Harris and David Stephenson (*Journal for the Association of Psychological Science*: March 11, 2015).

<https://journals.sagepub.com/doi/10.1177/1745691614568352>

**“The Loneliness Epidemic”**

(Health Resources & Services Administration: January 2019).

<https://www.hrsa.gov/enews/past-issues/2019/january-17/loneliness-epidemic>

***Loneliness: Human Nature and the Need for Social Connection***

by John T. Cacioppo and William Patrick (W.W. Norton & Company: August 10, 2009).

<https://www.amazon.com/Loneliness-Human-Nature-Social-Connection/dp/0393335283>

**“Loneliness is Harmful to our Nation's Health”**

by Claire Pomeroy (*Scientific American*: March 20, 2019).

<https://blogs.scientificamerican.com/observations/loneliness-is-harmful-to-our-nations-health/>

***The Lonely American: Drifting Apart in the Twenty-First Century***

by Jacqueline Olds, M.D., and Richard S. Schwartz, M.D. (Beacon Press: February 1, 2010).

<https://www.amazon.com/Lonely-American-Drifting-Twenty-first-Century/dp/0807000353>

**“Millennials and the Loneliness Epidemic”**

by Neil Howe (*Forbes*: May 3, 2019).

<https://www.forbes.com/sites/neilhowe/2019/05/03/millennials-and-the-loneliness-epidemic/#14ea2f087676>

**“New Study Reveals Loneliness at Epidemic Levels in America”**

by Ellie Polack (Cigna Global Health Services: May 1, 2018).

<https://www.cigna.com/newsroom/news-releases/2018/new-cigna-study-reveals-loneliness-at-epidemic-levels-in-america>

**Partners in Hope website (2020).**

<https://www.PartnersInHopeLakeTravis.org>

**“Social Isolation and Loneliness are America’s Next Public Health Issues”**

by Jay Bhatt, DO, and Jonathan McKinney, MPH (Becker’s Hospital Review: December 2, 2019).

<https://www.beckershospitalreview.com/population-health/social-isolation-and-loneliness-are-america-s-next-public-health-issue.html>

**“Social Isolation in America”**

by Paola Parigi and Warner Henson II (Stanford University Annual Review of Sociology: July 2014).

<https://sociology.stanford.edu/publications/social-isolation-america>

**“Social Isolation: It Could Kill You”**

by Amy Novotney (Journal of the American Psychological Association: May 2019).

<https://www.apa.org/monitor/2019/05/ce-corner-isolation>

**“Social Isolation, Loneliness in Older People Pose Health Risks”**

(National Institute on Aging: April 23, 2019).

<https://www.nia.nih.gov/news/social-isolation-loneliness-older-people-pose-health-risks>

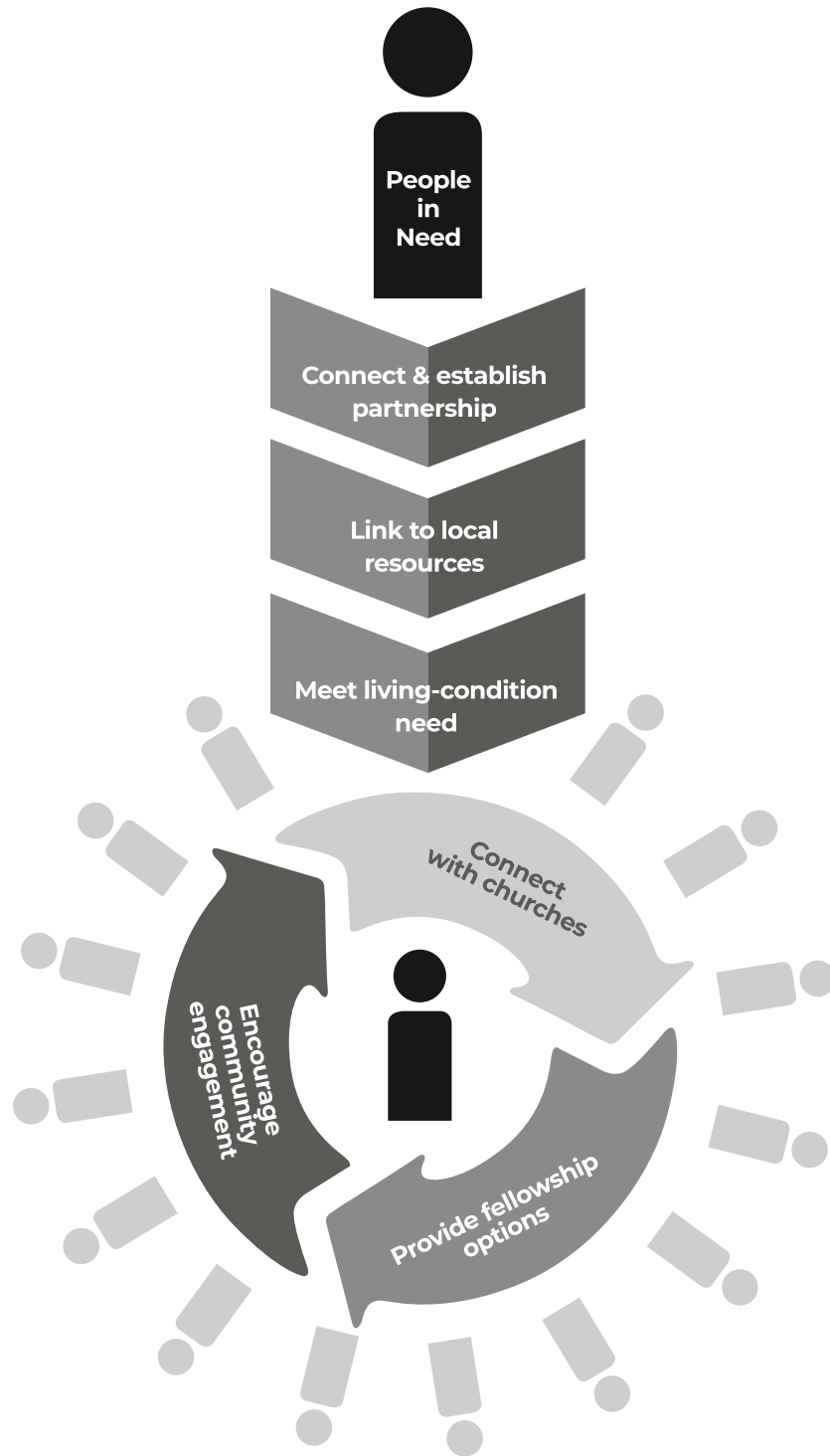
**“20 Facts About Senior Isolation That Will Stun You”**

by Sarah Stevenson (A Place for Mom/Senior Living Blog: November 15, 2019).

<https://www.aplaceformom.com/blog/10-17-14-facts-about-senior-isolation/>

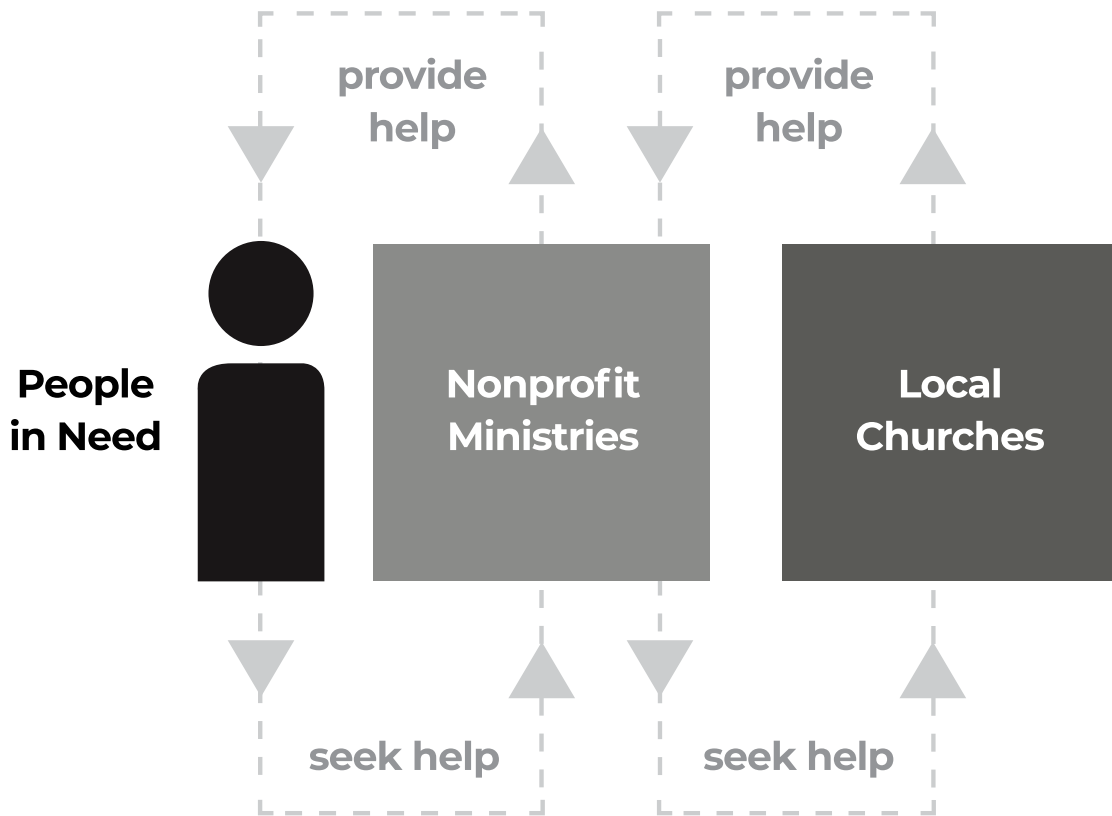
# The Serving Model

*Partners in Hope*



## Traditional Serving Paradigm

*Silos and Separation*

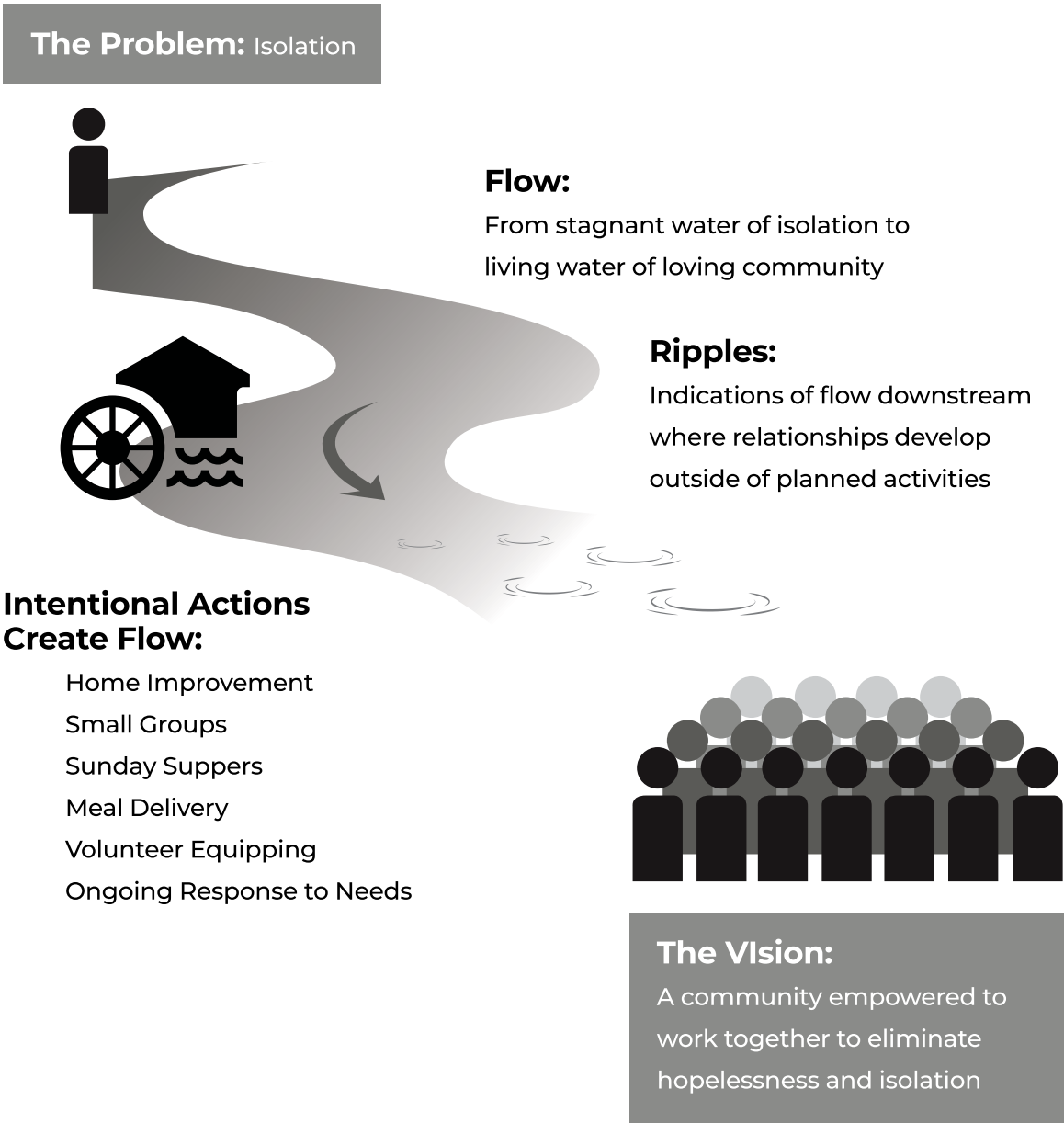


## **Kingdom Serving Paradigm** *Collaboration and Communication*



## The Ripple Effect

*How the Serving Process Impacts the Community*









## Partnership Mapping Tool

### *Kingdom Serving Opportunities*

Person/Family to be Served	Specific Needs	Best Partner to Engage for Meeting Those Needs