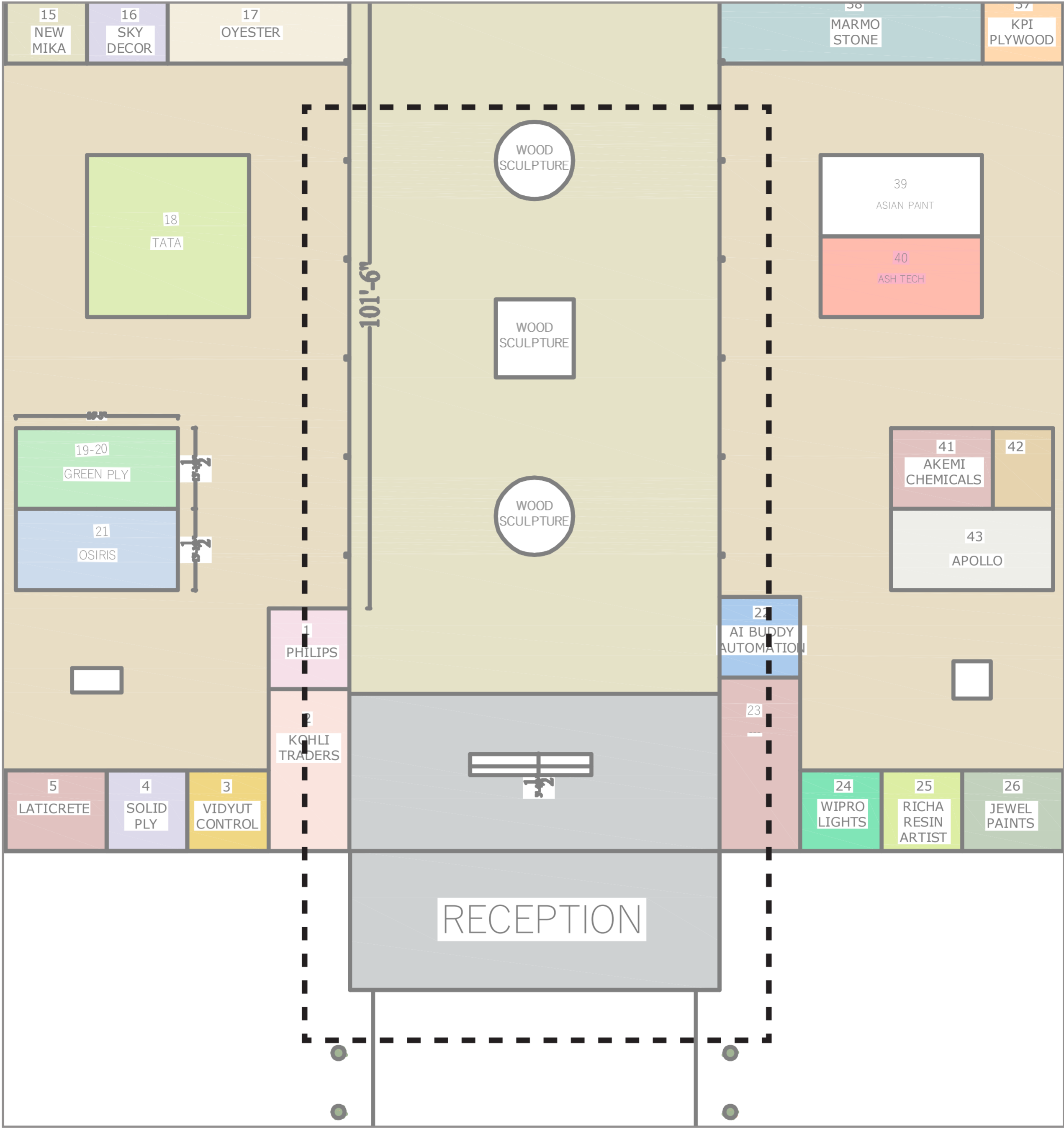




Proposal by -

Wood Style Team,  
 Ar. Anurag Khandelwal (Founder)  
<https://architectanuragkhandelwal.com/>





Area of  
Intervention

## **Design Concept: A Pavilion That Grows With You**

At its heart, this pavilion tells a story—a story of nature, growth, and connection. By using mass timber, a material that is as strong as it is sustainable, the design brings people closer to nature while showcasing timber’s beauty and potential for the future. This isn’t just a structure; it’s a space that feels alive, warm, and welcoming.

### **A Tree That Grows With You**

Imagine walking into a space where a tree-shaped structure greets you, its form familiar yet inspiring. Just as a tree grows strong and steady, timber—as a material—represents growth, strength, and renewal. The tree form doesn’t just stand there; it invites you to pause, look up, and reflect on how timber grows and gives back to the world.

### **A Loop That Brings Us Together**

At the heart of the design is a continuous timber loop that wraps around you like an embrace. Made of stacked and arranged timber sections, the loop tells the story of wood’s journey—from the forest to construction, to a structure that can once again return to nature. It’s a space where you can walk, sit, or just be, feeling connected to something bigger and more lasting. The tactile surfaces invite you to touch, lean on, or interact with the material. It’s warm to the hand and comforting to the eye, making the space feel like it was made for people, not just for show.

### **A Warm Welcome**

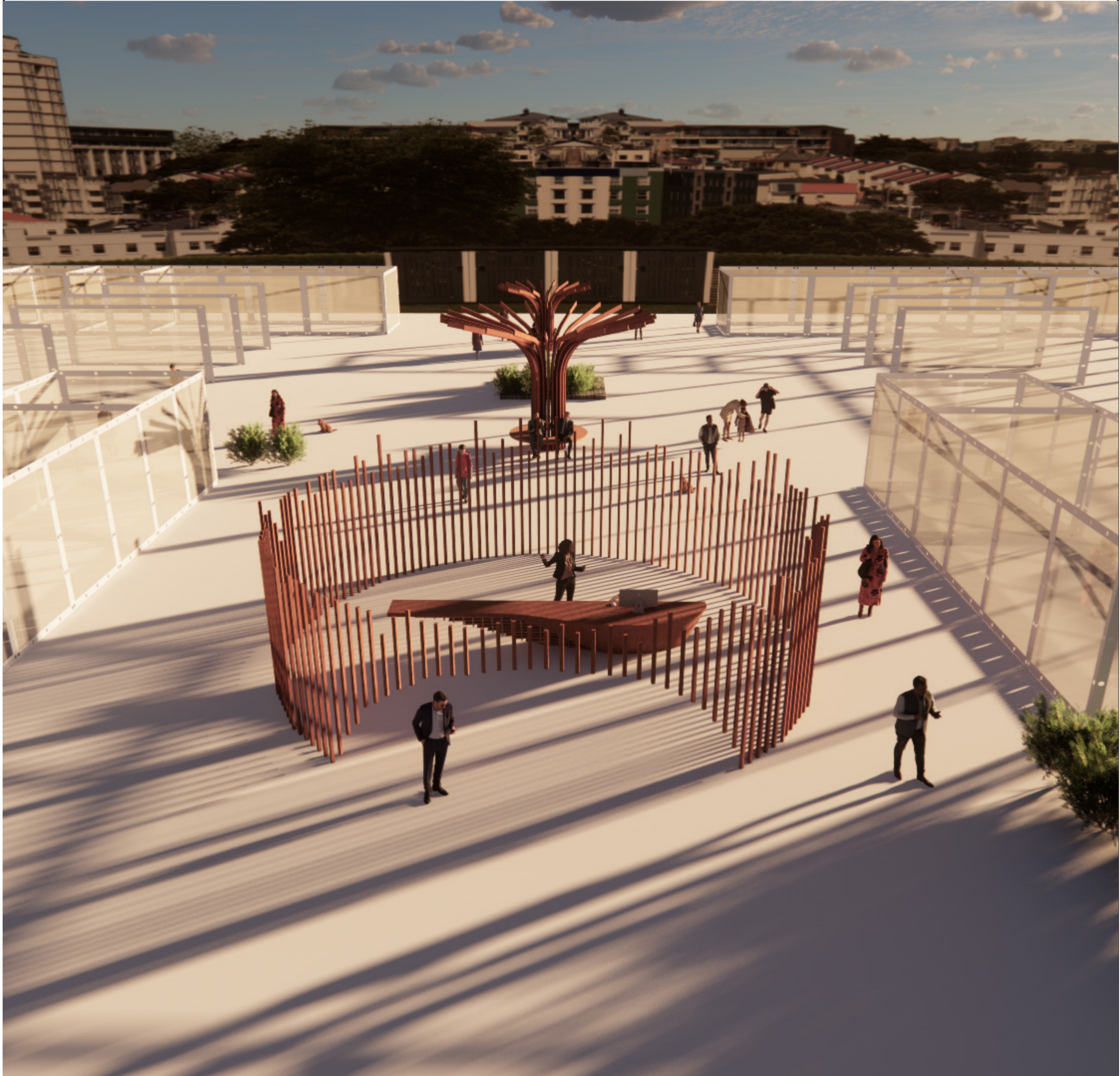
Timber has a way of making a space feel like home. Its natural grain, its earthy tones, and its quiet strength create a space that feels open and approachable. Whether you come alone or with others, the pavilion invites you to slow down—to sit, chat, reflect, or explore.

### **Why This Matters:**

This pavilion is more than a design; it’s an experience. It shows what timber can do—not just structurally, but emotionally. The tree-like form reminds us of growth and resilience, while the looping sections create spaces that bring people together. This is a place where nature, people, and material come together to create something beautiful, familiar, and full of life.



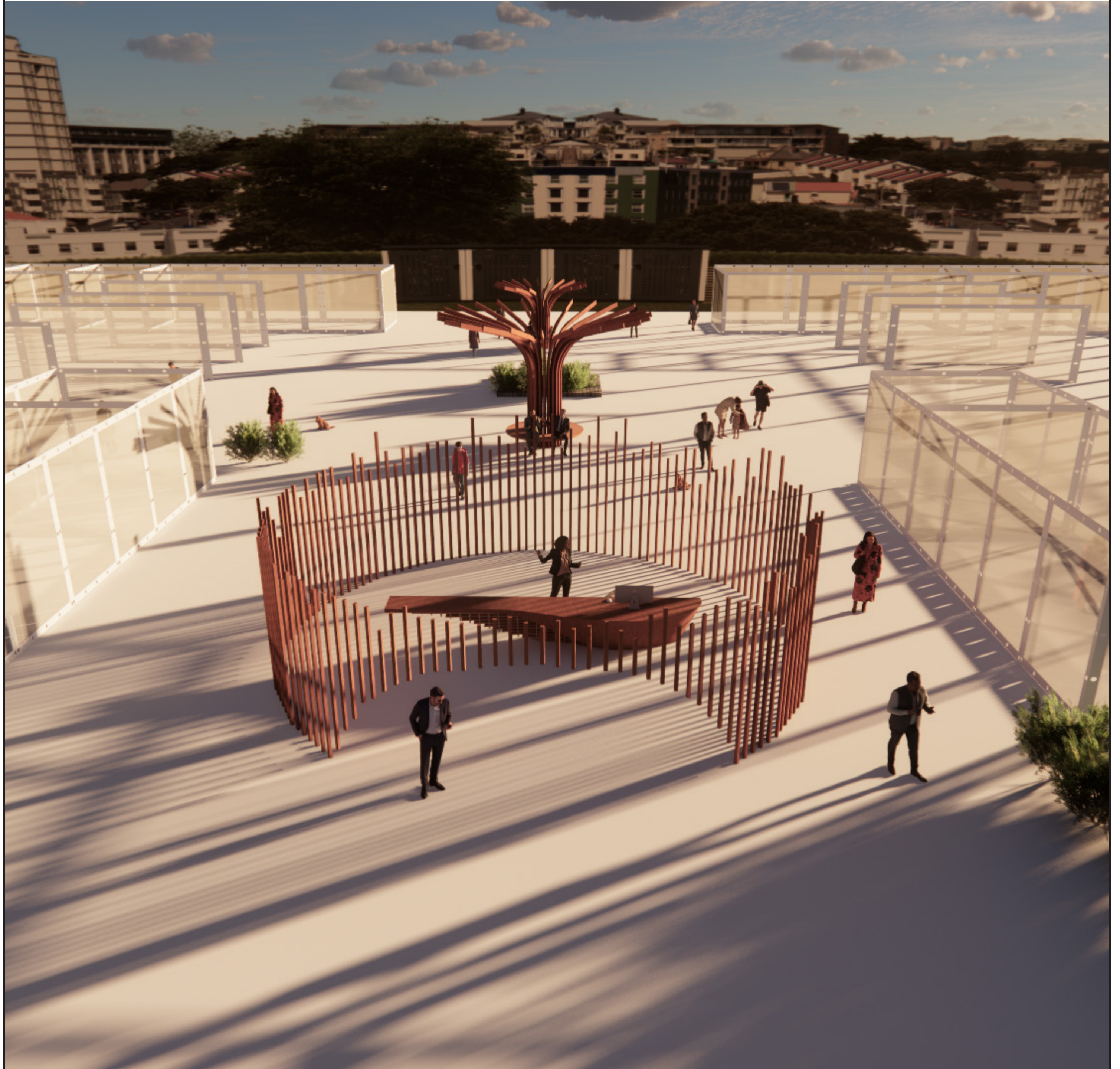
Plan view of the pavillion



Proposed Renders of the pavillion



Proposed Renders of the pavillion



Proposed Renders of the pavillion



Proposed Renders of the pavillion



Proposed Renders of the pavillion



Proposed Renders of the pavillion



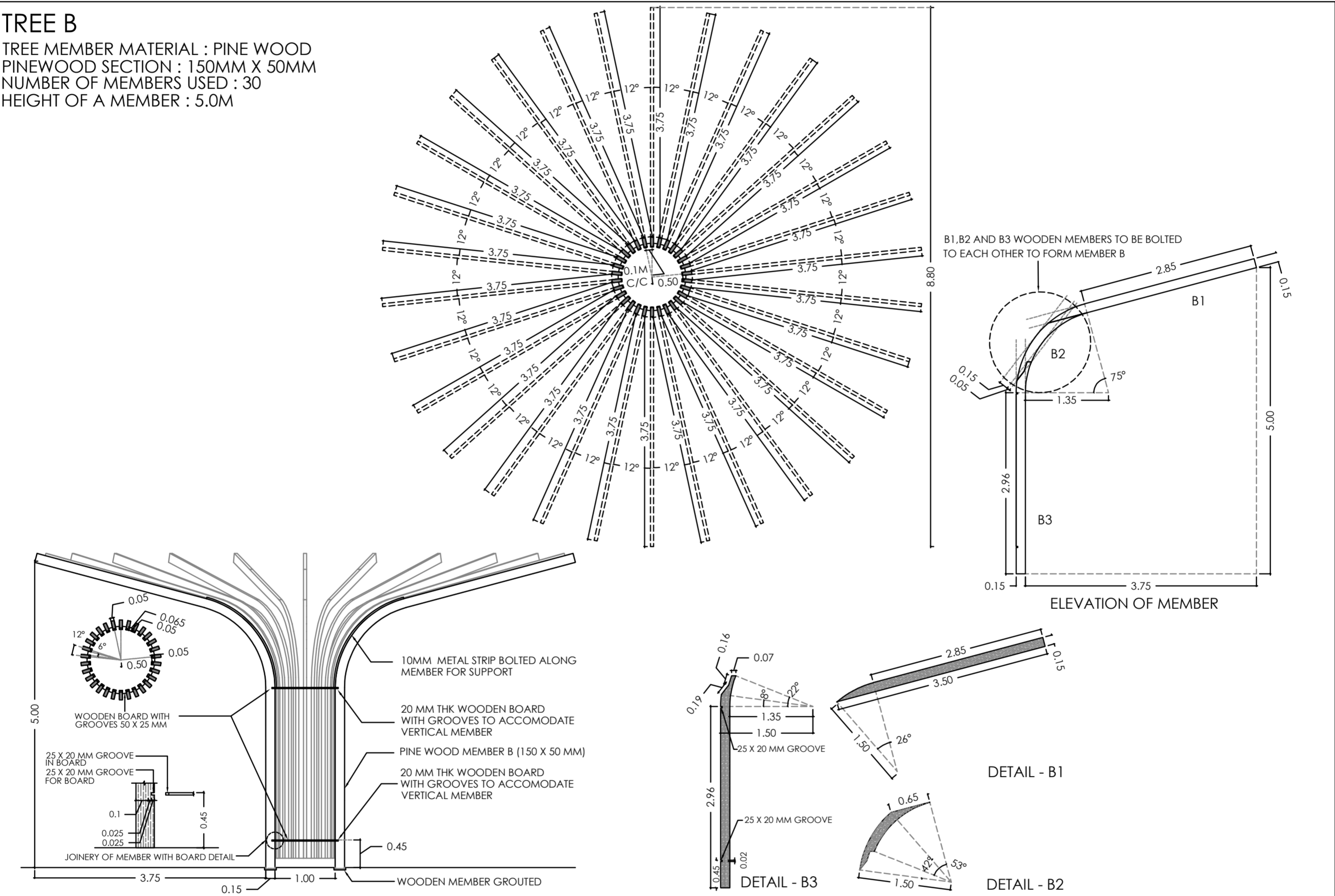
Proposed Renders of the pavillion



Proposed Renders of the pavillion

TREE B

TREE MEMBER MATERIAL : PINE WOOD  
PINWOOD SECTION : 150MM X 50MM  
NUMBER OF MEMBERS USED : 30  
HEIGHT OF A MEMBER : 5.0M



IIID PAVILION, HYDERABAD

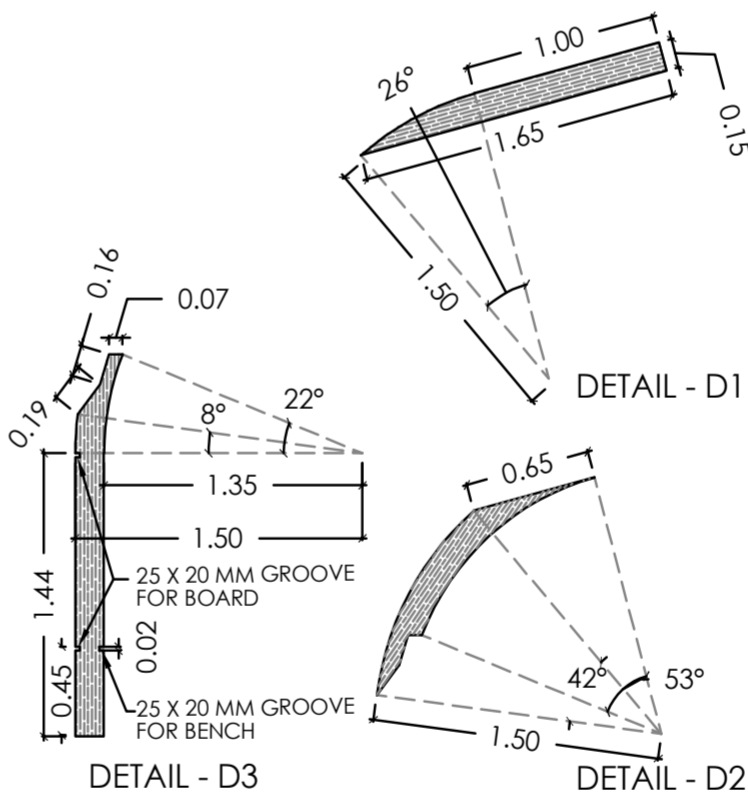
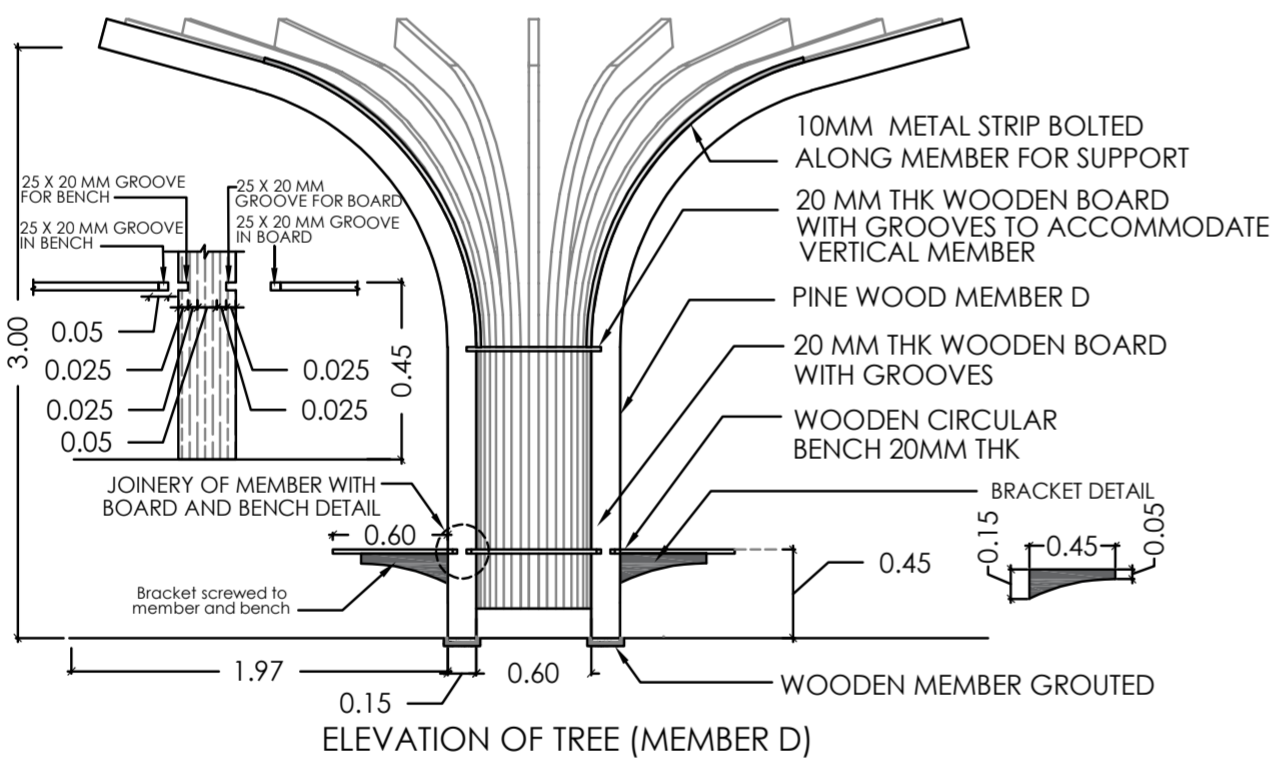
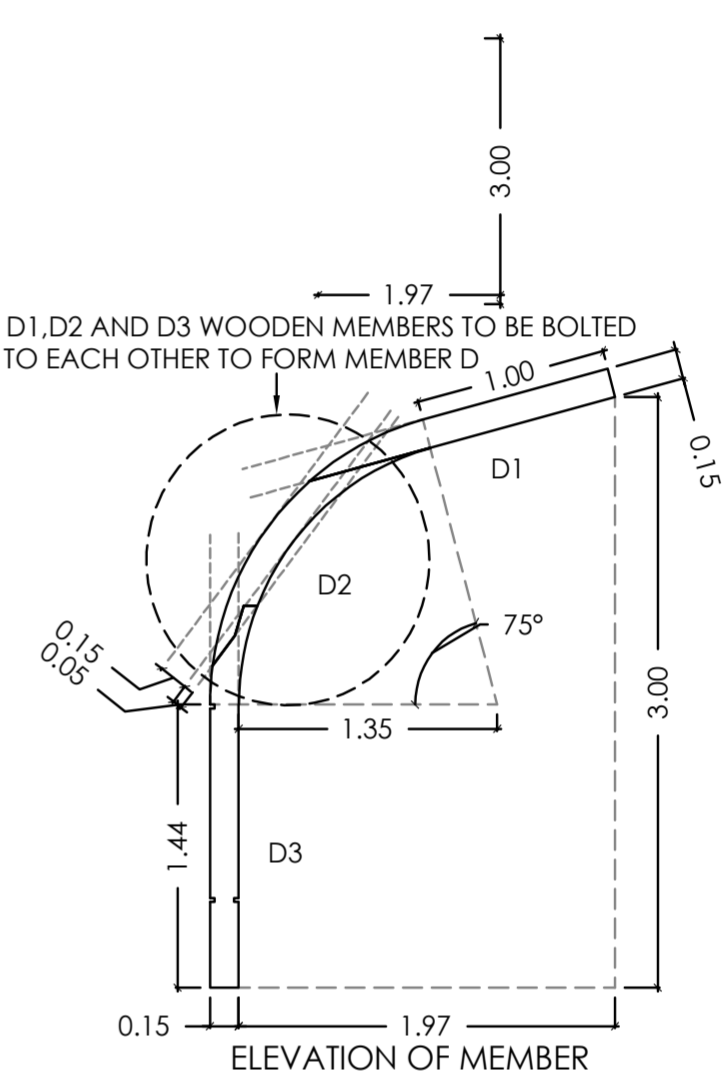
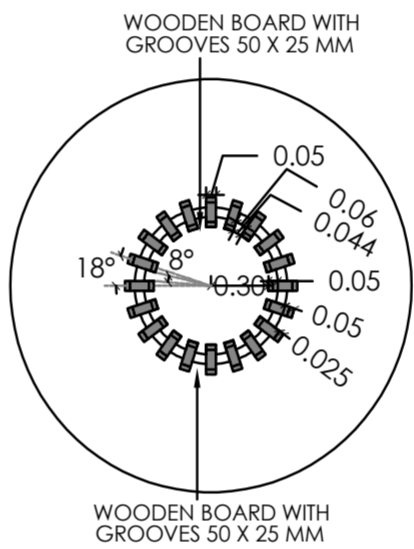
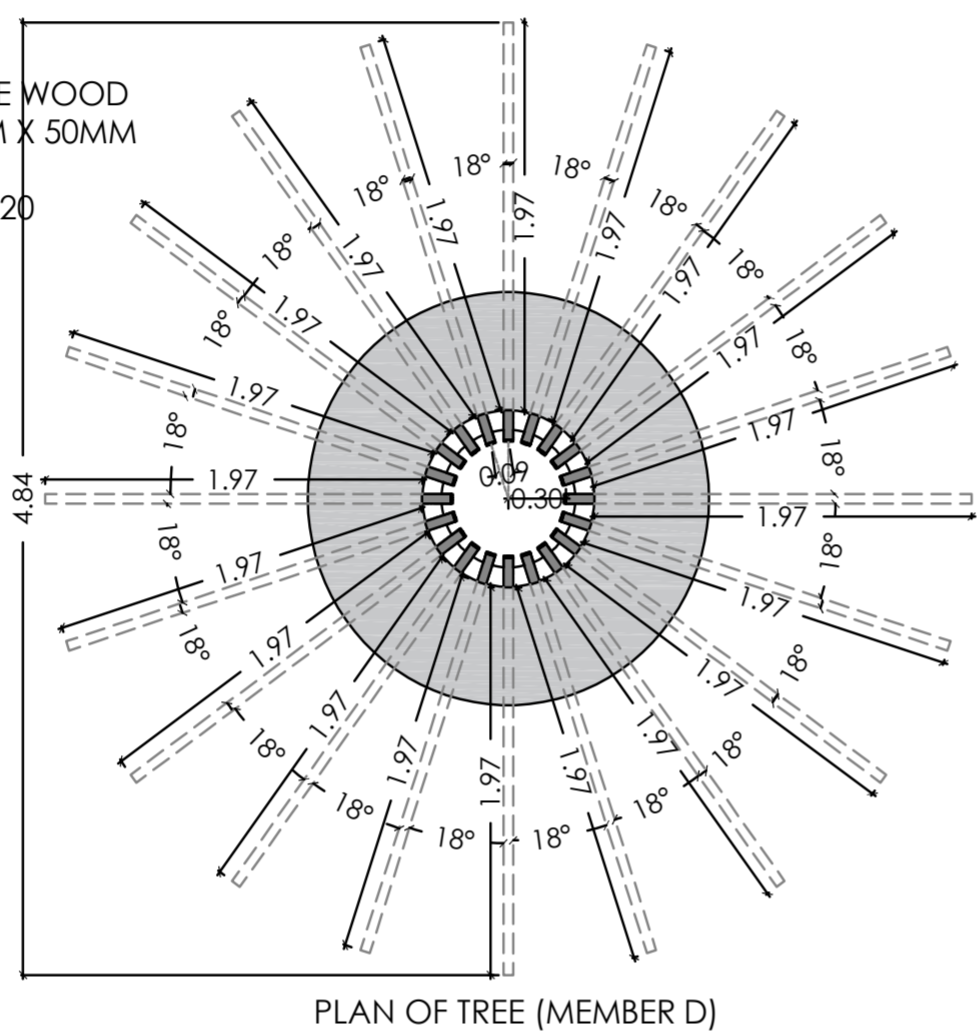
TREE B - DETAIL WORKING DRAWING

SCALE - 1:75 (A3) | DATE - 12.05.24 | REVISION - R0  
NOTE - ALL DIMENSIONS ARE IN METERS

Detail drawings of the tree structure

TREE D

TREE MEMBER MATERIAL : PINE WOOD  
PINWOOD SECTION : 150MM X 50MM  
MEMBER HEIGHT : 3.0M  
NUMBER OF MEMBERS USED : 20



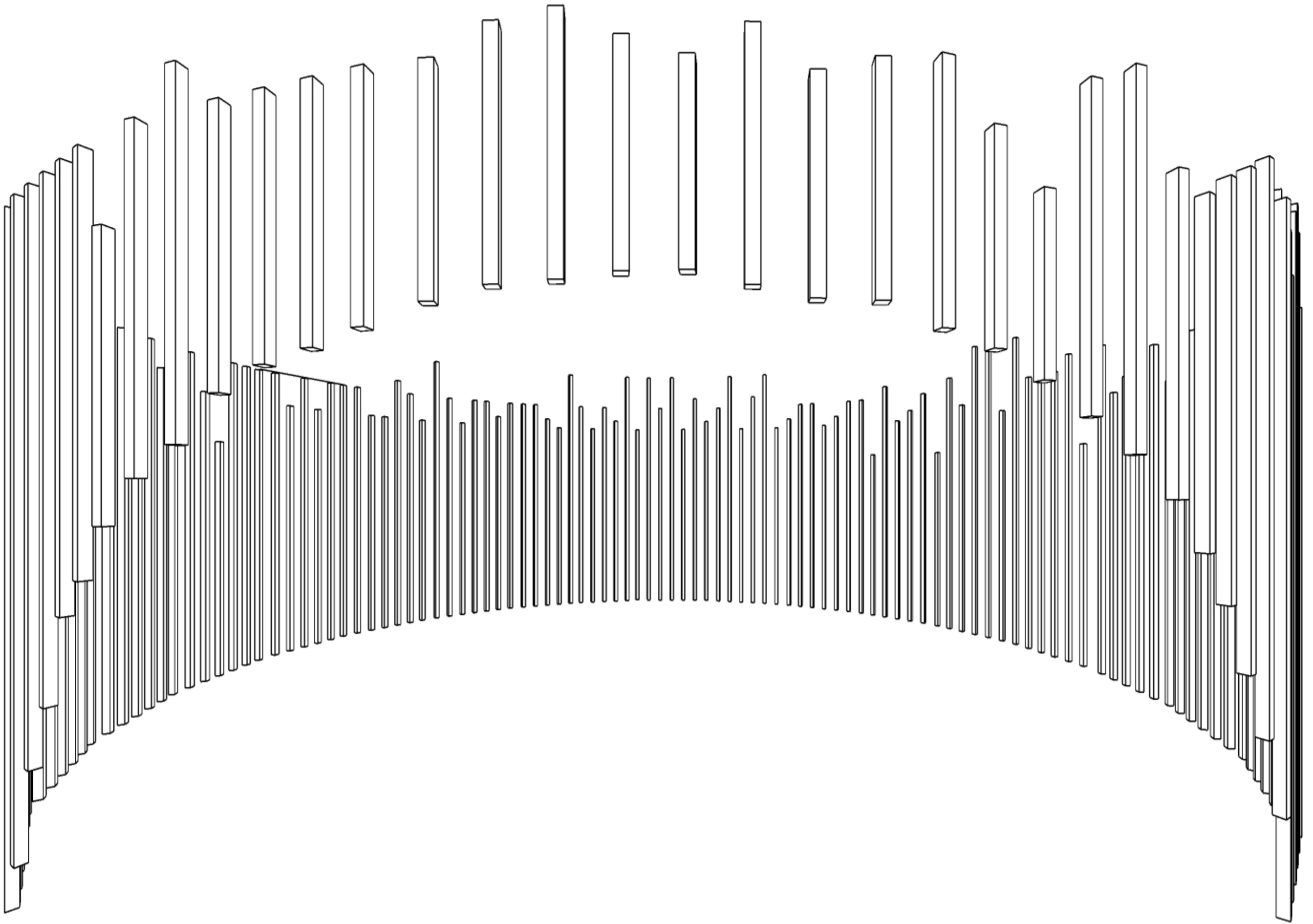
IIID PAVILION, HYDERABAD

TREE D - DETAIL WORKING DRAWING

SCALE - 1:50 (A3) | DATE - 12.05.24 | REVISION - R0

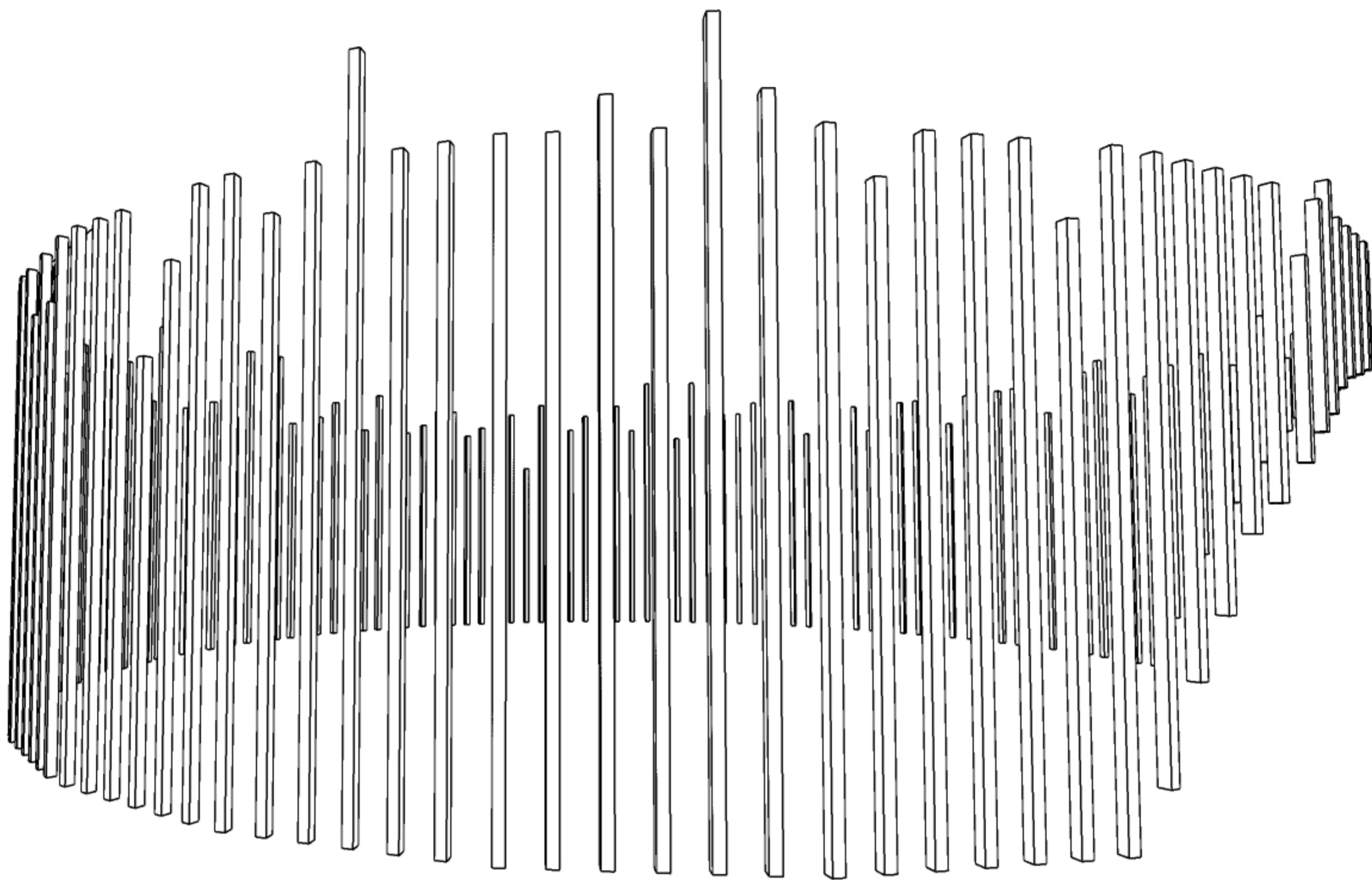
NOTE - ALL DIMENSIONS ARE IN METERS

Detail drawings of the tree structure



1.5" X 8" : Sections are proposed beacuse of procurement of raw materail, however section of 2" x 2" or any other sizes depending on the raw materails can be used.

Concept drawing of the reception area



Concept drawing of the reception area

	Budget			
Sr. no.	Description	Total CFT	Rate (In Rs)	Cost (In Rs)
1	Material Cost	290	3750	1087500
2	Hardware	290	150	43500
3	Labour CHarges	290	250	72500
3	Logistics			20000
	Total			1223500

Budget Considering Details :  
**1. Materail : Using Pine Wood & SPF Structure**

2. Water-Based Coating (Exterior):  
Cost of Coating: Included in the material rate  
Coating involves sanding, priming, and applying water-based protective layers suitable for exterior conditions.

3. Hardware:  
Necessary hardware for assembly and installation, including screws, brackets, and hinges.

4. Labor Charges:  
Sanding, finishing, and coating application  
Assembly and installation of hardware

5. Logistics:  
Transportation and delivery of finished timber sections to the client’s location