

POMPEII

Tile | Terrazzo | Flooring



Italian Craftsmanship, Built to Last

Pompei Inc. is a family-owned business with a rich history of installing quality flooring materials since 1951. For four generations, we have embraced old-world Italian skills passed down from the company's founder, Orlando Pompei.

Our experienced team, most with over 20 years in the industry, prioritizes safety, and fosters a culture of integrity, honesty, customer service, and proactive problem solving. We also value the importance of staying at the forefront of the industry's best practices, receiving ongoing training and instruction from industry-leading associations, including National Tile Contractors Association, National Terrazzo and Mosaic Association, Tile Council of North America, Natural Stone Institute, American Society of Concrete Contractors, Resilient Floor Covering Institute, The Carpet and Rug Institute, Associated Builders and Contractors, Associated General Contractors

Geographic Locations

Our strategic location of our management, supervisors and installers enables us to successfully serve Virginia and the Carolinas on a daily basis; however, there is no limitation as to where we perform work. Pompei has a long history of performing renovation work on cruise ships while under sail, which has led to the establishment of complex logistics capabilities and just-in-time deliveries to ships while in port. We have successfully completed projects in Oregon, Florida, New York, Bermuda, The Virgin Islands, and Portugal.

Charleston

1629 Meeting Street Road
Charleston, SC 29405
(843) 624-1531

Newport News

733 Bluecrab Road
Newport News, VA 23606
(757) 873-0819

Richmond

2093 Dabney Road
Richmond, VA 23230
(804) 755-4533





Project Capabilities

Preconstruction Services: Our estimators are highly trained to understand the entirety of the proposed project, allowing us to provide accurate and competitive estimates.

Project Management: Teamwork and coordination, timeliness, communication, and goal-oriented project execution are how we deliver the best products and installations possible.

Skilled Craftsmanship: We deliver customer satisfaction through the high-level and wide-ranging skills of our craftsmen, adhering to critical timelines without sacrificing quality.

Field Supervision: Our experienced field supervisors are highly adept in the successful installation, problem solving, and management techniques we've utilized since our inception.

Quality Control: We are committed to delivering unparalleled customer service, quality, and excellence, whether it's restoration, repairs, maintenance, or new installations.

Value Management: We offer solutions that provide project cost savings without compromising quality and serviceability of design components.

Financial Stability

Financial Strength: Pompei has a strong balance sheet with no operational debt. Our working capital well exceeds the requirements needed to operate the business and fund our work in process which is becoming more important each day with the deposits required from many suppliers now.

Bonding: Pompei can provide payment and performance bonds up to any size required for projects. We have a longstanding relationship with Western Surety Company (A.M. Best Rating of A - Excellent).





Products Offered & Installed

Tile: Porcelain, ceramic, agglomerated, precast terrazzo, large format porcelains, sintered stone, mosaics, glass, metal tiles in various colors and styles.

Terrazzo: Epoxy and cement matrix systems and all precast terrazzo elements: stair treads, base, countertops, wall panels, etc.

Stone: Marble, granite, limestone, quartz, quartzite, and sintered stone. Flooring, wall panels, stone tops and exterior veneers, stairs, planters

Fabricated Stone: Pompei has its own fabrication shop, allowing for fast-track manufacturing and just-in-time delivery of custom-made stone and terrazzo

Resilient Flooring: LVT, LVP, vinyl tiles, static dissipating, sheet vinyl, rubber tiles, rubber stair treads, seamless resilient systems

Commercial Carpeting: Options include all varieties of natural and synthetic fibers at varying pile heights, carpet tiles, and broadloom

Surface Preparation Capabilities

Spray Lock Moisture Mitigation: Applied over concrete flooring substrates to prevent moisture related flooring failures for the life of the building.

Concrete Polishing: Diamond grinding, staining, overlay systems, densifying, polishing, sealing.

Substrate Preparation: Shot blasting, scabbling, grinding, milling/planning, scarification, HEPA vacuum systems, moisture mitigation primers, core drilling.

Surveying: Internal moisture readings of concrete slabs, topographical mapping, stairway structure consulting.

Mortar Beds: Self-leveling, sloped, thickset mortar beds, quick-patch mortars, flashing and epoxy mortars.

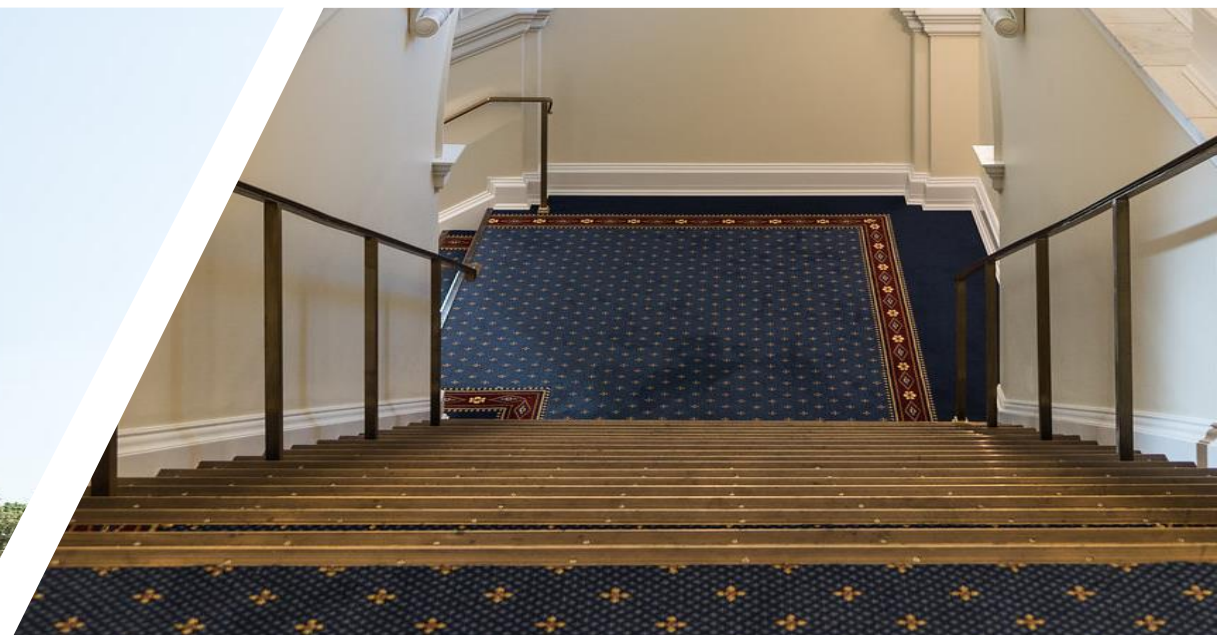


Construction Partners Served

A. D. Whitaker
Allcon Contracting
Archer Western Contractors, LTD. - PA
Armada/Hoffler
Atlantic Constructors
Balfour Beatty Construction
Barton Malow
Baylor Corporation
Branch Builds
C. L. Lewis & Co., Inc.
Causey Contracting
Centennial Contactors
Century Construction
Choate Construction
Clancy & Theys
Commonwealth Commercial Construction
Conlan Company
Desbuild
E.T. Gresham
Ediface
Emerald Construction
EMJ Construction
English Construction
EPOC Construction
Frank Saul Construction
Gilbane Building Company
Graycor Construction Company
Hansel Phelps
Heartland Construction
Henderson, Inc.
Hensel Phelps - VA
HITT Contracting, Inc.
Hoar Construction
Hourigan Group

Howard Shockey & Sons, Inc.
Hoy Construction
J.E. Jamerson & Sons, Inc.
Jamerson Lewis Construction
KBR Building Group
KBS Construction
Kjellstrom & Lee
Landmark Construction
Loughridge & Company LLC
M. A. Mortenson Company
Mashburn
Mathers Construction Co.
MB Kahn
Mid Atlantic Construction Group
Mid Eastern Builders
Monteith
New Atlantic Contracting, Inc.
Oakmont Contracting
R.E. Lee & Son, Inc.
Ritchie-Curbow Construction
RQ Construction
Southeast Cherokee Construction
Southwood Building Systems, Inc.
Sussex Development Corporation
T. A Loving Company
Taylor & Parrish
Tazwell Contracting
TST Construction
Tutor Perini Building Company
Vannoy Construction
Virtexco Corp.
W. M. Schlosser Company
Whiting-Turner
WM Jordan





Proud to Have Completed Work For

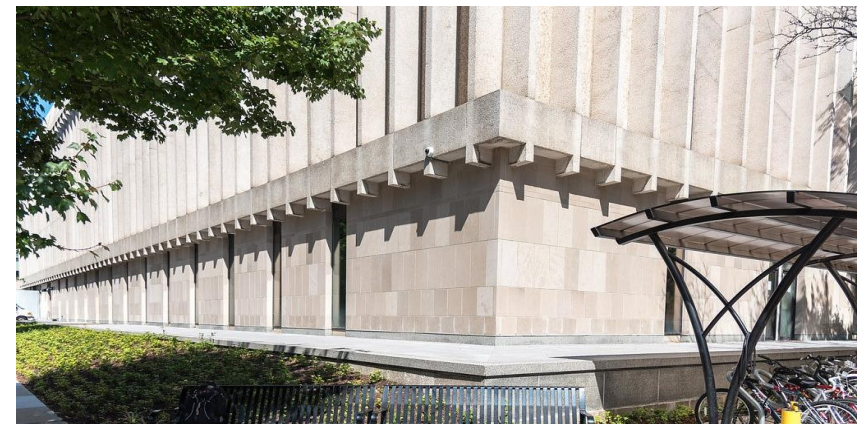
Amazon
Amerigroup
Anheuser-Busch
Audi
AutoZone
Bank of America
Black History Museum
BMW
Boeing
Camp Perry
Capitol One
CarMax
Chevrolet
CHKD
Costar
Country Club of Virginia
Damneck Naval Base
Dollar Tree
Dominion Energy
Embassy Suites
Fairfield Inn & Suites
Federal Reserve
Ferguson Enterprises
Fort Eustis Army Base
Fort Lee Army Base
Glaxo Smith Kline
H&M
Hampton Roads Bridge Tunnel
Harley Davidson
Hilton Hotels
Hyatt Hotels
Hyundai
J.M. Smucker
Kings Dominion
Langley Airforce Base
Lumber Liquidators
Marriott
Mercedes-Benz
Monitor Merrimac Tunnel

NASA
Nestle
Newport News Shipbuilding
Newport News/Williamsburg
International Airport
Norfolk International Airport
Norfolk Naval Station
Norwegian Cruises
Operation Smile Headquarters
Oracle
Philip Morris International LLC
Princess Cruises
Priority Auto Group
Quality Technology Services
Richmond International Airport
Riverside Medical
Rolls Royce
Royal Caribbean
Science Museum Of Virginia
Sentara
Smithfield Foods
South State Bank
STIHL
Surry Nuclear Plant
Tiffany & Co
Towne Bank
Toyota
Truist
USAA
V.B. Police Special Ops
VA Credit Union
Veteran Affairs Hospital
Virginia Department of Transportation
Virginia Institute of Marine Science
Washington Redskins
Wegman's
Wells Fargo
Yankee Candle
YMCA

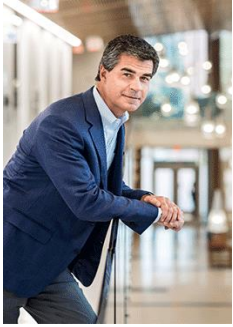
Higher Education

Benedictine College
Christopher Newport University
Governors School For The Arts
Hampton-Sydney College
Hampton University
James Madison University
Longwood University
Norfolk State University
Old Dominion University
Richard Bland College
University of Mary Washington
University of Richmond
University of South Carolina
University of Virginia
Virginia Commonwealth University
Virginia Military Institute
Virginia State University
Virginia Tech
Virginia Wesley University
Washington and Lee
William and Mary





Leadership



Drew Forrest | CEO

Serving as the CEO of Pompei, Drew Forrest joined the Pompei team in 1986. He earned his Bachelor of Science in Business Administration, concentrating in Marketing, from the University of Richmond, E. Claiborne Robbins School of Business. Proudly running the business with integrity, Drew thrives on developing strategic relationships with customers and meeting and exceeding customers' expectations.



Daniel Kunkel | President

Daniel has been in the tile, stone and granite industry for over 25 years. He has served in every facet of the industry, including fabrication, installation, estimating and project management. While working full time, Daniel attended college and received his Bachelor's Degree in Religious Studies from Regent University. His skills in estimating and project managing have established him as a trusted resource for owners, architects and contractors. Daniel's communication and management skills have not only given him the ability to complete complex projects but also allow him to focus on quality and service to our customers.



Don Sexton | VP of Special Projects and Safety

Don Sexton serves as the Vice President of Operations and Safety Director at Pompei. He graduated from Virginia Tech in Building Construction Engineering with a minor in business. He has been in the construction business for 38 years and began his work in construction as a superintendent. Don holds several training certifications including:

- OSHA Expert (OSHA 30, Army Corp of Engineers EM 385 24-hour Competent Person Course, Authorized Rescuer, Program Manager Course)
- Over 340 job site safety orientations, courses, training and instruction

Safety

At Pompei, we believe that a safe work environment is the foundation of exceptional craftsmanship. Our commitment to safety extends beyond compliance; it is ingrained in our company culture. We continuously invest in advanced safety training and state-of-the-art equipment to protect our team and clients. Each project is meticulously planned and executed with a focus on minimizing risks and ensuring a secure job site. With our experienced crews and rigorous safety protocols, you can trust us to deliver not only beautiful flooring but also peace of mind.

Safety is the cornerstone of our work. Our safety related training, written policies and procedures are in full compliance with all applicable OSHA and Contracting Firm requirements. Our field management, crews and equipment operators all have required training and certifications. Our crews average over 10 years of experience, which ensures top quality and unsurpassed safety compliance in all regards.

At Pompei, our dedication to safety is reflected in our comprehensive safety programs and certifications. Our Safety Manual outlines detailed policies and procedures that comply with OSHA requirements, ensuring every task is performed with the highest safety standards. New hires undergo rigorous safety orientation, and our field management team, along with a significant portion of our field staff, are OSHA 30 Hour Trained & Certified. Additionally, all employees are certified in First Aid, CPR, and AED, with renewals every two years. We also implement a specialized Crystalline Silica Health & Safety Program, accredited by Georgia Tech. Each project features site-specific safety plans, daily pre-task planning, and safety inspections, ensuring a secure environment for both our team and clients. Our commitment to safety is unwavering, providing you with not only exceptional flooring but also the assurance of a safe and compliant worksite.



Target Markets

 Condominiums

 Education

 Government

 Healthcare

 Hospitality

 Military

 Office

 Retail

 Transportation

Trade Associations



National Tile Contractors Assoc.



The Carpet and Rug Institute



National Terrazzo and Mosaic Assoc.



Associated Builders and Contractors



Tile Council of North America



Natural Stone Institute



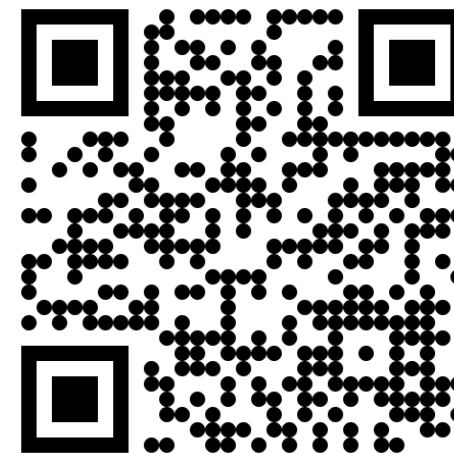
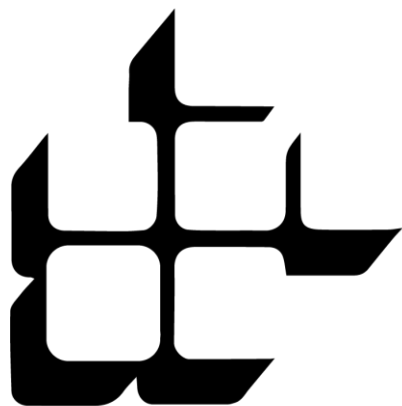
Associated General Contractors



American Society of Concrete Contractors



Resilient Floor Covering Institute



www.Pompeinc.com

POMPEI

Tile | Terrazzo | Flooring

Newport News

733 Bluecrab Road
Newport News, VA 23606
(757) 873-0819

Richmond

2093 Dabney Road
Richmond, VA 23230
(804) 755-4533

Charleston

1629 Meeting Street Road
Charleston, SC 29405
(843) 624-1531