



# SMART ARMOURE RESIDENTIAL ROLLING SHUTTERS

From Insight Automations

# ARMOURE RESIDENTIAL ROLLING SHUTTERS

Insight Automations designs and manufactures a wide range of Automated Rolling Shutters that perfectly suits to any architectural environment – from modern and traditional Buildings

The range includes, insulated, non insulated, Galvalume Steels, Fiber And Aluminum, with advanced safety features and high quality standards and are easy to operate

## Residential Smart Pro Series

The products are featured with optional Safety Accessories and Smart voice control via smart phones with Google assistant

## Residential Economic Series

Economic Range Safety Shutters with basic configurations

# TYPES OF RESIDENTIAL ARMOURE SERIES ROLLING SHUTTERS

GALVALUME FLAT PERFORATED ROLLING SHUTTERS

GALVALUME FLAT ROLLING SHUTTERS

FIBER TRANSPARENT ROLLING SHUTTERS

ALUMINIUM ROLLING SHUTTERS

# RESIDENTIAL SMART PRO SERIES GALVALUME ROLLING SHUTTER

Galvalume Rolling Shutters are ideally suited for most types of Residential and Commercial applications. The Aluminum – zinc alloy coating offers excellent corrosion resistance. It retains the sacrificial properties of zinc 55 % relative to steel while Aluminum 43% and 2 % Silicon provides a tough film of Aluminum oxide to increase barrier protection.

Galvalume Rolling Shutters continue to gain approval by specifiers, architects, building owners and many others due to its versatility, ease of use, aesthetics and long-term performance

## SPECIAL FEATURES

**Noise Free Operation**

**Galvalume High Tension Steel With 500-550 Mega Pascal Tensile Strength**

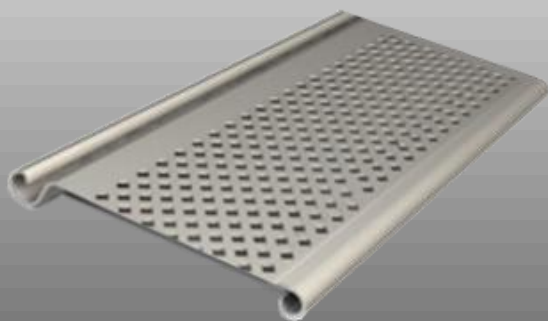
**Single walled 0.9mm , 1.0mm and 1.02mm Slat Thickness as per customer choice**

**The bottom profile of the Shutter is incorporated with additional stiffeners to provide an additional strength**

**International Standard CNC Micro Perforation For Perforated Galvalume Slats**

**Premium Exterior Oven Baked Powder Coated finish with 40-50 Microns Thickness , Color as per customer choice**

# INTERNATIONAL FULL FLAT DESIGN



# WIDE COLOUR RANGE

---

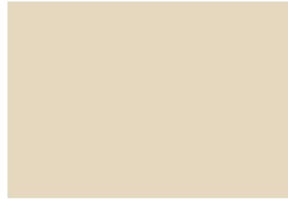
## STANDARD COLORS



White



Brown



Beige



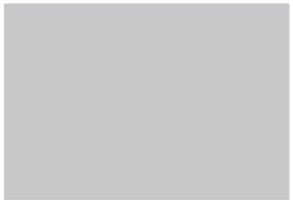
Green



Blue



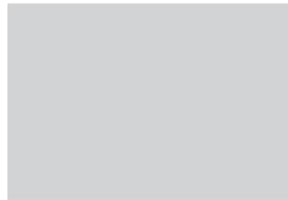
Claret



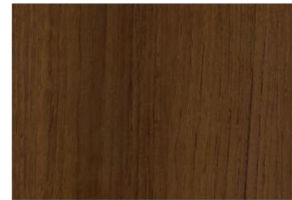
Silver



Gray



Unpainted  
(galvanized)



Dark walnut



Golden oak



During printing the colors may be distorted, use the original RAL-card.

# SMART FEATURES

Our Smart Pro Series Rolling Shutters  
Equipped with Latest Safety Features

**Safety Beam Sensor-** Personal safety device, while shutter Door is in Operation the shutter remains open as long as the photo beam sensor is interrupted.

## **Optional Safety Edge Bottom Profile**

Exclusive active bottom safety bar in conductive rubber to reverse motion or stops when shutter is closing if an obstacle is hit.

## **Optional Tampering Alarm System**

If someone is tampering the Shutter. It detects, an alarm shall be triggered.

**Voice control – Open or Close The Shutters  
Just with Voice Command**

**Google Home Integration, works with Alexa  
and Google Devices**

Safety Beam Sensor

Optional Safety  
Edge

Voice Control  
Operation

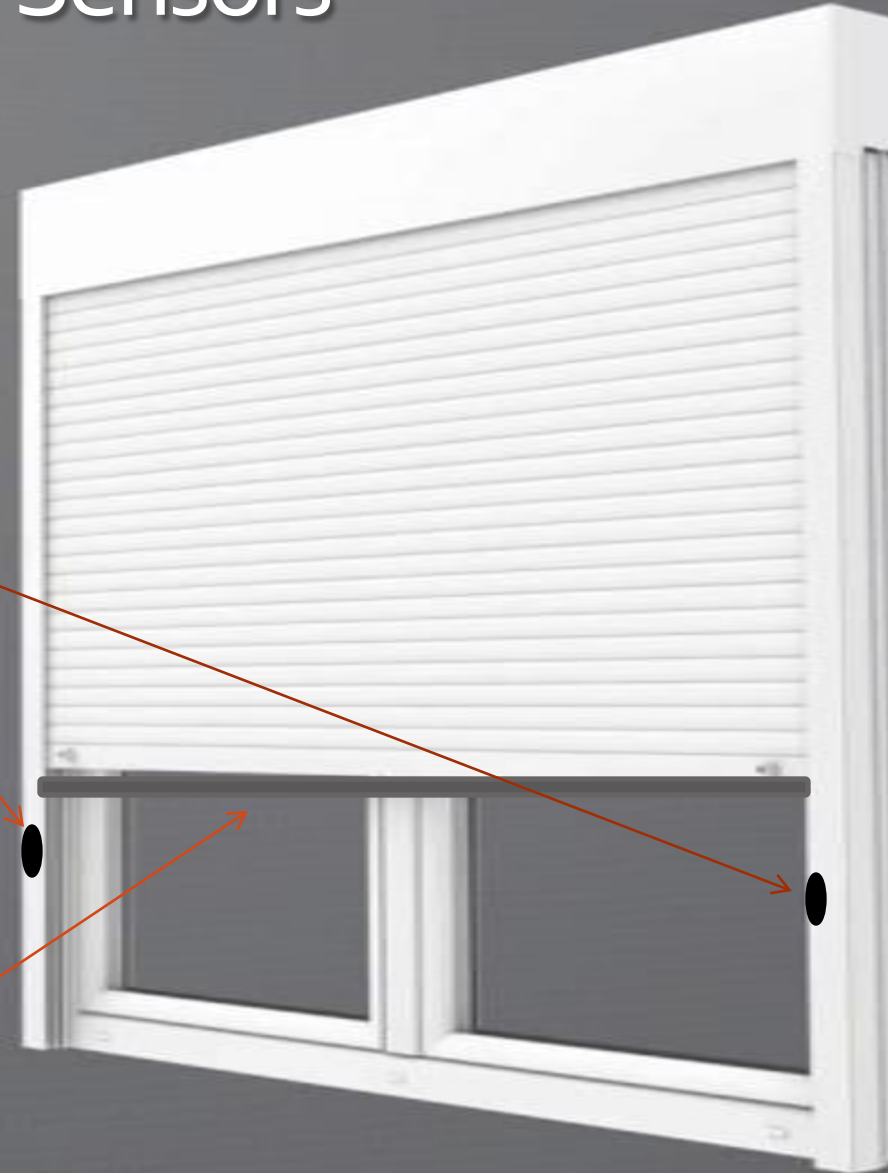
Google Home  
Integration

# Smart Safety Sensors

## Photo Beam Sensor



## Safety Edge Sensor





# DOOR CURTAIN TECHNICAL SPECIFICATION

Door Profile Type	Premium Residential Full Flat IGL78
Material	Galvalume Steel, Single Skin
Material Thickness	1.02mm /0.9mm
Surface Finish	Exterior Premium Powder Coated Finish with 40-50 microns Thickness
Profile height (mm)	78
Curtain weight kg/m2 Approx	13/15.5
Wind Load EN12424	10000
Acoustic Insulation	-
Structural Shape	International Full Flat Design
Standard Dimension	As per Site Requirement
Bottom Seals	Weather Resistant Flexible EPDM D Shaped Tubular Seal
Side Seal	L shaped vertical weather seals on both side of channel sections
Hood Cover	Optional

Bottom Profile	Powder Coated Bend Resistant , 25mm L Angle fitted on Both side using Rivets For elegant Look And Strength	
Side Channel	Powder Coated 2 to 2.5mm thick Galvanized Steel with integrated seals ensure quiet shutter travel	
Drive Shaft	Heavy duty Steel Pipe 60mm – 150mm (Depends upon the shutter size and drive unit) with Two coat of grey epoxy primer by spray	
Safety Devices (optional)	Photo Beam Sensors Safety Edge Sensor Flash Light	
Drive Unit	Centre Drive Motor Side Mount Direct Drive Motor Tubular Direct Drive Motors	Depends Upon The site Condition
Controller	Remote controller Push button Contact Voice Control via Smart Phones – Optional Smart Phone App Control- I phone/Android	
Spring (For centre drive)	Heavy duty torsion spring of min thickness 8mm	
Bearings	Pre greased Sealed Bearings (SKF/UBL)	

# ROLLING SHUTTER DRIVE UNITS

**According to the Application  
Our Rolling Shutter Comes with 3 Types Of Drive Units**

**SIDE MOUNT TOP OPERATOR**

**CENTRE DRIVE OPERATOR**

**TUBULAR OPERATOR**

# ER -RMS SERIES SIDE MOUNT OPERATOR

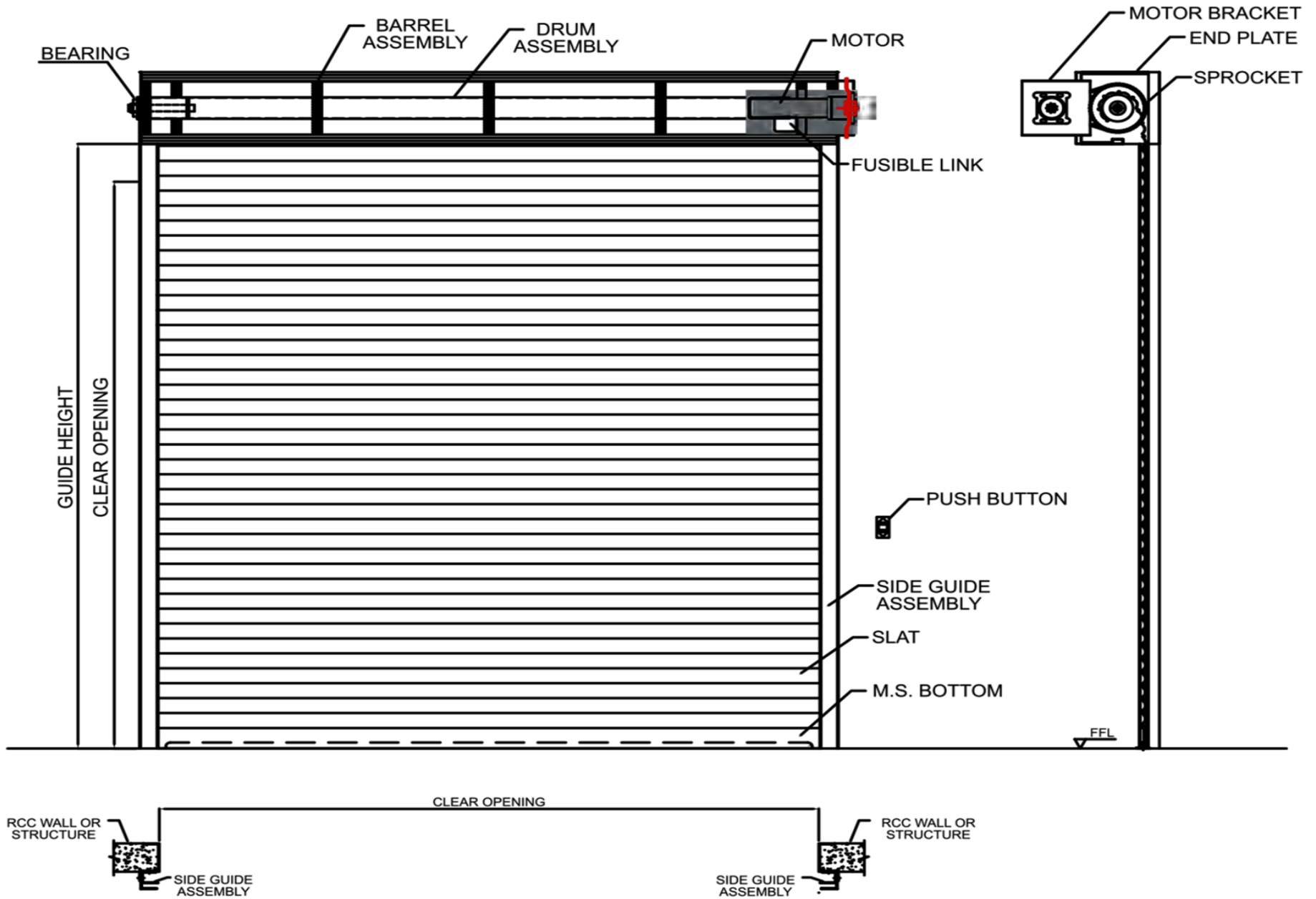
For Industrial, Commercial & Residential Rolling Shutters



wireless control



# SIDE MOUNT OPERATOR



## **ER-RMS is made up of**

- A worm gear
- An integrated safety brake
- Integrated limit switches
- An electric motor
- An emergency manual operation

The self-braking worm gear makes irreversible. No need for an electric brake.

---

## **Additional Details**

### **European Directives**

ER-RMS is made in accordance with product standards EN 13241-1 Doors and EN 12453 Safety for power operated shutters.

### **Overload Safety Factor**

Motor overload safety factor = 4 x the nominal motor amperage because the starting current of the ER-RMS can reach these levels for short periods.

### **Manual Operation**

The manual override devices (hand crank or handchain override) when power cuts-off, are based on a max strength of the end user of almost 40 kg. In big or extremely heavy shutters the manual override is only intended in down direction.

### **Duty Rating**

There is a relation between the weight of the shutter and the number of movements per hour so the motor duty rating varies according to the shutter weight.

### **Output Speed**

The maximum admissible speed depends on the construction and type of shutter. The admissible closing speed shall be tuned so as to allow the operating forces to comply with EN 12453.

### **Holding Torque**

The ER-RMS drive unit is capable of holding the weight of the shutter without slippage.

The holding capability is the admissible load bearing of the worm gear construction.

# TYPICAL

## SYSTEM COMPOSITION CENTRE DRIVE SYSTEM

1. Central Motor
2. Lamp
3. Photo Beam Sensor
4. Control Box
5. Key switch (O)
6. Spring box
7. Wi-Fi External Receiver (O)
8. Safety edge sensor(O)
9. D clutch Box

