

## SHROUD VENTILATORS

### SHROUD VENTILATOR (RIGHT)

#### Removal—C Model

Remove the kick pad. Remove the control handle and bracket and the control rod. Remove the ventilator door, door frame, and rubber gasket. Unhook the tension spring and detach the lid link. Then remove the control rod bracket and lever. Remove the insect screen and remove the lid and deflector.

#### Installation—C Model

Install the lid and deflector and the insect screen. Install the control rod bracket and lever; attach the lid link and tension spring. Install the rubber gasket, door, and door frame. Install the control handle and bracket and control rod, and install the kick pad.

### SHROUD VENTILATOR (LEFT)

#### Removal—C Model

Remove the kick pad. Remove the insect screen.

Unhook the tension spring and detach the lid link. Remove the ventilator control. Remove the lid and deflector.

#### Installation—C Model

Install the lid and deflector and the ventilator control, attaching the lid link and the tension spring. Install the insect screen and the kick pad.

### SHROUD VENTILATOR (RIGHT OR LEFT)

#### Adjustment—C Model

Two adjustments are provided for the lid and deflector. By loosening the two nuts, the lid and deflector can be centered in the opening by means of elongated slots in the hinge. On the left ventilator, the distance the lid and deflector swing open is controlled by the threaded link. On the right ventilator, elongated holes are provided in the flange of the instrument board so the control bracket may be shifted to secure the proper operation. The adjustment should be made so that the lid is tight against the seal when in the closed position.

## REAR QUARTER AND DOOR

### REAR QUARTER WINDOW ASSEMBLY

#### Removal

1. With the window in the down position, remove the rear seat cushion, arm rest, seat back, window regulator handle, upper trim panel chrome moulding, trim panel retaining screw and remove the trim panel.

2. Remove the sealing tape covering the inner quarter panel openings and remove the lower inspection hole cover plate (1, Fig. 88).



FIG. 88

- |                            |                             |
|----------------------------|-----------------------------|
| 1. Lower Cover Plate       | 3. Regulator Mounting Plate |
| 2. Window Regulator Screws | 4. Mounting Plate Screws    |

3. Remove the 3 window regulator retaining screws (2) from the rear quarter window regulator mounting panel (3).

4. Remove the 7 rear quarter window regulator mounting panel retaining screws (4).

5. Remove the inner quarter window weatherseal and remove the regulator mounting panel.

6. Slide the regulator arm from the window lift channel (1, Fig. 89) and remove the regulator assembly from the quarter panel.

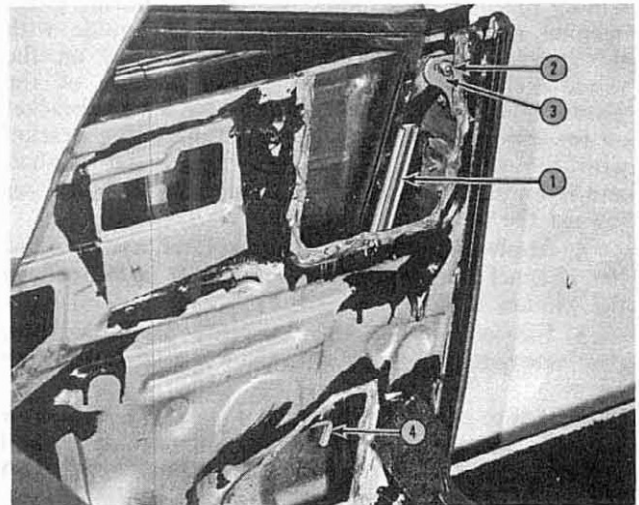


FIG. 89

- |                        |                           |
|------------------------|---------------------------|
| 1. Window Lift Channel | 3. Pivot Mounting Bracket |
| 2. Shoulder Bolt Nut   | 4. Upper Stop Arm         |

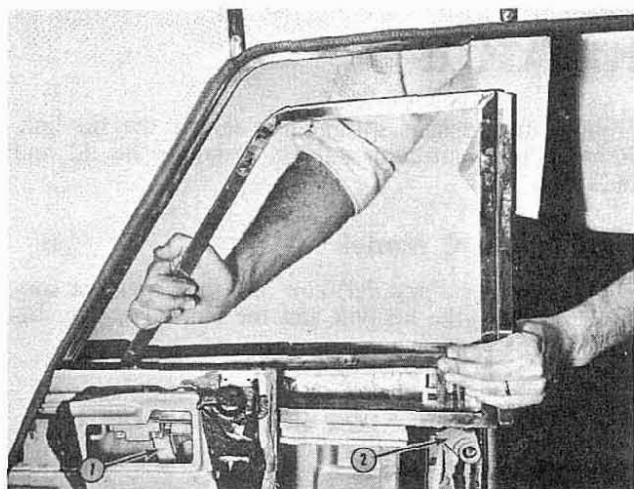


FIG. 90

1. Window Guide

2. Window Pivot Bracket

7. Remove the window pivot retaining shoulder bolt nut and plain washer (2) and remove the shoulder bolt and wave washer from the pivot mounting bracket (3).

8. Manually lift the window to the Up position and move the window assembly rearward slightly to disengage the rear channel finger guide from the curved window guide (1, Fig.90) and pull the window assembly forward and out through the cutout area of the quarter panel (See Fig.90).

9. Remove the outer weatherseals.

10. If desired, the curved window guide, upper window guide stop, and window pivot mounting bracket may now be removed.

## Installation

1. If removed during the disassembly procedure, install the curved window guide, upper window guide stop, and the window pivot mounting bracket.

2. Install the outer weatherseals.

3. Hold the window assembly parallel to the quarter panel opening. Then slide the window assembly through the window regulator mounting panel opening and engage the channel finger guide with the curved guide. The bracket (2, Fig.90) on the window channel is installed to the outside of the pivot mounting bracket (3, Fig.89). Attach the bracket on the window channel to the pivot mounting bracket with the shoulder bolt, wave washer, flat washer, and retaining nut. The head of the shoulder bolt faces toward the outer quarter panel.

4. Apply lubriplate to the regulator and window lift channel and engage the regulator arm stud in the window lift channel.

5. Fasten the regulator assembly to the window regulator mounting panel with the 3 regulator retaining screws.

6. Apply body sealer to the edge of the regulator mounting panel opening in the quarter panel and attach the regulator panel to the quarter panel with the 7 panel retaining screws.

7. Adjust the quarter window to the upper glass run and to the front door glass as outlined under 'Quarter Window Adjustments'.

8. Install the inner weatherseal.

9. Apply body sealer to the lower inspection hole cover plate, install the cover plate and reinstall sealing tape over the inner panel openings.

10. Reinstall the trim panel, upper trim panel chrome moulding, seat back, arm rest, regulator handle, and seat cushion.

## Adjustments

With the seats, arm rest, regulator handle, and trim panel removed the following adjustments can be made to the quarter window.

To adjust the quarter window fore and aft, loosen the pivot mounting bracket shoulder bolt retaining nut (2, Fig.89) and remove the entire window assembly as required to obtain the proper fit and good seal between the rear edge of the door glass and front edge of quarter window. Tighten the retaining bolt nut securely.

To adjust the window laterally (in and out) and/or up and down, loosen the two pillar post pivot mounting bracket retaining bolts located inside door opening and move the window in or out to provide proper fit and a good seal at the edge of the door glass. Move the window up or down to obtain the proper fit and a good seal at the upper run assembly. Tighten the bolts securely.

Parallel positioning of the quarter window to the rear edge of the door glass is controlled by the quarter window upper stop arm (4). The stop is located at the rear top edge of the quarter panel between the inner and outer quarter panels.

To obtain parallel positioning of the quarter windows to the door glass, loosen the regulator assembly retaining screws in the quarter window regulator panel and the window upper stop.

Adjust the window stop up or down, as required, until the window is in the desired location. Tighten the window upper stop retaining bolt securely.

Tighten the regulator retaining screws securely. If the window does not hold in the closed position, loosen the regulator retaining screws and rotate the regulator as necessary to secure proper engagement of the regulator arm in the window channel.

## REAR QUARTER UPPER WINDOW RUN

### Removal

1. With the window in the down position remove the rear seat cushion, arm rest, seat back, window regulator handle, upper trim panel chrome moulding, trim panel retaining screw and remove the trim panel.

2. With a pair of needle nose pliers and a dull putty knife, carefully remove the edge of the headlining from the retainer barbs (1, Fig.91) along the vertical section of the retainer.

3. Using a putty knife, separate the headlining and cotton padding from the headliner side backing panel (2). Then fold the headlining and padding back and tape the material to the rear windows to provide working room (See Fig.91).

4. Remove the headlining side backing panel retainer screws located along the top edge of panel

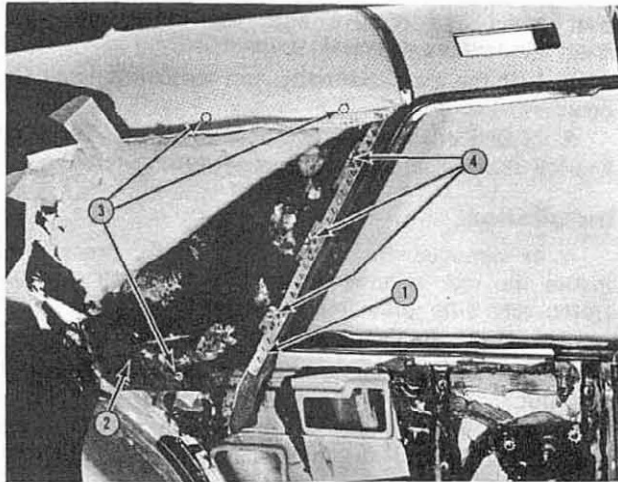


FIG. 91

- |                              |                               |
|------------------------------|-------------------------------|
| 1. Headlining Retainer Barbs | 3. Panel Retaining Screws     |
| 2. Side Backing Panel        | 4. Headlining Retainer Screws |

behind headlining lower edge of the backing panel in the approximate position as shown in Figure 4 and remove the backing panel.

5. Remove the small hex head sheet metal retaining screws (4) that attach the vertical section of the headlining retainer to the quarter panel, and remove the vertical headliner retainer.

6. Remove the vertical section of the windlace from the quarter panel windlace retaining tabs (1, Fig. 92).

7. Remove the sealing tape from over the access holes in the inner top panel (2).

8. Remove the (4) 'T' bolt nuts that retain the run assembly to the inner top panel. (3).

9. Working through the inner top panel access holes (2) remove the 4 Phillips head screws that retain the run assembly to the outer top panel reinforcement.

10. Remove the (3) upper run retaining screws that attach the run assembly to the top panel (4).

11. Remove sealing tape from over the rear access hole in the inner quarter panel (6), loosen rear quarter

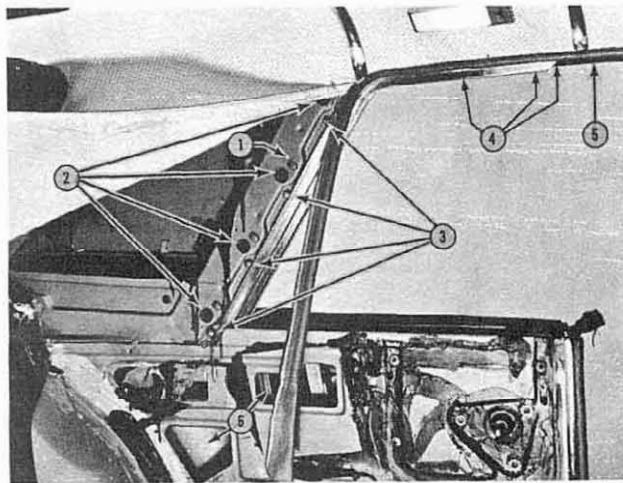


FIG. 92

- |                                     |   |
|-------------------------------------|---|
| 1. Windlace Retaining Tabs          | 5. Weatherstrip Retaining Screw Locations |
| 2. Access Holes for Retainer Screws | 6. Access Holes                           |
| 3. 'T' Bolts                        |   |
| 4. Upper Retaining Screw Location   |   |

window upper stop located near the bottom of the window run between the inner and outer quarter panels to provide working clearance when removing upper run assembly.

12. Disengage the top end of the run assembly from under the upper door window weatherstrip retainer (5) and remove the run assembly from the window opening.

## Installation

1. Apply sealer along the upper top surface of the run assembly.

2. Engage the front end of the run assembly under the rear edge of the upper door window weatherstrip retainer and place the run assembly in position in the window opening.

3. Install the 3 upper run retaining screws. Working through the access holes install the 4 Phillips head retaining screws that secure the run to the outer top panel. Install the 4 'T' bolt nuts that attach the run to the inner top panel.

4. Install the quarter window upper stop and adjust the stop to provide correct parallel alignment of the quarter window and the door glass. Reinstall sealing tape over the quarter panel access hole at the quarter window upper stop location.

5. Place sealing tape over the inner top panel access holes at the rear vertical section of the run.

6. Install the windlace under the inner panel retaining tabs. Install the headlining side backing panel and retaining screws. Position the vertical headlining retainer and install the retaining screws.

7. Using a dull putty knife, tuck the headlining between the headlining retainer and the body. Carefully press or drive the edge of the headlining and retainer in against the quarter panel all along the windlace until the headlining and windlace assume a neat appearance.

8. To provide an effective water seal, apply colored eyebrow sealer along the entire length of the outside of the run assembly where it joins the top panel.

9. Install the quarter trim panel, upper trim panel chrome moulding, seat back, seat cushion, arm rest, and window regulator handle.

## DOOR WINDOW REGULATOR

### Removal

1. Remove the door remote control handle, window regulator handle, door lock push rod knob, garnish moulding and trim panel.

2. Remove the sealing tape from the access hole at the bottom of the door.

3. With the window in the down position, remove the retaining clips and washers from the regulator studs and disengage the regulator arm from the lift channel.

4. Manually lift the glass and by means of a wedge hold the window in the up position.

5. Remove the four (4) window regulator retaining screws, rotate the regulator assembly counter-clockwise until it clears the front window channel and lift the regulator out through the access hole.



## Installation

1. Position the regulator within the door and install the regulator retaining screws.
2. Remove the wedge and lower the glass.
3. Engage the regulator arm in the window lift channel and install the retaining washers and clips.
4. Reinstall the sealing tape over the lower access hole.
5. Install the trim panel, garnish moulding, door lock push rod knob, window regulator handle and door remote control handle.

## Adjustment

To properly align the door glass with the front window guide and the door opening, loosen the regulator adjusting nut and turn the glass as required. Tighten the adjusting nut.

## DOOR GLASS

### Removal

1. Remove the door remote control handle, window regulator handle, door lock push rod knob, garnish moulding and trim panel.
2. Remove the two screws that hold the window stop to the top of the ventilator frame and remove the stop.
3. Remove the sealing tape covering the inner door panel openings.
4. With the window in the down position, remove the retaining clips and washers from the regulator studs and disengage the regulator arm from the lift channel.
5. Remove the door frame rear stop bolt and nut.
6. Lower the window to the bottom of the inner

door panel and remove both the inner and outer door window weatherseal strips.

7. Lift the glass manually and remove it from the door.

8. If desired, the rear window guide and the door window frame rear stop plate, may now be removed.

### Installation

1. If removed during the disassembly procedures, install the rear window guide and the door window frame rear stop plate.

2. Install the window glass in the door.
3. Install the door window frame rear stop bolt and nut.
4. With the window at the bottom of the inner door panel, install the inner and outer weatherseal strips.
5. Engage the regulator arm in the window lift channel and install the retaining washers and clips.
6. Reinstall the sealing tape over the inner door panel openings.
7. Install the window stop at the top of the ventilator frame.
8. Install the trim panel, garnish moulding, door lock push rod knob, window regulator handle and door remote control handle.

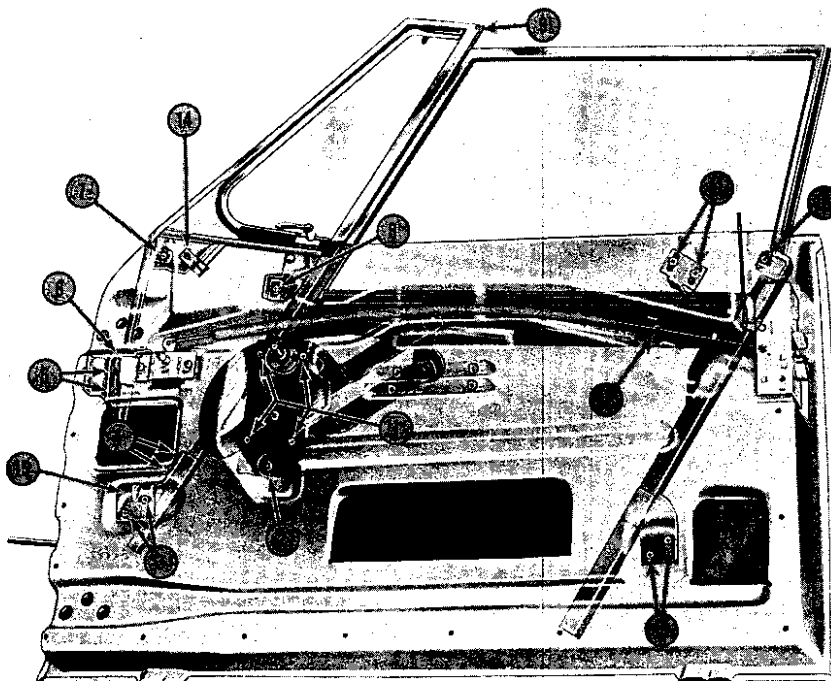
### Adjustment

The door window rear guide can be adjusted by loosening the rear guide upper screw (at top of guide) and the two rear guide lower bolts (at bottom of door). By shifting the guide in the elongated slots in the door inner panel, adjust so that the window has the greatest ease of movement during its travel.

To properly align the door window in the front guide, loosen the regulator adjusting nut and center the window with the regulator. Tighten the nut.

FIG. 93

1. Regulator Screws
2. Regulator Adjusting Nut
3. Ventilator Rear Bracket-to-Door Bolts
4. Ventilator Rear Bracket-to-Run Nuts
5. Ventilator Front Bracket-to-Door Screws
6. Ventilator Front Bracket-to-Ventilator Frame Nut
7. Ventilator Frame-to-Door Screw
8. Ventilator Frame-to-Door Screw
9. Stop Screws
10. Rear Guide Upper Screw
11. Rear Stop Plate
12. Rear Stop
13. Rear Guide Lower Bolts
14. Adjustment Screw
15. Ventilator Rear Mounting Bracket



## DOOR VENTILATOR ASSEMBLY

### Removal

1. Remove the door glass as outlined under Door Glass Removal.
2. Remove the top ventilator frame-to-inner door panel bolts (7 and 8, Fig.93).
3. Inside the door panel remove the ventilator front bracket-to-ventilator frame nut (6).
4. Remove the front window channel stud nuts (4) from the ventilator rear mounting bracket (15) and disengage the studs from the bracket.
5. Carefully lift the ventilator assembly from the door panel.
6. If desired, the ventilator front mounting bracket (5) and the ventilator rear mounting bracket (15) may now be removed.

### Installation

1. If removed during the disassembly procedures install the ventilator front mounting bracket and the ventilator rear mounting bracket. NOTE: The effort required to open or close the ventilator window can be set by tightening or loosening the adjustment screw (14, Fig.93). This adjustment must be made before the vent assembly is installed in the door panel.
2. Install the ventilator assembly in the door panel.
3. Place the studs in their brackets and install the nuts and washers.
4. Install the top ventilator frame-to-inner door panel bolts.
5. Install the door window glass as outlined under Door Glass Installation.

### Adjustment

Adjustments are provided to properly align the ventilator assembly within the door opening. The adjustments should be performed so that the lip of the windshield post weatherseal contacts the ventilator frame assembly along its entire exposed length.

Adjustments are made by means of elongated holes in the ventilator assembly, in the brackets, and in the door panel. It may be necessary to shim out the brackets if additional adjustments are required to properly position the ventilator assembly.

To move the assembly forward or rearward, loosen the ventilator frame-to-door bolts (7 and 8, Fig.93) the ventilator front bracket-to-ventilator frame nut (6) and ventilator rear bracket-to-door bolts (3). So that the window may shift with the ventilator assembly, loosen the rear guide upper screw (10) and the rear guide lower bolts (13). Shift the ventilator assembly fore or aft as required. Be sure that the lip of the windshield post weatherseal contacts the ventilator frame along its entire exposed length. Tighten the retaining screws and nuts and check the adjustment.

To check the adjustment, open the door and roll the window all the way up. Check to see that the window does not force the ventilator frame forward. If the ventilator is forced forward, adjust the door

window rear stop plate (11). Close the door and check the fit of the weatherseal against the ventilator frame. The ventilator frame must not pinch or crimp the weatherseal as the door is closed. If the proper fit of the frame against the weatherseal cannot be secured, it may be necessary to reposition the weatherseal retainer and, in some cases, shim out the retainer. Repositioning of the retainer is made possible by the elongated slots at the retaining screws.

To correct the forward tilt, top too far forward, loosen the ventilator frame-to-door bolts (7 and 8) and the rear guide upper screw (10) and rear guide lower bolts (13), ventilator rear bracket-to-door bolts (3) and remove the ventilator front bracket-to-ventilator frame nut (6). Tilt the assembly rearward as required while at the same time shifting the assembly forward to properly position it against the windshield post weatherseal. Then tighten the screws and bolts (7, 8, 3, 10) securely. Loosen the two front ventilator bracket-to-door screws (5) and shift the ventilator frame front bracket upward, cornering the bracket against the door face and the ventilator frame. Tighten the ventilator front bracket-to-door screws (5) install the nut (6) that holds the ventilator frame to the front bracket and tighten securely.

To correct for rearward tilt, loosen the ventilator front bracket-to-door screws (5), rear guide upper and lower screws and bolts (10 and 13), ventilator rear bracket-to-door bolts (3) and ventilator frame-to-door bolts (7 and 8) and front bracket nut (6) and shift the assembly upward and rearward as required. Tighten the screws and bolts (7, 8, 3, 10 and 13); then corner the front bracket and tighten the front bracket nut (6) and front bracket-to-door screws (5).

To facilitate adjustment, loosen but keep a slight tension on the ventilator frame-to-door panel bolt (8) so that the whole assembly does not shift in all directions, resulting in need of complete adjustment.

If difficulty is encountered in acquiring proper adjustment, first check for improperly positioned front weatherseal and adjust inward or outward from the body. Next, remove the windshield post weatherseal and retainers, and check the cowl windshield post and roof panel corner for interference.

The height of the assembly is adjusted by raising or lowering the ventilator frame front and rear brackets on the panel screws. Loosen the regulator adjustment nut (2) and ventilator front bracket-to-door screws (5) and the ventilator frame-to-door panel bolts (7 and 8) and move the assembly as required. When lowering the assembly, be sure that the lower ventilator weatherstrip is not pulled away from the top of the door. In adjusting the ventilator frame assembly for height, it may also be necessary to move the assembly forward or rearward to maintain a proper seal with the windshield post weatherseal.

If the ventilator frame has an inward or outward tilt, the assembly may be adjusted by shifting the lower end of the ventilator frame on the rear bracket. Loosen the ventilator rear bracket-to-run nuts (4). Move the ventilator frame on the bracket as required to correct the tilt condition. Then move the door window rear guide on the bracket to maintain the alignment between the ventilator assembly and the door window.