




**A SENSE OF FREEDOM  
IN EVERY DESIGN**



**WOODEN & MARBLE**







# WOOD DEN

## **WOOD & RUSTIC WOOD**

Nature and its vividness are the inspiration for FLEXIBOND wooden wonders. Wooden series is available in various natural wood look finishes. FLEXIBOND Panels are pre-coated using photosensitive fluorocarbon agents and are subsequently cured using Ultra Violet rays. This helps panels gain improved durability, excellent surface finish, zero defects, stronger surface bond, and enhanced impact resistance.



The logo for FLEXIBOND is centered in the upper half of the page. It consists of the word "FLEXIBOND" in a bold, white, serif font, set against a dark blue rectangular background. A small registered trademark symbol (®) is located at the top right of the word. Below the blue rectangle, there is a thin horizontal line that is red on the left and white on the right, followed by the text "AN ATTACHMENT" in a small, white, sans-serif font.

## **ABOUT US**

FLEXIBOND is a leading aluminium composite panel manufacturing brand since its inception in the year 2002. We have been dominating the industry with our innovative products such as PVC/WPC foam board, WPC solid doors, WPC solid door frames, and acrylic solid surface. Our organization is proud to stand on the pillars of hard-earned goodwill. FLEXIBOND has created a rich legacy for itself with an avant-garde product line that has distinctive products used for interior, exterior, facade, furniture, signage, and many other applications. These products are highly admired and recommended as they stand for their bankable features and salient product properties.

All these products are developed in an eco-friendly manner. We also contribute towards sustainable development which is why our company is accredited with ISO 9001: 2015, ISO 14001: 2015 and OHSAS 18001: 2007. Besides, we are also given the honour of being a part of the Indian Green Building Council.





Brazilian Sucupira FB-821 RW



Country Oak FB - 822 RW



Knotty Wood FB - 823 RW



Cuban Chestnut FB - 824 RW





African Ipe

FB - 825 RW







Saw Cut Wood FB - 817



Antique Wood FB - 818



Finland Cherry FB - 807



Burn Walnut FB - 816



Mexican Teak FB - 801



Canadian Cherry FB - 802





California Walnut      FB - 815



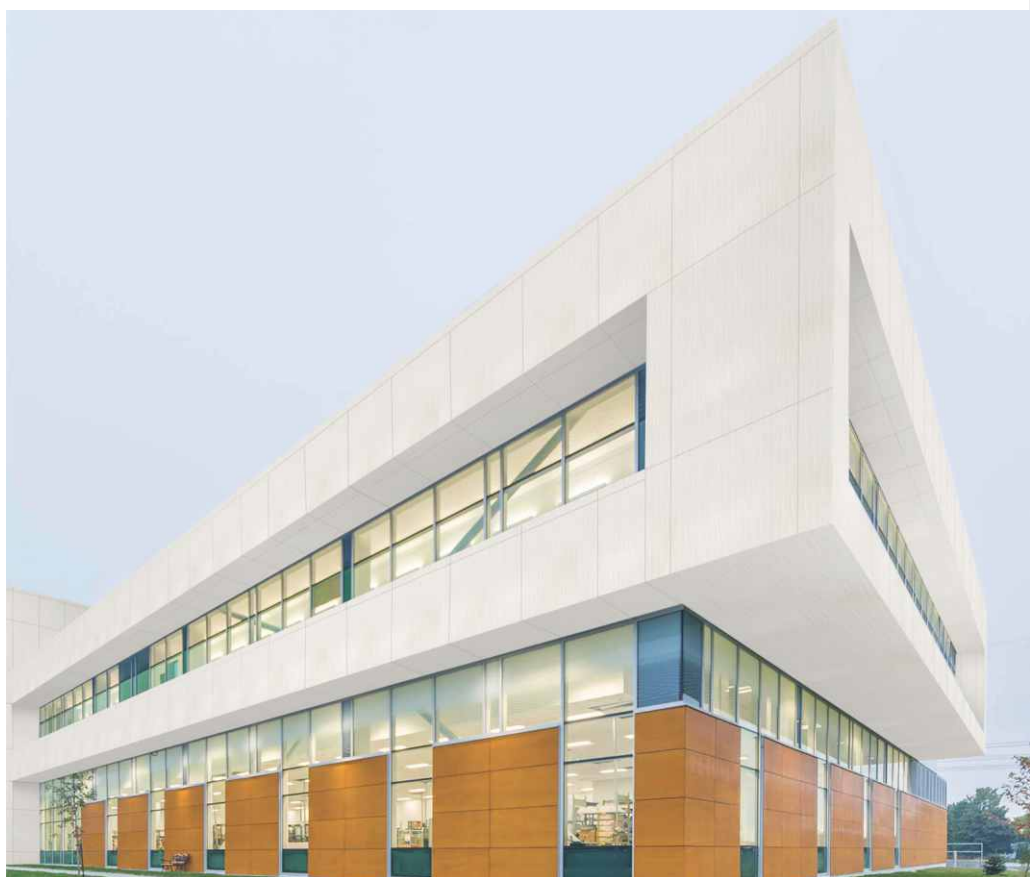
Laurel Wood      FB - 813



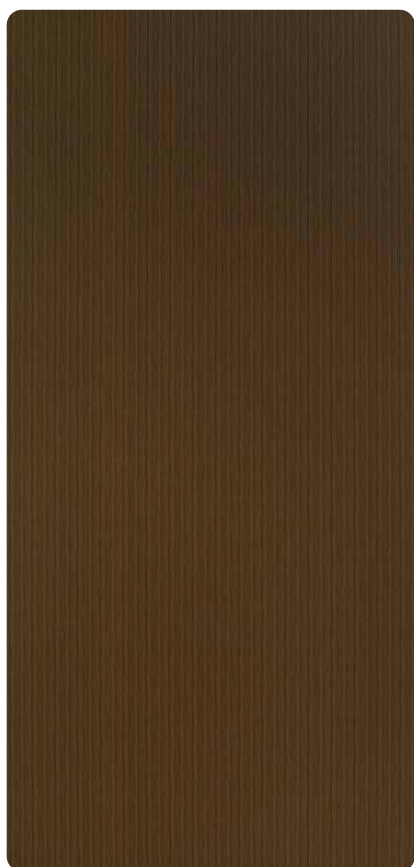
Ebony      FB - 808



Gemini Oak      FB - 809







Golden Teak

FB - 812



Burma Teak

FB - 814



Brazilian Walnut

FB - 804



Sisam Wood

FB - 810

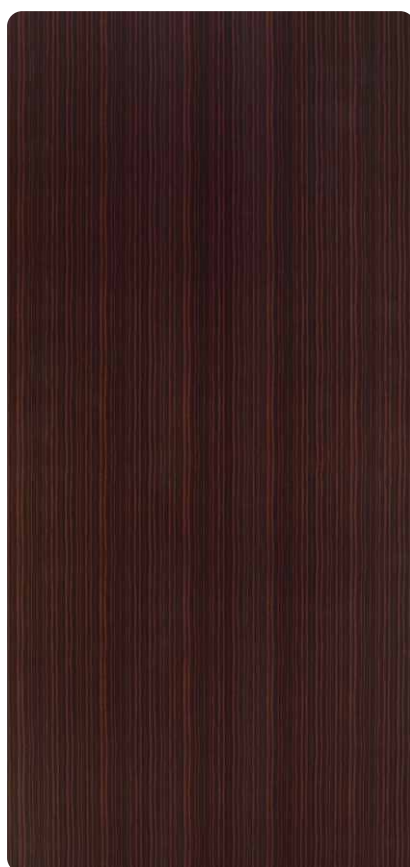




Greenland Walnut FB - 803



Rose Wood FB - 811



African Sapeli FB - 805



Congo Sapeli FB - 806





**M A R  
B L E**



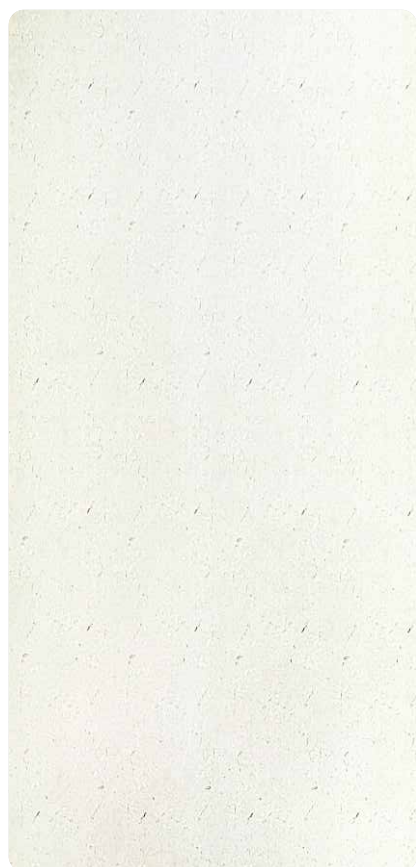


## **MARVELOUS MARBLE SERIES**

---

No one is immune to the affection of natural marble, such is their aura and appeal. However, they are scarce, expensive and difficult to maintain. Hence, to simplify the tougher part, we are here with Marble Finish sheets. Right from smooth surfaces to the rowdy patterns, you get it all here. It stands for endurance, authenticity and intrinsic value. The panel reflects light in a magical vibrant way ranging from rough to smooth. The natural and vibrant effects of these coated panel sheets are a perfect replacement for real stone, as it allows for lower costs of construction, ease of handling and maintenance of the buildings.





Italian Crema

FB - 701



Travertine Crema

FB - 702



Italian Black

FB - 708



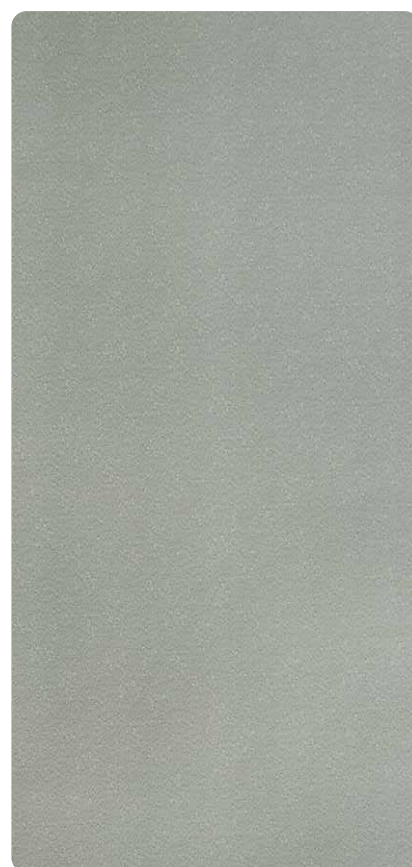
Onyx Green

FB - 706



Emperador Dark

FB - 705



Forest Green

FB - 707





Italian Brown

FB - 709



Brown Fire

FB - 710



Statuario

FB - 711



Dove Grey

FB - 721







DISCOVER  
THE JOY OF SMOOTH  
CRAFTSMANSHIP.





# Technical Specification

## Panel’s Physical Properties

Product Grade	Panel Thickness	Coil Thickness	Core Thickness	Top Coil Coating Thickness	Back Coil Coating Thickness
FLX-450-Platinum	4.0 mm	0.50 mm	3.0 mm	26 μ ± 2 μ Beckers/PPG Germany	7 μ ± 2 μ Primer Coat
FLX-425-Gold	4.0 mm	0.25 mm	3.5 mm	26 μ ± 2 μ Beckers/PPG Germany	7 μ ± 2 μ Primer Coat
FLX-325-Gold	3.0 mm	0.25 mm	2.5 mm	26 μ ± 2 μ Beckers/PPG Germany	7 μ ± 2 μ Primer Coat

## Product Tolerance

Width	± 2.0 mm	Coil Thickness	± 0.02 mm
Length	± 4.0 mm	Panel Thickness	± 0.20 mm
Squareness	Maximum 5 mm	Bow	Maximum 0.5 % of width and/or Length

Surface defect : Surface shall not have any irregularities such as roughness, bucking and other imperfections.

## Standard Dimension

Thickness: 3 mm & 4 mm

Size: 1220 x 2440 mm | 1220 x 3050 mm | 1220 x 3660 mm

[Special Thickness and Sizes Available on Request]

FR GRADE MATERIAL  
AVAILABLE ON REQUEST



## HPL [available]

High-pressure laminate [HPL] is manufactured using aluminium coil with double layered PVDF/Lumiflon coating that is resistant to dust. It has a polyethylene core that makes it resistant to water, fungus and termite. It is more durable and efficient than wood in terms of its long-lasting lifespan and charm.

## Important Note

To avoid possible reflection differences, it is recommended to install the panel in the same direction as marked on the protective peel-off film. Color may vary from batch to batch, kindly ask for a sample. For installation, please follow the international standards.

Recyclable

Environment Friendly

Interior / Exterior

UV Protection

PVDF Coating

Lead Free

10 years Warranty



## HEAD OFFICE

### AHMEDABAD

40/A, Panchratna Industrial Estate, B/h. Vivek Steel, Changodar-382 213,  
Ta. Sanand, Dist. Ahmedabad.[Gujarat] India. | +91 92280 25446 | info@flexibond.com

## NETWORK

### DELHI

Lower Ground Floor b-24, Okhla  
Industrial Area Phase-2, New Delhi,  
Southdelhi - 110020

### CHANDIGARH

Village Pabhat, Ground Floor Zirakpur  
Tehsil Derabassi, Dis-Mohali Sas Nagar  
Punjab-140603

### JAIPUR

E-108, Road No.07, V.K.I. Area,  
Opp Lal Golden Transport,  
Jaipur-302013

### KOLKATA

5, Warshi Corporatio Compound,  
Hide Road, Police Station West  
Port, Kolkata-700043

### GUWAHATI

Near HDFC Bank Ltd.,  
Maligaon Gate No:1,  
Guwahati-781011

### RANCHI

Ground Floor, Kedia Square,  
Baralal Street, Upper Bazar  
Ranchi-834001

### INDORE

Surevey No.21 SDA Compound,  
Lasudiya Mori, Dewas Naka,  
Indore-452010

### RAIPUR

Jhulelal Chowk, Nahar Para,  
Raipur [Chhattisgarh]  
India-492001

### SURAT

Plot No. 31 & 32b Ground Floor S K  
Industrial Society-2 Nr. Sosyo Circle  
Udhana Magdala Road, Surat - 395017

### MUMBAI

9, Tapo Commercial Premises,  
Ram Mandir Road, Goregaon  
West Mumbai-400104

### PUNE

Shop No.121 Prestige Point,  
283 Shukrawar Peth,  
Pune-411002

### NAGPUR

Plot No. 47 Garoba Maidan Shastri  
Nagar Chowk Bhandara Road,  
Nagpur-440008

### CHENNAI

No.11, Janaki Ammal Street,  
Nr. Kamrajar Colony 9th Street,  
Kodambakkam, Chennai-600024

### HYDERABAD

No. 8-7-47 R.R. Nagar Old  
Bowenpally, Secunderabad-500011  
Hyderabad.

### ERNAKULAM

71/2686-2689 Keerthinagar,  
Deshabhimani Road, Elamakkara,  
Ernakulam-682026

### BENGALURU

No: 18 SY No.80/1, 1st Cross Road,  
Someshwara Nagar, Mahalakshmiapuram,  
Bengaluru-560022

### VADODARA

04 - Parmatma Park,  
Chaani Jakatnaka Circle,  
Vadodara - 390024

### RAJKOT

Indrajit Complex - 3,  
Opp. Shree Ram PUC,  
Godown Road, Rajkot



**UMIYA FLEXIIFOAM PVT. LTD.**

+91 02717 298946 | +91 92280 25446

info@flexibond.com

www.flexibond.com



Follow us on:

