



# **OR30 SERIES** **SINGLE AXLE OUTSIDE RAIL HOIST**

All GALFAB Single Axle roll off hoist systems have outboard supported side rollers and are built in a jig for consistency and accuracy.

## STANDARD FEATURES

- 8 x 4 x 3/8" Main Frame tube
- 1" Spring Loaded Container Locks
- 4 x 3 x 3/16" Sub Frame tubes for chassis CA up to 168"
- 3 x 2 x 1/4" Sub Frame tubes for chassis with a CA greater than 168"
- All Working Points Greaseable
- 2 1/2" Diameter Lower Lift Cylinder Shafts
- 10" Diameter Cable Sheaves
- 3/8 inch x 3 inch winch cylinder rod covers
- 3 Outboard supported rollers per side
- Container long sill supports on rear of hoist mainframe
- Inside and Outside Controls
- LED Lighting System
- 20 gallon Hydraulic Reservoir with sight and temperature gauge for CA lengths up to 168"
- 48 gallon Hydraulic Reservoir with sight and temperature gauge for CA lengths greater than 168"
- 25 Micron Filtration
- Hoist Up Alarm
- Back Up Alarm
- 5/8" cable with pear eye for CA lengths up to 168"
- 7/8" cable with heavy duty swivel eye for CA lengths greater than 168"
- Rigid DOT Bumper

## OPTIONAL FEATURES

- "The Hooker" Hold On System
- Ratchet Tie Down Straps
- Auxiliary Stops
- Work Lights
- Behind Cab and Oversize Oil Tanks
- Tool Boxes
- Poly or Steel Fenders
- Tarping Systems
- Pintle Hook
- Front Mount Pump
- PTO
- Drop Shaft
- On-Board Scale Systems
- Rear View Camera Systems
- Additional outboard supported side rollers
- Also available with an extendable tail



**"The Hooker"**  
Container  
Securement System



**Auxillary fold down  
stops**



**Hydraulic Reservoirs**



**Tool Boxes**



**Poly, Steel &  
Aluminum Fenders**

Shop all replacement parts at:

**GALFAB.com**



Visit our website: [GALFAB.com](https://www.galfab.com) | Follow us on social media



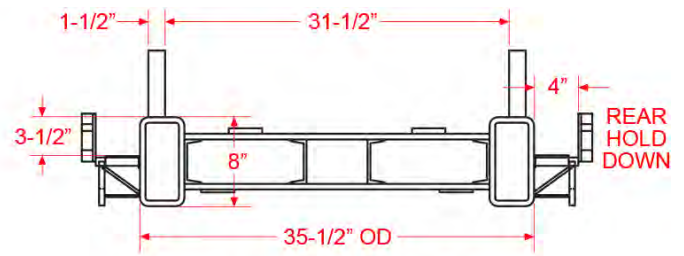
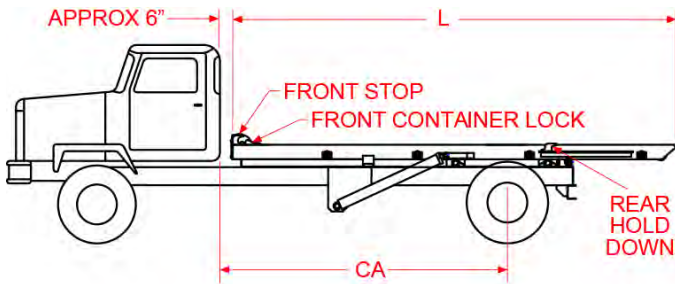
| Call Today: 574-946-7767

# OR30 SERIES MODELS

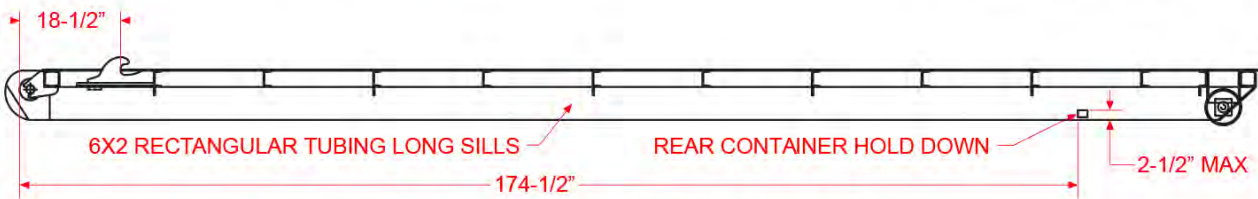
Model	Rated Cap.	CA	Hoist Length	Rear Hinge Diameter	Main Frame Tube	Upper Lift Shaft	Sub Frame Tube	Recommended Container Length
OR30124S046	30,000#	124"	196"	2"	8"	1 1/4"	4"	12' – 16'
OR30138S054	30,000#	138"	227"	2"	8"	1 1/4"	4"	14' – 16'
OR30156S054	30,000#	156"	245"	2"	8"	1 1/4"	4"	14' – 16'
OR30168S066	30,000#	168"	257"	2"	8"	1 1/4"	4"	16' – 20'
OR30187S066	30,000#	187"	276"	2"	8"	1 1/4"	4"	18' – 22'

\* Cycle Times are Factory developed and controlled by PTO output, oil viscosity, human and mechanical efficiency, and may vary accordingly.

CAUTION: This Equipment Should be Operated by Properly Trained Personnel. Improper Use, Misuse, or Lack of Maintenance Could Cause Injury to Persons or Property. Photos used in this brochure are illustrative only. We reserve the right to make changes at any time without notice. Information contained within this literature is believed to be the most accurate available at the time of printing.



HOIST FRAME DETAILS



OUTSIDE RAIL CONTAINER REQUIREMENTS