

ASSESSMENT AREAS OF ANALYSIS

ACTIVE DIRECTORY

- Domain/Forest Configuration
- Event Logging and Auditing
- User Configuration and Group Membership
- Group Policies
- Network Services (DHCP, DNS)

NETWORK ENVIRONMENT

- LAN/WAN/Internet
- Network Diagram
- Configuration
- Performance
- Connectivity
- Hardware
- Software/Firmware

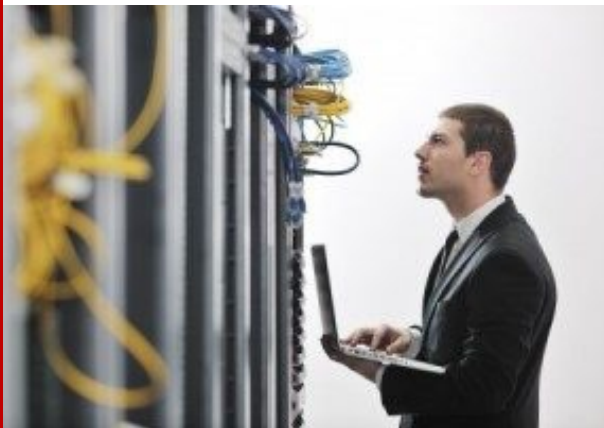
VIRTUALIZED ENVIRONMENT

- Configuration
- Performance
- Host/VM Analysis
- Storage
- Virtual Network

ENDPOINTS

- Hardware
- Operating Systems
- Configuration
- Patching
- Installed Applications

IT Infrastructure Health Assessment



- Identify deviations from current best practices.
- Pinpoint performance issues and bottlenecks.
- Document the environment to uncover security and configuration concerns.
- Receive an actionable, remediation plan and a short term and long term go-forward roadmap to address discovered issues.

The Problem

Your infrastructure was likely set up years ago.

It was initially setup according to existing best practices and the workload as it existed at that time.

Things change. Hardware ages. Workloads increase (never decrease). Security has become more of an issue. You're likely utilizing more and more hosted or remote applications.

IT staff have difficulty finding the time to keep the environment optimized. With a seemingly never ending list of new applications to roll-out, the squeaky wheel gets the grease. Things often get overlooked because of limited resources..

You're debating the capital expense to upgrade the environment (like your hardware vendors want) but you're just not sure if that's necessary.

The Solution

An IT Infrastructure Health Assessment!

To know where you should go, first you need to have a solid understanding on where you're at.

We perform a comprehensive review of your environment: inspecting software and hardware configurations, documenting your infrastructure, and collecting key performance metrics (over a 2-week period) across the environment.

The collected data is then analyzed and compared to current best practices to produce a recommendation list and go-forward roadmap with a focus on utilizing your existing infrastructure investment.

ASSESSMENT AREAS OF ANALYSIS (CONTINUED)

STORAGE ENVIRONMENT

- Hardware
- Performance
- Configuration
- Utilization

BACKUPS AND REPLICATION

- Overview
- Methodology
- Target(s)/Destination(s)
- Performance

VIRTUAL DESKTOP INFRASTRUCTURE (VDI)

- Platform
- Connectivity
- Pool Configuration
- VM/App Configuration
- Performance

RECOMMENDATIONS AND REMEDIATION ROADMAP

- Actionable
Recommendations
favoring optimization
over capital
expenditures
- Short Term/Long Term
Roadmap
- Difficulty/Cost of
Implementation
- Impact (Manageability,
Stability, Security,

Assessment Overview



We begin with an onsite visit to meet with key IT personnel and perform a walk-thru of the environment to get a physical understanding of your existing infrastructure.

With remote access, we install monitoring tools to gather configuration and performance metrics. The data collection period extends for at least 2 weeks to provide a solid representation of the environment.

With data collection complete, we analyze the information gathered to compare against current best practices and prepare a list of recommendations and a go-forward roadmap.

A report outlining the findings along with the recommendations and roadmap is provided and reviewed at a scheduled follow-up meeting.

Assessment Highlights

- Comprehensive analysis of all major IT infrastructure components.
- Extensive performance monitoring over a 2-week period to obtain a real understanding of the environment.
- Recommendations designed to optimize and protect your existing environment with capital recommendations only when necessary.
- Actionable, remediation plan that can be addressed by staff IT.
- Detailed roadmap of all remediation items for short term and long term resolution planning.

SERVICES AVAILABLE

IT Infrastructure Health Assessment

System Optimization Services

Post-OEM (Third Party) Maintenance