

viteria ad alta resistenza hi-tensile strength screws and nuts

-  GREZZO PLAIN
-  ZINCATO BIANCO WHITE Z.P
-  ZINCATO GIALLO YELLOW Z.P
-  ZINCATO A FUOCO H.D.G

la gamma / the range

VITI TESTA ESAGONALE HEX HEAD SCREWS

	UNI	DIN	ISO	
8.8	5737	931	4014	
10.9	5737	931	4014	
12.9	5737	931	4014	
8.8	5738	960	8765	
10.9	5738	960	8765	
8.8	5739	933	4017	
10.9	5739	933	4017	
12.9	5739	933	4017	
8.8	5740	961	8676	
10.9	5740	961	8676	
10.9	5712	6914	EN14399	

VITI TESTA ESAGONALE US STANDARD US STANDARD HEX HEAD SCREWS

ANSI			
UNC	B18 2.1		
UNF	B18 2.1		

DADI AUTOBLOCCANTI SELF LOCKING NUTS

	UNI	DIN	ISO	
8/6S	7473	982	7040	
10/8G	7473	982	7040	
				passo grosso course pitch
8/6S	7473	982	10512	
10/8G	7473	982	10512	
				passo fine fine pitch
8/6S	7474	985	10511	
10/8G	7474	985	10511	
				passo grosso course pitch
8/6S	7474	985	10513	
10/8G	7474	985	10513	
				passo fine fine pitch
8		980		
10		980		

DADI TRIBLOCK
TRIBLOCK NUTS

VITI TESTA CILINDRICA CON CAVA ESAGONALE SOCKET HEAD CAP SCREWS

	UNI	DIN	ISO	
8.8	ex 5931	ex 912	4762	
8.8	ex 5932	ex 912	4762	
10.9	ex 5931	ex 912	4762	
12.9	ex 5931	ex 912	4762	
8.8		6912		
8.8	9327	7984		
12.9				

VITI TESTA CILINDRICA BOMBATA CON CAVA ESAGONALE BUTTON HEAD SOCKET SCREWS

	UNI	DIN	ISO	
10.9			7380	

RONDELLE WASHERS

	UNI	DIN	ISO	
HV100	6592	125/A	7089/7091	
HV100	6593	9021	7093/7094	
HV430	1751	127/B		
HV350	8842	6798 A/J		
HV430		7980		

RONDELLE ELASTICHE ONDULATE WAVE SPRING WASHERS

	UNI	DIN	ISO	
HV430	9192A	137A		
HV430	9192B	137B		

VITI TESTA SVASATA PIANA CON CAVA ESAGONALE COUNTERSUNK HEAD SOCKET SCREWS

	UNI	DIN	ISO	
8.8	ex 5933	ex 7991	10642	
10.9	ex 5933	ex 7991	10642	

GRANI CAVA ESAGONALE HEXAGON SOCKET SET SCREWS

	UNI	DIN	ISO	
45H	5923	913	4026	
45H	5927	914	4027	
45H	5929	916	4029	
45H	5925	915	4028	

DADI ESAGONALI HEX NUTS

	UNI	DIN	ISO	
10	5713	6915	EN14399	
8/6S	5587		4033	
10/8G	5587		4033	
				passo grosso course pitch
8/6S	5587		8674	
10/8G	5587		8674	
				passo fine fine pitch
8/6S	5588	934	4032	
10/8G	5588	934	4032	
				passo grosso course pitch
8/6S	5588	934	8673	
10/8G	5588	934	8673	
				passo fine fine pitch
04	5589	936	4035	
05	5589	936	4035	
				passo grosso course pitch
04	5589	936	8675	
05	5589	936	8675	
				passo fine fine pitch
10	5535	6334		

DADI A CORONA HEX CASTLE NUTS

	UNI	DIN	ISO	
5	5594	935		
5	5593	935		

viteria a bassa resistenza ed articoli tecnici med and low strength screws and technical articles

VITI TESTA ESAGONALE
HEXAGON HEAD SCREWS

UNI	DIN	ISO
4.8	5737	931
4.8	5739	933

BULLONI TESTA ESAGONALE FLANGIATA
HEX FLANGE BOLTS

UNI	DIN	ISO
4.8	5541	6921
8.8	5541	6921
10.9	5541	6921

VITI PER METALLO
MACHINE SCREWS

UNI	DIN	ISO
6107	84	1207

VITI PER METALLO
PHIL. MACHINE SCREWS

UNI	DIN	ISO
4.8	7687	7985

VITI ACCIAIO AUTOFORMANTI
TRILOBULAR SCREWS

UNI	DIN	ISO
C15	8110	7500-D

VITI PRIGIONIERE
STUD BOLTS METRIC THREAD

UNI	DIN	ISO
8.8	5911	

UNI	DIN	ISO
6109	963	2009
6110	964	2010

UNI	DIN	ISO
4.8	7688	965
4.8	7689	966

UNI	DIN	ISO
C15	8112	7500-C

VITI E DADI AD ALETTE
WING SCREWS AND NUTS

UNI	DIN	ISO
4.8	5449	316
4.8	5448	315

GHIERE AUTOBLOCCANTI
SLOTTED ROUND NUTS

UNI	DIN	ISO
4.8		

BARRA FILETTATA RULLATA
THREADED RODS

UNI	DIN	ISO
4.8	6547	975
8.8	6910	976

ASTM-B7

UNI	DIN	ISO
C15	8113	7500-M
C15	8114	7500-N

DADI ESAGONALI
HEX NUTS

UNI	DIN	ISO
8	5721-69	1587

GHIERE DI BLOCCAGGIO
SLOTTED ROUND NUTS

UNI	DIN	ISO
5.5	981	

ROSETTE DI SICUREZZA
TOOH WASHERS

UNI	DIN	ISO
C70	5406	

DADI IN GABBIA
CAGE NUTS

UNI	DIN	ISO
8		

UNI	DIN	ISO
8	986	
8	6923	4161

GOLFARI
BOLTS/NUTS

UNI	DIN	ISO
2947	580	
	582	

ANELLI DI ARRESTO
RETAINING RINGS

UNI	DIN	ISO
C70	7435	471
C70	7437	472

SPINE
PINS

UNI	DIN	ISO
C70	6873-71	1481
C70	6875	7343

UNI	DIN	ISO
8	6926	
8	6927	

COPIGLIE
SPLIT PINS

UNI	DIN	ISO
3.6	1336	94

DISCHI ELASTICI
DISC SPRINGS

UNI	DIN	ISO
HRC	4653	

MOLLE A TAZZA
DISC SPRINGS

UNI	DIN	ISO
HRC 43/52	2093	

INGRASSATORI
NUZZLES

UNI	DIN	ISO
	DIN 7663 A	
	DIN 7663 B	
	DIN 7663 C	

UNI	DIN	ISO
C70		
	11023	

DADI A SALDARE
WELDING NUTS

UNI	DIN	ISO
8/6S	929	

LINGUETTE AD INCASTRO
PARALLEL KEYS

UNI	DIN	ISO
C40	6604/A	6885A
		R773

RONDELLE/GUARNIZIONI
WASHERS

UNI	DIN	ISO

Rame/Copper Aluminium

ALTRA MINUTERIA
OTHER FASTENERS

UNI	DIN	ISO
4.8		

CHIAVE LARGA
LARGE EXAGON

UNI	DIN	ISO
8/6S	928	

BULLONI PER ZAPPETTE
NUTS FOR BLADES

UNI	DIN	ISO
8.8		

CHIAVE LARGA
LARGE EXAGON

UNI	DIN	ISO
8/6S	928	

UNI	DIN	ISO
4.8		

ROSETTE CONTACT
SPRING WASHERS

UNI	DIN	ISO
Acciaio/Steel		



viteria per legno/lamiera

screws for wood/sheet metal

- GREZZO
PLAIN
- ZINCATO BIANCO
WHITE Z.P.
- ZINCATO GIALLO
YELLOW Z.P.
- BRONZATO
BRONZE PLATED
- NICHELATO
NICHEL PLATED

VITI PER PANNELLI TRUCIOLARI

POZI PAN HEAD CHIPBOARD SCREWS

C15	UNI	DIN	ISO
		7505-A	
		7505-B	
		7505-C	
TORX			

RIVETTI

RIVETS

	UNI	DIN	ISO
Acciaio/Steel	9200A	7337	
Rame/Copper	9200A	7337	
Coppernickel	9200A	7337	
Aluminium	9200A	7337	
Aluminium	Ermetici	Blind	

VITI COMBI

COMBI TRUSS HEAD MACHINE SCREWS

4.8	UNI	DIN	ISO
	TSC		
	TBL		

VITI POELIERS

ROOFING SCREWS

	UNI	DIN	ISO

VITI TESTA PIANA SVASATA CAVA

ESAGONALE - COUNTERSUNK SOCKET SCREWS

4.8	UNI	DIN	ISO
	5933	7991	

VITI TESTA TONDA TTQST

CARRIAGE BOLTS

4.6	UNI	DIN	ISO
	5731	603	8677
	5731	603	8677

VITI TESTA MEZZA TONDA COMBI POZI

POZI COMBI TRUSS HEAD SCREWS

4.8	UNI	DIN	ISO

VITI TESTA BOMBATA

PAN HEAD SCREWS

4.8	UNI	DIN	ISO

VITI PER CARTONGESSO

DRYWALL SCREWS

C15	UNI	DIN	ISO

VITI AUTOPERFORANTI

SELF DRILLING SCREWS

C15	UNI	DIN	ISO
	T.C. FINTA RONDELLA FLANGE PAN HEAD SCREWS		
	8117	7504-K	15480
	8118	7504-N	15481
	8119	7504-P	15482

INSERTI FILETTATI

THREADED INSERTS

	UNI	DIN	ISO
Aluminium	9201		
Acciaio/Steel	9201		
Aluminium	9202		
Acciaio/Steel	9202		

VITI PER LEGNO

HEX HEAD WOOD SCREWS

4.8	UNI	DIN	ISO
	704	571	

TESTA ESAG. FINTA RONDELLA PER LEGNO

HEXAGON FLANGED WOOD SCREWS

4.8	UNI	DIN	ISO

VITI AUTOFILETTANTI

SELF TAPPING SCREWS

C15	UNI	DIN	ISO
	T.C. FINTA RONDELLA FLANGE PAN HEAD SCREWS		
	6950	6928	
	6954	7981	7049
	6955	7982	7050
	6956	7983	7051
	1/2 TONDA TRUSS HEAD		
	6951	7971	1481
	6953	7973	1483
	6952	7972	1482
	T.C.E.I. SOCKET HEAD		

CHIAVI ESAGONALI

HEXAGON SOCKET SCREW KEYS

4.8	UNI	DIN	ISO
	6753	911	2936



bulloneria e viteria in inox e ottone

bolts screws and nuts in stainless steel and brass

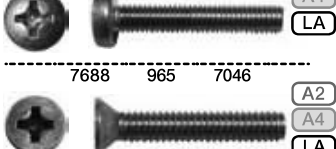
VITI TESTA ESAGONALE
HEX HEAD SCREWS

UNI	DIN	ISO
5737	931	4014
5739	933	4017



VITI PER METALLO TAGLIO CROCE
PHIL MACHINE SCREWS

UNI	DIN	ISO
7687	7985	7045



VITI A LEGNO TESTA ESAGONALE
HEX HEAD WOOD SCREWS

UNI	DIN	ISO
704	571	



DADI AD ALETTE
WING NUTS

UNI	DIN	ISO
5448	315-1587	



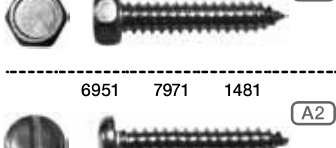
VITI TESTA CILINDRICA CON CAVA ESAGONALE
SOCKET HEAD CAP SCREWS

UNI	DIN	ISO
5931	912	4762



VITI AUTOFILETTANTI
SELF TAPPING SCREWS

UNI	DIN	ISO
6949	7976	1479



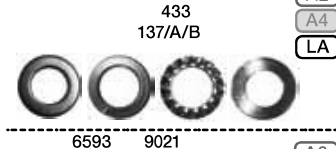
VITI POELIERS
ROOFING SCREWS

UNI	DIN	ISO



RONDELLE
WASHERS

UNI	DIN	ISO
6592/1751	125-127	
8842	6798	
	433	
	137A/B	



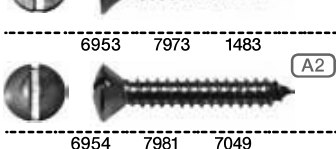
VITI TESTA SVASATA PIANA CON CAVA ESAGONALE
HEAD SOCKET SCREWS

UNI	DIN	ISO
5933	7991	



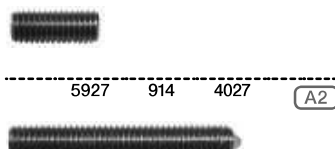
VITI PER METALLO
MACHINE SCREWS

UNI	DIN	ISO
6107	84	1207



GRANI CAVA ESAGONALE
HEXAGON SOCKET SET SCREWS

UNI	DIN	ISO
5923	913	4026



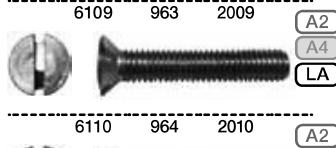
ANELLI DI ARRESTO
RETAINING RINGS

UNI	DIN	ISO
7435	471	
7437	472	



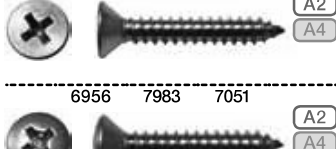
VITI PER METALLO
MACHINE SCREWS

UNI	DIN	ISO
6109	963	2009



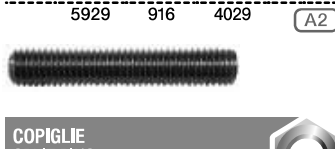
VITI PER METALLO
MACHINE SCREWS

UNI	DIN	ISO
6952	7972	1482



COPIGLIE
SPLIT PINS

UNI	DIN	ISO
5927	914	4027



INSERTI FILETTATI
THREADED INSERTS

UNI	DIN	ISO



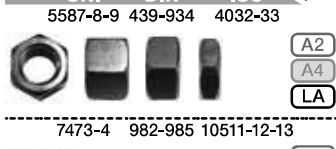
VITI TESTA TONDA TTQST
CARRIAGE BOLTS

UNI	DIN	ISO
5732	603	8677



DADI ESAGONALI
HEX NUTS

UNI	DIN	ISO
5587-8-9	439-934	4032-33



COPIGLIE
SPLIT PINS

UNI	DIN	ISO
1336	94	1234



RIVETTI
RIVETS

UNI	DIN	ISO
9200-A	7337-A	



VITI PER PANNELLI TRUCIOLARI
POZI PAN HEAD CHIPBOARD SCREWS

UNI	DIN	ISO



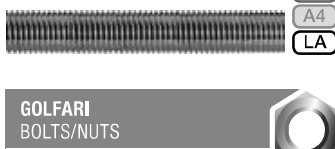
VITI TESTA CILINDRICA BOMBATA
CON CAVA ESAGONALE
SOCKET HEAD CAP SCREWS

UNI	DIN	ISO
		7380



BARRA FILETTATA RULLATA
THREADED RODS

UNI	DIN	ISO
	975	



FASCETTE STRINGITUBO A VITE
REGULAR CLOSE CLAMPS

UNI	DIN	ISO



GOLFARI
BOLTS/NUTS

UNI	DIN	ISO
2947	580	582



AUTOAGGANCIANTI
SELF CLINCHING

UNI	DIN	ISO



COLLARI A BULLONE
BOLT CLAMPS

UNI	DIN	ISO

