

BALLISTIC RATED GUARD BOOTH

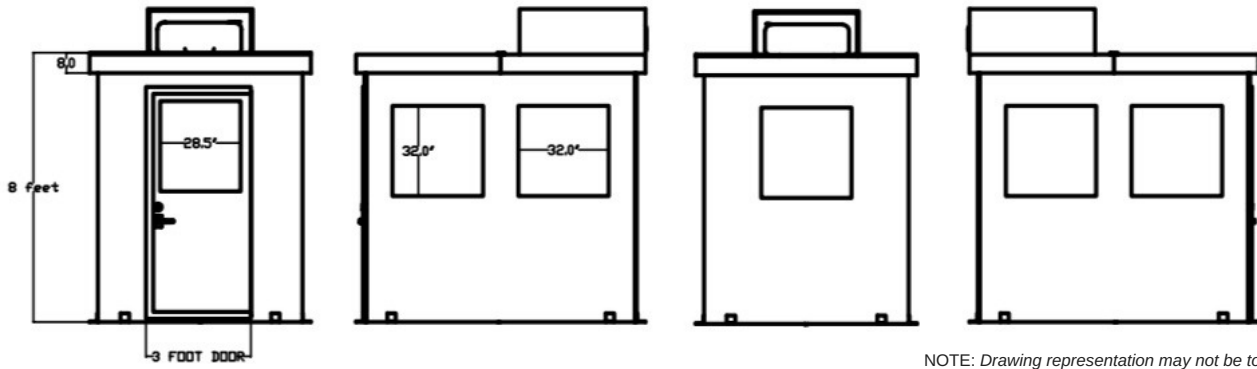


OVERVIEW

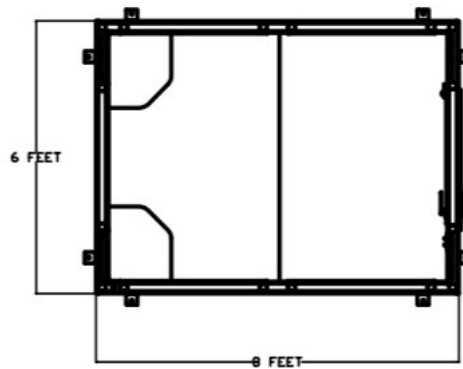
- Preassembled, designed and structurally engineered. Steel mechanical square tubing framework meets ASTM-A500 standards.
- Prefabricated as specified by the UFGS Specifications, section 13.34.21.
- FRP interior panels fabricated and insulated to a minimum R-12. All joints pressure sealed against any weather intrusion.
- Heavy duty hinged doors with full length hinge. Doors come with heavy duty hardware, keyed lock and weather stripping.
- Non-slip flooring for safety. Anti-fatigue mats can be provided upon request.

- Rust inhibitive high build epoxy primer and urethane finish coat. Custom designs and colors are available.
- 13500 BTU Heating and Cooling, roof mounted unit. Bullet resistant shroud covering HVAC system available for ballistic rated models.
- Two 20 amp, 120 volt, GFI duplex wall outlets.
- Pre-wired electrical power service in accordance with U.L. and NEC standards for quick and easy installation on the project site. 100 amp, 120/240 volt, three wire, single phase, 8-16 circuit breaker panel.

BALLISTIC RATED GUARD BOOTH



NOTE: Drawing representation may not be to scale



BASE MODEL INCLUDES:

1. (1) Main Cabin Interior 4 foot LED light with wall switches
2. (2) 120VAC duplex outlets
3. Sub-panel load center, 120/240VAC, Single Phase, Min. 100 Amp.
4. (1) Hinged Single Vision Door 28.5" X 32" viewable.
5. Floor, Roof and Wall insulation (Min R-12 Value)
6. Roof mounted 13,500 BTU heating & cooling unit, with bullet resistant enclosure.
7. (2) Stainless steel corner counters, (1) access port each for electrical cables
8. (6) Each Bullet resistant glass windows-(B/R to required level). (5) 32" X 32" viewable, (1) 32" X 28.5" viewable
9. Ballistic Rated exterior walls and door, to required level
10. Raised steel tread plate floor system coated with protective non-skid 2K Urethane
11. Single Color Booth Finish, coated to conform to a min. standard of AWWA-D102, and OCS#4, 5, & 6.
12. Standard Parapet style roof design, with 3" Roof Over-hang all sides
13. (2) 4x4 data box enclosures (1) under each counter, with conduit raceways, and stub area

14. Sub frame fabricated from 2" square 14 gauge tubing
15. Surface mount, bolt down design
16. Interior walls textured white finish FRP wallboard
17. Factory pre-wired to load center, performed to latest NEC code
18. Adequate foam sill plate gasket supplied for installation.

OPTIONAL ADD-ON:

- Pass thru compartments (deal tray)
- Gun ports
- Panic Bar Exit
- Automatic door closer
- Keypad combination door hardware
- Raised floor level / platform
- Alternative flooring / floor covering
- Tinted glass
- Security equipment wiring provisions / cameras
- Custom wiring (ex. Ethernet...)
- Exterior security spot and/or flood lighting
- Thru window communication
- Insulation upgrade
- Custom shelving or cabinets
- Brick/stone coping prep
- Trailer mounted mobile version with or w/o generator