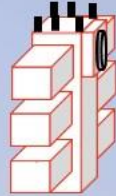




# PACKAGE # 301

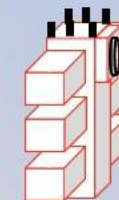
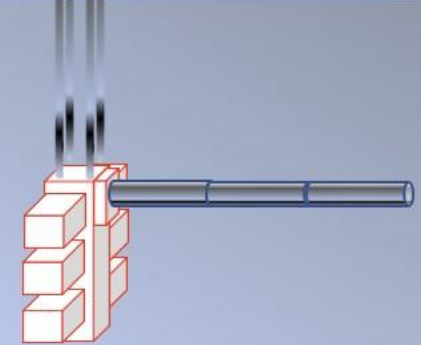
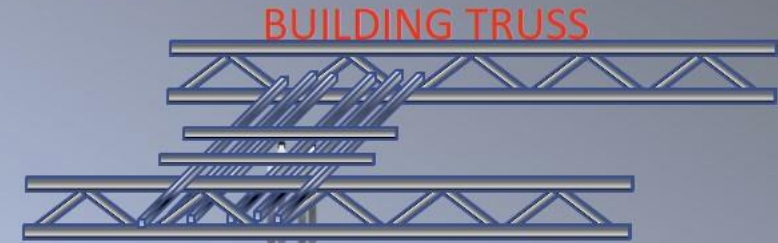


ANY MECHANICAL COMPANY WILL BE CAPABLE OF INSTALLING THESE UNITS, THEY ARE AVAILABLE AS THE UNIT ALONE OR IN A COMPLETE KIT



24 FT OF 24" DIA. SPIRAL DUCT IS REQUIRED FOR EACH UNIT (INCLUDED IN PACKAGE #31)

HARDWARE KIT TO SUSPEND THE UNIT FROM BUILDING TRUSSES



4 - 1/2" STUDS SECURE THE UNITS WITH THREADED ROD.  
2 - 1/2" STUDS ARE CENTERED TO LIFT IT.

## ★ HOW MANY ?

### ★ FORMULA TO DETERMINE THE NUMBER OF UNITS NEEDED

- ★ A DISTRIBUTION WAREHOUSE CAN BE FILTERED IN AS LITTLE AS 3 AIR CHANGES PER HOUR, OR 1 CHANGE EVERY 20 MINUTES.
- ★ A TANIS UNIT PRODUCES 300,000 CUBIC FT. IN 20 MINUTES!
- 1. MEASURE LENGTH x WIDTH x HEIGHT = CUBIC FT.  
EXAMPLE:  
2. 1000 FT length. X 600 FT. wide X 32 FT. high = 19,200,000 cubic ft.  
19,200,000 cubic ft. ÷ 300,000 cubic ft. per 20 min. = **64 UNITS**
- 3. **PACKAGE # 301** INCLUDES: ONE UNIT, DUCTING, MAGNETIC SWITCH, ONE YEAR FILTER SUPPLY.
- 4. OPTIONAL: UNIT ALONE #301A, SUSPENSION KIT # 301B