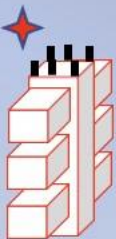


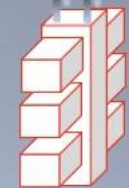
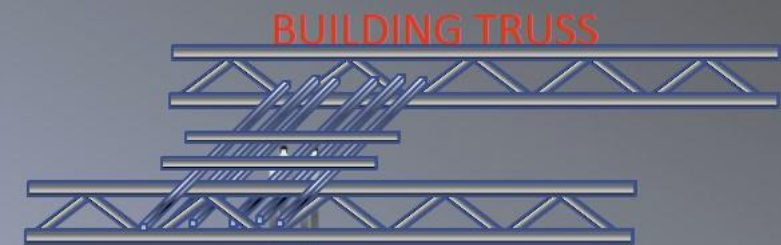


**MACHINING FOG**

# PACKAGE # 306



ANY MECHANICAL COMPANY WILL BE CAPABLE OF INSTALLING THESE UNITS, THEY ARE AVAILABLE AS THE UNIT ALONE OR IN A COMPLETE KIT



## HOW MANY ?

### FORMULA TO DETERMINE THE NUMBER OF UNITS NEEDED

A MACHINE SHOP CAN BE FILTERED IN AS LITTLE AS 6 AIR CHANGES PER HOUR, OR 1 CHANGE EVERY 10 MINUTES.

A TANIS UNIT PRODUCES 140,000 CUBIC FT. IN 10 MINUTES!

MEASURE LENGTH x WIDTH x HEIGHT = CUBIC FT.

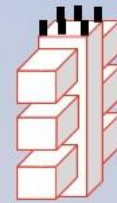
EXAMPLE:

200 FT length. X 100 FT. wide X 21 FT. high = 420,000 cubic ft.

420,000 cubic ft. ÷ 140,000 cubic ft. per 10 min. = **3 UNITS**

**PACKAGE # 306** INCLUDES: ONE UNIT, DUCTING, MAGNETIC SWITCH, ONE YEAR FILTER SUPPLY, AND SUSPENSION KIT

OPTIONAL: UNIT ALONE #306A,



4 - ½" STUDS SECURE THE UNITS WITH THREADED ROD.