

Post-Pandemic Work & Teaching



What are some trends or issues that we might imagine as we begin the transition back to face-to-face teaching and work? This list is intended as a conversation starter.

Teaching Talk #50

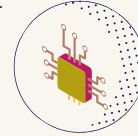
Flexible

So many LTCC faculty and staff illustrated flexibility in terms of their pandemic work and teaching and it is possible to imagine the many positive things that are results of such flexibility as we move forward at the college. In terms of flexibility, what are some lessons we learned?



Technological

Many of LTCC's adaptations to the pandemic were technological. What are some ways that we might imagine continuing with forms of technology that played vital roles in our pandemic work and teaching?



Empathic

During the pandemic, empathy has been a major topic of conversation at LTCC. How do you see us applying forms of empathy with students (and ourselves) as we move out of COVID-19 realities?



Hybrid

Adapting to post-COVID-19 realities may require considerations of hybrid approaches, such as a combination on in-person/physical events and classes and virtual/distance versions. Which of these are the most important?



Post-Physical

Moving to primarily virtual forms of instruction and work was not without its challenges, yet the adaptation required taught us some lessons about a post-physical educational world. What aspects of this post-physical world will stay with us?



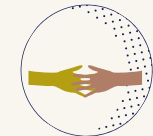
Economical

Some programs suffered understandable declines during COVID-19. How might we consider LTCC's economic realities as we move forward, including those that relate to student housing, food, and technology needs?



Anti-Racist

The many lessons learned through DEI work during the pandemic may be applied to educational initiatives in the future. What are some of the most immediate DEI efforts that you might imagine?



Reflexive

The crises of COVID-19 and DEI reminded us of the challenges that we face and encourage us to think of new ideas moving forward. They also encourage us to be reflexive and take critical and introspective looks at ourselves and how we can improve. What are your ideas?



Content Lessened

Due to emphases on mental health and empathy, some faculty have lessened some of the typical content in their classes so as to provide necessary support to our students. Do you imagine any of these forms of support staying with us in the post-pandemic world?



Immersive

More immersive forms of teaching and pedagogy may be considered as a vital part of future LTCC students' classes. What are some of your ideas in terms of future immersive classroom or other student-focused efforts?



Communal

LTCC's COVID-19 adaptations required flexibility and a good deal of communal effort. Moving forward, we can imagine ways of increasing communal efforts in our work and forms of teaching. What are some ideas that you have?



Post-Traumatic

The realities of COVID-19 and DEI events and efforts reminded us of the value of addressing student (and our) mental health. In what ways will we continue to focus on mental health and trauma in our work?

