



FOOTWEAR





HYPERLIGHT DRIFT SNEAKER
MF20EF20 · 75% Polyester / 25% Nylon Knit Upper
FA20-05-27-00-551



TITANIUM (2,3)



KYANITE (2,3)



PEARL (2,3)

HYPERLIGHT GLIDE REFLECT SNEAKER
MF20EF06 · 75% Polyester / 25% Nylon Knit Upper
FA20-05-27-00-551



GUNMETAL (2,3)



SANDSTONE (2,3)



NAVY (2,3)



SILVER (2,3)

HYPERLIGHT GLIDE CAMO SNEAKER
MF20EF05 · 75% Polyester / 25% Nylon Knit Upper
FA20-05-27-00-551



NAVY (2,3)

We recommend ordering one half size up from your normal shoe size for all Hyperlight Sneakers.

HYPERLIGHT WELTED PEBBLE GRAIN PENNY LOAFER
MS20F60 · 100% Leather
FA20-E-05-901-00-842



STOUT (2,3)

HYPERLIGHT WELTED NUBUCK PENNY LOAFER
MS20F61 · 100% Nubuck
FA20-05-901-00-842



CAFÉ (2,3)

HYPERLIGHT WELTED NUBUCK PENNY LOAFER
MF20F61 · 100% Nubuck
FA20-E-05-901-00-942



NAVY (2,3)

HYPERLIGHT HANDSEWN LEATHER PENNY LOAFER
MF20F62 · 100% Leather
FA20-05-901-00-942



BOURBON (2,3)

HYPERLIGHT HANDSEWN SUEDE PENNY LOAFER
MF20F63 · 100% Suede
FA20-05-901-00-942



SCOTCH (2,3)

HYPERLIGHT NUBUCK VENETIAN LOAFER
MF20F55 · 100% Nubuck
FA20-E-05-39-00-991



COGNAC (2,3)



NAVY (2,3)



ARMY (2,3)

HYPERLIGHT LEATHER BIT LOAFER
ME0F51 · 100% Leather
FA20-E-05-39-00-891



BROWN (1,2,3)



BLACK (1,2,3)

CROWN SUEDE SNEAKER
MF20F05 · 100% Suede
FA20-E-05-39-00-991



SCOTCH (2,3)



NAVY (2,3)

SUEDE CHELSEA BOOT
MF20F03 · 100% Suede
FA20-E-05-901-00-942



CHOCOLATE
(2,3)

MOUNTAINSIDE SHETLAND WOOL SLIP-ON
MF20F01 · 100% Wool
FA20-E-05-39-00-991



NAVY (2,3)



CHARCOAL
(2,3)

MOUNTAINSIDE LEATHER CHUKKA SNEAKER
MF20F02 · 100% Leather
FA20-E-05-211-00-942



CHOCOLATE
(2,3)



MF20RF07
Collection Slip On Chukka
100% Leather
BISCOTTI

MF20RF07
Collection Slip On Chukka
100% Leather
AVIO BLUE

MF20RF07
Collection Slip On Chukka
100% Leather
SPRUCE

MF20RF07
Collection Slip On Chukka
100% Leather
ESPRESSO

MF20RF07
Collection Slip On Chukka
100% Leather
VICUÑA



A. MF20RA04
Alpine Woven Wool Belt
42% Wool / 42% Nylon / 16% Elastane
with 100% Suede Details
BARCHETTA
BLUE
Made In Italy

B. MF20RA01
Elkskin Belt
100% Elkskin
ESPRESSO
Made in the USA

C. MF20RA06
Hand Softened O-Ring
100% Bovine Leather
ESPRESSO
Made In Italy

D. MF20RA02
Nubuck Belt
100% Nubuck
VICUÑA
Made in the USA

E. MF20RA04
Alpine Woven Wool Belt
42% Wool / 42% Nylon / 16% Elastane
with 100% Suede Details
NICKEL
Made In Italy

F. MF20RA05
Antique Pebble Grain Belt
100% Calfskin
ESPRESSO
Made in the USA

Hosiery

(3 per pack)



FA20-00-01-00-52

CROWN SOLID RIB CREW SOCK

P8001 · 75% Cotton / 23% Nylon / 2% Spandex



001 BLACK

002 NAVY

003 CHARCOAL

009 LIGHT GREY

034 KHAKI HEATHER

042 BROWN

047 DARK PEAT

CASHMERE RIB CREW SOCK

P8079 · 75% Cashmere / 25% Nylon



001 BLACK

002 NAVY

003 CHARCOAL

006 BLUE

007 LIGHT GREY

008 OATMEAL

DONEGAL CREW SOCK

P8106 · 64% Merino Wool / 23% Alpaca / 9% Nylon / 4% Acrylic



001 NAVY HEATHER

002 CHARCOAL HEATHER

003 KHAKI HEATHER

004 RED HEATHER

MULTI-NEEDLE STRIPE CREW SOCK

P8095 · 75% Cotton / 23% Nylon / 2% Spandex



001 DEEP COBALT

002 DARK BLUE

003 BROWN MARL

TRIPLE STRIPE CREW SOCK

P8096 · 75% Cotton / 23% Nylon / 2% Spandex



001 NAVY

002 LIGHT GREY

003 DEEP COBALT

004 DARK BLUE

VARIED BAR STRIPE CREW SOCK

P8097 · 75% Cotton / 23% Nylon / 2% Spandex

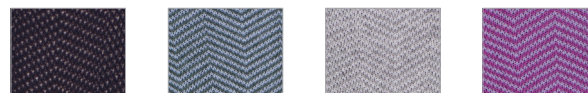


001 CHARCOAL

002 NAVY

CHEVRON HERRINGBONE CREW SOCK

P8098 · 75% Cotton / 23% Nylon / 2% Spandex



001 NAVY

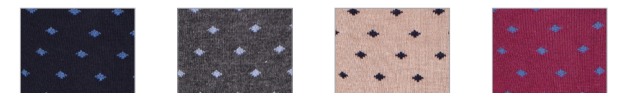
002 VERDE HEATHER

003 LIGHT GREY

004 ULTRAVIOLET

PIN DOT CREW SOCK

P8104 · 75% Cotton / 23% Nylon / 2% Spandex



001 NAVY

002 CHARCOAL

003 KHAKI HEATHER

004 POMEGRANATE

AWNING STRIPE CREW SOCK

P8099 · 75% Cotton / 23% Nylon / 2% Spandex



001 BLACK 002 DEEP COBALT 003 LIGHT GREY 004 ORCHID 005 COTTAGE BLUE

PLACED STRIPE CREW SOCK

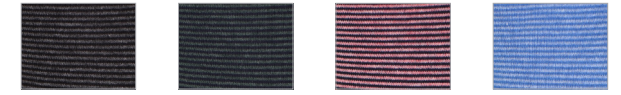
P8101 · 75% Cotton / 23% Nylon / 2% Spandex



001 CHARCOAL 002 NAVY 003 CAPE BLUE

NEEDLE STRIPE CREW SOCK

P8102 · 75% Cotton / 23% Nylon / 2% Spandex



001 BLACK 002 NAVY 003 DARK BLUE 004 CAPE BLUE

MULTI-PIN DOT CREW SOCK

P8103 · 75% Cotton / 23% Nylon / 2% Spandex



001 DEEP COBALT 002 COTTAGE BLUE

WIDE STRIPE CREW SOCK

P8100 · 75% Cotton / 23% Nylon / 2% Spandex



001 DEEP COBALT 002 CHARCOAL 003 CAPE BLUE 004 ORCHID

HOUNDSTOOTH CREW SOCK

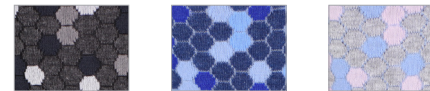
P8105 · 75% Cotton / 23% Nylon / 2% Spandex



001 BLACK 002 DEEP COBALT 003 CHARCOAL

SMALL OCTAGON CREW SOCK

P8107 · 75% Cotton / 23% Nylon / 2% Spandex



001 BLACK 002 COTTAGE BLUE 003 PALMER PINK HEATHER

STRIPED NO-SHOW SOCK
P7024 · 62% Cotton / 37% Nylon / 1% Spandex



001 DEEP COBALT

002 GREY

003 DARK GREEN

004 COTTAGE
BLUE

CAMO NO-SHOW SOCK
P7025 · 62% Cotton / 37% Nylon / 1% Spandex



001 BLACK

002 DEEP
COBALT

003 GREY

FAIRISLE NO-SHOW SOCK
P7029 · 62% Cotton / 37% Nylon / 1% Spandex



001 OLIVE

002 WHITE
HEATHER

003 DEEP
COBALT

STAG NO-SHOW SOCK
P7026 · 62% Cotton / 37% Nylon / 1% Spandex



001 DEEP COBALT

002 OLIVE

003 MID-BLUE

MOTOR BIKE NO-SHOW SOCK
P7027 · 62% Cotton / 37% Nylon / 1% Spandex



001 CHARCOAL

002 DEEP
COBALT

003 CAPE RED

ADVENTURE DAYS NO-SHOW SOCK
P7028 · 62% Cotton / 37% Nylon / 1% Spandex



001 BLACK

002 OLIVE

003 COTTAGE
BLUE



ACCESSORIES



MF20RA14
100% Lambskin Suede
100% Elkskin
MANDARINE
Made in Italy

MF20RA14
100% Lambskin Suede
100% Elkskin
BARCHETTA
BLUE
Made in Italy

MF20RA10
100% Calfskin Nappa Leather
100% Elkskin
BISCOTTI
Made in Italy

MF20RA10
100% Calfskin Nappa Leather
100% Elkskin
ESPRESSO
Made in Italy



STRIPED WOOL BELT

MF20A00 · 50% Wool / 45% Rubber / 5% Cowhide Leather
FA20-05-65-00-521



NAVY

MÉLANGE WOOL BELT

MF20A01 · 33% Wool / 33% Acrylic / 29% Elastane / 5% Cowhide Leather
FA20-05-65-00-521



SCOTCH

WINTER BRAIDED BELT

MF20A04 · 70% Linen / 20% Cotton / 10% Cowhide Leather
FA20-05-65-00-521



NAVY

BRAIDED SUEDE BELT

MF20A07 · 55% Cowhide Leather / 32% Acrylic / 13% Wool
FA20-05-65-00-521



CAROB BROWN

CLASSIC LEATHER BELT

ME0A10 · 100% Cowhide Leather
FA20-05-65-00-521



COGNAC



BROWN



BLACK

REVERSIBLE LEATHER BELT

ME0A11 · 100% Cowhide Leather
FA20-05-65-00-521



BLACK / BROWN



WAXED BRAIDED BELT

ME0A14* / MF20A14 · 80% Cotton / 10% Cowhide Leather / 5% Elastane / 5% Rayon
FA20-05-65-00-521



*KHAKI



*NAVY



*STONE



GALE GREY

LADDER BELT

MF20A50 · 45% Wool / 45% Acrylic / 5% Cowhide Leather / 3% Elastane / 2% Polyester
FA20-05-65-00-521



NAVY

NEEDLE STRIPE O-RING BELT

MF20EA15 · 90% Polyester / 10% Elastane
FA20-E-05-63-00-97



KHAKI



GALE GREY



NAVY

Cotton Web Belt / Key FOB Program

AC0A100 / AC0A100NL / ACA100YTH / AC0A103



103: FA20-00-01-00-02



104: FA20-00-02-04



100: FA20-00-24-00-58 100NL: FA20-00-53-00-07 100YTH: FA20-00-73-00-57

Selection Of Available Styles (Flask Club Program Only)



Selection of Available Styles

ANTIQUE NAVY	PATRIOT NAVY	ROYAL BLUE	AZURE	MARINE BLUE	SAPPHIRE	TEAL	SLATE		
ERIN GREEN	BLACK	GREY	ALPINE WHITE	CRIMSON	STONE	KHAKI	CHESTNUT BROWN		
AUTUMN	NECTARINE	CORAL	CLASSIC PINK	RETRO PINK	MAROON	CARDINAL RED	NEWBURY RED	GARNET	
WINTERGREEN	RAINFOREST	BUTTER	CANARY YELLOW	LILAC	PURPLE				
PATRIOT NAVY / CRIMSON	PATRIOT NAVY / ERIN GREEN	ANTIQUE NAVY / INDIGO	AZURE / TARHEEL BLUE	MARINE BLUE / SLATE	SAPPHIRE / AZURE	SLATE / MARINE BLUE	CORAL / TARHEEL BLUE	ERIN GREEN / PATRIOT BLUE	
MAROON / PATRIOT NAVY	CRIMSON / PATRIOT NAVY	CLASSIC PINK / WHITE	STONE / WHITE	KHAKI / WHITE	PATRIOT NAVY / TARHEEL BLUE	TARHEEL BLUE / PATRIOT NAVY	GERANIUM / CREAM		

Chromacrown Belt, Key FOB, and Headcover Program

AC300US / AC300YTH / ACA0A301US / AC303US



303: FA20-00-01-00-02



300US: FA20-00-53-00-07 300YTH: FA20-00-03-00-06



301US: FA20-00-42-00-84

Selection of Available Styles



COCKTAIL PATTERN
NEW



FLORAL PATTERN
NEW



SAILING PATTERN
NEW



SKULL PATTERN
NEW



DATE
NEW



FENN
NEW



3 STRIPE



ALPS



CAMO



CAPE



CHEVRON



DELL



DOUBLE EDEN



EDEN



GINGHAM



HOUSTOOTH



MINI



POLKA DOTS

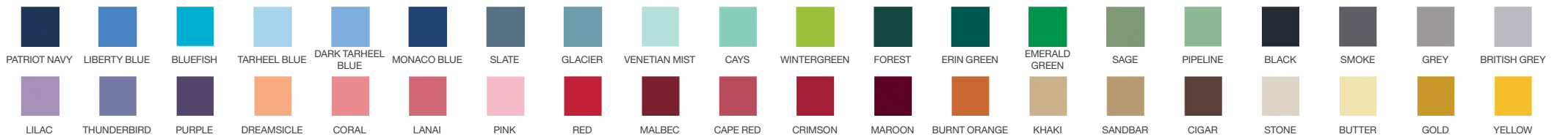


SEERSUCKER



SOLID

Selection of Available Colors



Needle Stripe O-Ring Belt
MF20EA15 · 90% Polyester / 10% Elastane
FA20-05-63-00-97



KHAKI



GALE GREY



NAVY

Two-Pack Performance Sock
ME0EF01
FA20-E-05-41-05-92



WHITE /
WHITE

Crown Seal Hat
AF20H100 / AS20H100* / AE0H100^ · 100% Polyester
FA20-E-05-41-05-92



POMEGRANATE



FIELD GREEN



YORK BLUE



CAPE BLUE



*STONE



^NAVY



^WHITE



^SMOKE



^BLACK

MF20RN01SQR
Collection Trimmed Pocket Square
100% Cotton



BARCHETTA BLUE NICKEL ESPRESSO

MF20RN02SQR
Alpine Floral Pocket Square
100% Wool



ICED PLUM BARCHETTA BLUE

MF20RN09SQR
Autumn Vale Pocket Square
51% Silk / 49% Cotton



ARGENTO ELDERBERRY

MF20RN10SQR
Strasse Geometric Pocket Square
100% Wool



BARCHETTA BLUE VICUÑA ESPRESSO SPRUCE

MF20RN03SQR
Collection Polka Dot Pocket Square
100% Wool



ARGENTO VICUÑA

MF20RN04SQR
Caven Camo Pocket Square
100% Wool



NICKEL STONE WASHED BLUE

MF20RN05SQR
Butte Bandana Pocket Square
51% Silk / 49% Cotton



ELDERBERRY ARGENTO

MF20RN11SQR
Peak Paisley Pocket Square
100% Wool



BARCHETTA BLUE ELDERBERRY HEATHER

MF20RN06SQR
Collection Chambray Pocket Square
100% Cotton



CHAMBRAY

MF20RN07SQR
Collection Solid Pocket Square
100% Cotton



SNOWDRIFT

MF20RN08SQR
Winter Soft Pocket Square
100% Wool



NICKEL OAT

MF20RN12SQR
Midlands Medallian Pocket Square
51% Silk / 49% Cotton



ICED PLUM STONE WASHED BLUE

MF20RN13SQR
Timberline Vine Pocket Square
100% Wool



BARCHETTA BLUE SPRUCE

Pocket Squares

Crafted in Italy

FLORAL AND VINE POCKET SQUARE
MF20N00SQR · 90% Wool / 10%Yak



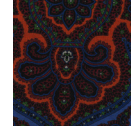
CAROB
BROWN

PLAID POCKET SQUARE
MF20N01SQR · 90% Wool / 10%Yak



CAPE BLUE

EXPLODED PAISLEY POCKET SQUARE
MF20N02SQR · 90% Wool / 10%Yak



YORK BLUE

PHEASANT'S POCKET SQUARE
MF20N03SQR · 90% Wool / 10%Yak



POMEGRAN-
ATE

FLORAL PAISLEY POCKET SQUARE
MF20N04SQR · 90% Wool / 10%Yak



YORK BLUE

PARTY BARGES POCKET SQUARE
MF20N05SQR · 100% Wool



CAPE BLUE

CLUBS AND CANS POCKET SQUARE
MF20N06SQR · 100% Wool



ATLANTIC
BLUE

HAZE POCKET SQUARE
MF20N07SQR · 100% Wool



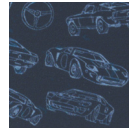
WILD LILAC

CAMO PRINT POCKET SQUARE
MF20N08SQR · 100% Wool



IRON

FILLMORE POCKET SQUARE
MF20N09SQR · 100% Wool



NAVY

ROCK AND ROLL POCKET SQUARE
MF20N10SQR · 100% Wool



CAPE BLUE

COTTON CANVAS WEEKEND BAG
AE0A100 · 100% Cotton Canvas with Full Grain Leather Trim
22" L x 14" H x 9" D
FA20-05-421-00-942



NAVY



CHARCOAL

COTTON CANVAS OVERNIGHT BAG
AE0A101 · 100% Cotton Canvas with Full Grain Leather Trim
18" L x 10" H x 8" D
FA20-05-79-00-591



NAVY



CHARCOAL

COTTON CANVAS SHAVE KIT
AE0A102 · 100% Cotton Canvas with Full Grain Leather Trim
9" L x 5" H x 3.5" D
FA20-05-93-00-97



NAVY



CHARCOAL

COTTON CANVAS SHOE BAG
AE0A103 · 100% Cotton Canvas with Full Grain Leather Trim
12" L x 5" H x 9" D
FA20-05-44-00-98



NAVY



CHARCOAL

NYLON GARMENT BAG
AE0A110 · 100% Nylon with Full Grain Leather Trim
24.5" W x 44" H
FA20-05-27-00-541



NAVY

NYLON CARRY-ON BAG
AE0A114 · 100% Nylon with Full Grain Leather Trim
17" L x 14" H x 10" D
FA20-05-28-00-561



NAVY

NYLON CLASSIC DUFFLE
AE0A112 · 100% Nylon with Full Grain Leather Trim
18" L x 11" H x 11" D
FA20-05-26-00-521



NAVY



LIGHT GREY

NYLON TOTE BAG
AE0A113 · 100% Nylon with Full Grain Leather Trim
20" L x 17" H x 10" D
FA20-05-94-00-99

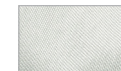


NAVY

NYLON COOLER BAG
AE0A111 · 100% Nylon with Full Grain Leather Trim
14" L x 13" H x 8" D
FA20-05-26-00-521



NAVY



LIGHT GREY

Cotton Canvas Custom Luggage Program

COTTON CANVAS WEEKEND BAG



COTTON CANVAS OVERNIGHT BAG



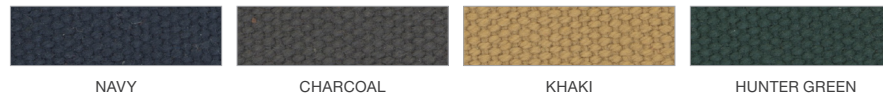
COTTON CANVAS SHAVE KIT



COTTON CANVAS SHOE BAG



EXTERIOR CANVAS OPTIONS



NAVY

CHARCOAL

KHAKI

HUNTER GREEN

INTERIOR LINING OPTIONS*



NAVY

LIGHT GREY

**custom printed lining available upon request*

Nylon Custom Luggage Program

NYLON GARMENT BAG



NYLON CARRY-ON BAG



NYLON CLASSIC DUFFLE



NYLON TOTE BAG



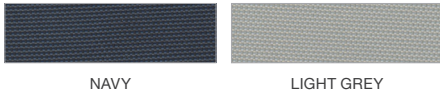
NYLON COOLER BAG



EXTERIOR NYLON OPTIONS



INTERIOR LINING OPTIONS*



**custom printed lining available upon request*

HANDLE / STRAPS



DEMPSEY BOXER 3-PACK

ME0180

FA20-E-05-61-00-53



COTTAGE BLUE
(1,2,3)

Solid White: 97% Cotton / 3% Spandex
Blue & White Stripe: 71% Cotton / 25% Nylon / 4% Spandex
Polka Dot: 96% Cotton / 4% Spandex
Boxer Bag: 71% Cotton / 25% Nylon / 4% Spandex

CROWN SEAL HAT

AF20H100 / AS20H100* / AEOH100^ · 100% Polyester

FA20-E-05-41-05-92



POMEGRANATE



FIELD GREEN



YORK BLUE



CAPE BLUE



*STONE



^NAVY



^WHITE



^SMOKE



^BLACK

CROWN SEAL HAT
AF20H100 / AS20H100* / AE0H100^ · 100% Polyester
FA20-E-05-41-05-92



^NAVY



^WHITE



^SMOKE



^BLACK

DEMPSEY BOXER 3-PACK
ME0180
FA20-E-05-61-00-53



COTTAGE BLUE
(1,2,3)

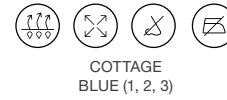
Solid White: 97% Cotton / 3% Spandex
Blue & White Stripe: 71% Cotton / 25% Nylon / 4% Spandex
Polka Dot: 96% Cotton / 4% Spandex
Boxer Bag: 71% Cotton / 25% Nylon / 4% Spandex

Solid Performance Boxer
ME0E101
FA20-E-05-61-00-53



WHITE (1, 2, 3)

"Nebraska" Performance Boxer
ME0E103
FA20-E-05-61-00-53



PALMER PINK
(1, 2, 3)

COTTAGE
BLUE (1, 2, 3)

NAVY (1, 2, 3)

"Jubilee" Performance Boxer
ME0E111
FA20-E-05-61-00-53



NAVY (1, 2, 3)

"Sasser" Performance Boxer
MF20E108
FA20-E-05-61-00-53



WHITE (1, 2, 3)

"Drew" Performance Boxer
MF20E121
FA20-E-05-61-00-53



WHITE (1, 2, 3)

"Vale" Performance Boxer
MF20E122
FA20-E-05-61-00-53



NAVY (3)

"Fillmore" Performance Boxer
MF20E127
FA20-E-05-61-00-53



NAVY (3)

"Haze" Performance Boxer
MF20E129
FA20-E-05-61-00-53



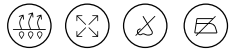
WILD LILAC
(2, 3)

"Heritage" Performance Boxer
MF20E130
FA20-E-05-61-00-53



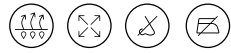
CAPE BLUE
(1, 2, 3)

Solid Performance Boxer
ME0EI01
FA20-E-05-61-00-53



WHITE (1, 2, 3)

Nebraska Performance Boxer
ME0EI03
FA20-E-05-61-00-53

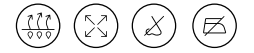


PALMER PINK
(1, 2, 3)

COTTAGE
BLUE (1, 2, 3)

NAVY (1, 2, 3)

Jubilee Performance Boxer
ME0EI11
FA20-E-05-61-00-53



NAVY (1, 2, 3)

Crown Seal Hat
AE0H100 · 100% Polyester
FA20-E-05-41-05-92



^NAVY



^WHITE



^SMOKE



^BLACK

Two-Pack Performance Sock
ME0EF01
FA20-E-05-41-05-92



WHITE /
WHITE



FRAGRANCE

CROWN SPORT 50ML EAU DE PARFUM
AE0T02
FA20-E-00-94-00-89



Buy 11 units of 50ml cologne, and receive a 12th unit free.
Ground shipment only. AE0T02DOZEN
FA20-00-935-00-8701

(1,2,3)

CROWN SPORT 10ML TRAVEL SET EAU DE PARFUM
AE0T04
FA20-E-00-92-00-85



Travel Case comes with 10ml removable vial. Vial refills available,
AE0T04REFILL.
FA20-00-41-00-82

(1,2,3)

CROWN SPORT 8OZ CANDLE
AE0T06
FA20-E-00-43-00-86



(1,2,3)

CROWN SPORT

This defining fragrance is portrayed by a composition of uniquely curated elements. Crafted with specially cold-pressed bergamot from Calabria Italy, this scent balances distinct herbaceous notes of warm amber and resinous cedar.

Acutely balanced in its discerning freshness, this fragrance illustrates an individual sensibility and soul.

TOP NOTES | Bergamot

MID NOTES | Nutmeg, Geranium

BOTTOM NOTES | Warm Amber, Cedar

CROWN 50ML EAU DE PARFUM
AE0T01
FA20-E-00-94-00-89



Buy 11 units of 50ml cologne, and receive a 12th unit free.
Ground shipment only. AE0T01DOZEN
FA20-00-935-00-8701

(1,2,3)

CROWN 10ML TRAVEL SET EAU DE PARFUM
AE0T03
FA20-E-00-92-00-85



Travel Case comes with 10ml removable vial. Vial refills available.
AE0T03REFILL.
FA20-00-41-00-82

(1,2,3)

CROWN 8OZ CANDLE
AE0T05
FA20-E-00-43-00-86



(1,2,3)

CROWN

Articulated by masterfully comprised components, this fragrance captures an essence of omnipotent sophistication.

Emanating woody-spicy notes of birch and leather, blended with an undertone of black pepper purveyed from Madagascar, this scent culminates a dynamic tenor of authenticity and spirit.

TOP NOTES | Black Pepper

MID NOTES | Orris, Birch

BOTTOM NOTES | Oakmoss, Leather

TRAVEL ESSENTIALS SHAVE KIT
AE0T07
FA20-E-00-94-00-89



Kit Includes:

30ml Moisturizer / 30ml Shave Cream / SPF 30 Lip Balm / Two 2.5ml Fragrance Testers
(1,2,3)