



1/2 CUBIC YARD

Chip Hopper



DMS Products

CONSTRUCTED FROM ROBUST AMERICAN STEEL WITH A HIGH-QUALITY POWDER-COATED FINISH.

This 1/2 cubic yard self-dumping hopper features a bottom trough and water valve to drain coolant before transferring contents to larger bins. Equipped with caster wheels, it's designed for easy mobility around your shop for added convenience.

WWW.DAKOTAMETALSOLUTIONS.COM

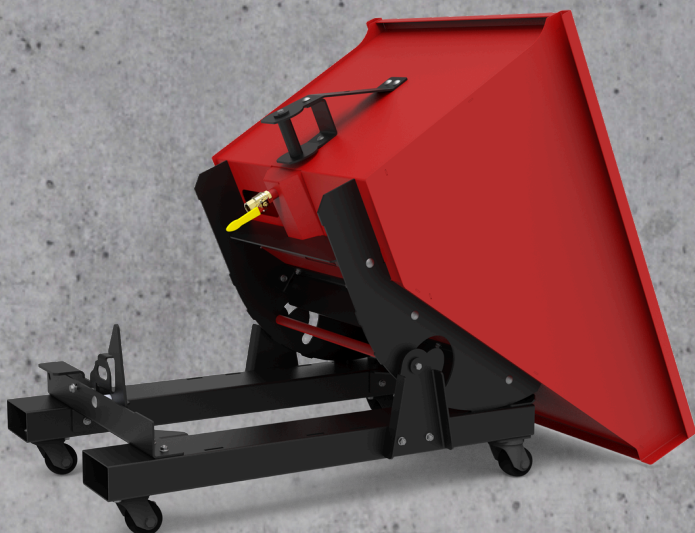
DAKOTA METAL SOLUTIONS LLC
45425 152ND ST
SUMMIT SD 57266



- **Capacity:** 2,000 LB.
- **Add-On:** Parts Catcher Tray
- **Construction:** Water-tight 12-Gauge welded Carbon Steel hopper. 7 Gauge Formed Steel Base

Length	Width	Height
45.00"	34.00"	35.78"

- **Caster Wheels** Rated At 4400 LB.
- **Safety Feature:** 1/4" chain for added safety
- **Fork Pocket Opening:** 26" wide x 3" high



- **Built-In Trough:** Angled for drainage, featuring a 3/4" valve for coolant removal
- **Hopper Tilt Angle:** 36.5 degrees
- **Rockers:** Single-piece, 1/4" laser-cut rockers