



SETTING UP TSENQNT8

Now that the download and installation is complete we will need to set up your software. You have purchased the strategy specifically designed to run on the NASDAQ futures markets. The strategy called TSENQNT8 and stands for Traders Strategic Edge NQ for NT8. Your installation of the strategy included the strategy itself, a bar type and a chart template.

StrategyTSENQ

Bar Type.....TSEBar

Chart TemplateTSENQNT8

These three components should have installed in your NinjaTrader system. The following instructions are designed to help you set up your working environment with TSENQNT8

Please review all the information on setting up NinjaTrader from their site, help files, tutorials, and Forums. It is important to understand the environment that TSENQNT8 operates in. Further information can be found at the following link about your NinjaTrader software package.

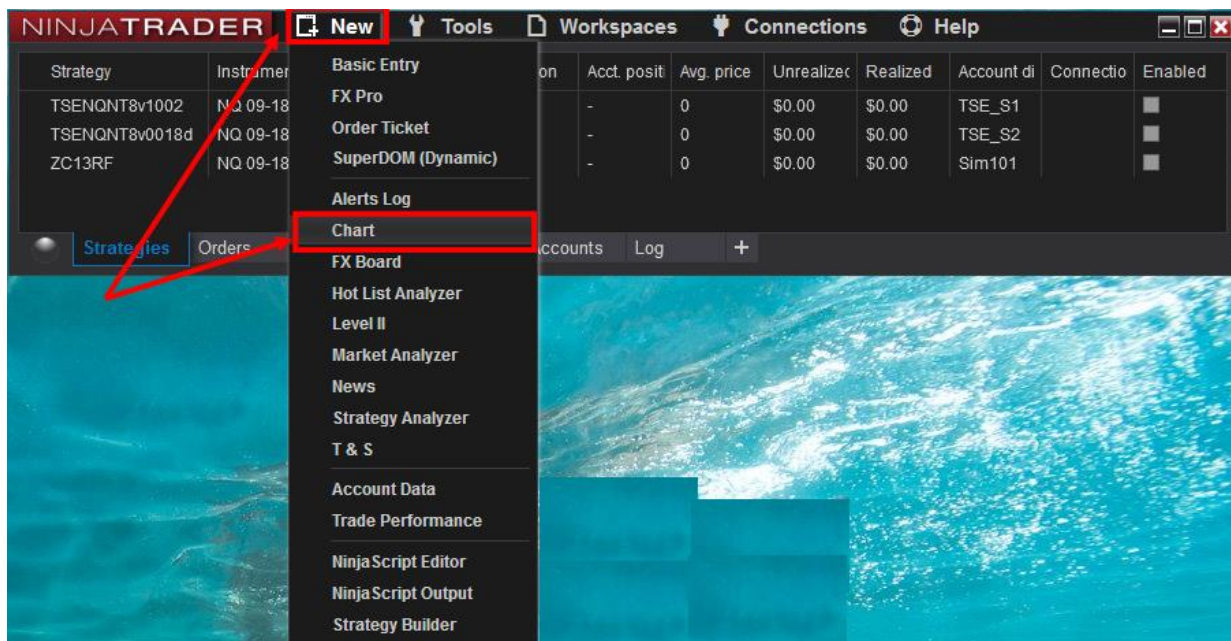
www.ninjatrader.com/help



Creating your Charts

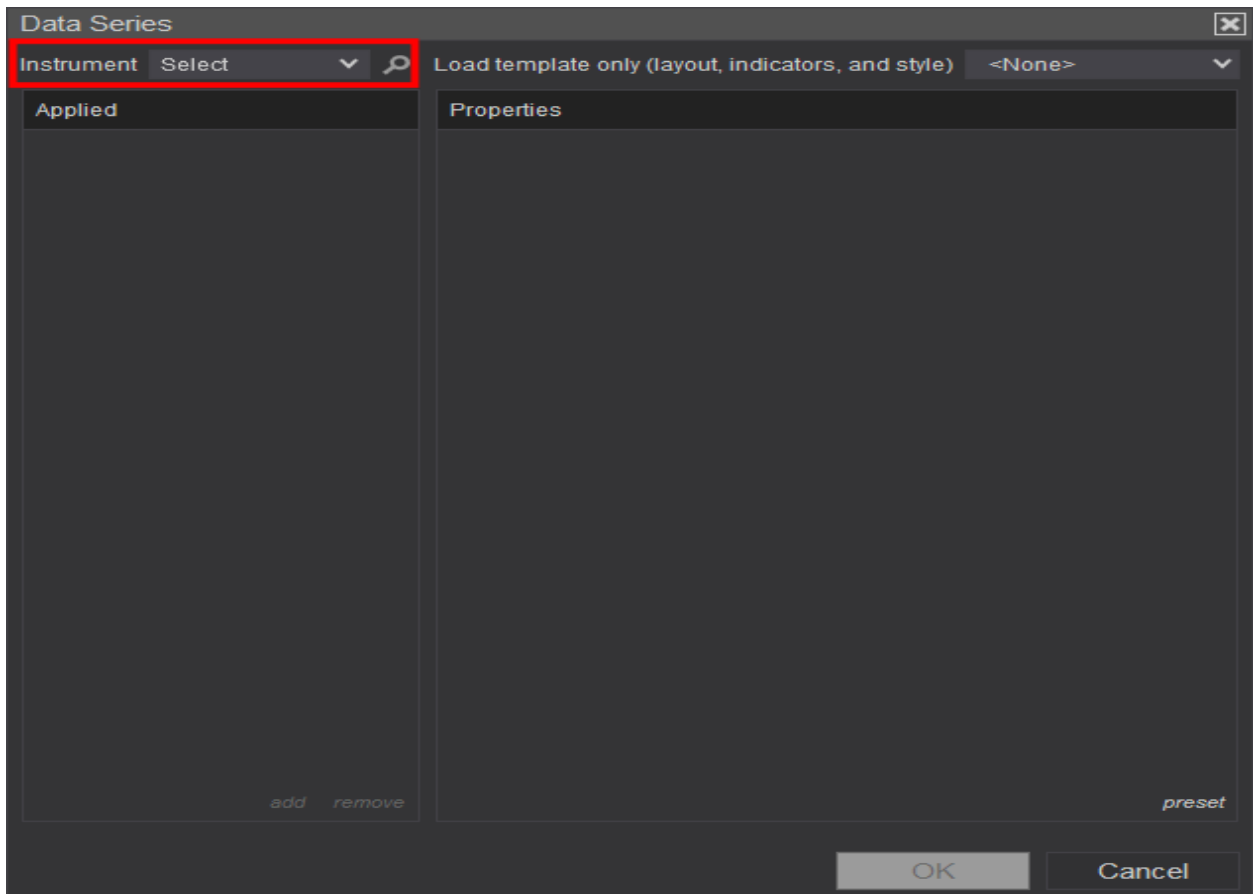
We have included one chart template for you to use if you would like to see your trades in action. You do not have to have any charts running to run the strategy, however we do recommend that you do have this chart running so that you can monitor the system and your auto trades more easily.

- 1) From the control panel select “New”, a drop-down menu appears.
- 2) Select “Chart” from this second series of options.





You will be presented with a Data Series Window.



- a. First select the market you will be trading in. For this strategy, we will only be trading the NQ, so you will need to select the Current period NQ contract. If you do not have the NQ data series installed please refer to your Ninja Trader information on how to download and install your Data Series (www.ninjatrader.com/help)



Data Series

Instrument Select

Applied
NQ 09-18 (TSEBar)

add remove

Properties

Data Series

Price based on Last

Type TSEBar

Tick Trend 4

Open Offset 10

Tick Reversal 20

Time frame

Load data based on Days

Days to load 7

End date 08/19/2018

Trading hours <Use instrument settings>

Break at EOD ☒

Chart style

Chart style Candlestick

Bar width 5

▶ Candle body outline Solid, 1px

▶ Candle wick Solid, 1px

Color for down bars Red

Color for up bars LimeGreen

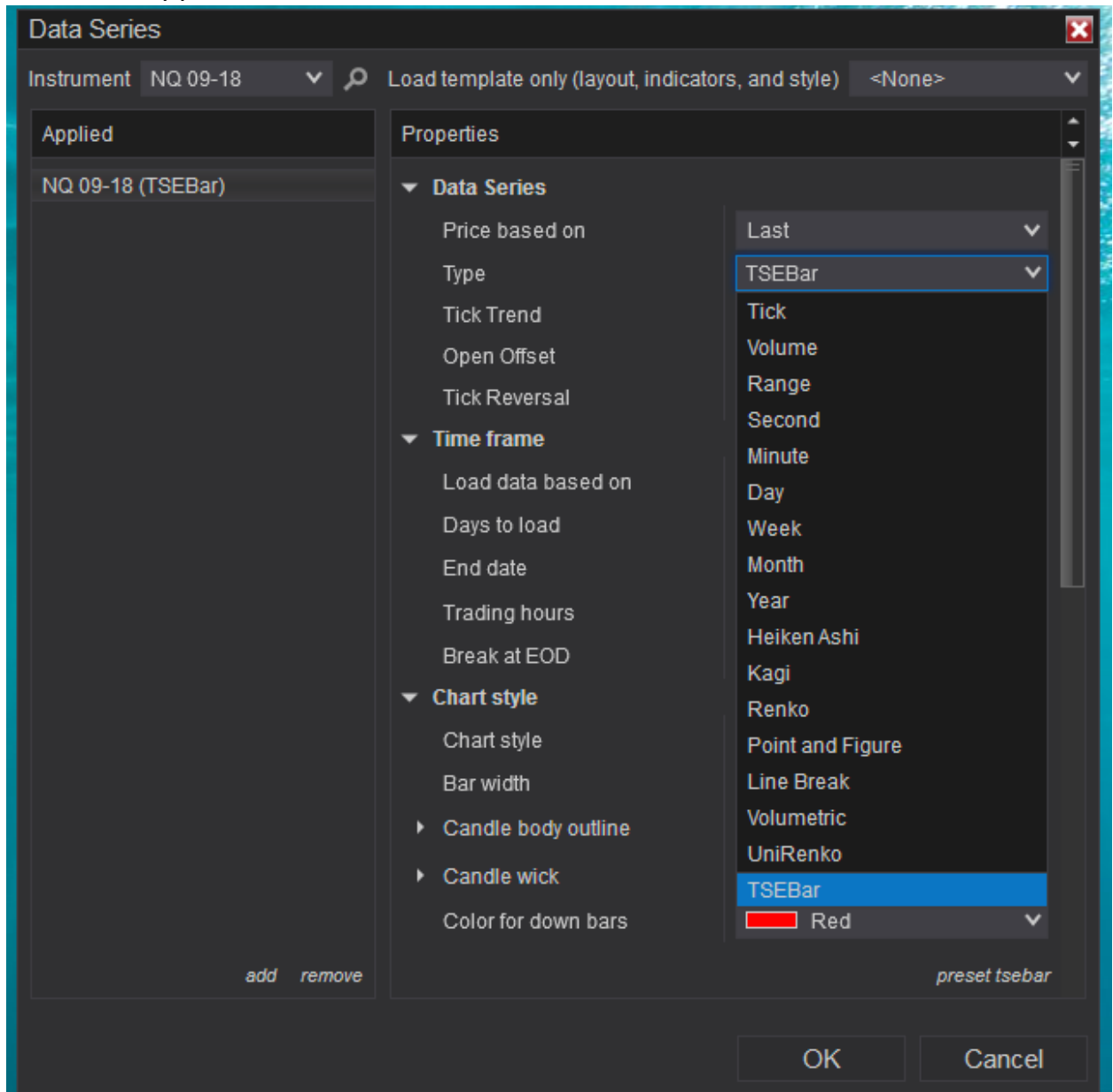
preset tsebar

OK Cancel Apply

- b. Once the current NQ contract is added you will be able to make selections from the upper right-hand box. This area represents various options that can be manipulated in the new chart you are creating.



- c. Under Data Series, and next to bar type make sure this is set to TSEBar. If it is not then click on the down arrow and list of Bar Types will appear.





- d. Select the 'TSEBar' as the bar type. Once done just double check that the following settings match:

Tick Trend = 4

Open Offset = 20

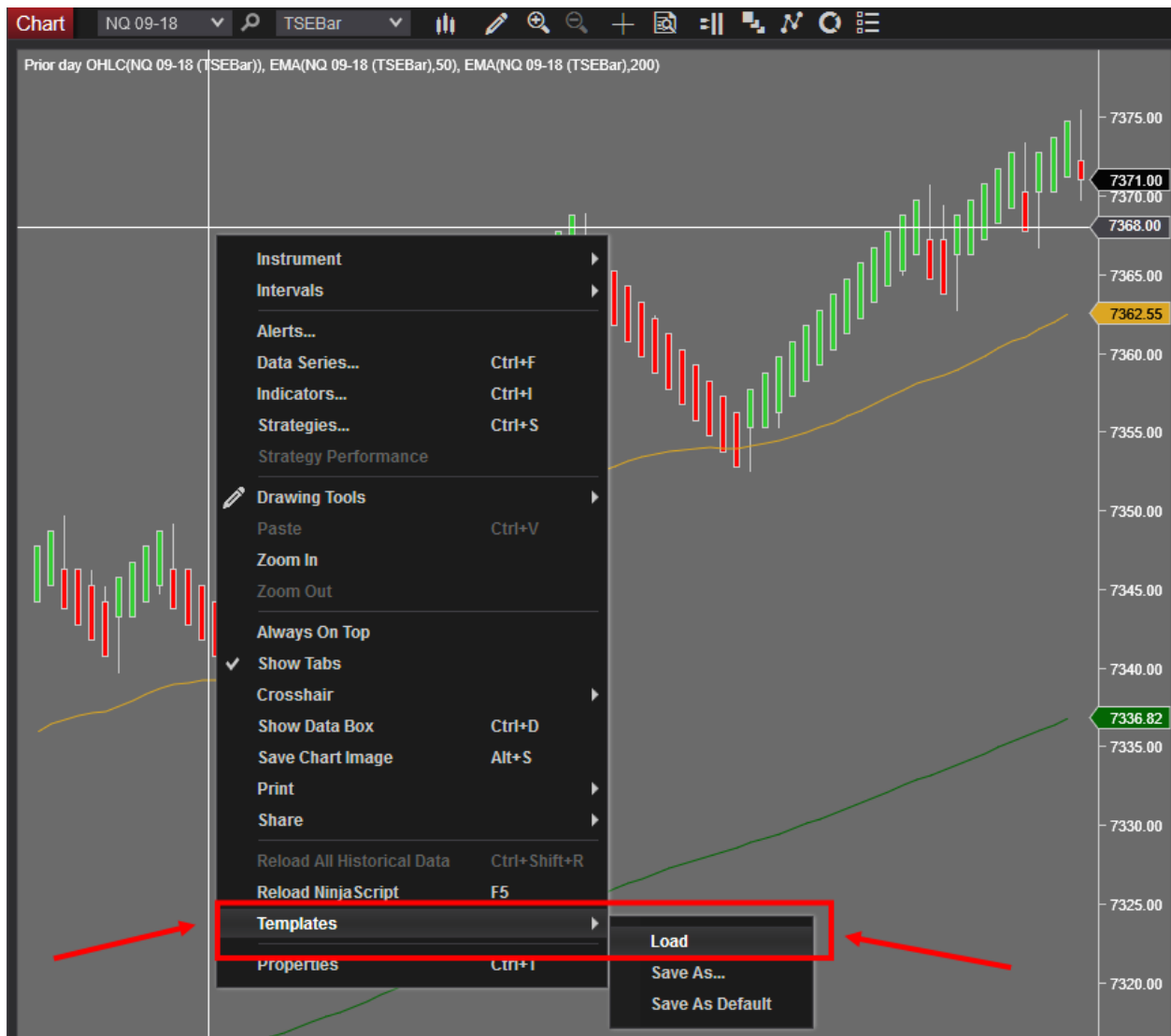
Tick Reversal = 10

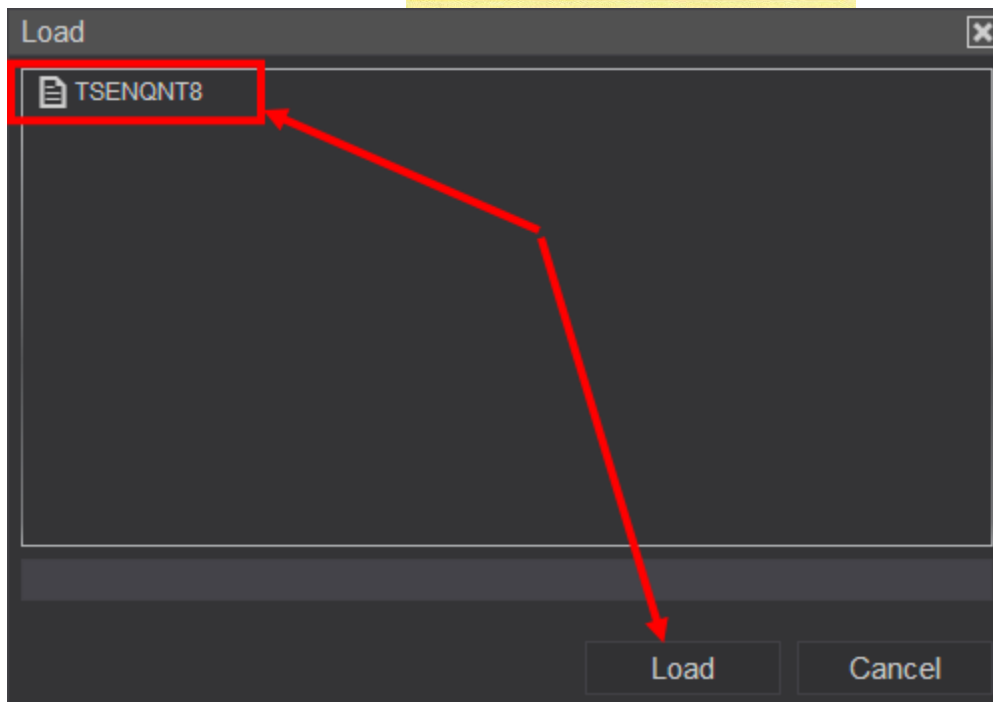
Once completed a new chart should appear with the TSEBar type and some data loaded. It should look something like this.





Once loaded right click on the chart and at the bottom of the dialog box you will see 'Templates'. Select Templates and then 'Load'. Another dialog box will open. In that you will see a list of chart templates. Select 'TSENQNT8'.





This will load the selected chart template for your use.

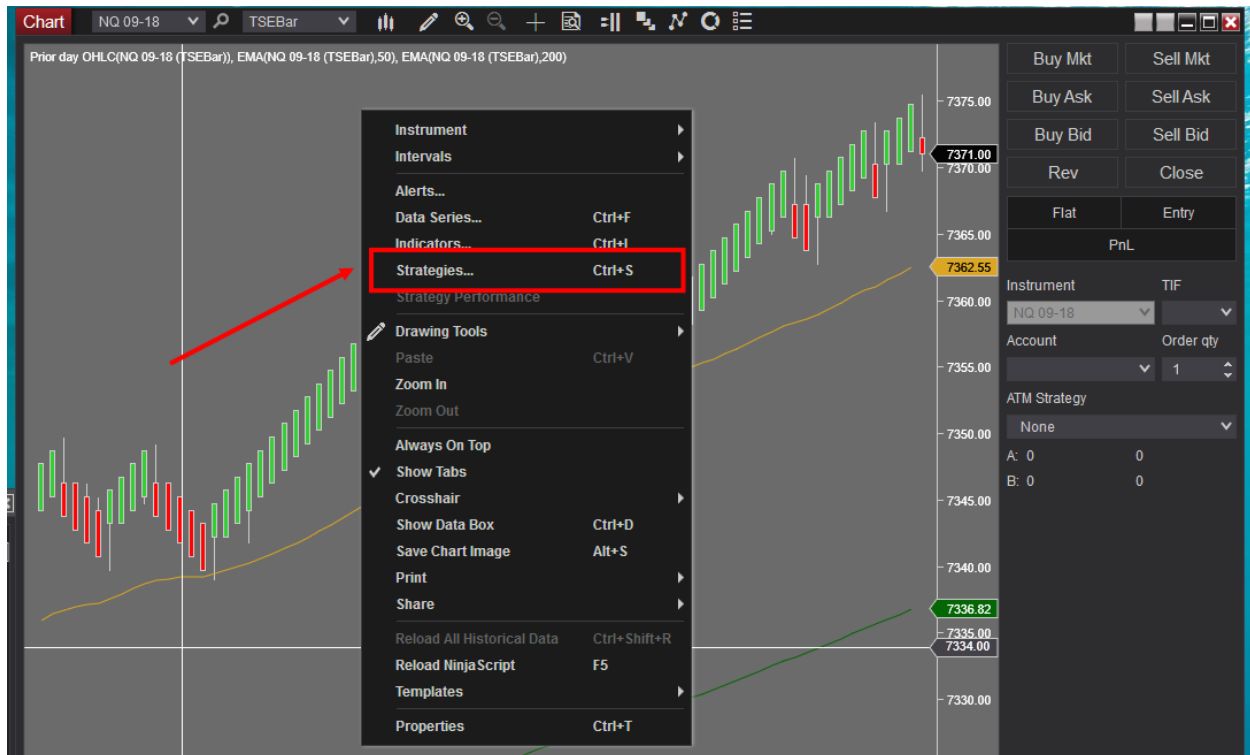




Enabling Your Strategy – From your Chart

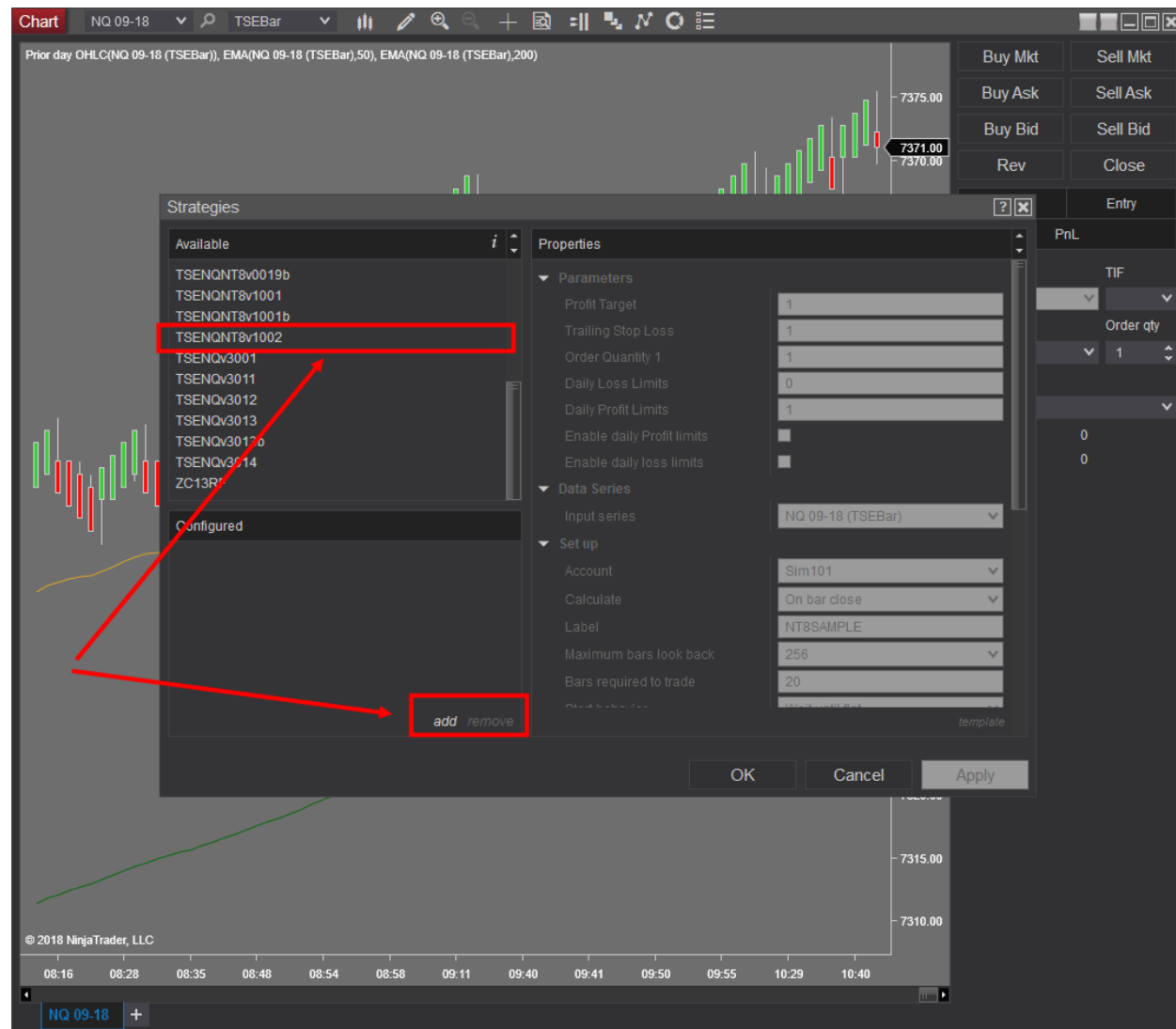
Now you can enable your TSENQNT8 strategy from this new chart.

- 1) Right click on the chart, a window opens with a series of options on it. About a 1/3 of the way down this list you see the word “Strategies”.





- 2) Select Strategies. In a few seconds, a new window opens. In the upper left-hand side of the window you will see a list of strategies that are on your computer. Scroll through the list of strategies and find “TSENQNT8v1xxx”. Highlight that selection.
- 3) Once highlighted click the “Add” button.





- 4) Once you click the new button your TSENQNT8 will now be in the lower left-hand box of this window.
- 5) Once TSENQNT8 is added to the lower left-hand box you can click the different configuration parameters for TSENQNT8 based on your preferences. These are the settings that you see to the right of the dialog box.

We will go through a basic set up so that you can see TSENQNT8 work with your chart. See dialog box on the next page for reference.

Parameters

Here you will be setting profit targets and trailing stop losses for a trade. You will be setting your quantities for one or split trades. You will also be setting the times of the day that you want TSENQNT8 to run. Daily Profit and Loss limits and if to enable them. In addition, you will be saving these settings for future use so that you do not have to reenter everything every time you want to use these settings. The sample that we are going to set up will run TSENQNT8 as follows.

- 2 contracts to be traded
- 1 contract will be taken off at a profit of 8 ticks
- Both contracts will have a trailing stop loss of -14 ticks
- The order will be split so that one contract can be taken off at profit and the other allowed to run.
- The market start time in this example will be at 9:30:00 EST
- The market stop time will be at 16:00:00 EST
- TSENQNT8 will start trading at 10:05:00 EST
- TSENQNT8 will stop trading at 12:43:00 EST
- The daily Loss limit will be set to -\$200
- The daily profit limit will be set to +\$220



Strategies

Available *i*

NT8SAMPLE
Sample ATM strategy
Sample MA crossover
Sample multi-instrument
Sample multi-timeframe
TSENQNT8v0010b
TSENQNT8v0016b
TSENQNT8v0017b
TSENQNT8v0018b
TSENQNT8v0018bc
TSENQNT8v0018d
TSENQNT8v0019b
TSENQNT8v1001
TSENQNT8v1001b
TSENQNT8v1002
TSENQv3001
TSENQv3011
TSENQv3012
TSENQv3013
TSENQv3013b
TSENQv3014
ZC13RF

Configured

TSENQNT8v1002(-200,True,True,220,8,1,1,93000,16...

add remove

Properties

Parameters

Profit Target 8
Trailing Stop Loss 14
Order Quantity 1
Order Quantity 2 1
Split your order? ☒
Market Start Time 93000
Market Stop Time 160000
Trading Start Time 100500
Trading Stop Time 144300
Daily Loss Limits -200
Daily Profit Limits 220
Enable daily loss limits ☒
Enable daily Profit limits ☒

Data Series

Input series NQ 09-18 (TSEBar)

Set up

Account Sim101
Calculate On bar close
Label TSENQNT8v1002
Maximum bars look back 256
Bars required to trade 20
Start behavior Wait until flat
Enabled ☐

Historical fill processing

Order fill resolution Standard (Fastest)
Fill limit orders on touch ☐
Slippage 0

Order handling

Entries per direction 2
Entry handling All entries
Exit on session close ☒
Exit on session close seconds 30
Stop & target submission Per entry execution

Order properties

Set order quantity Strategy
Time in force GTC

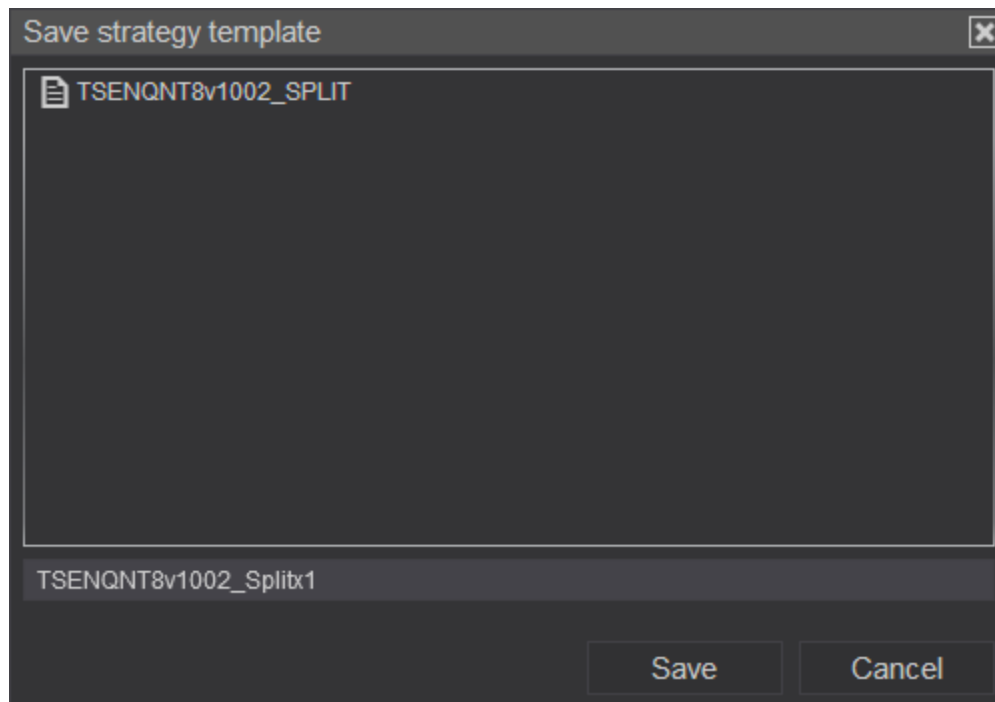
template

OK Cancel Apply



One other adjustment needs to be done under ORDER HANDLING you will need to set the 'Entries per direction' to two. This is because we have split our order in two. If we do not do this then only Order quantity 1 will be executed with a profit target of +8 and a trailing stop loss of -14.

You can at this point save this configuration as a templet for future use. This was you will not need to keep entering this information over and over. At the bottom right hand side just above the word APPLY you can see the word template in lower case. Click on the word, and you will have the option to Load or Save this configuration. Click Save, a new dialog box will open. Change the default name to something that makes sense to you and save it.





At this point your chart and strategy now will work together. This means that the strategies actions will now be visible on this chart. However, your strategy is still not enabled and you will now need to complete the following steps.

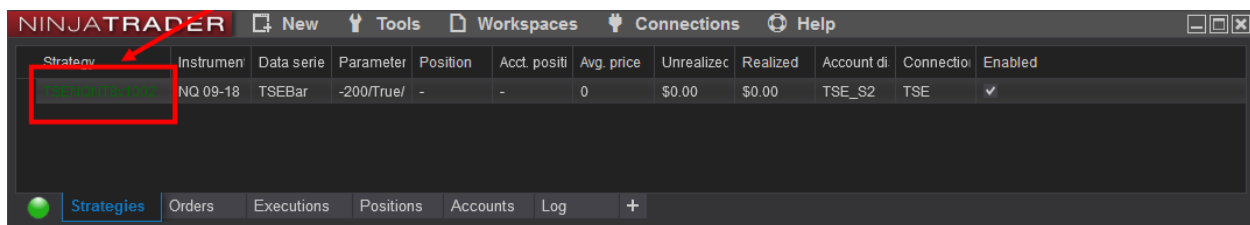




Go to the Control Center. From here select the “Strategies” tab.

- 1) Click on the Strategies tab.
- 2) The area below it will show all strategies that you have selected to run on your system. You should see the TSENQNT8v1.xxx” in this list, which we added from our chart (see Creating your Charts).
- 3) On the far-right hand side of this list is a check box labeled “Enable”. Check this box to enable your strategy.

Once enabled the strategy is live and running. The name of the strategy will turn green. This means its active and monitoring the markets.



We recommend that you enable Chart Trader so that you can see the trades and the associated stop and targets in real time or replay mode. To do this click on the Chart Trade icon along the top of your chart and select the following option ‘Chart Trader’.

See next page for details.



This will put the trade buttons on the chart for you in case you want to override TSENQNT8 for some reason. If you **CLOSE an active** TSENQNT8 trade you will be responsible for making sure that the trade is closed. In addition, TSENQNT8 will automatically disable itself. If you intend to keep using the program for the rest of the day you will have to re-enable it as described in this document.

That completes your basic set up of your working environment. Any questions – please drop us an email at rhinosoftwareinc@gmail.com and we will address them as quickly as possible.