



Green Leaf Lab

12025 NE Marx St. Portland, OR 97220
503-253-3511 / www.greenleaflabs.com
License#: 10029074C70

Quality Control Testing Official Report

D8 Lemon Octane

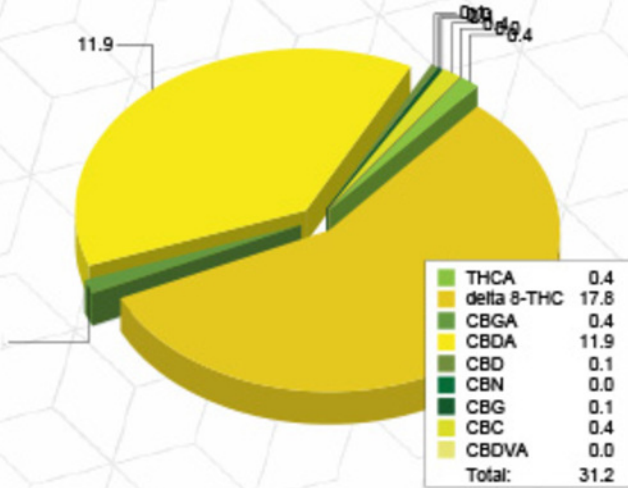
Sample ID: G1L0076-05 Matrix: Industrial Hemp
Test ID: 5021942
Source ID:
Date Sampled: 12/02/21 Date Accepted: 12/02/21

Fern Valley Farms
Fernvalleycbd@gmail.com

Potency Analysis

Date/Time Extracted: 12/06/21 10:00 Analysis Method/SOP: 215 Batch Identification: 2150004

Cannabinoids	LOQ (%)	% by Wt.	mg/g	Cannabinoids Profile
Total THC	0.009080	0.3873	3.873	
Total CBD	0.01660	10.58	105.8	
Total CBG	7.900E-4	0.4200	4.2	
THCA	5.000E-4	0.4416	4.416	
delta 9-THC	5.000E-4	< LOQ	< LOQ	
delta 8-THC	0.03582	17.75	177.5	
THCV	0.005055	< LOQ	< LOQ	
THCVA	0.001885	< LOQ	< LOQ	
CBD	0.004000	0.1438	1.438	
CBDA	0.004000	11.90	119	
CBDV	0.005000	< LOQ	< LOQ	
CBDVA	0.001640	0.007714	0.07714	
CBN	0.002990	0.04867	0.4867	
CBG	7.900E-4	0.06758	0.6758	
CBGA	7.900E-4	0.4014	4.014	
CBC	0.008965	0.4178	4.178	



Total THC = delta 9-THC + (THCA * 0.877)

Total CBD = CBD + (CBDA * 0.877)

Total CBG = CBG + (CBGA * 0.878)

LOQ=Limit of Quantification, the lowest measurable concentration of an analyte.



ISO 17025
ACCREDITED
LABORATORY

Eric Wendt
Chief Science Officer - 12/7/2021

These results relate only to the sample included on this report. The report may not be reproduced except in full, without the written permission of Green Leaf Lab.

This is for informational testing and is not compliance testing. Lab results apply to the sample as received.



Green Leaf Lab

12025 NE Marx St. Portland, OR 97220
503-253-3511 / www.greenleaflabs.com
License#: 10029074C70

Quality Control Testing Official Report

Lemon Octane

Sample ID: G1J0397-01

Matrix: Industrial Hemp

Test ID: 5014355

Source ID:

Date Sampled: 10/21/21

Date Accepted: 10/21/21

Fern Valley Farms

Terpene Analysis

Date/Time Extracted: 10/25/21 11:44

Analysis Method/SOP: 204

Monoterpenes	%	mg/g	Monoterpenes	%	mg/g
Camphene	< LOQ	< LOQ	Camphor	< LOQ	< LOQ
3-Carene	< LOQ	< LOQ	alpha-Cedrene	< LOQ	< LOQ
Cedrol	< LOQ	< LOQ	Endo-fenchyl alcohol	0.01635	0.1635
Eucalyptol	< LOQ	< LOQ	Fenchone	< LOQ	< LOQ
Geraniol	< LOQ	< LOQ	Geranyl acetate	< LOQ	< LOQ
Hexahydrothymol	< LOQ	< LOQ	Isoborneol	< LOQ	< LOQ
Isopulegol	< LOQ	< LOQ	Limonene	0.2500	2.5
Linalool	0.1196	1.196	p-Mentha-1,5-diene	< LOQ	< LOQ
beta-Myrcene	0.2457	2.457	alpha-Pinene	< LOQ	< LOQ
beta-Pinene	0.005417	0.05417	Pulegone	< LOQ	< LOQ
Sabinene	< LOQ	< LOQ	Sabinene hydrate	< LOQ	< LOQ
gamma-Terpinene	< LOQ	< LOQ	alpha-Terpinene	< LOQ	< LOQ
Terpineol	0.02282	0.2282	Terpinolene	< LOQ	< LOQ
B Y-Terpineol	< LOQ	< LOQ	Nerol	< LOQ	< LOQ
A-Terpineol	0.03623	0.3623	Borneol	< LOQ	< LOQ
Ocimene isomer II	< LOQ	< LOQ	Ocimene isomer I	< LOQ	< LOQ
Sesquiterpenes	%	mg/g	Sesquiterpenes	%	mg/g
alpha-Bisabolol	0.06530	0.653	beta-Caryophyllene	0.5031	5.031
Caryophyllene Oxide	< LOQ	< LOQ	Guaiol	0.09791	0.9791
alpha-Humulene	0.1269	1.269	trans-Nerolidol	< LOQ	< LOQ
Valencene	0.06320	0.632	cis-Nerolidol	< LOQ	< LOQ
Total Terpenes	1.530	15.3			

<LOQ - Results below the Limit of Quantitation - Terpenes profile/analysis are not accredited to ORELAP TNI 2009 Quality Standards.

TERPENE REPORT PRIOR TO DELTA 8 TREATMENT



Eric Wendt
Chief Science Officer - 10/26/2021

These results relate only to the sample included on this report. The report may not be reproduced except in full, without the written permission of Green Leaf Lab.

This is for informational testing and is not compliance testing. Lab results apply to the sample as received.