

ESSENTIAL SERIES By Atlantic
ESSSF44831 - 1 Bdrm/1 Bath
14' x 52' (56') Inc. 6' Porch & 4' Stretch

HOME INTO FEATHER NEST COMMUNITY

Standard Features:

Drywall Throughout
Open Floor Plan
18 CU Ft. Refrigerator
9 Lite Rear Door
Large Closet

Low E Vinyl Windows
Washer Dryer Area
4 Light Front Door
Range Hood with Light
Vented Shelf in Closet

OPTIONS ADDED:

Electric Furnace & Range
200 AMP Electric Service
R22 Floor Insulation
Vinyl Flooring Throughout
LED Light IPO Switched Recept. L/R & BDRM
Water Shutoffs Throughout
Cabinet Over Refrigerator

Dishwasher
7/16 OSB All Walls
R30 Roof Insulation
Extra LED Can Lights - 2
Coat Caddy with Overhead
Exterior Faucet
60" Shower with Door

Home Stretched From 48' to 52'

HUD Code Installation Requirements:

Pier Footers
Anchors/Tie-Downs

Vapor Barrier

Items Needed To Be Completed for Occupancy:

Code Compliant Steps - 2 Sets
Utility Connection - Water, Sewer & Electric
Vinyl Skirting

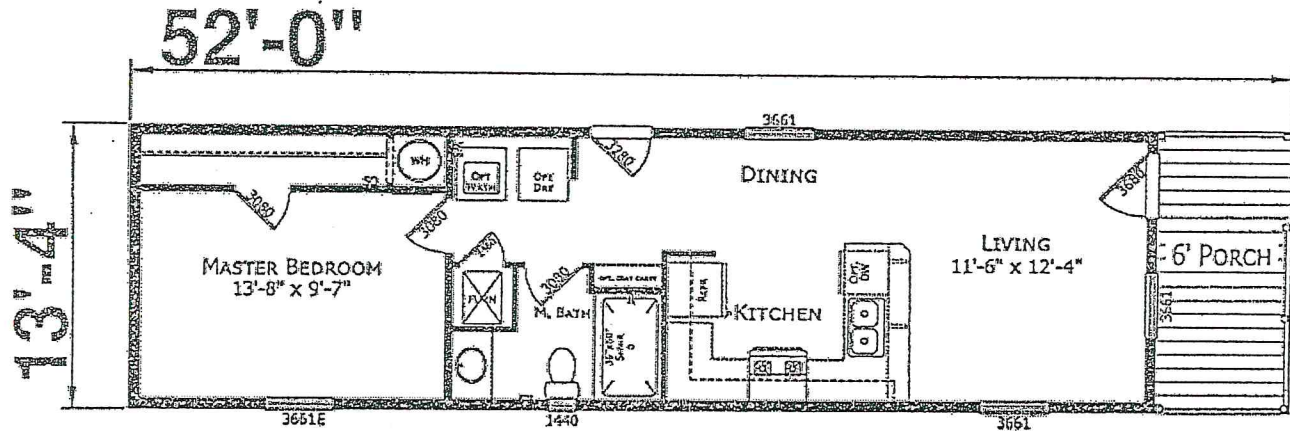
PRICE OF HOME INTO FEATHER NEST COMMUNITY
\$69,000

10/8/2024

ESSENTIALS ESSF44831

by

ATLANTIC HOMES



1 BDRM/1 BATH
14' x 52' (56') 693 SQ. FT.

BROUGHT TO YOU BY

ATLANTIC HOMES

AND

BOB FEATHER HOMES

(814) 467-5612

"BUILDING DREAMS SINCE 1957"